



CURRENT STATUS OF CONFIRMED CASES



102



ACT	NSW	NT	QLD	SA	TAS	VIC	WA
0	40	0	11	5	1	29	16



2,744

ACT	NSW	NT	QLD	SA	TAS	VIC	WA
87	1,263	16	297	234	37	517	293

72,550,848

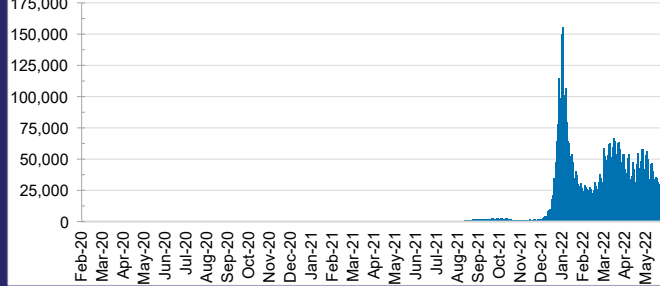


**TOTAL TESTS
REPORTED**

ACT	NSW	NT	QLD
1,143,297	32,169,296	792,729	7,676,745

SA	TAS	VIC	WA
4,956,480	688,157	21,174,054	3,950,090

DAILY NUMBER OF REPORTED CASES

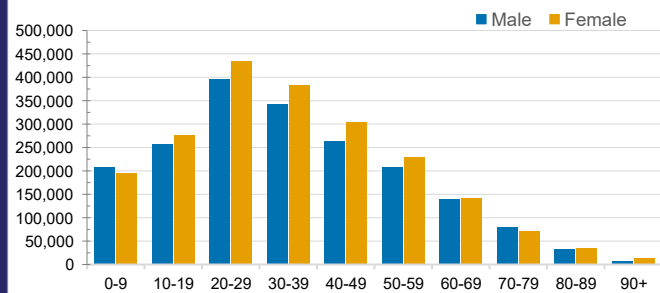


CASES IN AGED CARE SERVICES

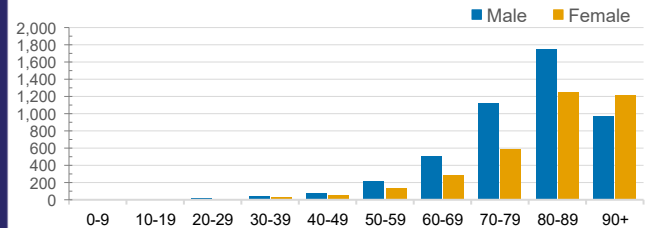
Confirmed Cases	Australia	ACT	NSW	NT	QLD	SA	TAS	VIC	WA
Residential Care Recipients	51021 (2660)	631 (33)	17458 (865)	107 (6)	7827 (328)	4135 (209)	1144 (22)	15691 (1060)	4028 (137)
In Home Care Recipients	41,004	745	14,791	167	7,418	3,978	615	8,814	4,476

Cases in care recipients (deaths)

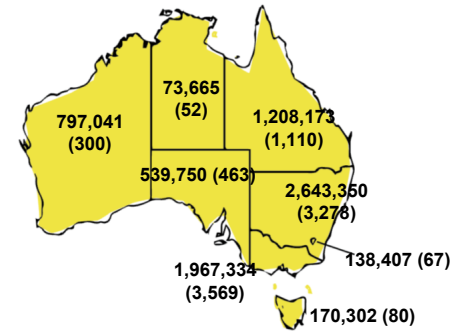
CASES BY AGE GROUP AND SEX



DEATHS BY AGE GROUP AND SEX

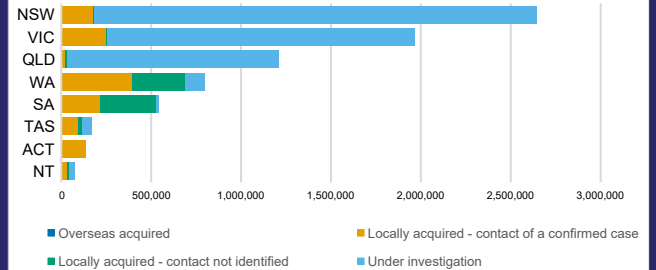


CASES (DEATHS) BY STATE AND TERRITORIES



CASES BY SOURCE OF INFECTION

Australia (% of all confirmed cases)



PUBLIC HEALTH RESPONSE MEASURE

Proportion of total cases under investigation

