



CURRENT STATUS OF CONFIRMED CASES



87



ACT	NSW	NT	QLD	SA	TAS	VIC	WA
1	34	0	3	10	1	29	9



2,723

ACT	NSW	NT	QLD	SA	TAS	VIC	WA
81	1,254	20	305	232	42	514	275

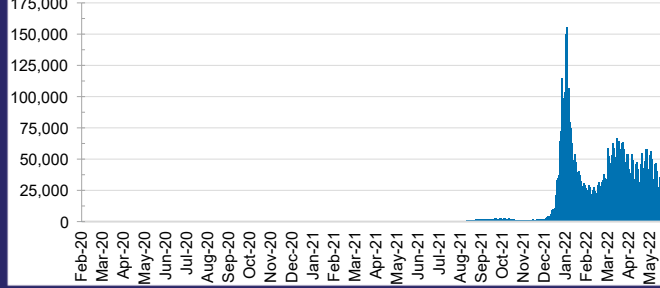
72,163,238



ACT	NSW	NT	QLD
1,132,366	32,020,949	789,352	7,634,766

SA	TAS	VIC	WA
4,912,657	682,743	21,094,316	3,896,089

DAILY NUMBER OF REPORTED CASES

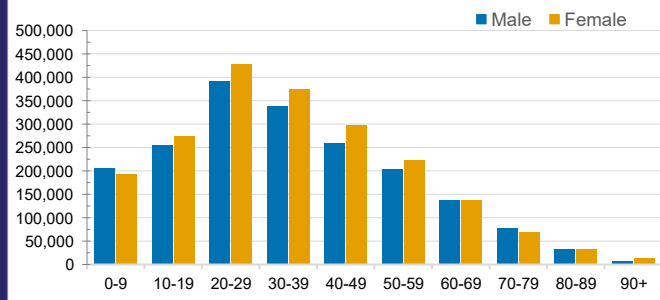


CASES IN AGED CARE SERVICES

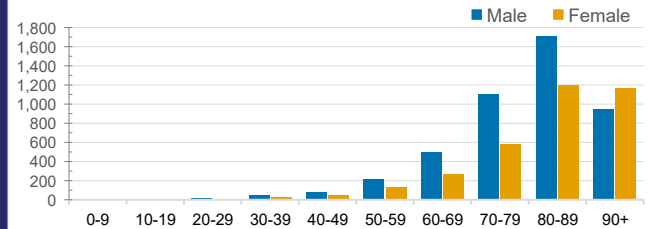
Confirmed Cases	Australia	ACT	NSW	NT	QLD	SA	TAS	VIC	WA
Residential Care Recipients	48674 (2560)	562 (30)	16779 (833)	116 (6)	7640 (320)	4017 (205)	1055 (22)	14893 (1037)	3612 (107)
In Home Care Recipients	40,004	711	14,516	168	7,347	3,945	595	8,482	4,240

Cases in care recipients (deaths)

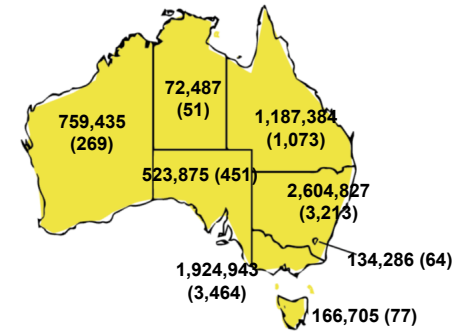
CASES BY AGE GROUP AND SEX



DEATHS BY AGE GROUP AND SEX

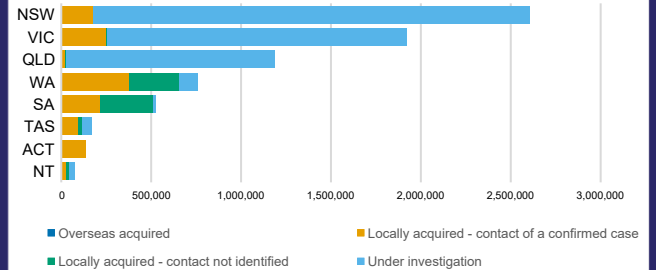


CASES (DEATHS) BY STATE AND TERRITORIES



CASES BY SOURCE OF INFECTION

Australia (% of all confirmed cases)



PUBLIC HEALTH RESPONSE MEASURE

Proportion of total cases under investigation

