



CURRENT STATUS OF CONFIRMED CASES



108



ACT	NSW	NT	QLD	SA	TAS	VIC	WA
1	40	4	11	8	5	25	14

3,224



ACT	NSW	NT	QLD	SA	TAS	VIC	WA
11	1,526	20	597	235	38	463	229
6							

73,898,594

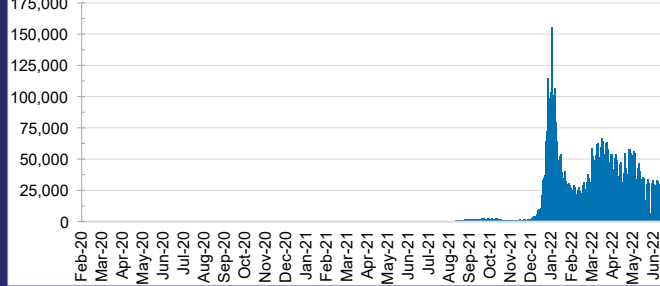


**TOTAL TESTS
REPORTED**

ACT	NSW	NT	QLD
1,183,396	32,705,035	802,822	7,891,893

SA	TAS	VIC	WA
5,096,367	706,975	21,410,821	4,101,285

DAILY NUMBER OF REPORTED CASES

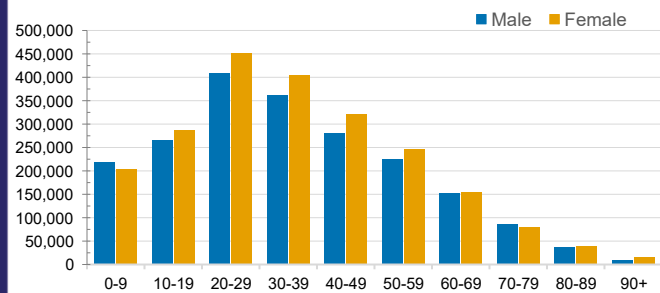


CASES IN AGED CARE SERVICES

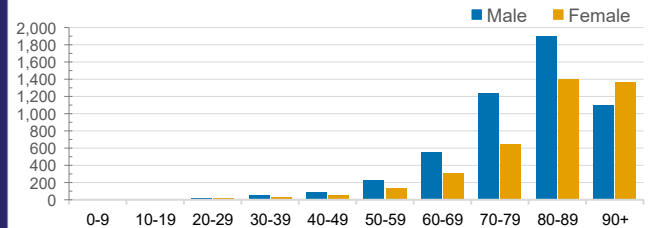
Confirmed Cases	Australia	ACT	NSW	NT	QLD	SA	TAS	VIC	WA
Residential Care Recipients	58298 (2854)	746 (37)	19821 (947)	108 (6)	9380 (357)	4629 (226)	1308 (22)	17557 (1093)	4749 (166)
In Home Care Recipients	44,593	809	15,757	173	8,409	4,217	715	9,574	4,939

Cases in care recipients (deaths)

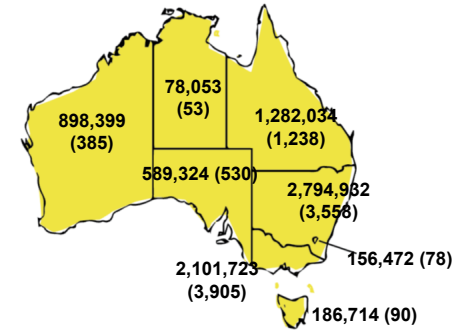
CASES BY AGE GROUP AND SEX



DEATHS BY AGE GROUP AND SEX

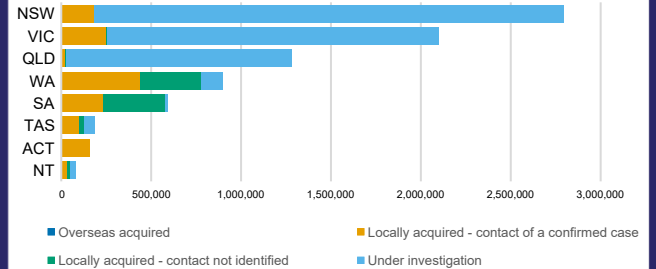


CASES (DEATHS) BY STATE AND TERRITORIES



CASES BY SOURCE OF INFECTION

Australia (% of all confirmed cases)



PUBLIC HEALTH RESPONSE MEASURE

Proportion of total cases under investigation

