



CURRENT STATUS OF CONFIRMED CASES



122



ACT	NSW	NT	QLD	SA	TAS	VIC	WA
0	49	1	14	8	4	35	11

3,276



ACT	NSW	NT	QLD	SA	TAS	VIC	WA
12	1,540	17	593	246	45	468	246
1							

73,813,981

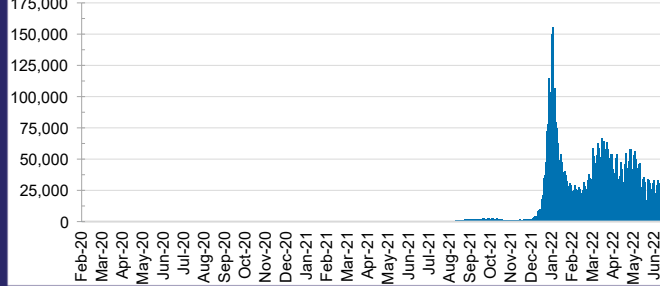


**TOTAL TESTS
REPORTED**

ACT	NSW	NT	QLD
1,180,576	32,669,977	802,370	7,883,118

SA	TAS	VIC	WA
5,087,488	705,607	21,391,725	4,093,120

DAILY NUMBER OF REPORTED CASES

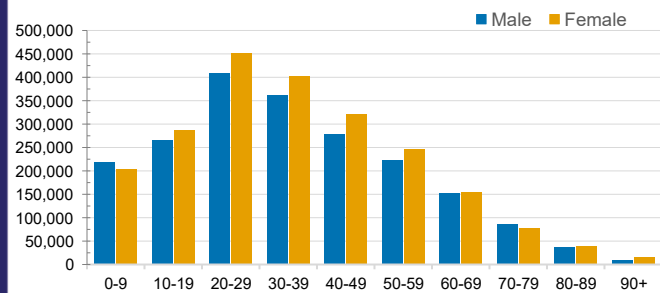


CASES IN AGED CARE SERVICES

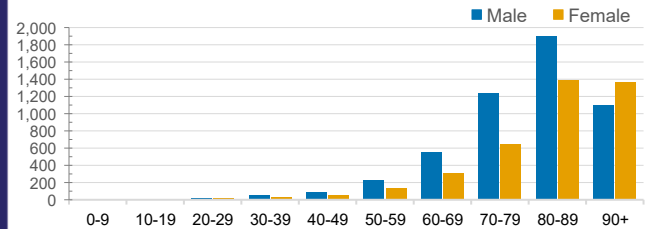
Confirmed Cases	Australia	ACT	NSW	NT	QLD	SA	TAS	VIC	WA
Residential Care Recipients	57759 (2844)	738 (37)	19650 (944)	108 (6)	9219 (353)	4579 (226)	1294 (22)	17451 (1090)	4720 (166)
In Home Care Recipients	44,334	808	15,662	173	8,294	4,194	710	9,539	4,954

Cases in care recipients (deaths)

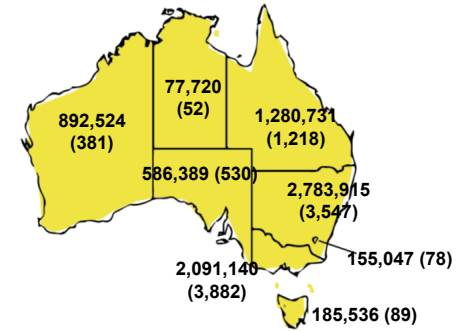
CASES BY AGE GROUP AND SEX



DEATHS BY AGE GROUP AND SEX

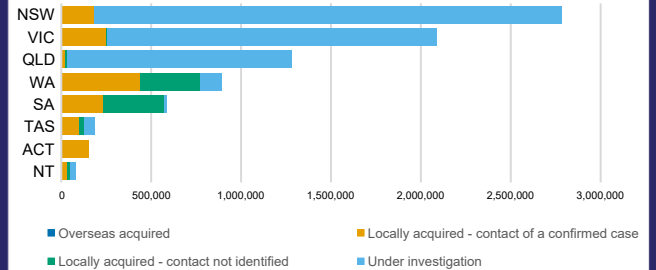


CASES (DEATHS) BY STATE AND TERRITORIES



CASES BY SOURCE OF INFECTION

Australia (% of all confirmed cases)



PUBLIC HEALTH RESPONSE MEASURE

Proportion of total cases under investigation

