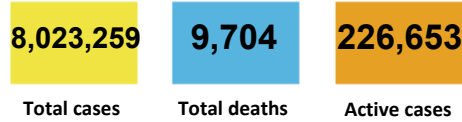




CURRENT STATUS OF CONFIRMED CASES



111



ACT	NSW	NT	QLD	SA	TAS	VIC	WA
1	55	1	8	9	3	26	8



3,133

ACT	NSW	NT	QLD	SA	TAS	VIC	WA
11	1,507	17	542	210	45	459	234
9							

73,756,481

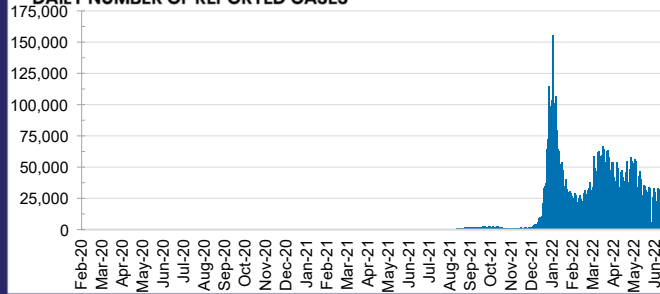


**TOTAL TESTS
REPORTED**

ACT	NSW	NT	QLD
1,178,160	32,649,129	801,967	7,874,737

SA	TAS	VIC	WA
5,081,095	704,364	21,382,804	4,084,225

DAILY NUMBER OF REPORTED CASES

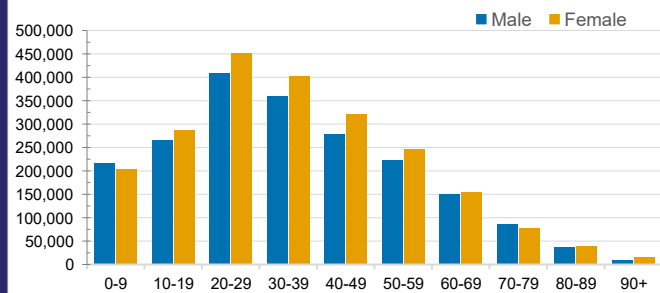


CASES IN AGED CARE SERVICES

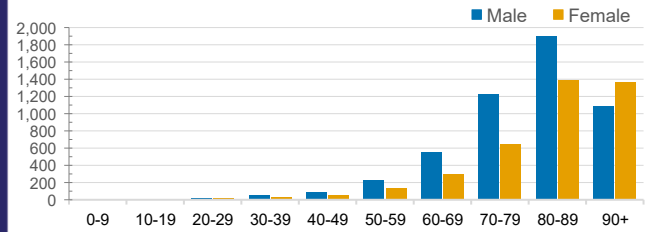
Confirmed Cases	Australia	ACT	NSW	NT	QLD	SA	TAS	VIC	WA
Residential Care Recipients	56990 (2837)	703 (37)	19413 (942)	108 (6)	9012 (350)	4543 (225)	1283 (22)	17246 (1090)	4682 (165)
In Home Care Recipients	43,999	800	15,570	171	8,196	4,180	705	9,452	4,925

Cases in care recipients (deaths)

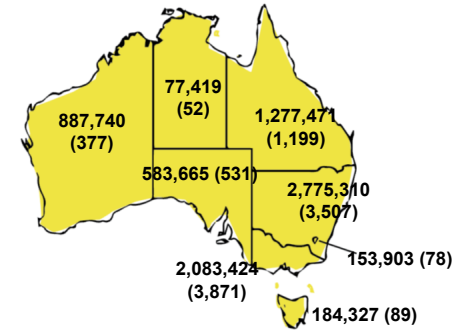
CASES BY AGE GROUP AND SEX



DEATHS BY AGE GROUP AND SEX

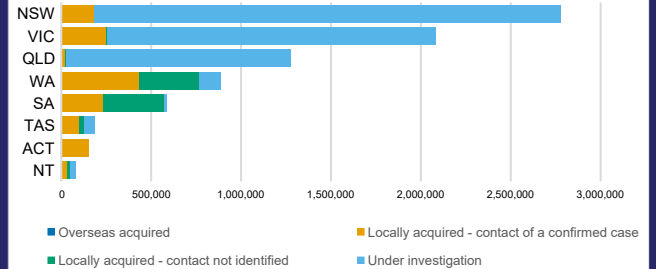


CASES (DEATHS) BY STATE AND TERRITORIES



CASES BY SOURCE OF INFECTION

Australia (% of all confirmed cases)



PUBLIC HEALTH RESPONSE MEASURE

Proportion of total cases under investigation

