



**CURRENT STATUS OF CONFIRMED CASES**



**110**



ACT	NSW	NT	QLD	SA	TAS	VIC	WA
1	54	0	7	10	3	27	8

**2,967**



ACT	NSW	NT	QLD	SA	TAS	VIC	WA
99	1,435	13	522	200	47	412	239

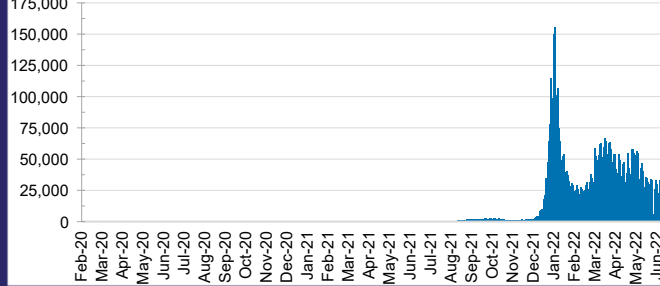
**73,510,142**



ACT	NSW	NT	QLD
1,172,694	32,573,269	800,881	7,778,264

SA	TAS	VIC	WA
5,062,259	701,908	21,352,862	4,068,005

**DAILY NUMBER OF REPORTED CASES**

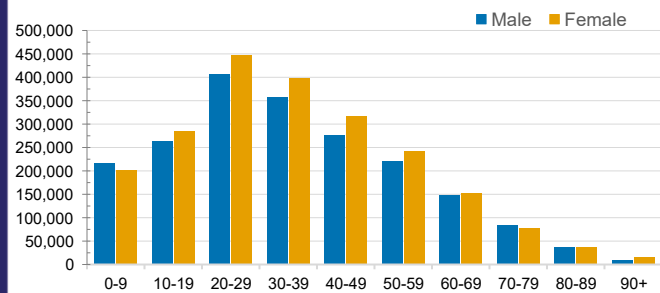


**CASES IN AGED CARE SERVICES**

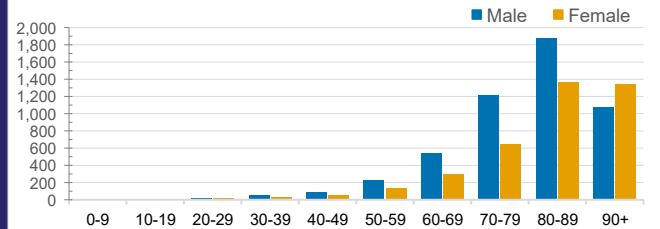
Confirmed Cases	Australia	ACT	NSW	NT	QLD	SA	TAS	VIC	WA
Residential Care Recipients	56527 (2823)	702 (37)	19271 (936)	108 (6)	8918 (349)	4499 (219)	1271 (22)	17093 (1089)	4665 (165)
In Home Care Recipients	43,783	799	15,552	171	8,116	4,157	702	9,388	4,898

Cases in care recipients (deaths)

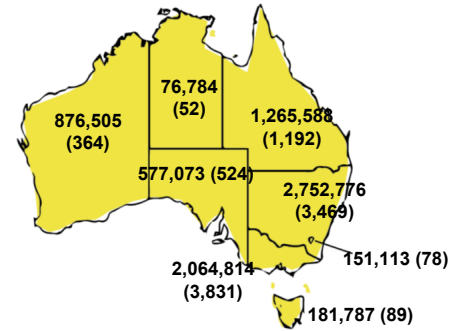
**CASES BY AGE GROUP AND SEX**



**DEATHS BY AGE GROUP AND SEX**

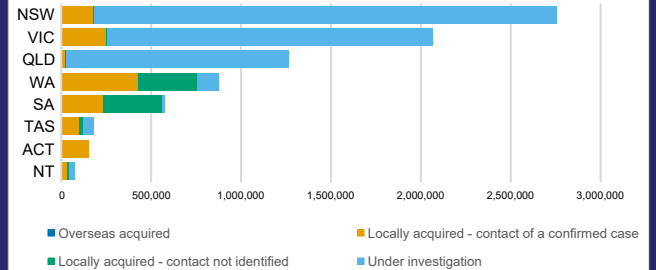


**CASES (DEATHS) BY STATE AND TERRITORIES**



**CASES BY SOURCE OF INFECTION**

Australia (% of all confirmed cases)



**PUBLIC HEALTH RESPONSE MEASURE**

Proportion of total cases under investigation

