



CURRENT STATUS OF CONFIRMED CASES



108



ACT	NSW	NT	QLD	SA	TAS	VIC	WA
1	53	1	6	10	2	23	12

3,043



ACT	NSW	NT	QLD	SA	TAS	VIC	WA
88	1,500	14	512	212	46	411	260

73,438,580

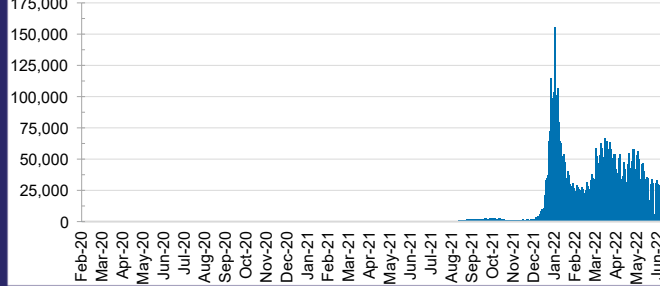


**TOTAL TESTS
REPORTED**

ACT	NSW	NT	QLD
1,170,420	32,541,349	800,333	7,769,963

SA	TAS	VIC	WA
5,055,049	700,789	21,340,107	4,060,570

DAILY NUMBER OF REPORTED CASES

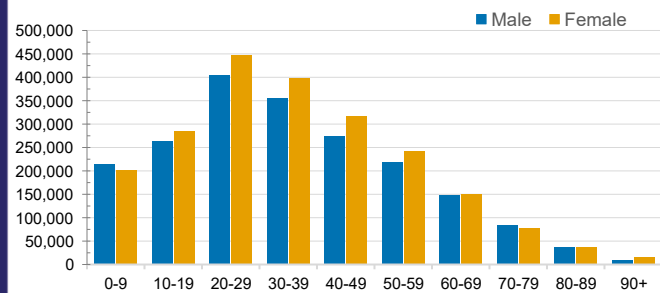


CASES IN AGED CARE SERVICES

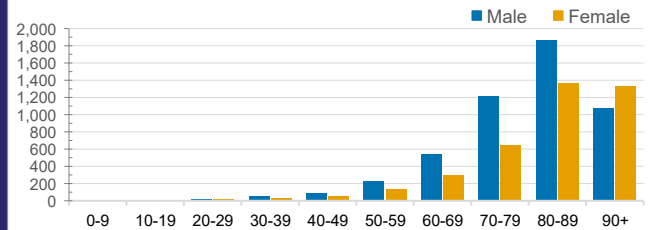
Confirmed Cases	Australia	ACT	NSW	NT	QLD	SA	TAS	VIC	WA
Residential Care Recipients	56117 (2807)	684 (36)	19125 (931)	108 (6)	8798 (347)	4468 (219)	1247 (22)	17048 (1084)	4639 (162)
In Home Care Recipients	43,594	789	15,492	171	8,040	4,145	698	9,365	4,894

Cases in care recipients (deaths)

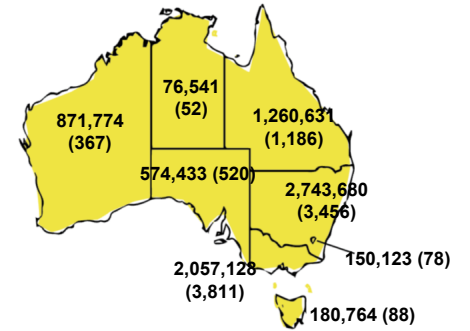
CASES BY AGE GROUP AND SEX



DEATHS BY AGE GROUP AND SEX

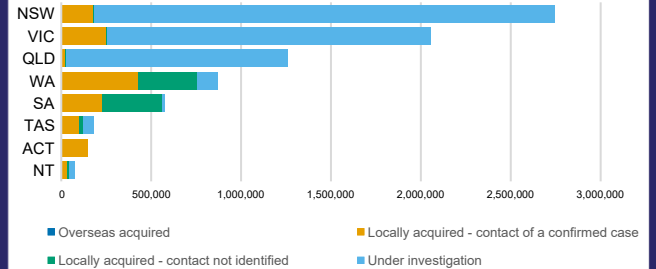


CASES (DEATHS) BY STATE AND TERRITORIES



CASES BY SOURCE OF INFECTION

Australia (% of all confirmed cases)



PUBLIC HEALTH RESPONSE MEASURE

Proportion of total cases under investigation

