



CURRENT STATUS OF CONFIRMED CASES



105



ACT	NSW	NT	QLD	SA	TAS	VIC	WA
1	57	0	7	9	2	21	8



3,055

ACT	NSW	NT	QLD	SA	TAS	VIC	WA
87	1,499	17	491	230	38	434	259

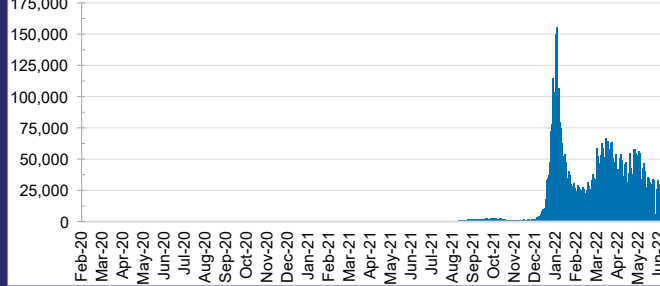
73,287,896



ACT	NSW	NT	QLD
1,165,311	32,474,872	799,336	7,754,374

SA	TAS	VIC	WA
5,038,113	698,483	21,313,062	4,044,345

DAILY NUMBER OF REPORTED CASES

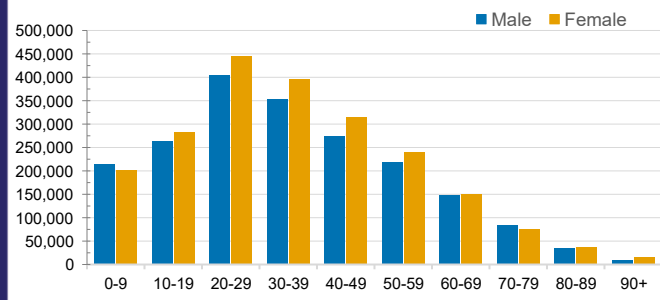


CASES IN AGED CARE SERVICES

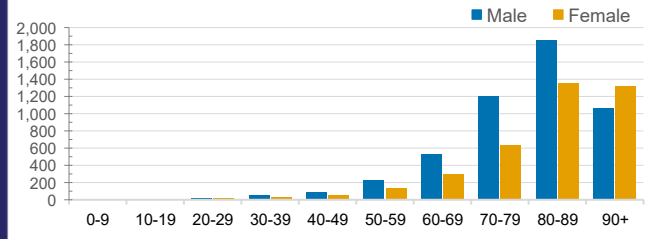
Confirmed Cases	Australia	ACT	NSW	NT	QLD	SA	TAS	VIC	WA
Residential Care Recipients	55097 (2794)	676 (34)	18806 (920)	108 (6)	8591 (344)	4380 (222)	1217 (22)	16817 (1085)	4502 (161)
In Home Care Recipients	42,988	798	15,368	176	7,784	4,093	675	9,300	4,794

Cases in care recipients (deaths)

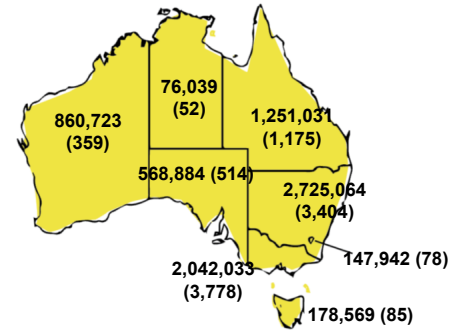
CASES BY AGE GROUP AND SEX



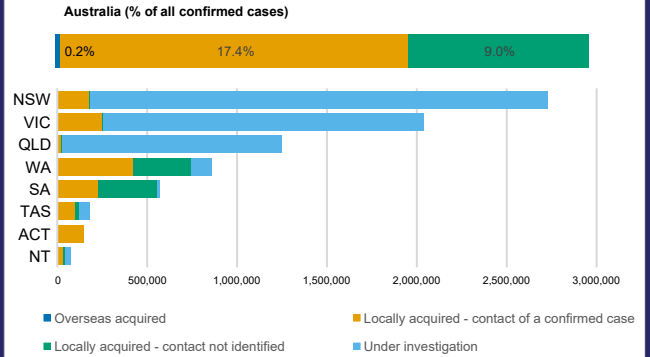
DEATHS BY AGE GROUP AND SEX



CASES (DEATHS) BY STATE AND TERRITORIES



CASES BY SOURCE OF INFECTION



PUBLIC HEALTH RESPONSE MEASURE

