



CURRENT STATUS OF CONFIRMED CASES



113



ACT	NSW	NT	QLD	SA	TAS	VIC	WA
2	58	0	7	11	2	21	12



3,006

ACT	NSW	NT	QLD	SA	TAS	VIC	WA
89	1,470	11	480	237	33	418	268

73,231,296

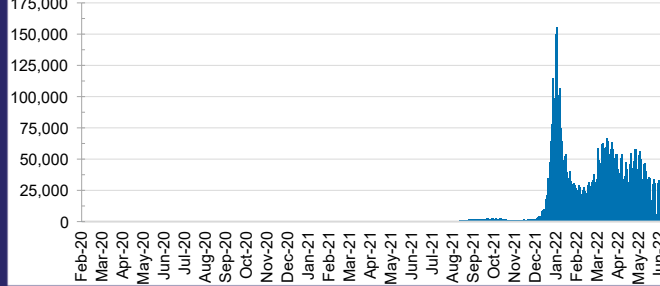


**TOTAL TESTS
REPORTED**

ACT	NSW	NT	QLD
1,162,516	32,453,447	798,683	7,749,709

SA	TAS	VIC	WA
5,030,898	697,526	21,303,209	4,035,308

DAILY NUMBER OF REPORTED CASES

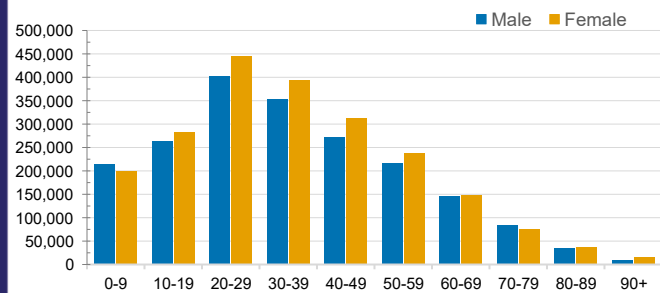


CASES IN AGED CARE SERVICES

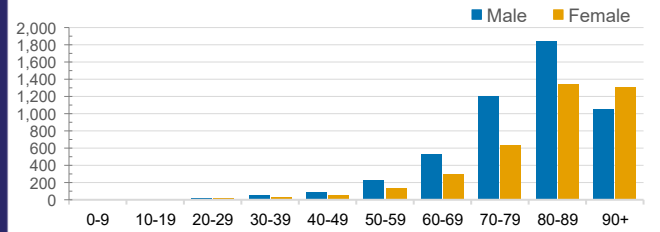
Confirmed Cases	Australia	ACT	NSW	NT	QLD	SA	TAS	VIC	WA
Residential Care Recipients	54512 (2771)	674 (34)	18672 (903)	108 (6)	8415 (343)	4319 (220)	1210 (23)	16631 (1082)	4483 (160)
In Home Care Recipients	42,686	790	15,298	176	7,659	4,054	670	9,242	4,797

Cases in care recipients (deaths)

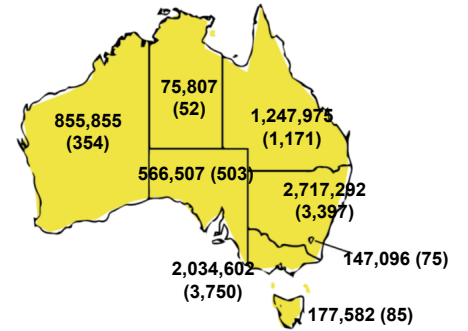
CASES BY AGE GROUP AND SEX



DEATHS BY AGE GROUP AND SEX

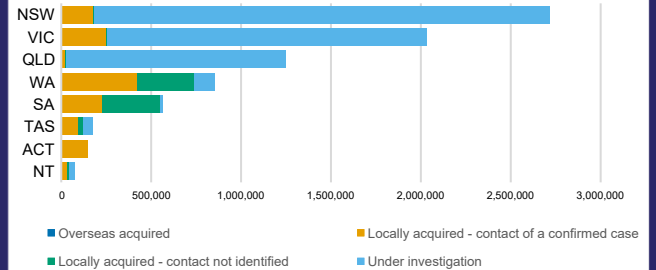


CASES (DEATHS) BY STATE AND TERRITORIES



CASES BY SOURCE OF INFECTION

Australia (% of all confirmed cases)



PUBLIC HEALTH RESPONSE MEASURE

Proportion of total cases under investigation

