



CURRENT STATUS OF CONFIRMED CASES



85



ACT	NSW	NT	QLD	SA	TAS	VIC	WA
4	30	0	7	9	1	28	6



ACT	NSW	NT	QLD	SA	TAS	VIC	WA
82	1,066	13	316	241	42	525	285

72,085,039

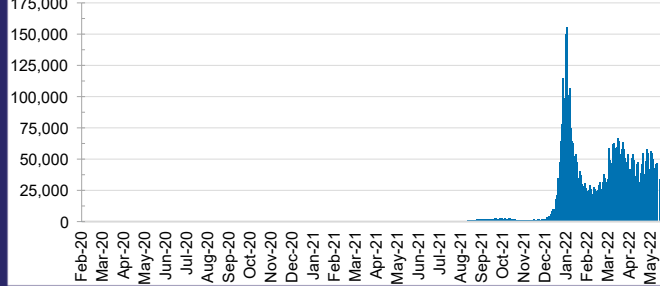


TOTAL TESTS REPORTED

ACT	NSW	NT	QLD
1,131,275	31,989,335	788,623	7,626,551

SA	TAS	VIC	WA
4,904,025	681,199	21,078,605	3,885,426

DAILY NUMBER OF REPORTED CASES

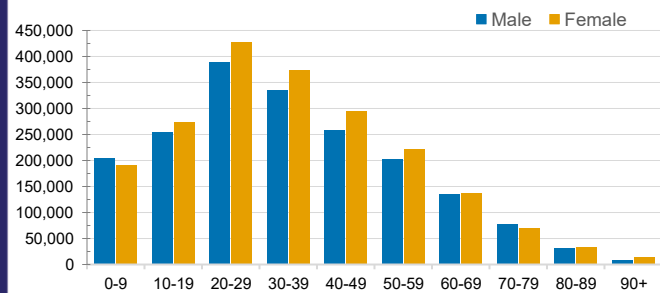


CASES IN AGED CARE SERVICES

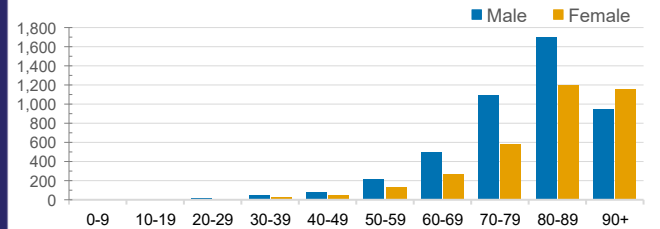
Confirmed Cases	Australia	ACT	NSW	NT	QLD	SA	TAS	VIC	WA
Residential Care Recipients	48241 (2558)	555 (30)	16681 (830)	116 (6)	7605 (320)	3984 (207)	1052 (24)	14770 (1036)	3478 (105)
In Home Care Recipients	39,761	714	14,474	168	7,304	3,929	596	8,425	4,151

Cases in care recipients (deaths)

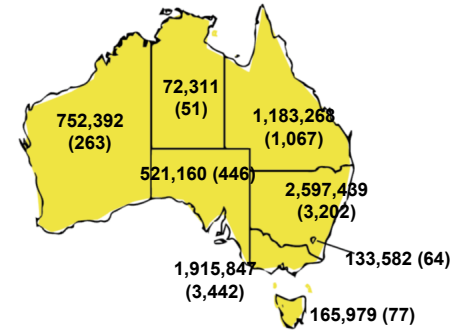
CASES BY AGE GROUP AND SEX



DEATHS BY AGE GROUP AND SEX

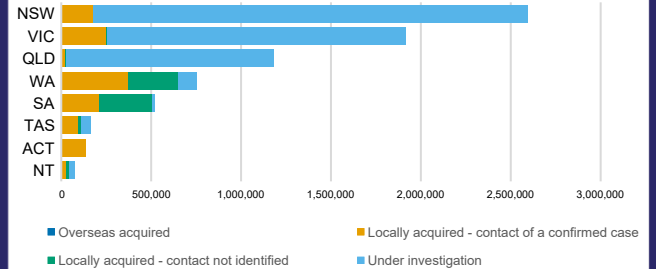


CASES (DEATHS) BY STATE AND TERRITORIES



CASES BY SOURCE OF INFECTION

Australia (% of all confirmed cases)



PUBLIC HEALTH RESPONSE MEASURE

Proportion of total cases under investigation

