



CURRENT STATUS OF CONFIRMED CASES



93



ACT	NSW	NT	QLD	SA	TAS	VIC	WA
2	42	1	7	5	1	24	11



2,817

ACT	NSW	NT	QLD	SA	TAS	VIC	WA
87	1,372	18	402	210	30	438	260

73,061,559

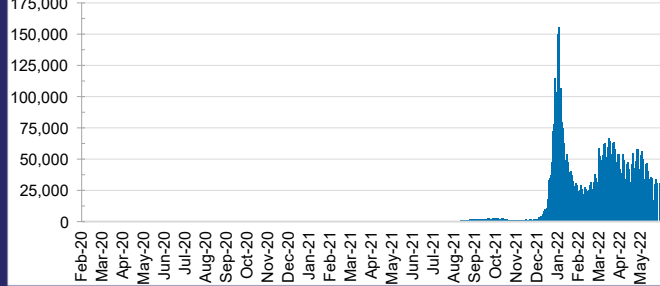


**TOTAL TESTS
REPORTED**

ACT	NSW	NT	QLD
1,157,877	32,375,307	797,353	7,730,629

SA	TAS	VIC	WA
5,012,233	695,234	21,275,050	4,017,876

DAILY NUMBER OF REPORTED CASES

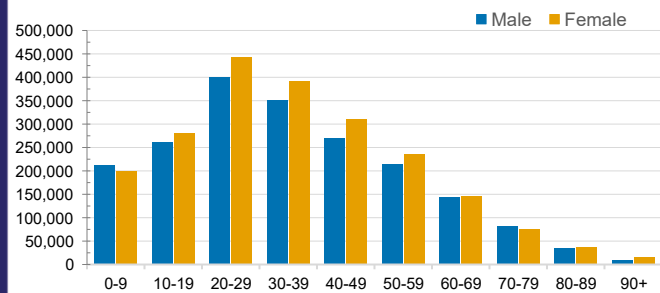


CASES IN AGED CARE SERVICES

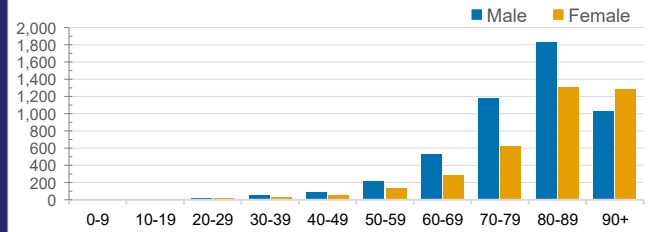
Confirmed Cases	Australia	ACT	NSW	NT	QLD	SA	TAS	VIC	WA
Residential Care Recipients	53898 (2749)	665 (34)	18430 (897)	108 (6)	8317 (340)	4277 (214)	1208 (23)	16440 (1079)	4453 (156)
In Home Care Recipients	42,368	785	15,195	176	7,622	4,034	657	9,131	4,768

Cases in care recipients (deaths)

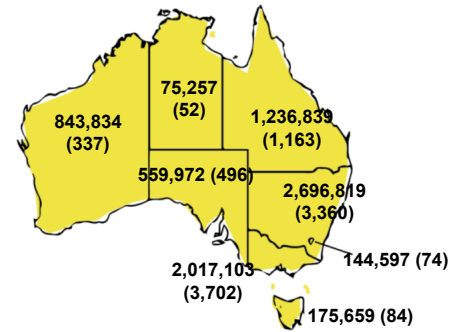
CASES BY AGE GROUP AND SEX



DEATHS BY AGE GROUP AND SEX

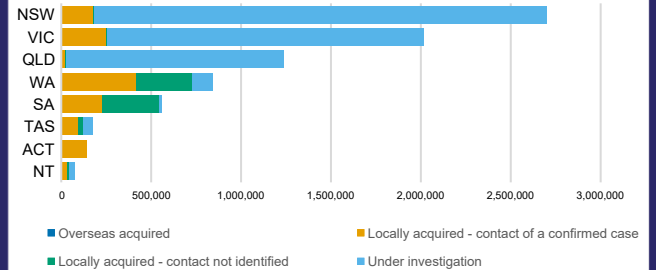


CASES (DEATHS) BY STATE AND TERRITORIES



CASES BY SOURCE OF INFECTION

Australia (% of all confirmed cases)



PUBLIC HEALTH RESPONSE MEASURE

Proportion of total cases under investigation

