



**CURRENT STATUS OF CONFIRMED CASES**



**104**



ACT	NSW	NT	QLD	SA	TAS	VIC	WA
2	42	1	5	8	2	35	9



ACT	NSW	NT	QLD	SA	TAS	VIC	WA
97	1,355	21	391	246	43	476	258

**72,900,494**

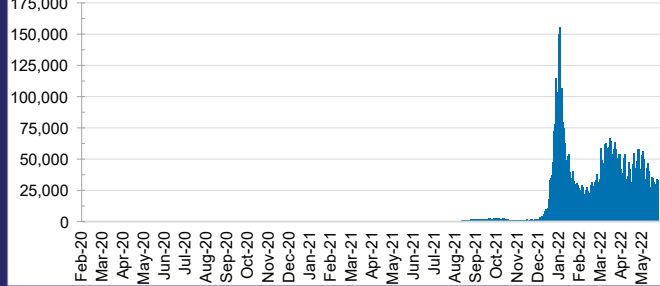


**TOTAL TESTS REPORTED**

ACT	NSW	NT	QLD
1,153,222	32,309,670	796,123	7,714,776

SA	TAS	VIC	WA
4,993,959	693,206	21,238,689	4,000,849

**DAILY NUMBER OF REPORTED CASES**

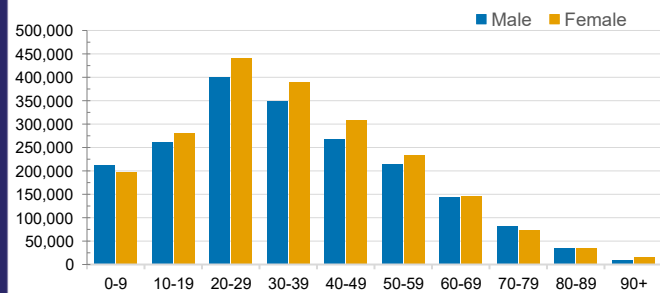


**CASES IN AGED CARE SERVICES**

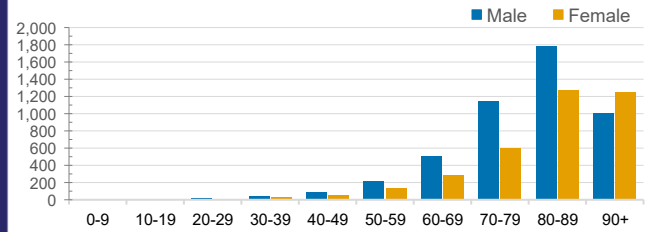
Confirmed Cases	Australia	ACT	NSW	NT	QLD	SA	TAS	VIC	WA
Residential Care Recipients	52914 (2724)	658 (34)	18097 (888)	108 (6)	8096 (335)	4231 (210)	1190 (22)	16219 (1077)	4315 (152)
In Home Care Recipients	41,808	781	15,024	173	7,518	3,991	637	8,978	4,706

Cases in care recipients (deaths)

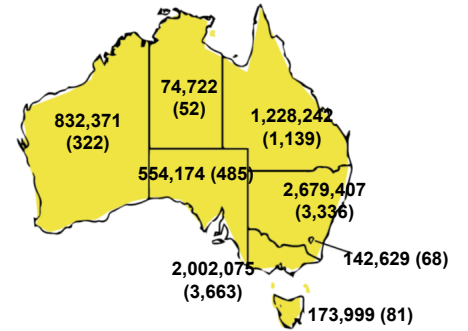
**CASES BY AGE GROUP AND SEX**



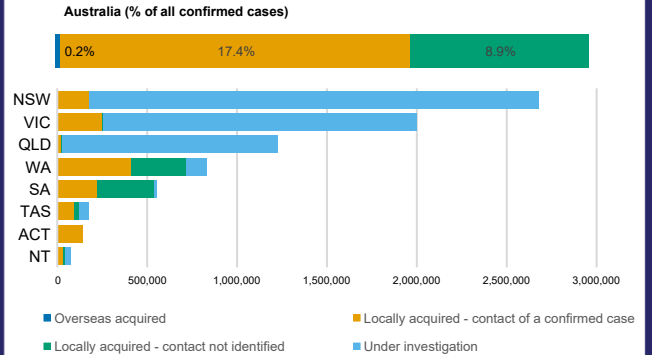
**DEATHS BY AGE GROUP AND SEX**



**CASES (DEATHS) BY STATE AND TERRITORIES**



**CASES BY SOURCE OF INFECTION**



**PUBLIC HEALTH RESPONSE MEASURE**

