



**CURRENT STATUS OF CONFIRMED CASES**



**98**



| ACT | NSW | NT | QLD | SA | TAS | VIC | WA |
|-----|-----|----|-----|----|-----|-----|----|
| 1   | 41  | 0  | 9   | 5  | 2   | 28  | 12 |



**2,707**

| ACT | NSW   | NT | QLD | SA  | TAS | VIC | WA  |
|-----|-------|----|-----|-----|-----|-----|-----|
| 83  | 1,250 | 13 | 301 | 235 | 34  | 512 | 279 |

**72,625,179**

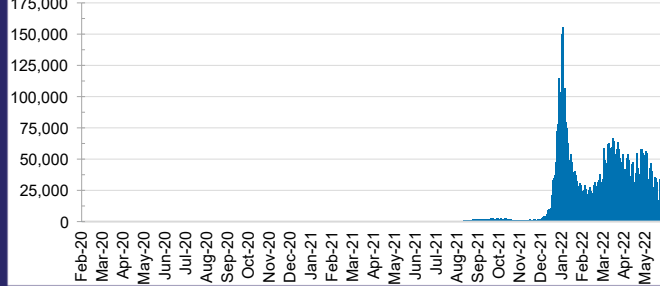


**TOTAL TESTS REPORTED**

| ACT       | NSW        | NT      | QLD       |
|-----------|------------|---------|-----------|
| 1,144,997 | 32,198,317 | 793,426 | 7,685,464 |

| SA        | TAS     | VIC        | WA        |
|-----------|---------|------------|-----------|
| 4,965,049 | 689,119 | 21,188,609 | 3,960,198 |

**DAILY NUMBER OF REPORTED CASES**

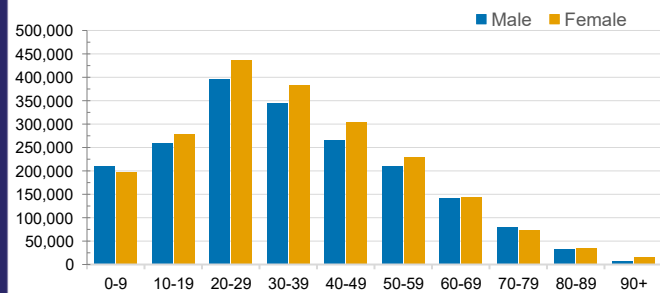


**CASES IN AGED CARE SERVICES**

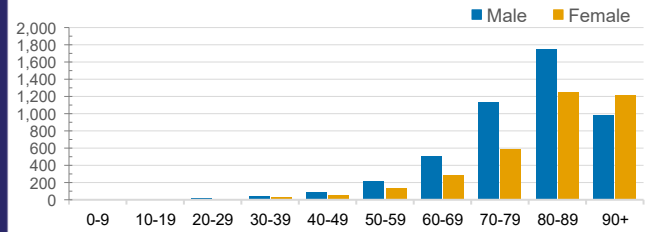
| Confirmed Cases             | Australia    | ACT      | NSW         | NT      | QLD        | SA         | TAS       | VIC          | WA         |
|-----------------------------|--------------|----------|-------------|---------|------------|------------|-----------|--------------|------------|
| Residential Care Recipients | 51445 (2670) | 636 (34) | 17598 (869) | 108 (6) | 7891 (327) | 4161 (209) | 1148 (22) | 15824 (1062) | 4079 (141) |
| In Home Care Recipients     | 41,188       | 751      | 14,846      | 167     | 7,444      | 3,977      | 617       | 8,844        | 4,542      |

Cases in care recipients (deaths)

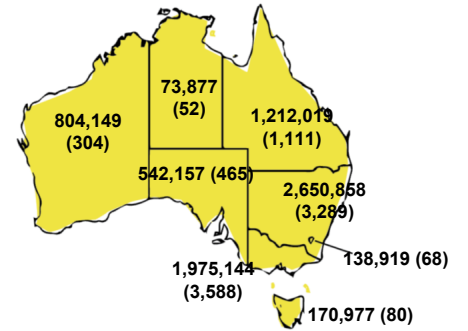
**CASES BY AGE GROUP AND SEX**



**DEATHS BY AGE GROUP AND SEX**

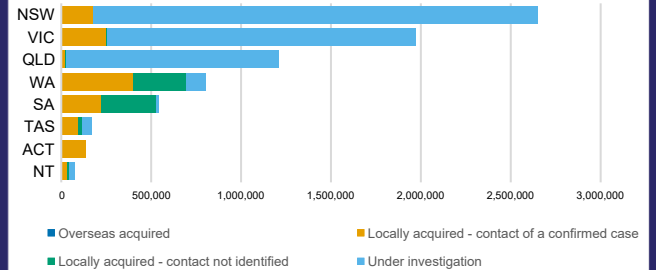


**CASES (DEATHS) BY STATE AND TERRITORIES**



**CASES BY SOURCE OF INFECTION**

Australia (% of all confirmed cases)



**PUBLIC HEALTH RESPONSE MEASURE**

Proportion of total cases under investigation

