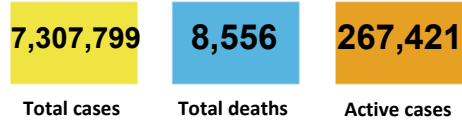




CURRENT STATUS OF CONFIRMED CASES



87

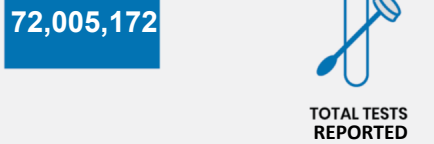


ACT	NSW	NT	QLD	SA	TAS	VIC	WA
5	31	1	5	6	1	30	8



2,686

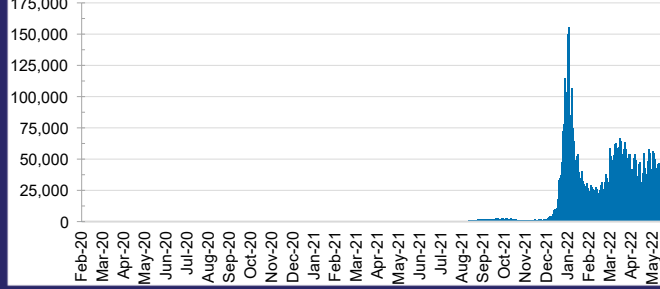
ACT	NSW	NT	QLD	SA	TAS	VIC	WA
84	1,143	15	326	244	48	528	298



ACT	NSW	NT	QLD
1,128,522	31,959,329	787,893	7,617,601

SA	TAS	VIC	WA
4,895,418	680,094	21,062,550	3,873,765

DAILY NUMBER OF REPORTED CASES

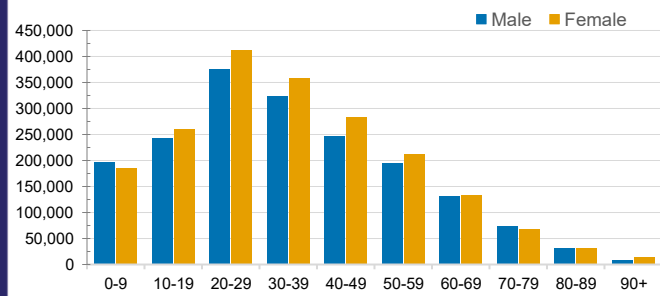


CASES IN AGED CARE SERVICES

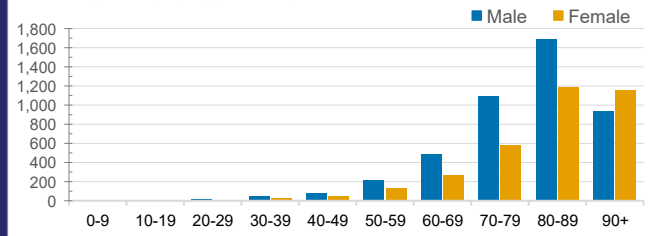
Confirmed Cases	Australia	ACT	NSW	NT	QLD	SA	TAS	VIC	WA
Residential Care Recipients	47697 (2552)	540 (30)	16517 (827)	116 (6)	7551 (320)	3950 (207)	1038 (24)	14595 (1032)	3390 (106)
In Home Care Recipients	39,482	713	14,382	168	7,260	3,914	595	8,347	4,103

Cases in care recipients (deaths)

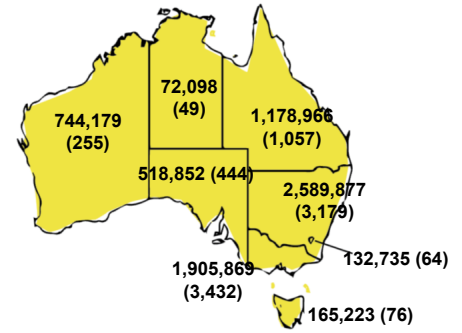
CASES BY AGE GROUP AND SEX



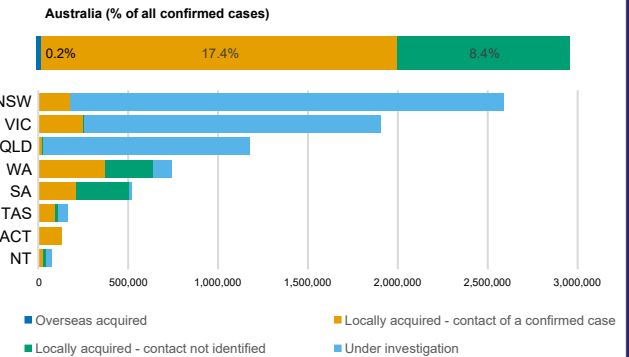
DEATHS BY AGE GROUP AND SEX



CASES (DEATHS) BY STATE AND TERRITORIES



CASES BY SOURCE OF INFECTION



PUBLIC HEALTH RESPONSE MEASURE

