



**Australian Government**

**Operation COVID Shield**

# COVID-19 Vaccine Roll-out Jurisdictional Breakdowns

24 May 2022

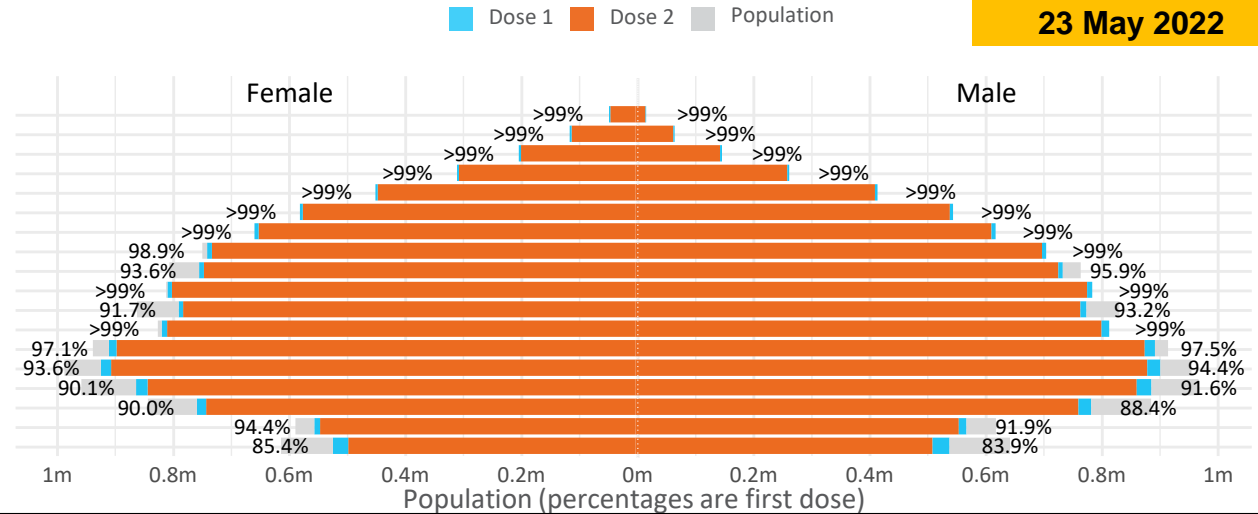
# Doses by age and sex

First and second doses by age and sex

	16+	50+	12-15	5-11
Dose 1	97.27% (20,056,775 doses / 20,619,959 people)	>99% (8,887,986 doses / 8,749,703 people)	84.65% (1,053,027 doses / 1,243,990 people)	52.71% (1,199,915 doses / 2,276,638 people)
Dose 2	95.65% (19,723,507 doses / 20,619,959 people)	>99% (8,781,395 doses / 8,749,703 people)	80.21% (997,810 doses / 1,243,990 people)	38.41% (874,475 doses / 2,276,638 people)

Data as at:  
23 May 2022

Age	Dose 1	Dose 2
95+	63,526 (>99%)	60,120 (>99%)
90-94	179,287 (>99%)	173,717 (>99%)
85-89	347,132 (>99%)	340,239 (>99%)
80-84	567,521 (>99%)	560,279 (>99%)
75-79	857,910 (>99%)	849,533 (>99%)
70-74	1,116,405 (>99%)	1,105,295 (>99%)
65-69	1,266,642 (>99%)	1,252,252 (>99%)
60-64	1,433,654 (>99%)	1,417,476 (98.7%)
55-59	1,475,776 (94.9%)	1,459,254 (93.8%)
50-54	1,580,133 (>99%)	1,563,230 (>99%)
45-49	1,551,323 (92.5%)	1,532,841 (91.4%)
40-44	1,620,378 (>99%)	1,596,419 (98.5%)
35-39	1,790,315 (97.6%)	1,758,367 (95.8%)
30-34	1,816,616 (94.4%)	1,775,046 (92.3%)
25-29	1,743,363 (91.4%)	1,695,987 (89.0%)
20-24	1,532,766 (89.5%)	1,493,311 (87.2%)
16-19	1,114,028 (93.2%)	1,090,141 (91.2%)
12-15	1,053,027 (84.6%)	997,810 (80.2%)



	AUS	ACT	NSW	NT	QLD	SA	TAS	VIC	WA
16 and over - dose 1	20,056,775	352,704	6,327,238	173,939	3,860,547	1,375,048	444,891	5,160,486	2,095,311
16 and over - dose 2	19,723,507	347,089	6,230,756	169,246	3,796,881	1,345,808	435,855	5,083,484	2,064,087
16 and over - population	20,619,959*	344,037	6,565,651	190,571	4,112,707	1,440,400	440,172	5,407,574	2,114,978
16 and over % with dose 1	97.27%	>99%	96.37%	91.27%	93.87%	95.46%	>99%	95.43%	>99%
16 and over % with dose 2	95.65%	>99%	94.90%	88.81%	92.32%	93.43%	>99%	94.01%	97.59%
5 to 11 - dose 1	1,199,915	31,916	358,025	13,235	208,288	84,109	28,624	326,435	141,451
5 to 11 - dose 2	874,475	26,864	265,697	8,373	146,366	61,486	22,795	239,219	99,133
5 to 11 - population	2,276,638	39,789	716,460	24,750	478,731	148,816	45,033	578,499	244,154
5 to 11 % with dose 1	52.71%	80.21%	49.97%	53.47%	43.51%	56.52%	63.56%	56.43%	57.94%
5 to 11 % with dose 2	38.41%	67.52%	37.08%	33.83%	30.57%	41.32%	50.62%	41.35%	40.60%
12 to 15 - dose 1	1,053,027	20,092	323,852	10,818	206,429	68,354	22,923	275,134	115,832
12 to 15 - dose 2	997,810	19,558	309,577	9,741	193,251	64,703	21,819	263,426	107,369
12 to 15 - population	1,243,990	19,693	390,330	13,060	270,146	82,747	26,308	308,611	132,869
12 to 15 % with dose 1	84.65%	>99%	82.97%	82.83%	76.41%	82.61%	87.13%	89.15%	87.18%
12 to 15 % with dose 2	80.21%	>99%	79.31%	74.59%	71.54%	78.19%	82.94%	85.36%	80.81%

\*National population will not equal sum of listed jurisdictions due to a small number of people counted in national population residing in some 'other' territories. Sum of state doses will not add to national total as some records are unable to be geocoded to a State or Territory. Doses sourced from Australian Immunisation Register, population from ABS ERP June 2020

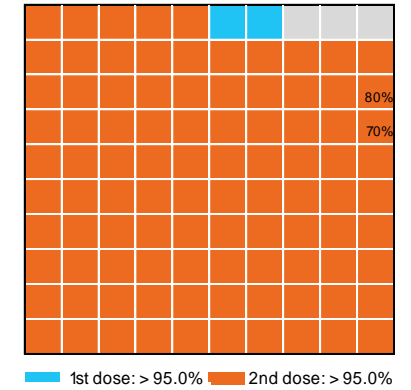
# Vaccinations by State – National Summary

Data as at: 23 May 2022

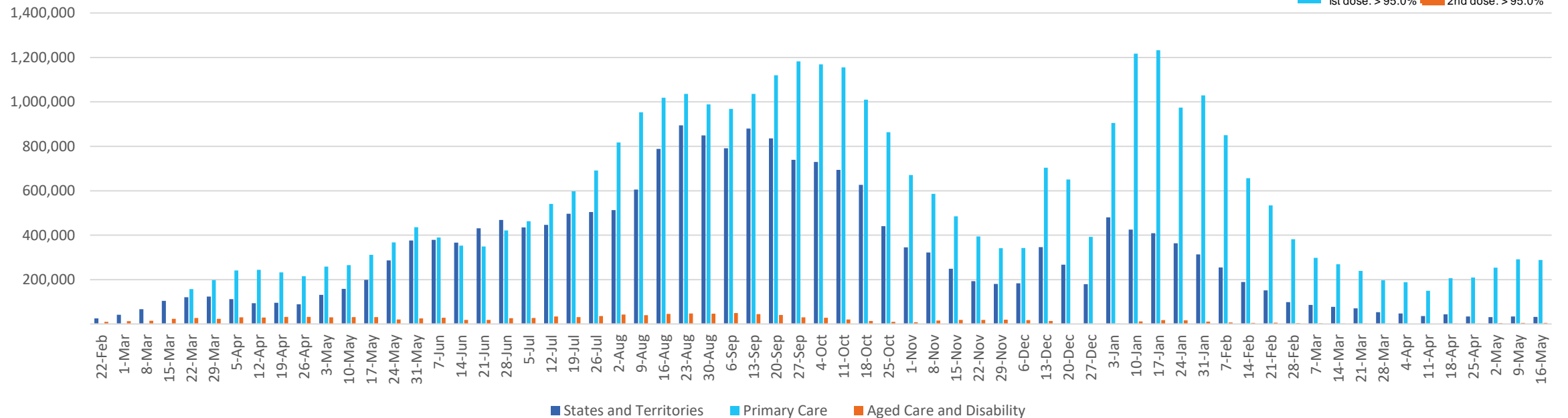
Past 7 days

	17/05/2022	18/05/2022	19/05/2022	20/05/2022	21/05/2022	22/05/2022	23/05/2022	7 day total
State and Territory	5,767	7,614	7,753	6,443	4,396	1,985	4,624	38,582
Aged Care and Disability	741	1,477	1,360	1,380	327	156	920	6,361
Primary Care	60,057	60,468	60,748	54,691	15,118	6,277	49,865	307,224
Total (rounded)	67 K	70 K	70 K	63 K	20 K	8 K	55 K	352 K

Eligible population by % coverage



## Doses administered by channel

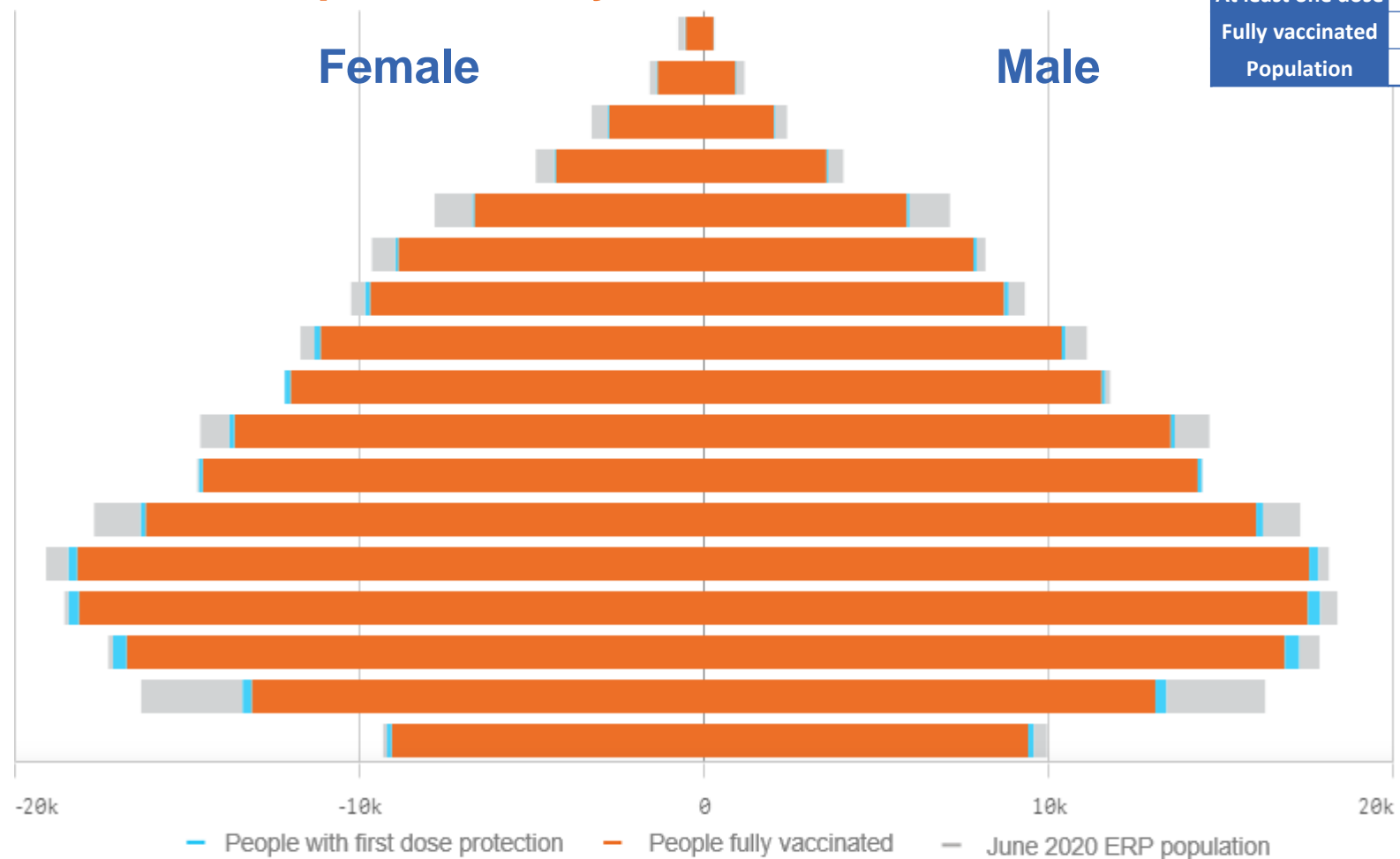


\*Administration state breakdown indicates state in which a vaccine was administered and may differ to residential state. Recent weeks may be understated.

Data as at:  
23 May 2022

# Vaccinations by State or Territory of residence

## Australian Capital Territory



	16+	50+	70+
At least one dose	>95% 352,704	>95% 137,563	>95% 45,647
Fully vaccinated	>95% 347,089	>95% 135,745	>95% 45,008
Population	344,037	127,802	39,946

Age	At least one dose	Fully vaccinated
95+	>95%	>95%
90-94	>95%	>95%
85-89	>95%	>95%
80-84	>95%	>95%
75-79	>95%	>95%
70-74	>95%	>95%
65-69	>95%	>95%
60-64	>95%	>95%
55-59	>95%	>95%
50-54	>95%	>95%
45-49	>95%	>95%
40-44	>95%	>95%
35-39	>95%	>95%
30-34	>95%	>95%
25-29	>95%	>95%
20-24	82.76%	80.73%
16-19	>95%	>95%

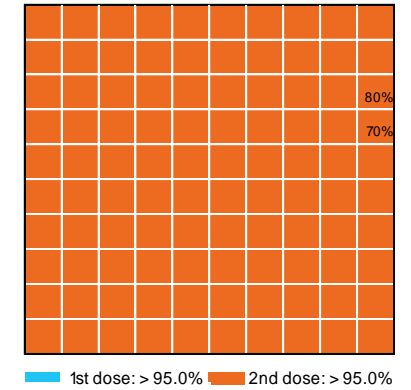
# Vaccinations by State – Australian Capital Territory

Data as at:  
23 May 2022

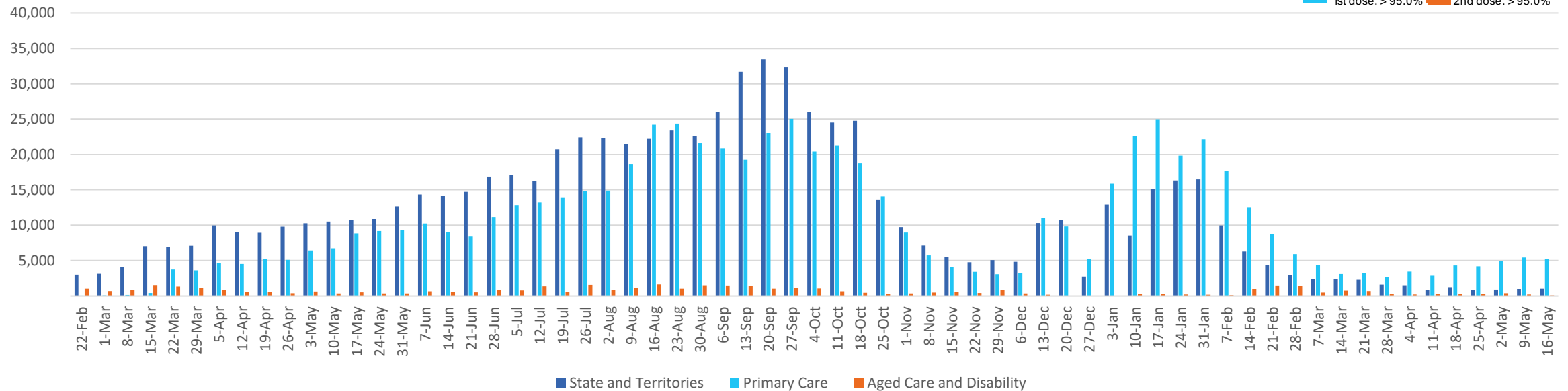
Past 7 days

	17/05/2022	18/05/2022	19/05/2022	20/05/2022	21/05/2022	22/05/2022	23/05/2022	7 day total
State and Territory	738	710	819	753	347	228	662	4,257
Aged Care and Disability	<10	38	24	21	15	<10	<10	<10**
Primary Care	1,321	1,060	1,123	946	298	32	1,210	5,990
Total (rounded)	2 K	2 K	2 K	2 K	1 K	0 K	2 K	10 K

Eligible population by % coverage



## Doses administered by channel



\*Administration state breakdown indicates state in which a vaccine was administered and may differ to residential state. Recent weeks may be understated.

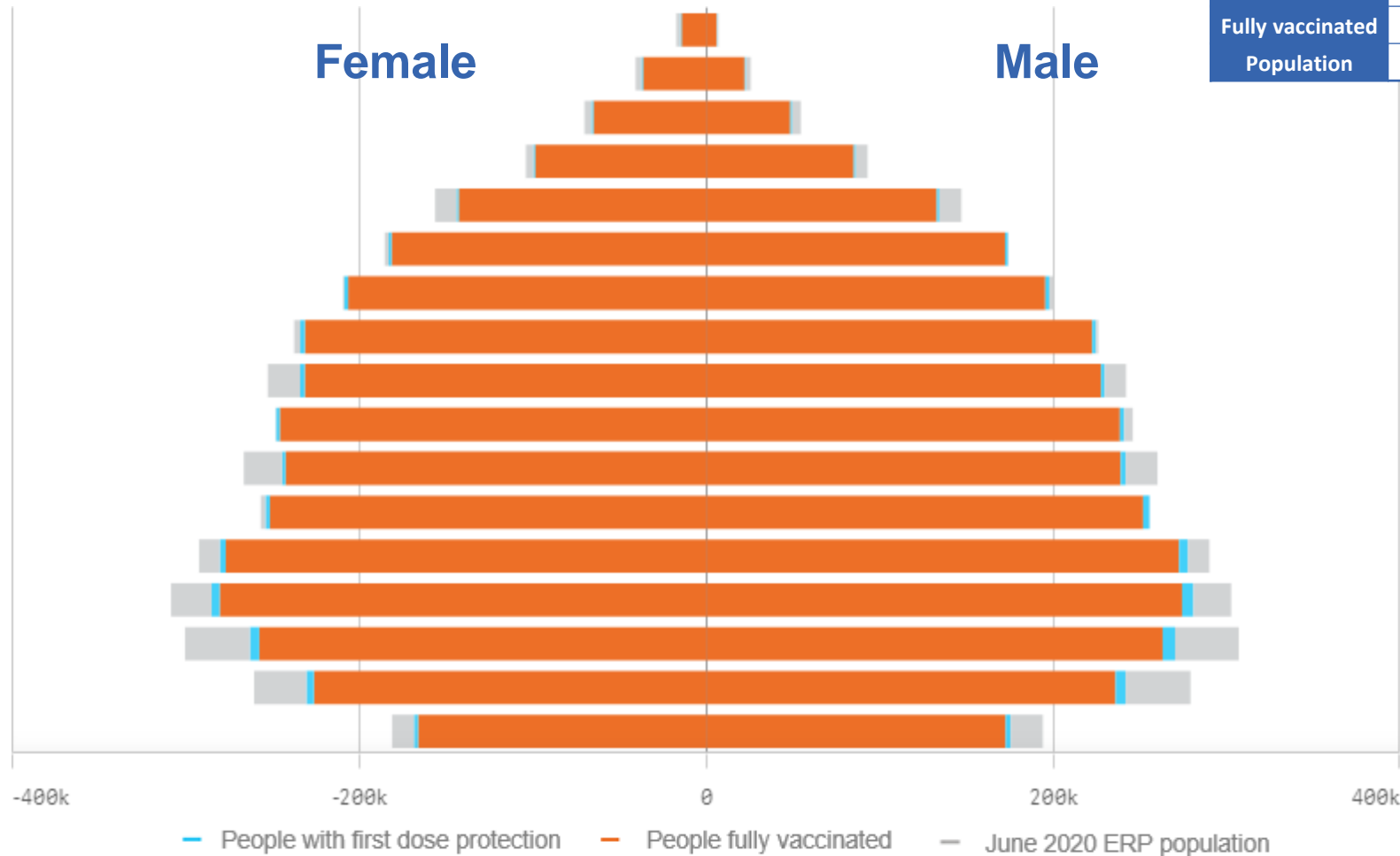
\*\*Total appears lower due to historic changes.

Data as at:  
23 May 2022

# Vaccinations by State or Territory of residence

## New South Wales

	16+	50+	70+
At least one dose	>95% 6,327,238	>95% 2,842,427	>95% 1,019,991
Fully vaccinated	94.90% 6,230,756	>95% 2,808,943	>95% 1,006,692
Population	6,565,651	2,807,793	962,606



Age	At least one dose	Fully vaccinated
95+	>95%	>95%
90-94	>95%	>95%
85-89	>95%	>95%
80-84	>95%	>95%
75-79	>95%	>95%
70-74	>95%	>95%
65-69	>95%	>95%
60-64	>95%	>95%
55-59	93.90%	92.85%
50-54	>95%	>95%
45-49	92.48%	91.49%
40-44	>95%	>95%
35-39	>95%	94.58%
30-34	93.10%	91.13%
25-29	88.37%	86.13%
20-24	87.87%	85.86%
16-19	91.78%	90.32%

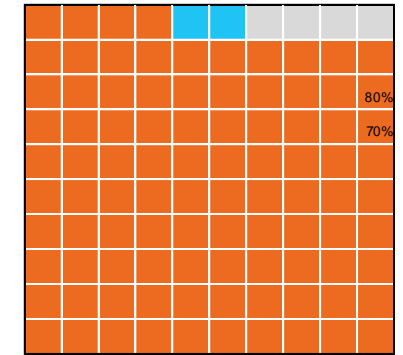
# Vaccinations by State – New South Wales

Data as at: 23 May 2022

Past 7 days

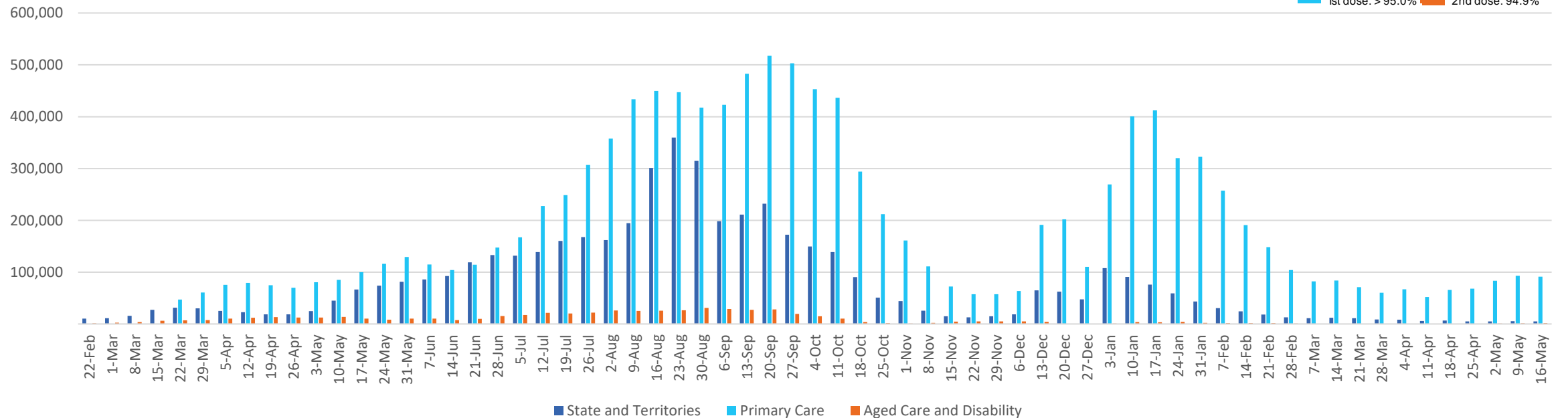
	17/05/2022	18/05/2022	19/05/2022	20/05/2022	21/05/2022	22/05/2022	23/05/2022	7 day total
State and Territory	226	1,127	1,551	1,077	953	402	790	6,126
Aged Care and Disability	387	487	268	503	44	<10	362	2,051
Primary Care	19,190	19,544	19,626	17,493	5,109	1,893	16,215	99,070
Total (rounded)	20 K	21 K	21 K	19 K	6 K	2 K	17 K	107 K

Eligible population by % coverage



1st dose: > 95.0% 2nd dose: 94.9%

## Doses administered by channel

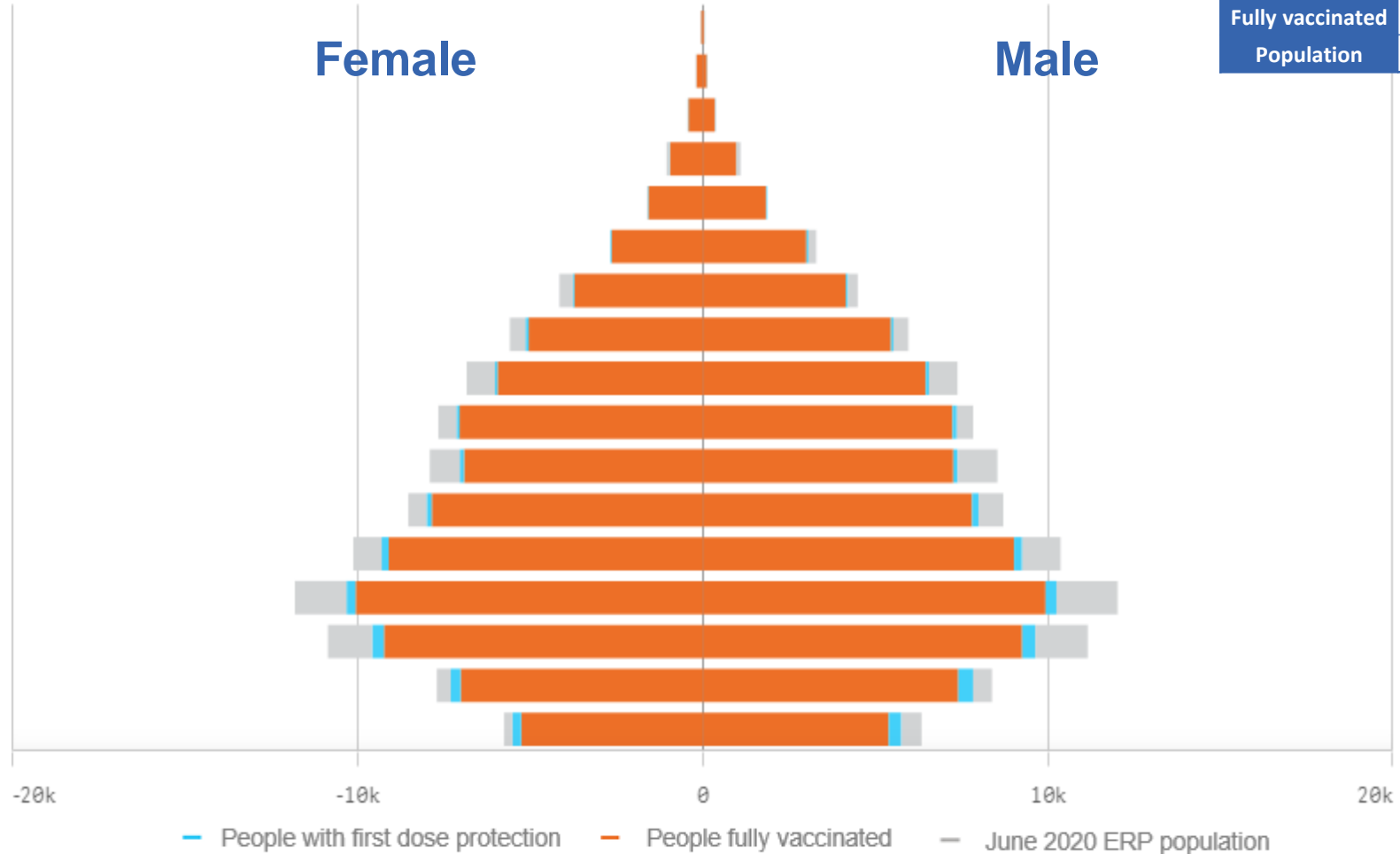


\*Administration state breakdown indicates state in which a vaccine was administered and may differ to residential state. Recent weeks may be understated.

Data as at:  
23 May 2022

# Vaccinations by State or Territory of residence

## Northern Territory



	16+		50+		70+	
At least one dose	91.27%	173,939	93.38%	58,159	>95%	12,356
Fully vaccinated	88.81%	169,246	91.96%	57,274	>95%	12,136
Population	190,571		62,280		12,343	

Age	At least one dose	Fully vaccinated
95+	>95%	91.75%
90-94	>95%	93.81%
85-89	>95%	>95%
80-84	>95%	>95%
75-79	>95%	>95%
70-74	>95%	94.77%
65-69	92.39%	91.17%
60-64	92.45%	91.02%
55-59	88.51%	87.32%
50-54	93.75%	92.30%
45-49	87.93%	86.31%
40-44	93.10%	91.05%
35-39	90.91%	88.67%
30-34	86.93%	84.36%
25-29	87.99%	84.56%
20-24	94.43%	89.92%
16-19	93.29%	88.08%



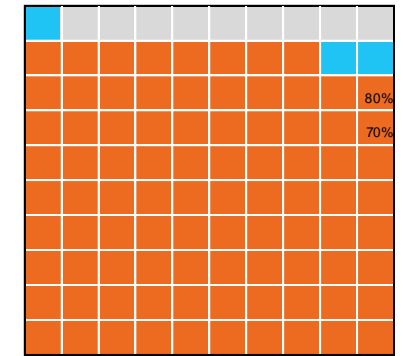
# Vaccinations by State – Northern Territory

Data as at: 23 May 2022

Past 7 days

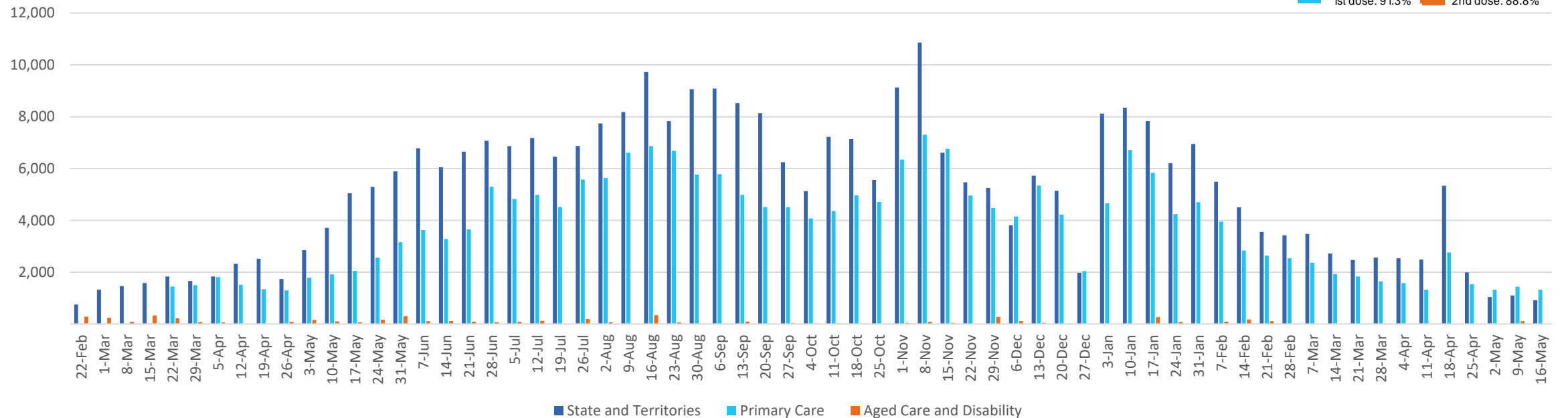
	17/05/2022	18/05/2022	19/05/2022	20/05/2022	21/05/2022	22/05/2022	23/05/2022	7 day total
State and Territory	189	189	247	173	73	11	184	1,066
Aged Care and Disability	<10	<10	<10	<10	<10	<10	<10	<10
Primary Care	299	334	366	233	70	<10	253	1,562
Total (rounded)	0 K	1 K	1 K	0 K	0 K	0 K	0 K	3 K

Eligible population by % coverage



1st dose: 91.3% 2nd dose: 88.8%

## Doses administered by channel

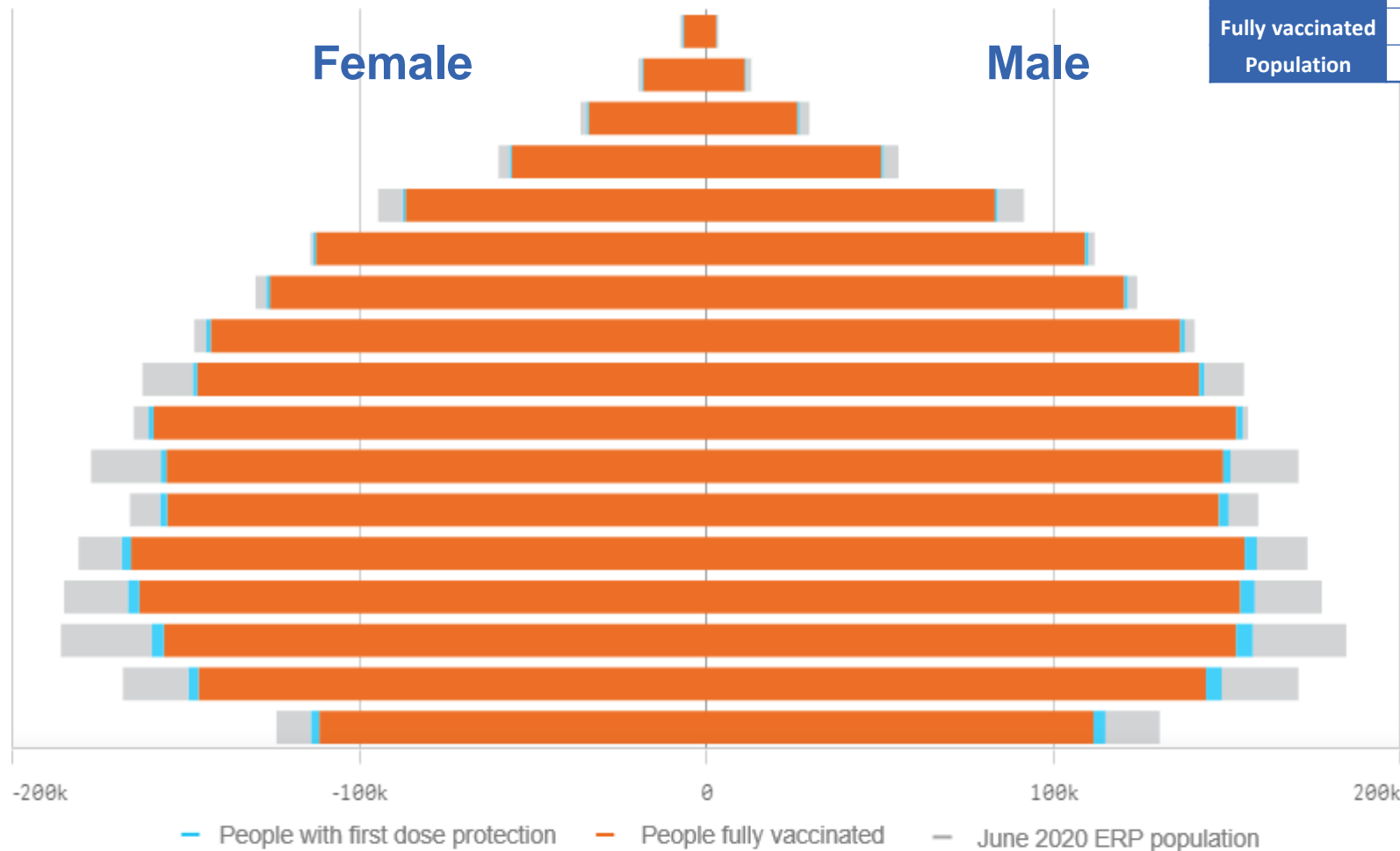


\*Administration state breakdown indicates state in which a vaccine was administered and may differ to residential state. Recent weeks may be understated.

Data as at:  
23 May 2022

# Vaccinations by State or Territory of residence

## Queensland



	16+	50+	70+
At least one dose	93.87% 3,860,547	>95% 1,743,269	>95% 605,234
Fully vaccinated	92.32% 3,796,881	>95% 1,725,041	>95% 597,768
Population	4,112,707	1,758,855	577,767

Age	At least one dose	Fully vaccinated
95+	>95%	>95%
90-94	>95%	>95%
85-89	>95%	>95%
80-84	>95%	>95%
75-79	>95%	>95%
70-74	>95%	>95%
65-69	>95%	>95%
60-64	>95%	>95%
55-59	91.89%	91.01%
50-54	>95%	>95%
45-49	88.65%	87.57%
40-44	94.82%	93.30%
35-39	92.55%	90.74%
30-34	89.90%	87.75%
25-29	86.05%	83.68%
20-24	88.14%	85.85%
16-19	90.05%	87.70%

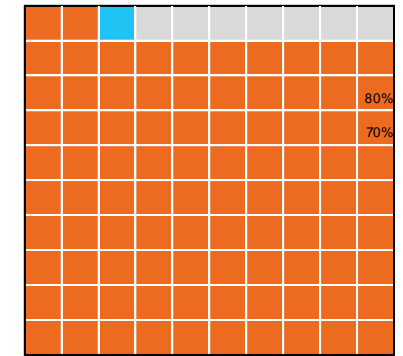
# Vaccinations by State – Queensland

Data as at:  
23 May 2022

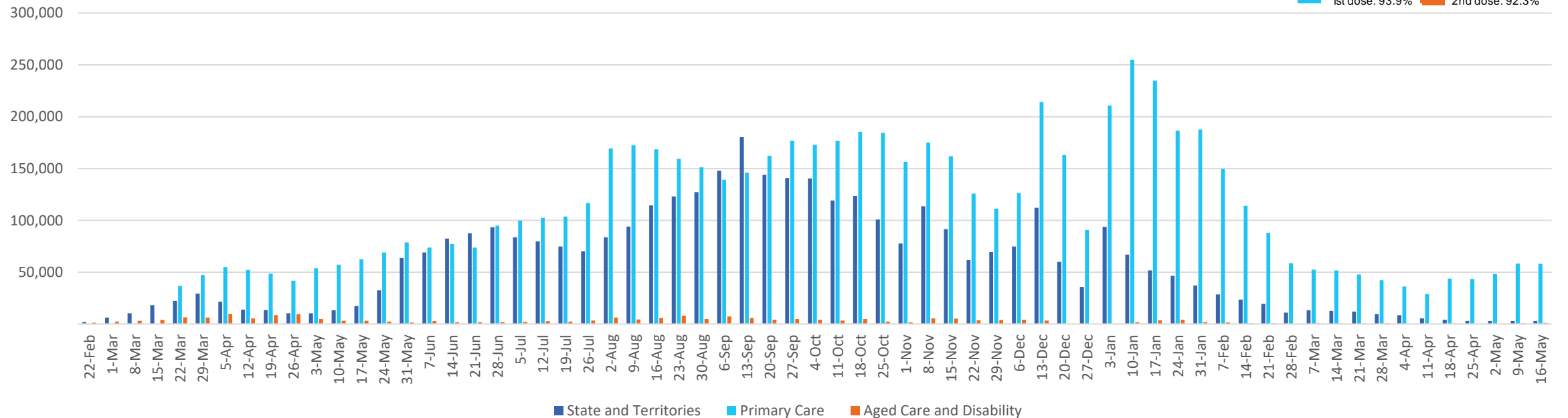
Past 7 days

	17/05/2022	18/05/2022	19/05/2022	20/05/2022	21/05/2022	22/05/2022	23/05/2022	7 day total
State and Territory	709	820	626	666	342	58	319	3,540
Aged Care and Disability	132	251	414	277	43	30	54	1,201
Primary Care	12,248	11,826	12,675	11,085	1,972	1,199	9,536	60,541
Total (rounded)	13 K	13 K	14 K	12 K	2 K	1 K	10 K	65 K

Eligible population by % coverage



## Doses administered by channel

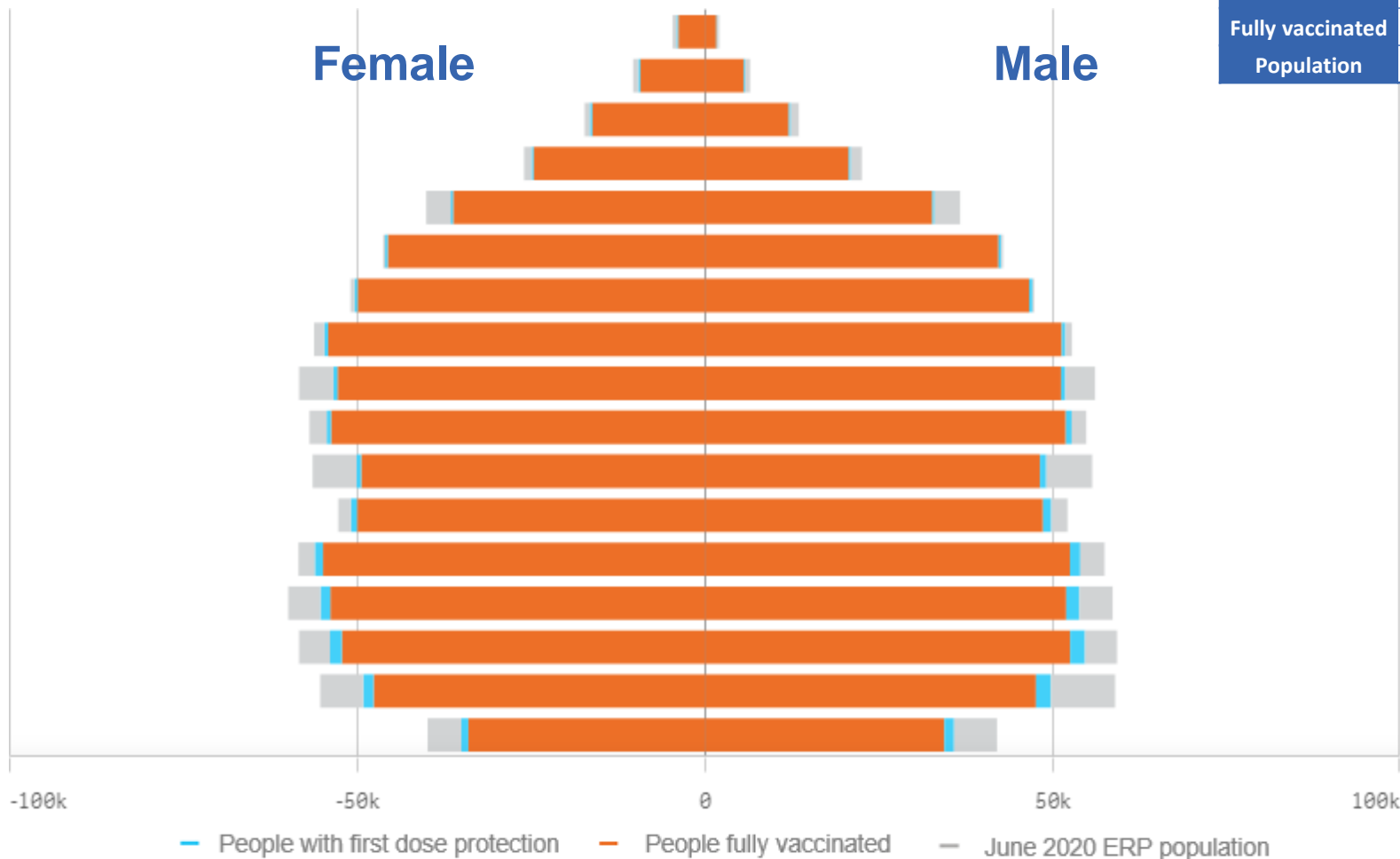


\*Administration state breakdown indicates state in which a vaccine was administered and may differ to residential state. Recent weeks may be understated.

Data as at:  
23 May 2022

# Vaccinations by State or Territory of residence

## South Australia



	16+		50+		70+	
At least one dose	>95%	1,375,048	>95%	672,393	>95%	254,836
Fully vaccinated	93.43%	1,345,808	>95%	663,868	>95%	251,255
Population	1,440,400		674,384		240,514	

Age	At least one dose	Fully vaccinated
95+	>95%	>95%
90-94	>95%	>95%
85-89	>95%	>95%
80-84	>95%	>95%
75-79	>95%	>95%
70-74	>95%	>95%
65-69	>95%	>95%
60-64	>95%	>95%
55-59	92.12%	90.99%
50-54	>95%	94.66%
45-49	88.62%	87.16%
40-44	>95%	94.21%
35-39	>95%	92.98%
30-34	92.89%	89.89%
25-29	93.52%	89.99%
20-24	87.39%	83.99%
16-19	86.74%	83.70%

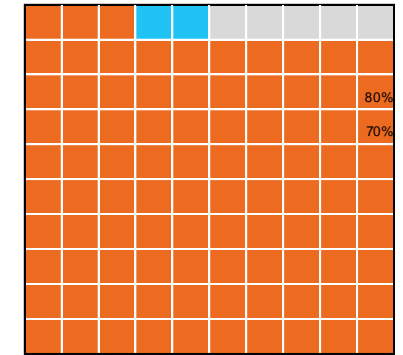
# Vaccinations by State – South Australia

Data as at:  
23 May 2022

Past 7 days

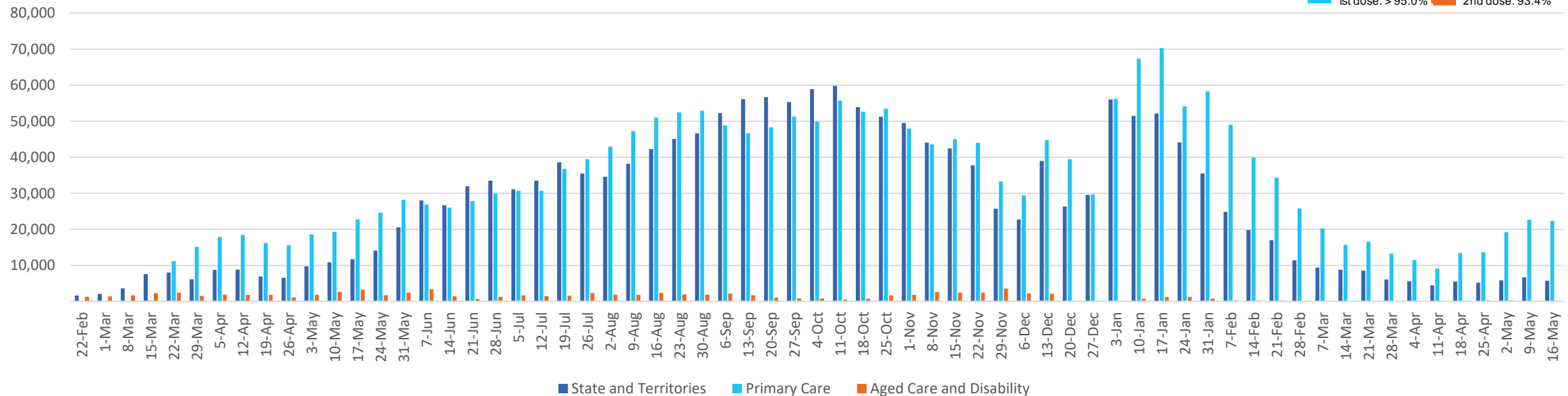
	17/05/2022	18/05/2022	19/05/2022	20/05/2022	21/05/2022	22/05/2022	23/05/2022	7 day total
State and Territory	809	1,311	1,259	1,007	644	336	797	6,163
Aged Care and Disability	14	<10	72	<10	19	<10	<10	107**
Primary Care	4,347	5,007	4,047	4,225	958	281	3,974	22,839
Total (rounded)	5 K	6 K	5 K	5 K	2 K	1 K	5 K	29 K

Eligible population by % coverage



1st dose: > 95.0%  
2nd dose: 93.4%

## Doses administered by channel



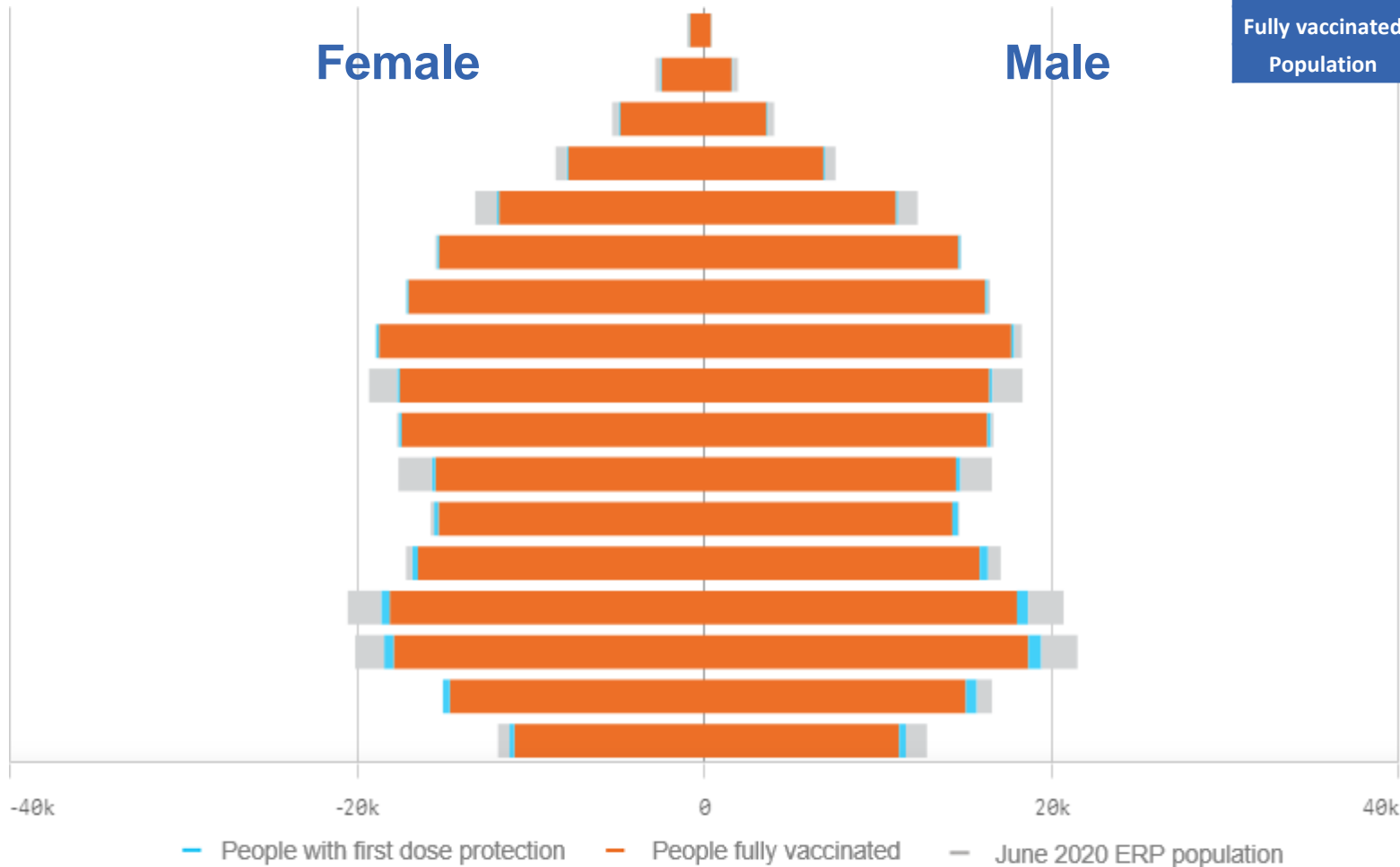
\*Administration state breakdown indicates state in which a vaccine was administered and may differ to residential state. Recent weeks may be understated.

\*\*Total appears lower due to historic changes.

Data as at:  
23 May 2022

# Vaccinations by State or Territory of residence

## Tasmania



	16+		50+		70+	
At least one dose	>95%	444,891	>95%	221,153	>95%	82,324
Fully vaccinated	>95%	435,855	>95%	218,708	>95%	81,229
Population	440,172		220,036		77,155	

Age	At least one dose	Fully vaccinated
95+	>95%	>95%
90-94	>95%	>95%
85-89	>95%	>95%
80-84	>95%	>95%
75-79	>95%	>95%
70-74	>95%	>95%
65-69	>95%	>95%
60-64	>95%	>95%
55-59	91.17%	90.27%
50-54	>95%	>95%
45-49	89.23%	87.78%
40-44	>95%	>95%
35-39	>95%	>95%
30-34	>95%	>95%
25-29	>95%	>95%
20-24	>95%	94.19%
16-19	92.48%	89.77%

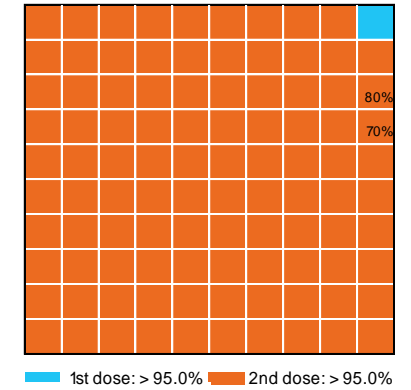
# Vaccinations by State – Tasmania

Data as at:  
23 May 2022

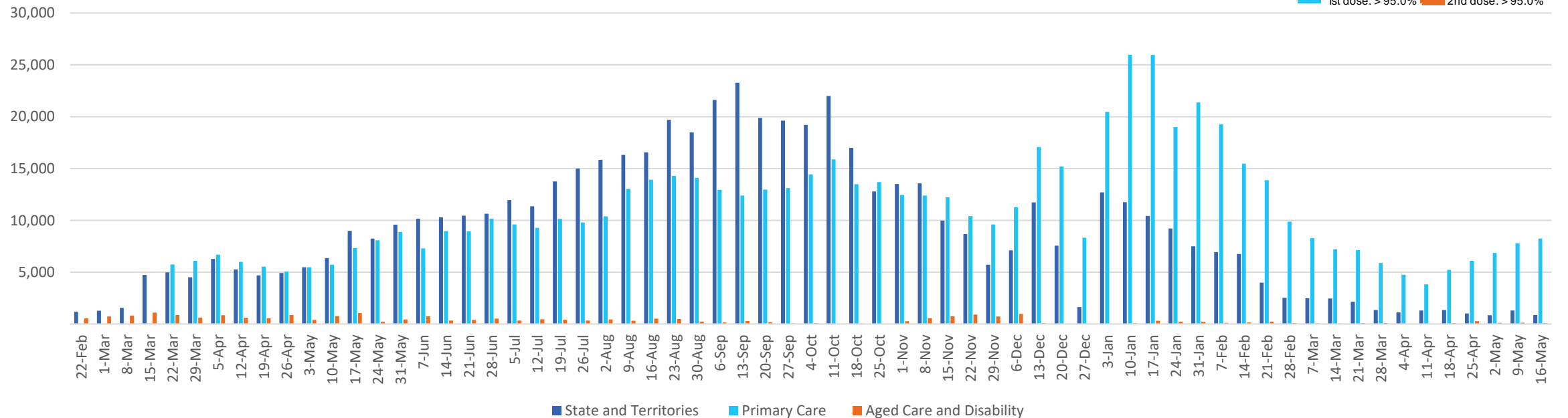
Past 7 days

	17/05/2022	18/05/2022	19/05/2022	20/05/2022	21/05/2022	22/05/2022	23/05/2022	7 day total
State and Territory	266	276	120	134	97	116	95	1,104
Aged Care and Disability	<10	36	29	24	<10	<10	<10	98
Primary Care	1,535	1,591	1,615	1,434	778	75	1,435	8,463
Total (rounded)	2 K	2 K	2 K	2 K	1 K	0 K	2 K	10 K

Eligible population by % coverage



## Doses administered by channel

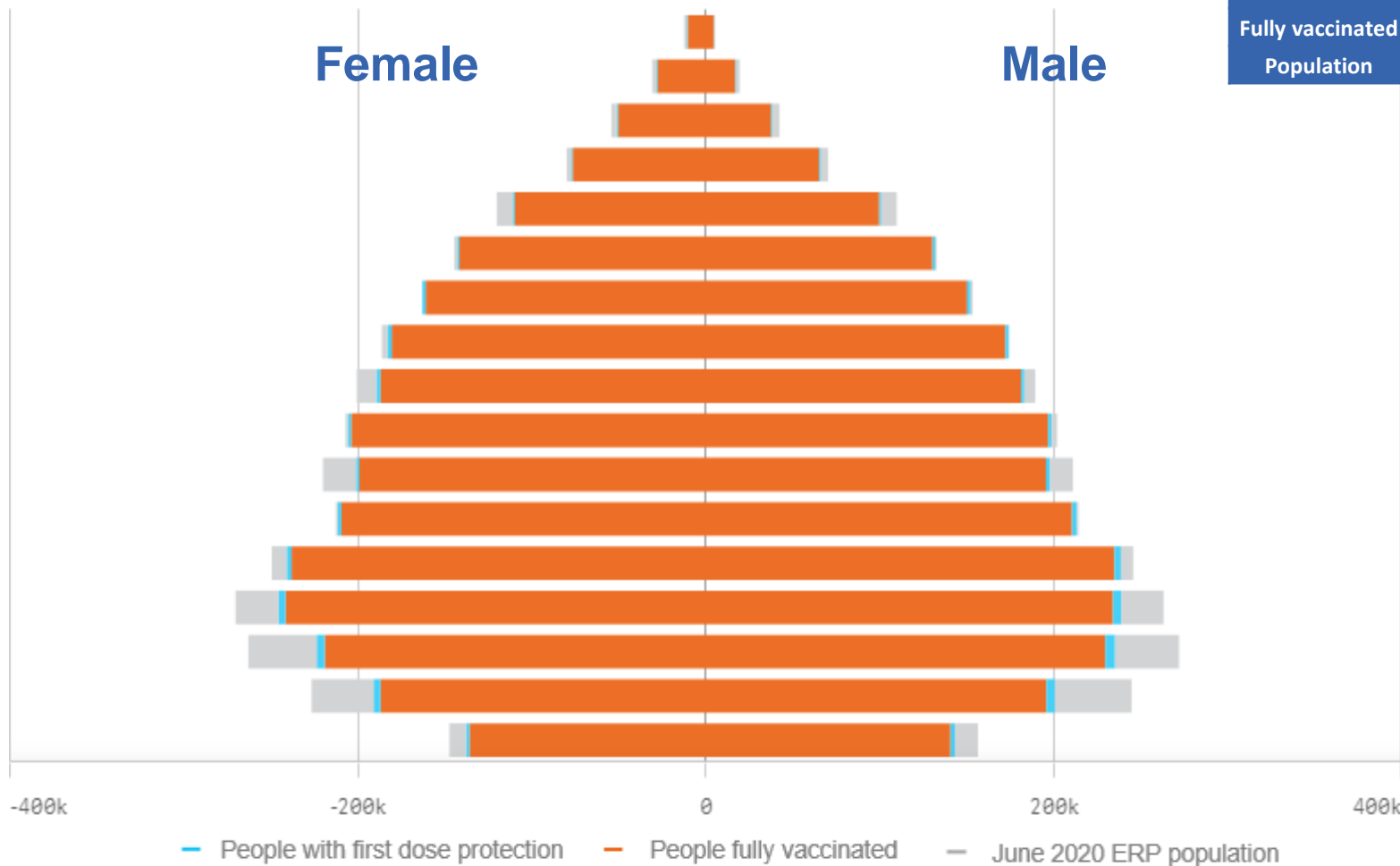


\*Administration state breakdown indicates state in which a vaccine was administered and may differ to residential state. Recent weeks may be understated.

Data as at:  
23 May 2022

# Vaccinations by State or Territory of residence

## Victoria



	16+		50+		70+	
At least one dose	>95%	5,160,486	>95%	2,234,152	>95%	782,838
Fully vaccinated	94.01%	5,083,484	>95%	2,206,563	>95%	772,290
Population	5,407,574		2,211,211		743,519	

Age	At least one dose	Fully vaccinated
95+	>95%	>95%
90-94	>95%	>95%
85-89	>95%	>95%
80-84	>95%	>95%
75-79	>95%	>95%
70-74	>95%	>95%
65-69	>95%	>95%
60-64	>95%	>95%
55-59	>95%	94.45%
50-54	>95%	>95%
45-49	92.58%	91.63%
40-44	>95%	>95%
35-39	>95%	>95%
30-34	91.05%	89.33%
25-29	86.10%	84.11%
20-24	83.28%	81.37%
16-19	92.58%	91.08%



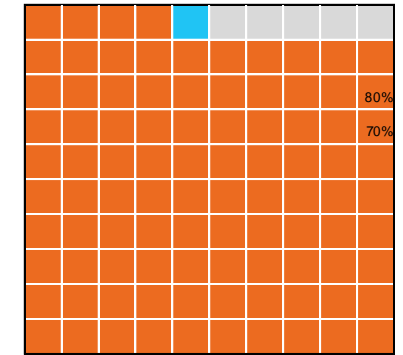
# Vaccinations by State – Victoria

Data as at:  
23 May 2022

## Past 7 days

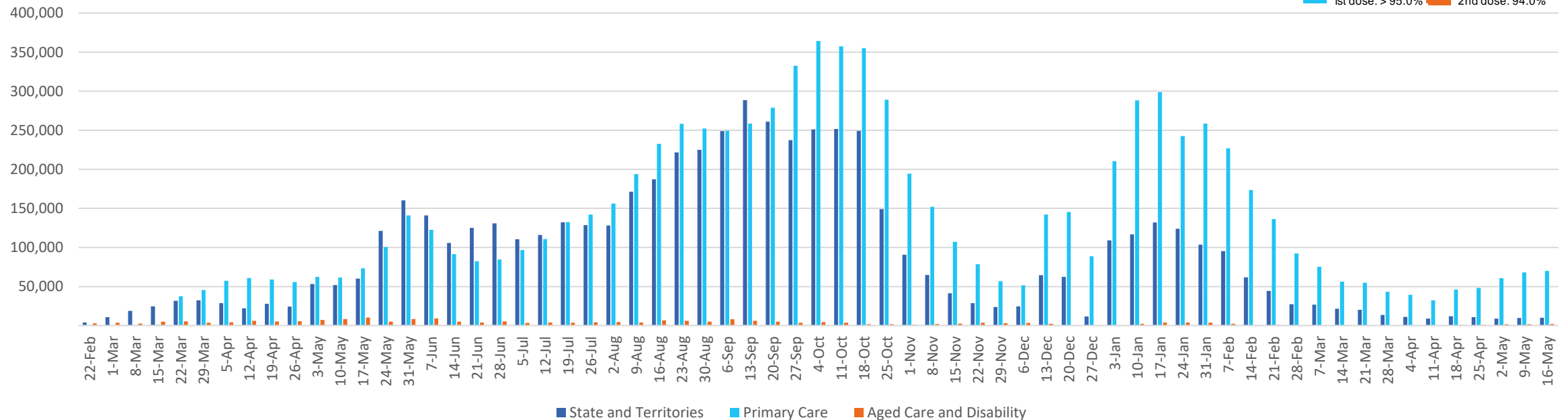
	17/05/2022	18/05/2022	19/05/2022	20/05/2022	21/05/2022	22/05/2022	23/05/2022	7 day total
State and Territory	1,886	1,871	1,955	1,676	1,327	495	1,093	10,303
Aged Care and Disability	334	505	487	533	190	128	490	2,667
Primary Care	14,617	14,663	14,692	13,503	3,801	1,856	11,914	75,046
Total (rounded)	17 K	17 K	17 K	16 K	5 K	2 K	13 K	88 K

## Eligible population by % coverage



1st dose: > 95.0% 2nd dose: 94.0%

## Doses administered by channel

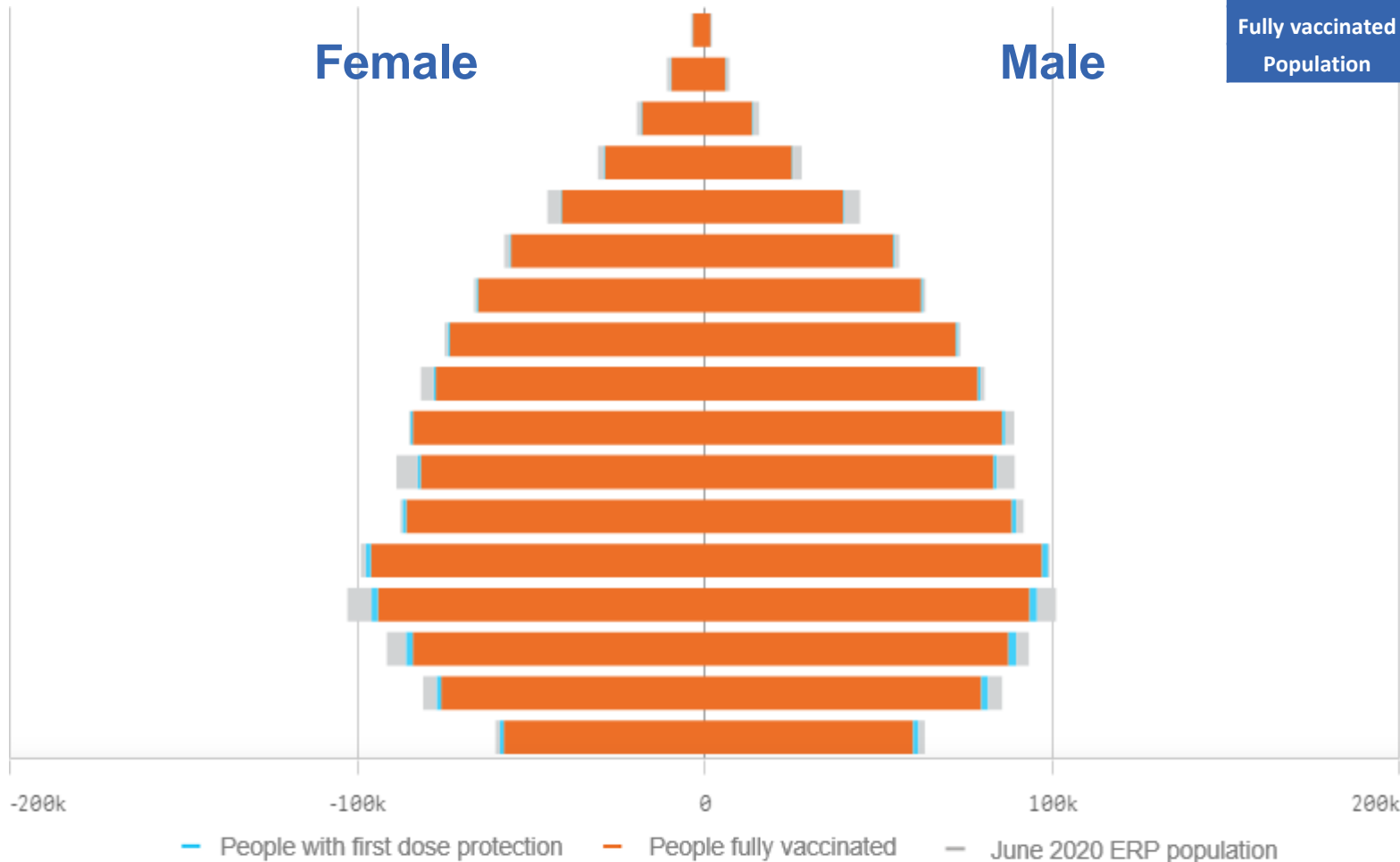


\*Administration state breakdown indicates state in which a vaccine was administered and may differ to residential state. Recent weeks may be understated.

Data as at:  
23 May 2022

# Vaccinations by State or Territory of residence

## Western Australia



	16+		50+		70+	
At least one dose	>95%	2,095,311	>95%	905,831	>95%	301,153
Fully vaccinated	>95%	2,064,087	>95%	896,974	>95%	297,611
Population	2,114,978		885,370		280,281	

Age	At least one dose	Fully vaccinated
95+	>95%	>95%
90-94	>95%	>95%
85-89	>95%	>95%
80-84	>95%	>95%
75-79	>95%	>95%
70-74	>95%	>95%
65-69	>95%	>95%
60-64	>95%	>95%
55-59	>95%	>95%
50-54	>95%	>95%
45-49	93.77%	92.72%
40-44	>95%	>95%
35-39	>95%	>95%
30-34	94.25%	92.24%
25-29	>95%	93.08%
20-24	>95%	93.48%
16-19	>95%	>95%

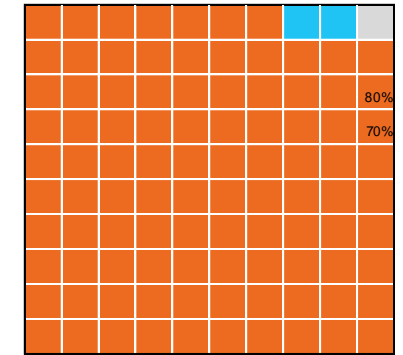
# Vaccinations by State – Western Australia

Data as at:  
23 May 2022

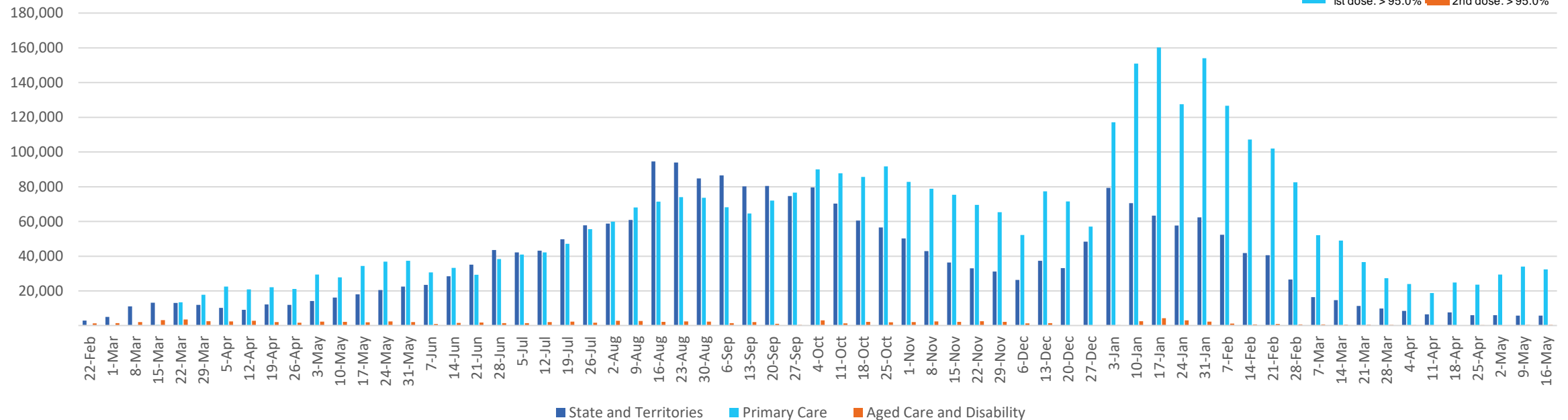
Past 7 days

	17/05/2022	18/05/2022	19/05/2022	20/05/2022	21/05/2022	22/05/2022	23/05/2022	7 day total
State and Territory	944	1,310	1,176	957	613	339	684	6,023
Aged Care and Disability	128	158	66	21	<10	<10	28	409
Primary Care	6,500	6,443	6,604	5,772	2,132	934	5,328	33,713
Total (rounded)	8 K	8 K	8 K	7 K	3 K	1 K	6 K	40 K

Eligible population by % coverage



## Doses administered by channel



\*Administration state breakdown indicates state in which a vaccine was administered and may differ to residential state. Recent weeks may be understated.