



**Australian Government**

**Operation COVID Shield**

# COVID-19 Vaccine Roll-out Jurisdictional Breakdowns

22 May 2022

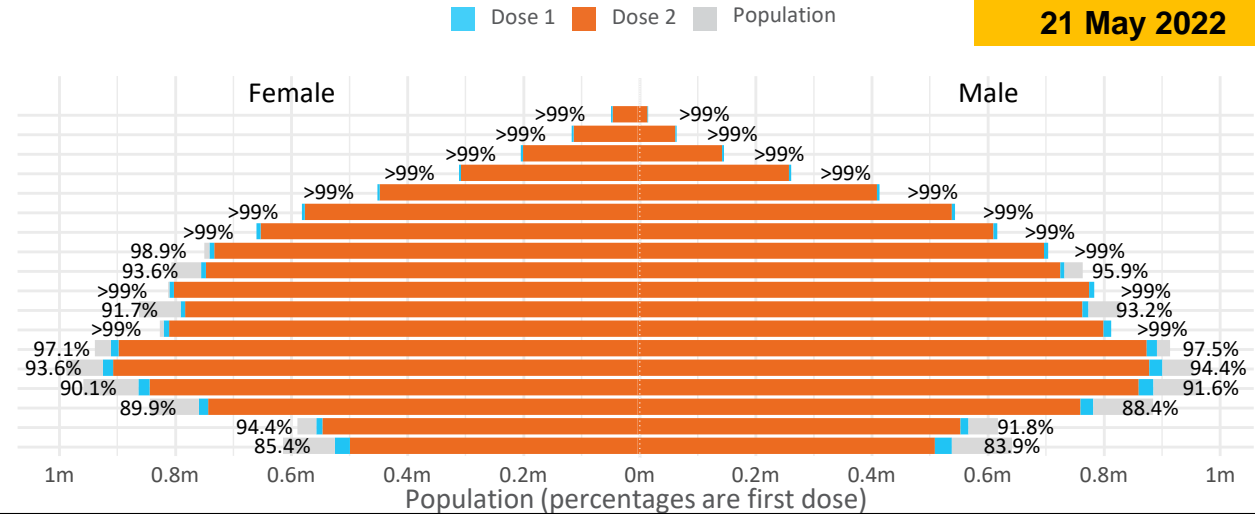
# Doses by age and sex

First and second doses by age and sex

Data as at:  
21 May 2022

	16+	50+	12-15	5-11
Dose 1	97.25% (20,053,853 doses / 20,619,959 people)	>99% (8,885,767 doses / 8,749,703 people)	84.70% (1,053,605 doses / 1,243,990 people)	52.73% (1,200,389 doses / 2,276,638 people)
Dose 2	95.64% (19,720,784 doses / 20,619,959 people)	>99% (8,779,242 doses / 8,749,703 people)	80.27% (998,496 doses / 1,243,990 people)	38.35% (872,987 doses / 2,276,638 people)

Age	Dose 1	Dose 2
95+	63,420 (>99%)	60,012 (>99%)
90-94	179,115 (>99%)	173,544 (>99%)
85-89	346,937 (>99%)	340,037 (>99%)
80-84	567,210 (>99%)	559,963 (>99%)
75-79	857,485 (>99%)	849,115 (>99%)
70-74	1,116,299 (>99%)	1,105,204 (>99%)
65-69	1,266,259 (>99%)	1,251,888 (>99%)
60-64	1,433,513 (>99%)	1,417,352 (98.7%)
55-59	1,475,715 (94.9%)	1,459,210 (93.8%)
50-54	1,579,814 (>99%)	1,562,917 (>99%)
45-49	1,551,357 (92.5%)	1,532,884 (91.4%)
40-44	1,620,376 (>99%)	1,596,438 (98.5%)
35-39	1,790,386 (97.6%)	1,758,448 (95.8%)
30-34	1,816,366 (94.4%)	1,774,813 (92.3%)
25-29	1,743,090 (91.4%)	1,695,728 (88.9%)
20-24	1,532,651 (89.5%)	1,493,230 (87.2%)
16-19	1,113,860 (93.1%)	1,090,001 (91.2%)
12-15	1,053,605 (84.7%)	998,496 (80.3%)



	AUS	ACT	NSW	NT	QLD	SA	TAS	VIC	WA
16 and over - dose 1	20,053,853	352,660	6,326,354	173,917	3,859,853	1,374,819	444,852	5,159,700	2,094,905
16 and over - dose 2	19,720,784	347,054	6,229,965	169,218	3,796,215	1,345,550	435,806	5,082,791	2,063,702
16 and over - population	20,619,959*	344,037	6,565,651	190,571	4,112,707	1,440,400	440,172	5,407,574	2,114,978
16 and over % with dose 1	97.25%	>99%	96.36%	91.26%	93.85%	95.45%	>99%	95.42%	>99%
16 and over % with dose 2	95.64%	>99%	94.89%	88.80%	92.30%	93.42%	>99%	93.99%	97.58%
5 to 11 - dose 1	1,200,389	31,912	358,190	13,242	208,390	84,132	28,638	326,535	141,498
5 to 11 - dose 2	872,987	26,783	265,137	8,364	146,179	61,411	22,777	238,878	98,922
5 to 11 - population	2,276,638	39,789	716,460	24,750	478,731	148,816	45,033	578,499	244,154
5 to 11 % with dose 1	52.73%	80.20%	49.99%	53.50%	43.53%	56.53%	63.59%	56.45%	57.95%
5 to 11 % with dose 2	38.35%	67.31%	37.01%	33.79%	30.53%	41.27%	50.58%	41.29%	40.52%
12 to 15 - dose 1	1,053,605	20,101	324,020	10,816	206,537	68,396	22,936	275,280	115,887
12 to 15 - dose 2	998,496	19,564	309,776	9,741	193,388	64,749	21,835	263,594	107,439
12 to 15 - population	1,243,990	19,693	390,330	13,060	270,146	82,747	26,308	308,611	132,869
12 to 15 % with dose 1	84.70%	>99%	83.01%	82.82%	76.45%	82.66%	87.18%	89.20%	87.22%
12 to 15 % with dose 2	80.27%	>99%	79.36%	74.59%	71.59%	78.25%	83.00%	85.41%	80.86%

\*National population will not equal sum of listed jurisdictions due to a small number of people counted in national population residing in some 'other' territories. Sum of state doses will not add to national total as some records are unable to be geocoded to a State or Territory. Doses sourced from Australian Immunisation Register, population from ABS ERP June 2020

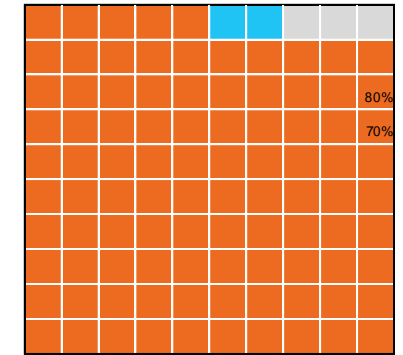
Data as at:  
21 May 2022

# Vaccinations by State – National Summary

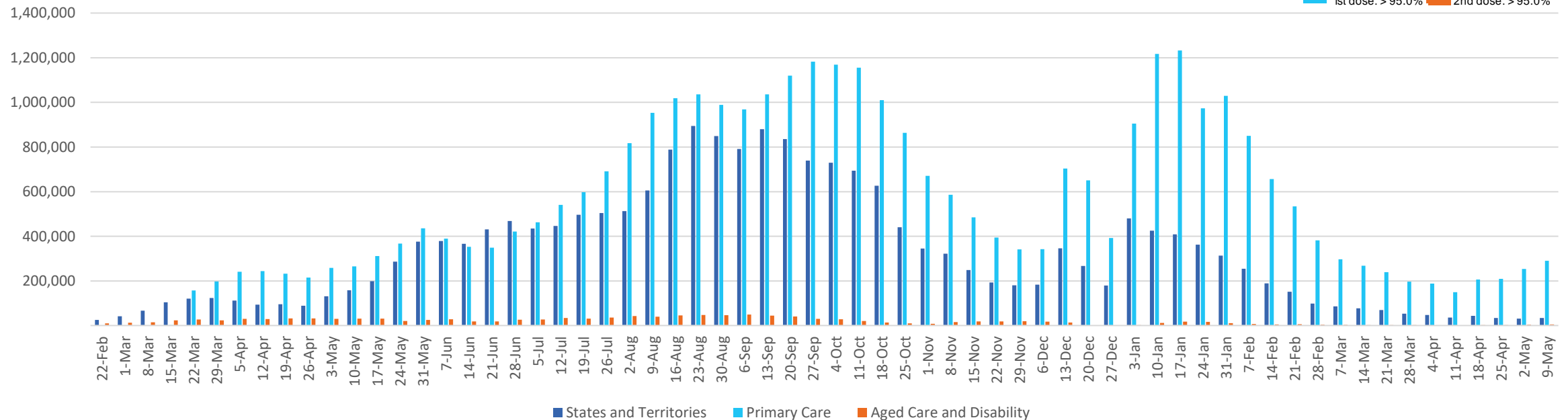
Past 7 days

	15/05/2022	16/05/2022	17/05/2022	18/05/2022	19/05/2022	20/05/2022	21/05/2022	7 day total
State and Territory	2,628	5,948	5,767	7,614	7,753	6,443	4,396	40,549
Aged Care and Disability	140	1,106	741	1,477	1,360	1,380	327	6,531
Primary Care	6,745	53,590	60,057	60,468	60,748	54,691	15,118	311,417
Total (rounded)	10 K	61 K	67 K	70 K	70 K	63 K	20 K	358 K

Eligible population by % coverage



## Doses administered by channel

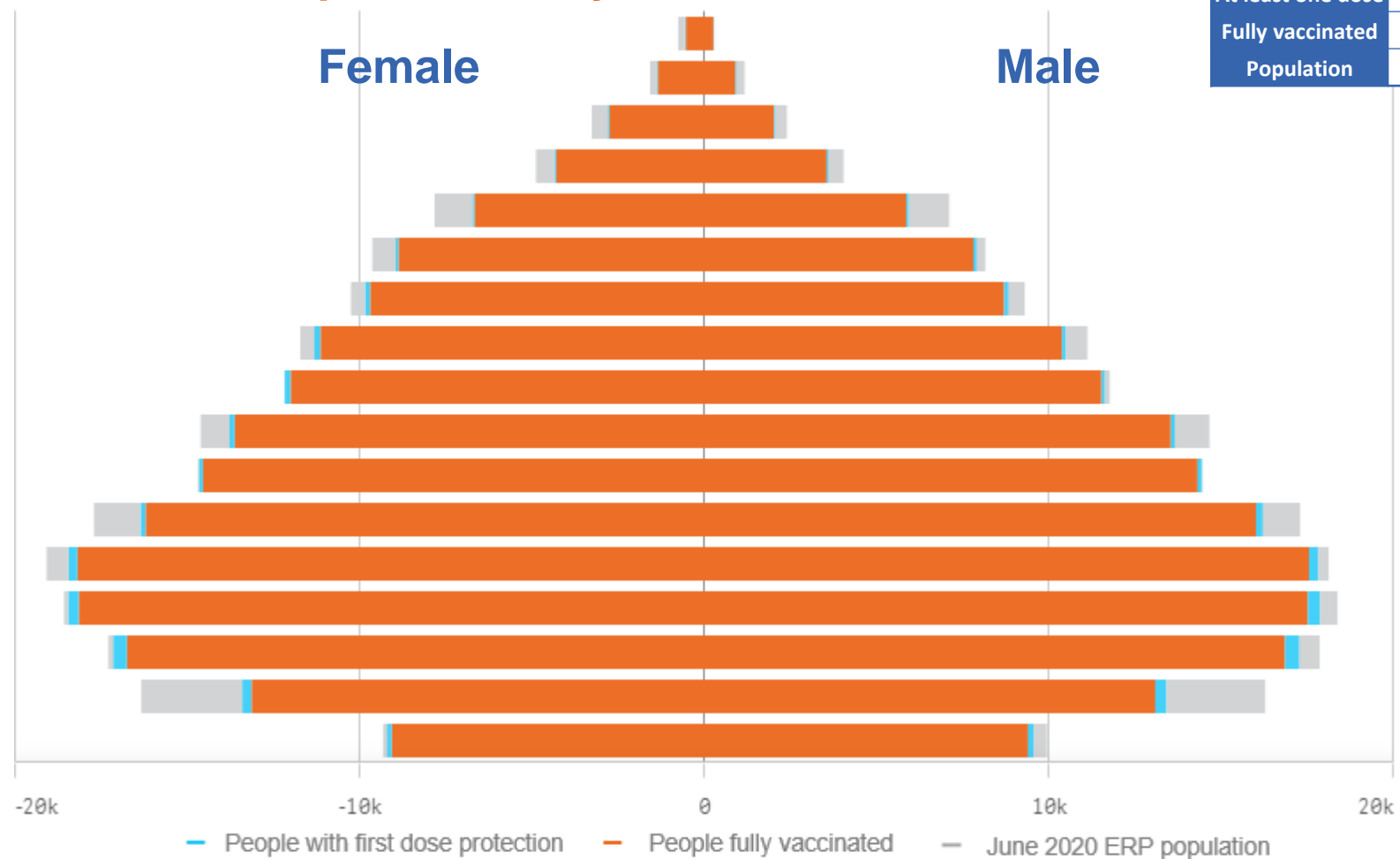


\*Administration state breakdown indicates state in which a vaccine was administered and may differ to residential state. Recent weeks may be understated.

Data as at:  
21 May 2022

# Vaccinations by State or Territory of residence

## Australian Capital Territory



	16+	50+	70+
At least one dose	>95% 352,660	>95% 137,543	>95% 45,621
Fully vaccinated	>95% 347,054	>95% 135,727	>95% 44,984
Population	344,037	127,802	39,946

Age	At least one dose	Fully vaccinated
95+	>95%	>95%
90-94	>95%	>95%
85-89	>95%	>95%
80-84	>95%	>95%
75-79	>95%	>95%
70-74	>95%	>95%
65-69	>95%	>95%
60-64	>95%	>95%
55-59	>95%	>95%
50-54	>95%	>95%
45-49	>95%	>95%
40-44	>95%	>95%
35-39	>95%	>95%
30-34	>95%	>95%
25-29	>95%	>95%
20-24	82.77%	80.74%
16-19	>95%	>95%

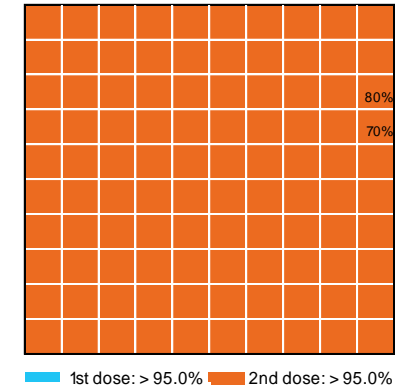
# Vaccinations by State – Australian Capital Territory

Data as at:  
21 May 2022

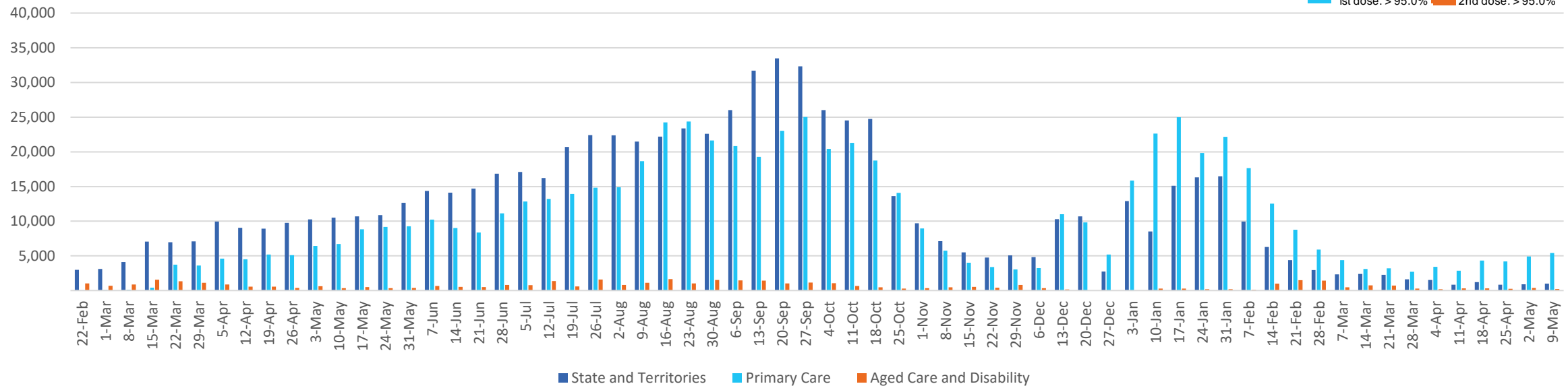
Past 7 days

	15/05/2022	16/05/2022	17/05/2022	18/05/2022	19/05/2022	20/05/2022	21/05/2022	7 day total
State and Territory	47	930	738	710	819	753	347	4,344
Aged Care and Disability	<10	<10	<10	38	24	21	15	<10**
Primary Care	55	1,445	1,321	1,060	1,123	946	298	6,248
Total (rounded)	0 K	2 K	2 K	2 K	2 K	2 K	1 K	10 K

Eligible population by % coverage



## Doses administered by channel



\*Administration state breakdown indicates state in which a vaccine was administered and may differ to residential state. Recent weeks may be understated.

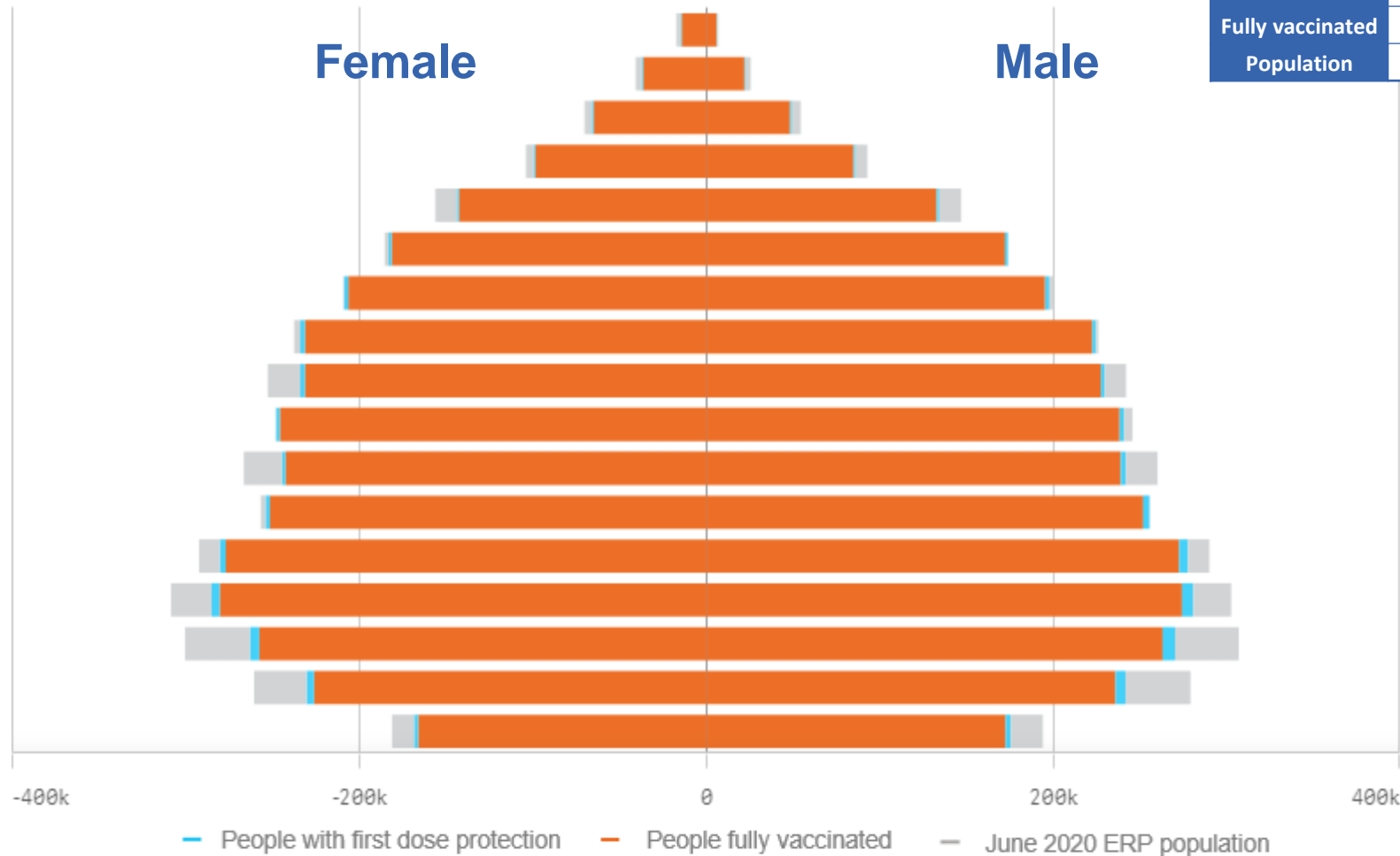
\*\*Total appears lower due to historic changes.

Data as at:  
21 May 2022

# Vaccinations by State or Territory of residence

## New South Wales

	16+	50+	70+
At least one dose	>95% 6,326,354	>95% 2,841,697	>95% 1,019,587
Fully vaccinated	94.89% 6,229,965	>95% 2,808,228	>95% 1,006,289
Population	6,565,651	2,807,793	962,606



Age	At least one dose	Fully vaccinated
95+	>95%	>95%
90-94	>95%	>95%
85-89	>95%	>95%
80-84	>95%	>95%
75-79	>95%	>95%
70-74	>95%	>95%
65-69	>95%	>95%
60-64	>95%	>95%
55-59	93.89%	92.84%
50-54	>95%	>95%
45-49	92.50%	91.51%
40-44	>95%	>95%
35-39	>95%	94.59%
30-34	93.09%	91.12%
25-29	88.37%	86.12%
20-24	87.85%	85.84%
16-19	91.76%	90.31%

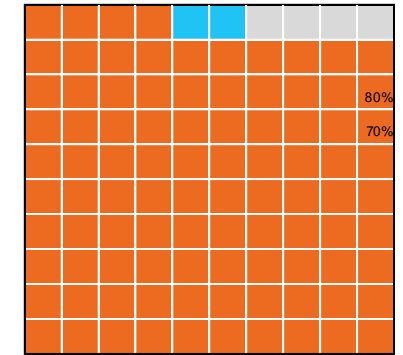
# Vaccinations by State – New South Wales

Data as at:  
21 May 2022

Past 7 days

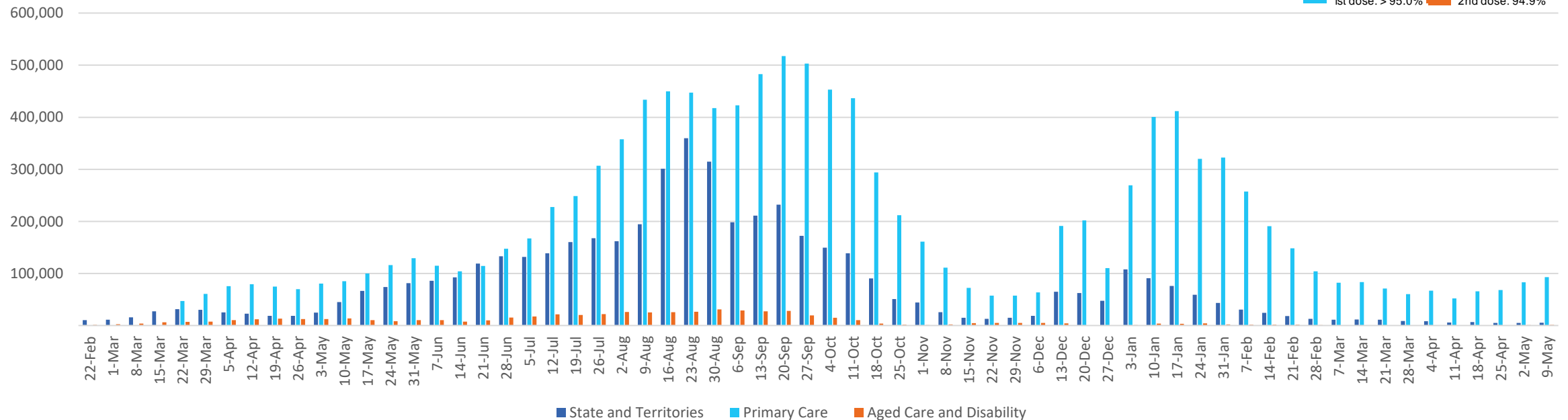
	15/05/2022	16/05/2022	17/05/2022	18/05/2022	19/05/2022	20/05/2022	21/05/2022	7 day total
State and Territory	1,076	713	226	1,127	1,551	1,077	953	6,723
Aged Care and Disability	<10	445	387	487	268	503	44	2,135
Primary Care	1,951	17,247	19,190	19,544	19,626	17,493	5,109	100,160
Total (rounded)	3 K	18 K	20 K	21 K	21 K	19 K	6 K	109 K

Eligible population by % coverage



1st dose: > 95.0% 2nd dose: 94.9%

## Doses administered by channel

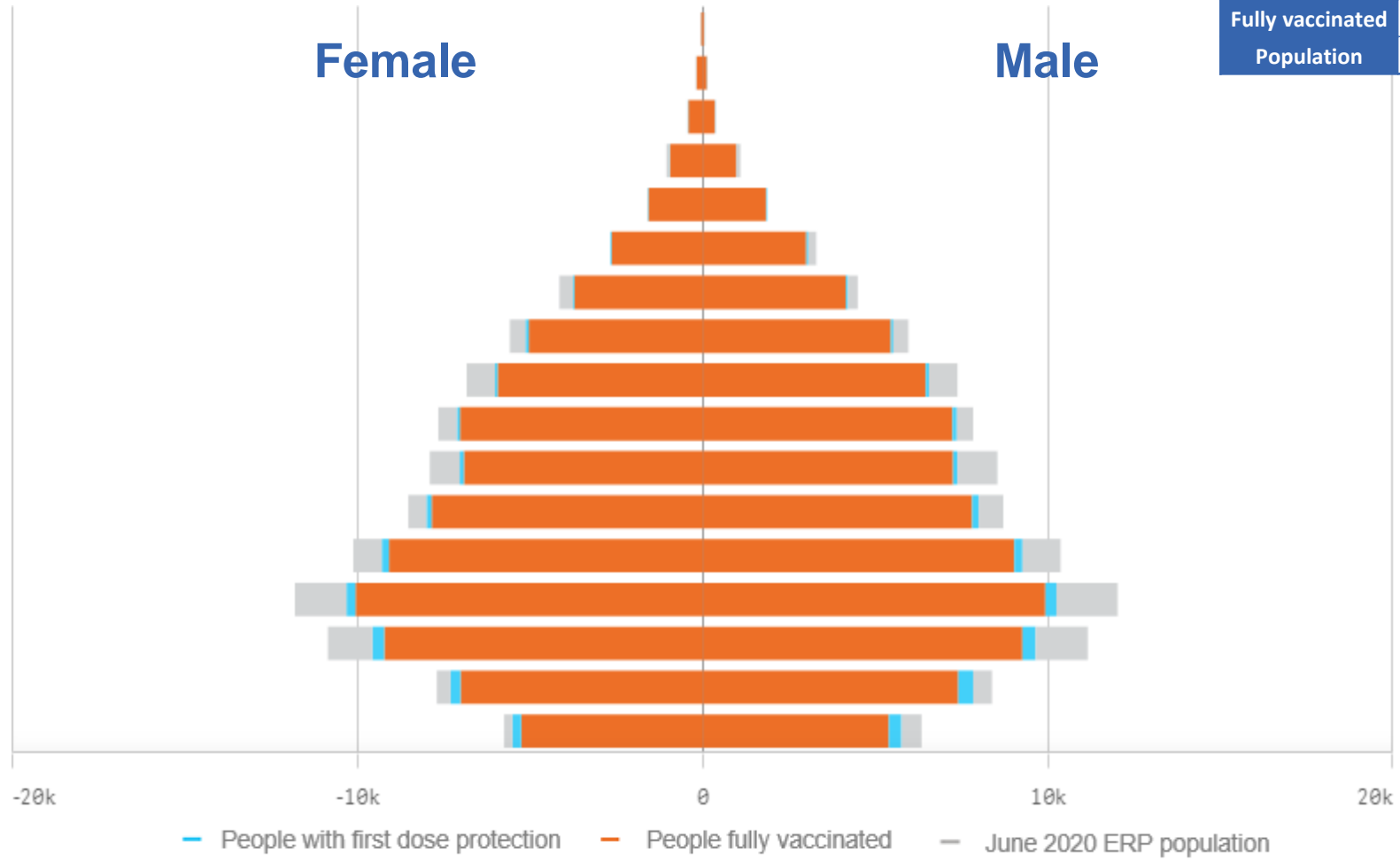


\*Administration state breakdown indicates state in which a vaccine was administered and may differ to residential state. Recent weeks may be understated.

Data as at:  
21 May 2022

# Vaccinations by State or Territory of residence

## Northern Territory



	16+		50+		70+	
At least one dose	91.26%	173,917	93.33%	58,128	>95%	12,344
Fully vaccinated	88.80%	169,218	91.91%	57,241	>95%	12,125
Population	190,571		62,280		12,343	

Age	At least one dose	Fully vaccinated
95+	>95%	91.75%
90-94	>95%	93.19%
85-89	>95%	>95%
80-84	>95%	>95%
75-79	>95%	>95%
70-74	>95%	94.70%
65-69	92.36%	91.15%
60-64	92.41%	90.95%
55-59	88.49%	87.31%
50-54	93.70%	92.23%
45-49	87.91%	86.30%
40-44	93.14%	91.08%
35-39	90.91%	88.67%
30-34	86.92%	84.35%
25-29	88.00%	84.55%
20-24	94.46%	89.93%
16-19	93.31%	88.10%



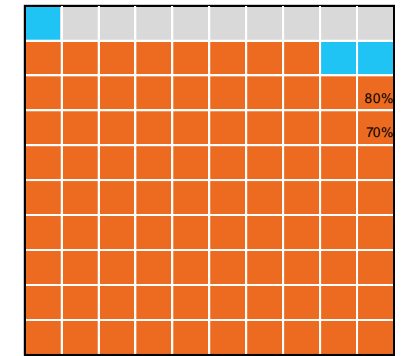
# Vaccinations by State – Northern Territory

Data as at:  
21 May 2022

Past 7 days

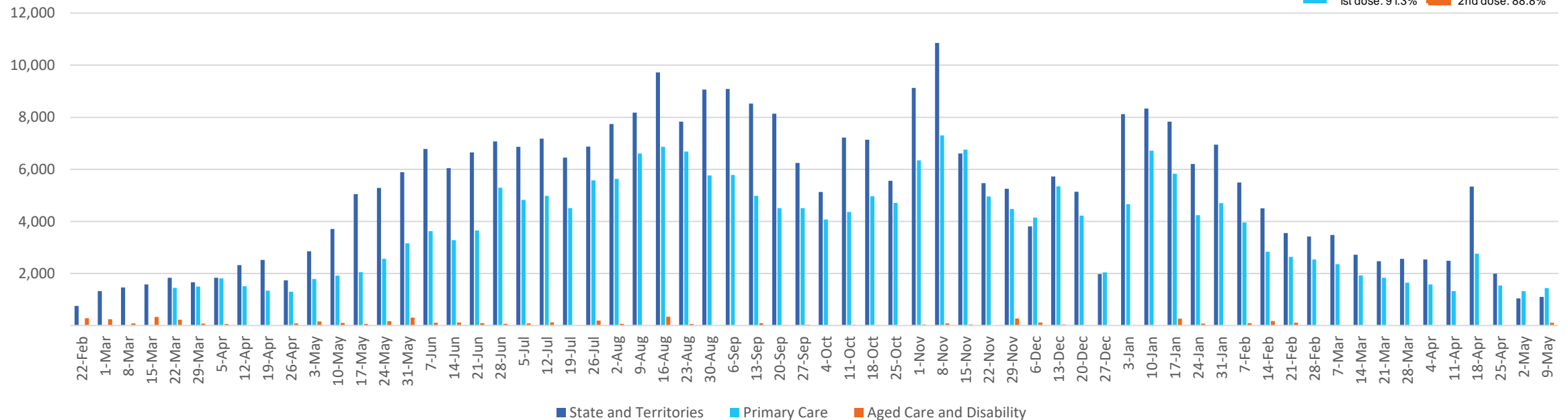
	15/05/2022	16/05/2022	17/05/2022	18/05/2022	19/05/2022	20/05/2022	21/05/2022	7 day total
State and Territory	<10	243	189	189	247	173	73	1,118
Aged Care and Disability	<10	19	<10	<10	<10	<10	<10	20
Primary Care	<10	186	299	334	366	233	70	1,490
Total (rounded)	0 K	0 K	0 K	1 K	1 K	0 K	0 K	3 K

Eligible population by % coverage



1st dose: 91.3% 2nd dose: 88.8%

## Doses administered by channel

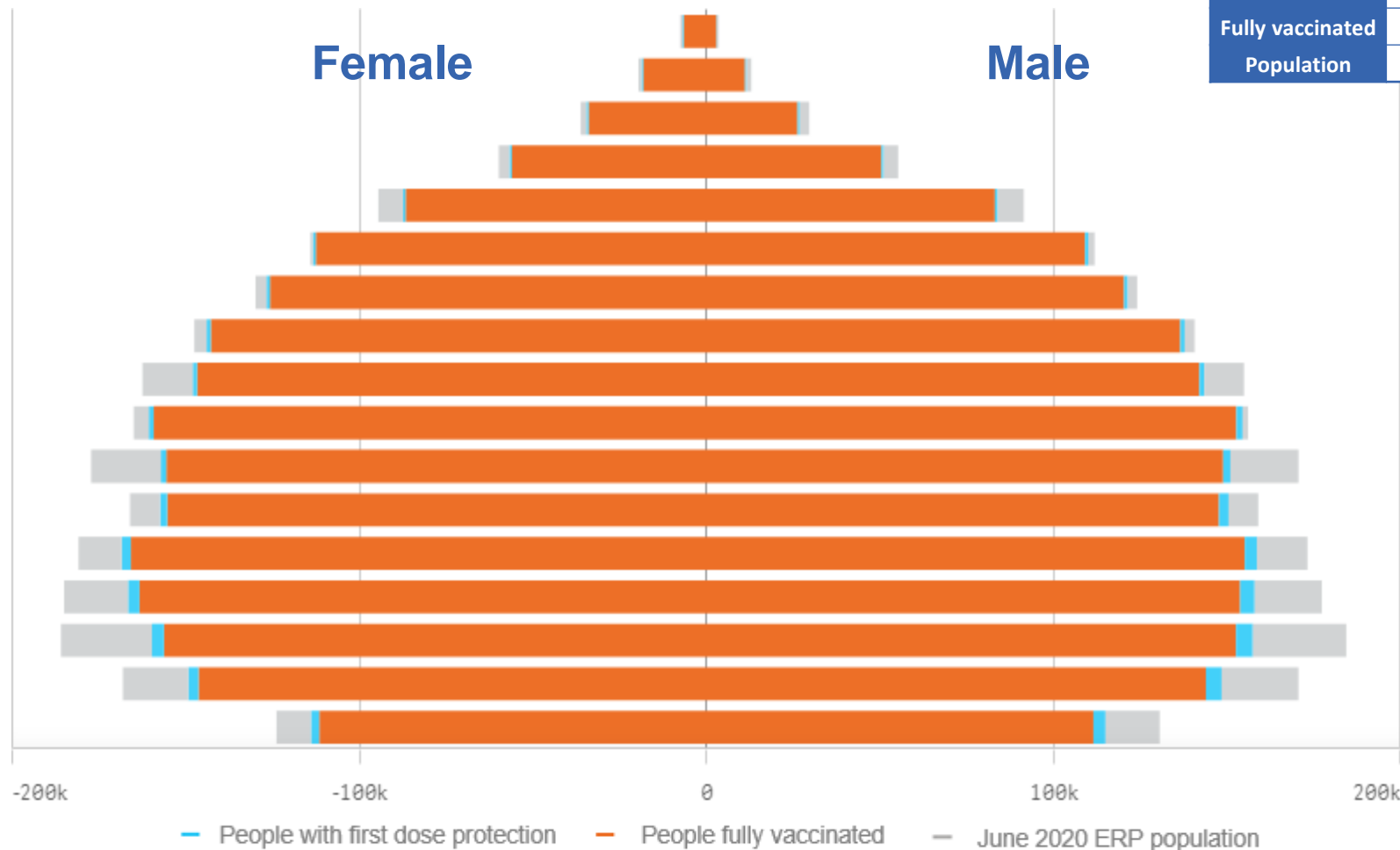


\*Administration state breakdown indicates state in which a vaccine was administered and may differ to residential state. Recent weeks may be understated.

Data as at:  
21 May 2022

# Vaccinations by State or Territory of residence

## Queensland



	16+	50+	70+
At least one dose	93.85% 3,859,853	>95% 1,742,796	>95% 604,970
Fully vaccinated	92.30% 3,796,215	>95% 1,724,575	>95% 597,509
Population	4,112,707	1,758,855	577,767

Age	At least one dose	Fully vaccinated
95+	>95%	>95%
90-94	>95%	>95%
85-89	>95%	>95%
80-84	>95%	>95%
75-79	>95%	>95%
70-74	>95%	>95%
65-69	>95%	>95%
60-64	>95%	>95%
55-59	91.90%	91.03%
50-54	>95%	>95%
45-49	88.65%	87.57%
40-44	94.81%	93.29%
35-39	92.56%	90.75%
30-34	89.88%	87.72%
25-29	86.03%	83.66%
20-24	88.13%	85.84%
16-19	90.03%	87.68%

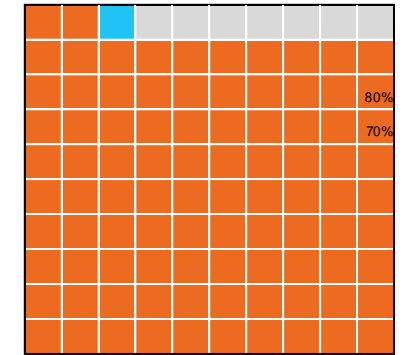
# Vaccinations by State – Queensland

Data as at:  
21 May 2022

Past 7 days

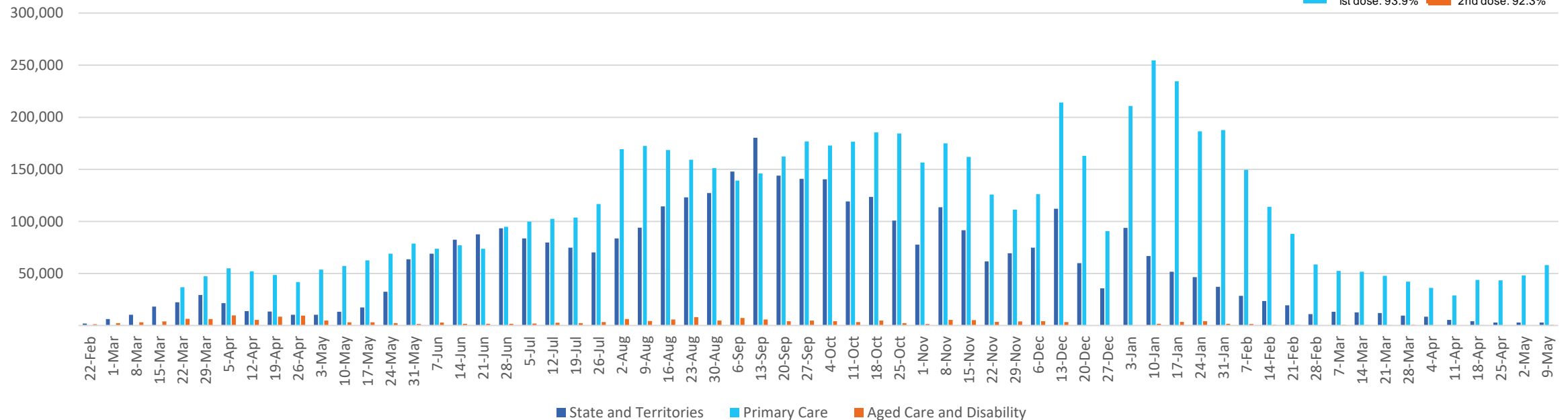
	15/05/2022	16/05/2022	17/05/2022	18/05/2022	19/05/2022	20/05/2022	21/05/2022	7 day total
State and Territory	43	272	709	820	626	666	342	3,478
Aged Care and Disability	37	148	132	251	414	277	43	1,302
Primary Care	1,520	10,056	12,248	11,826	12,675	11,085	1,972	61,382
Total (rounded)	2 K	10 K	13 K	13 K	14 K	12 K	2 K	66 K

Eligible population by % coverage



1st dose: 93.9% 2nd dose: 92.3%

## Doses administered by channel

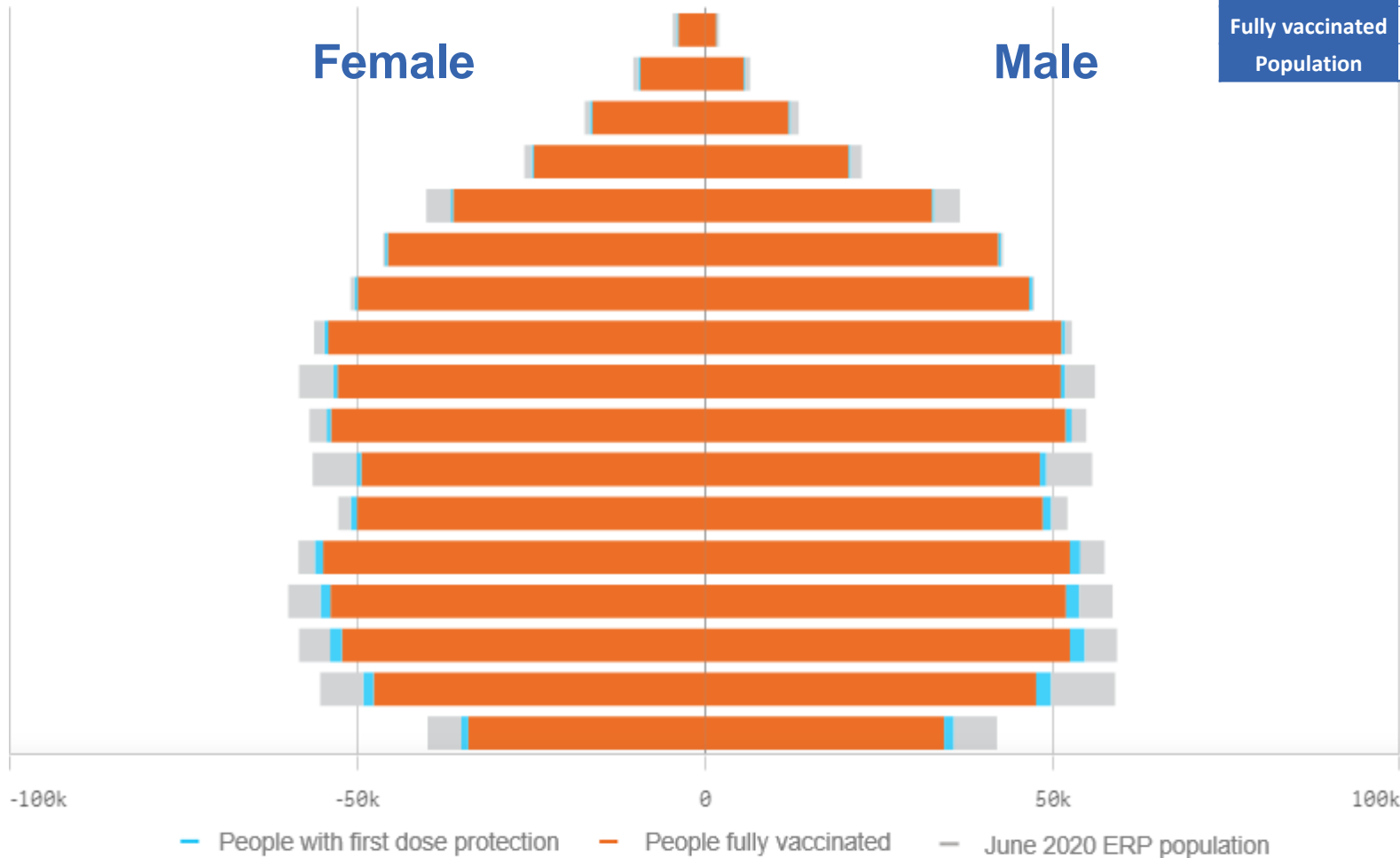


\*Administration state breakdown indicates state in which a vaccine was administered and may differ to residential state. Recent weeks may be understated.

Data as at:  
21 May 2022

# Vaccinations by State or Territory of residence

## South Australia



	16+		50+		70+	
At least one dose	>95%	1,374,819	>95%	672,239	>95%	254,732
Fully vaccinated	93.42%	1,345,550	>95%	663,706	>95%	251,141
Population	1,440,400		674,384		240,514	

Age	At least one dose	Fully vaccinated
95+	>95%	>95%
90-94	>95%	>95%
85-89	>95%	>95%
80-84	>95%	>95%
75-79	>95%	>95%
70-74	>95%	>95%
65-69	>95%	>95%
60-64	>95%	>95%
55-59	92.11%	90.98%
50-54	>95%	94.67%
45-49	88.60%	87.14%
40-44	>95%	94.23%
35-39	>95%	92.97%
30-34	92.87%	89.87%
25-29	93.50%	89.96%
20-24	87.41%	84.01%
16-19	86.71%	83.67%

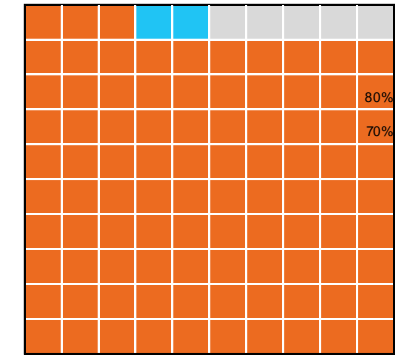
# Vaccinations by State – South Australia

Data as at: 21 May 2022

Past 7 days

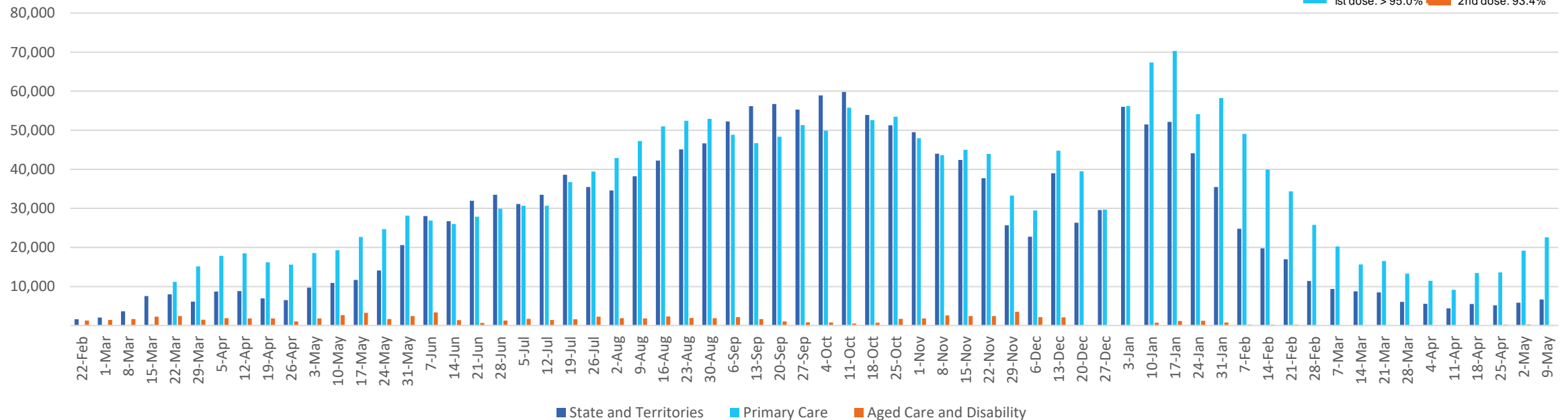
	15/05/2022	16/05/2022	17/05/2022	18/05/2022	19/05/2022	20/05/2022	21/05/2022	7 day total
State and Territory	412	971	809	1,311	1,259	1,007	644	6,413
Aged Care and Disability	<10	<10	14	<10	72	<10	19	108
Primary Care	447	4,568	4,347	5,007	4,047	4,225	958	23,599
Total (rounded)	1 K	6 K	5 K	6 K	5 K	5 K	2 K	30 K

Eligible population by % coverage



1st dose: > 95.0% 2nd dose: 93.4%

## Doses administered by channel

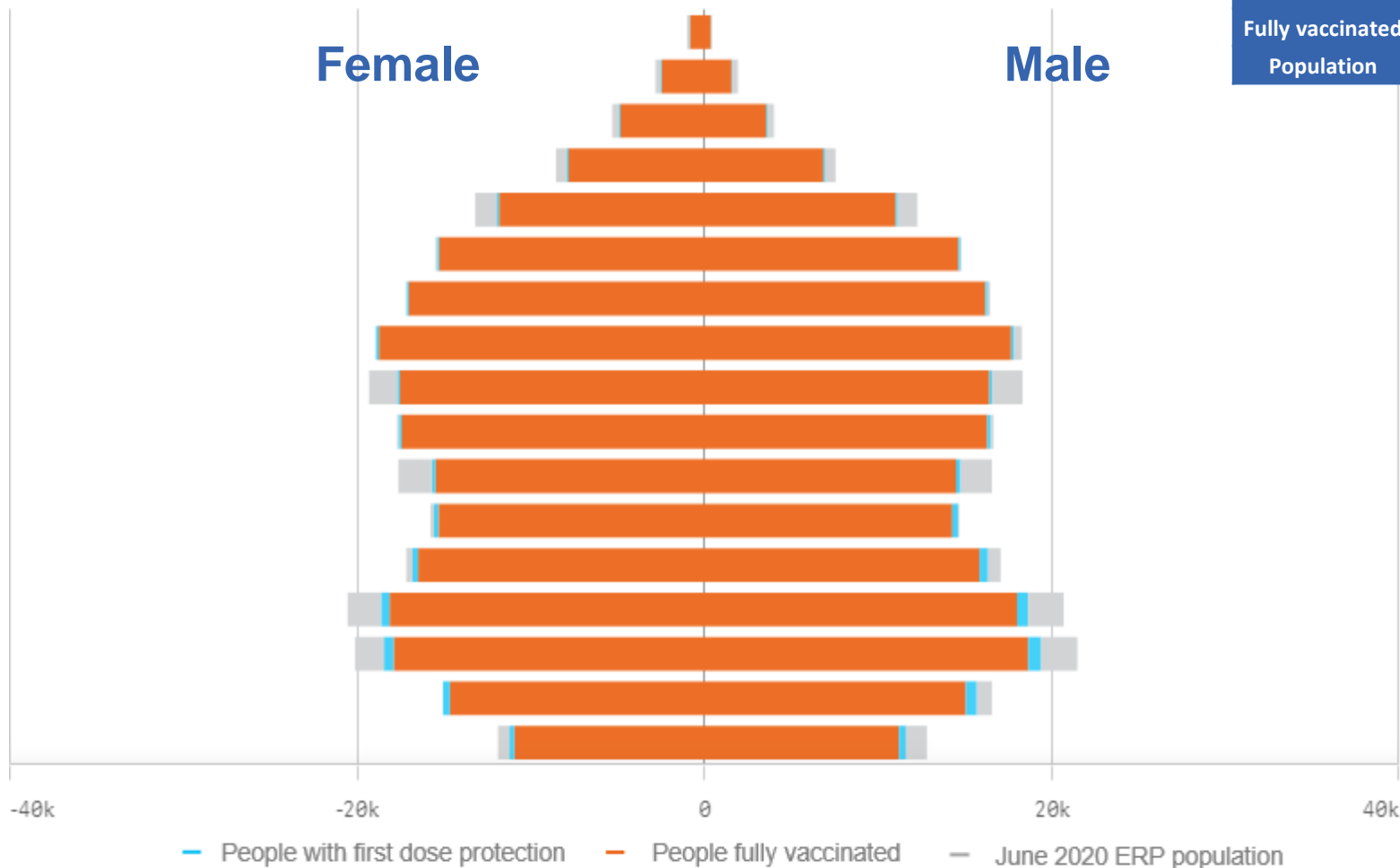


\*Administration state breakdown indicates state in which a vaccine was administered and may differ to residential state. Recent weeks may be understated.

Data as at:  
21 May 2022

# Vaccinations by State or Territory of residence

## Tasmania



	16+		50+		70+	
At least one dose	>95%	444,852	>95%	221,122	>95%	82,293
Fully vaccinated	>95%	435,806	>95%	218,673	>95%	81,197
Population	440,172		220,036		77,155	

Age	At least one dose	Fully vaccinated
95+	>95%	>95%
90-94	>95%	>95%
85-89	>95%	>95%
80-84	>95%	>95%
75-79	>95%	>95%
70-74	>95%	>95%
65-69	>95%	>95%
60-64	>95%	>95%
55-59	91.18%	90.28%
50-54	>95%	>95%
45-49	89.26%	87.80%
40-44	>95%	>95%
35-39	>95%	>95%
30-34	>95%	>95%
25-29	>95%	>95%
20-24	>95%	94.17%
16-19	92.46%	89.75%

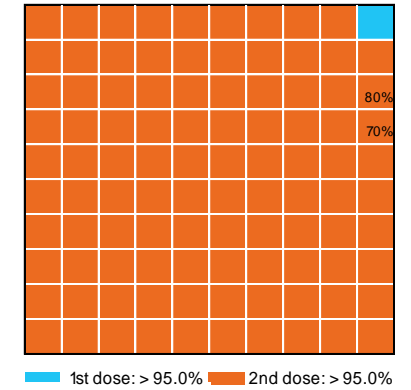
# Vaccinations by State – Tasmania

Data as at:  
21 May 2022

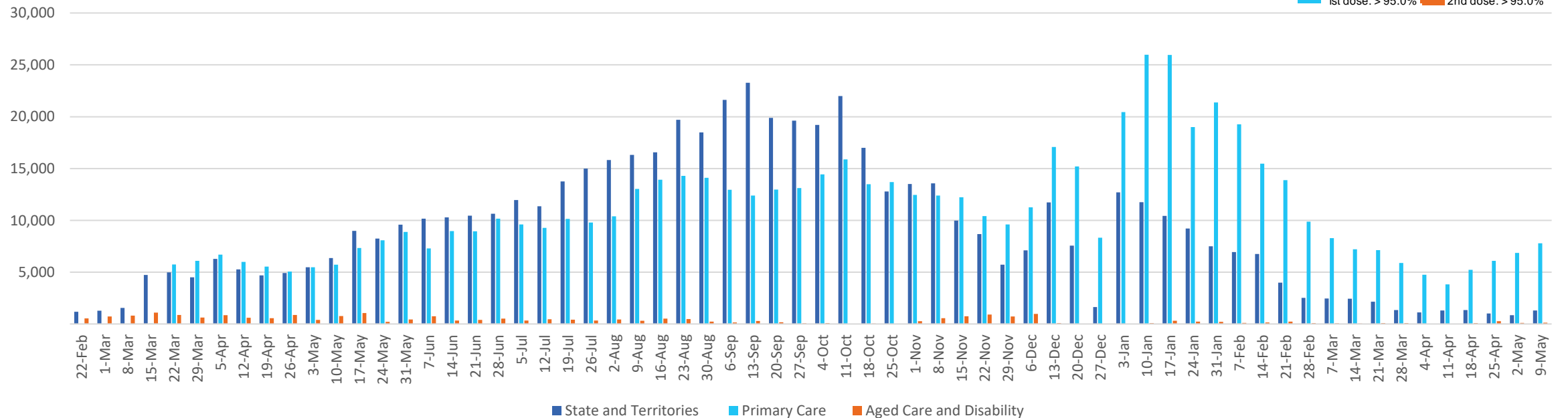
Past 7 days

	15/05/2022	16/05/2022	17/05/2022	18/05/2022	19/05/2022	20/05/2022	21/05/2022	7 day total
State and Territory	141	66	266	276	120	134	97	1,100
Aged Care and Disability	<10	<10	<10	36	29	24	<10	97
Primary Care	49	1,644	1,535	1,591	1,615	1,434	778	8,646
Total (rounded)	0 K	2 K	2 K	2 K	2 K	2 K	1 K	10 K

Eligible population by % coverage



## Doses administered by channel



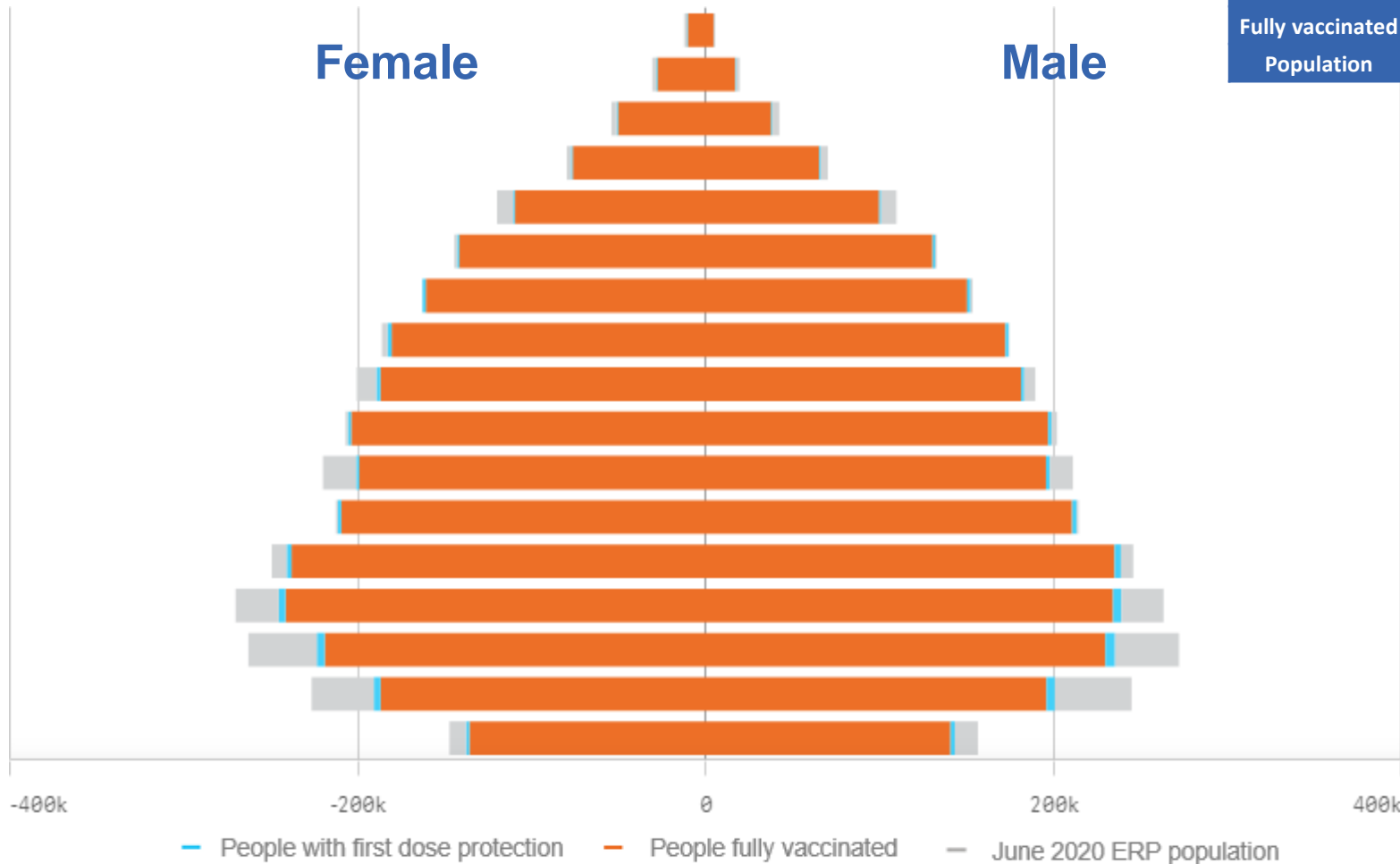
\*Administration state breakdown indicates state in which a vaccine was administered and may differ to residential state. Recent weeks may be understated.

Data as at:  
21 May 2022

# Vaccinations by State or Territory of residence

## Victoria

	16+	50+	70+
At least one dose	>95% 5,159,700	>95% 2,233,617	>95% 782,515
Fully vaccinated	93.99% 5,082,791	>95% 2,206,069	>95% 771,972
Population	5,407,574	2,211,211	743,519



Age	At least one dose	Fully vaccinated
95+	>95%	>95%
90-94	>95%	>95%
85-89	>95%	>95%
80-84	>95%	>95%
75-79	>95%	>95%
70-74	>95%	>95%
65-69	>95%	>95%
60-64	>95%	>95%
55-59	>95%	94.44%
50-54	>95%	>95%
45-49	92.57%	91.62%
40-44	>95%	>95%
35-39	>95%	>95%
30-34	91.04%	89.32%
25-29	86.09%	84.10%
20-24	83.27%	81.36%
16-19	92.57%	91.07%



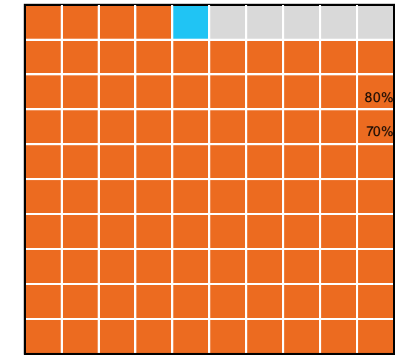
# Vaccinations by State – Victoria

Data as at:  
21 May 2022

Past 7 days

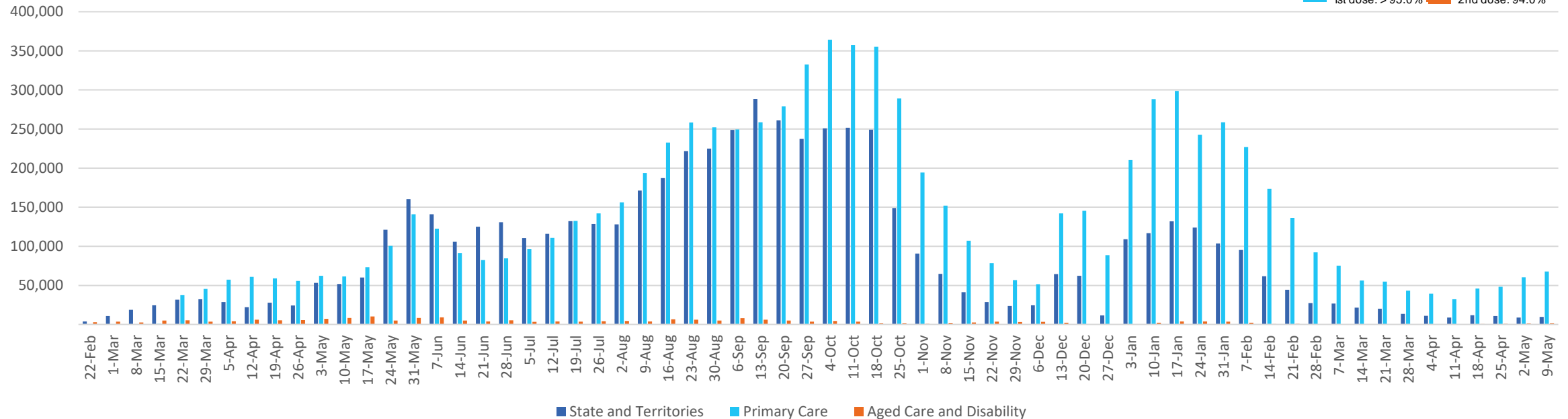
	15/05/2022	16/05/2022	17/05/2022	18/05/2022	19/05/2022	20/05/2022	21/05/2022	7 day total
State and Territory	488	1,694	1,886	1,871	1,955	1,676	1,327	10,897
Aged Care and Disability	99	379	334	505	487	533	190	2,527
Primary Care	1,852	12,542	14,617	14,663	14,692	13,503	3,801	75,670
Total (rounded)	2 K	15 K	17 K	17 K	17 K	16 K	5 K	89 K

Eligible population by % coverage



1st dose: > 95.0% 2nd dose: 94.0%

## Doses administered by channel

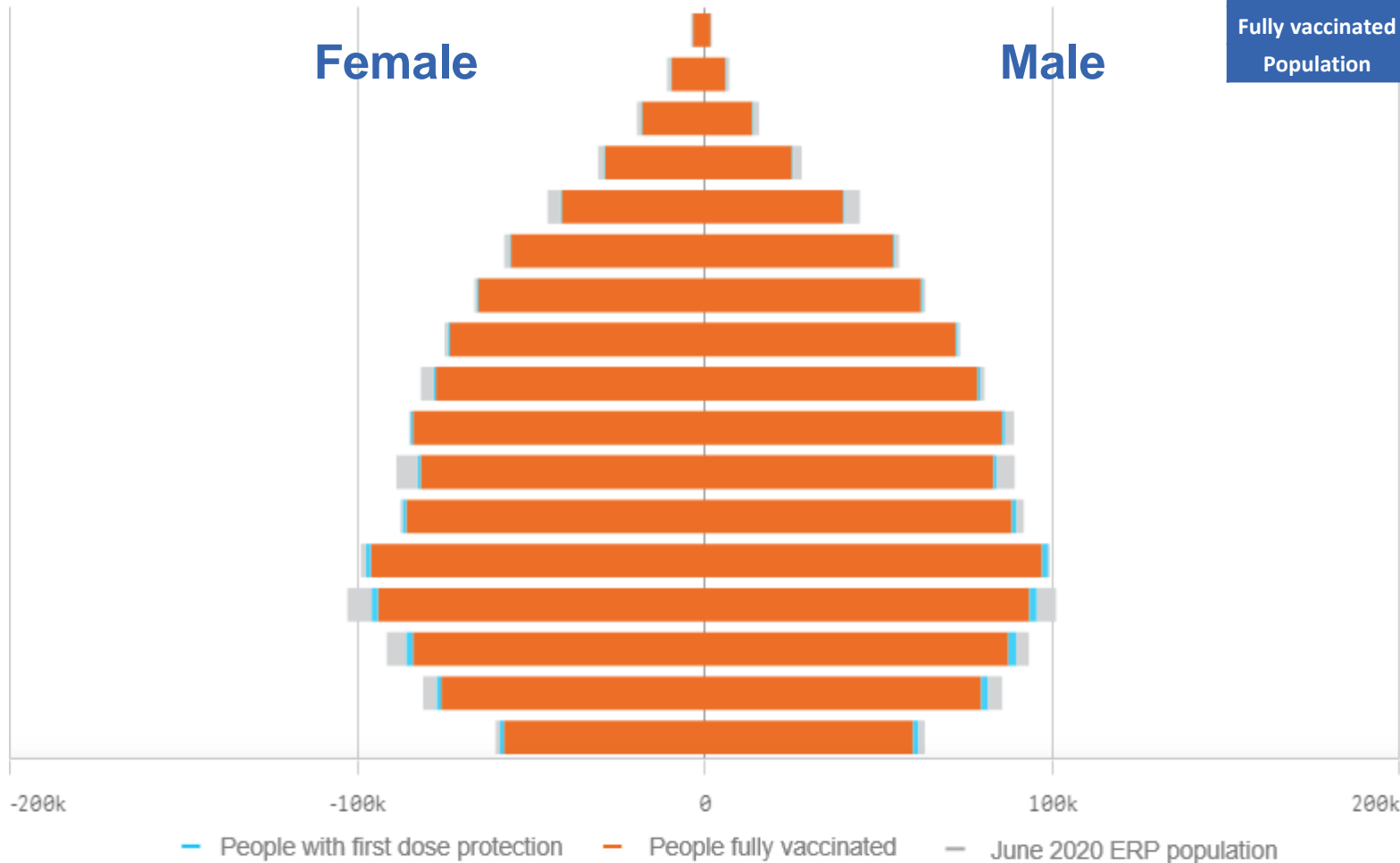


\*Administration state breakdown indicates state in which a vaccine was administered and may differ to residential state. Recent weeks may be understated.

Data as at:  
21 May 2022

# Vaccinations by State or Territory of residence

## Western Australia



	16+		50+		70+	
At least one dose	>95%	2,094,905	>95%	905,544	>95%	301,001
Fully vaccinated	>95%	2,063,702	>95%	896,694	>95%	297,462
Population	2,114,978		885,370		280,281	

Age	At least one dose	Fully vaccinated
95+	>95%	>95%
90-94	>95%	>95%
85-89	>95%	>95%
80-84	>95%	>95%
75-79	>95%	>95%
70-74	>95%	>95%
65-69	>95%	>95%
60-64	>95%	>95%
55-59	>95%	>95%
50-54	>95%	>95%
45-49	93.77%	92.72%
40-44	>95%	>95%
35-39	>95%	>95%
30-34	94.22%	92.21%
25-29	>95%	93.05%
20-24	>95%	93.47%
16-19	>95%	>95%

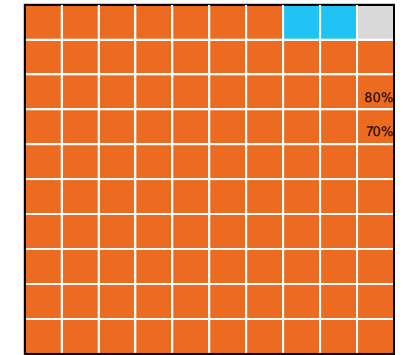
# Vaccinations by State – Western Australia

Data as at:  
21 May 2022

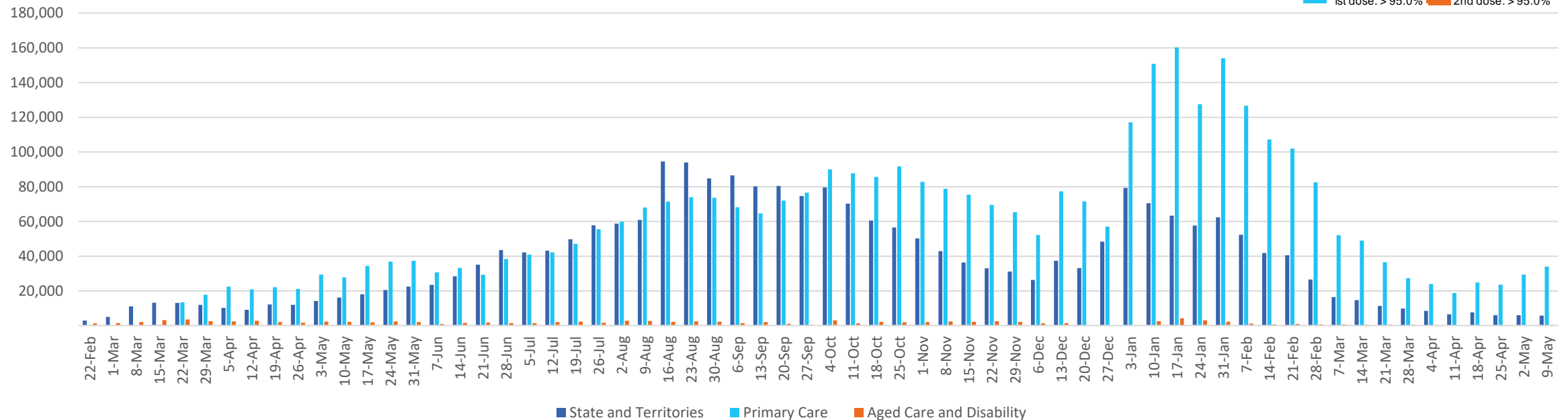
Past 7 days

	15/05/2022	16/05/2022	17/05/2022	18/05/2022	19/05/2022	20/05/2022	21/05/2022	7 day total
State and Territory	417	1,059	944	1,310	1,176	957	613	6,476
Aged Care and Disability	<10	106	128	158	66	21	<10	490
Primary Care	869	5,902	6,500	6,443	6,604	5,772	2,132	34,222
Total (rounded)	1 K	7 K	8 K	8 K	8 K	7 K	3 K	41 K

Eligible population by % coverage



## Doses administered by channel



\*Administration state breakdown indicates state in which a vaccine was administered and may differ to residential state. Recent weeks may be understated.