



Australian Government
Operation COVID Shield

COVID-19 Vaccine Roll-out Jurisdictional Breakdowns

20 May 2022

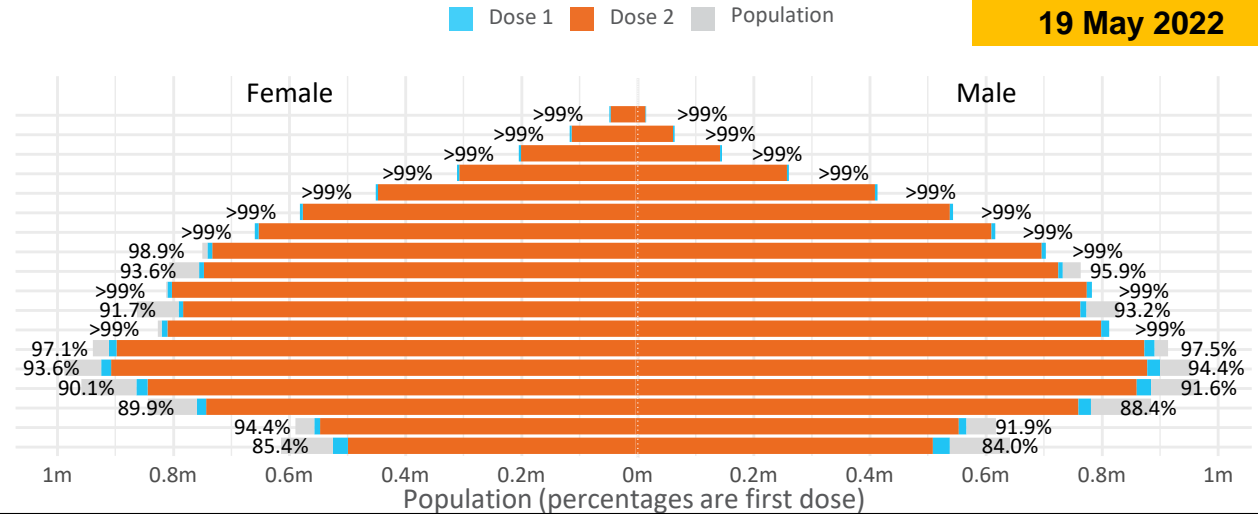
Doses by age and sex

First and second doses by age and sex

	16+	50+	12-15	5-11
Dose 1	97.24% (20,051,054 doses / 20,619,959 people)	>99% (8,883,678 doses / 8,749,703 people)	84.70% (1,053,686 doses / 1,243,990 people)	52.73% (1,200,533 doses / 2,276,638 people)
Dose 2	95.63% (19,718,182 doses / 20,619,959 people)	>99% (8,777,202 doses / 8,749,703 people)	80.28% (998,614 doses / 1,243,990 people)	38.21% (869,944 doses / 2,276,638 people)

Data as at: 19 May 2022

Age	Dose 1	Dose 2
95+	63,282 (>99%)	59,875 (>99%)
90-94	178,947 (>99%)	173,375 (>99%)
85-89	346,725 (>99%)	339,817 (>99%)
80-84	566,958 (>99%)	559,710 (>99%)
75-79	857,070 (>99%)	848,713 (>99%)
70-74	1,116,053 (>99%)	1,104,951 (>99%)
65-69	1,266,024 (>99%)	1,251,679 (>99%)
60-64	1,433,295 (>99%)	1,417,132 (98.6%)
55-59	1,475,804 (94.9%)	1,459,317 (93.8%)
50-54	1,579,520 (>99%)	1,562,633 (>99%)
45-49	1,551,551 (92.5%)	1,533,082 (91.4%)
40-44	1,619,900 (>99%)	1,595,946 (98.5%)
35-39	1,789,925 (97.5%)	1,758,027 (95.8%)
30-34	1,816,235 (94.4%)	1,774,743 (92.3%)
25-29	1,742,977 (91.4%)	1,695,613 (88.9%)
20-24	1,532,683 (89.5%)	1,493,321 (87.2%)
16-19	1,114,105 (93.2%)	1,090,248 (91.2%)
12-15	1,053,686 (84.7%)	998,614 (80.3%)



	AUS	ACT	NSW	NT	QLD	SA	TAS	VIC	WA
16 and over - dose 1	20,051,054	352,617	6,325,943	173,974	3,859,731	1,374,846	444,893	5,159,335	2,094,880
16 and over - dose 2	19,718,182	347,019	6,229,645	169,281	3,796,057	1,345,587	435,842	5,082,523	2,063,672
16 and over - population	20,619,959*	344,037	6,565,651	190,571	4,112,707	1,440,400	440,172	5,407,574	2,114,978
16 and over % with dose 1	97.24%	>99%	96.35%	91.29%	93.85%	95.45%	>99%	95.41%	>99%
16 and over % with dose 2	95.63%	>99%	94.88%	88.83%	92.30%	93.42%	>99%	93.99%	97.57%
5 to 11 - dose 1	1,200,533	31,915	358,242	13,249	208,474	84,153	28,652	326,547	141,524
5 to 11 - dose 2	869,944	26,723	264,033	8,335	145,873	61,242	22,762	238,037	98,462
5 to 11 - population	2,276,638	39,789	716,460	24,750	478,731	148,816	45,033	578,499	244,154
5 to 11 % with dose 1	52.73%	80.21%	50.00%	53.53%	43.55%	56.55%	63.62%	56.45%	57.97%
5 to 11 % with dose 2	38.21%	67.16%	36.85%	33.68%	30.47%	41.15%	50.55%	41.15%	40.33%
12 to 15 - dose 1	1,053,686	20,108	324,085	10,833	206,629	68,427	22,932	275,285	115,887
12 to 15 - dose 2	998,614	19,573	309,859	9,753	193,489	64,788	21,829	263,584	107,437
12 to 15 - population	1,243,990	19,693	390,330	13,060	270,146	82,747	26,308	308,611	132,869
12 to 15 % with dose 1	84.70%	>99%	83.03%	82.95%	76.49%	82.69%	87.17%	89.20%	87.22%
12 to 15 % with dose 2	80.28%	>99%	79.38%	74.68%	71.62%	78.30%	82.97%	85.41%	80.86%

*National population will not equal sum of listed jurisdictions due to a small number of people counted in national population residing in some 'other' territories. Sum of state doses will not add to national total as some records are unable to be geocoded to a State or Territory. Doses sourced from Australian Immunisation Register, population from ABS ERP June 2020

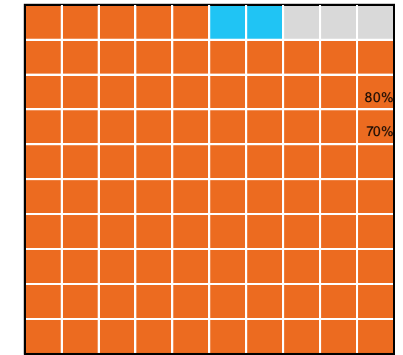
Vaccinations by State – National Summary

Data as at: 19 May 2022

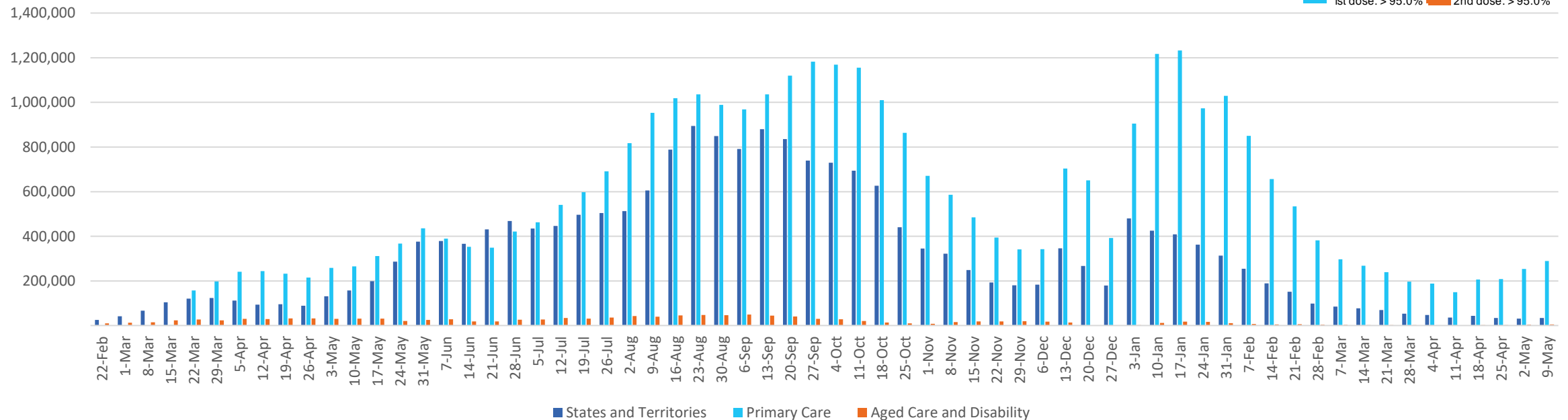
Past 7 days

	13/05/2022	14/05/2022	15/05/2022	16/05/2022	17/05/2022	18/05/2022	19/05/2022	7 day total
State and Territory	7,736	4,140	2,628	5,948	5,767	7,614	7,753	41,586
Aged Care and Disability	1,034	187	140	1,106	741	1,477	1,360	6,045
Primary Care	53,182	16,429	6,745	53,590	60,057	60,468	60,748	311,219
Total (rounded)	62 K	21 K	10 K	61 K	67 K	70 K	70 K	359 K

Eligible population by % coverage



Doses administered by channel



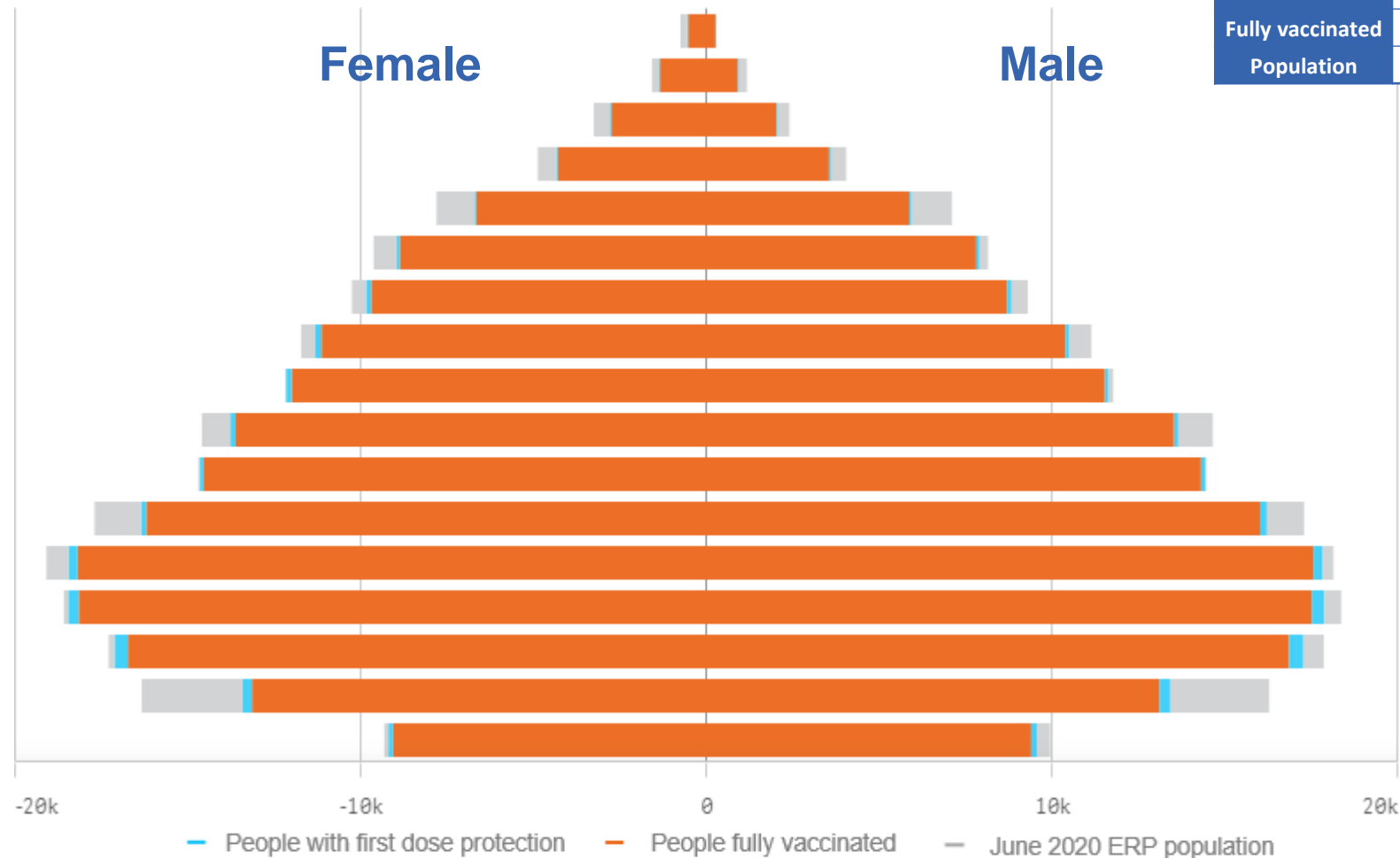
■ 1st dose: > 95.0% ■ 2nd dose: > 95.0%

*Administration state breakdown indicates state in which a vaccine was administered and may differ to residential state. Recent weeks may be understated.

Data as at:
19 May 2022

Vaccinations by State or Territory of residence

Australian Capital Territory



	16+	50+	70+
At least one dose	>95% 352,617	>95% 137,495	>95% 45,596
Fully vaccinated	>95% 347,019	>95% 135,681	>95% 44,956
Population	344,037	127,802	39,946

Age	At least one dose	Fully vaccinated
95+	>95%	>95%
90-94	>95%	>95%
85-89	>95%	>95%
80-84	>95%	>95%
75-79	>95%	>95%
70-74	>95%	>95%
65-69	>95%	>95%
60-64	>95%	>95%
55-59	>95%	>95%
50-54	>95%	>95%
45-49	>95%	>95%
40-44	>95%	>95%
35-39	>95%	>95%
30-34	>95%	>95%
25-29	>95%	>95%
20-24	82.84%	80.81%
16-19	>95%	>95%

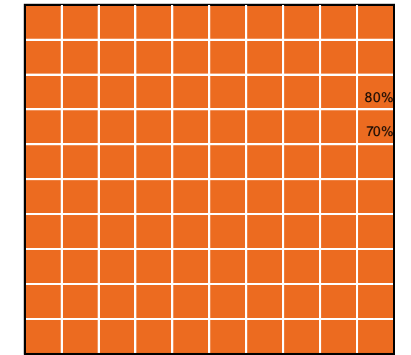
Vaccinations by State – Australian Capital Territory

Data as at:
19 May 2022

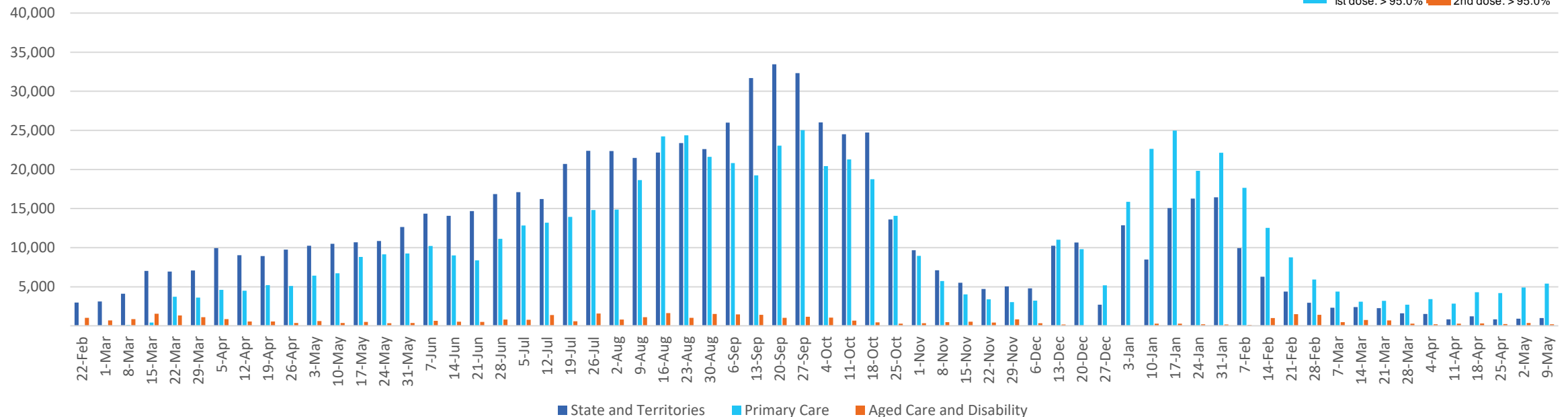
Past 7 days

	13/05/2022	14/05/2022	15/05/2022	16/05/2022	17/05/2022	18/05/2022	19/05/2022	7 day total
State and Territory	1,796	129	47	930	738	710	819	5,169
Aged Care and Disability	140	16	<10	<10	<10	38	24	<10**
Primary Care	872	327	55	1,445	1,321	1,060	1,123	6,203
Total (rounded)	3 K	0 K	0 K	2 K	2 K	2 K	2 K	11 K

Eligible population by % coverage



Doses administered by channel



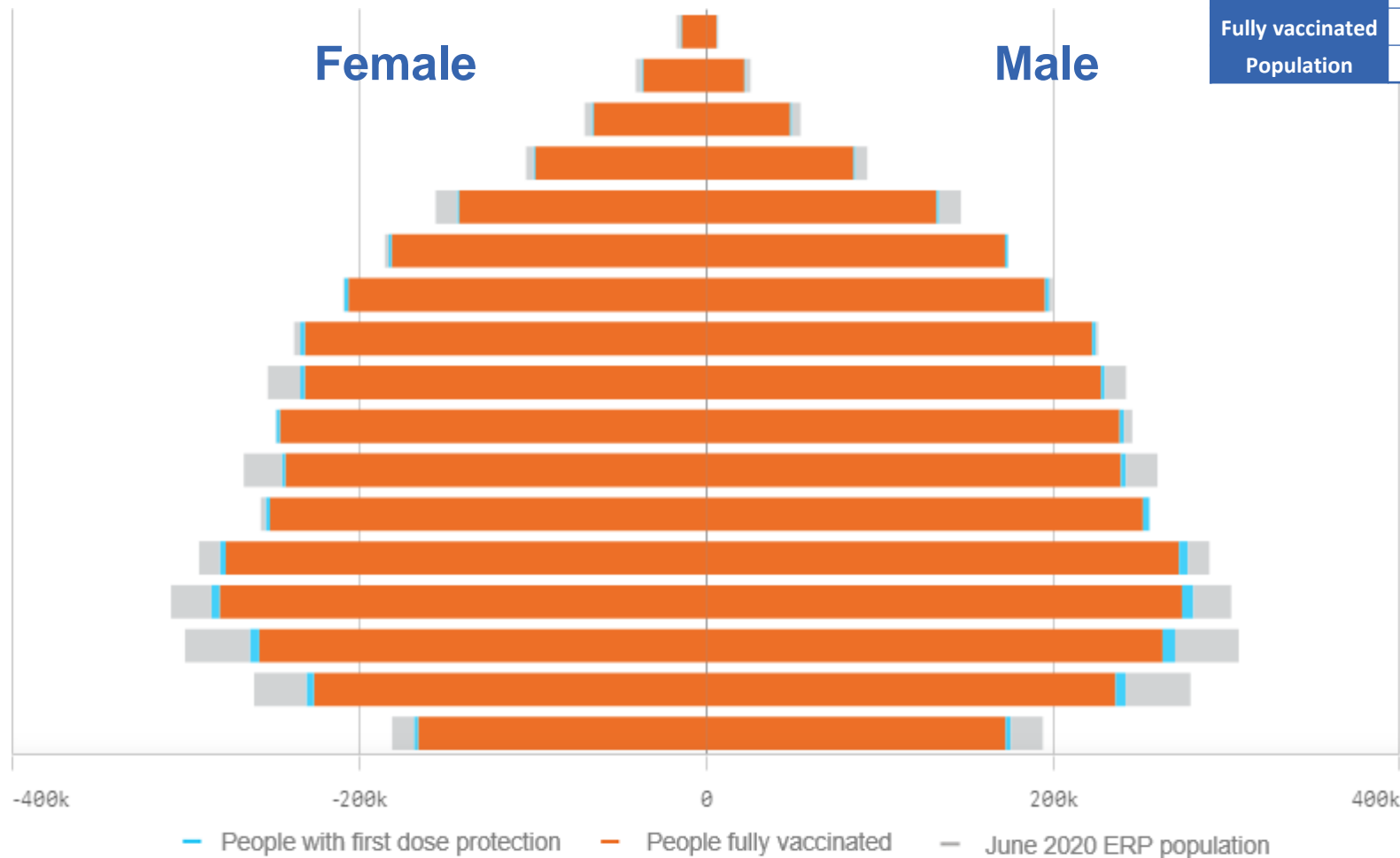
*Administration state breakdown indicates state in which a vaccine was administered and may differ to residential state. Recent weeks may be understated.

**Total appears lower due to historic changes.

Data as at:
19 May 2022

Vaccinations by State or Territory of residence

New South Wales



	16+	50+	70+
At least one dose	>95% 6,325,943	>95% 2,841,147	>95% 1,019,232
Fully vaccinated	94.88% 6,229,645	>95% 2,807,694	>95% 1,005,937
Population	6,565,651	2,807,793	962,606

Age	At least one dose	Fully vaccinated
95+	>95%	>95%
90-94	>95%	>95%
85-89	>95%	>95%
80-84	>95%	>95%
75-79	>95%	>95%
70-74	>95%	>95%
65-69	>95%	>95%
60-64	>95%	>95%
55-59	93.90%	92.86%
50-54	>95%	>95%
45-49	92.53%	91.54%
40-44	>95%	>95%
35-39	>95%	94.57%
30-34	93.10%	91.13%
25-29	88.37%	86.13%
20-24	87.86%	85.86%
16-19	91.78%	90.32%

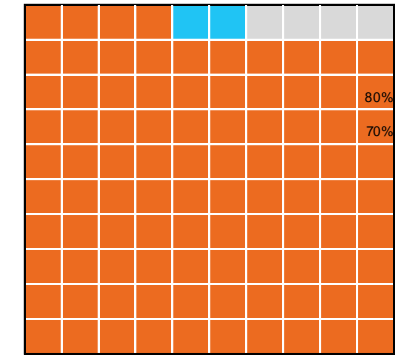
Vaccinations by State – New South Wales

Data as at:
19 May 2022

Past 7 days

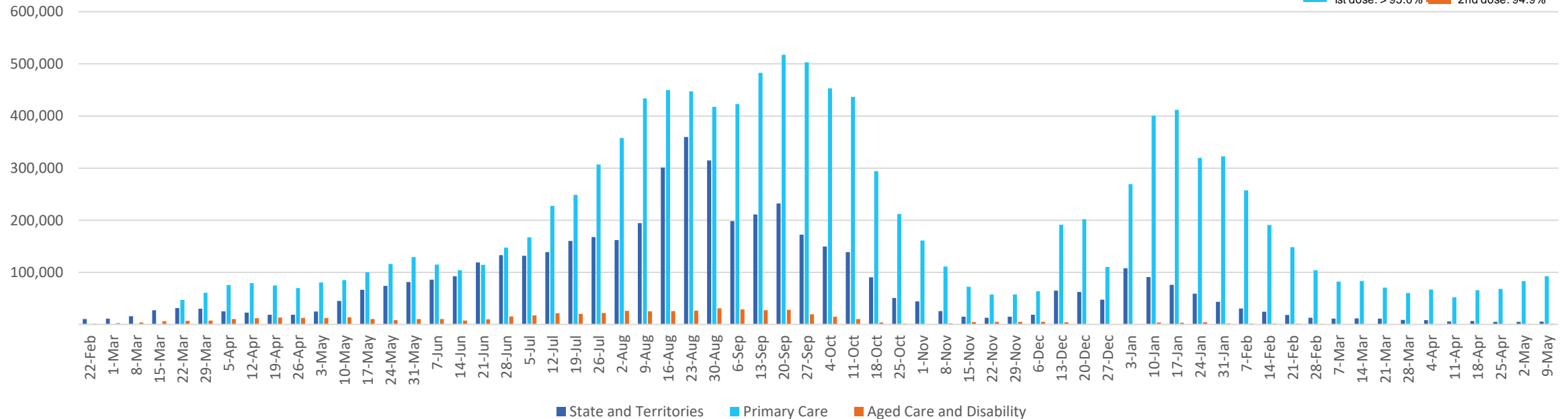
	13/05/2022	14/05/2022	15/05/2022	16/05/2022	17/05/2022	18/05/2022	19/05/2022	7 day total
State and Territory	1,093	162	1,076	713	226	1,127	1,551	5,948
Aged Care and Disability	243	12	<10	445	387	487	268	1,843
Primary Care	17,308	5,480	1,951	17,247	19,190	19,544	19,626	100,346
Total (rounded)	19 K	6 K	3 K	18 K	20 K	21 K	21 K	108 K

Eligible population by % coverage



1st dose: > 95.0% 2nd dose: 94.9%

Doses administered by channel

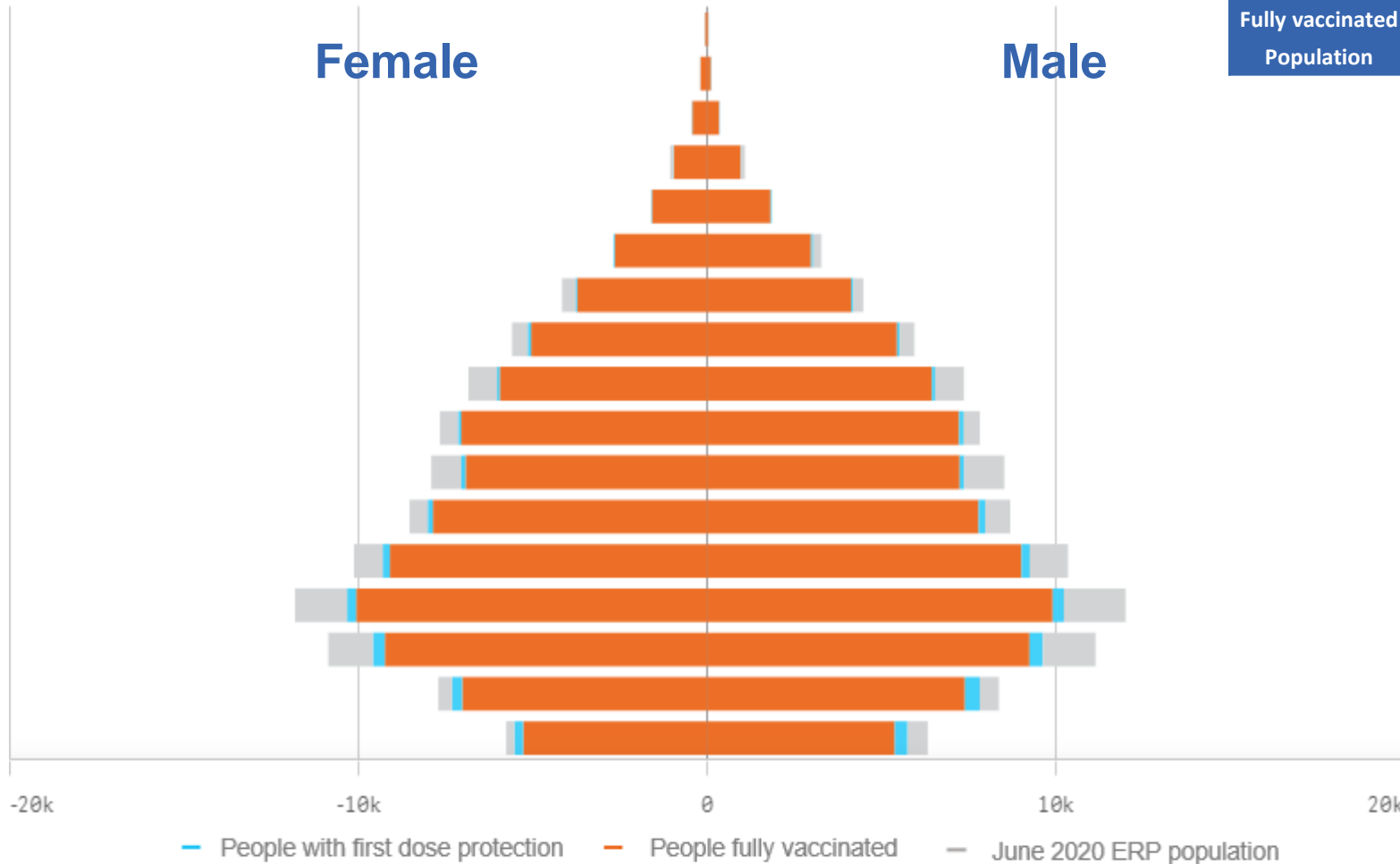


*Administration state breakdown indicates state in which a vaccine was administered and may differ to residential state. Recent weeks may be understated.

Data as at:
19 May 2022

Vaccinations by State or Territory of residence

Northern Territory



	16+	50+	70+
At least one dose	91.29% 173,974	93.35% 58,138	>95% 12,336
Fully vaccinated	88.83% 169,281	91.92% 57,250	>95% 12,116
Population	190,571	62,280	12,343

Age	At least one dose	Fully vaccinated
95+	>95%	91.75%
90-94	>95%	93.19%
85-89	>95%	>95%
80-84	>95%	>95%
75-79	>95%	>95%
70-74	>95%	94.63%
65-69	92.27%	91.06%
60-64	92.51%	91.06%
55-59	88.48%	87.29%
50-54	93.80%	92.33%
45-49	87.96%	86.35%
40-44	93.15%	91.08%
35-39	90.95%	88.70%
30-34	86.93%	84.35%
25-29	88.05%	84.62%
20-24	94.49%	89.98%
16-19	93.41%	88.23%

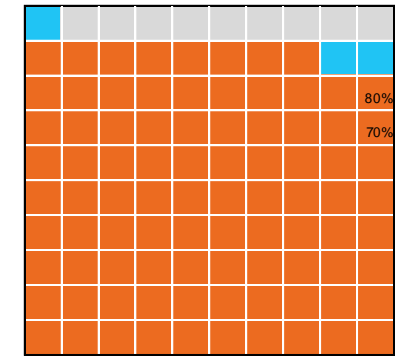
Vaccinations by State – Northern Territory

Data as at:
19 May 2022

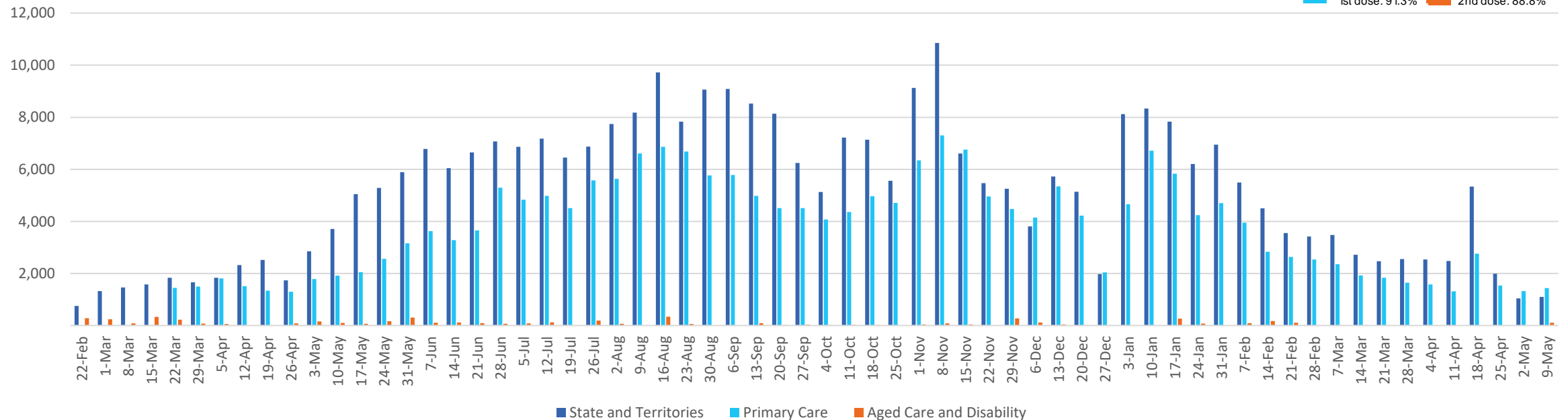
Past 7 days

	13/05/2022	14/05/2022	15/05/2022	16/05/2022	17/05/2022	18/05/2022	19/05/2022	7 day total
State and Territory	199	105	<10	243	189	189	247	1,176
Aged Care and Disability	19	<10	<10	19	<10	<10	<10	42
Primary Care	234	76	<10	186	299	334	366	1,497
Total (rounded)	0 K	0 K	0 K	0 K	0 K	1 K	1 K	3 K

Eligible population by % coverage



Doses administered by channel



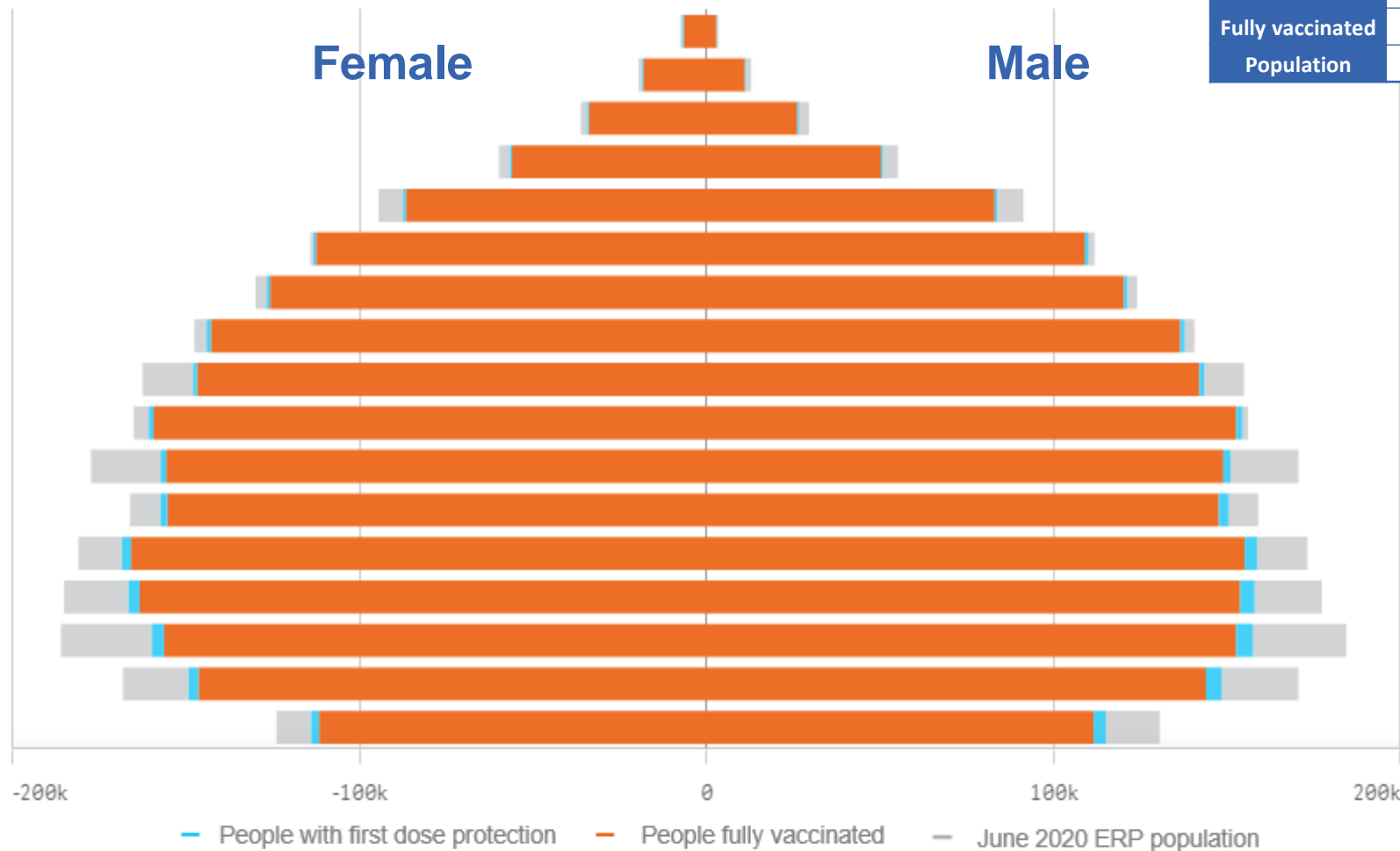
*Administration state breakdown indicates state in which a vaccine was administered and may differ to residential state. Recent weeks may be understated.

Data as at:
19 May 2022

Vaccinations by State or Territory of residence

Queensland

	16+	50+	70+
At least one dose	93.85% 3,859,731	>95% 1,742,494	>95% 604,689
Fully vaccinated	92.30% 3,796,057	>95% 1,724,262	>95% 597,223
Population	4,112,707	1,758,855	577,767



Age	At least one dose	Fully vaccinated
95+	>95%	>95%
90-94	>95%	>95%
85-89	>95%	>95%
80-84	>95%	>95%
75-79	>95%	>95%
70-74	>95%	>95%
65-69	>95%	>95%
60-64	>95%	>95%
55-59	91.91%	91.03%
50-54	>95%	>95%
45-49	88.67%	87.59%
40-44	94.80%	93.27%
35-39	92.54%	90.74%
30-34	89.88%	87.73%
25-29	86.03%	83.66%
20-24	88.15%	85.86%
16-19	90.07%	87.72%

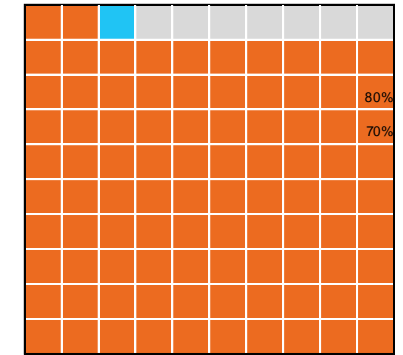
Vaccinations by State – Queensland

Data as at:
19 May 2022

Past 7 days

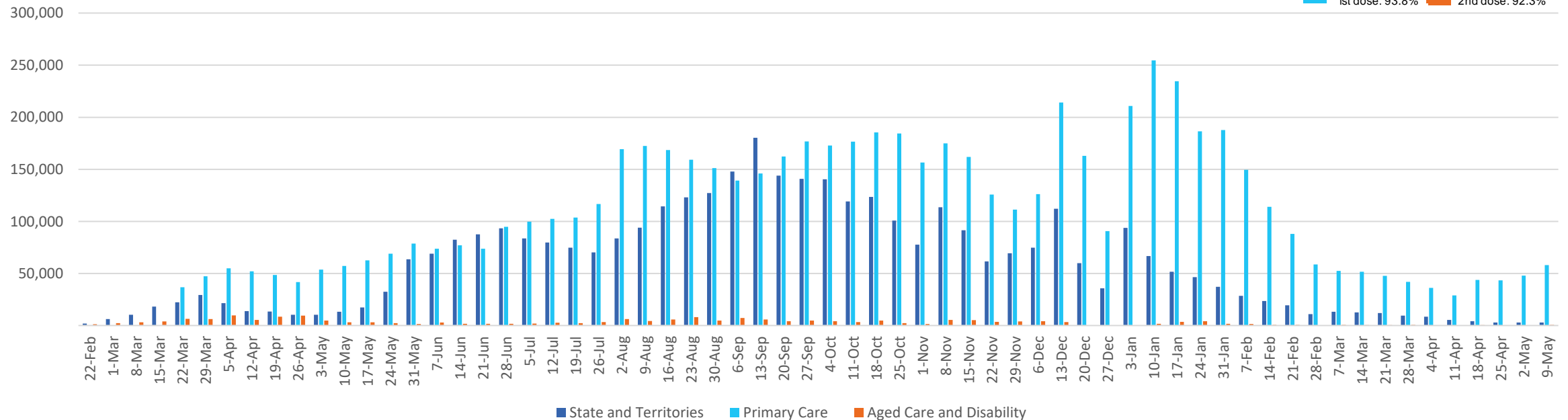
	13/05/2022	14/05/2022	15/05/2022	16/05/2022	17/05/2022	18/05/2022	19/05/2022	7 day total
State and Territory	558	485	43	272	709	820	626	3,513
Aged Care and Disability	84	50	37	148	132	251	414	1,116
Primary Care	10,058	2,341	1,520	10,056	12,248	11,826	12,675	60,724
Total (rounded)	11 K	3 K	2 K	10 K	13 K	13 K	14 K	65 K

Eligible population by % coverage



1st dose: 93.8% 2nd dose: 92.3%

Doses administered by channel

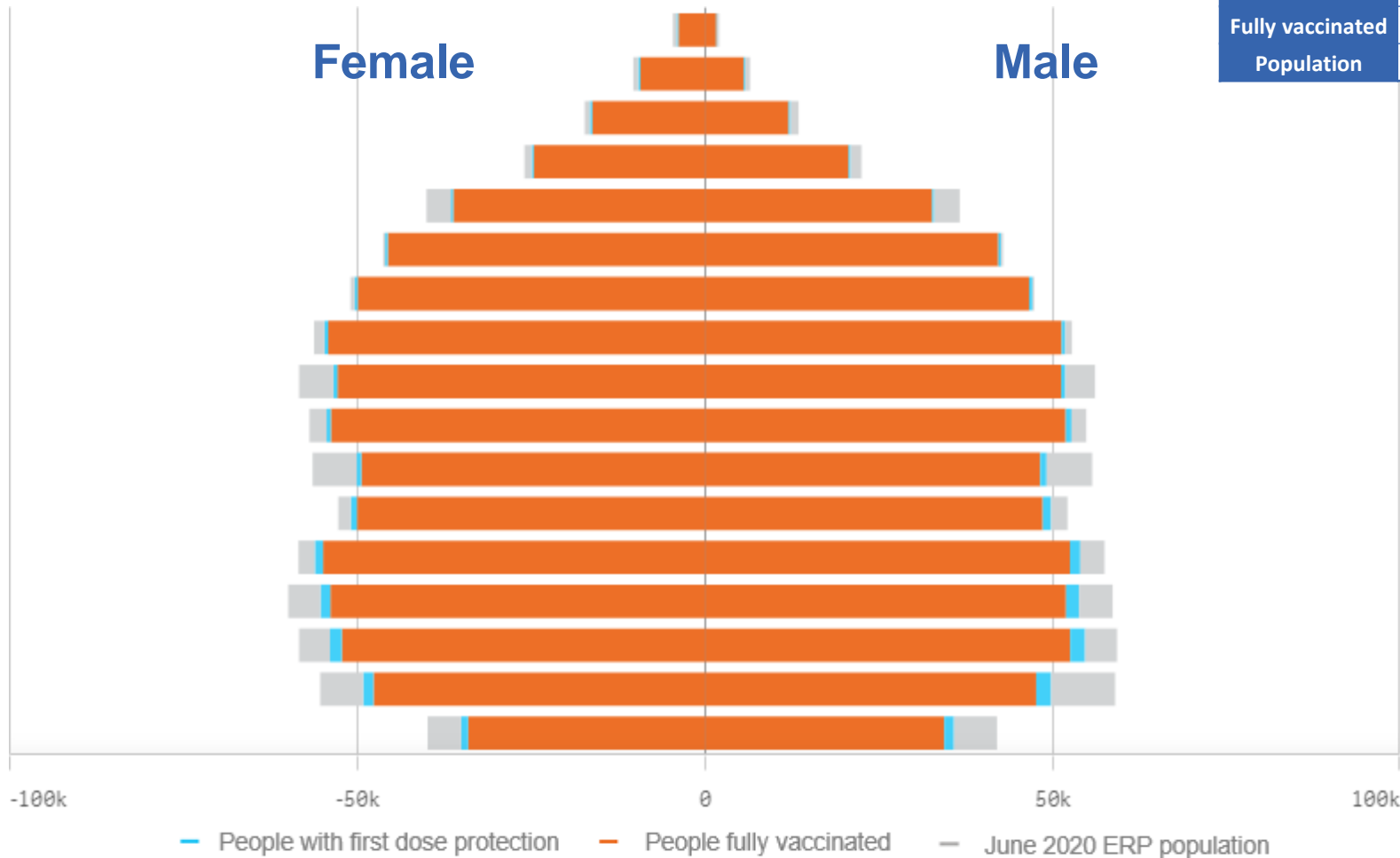


*Administration state breakdown indicates state in which a vaccine was administered and may differ to residential state. Recent weeks may be understated.

Data as at:
19 May 2022

Vaccinations by State or Territory of residence

South Australia



	16+		50+		70+	
At least one dose	>95%	1,374,846	>95%	672,168	>95%	254,644
Fully vaccinated	93.42%	1,345,587	>95%	663,631	>95%	251,044
Population	1,440,400		674,384		240,514	

Age	At least one dose	Fully vaccinated
95+	>95%	>95%
90-94	>95%	>95%
85-89	>95%	>95%
80-84	>95%	>95%
75-79	>95%	>95%
70-74	>95%	>95%
65-69	>95%	>95%
60-64	>95%	>95%
55-59	92.13%	91.01%
50-54	>95%	94.68%
45-49	88.63%	87.17%
40-44	>95%	94.20%
35-39	>95%	92.98%
30-34	92.86%	89.87%
25-29	93.55%	90.00%
20-24	87.42%	84.03%
16-19	86.76%	83.71%

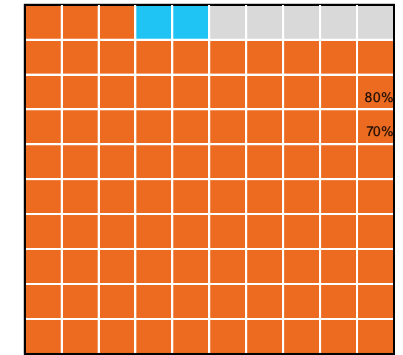
Vaccinations by State – South Australia

Data as at:
19 May 2022

Past 7 days

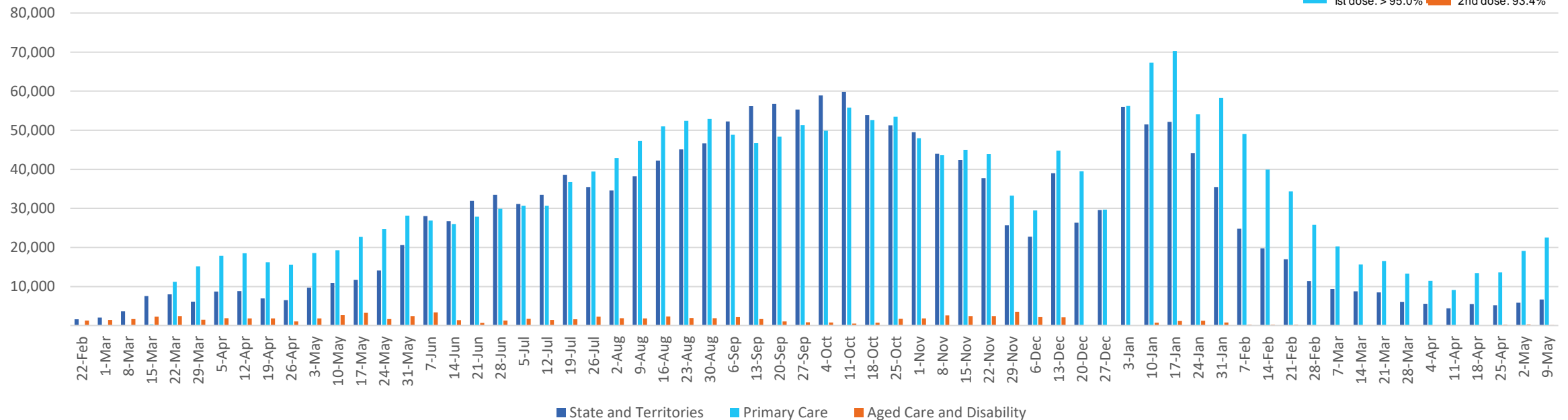
	13/05/2022	14/05/2022	15/05/2022	16/05/2022	17/05/2022	18/05/2022	19/05/2022	7 day total
State and Territory	1,147	762	412	971	809	1,311	1,259	6,671
Aged Care and Disability	106	<10	<10	<10	14	<10	72	195
Primary Care	4,132	1,222	447	4,568	4,347	5,007	4,047	23,770
Total (rounded)	5 K	2 K	1 K	6 K	5 K	6 K	5 K	31 K

Eligible population by % coverage



1st dose: > 95.0% 2nd dose: 93.4%

Doses administered by channel

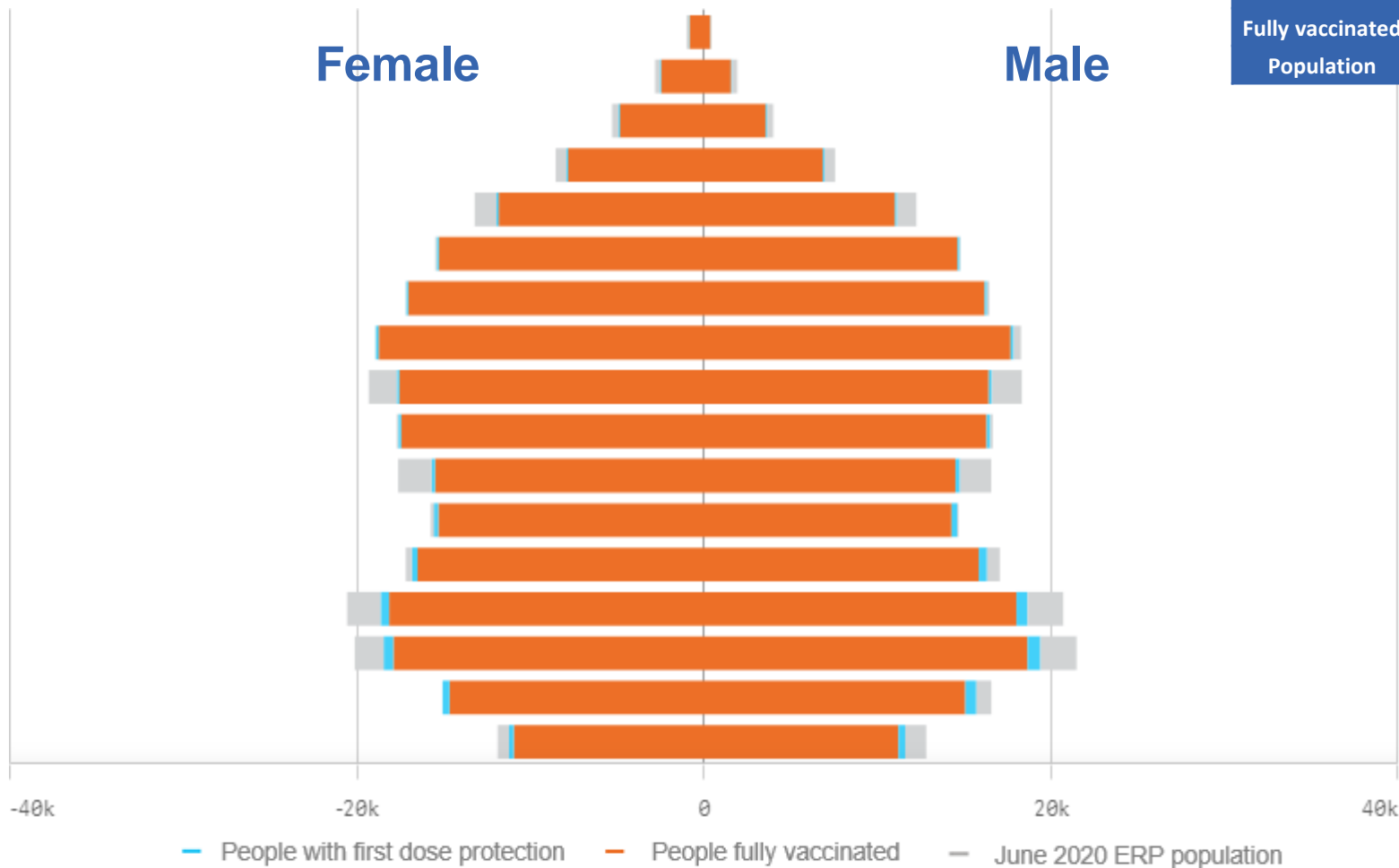


*Administration state breakdown indicates state in which a vaccine was administered and may differ to residential state. Recent weeks may be understated.

Data as at:
19 May 2022

Vaccinations by State or Territory of residence

Tasmania



	16+		50+		70+	
At least one dose	>95%	444,893	>95%	221,112	>95%	82,262
Fully vaccinated	>95%	435,842	>95%	218,664	>95%	81,164
Population	440,172		220,036		77,155	

Age	At least one dose	Fully vaccinated
95+	>95%	>95%
90-94	>95%	>95%
85-89	>95%	>95%
80-84	>95%	>95%
75-79	>95%	>95%
70-74	>95%	>95%
65-69	>95%	>95%
60-64	>95%	>95%
55-59	91.21%	90.31%
50-54	>95%	>95%
45-49	89.28%	87.82%
40-44	>95%	>95%
35-39	>95%	>95%
30-34	>95%	>95%
25-29	>95%	>95%
20-24	>95%	94.23%
16-19	92.51%	89.80%

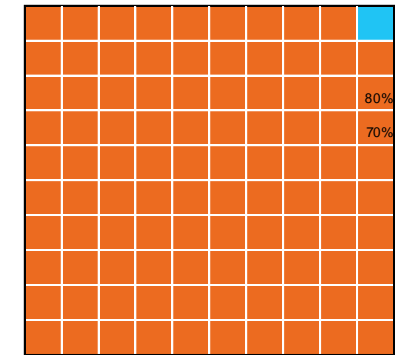
Vaccinations by State – Tasmania

Data as at:
19 May 2022

Past 7 days

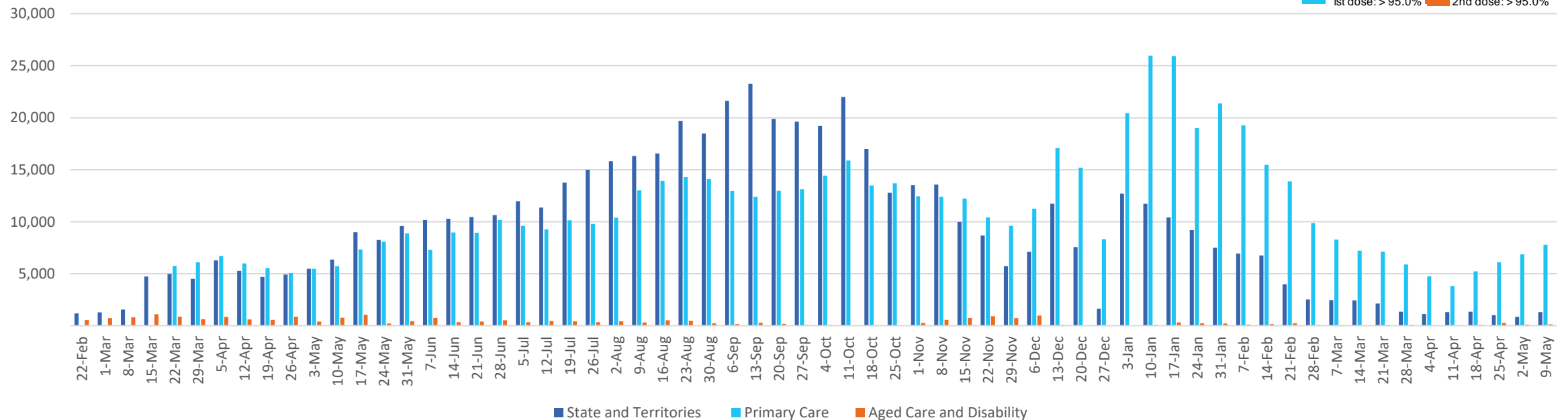
	13/05/2022	14/05/2022	15/05/2022	16/05/2022	17/05/2022	18/05/2022	19/05/2022	7 day total
State and Territory	200	225	141	66	266	276	120	1,294
Aged Care and Disability	<10	13	<10	<10	<10	36	29	78
Primary Care	1,361	487	49	1,644	1,535	1,591	1,615	8,282
Total (rounded)	2 K	1 K	0 K	2 K	2 K	2 K	2 K	10 K

Eligible population by % coverage



1st dose: > 95.0% 2nd dose: > 95.0%

Doses administered by channel

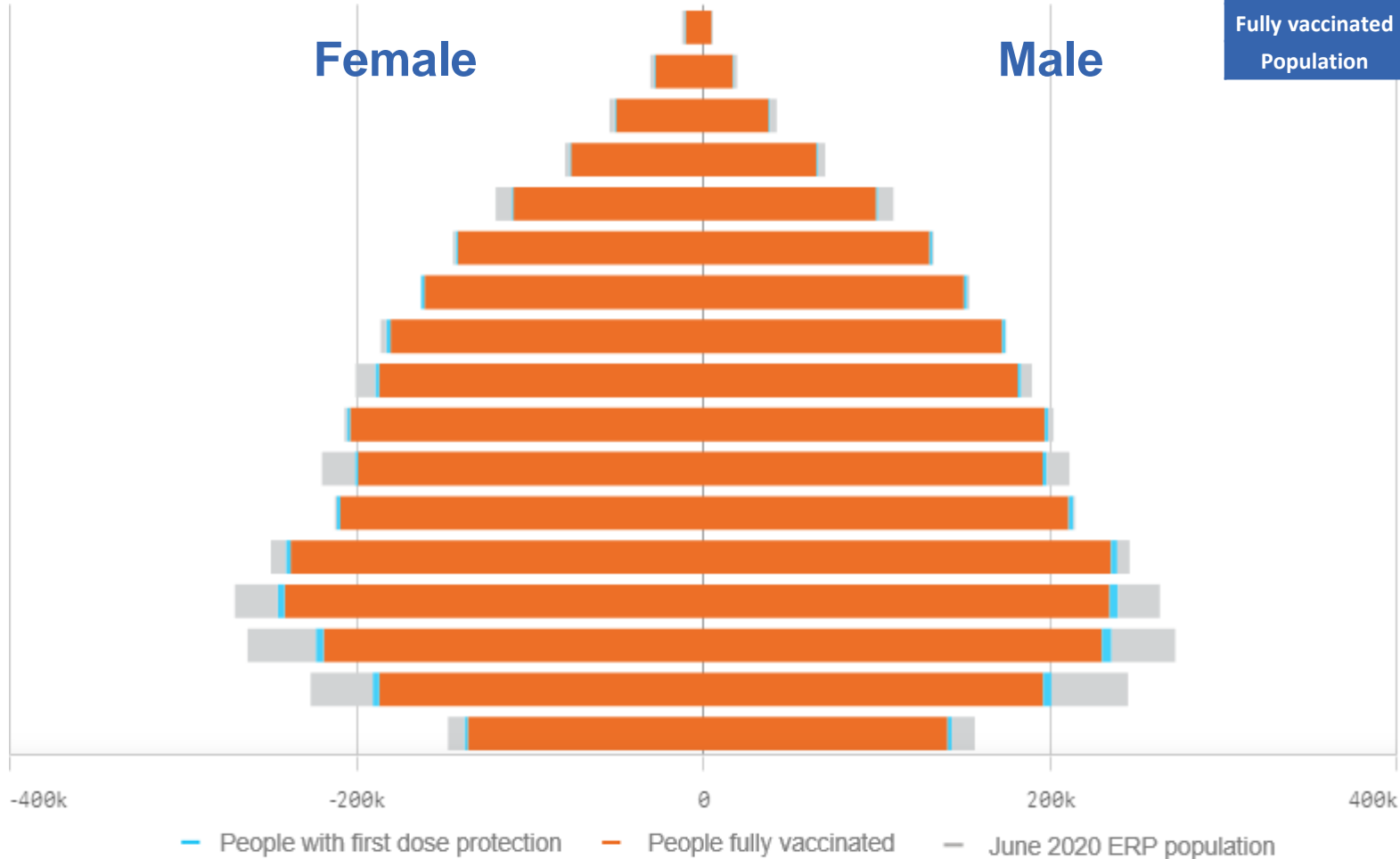


*Administration state breakdown indicates state in which a vaccine was administered and may differ to residential state. Recent weeks may be understated.

Data as at: 19 May 2022

Vaccinations by State or Territory of residence

Victoria



	16+		50+		70+	
At least one dose	>95%	5,159,335	>95%	2,233,135	>95%	782,206
Fully vaccinated	93.99%	5,082,523	>95%	2,205,620	>95%	771,665
Population	5,407,574		2,211,211		743,519	

Age	At least one dose	Fully vaccinated
95+	>95%	>95%
90-94	>95%	>95%
85-89	>95%	>95%
80-84	>95%	>95%
75-79	>95%	>95%
70-74	>95%	>95%
65-69	>95%	>95%
60-64	>95%	>95%
55-59	>95%	94.44%
50-54	>95%	>95%
45-49	92.58%	91.63%
40-44	>95%	>95%
35-39	>95%	>95%
30-34	91.05%	89.34%
25-29	86.09%	84.10%
20-24	83.27%	81.37%
16-19	92.60%	91.10%

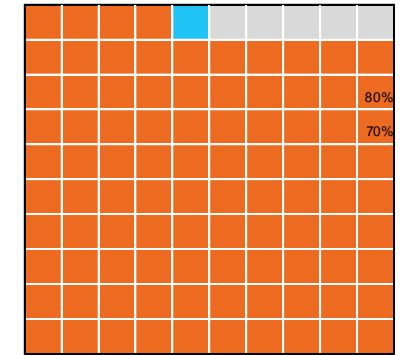
Vaccinations by State – Victoria

Data as at:
19 May 2022

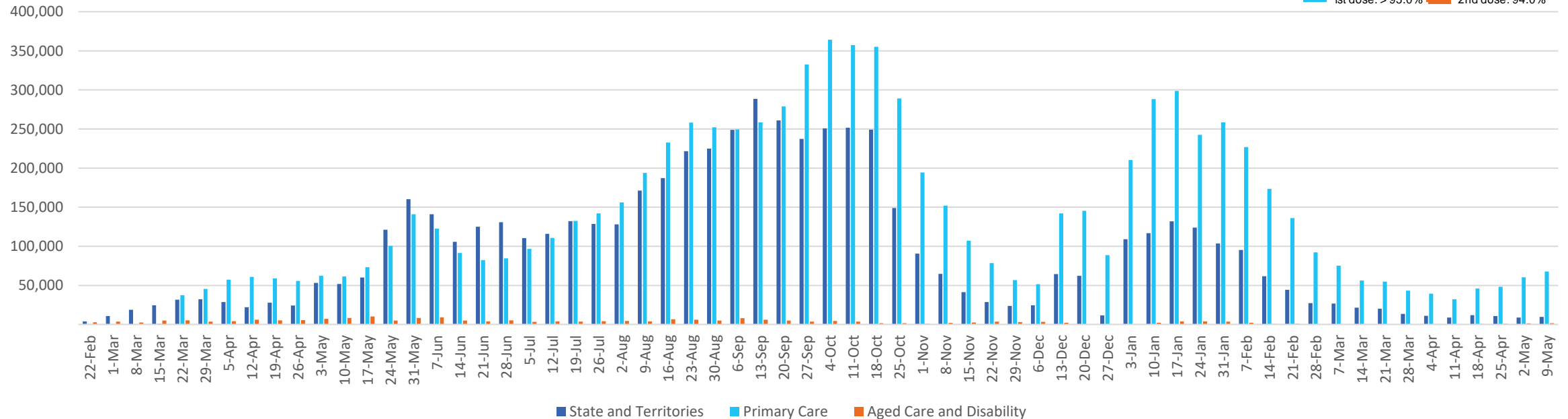
Past 7 days

	13/05/2022	14/05/2022	15/05/2022	16/05/2022	17/05/2022	18/05/2022	19/05/2022	7 day total
State and Territory	1,708	1,505	488	1,694	1,886	1,871	1,955	11,107
Aged Care and Disability	366	90	99	379	334	505	487	2,260
Primary Care	12,897	3,924	1,852	12,542	14,617	14,663	14,692	75,187
Total (rounded)	15 K	6 K	2 K	15 K	17 K	17 K	17 K	89 K

Eligible population by % coverage



Doses administered by channel

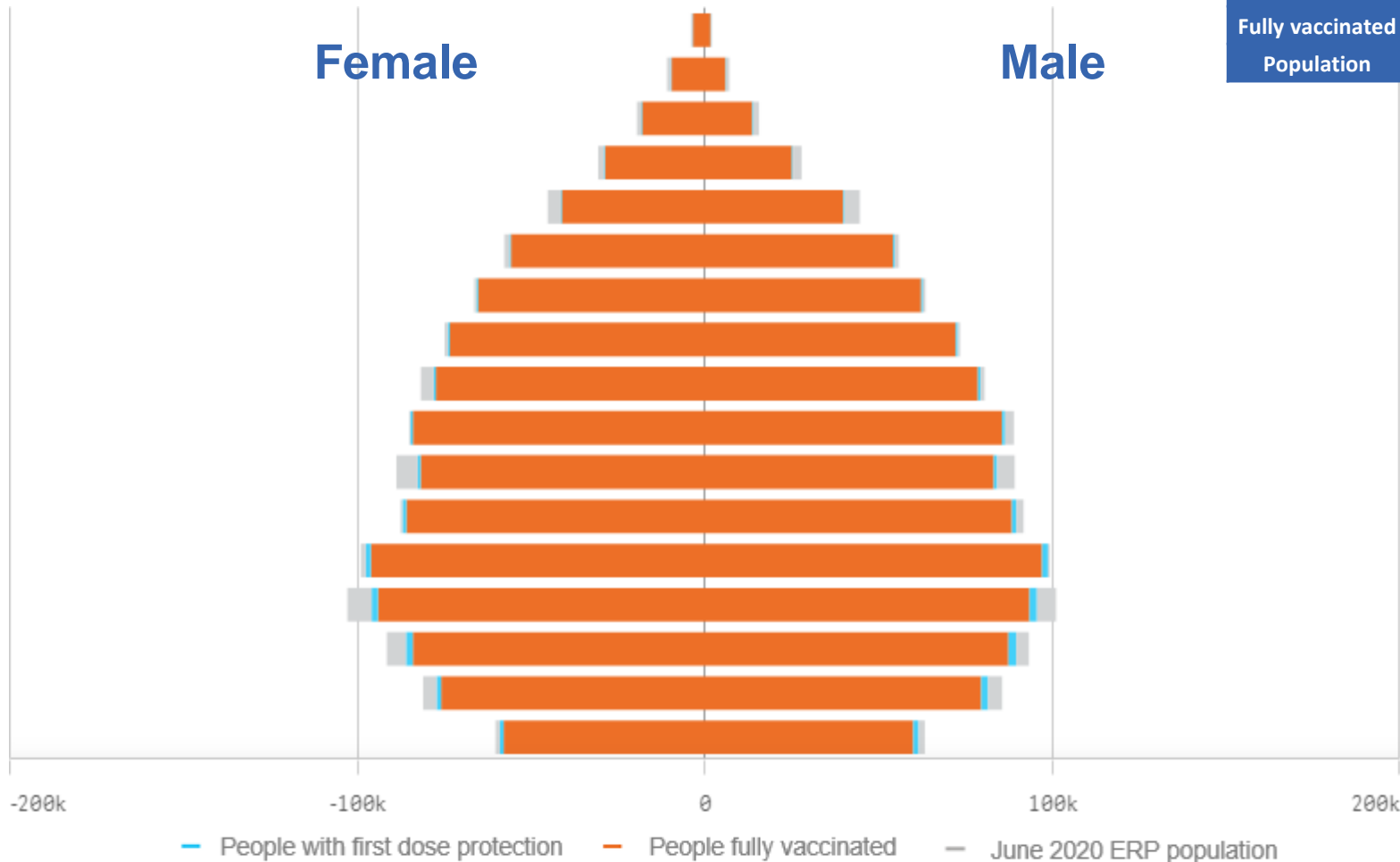


*Administration state breakdown indicates state in which a vaccine was administered and may differ to residential state. Recent weeks may be understated.

Data as at:
19 May 2022

Vaccinations by State or Territory of residence

Western Australia



	16+		50+		70+	
At least one dose	>95%	2,094,880	>95%	905,376	>95%	300,847
Fully vaccinated	>95%	2,063,672	>95%	896,533	>95%	297,322
Population	2,114,978		885,370		280,281	

Age	At least one dose	Fully vaccinated
95+	>95%	>95%
90-94	>95%	>95%
85-89	>95%	>95%
80-84	>95%	>95%
75-79	>95%	>95%
70-74	>95%	>95%
65-69	>95%	>95%
60-64	>95%	>95%
55-59	>95%	>95%
50-54	>95%	>95%
45-49	93.80%	92.76%
40-44	>95%	>95%
35-39	>95%	>95%
30-34	94.22%	92.22%
25-29	>95%	93.07%
20-24	>95%	93.47%
16-19	>95%	>95%

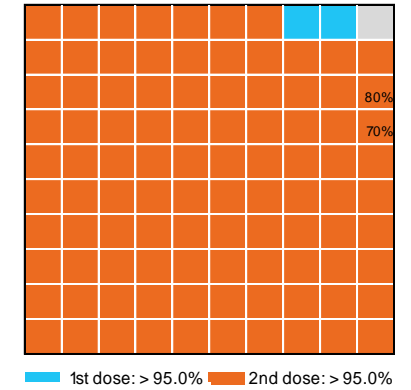
Vaccinations by State – Western Australia

Data as at:
19 May 2022

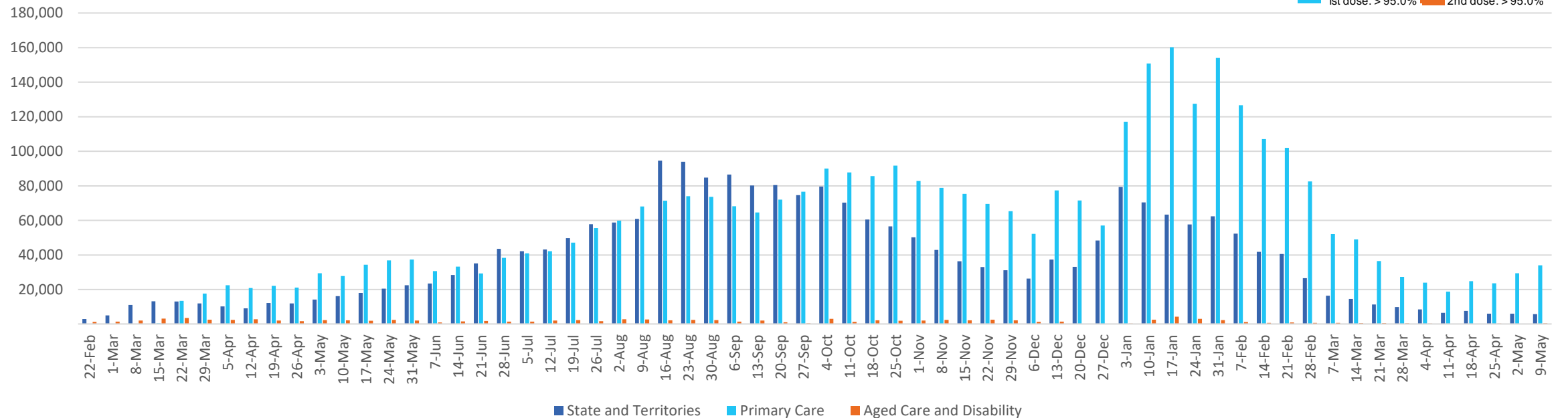
Past 7 days

	13/05/2022	14/05/2022	15/05/2022	16/05/2022	17/05/2022	18/05/2022	19/05/2022	7 day total
State and Territory	1,035	767	417	1,059	944	1,310	1,176	6,708
Aged Care and Disability	76	<10	<10	106	128	158	66	539
Primary Care	6,320	2,572	869	5,902	6,500	6,443	6,604	35,210
Total (rounded)	7 K	3 K	1 K	7 K	8 K	8 K	8 K	42 K

Eligible population by % coverage



Doses administered by channel



*Administration state breakdown indicates state in which a vaccine was administered and may differ to residential state. Recent weeks may be understated.