



Australian Government
Operation COVID Shield

COVID-19 Vaccine Roll-out Jurisdictional Breakdowns

14 May 2022

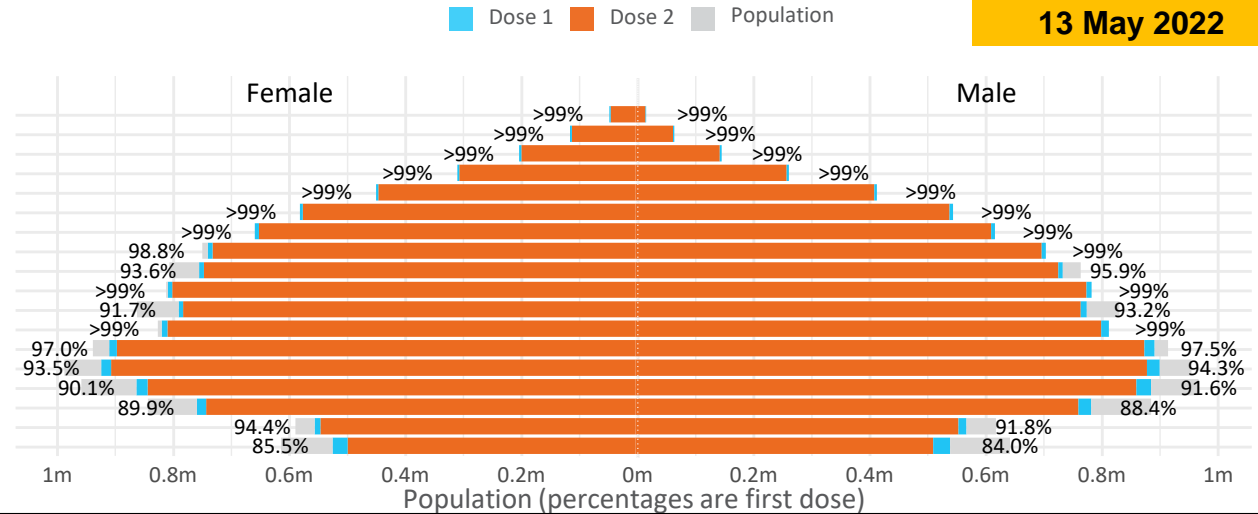
Doses by age and sex

First and second doses by age and sex

	16+	50+	12-15	5-11
Dose 1	97.19% (20,041,311 doses / 20,619,959 people)	>99% (8,876,659 doses / 8,749,703 people)	84.77% (1,054,502 doses / 1,243,990 people)	52.78% (1,201,498 doses / 2,276,638 people)
Dose 2	95.58% (19,709,065 doses / 20,619,959 people)	>99% (8,770,254 doses / 8,749,703 people)	80.35% (999,589 doses / 1,243,990 people)	37.89% (862,730 doses / 2,276,638 people)

Data as at:
13 May 2022

Age	Dose 1	Dose 2
95+	62,890 (>99%)	59,493 (>99%)
90-94	178,487 (>99%)	172,894 (>99%)
85-89	345,953 (>99%)	339,014 (>99%)
80-84	566,168 (>99%)	558,904 (>99%)
75-79	855,642 (>99%)	847,295 (>99%)
70-74	1,115,601 (>99%)	1,104,526 (>99%)
65-69	1,265,295 (>99%)	1,251,016 (>99%)
60-64	1,432,436 (>99%)	1,416,291 (98.6%)
55-59	1,475,706 (94.9%)	1,459,242 (93.8%)
50-54	1,578,481 (>99%)	1,561,579 (>99%)
45-49	1,551,802 (92.6%)	1,533,373 (91.5%)
40-44	1,619,271 (>99%)	1,595,316 (98.5%)
35-39	1,788,995 (97.5%)	1,757,161 (95.8%)
30-34	1,815,455 (94.4%)	1,774,105 (92.2%)
25-29	1,742,767 (91.4%)	1,695,537 (88.9%)
20-24	1,532,842 (89.5%)	1,493,669 (87.2%)
16-19	1,113,520 (93.1%)	1,089,650 (91.1%)
12-15	1,054,502 (84.8%)	999,589 (80.4%)



	AUS	ACT	NSW	NT	QLD	SA	TAS	VIC	WA
16 and over - dose 1	20,041,311	352,447	6,322,916	173,936	3,857,491	1,374,055	444,668	5,156,855	2,093,557
16 and over - dose 2	19,709,065	346,894	6,227,139	169,227	3,793,765	1,344,715	435,591	5,080,286	2,062,338
16 and over - population	20,619,959*	344,037	6,565,651	190,571	4,112,707	1,440,400	440,172	5,407,574	2,114,978
16 and over % with dose 1	97.19%	>99%	96.30%	91.27%	93.79%	95.39%	>99%	95.36%	98.99%
16 and over % with dose 2	95.58%	>99%	94.84%	88.80%	92.24%	93.36%	98.96%	93.95%	97.51%
5 to 11 - dose 1	1,201,498	31,940	358,455	13,250	208,723	84,214	28,695	326,807	141,575
5 to 11 - dose 2	862,730	26,555	261,543	8,206	144,887	60,873	22,665	236,221	97,338
5 to 11 - population	2,276,638	39,789	716,460	24,750	478,731	148,816	45,033	578,499	244,154
5 to 11 % with dose 1	52.78%	80.27%	50.03%	53.54%	43.60%	56.59%	63.72%	56.49%	57.99%
5 to 11 % with dose 2	37.89%	66.74%	36.50%	33.16%	30.26%	40.90%	50.33%	40.83%	39.87%
12 to 15 - dose 1	1,054,502	20,091	324,307	10,834	206,856	68,466	22,953	275,486	115,939
12 to 15 - dose 2	999,589	19,566	310,121	9,761	193,776	64,842	21,856	263,835	107,474
12 to 15 - population	1,243,990	19,693	390,330	13,060	270,146	82,747	26,308	308,611	132,869
12 to 15 % with dose 1	84.77%	>99%	83.09%	82.96%	76.57%	82.74%	87.27%	89.27%	87.26%
12 to 15 % with dose 2	80.35%	>99%	79.45%	74.74%	71.73%	78.36%	83.08%	85.49%	80.89%

*National population will not equal sum of listed jurisdictions due to a small number of people counted in national population residing in some 'other' territories. Sum of state doses will not add to national total as some records are unable to be geocoded to a State or Territory. Doses sourced from Australian Immunisation Register, population from ABS ERP June 2020

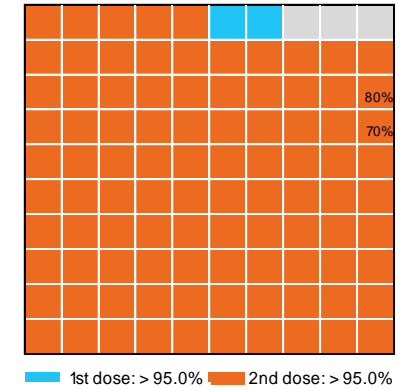
Vaccinations by State – National Summary

Data as at: 13 May 2022

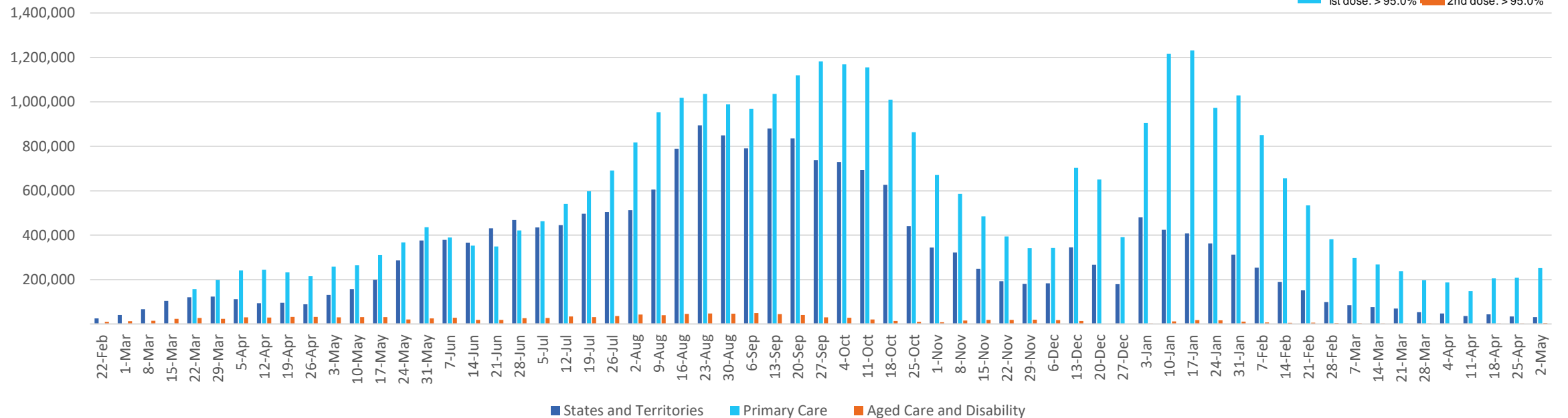
Past 7 days

	07/05/2022	08/05/2022	09/05/2022	10/05/2022	11/05/2022	12/05/2022	13/05/2022	7 day total
State and Territory	5,263	1,737	6,219	6,544	6,695	7,334	7,736	41,528
Aged Care and Disability	299	115	484	913	689	1,243	1,034	4,777
Primary Care	15,355	4,736	52,062	58,558	59,351	59,611	53,182	302,855
Total (rounded)	21 K	7 K	59 K	66 K	67 K	68 K	62 K	349 K

Eligible population by % coverage



Doses administered by channel

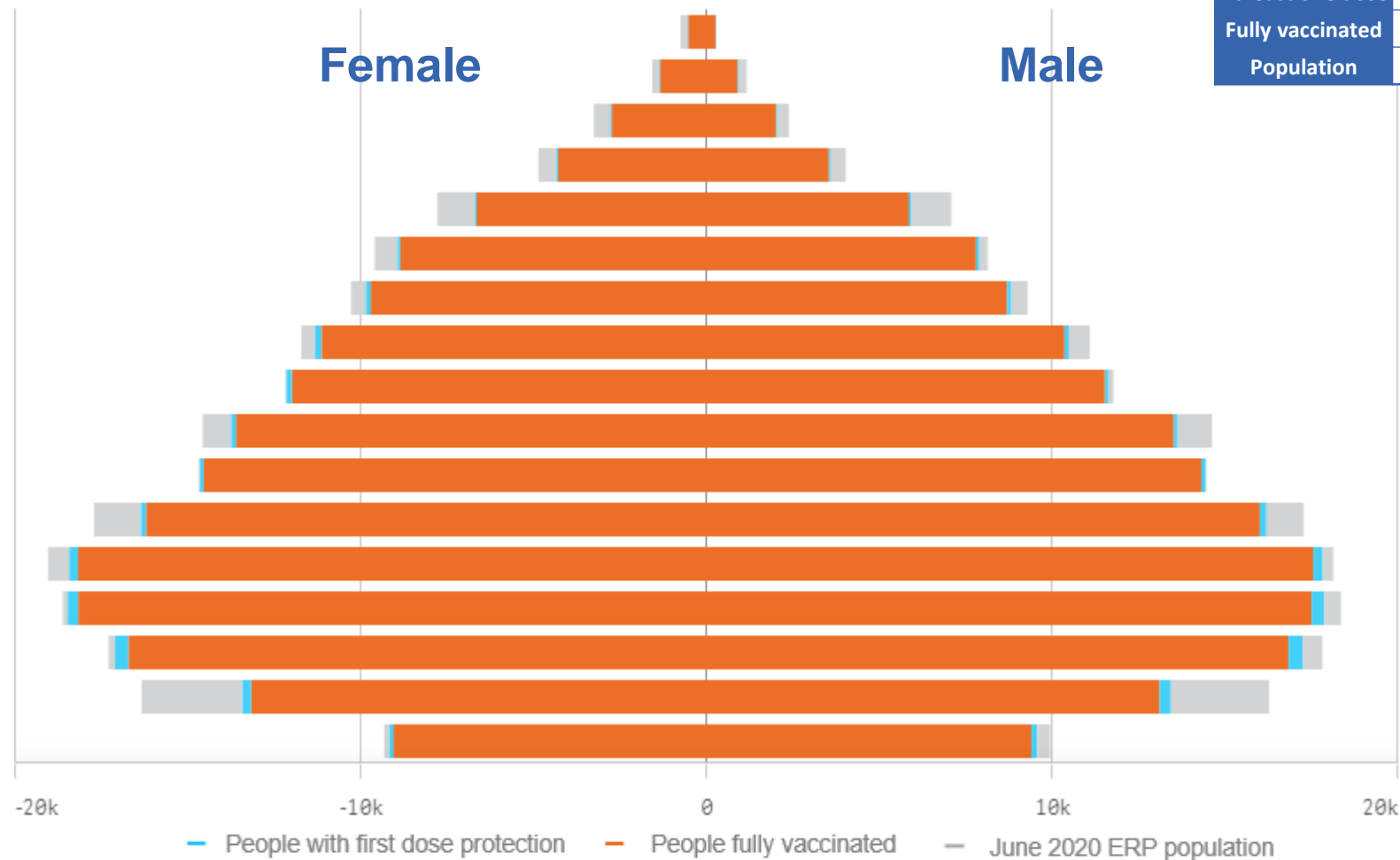


*Administration state breakdown indicates state in which a vaccine was administered and may differ to residential state. Recent weeks may be understated.

Data as at:
13 May 2022

Vaccinations by State or Territory of residence

Australian Capital Territory



	16+	50+	70+
At least one dose	>95% 352,447	>95% 137,368	>95% 45,517
Fully vaccinated	>95% 346,894	>95% 135,569	>95% 44,882
Population	344,037	127,802	39,946

Age	At least one dose	Fully vaccinated
95+	>95%	>95%
90-94	>95%	>95%
85-89	>95%	>95%
80-84	>95%	>95%
75-79	>95%	>95%
70-74	>95%	>95%
65-69	>95%	>95%
60-64	>95%	>95%
55-59	>95%	>95%
50-54	>95%	>95%
45-49	>95%	>95%
40-44	>95%	>95%
35-39	>95%	>95%
30-34	>95%	>95%
25-29	>95%	>95%
20-24	82.92%	80.90%
16-19	>95%	>95%

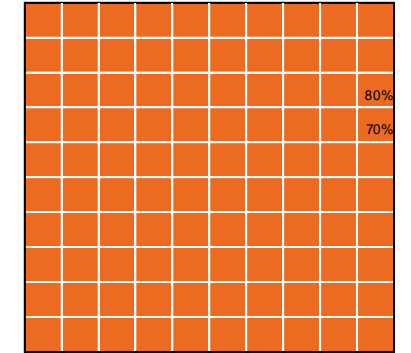
Vaccinations by State – Australian Capital Territory

Data as at: 13 May 2022

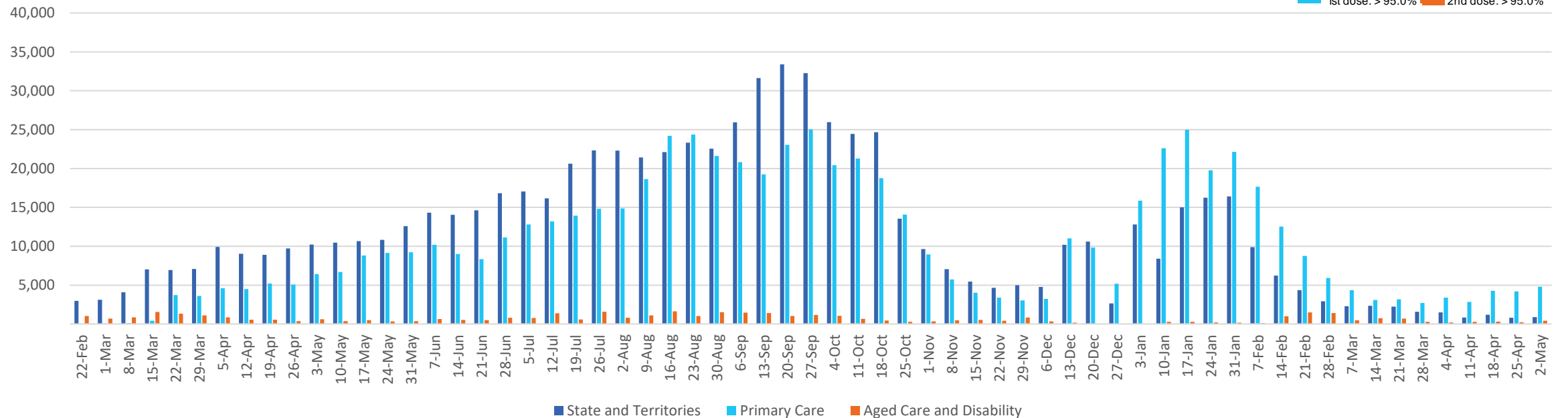
Past 7 days

	07/05/2022	08/05/2022	09/05/2022	10/05/2022	11/05/2022	12/05/2022	13/05/2022	7 day total
State and Territory	136	70	624	697	546	691	1,796	4,560
Aged Care and Disability	27	<10	46	156	58	51	140	478
Primary Care	383	100	822	1,181	1,058	1,087	872	5,503
Total (rounded)	1 K	0 K	1 K	2 K	2 K	2 K	3 K	11 K

Eligible population by % coverage



Doses administered by channel



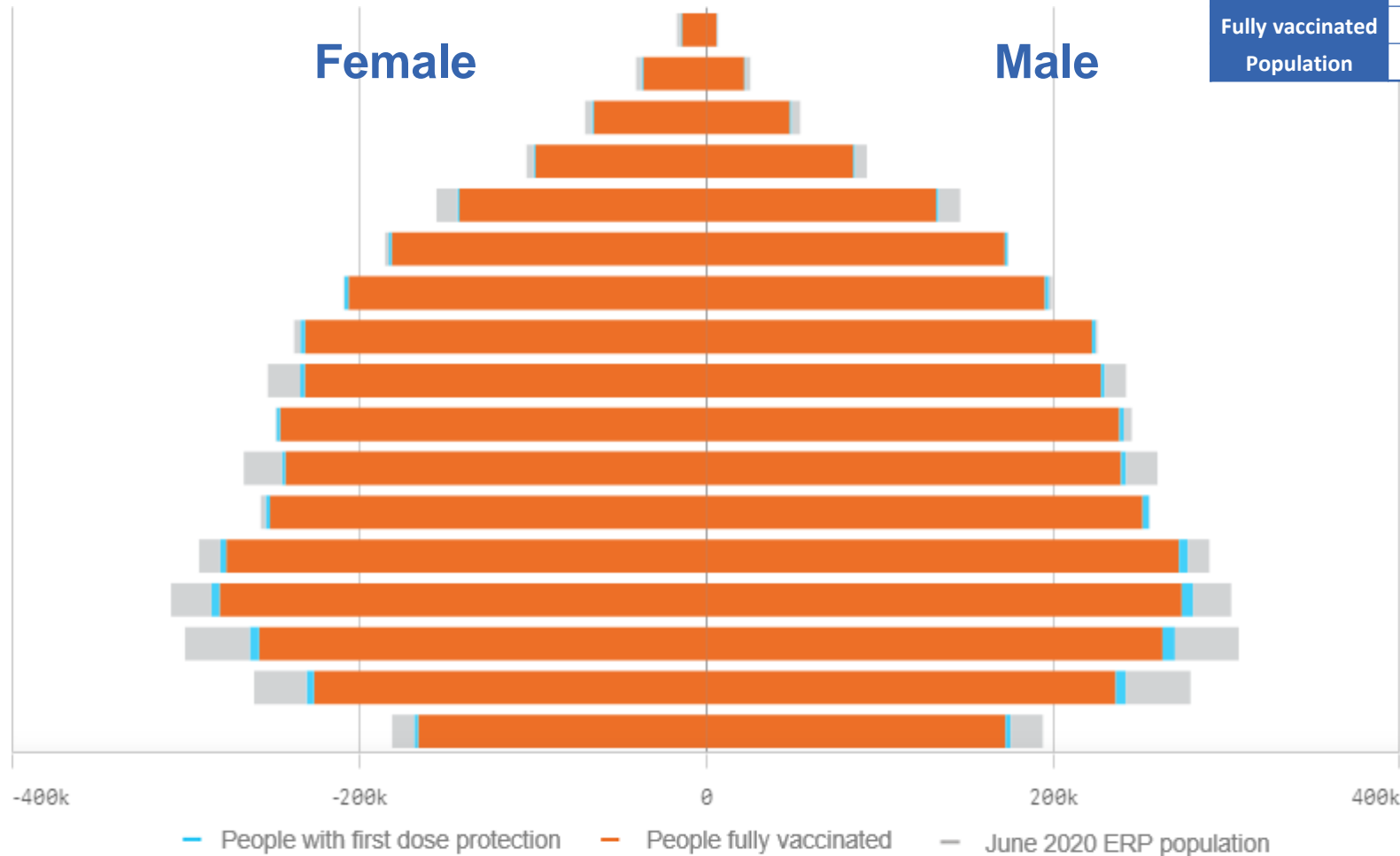
*Administration state breakdown indicates state in which a vaccine was administered and may differ to residential state. Recent weeks may be understated.

Data as at:
13 May 2022

Vaccinations by State or Territory of residence

New South Wales

	16+	50+	70+
At least one dose	>95% 6,322,916	>95% 2,839,010	>95% 1,017,853
Fully vaccinated	94.84% 6,227,139	>95% 2,805,641	>95% 1,004,549
Population	6,565,651	2,807,793	962,606



Age	At least one dose	Fully vaccinated
95+	>95%	>95%
90-94	>95%	>95%
85-89	>95%	>95%
80-84	>95%	>95%
75-79	>95%	>95%
70-74	>95%	>95%
65-69	>95%	>95%
60-64	>95%	>95%
55-59	93.90%	92.86%
50-54	>95%	>95%
45-49	92.53%	91.55%
40-44	>95%	>95%
35-39	>95%	94.54%
30-34	93.06%	91.12%
25-29	88.36%	86.13%
20-24	87.85%	85.87%
16-19	91.74%	90.30%

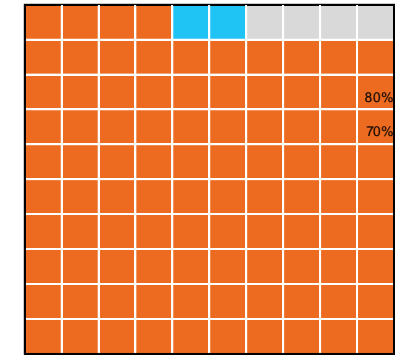
Vaccinations by State – New South Wales

Data as at: 13 May 2022

Past 7 days

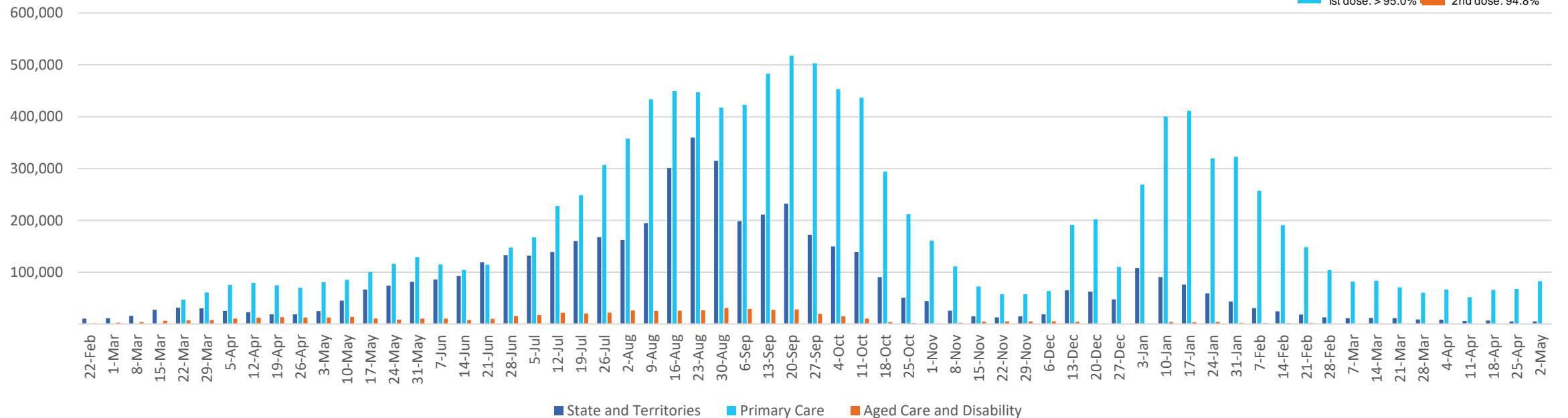
	07/05/2022	08/05/2022	09/05/2022	10/05/2022	11/05/2022	12/05/2022	13/05/2022	7 day total
State and Territory	964	338	755	889	1,094	1,230	1,093	6,363
Aged Care and Disability	78	<10	274	358	156	262	243	1,372
Primary Care	4,826	1,307	17,347	18,699	19,338	19,218	17,308	98,043
Total (rounded)	6 K	2 K	18 K	20 K	21 K	21 K	19 K	106 K

Eligible population by % coverage



1st dose: > 95.0% 2nd dose: 94.8%

Doses administered by channel

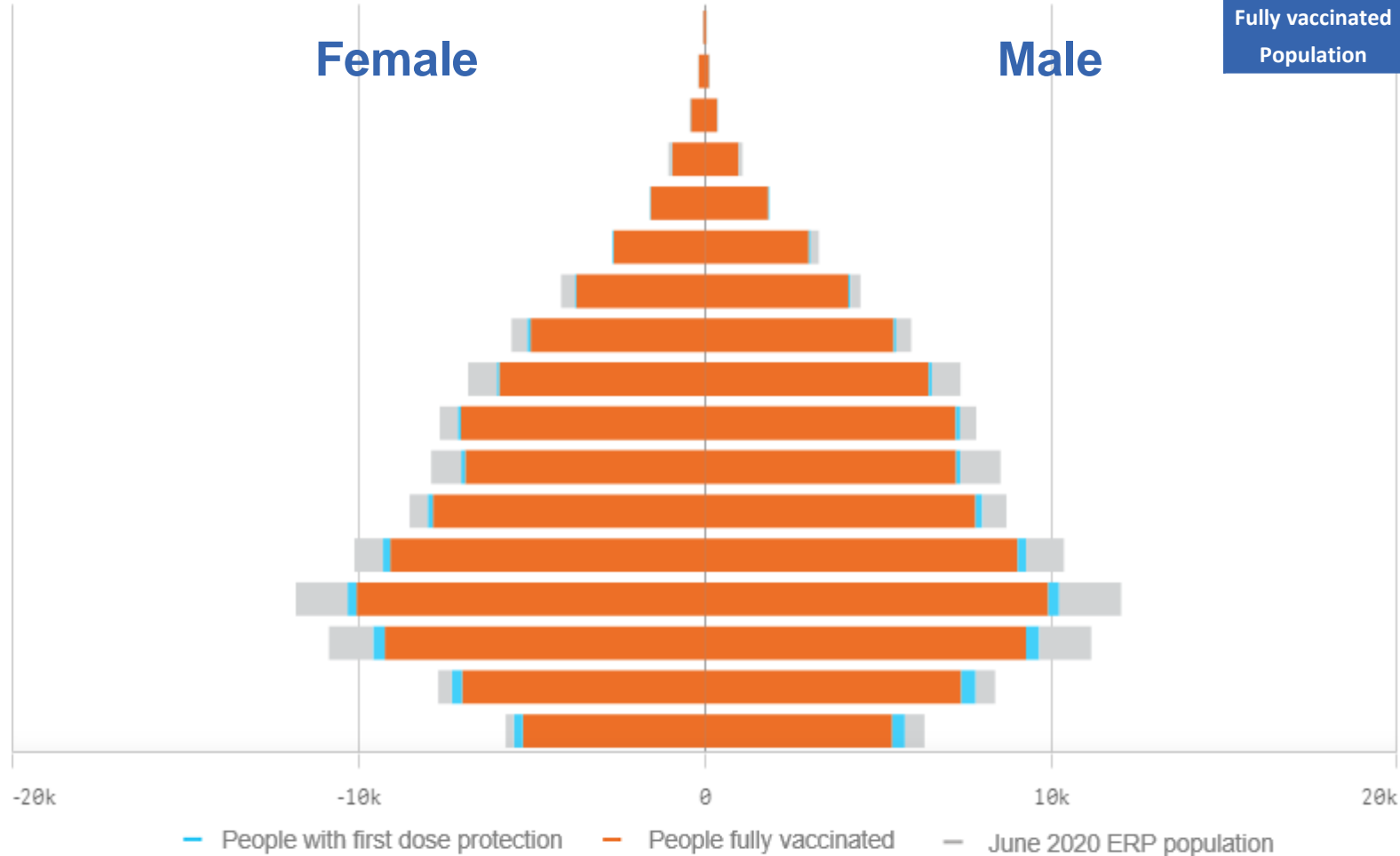


*Administration state breakdown indicates state in which a vaccine was administered and may differ to residential state. Recent weeks may be understated.

Data as at:
13 May 2022

Vaccinations by State or Territory of residence

Northern Territory



	16+	50+	70+
At least one dose	91.27% 173,936	93.30% 58,105	>95% 12,319
Fully vaccinated	88.80% 169,227	91.86% 57,213	>95% 12,101
Population	190,571	62,280	12,343

Age	At least one dose	Fully vaccinated
95+	>95%	89.69%
90-94	>95%	93.19%
85-89	>95%	>95%
80-84	>95%	>95%
75-79	>95%	>95%
70-74	>95%	94.65%
65-69	92.15%	90.94%
60-64	92.43%	90.95%
55-59	88.46%	87.29%
50-54	93.83%	92.34%
45-49	87.89%	86.31%
40-44	93.22%	91.12%
35-39	90.99%	88.68%
30-34	86.86%	84.30%
25-29	88.10%	84.69%
20-24	94.38%	89.90%
16-19	93.47%	88.22%

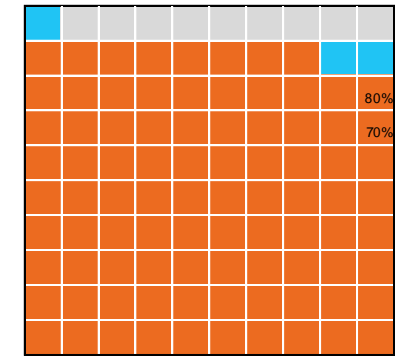
Vaccinations by State – Northern Territory

Data as at:
13 May 2022

Past 7 days

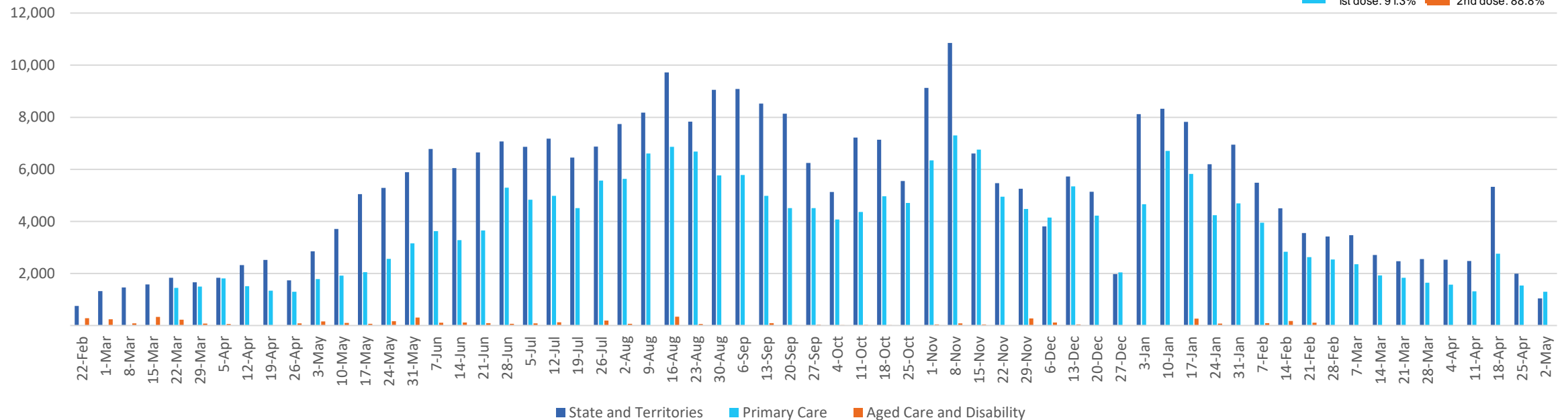
	07/05/2022	08/05/2022	09/05/2022	10/05/2022	11/05/2022	12/05/2022	13/05/2022	7 day total
State and Territory	91	<10	266	237	215	272	199	1,288
Aged Care and Disability	<10	<10	<10	<10	27	47	19	93
Primary Care	38	<10	265	362	309	307	234	1,517
Total (rounded)	0 K	0 K	1 K	1 K	1 K	1 K	0 K	3 K

Eligible population by % coverage



1st dose: 91.3% 2nd dose: 88.8%

Doses administered by channel

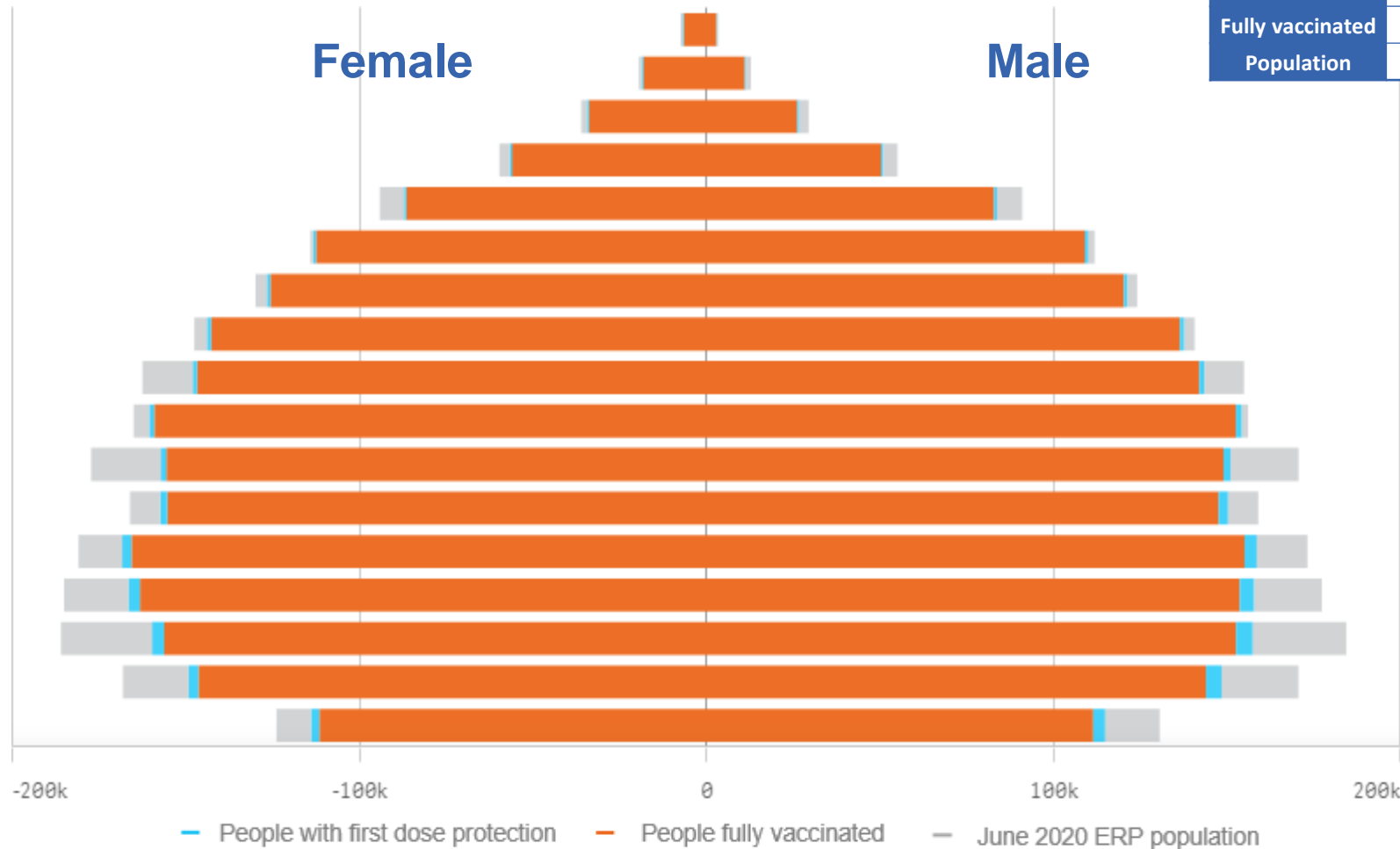


*Administration state breakdown indicates state in which a vaccine was administered and may differ to residential state. Recent weeks may be understated.

Data as at:
13 May 2022

Vaccinations by State or Territory of residence

Queensland



	16+	50+	70+			
At least one dose	93.79%	3,857,491	>95%	1,740,968	>95%	603,811
Fully vaccinated	92.24%	3,793,765	>95%	1,722,712	>95%	596,362
Population	4,112,707		1,758,855		577,767	

Age	At least one dose	Fully vaccinated
95+	>95%	>95%
90-94	>95%	>95%
85-89	>95%	>95%
80-84	>95%	>95%
75-79	>95%	>95%
70-74	>95%	>95%
65-69	>95%	>95%
60-64	>95%	>95%
55-59	91.90%	91.01%
50-54	>95%	>95%
45-49	88.68%	87.60%
40-44	94.77%	93.25%
35-39	92.50%	90.69%
30-34	89.81%	87.65%
25-29	86.02%	83.65%
20-24	88.14%	85.86%
16-19	90.00%	87.65%

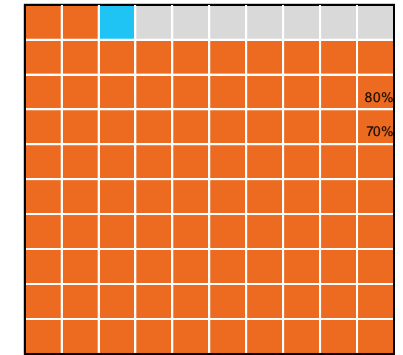
Vaccinations by State – Queensland

Data as at:
13 May 2022

Past 7 days

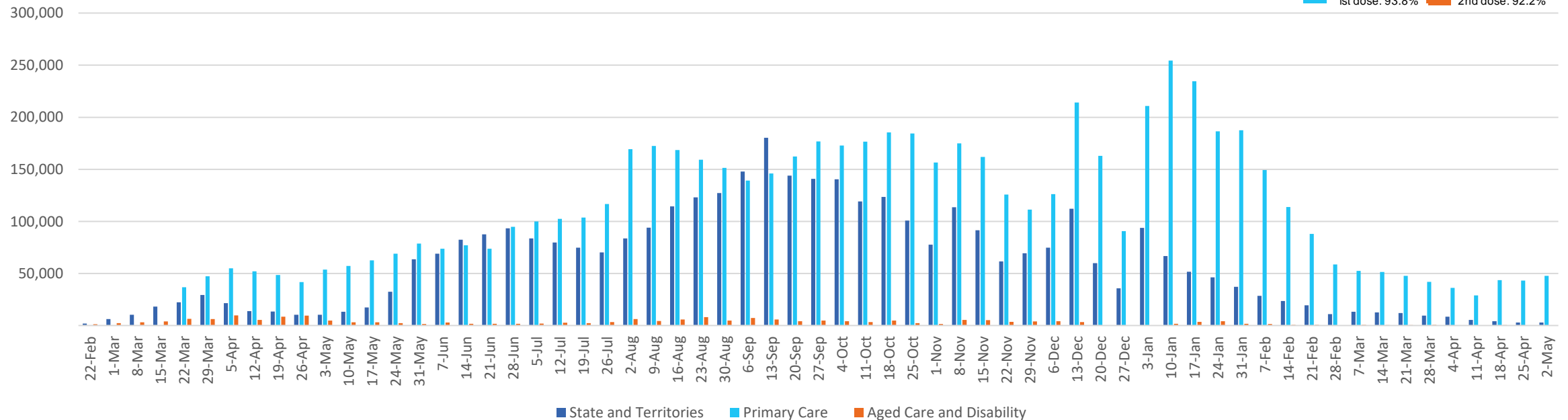
	07/05/2022	08/05/2022	09/05/2022	10/05/2022	11/05/2022	12/05/2022	13/05/2022	7 day total
State and Territory	446	77	409	664	621	498	558	3,273
Aged Care and Disability	72	10	27	70	182	156	84	601
Primary Care	2,649	1,081	10,611	12,222	12,051	12,403	10,058	61,075
Total (rounded)	3 K	1 K	11 K	13 K	13 K	13 K	11 K	65 K

Eligible population by % coverage



1st dose: 93.8% 2nd dose: 92.2%

Doses administered by channel

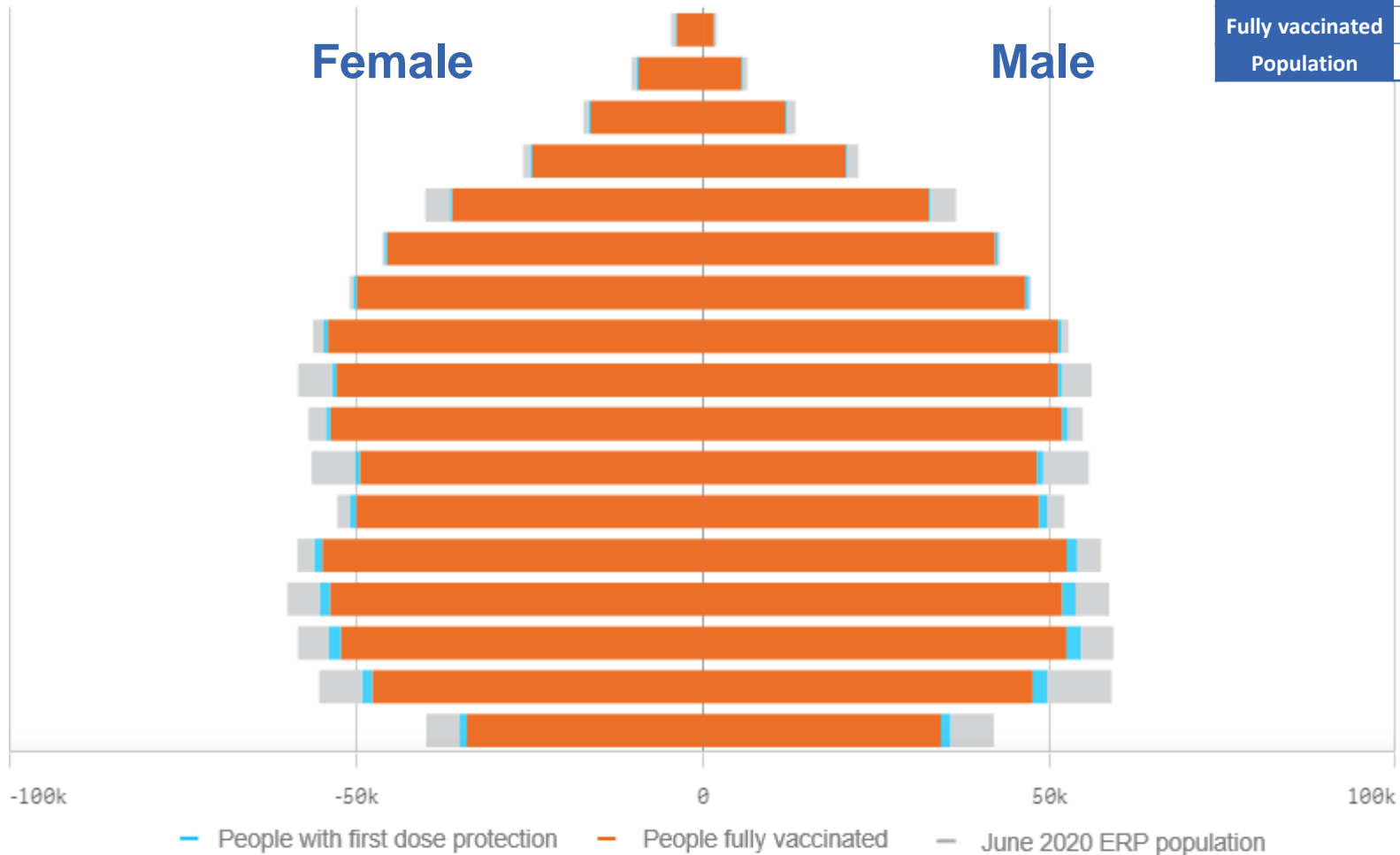


*Administration state breakdown indicates state in which a vaccine was administered and may differ to residential state. Recent weeks may be understated.

Data as at:
13 May 2022

Vaccinations by State or Territory of residence

South Australia



	16+		50+		70+	
At least one dose	>95%	1,374,055	>95%	671,617	>95%	254,296
Fully vaccinated	93.36%	1,344,715	>95%	663,021	>95%	250,660
Population	1,440,400		674,384		240,514	

Age	At least one dose	Fully vaccinated
95+	>95%	>95%
90-94	>95%	>95%
85-89	>95%	>95%
80-84	>95%	>95%
75-79	>95%	>95%
70-74	>95%	>95%
65-69	>95%	>95%
60-64	>95%	>95%
55-59	92.18%	91.06%
50-54	>95%	94.58%
45-49	88.68%	87.22%
40-44	>95%	94.14%
35-39	>95%	92.95%
30-34	92.77%	89.79%
25-29	93.49%	89.96%
20-24	87.42%	84.03%
16-19	86.69%	83.60%

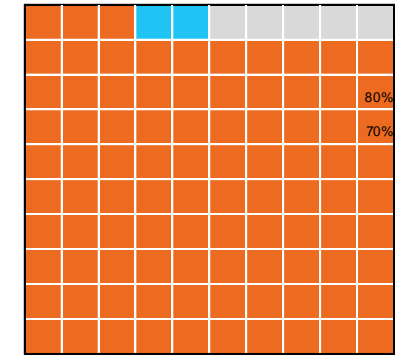
Vaccinations by State – South Australia

Data as at:
13 May 2022

Past 7 days

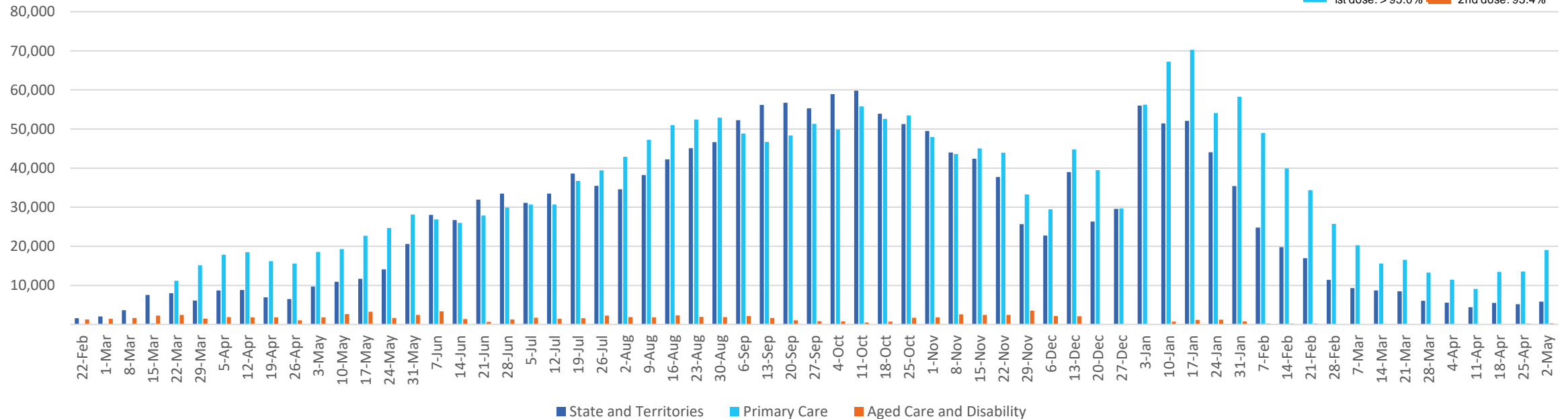
	07/05/2022	08/05/2022	09/05/2022	10/05/2022	11/05/2022	12/05/2022	13/05/2022	7 day total
State and Territory	822	313	1,272	890	1,321	1,320	1,147	7,085
Aged Care and Disability	25	<10	21	<10	<10	39	106	198
Primary Care	1,050	370	3,725	4,480	4,734	4,159	4,132	22,650
Total (rounded)	2 K	1 K	5 K	5 K	6 K	6 K	5 K	30 K

Eligible population by % coverage



1st dose: > 95.0% 2nd dose: 93.4%

Doses administered by channel

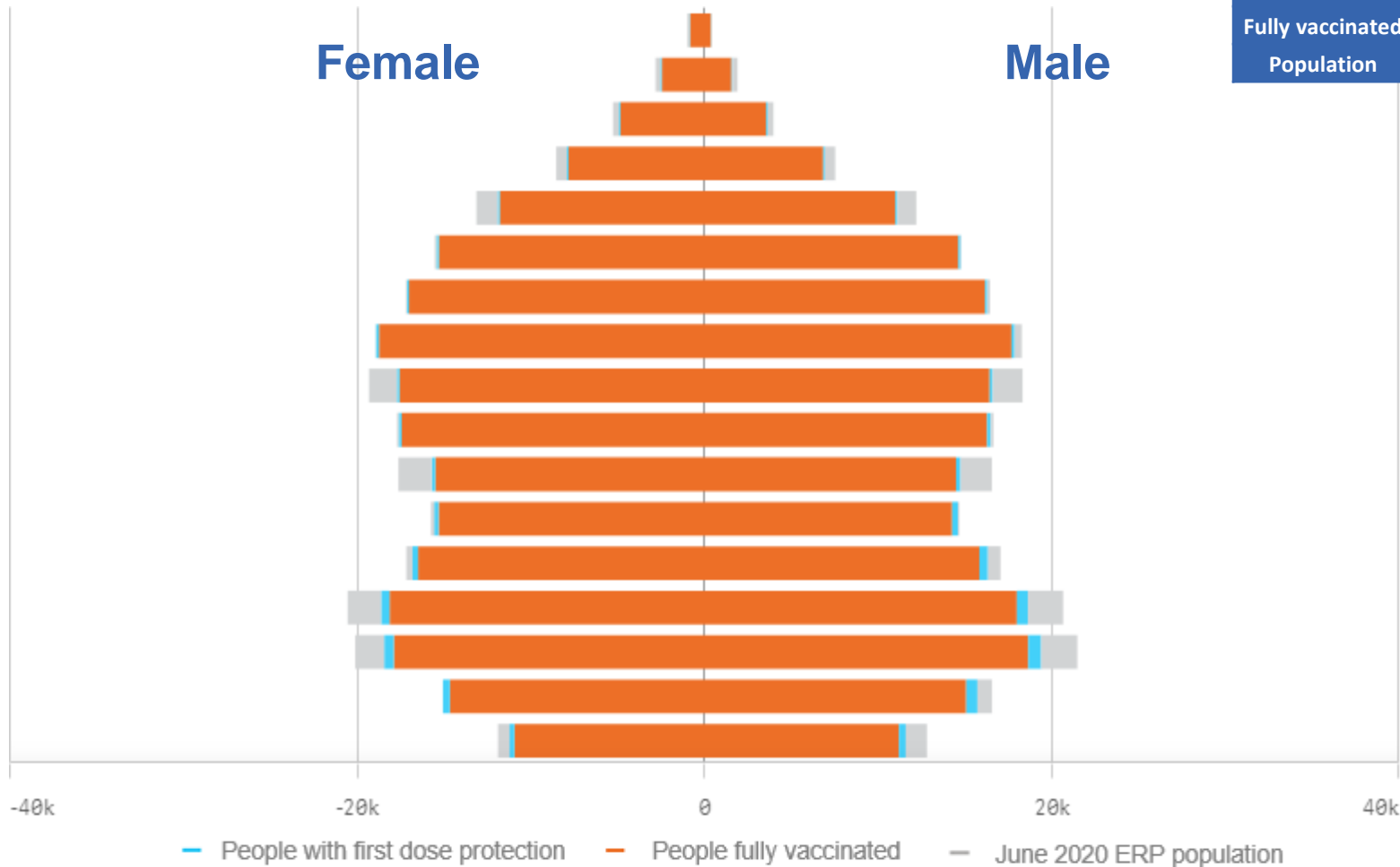


*Administration state breakdown indicates state in which a vaccine was administered and may differ to residential state. Recent weeks may be understated.

Data as at:
13 May 2022

Vaccinations by State or Territory of residence

Tasmania



	16+		50+		70+	
At least one dose	>95%	444,668	>95%	220,961	>95%	82,156
Fully vaccinated	>95%	435,591	>95%	218,497	>95%	81,052
Population	440,172		220,036		77,155	

Age	At least one dose	Fully vaccinated
95+	>95%	>95%
90-94	>95%	>95%
85-89	>95%	>95%
80-84	>95%	>95%
75-79	>95%	>95%
70-74	>95%	>95%
65-69	>95%	>95%
60-64	>95%	>95%
55-59	91.24%	90.34%
50-54	>95%	>95%
45-49	89.27%	87.82%
40-44	>95%	>95%
35-39	>95%	>95%
30-34	>95%	>95%
25-29	>95%	>95%
20-24	>95%	94.27%
16-19	92.45%	89.69%

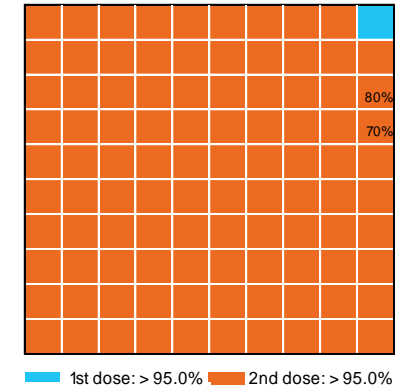
Vaccinations by State – Tasmania

Data as at:
13 May 2022

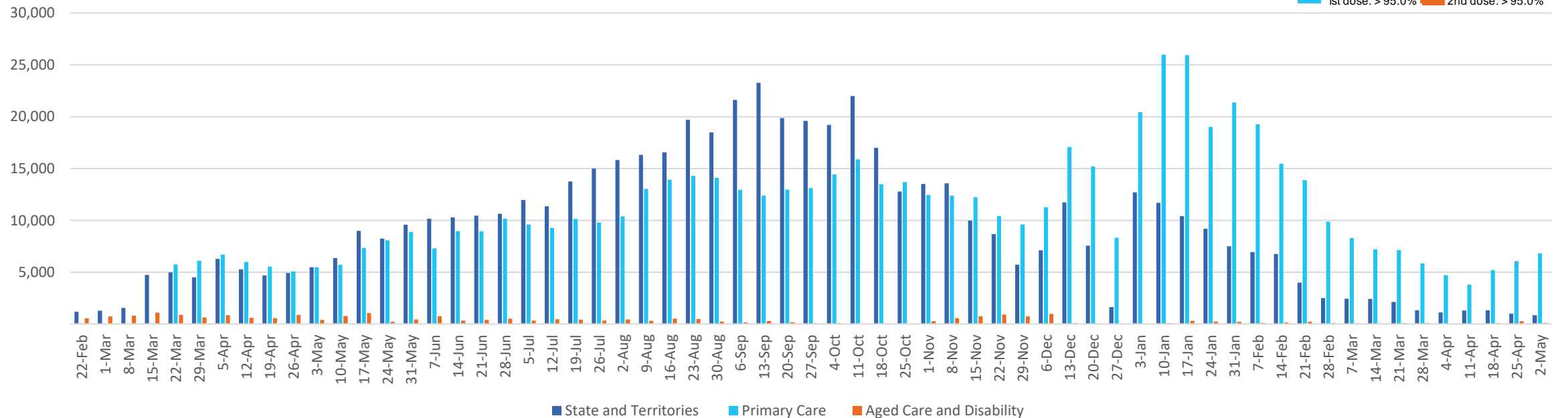
Past 7 days

	07/05/2022	08/05/2022	09/05/2022	10/05/2022	11/05/2022	12/05/2022	13/05/2022	7 day total
State and Territory	143	<10	93	308	261	227	200	1,232
Aged Care and Disability	35	<10	<10	53	65	<10	<10	154
Primary Care	275	61	1,422	1,562	1,509	1,599	1,361	7,789
Total (rounded)	0 K	0 K	2 K	2 K	2 K	2 K	2 K	9 K

Eligible population by % coverage



Doses administered by channel

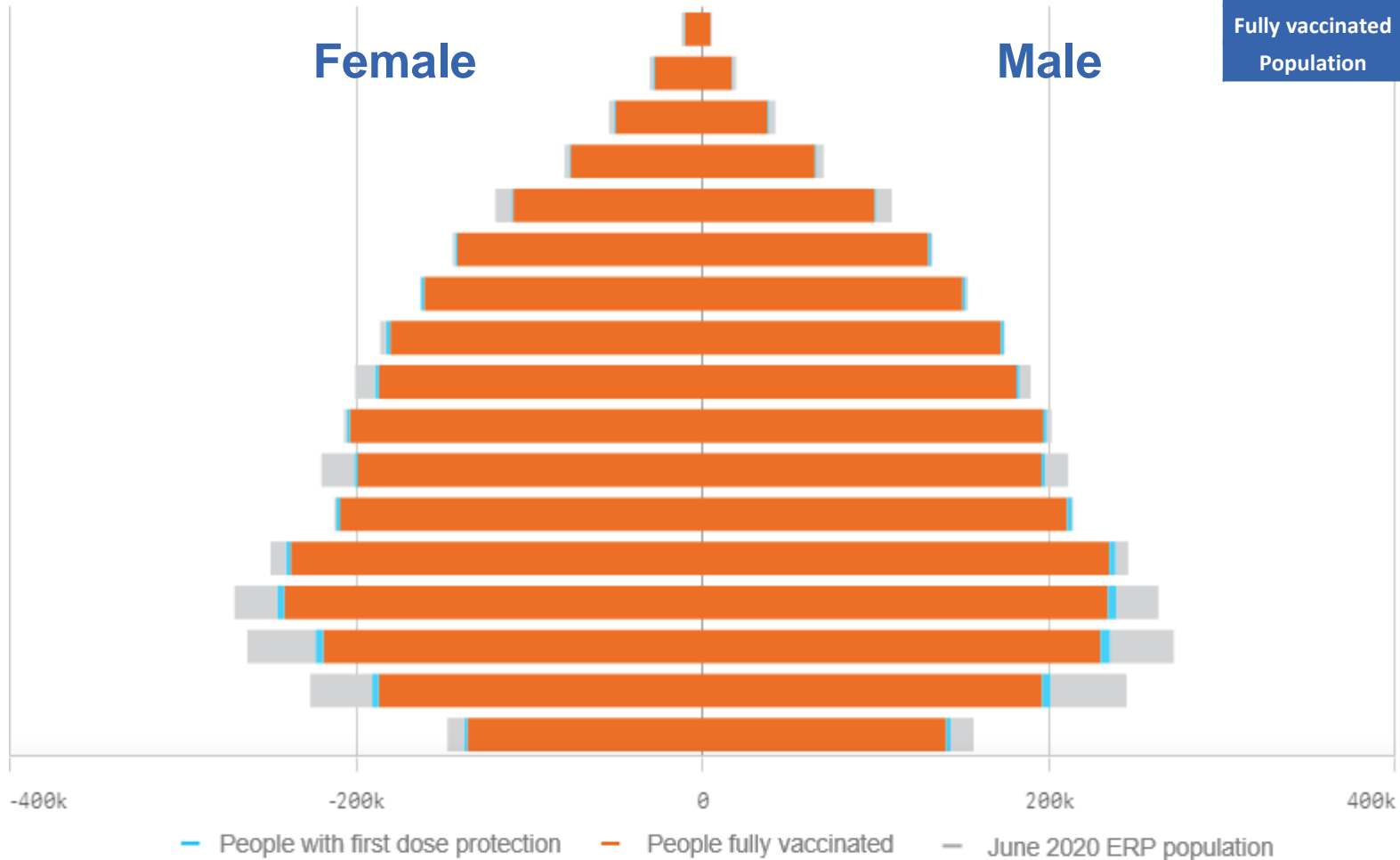


*Administration state breakdown indicates state in which a vaccine was administered and may differ to residential state. Recent weeks may be understated.

Data as at:
13 May 2022

Vaccinations by State or Territory of residence

Victoria



	16+		50+		70+	
At least one dose	>95%	5,156,855	>95%	2,231,327	>95%	781,154
Fully vaccinated	93.95%	5,080,286	>95%	2,203,902	>95%	770,633
Population	5,407,574		2,211,211		743,519	

Age	At least one dose	Fully vaccinated
95+	>95%	>95%
90-94	>95%	>95%
85-89	>95%	>95%
80-84	>95%	>95%
75-79	>95%	>95%
70-74	>95%	>95%
65-69	>95%	>95%
60-64	>95%	>95%
55-59	>95%	94.42%
50-54	>95%	>95%
45-49	92.60%	91.65%
40-44	>95%	>95%
35-39	>95%	>95%
30-34	91.01%	89.31%
25-29	86.09%	84.10%
20-24	83.30%	81.41%
16-19	92.55%	91.06%

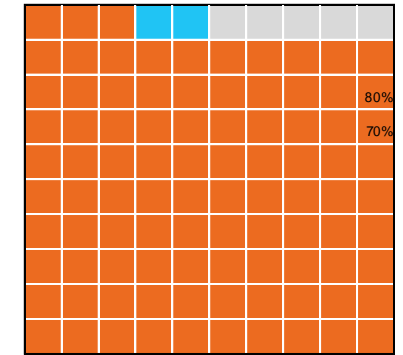
Vaccinations by State – Victoria

Data as at:
13 May 2022

Past 7 days

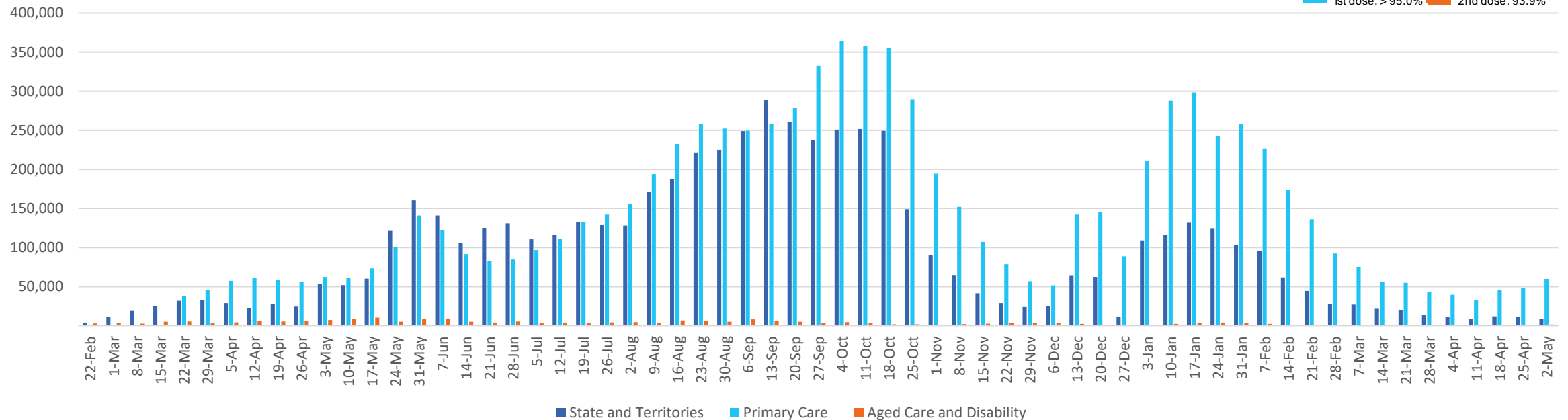
	07/05/2022	08/05/2022	09/05/2022	10/05/2022	11/05/2022	12/05/2022	13/05/2022	7 day total
State and Territory	1,721	534	1,698	1,822	1,642	1,921	1,708	11,046
Aged Care and Disability	58	101	63	223	151	503	366	1,465
Primary Care	3,882	1,021	11,854	13,261	13,752	14,143	12,897	70,810
Total (rounded)	6 K	2 K	14 K	15 K	16 K	17 K	15 K	83 K

Eligible population by % coverage



1st dose: > 95.0% 2nd dose: 93.9%

Doses administered by channel

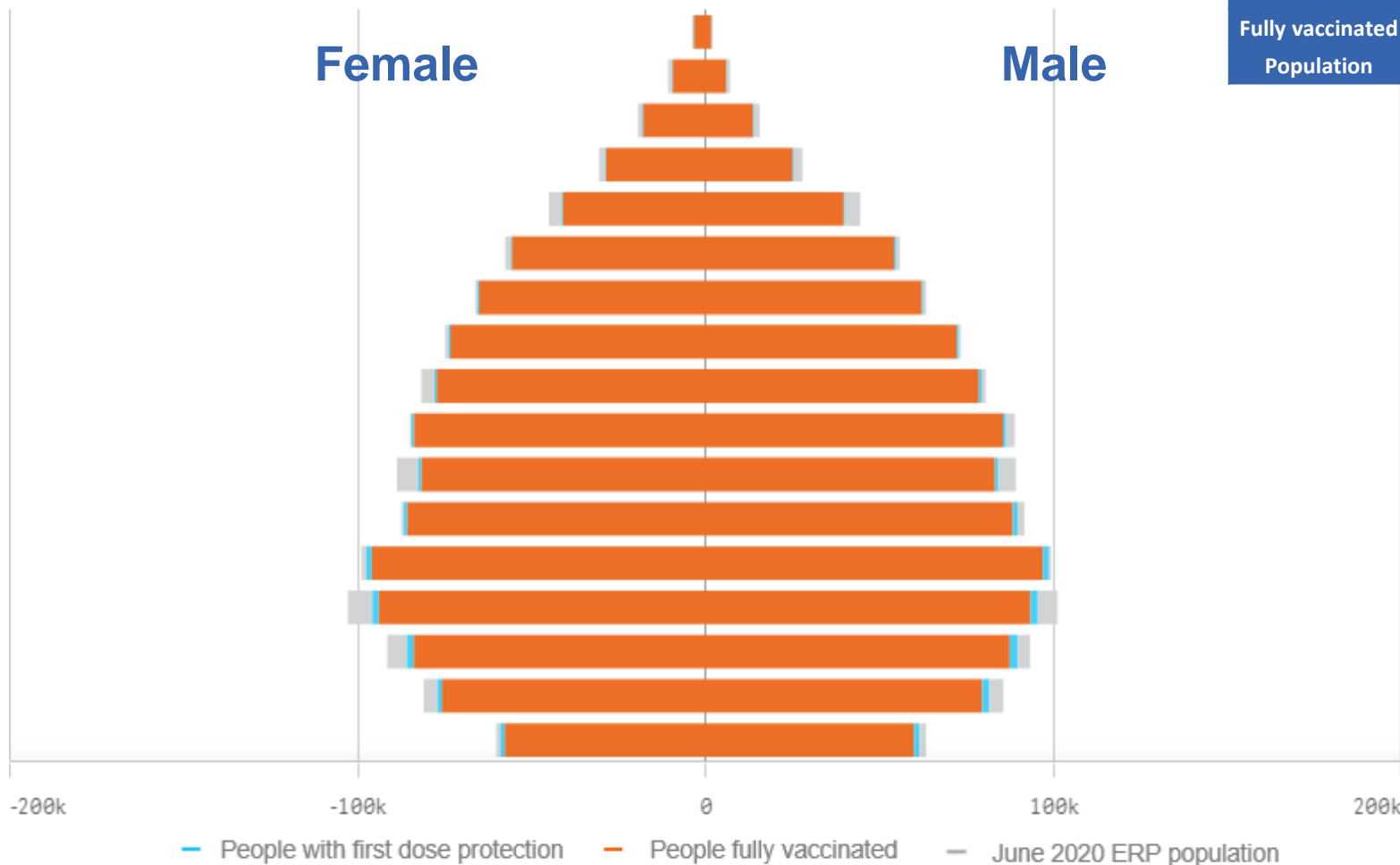


*Administration state breakdown indicates state in which a vaccine was administered and may differ to residential state. Recent weeks may be understated.

Data as at:
13 May 2022

Vaccinations by State or Territory of residence

Western Australia



	16+		50+		70+	
At least one dose	>95%	2,093,557	>95%	904,538	>95%	300,424
Fully vaccinated	>95%	2,062,338	>95%	895,681	>95%	296,881
Population	2,114,978		885,370		280,281	

Age	At least one dose	Fully vaccinated
95+	>95%	>95%
90-94	>95%	>95%
85-89	>95%	>95%
80-84	>95%	>95%
75-79	>95%	>95%
70-74	>95%	>95%
65-69	>95%	>95%
60-64	>95%	>95%
55-59	>95%	>95%
50-54	>95%	>95%
45-49	93.82%	92.78%
40-44	>95%	>95%
35-39	>95%	>95%
30-34	94.17%	92.16%
25-29	>95%	93.08%
20-24	>95%	93.43%
16-19	>95%	>95%

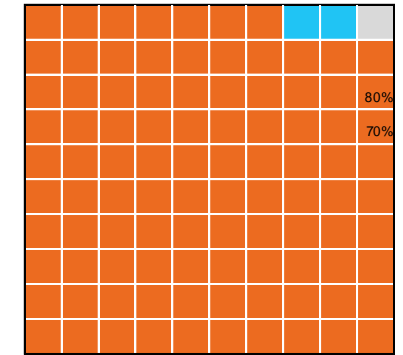
Vaccinations by State – Western Australia

Data as at:
13 May 2022

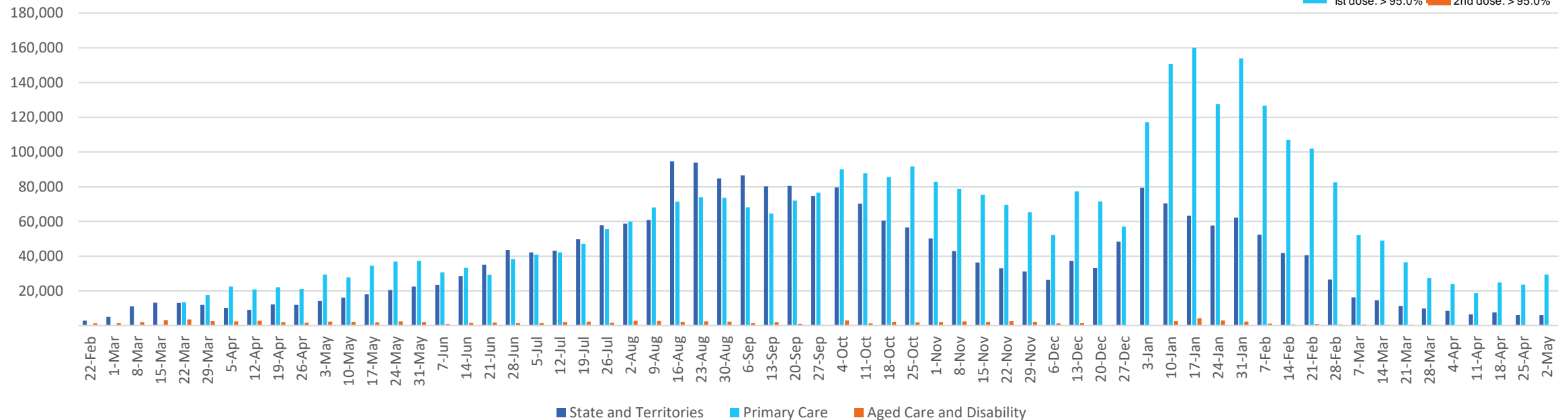
Past 7 days

	07/05/2022	08/05/2022	09/05/2022	10/05/2022	11/05/2022	12/05/2022	13/05/2022	7 day total
State and Territory	940	397	1,102	1,037	995	1,175	1,035	6,681
Aged Care and Disability	<10	<10	53	53	43	184	76	416
Primary Care	2,252	794	6,016	6,791	6,600	6,695	6,320	35,468
Total (rounded)	3 K	1 K	7 K	8 K	8 K	8 K	7 K	43 K

Eligible population by % coverage



Doses administered by channel



*Administration state breakdown indicates state in which a vaccine was administered and may differ to residential state. Recent weeks may be understated.