



Australian Government
Operation COVID Shield

COVID-19 Vaccine Roll-out

09 May 2022

Data as at:
08 May 2022

Total vaccine doses



58,075,297 total vaccine doses administered nationally as at 08 May

+6,588 recorded in the last 24 hours



20,032,530

people have had at least one dose

>95%

of people over the age of 16 have had at least one dose



19,700,155

people are fully vaccinated

>95%

of people over the age of 16 are fully vaccinated



13,499,721

people over the age of 16 who have received more than two doses

NSW
18,016,121
(+1,646 daily increase)

VIC
15,270,165
(+1,656 daily increase)

QLD
10,985,881
(+1,168 daily increase)

WA
6,387,962
(+1,194 daily increase)

TAS
1,309,674
(+61 daily increase)

SA
4,009,493
(+683 daily increase)

ACT
1,516,624
(+170 daily increase)

NT
579,377
(+10 daily increase)

*Administration state breakdown indicates state in which a vaccine was administered

**Overall dose count includes instances of more than three doses per person in a small number of cases.

Booster Vaccinations

Data as at:
08 May 2022



211,974

Indigenous people who have received three or more doses

53.0%

of eligible population (400,028)



159,533

Aged Care Residents who have received three or more doses##

90.8%

of eligible population (175,621)



184,321

NDIS participants

who have received three or more doses#

74.1%

of eligible population (248,000)

21,292

NDIS residents

who have received three or more doses#

88.3%

of eligible population (24,000)



13,499,721

total people who have received three or more doses

+2,227 daily increase

69.4% of eligible population (19,452,349)

	Number of People	Daily Increase	% of Eligible
NSW	4,123,149	521	66.6%
VIC	3,612,244	569	71.5%
QLD	2,336,068	413	62.7%
WA	1,654,649	484	83.6%
SA	956,695	185	72.6%
TAS	308,427	15	72.1%
ACT	267,495	26	77.5%
NT	126,309	<10	76.1%

114,685

doses administered to persons residing in other territories or with missing residential information

*People may belong to multiple groups and could be represented in the above breakdowns multiple times.

NDIS participants data as at 04 May 2022.

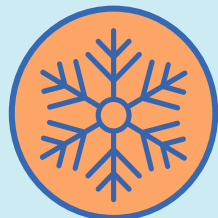
Aged Care Residents data as at 06 May 2022.

Source: Australian Immunisation Register

Winter / Fourth Doses

Data as at:
08 May 2022
Updated weekly

Australia's COVID-19
Vaccine Roadmap



706,824 total people (16+) who have received four or more doses

+205,900 weekly increase

	Number of People 16+	Weekly Increase
ACT	17,594	4,202
NSW	237,153	66,167
NT	3,709	736
QLD	134,109	37,573
SA	53,576	18,291
TAS	19,557	5,537
VIC	177,735	52,084
WA	60,027	20,401

3,364 doses administered to persons
residing in other territories or with
missing residential information

Source: Australian Immunisation Register

Data as at:
08 May 2022

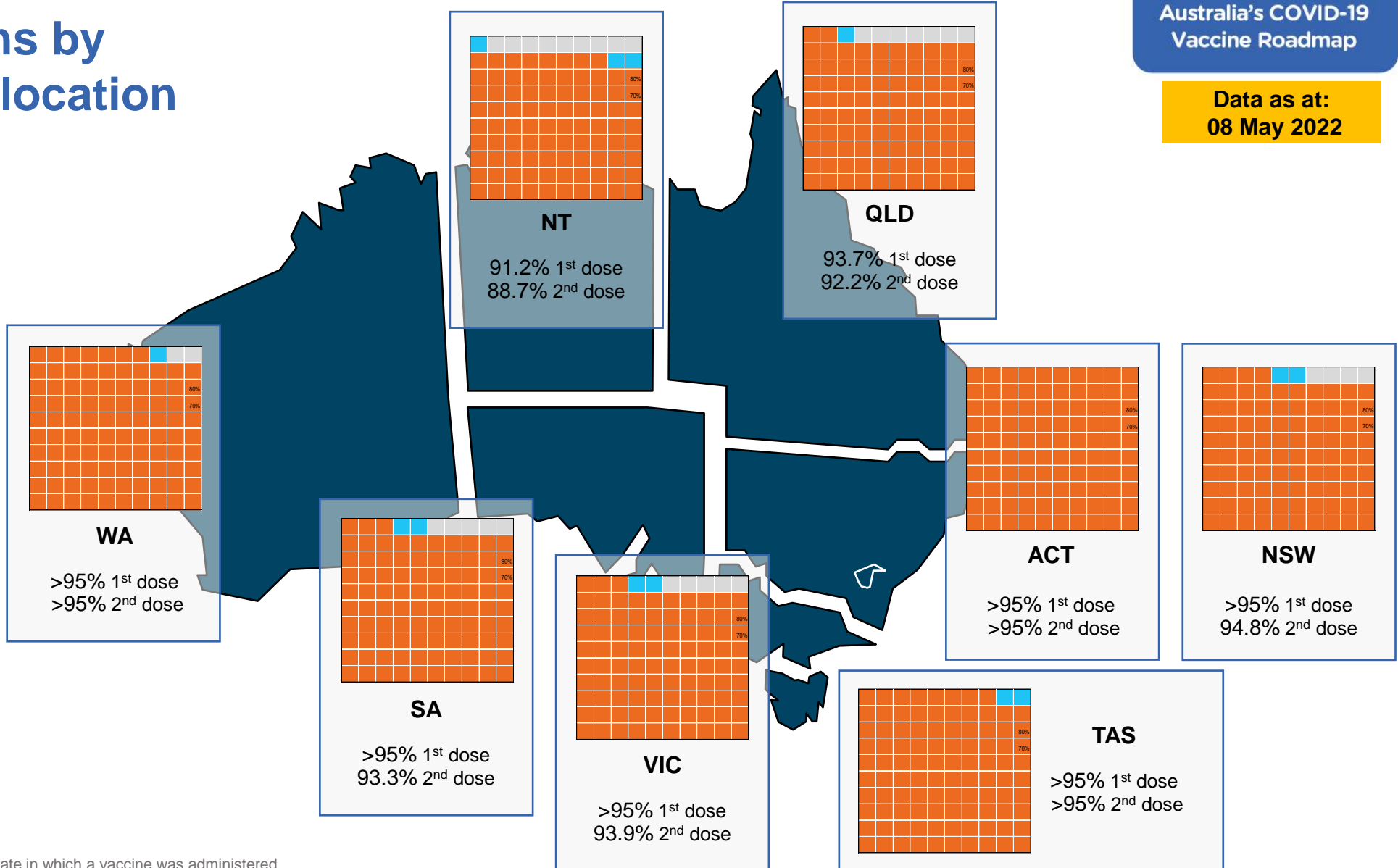
Vaccinations by residential location

First doses

Age	Today	4 weeks ago	8 weeks ago
16+	>95%	>95%	>95%
50+	>95%	>95%	>95%
70+	>95%	>95%	>95%

Fully vaccinated

Age	Today	4 weeks ago	8 weeks ago
16+	>95%	>95%	>95%
50+	>95%	>95%	>95%
70+	>95%	>95%	>95%



*Residential state may differ from the state in which a vaccine was administered

Commonwealth and Jurisdiction vaccine doses administered

Data as at:
08 May 2022



58,075,297 total vaccine doses administered nationally as at 08 May

+ 6,588 recorded in the last 24 hours

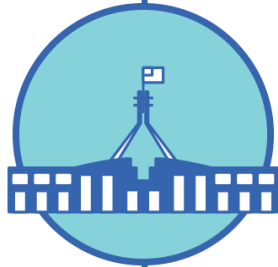


21,069,123

doses administered by state and territory facilities

+ 1,737

recorded in the last 24 hours



37,006,174

doses administered by commonwealth facilities

+ 4,851

recorded in the last 24 hours

35,726,585 total vaccine doses administered in primary care settings

1,279,589 total vaccine doses administered in aged care and disability settings

NSW	Jurisdictions	Commonwealth
Cumulative	5,107,621	12,908,500
Daily increase	338	1,308

VIC	Jurisdictions	Commonwealth
Cumulative	6,069,771	9,200,394
Daily increase	534	1,122

QLD	Jurisdictions	Commonwealth
Cumulative	3,841,235	7,144,646
Daily increase	77	1,091

WA	Jurisdictions	Commonwealth
Cumulative	2,498,521	3,889,441
Daily increase	397	797

TAS	Jurisdictions	Commonwealth
Cumulative	620,865	688,809
Daily increase	<10	61

SA	Jurisdictions	Commonwealth
Cumulative	1,808,124	2,201,369
Daily increase	313	370

ACT	Jurisdictions	Commonwealth
Cumulative	781,521	735,103
Daily increase	70	100

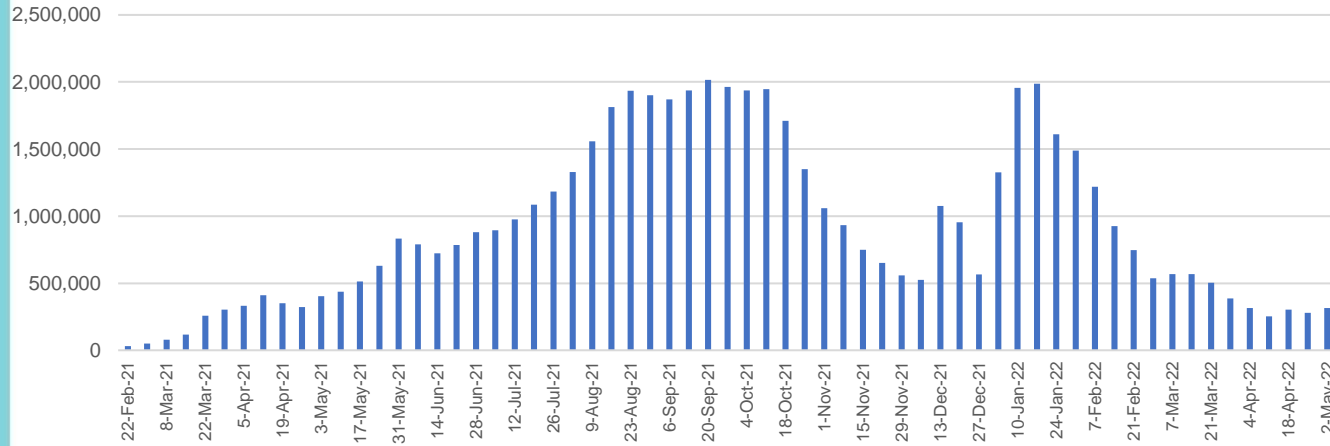
NT	Jurisdictions	Commonwealth
Cumulative	341,465	237,912
Daily increase	<10	<10

Vaccine milestone charts

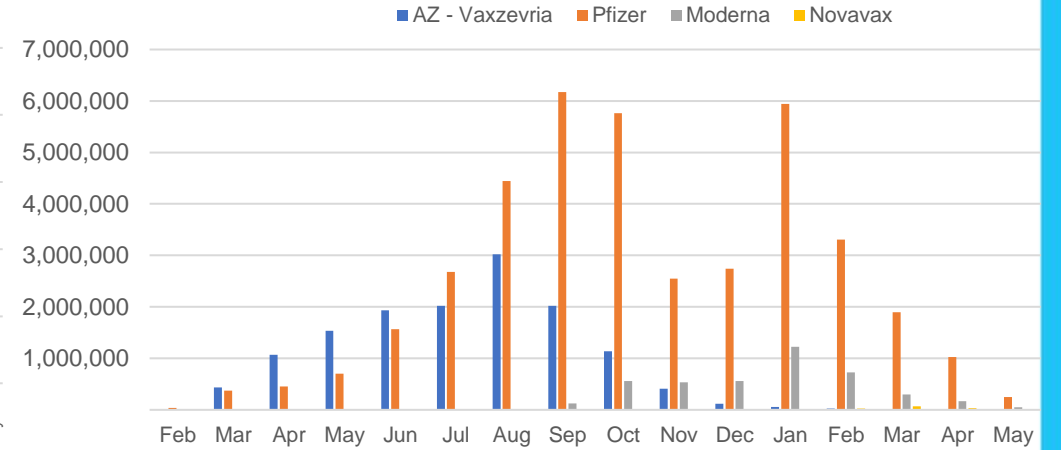
Data as at:
08 May 2022

Australia's COVID-19
Vaccine Roadmap

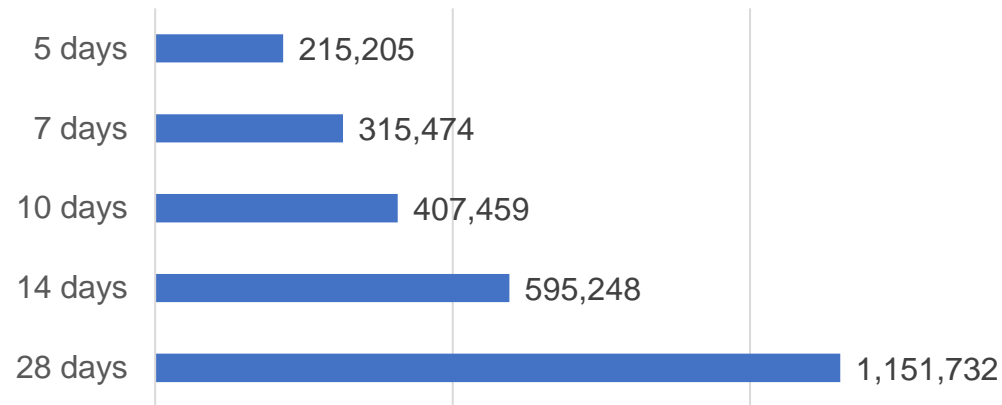
Doses Administered by Week



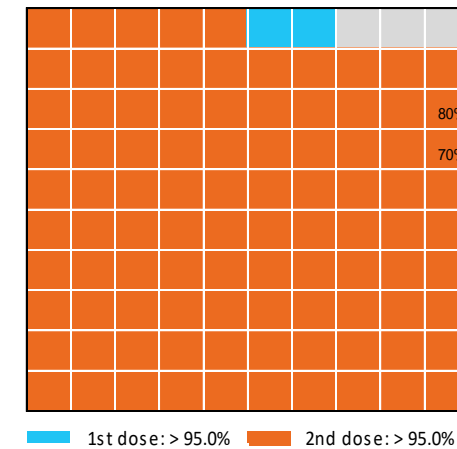
Doses by administration month and vaccine type



Doses Reported



Eligible population percentage coverage



*Each square represents 1% of the national population. Squares are filled as milestones are achieved.

*Sourced from the Australian Immunisation Register.

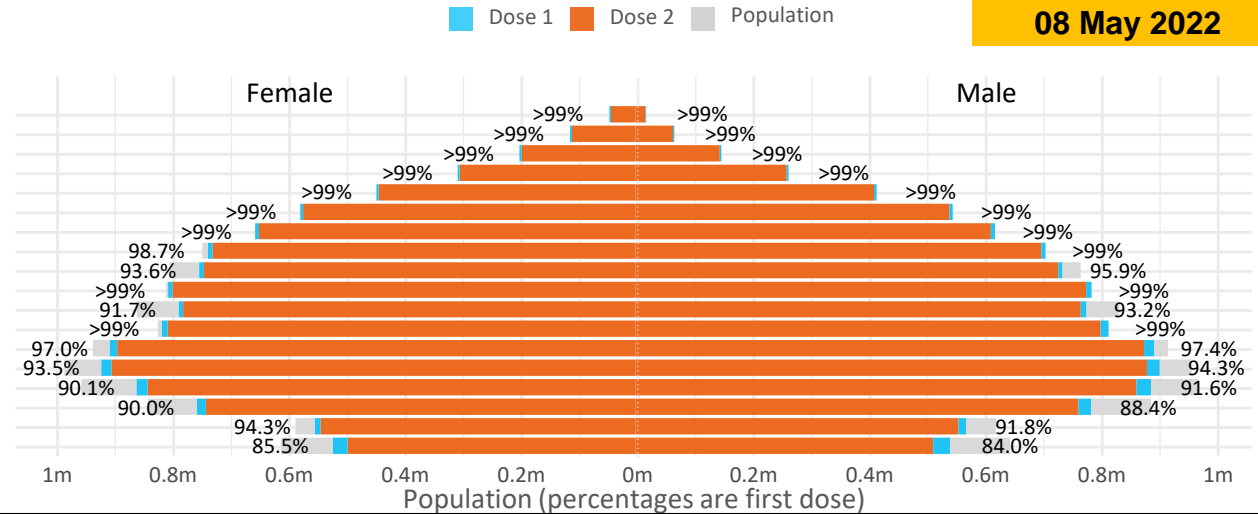
Doses by age and sex

First and second doses by age and sex

	16+	50+	12-15	5-11
Dose 1	97.15% (20,032,530 doses / 20,619,959 people)	>99% (8,870,713 doses / 8,749,703 people)	84.76% (1,054,436 doses / 1,243,990 people)	52.81% (1,202,214 doses / 2,276,638 people)
Dose 2	95.54% (19,700,155 doses / 20,619,959 people)	>99% (8,764,336 doses / 8,749,703 people)	80.36% (999,717 doses / 1,243,990 people)	37.54% (854,665 doses / 2,276,638 people)

Data as at: 08 May 2022

Age	Dose 1	Dose 2
95+	62,599 (>99%)	59,207 (>99%)
90-94	178,053 (>99%)	172,434 (>99%)
85-89	345,273 (>99%)	338,312 (>99%)
80-84	565,479 (>99%)	558,204 (>99%)
75-79	854,505 (>99%)	846,148 (>99%)
70-74	1,115,166 (>99%)	1,104,133 (>99%)
65-69	1,264,616 (>99%)	1,250,393 (>99%)
60-64	1,431,668 (>99%)	1,415,550 (98.5%)
55-59	1,475,611 (94.9%)	1,459,141 (93.8%)
50-54	1,577,743 (>99%)	1,560,814 (>99%)
45-49	1,551,499 (92.5%)	1,533,023 (91.4%)
40-44	1,618,257 (>99%)	1,594,221 (98.4%)
35-39	1,788,521 (97.5%)	1,756,660 (95.7%)
30-34	1,814,967 (94.3%)	1,773,556 (92.2%)
25-29	1,742,568 (91.4%)	1,695,390 (88.9%)
20-24	1,532,856 (89.5%)	1,493,701 (87.2%)
16-19	1,113,149 (93.1%)	1,089,268 (91.1%)
12-15	1,054,436 (84.8%)	999,717 (80.4%)

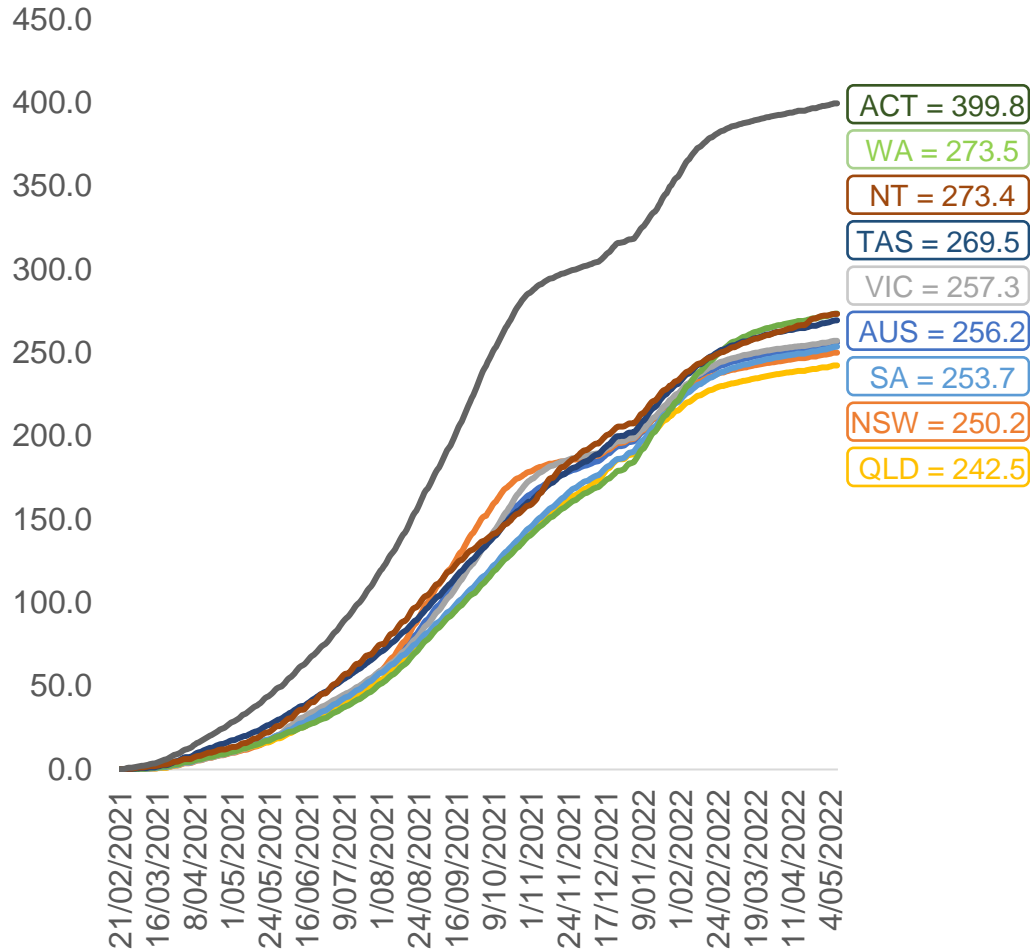


	AUS	ACT	NSW	NT	QLD	SA	TAS	VIC	WA
16 and over - dose 1	20,032,530	352,286	6,320,213	173,802	3,854,956	1,373,320	444,532	5,154,646	2,092,177
16 and over - dose 2	19,700,155	346,761	6,224,608	169,062	3,791,044	1,343,950	435,415	5,078,235	2,060,823
16 and over - population	20,619,959*	344,037	6,565,651	190,571	4,112,707	1,440,400	440,172	5,407,574	2,114,978
16 and over % with dose 1	97.15%	>99%	96.26%	91.20%	93.73%	95.34%	>99%	95.32%	98.92%
16 and over % with dose 2	95.54%	>99%	94.81%	88.71%	92.18%	93.30%	98.92%	93.91%	97.44%
5 to 11 - dose 1	1,202,214	31,939	358,499	13,237	208,946	84,328	28,756	327,003	141,587
5 to 11 - dose 2	854,665	26,332	258,608	8,078	143,812	60,539	22,633	234,173	96,067
5 to 11 - population	2,276,638	39,789	716,460	24,750	478,731	148,816	45,033	578,499	244,154
5 to 11 % with dose 1	52.81%	80.27%	50.04%	53.48%	43.65%	56.67%	63.86%	56.53%	57.99%
5 to 11 % with dose 2	37.54%	66.18%	36.10%	32.64%	30.04%	40.68%	50.26%	40.48%	39.35%
12 to 15 - dose 1	1,054,436	20,086	324,332	10,831	206,824	68,419	22,941	275,415	115,919
12 to 15 - dose 2	999,717	19,551	310,173	9,772	193,815	64,831	21,855	263,840	107,444
12 to 15 - population	1,243,990	19,693	390,330	13,060	270,146	82,747	26,308	308,611	132,869
12 to 15 % with dose 1	84.76%	>99%	83.09%	82.93%	76.56%	82.68%	87.20%	89.24%	87.24%
12 to 15 % with dose 2	80.36%	>99%	79.46%	74.82%	71.74%	78.35%	83.07%	85.49%	80.86%

*National population will not equal sum of listed jurisdictions due to a small number of people counted in national population residing in some 'other' territories. Sum of state doses will not add to national total as some records are unable to be geocoded to a State or Territory. Doses sourced from Australian Immunisation Register, population from ABS ERP June 2020

Vaccinations by location

Cumulative total doses administered vs eligible state populations*

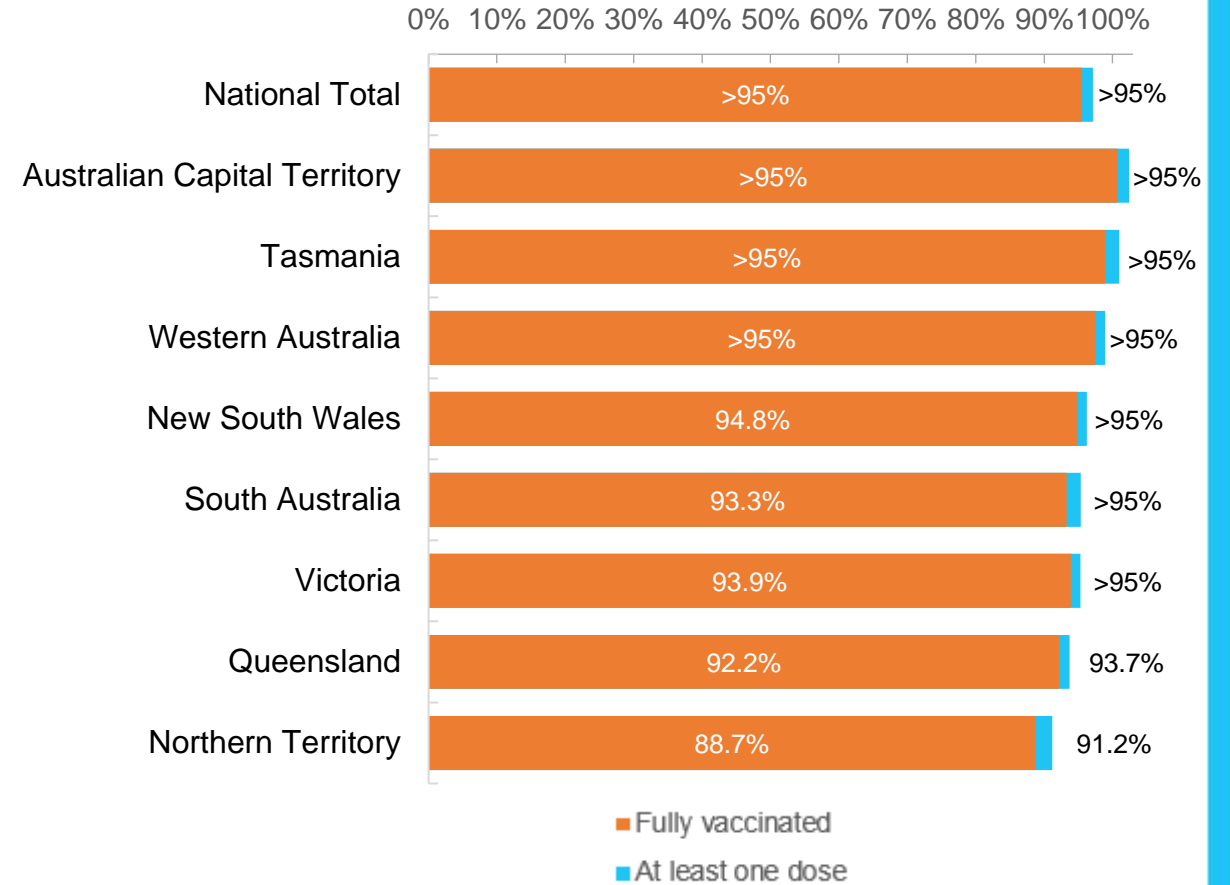


*Not an indication of percentage vaccinated, numbers will exceed 100 due to multiple doses required per person of the population. All doses are included for those aged 12 and above, and are based on vaccination provider location.

Data as at:
08 May 2022

Australia's COVID-19
Vaccine Roadmap

First and Second Doses by residential location



Aboriginal and Torres Strait Islander peoples

Number of people vaccinated

Data as at:
03 May 2022
Updated weekly

Australia's COVID-19
Vaccine Roadmap



439,739

people over the age of 16
have had at least one dose

84.5%

of people over the age of 16
have had at least one dose



420,457

people over the age of 16
are fully vaccinated

80.8%

of people over the age of 16 are
fully vaccinated



People aged 12 – 15 years

48,551

42,734

68.3%

60.1%

At least one dose

Fully vaccinated

178 Aboriginal community controlled health services (ACCHS)

0#	50	27	44	12	3	21	21
ACT	NSW	NT	QLD	SA	TAS	VIC	WA

Medicare Address State ^{##}	Individuals Dose 1	Individuals Dose 1 %	Individuals Dose 2	Individuals Dose 2 %
Australian Capital Territory	4,791	90.9%	4,672	88.7%
New South Wales	135,024	86.7%	131,916	84.8%
Northern Territory	41,579	89.5%	39,405	84.8%
Queensland	115,558	81.4%	110,018	77.5%
South Australia	19,896	80.0%	18,461	74.3%
Tasmania	13,892	88.6%	13,485	86.0%
Victoria	35,452	89.8%	34,662	87.8%
Western Australia	53,624	86.3%	49,606	79.8%
Unknown/Other Territories	19,923	68.8%	18,232	62.9%
Totals	439,739	84.5%	420,457	80.8%

Source: Australian Immunisation Register

*Identifying as Aboriginal and Torres Strait Islander is optional and the estimated population may be under reported.

**Includes all Aboriginal and Torres Strait Islander peoples who have received a vaccination, not limited to those administered in an ACCHS setting

#ACCHS in the ACT are currently operating as a Commonwealth Vaccine Clinics so not included to avoid double counting

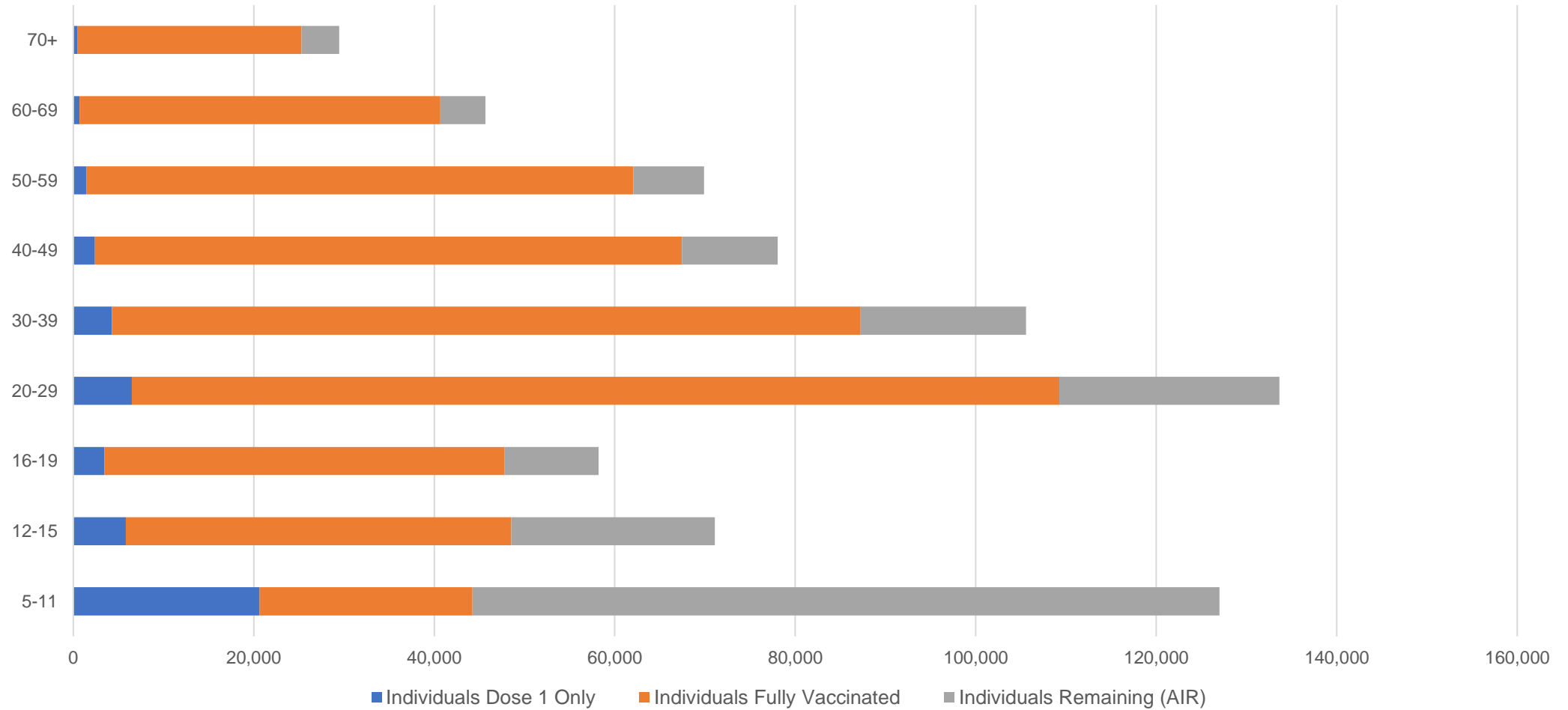
##The above table includes all identified Aboriginal and Torres Strait Islander people who are aged 16 and above by their state of residence.

Aboriginal and Torres Strait Islander peoples

Number of people vaccinated by age

Data as at:
03 May 2022
Updated weekly

Australia's COVID-19
Vaccine Roadmap



Source: Australian Immunisation Register

Commonwealth primary care

Data as at:
08 May 2022

Australia's COVID-19
Vaccine Roadmap



Primary care vaccine administration sites

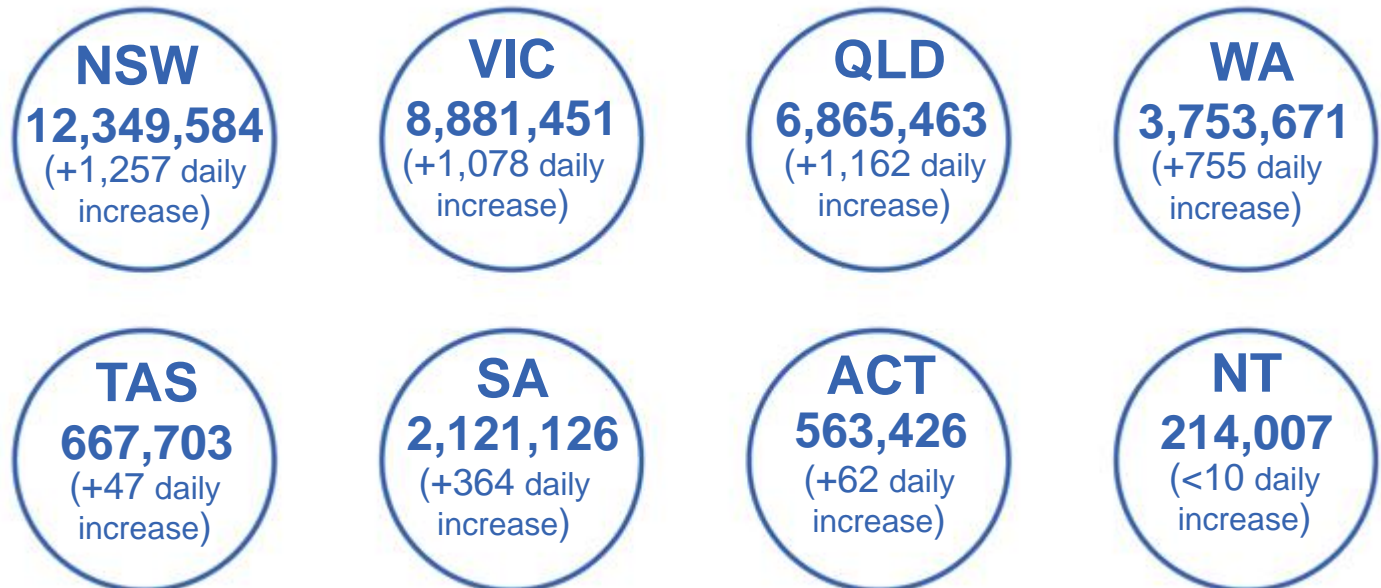
5,803	128	178	3,599
GPs	CVCs	ACCHS	Pharmacies



35,726,585 total vaccine doses administered
primary care settings as at 08 May
+ 4,736 recorded in the last 24 hours

Primary care vaccinations by provider type

	Doses administered	Daily increase	7 day increase
General Practice* includes other Commonwealth	28,718,125	3,011	190,327
Pharmacy	7,008,460	1,725	80,764



310,154 doses administered to persons residing in other territories or with missing residential information

*General practice includes Commonwealth Vaccination Clinics, Aboriginal Community Health Centres, Royal Flying Doctor Service and other Commonwealth vaccination facilities

Source: Australian Immunisation Register

Data as at:
08 May 2022

Commonwealth aged care and disability doses administered



1,279,589 (+ 115 last 24 hours)

Total vaccine doses administered in aged care and disability facilities as at 08 May

Number of doses administered as part of the Commonwealth aged and disability care rollout

NSW
560,533
(<10 daily increase)

VIC
237,626
(+92 daily increase)

QLD
203,541
(+11 daily increase)

WA
108,570
(<10 daily increase)

TAS
23,223
(<10 daily increase)

SA
84,363
(<10 daily increase)

ACT
17,359
(<10 daily increase)

NT
7,537
(<10 daily increase)

36,837

doses administered to persons residing in other territories or with missing residential information

Source: Australian Immunisation Register

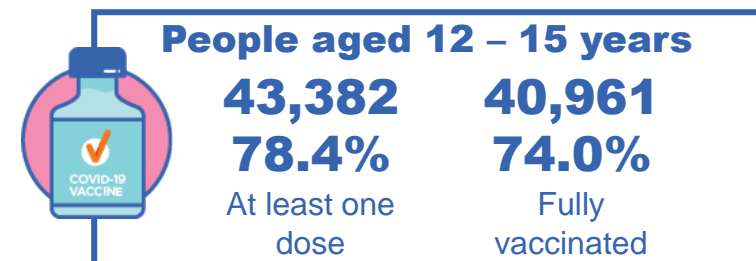
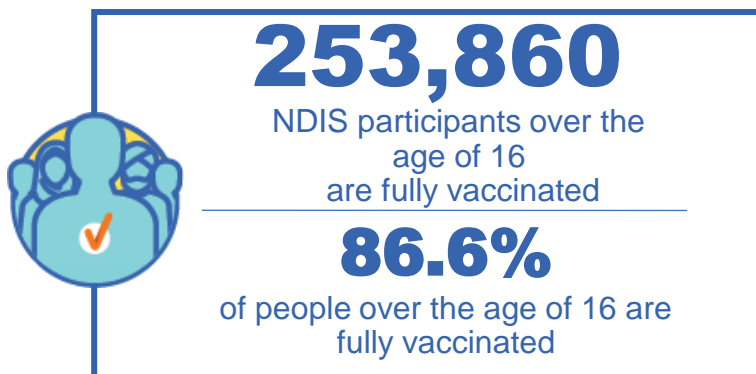
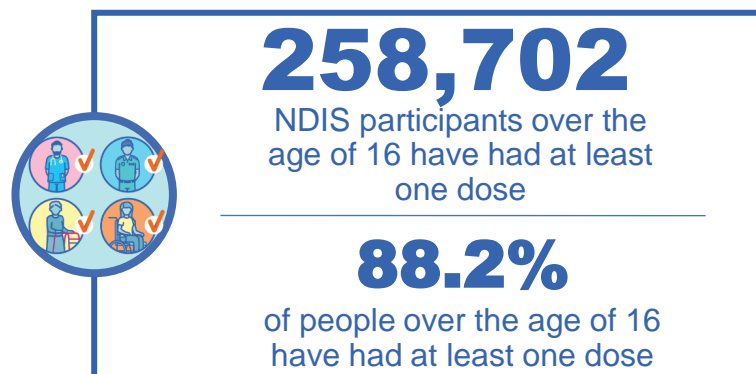
*Sourced from the Australian Immunisation Register. Includes all persons vaccinated at participating residential aged care, disability and related industry settings.

**State level breakdown indicates the residential location and may not align to the state in which the vaccination occurred.

National Disability Insurance Scheme (NDIS) reported vaccinations

Data as at:
05 May 2022
Updated weekly

Australia's COVID-19
Vaccine Roadmap



NDIS participant vaccinations

	People aged 16+ with at least one dose	People aged 16+ fully vaccinated	% People aged 16+ with at least one dose	% People aged 16+ fully vaccinated
ACT	4,887	4,821	90.1%	88.9%
NSW	79,401	78,110	88.5%	87.1%
NT	2,237	2,164	78.4%	75.8%
QLD	51,060	50,087	86.8%	85.1%
SA	21,131	20,611	86.1%	84.0%
TAS	6,475	6,321	88.1%	86.0%
VIC	68,808	67,594	89.4%	87.8%
WA	24,703	24,152	89.7%	87.7%
National	258,702	253,860	88.2%	86.6%

Source: Linkage between National Disability Insurance Agency data and the Australian Immunisation Register. Total NDIS participant numbers as at 28 February. Australian Immunisation Register data as at 4 May. Includes all participants regardless of residence type.

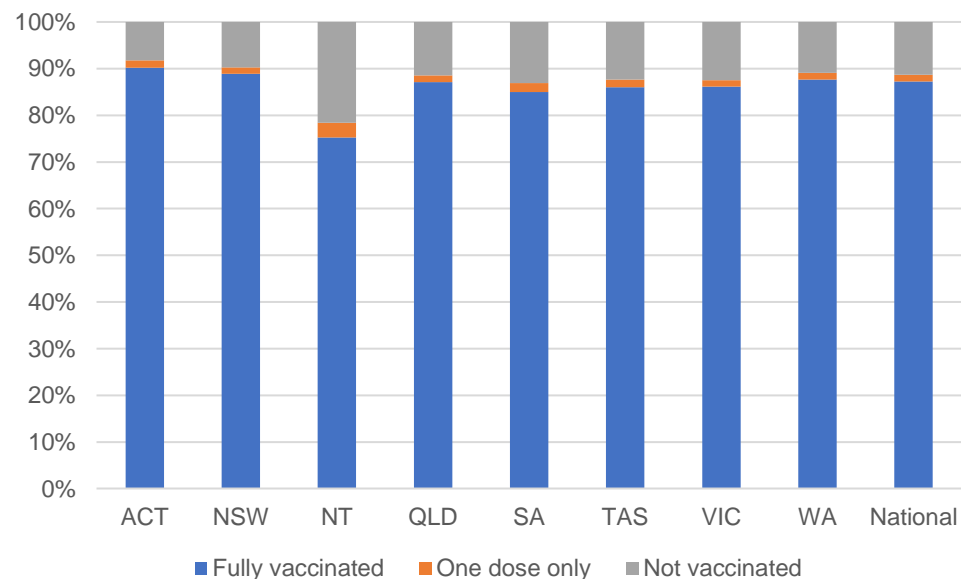
National Disability Insurance Scheme (NDIS) reported vaccinations

Data as at:
05 May 2022
Updated Weekly

Australia's COVID-19
Vaccine Roadmap

NATIONAL	Total people with at least one dose	People fully vaccinated	Total number of individuals in cohort	% People with at least one dose	% People fully vaccinated
NDIS participants living in disability accommodation	20,790	20,450	23,352	89.0%	87.6%

NDIS participants in disability and aged care accommodation



Source: Linkage between National Disability Insurance Agency data and the Australian Immunisation Register. Includes participants residing in disability accommodation only.

Source: Total NDIS participant numbers as at 28 February. Participant data as at 4 May. Australian Immunisation Register data as at 4 May. Worker data as at 4 May.

NDIS workforce vaccinations

	NDIS workers with at least one dose	NDIS workers fully vaccinated	% NDIS workers with at least one dose	% NDIS workers fully vaccinated
NSW	121,713	117,437	98.2%	94.8%
VIC	116,092	112,390	98.3%	95.2%
QLD	69,687	68,782	97.5%	96.3%
WA	32,669	31,051	97.8%	93.0%
SA	35,437	33,033	98.5%	91.8%
TAS	10,733	10,504	99.5%	97.4%
ACT	3,511	3,469	99.0%	97.8%
NT	3,442	3,293	99.4%	95.1%
TOTAL	393,284	379,959	98.2%	94.8%

Source: the NDIS Commission has established a requirement for registered NDIS providers who provide intensive disability support services to report on the vaccination status of workers they employ, or otherwise engage, to deliver NDIS-funded supports and services, and who are required to be vaccinated in accordance with in-force state and territory public health orders. The statistics reflect data reported to the NDIS Commission by registered NDIS providers and should be considered indicative and subject to change

Note: Some registered NDIS providers are yet to report on the vaccination status of their workforce. The NDIS Commission is working with those providers around reporting requirements.

Remaining workers not included include those exempt from vaccination requirements, workers whose vaccination status is not yet verified by the provider (such as workers on leave) and provider reporting anomalies.

Residential aged care vaccination rollout

Residential aged care facilities status

175,621

People fully vaccinated

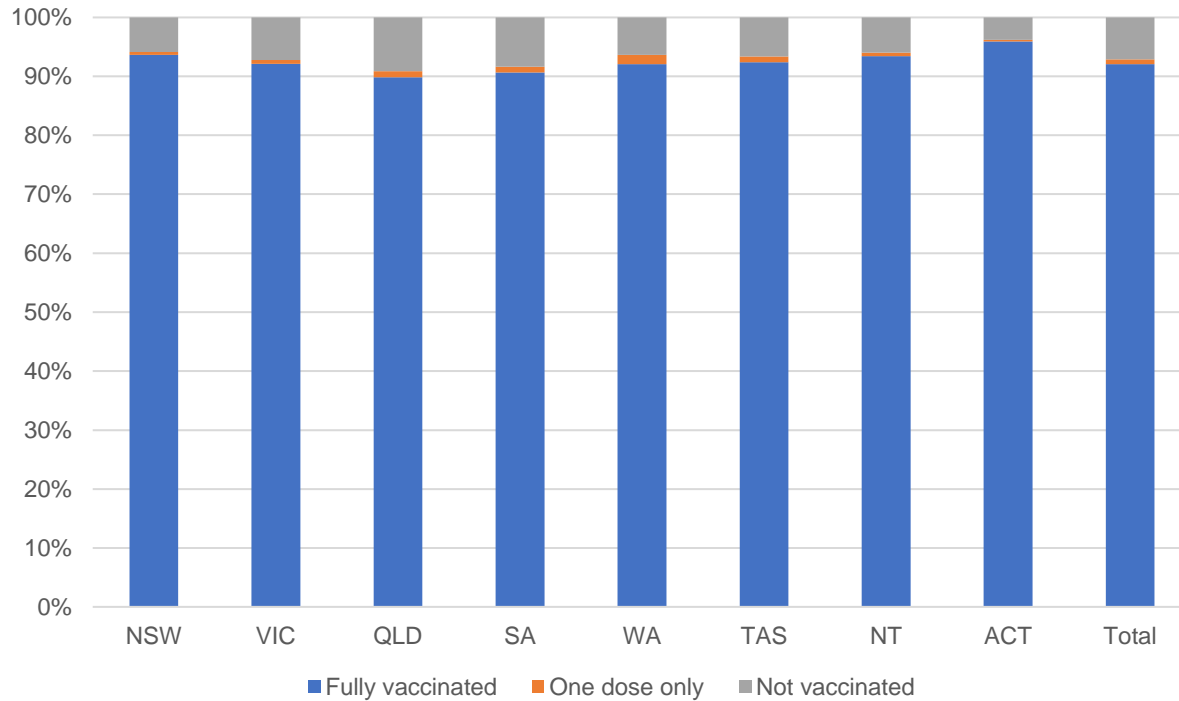
177,159

People with at least one dose

Australia's COVID-19 Vaccine Roadmap

Data as at:
05 May 2022
Updated weekly

Aged care resident vaccinations



Aged care worker vaccinations

Jurisdictions	Total workers with at least one dose	Workers fully vaccinated	% Workers with at least one dose	% Workers fully vaccinated
NSW	77,184	77,177	99.2%	99.2%
VIC	67,521	67,519	97.5%	97.5%
QLD	46,922	46,919	98.1%	98.1%
SA	26,672	26,656	98.1%	98.1%
WA	24,253	24,251	100.0%	100.0%
TAS	7,459	7,459	100.0%	100.0%
NT	895	895	100.0%	100.0%
ACT	2,860	2,860	96.7%	96.7%
Total	253,766	253,736	98.5%	98.5%

Source: My Aged Care Portal vaccination progress

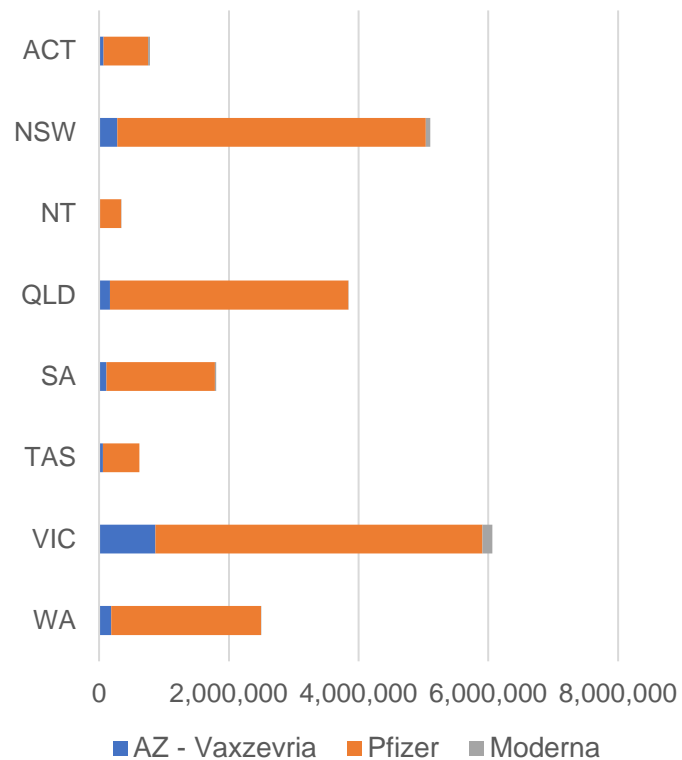
*Status updates are provided by facilities at least once per week. Reporting is updated Monday to Friday to encompass different facility updates being made on different days.

Data is sourced directly from Aged Care Service Providers and is not drawn or closely aligned with data from AIR due to inconsistencies and potential lags in uploading of records.

Data as at:
08 May 2022

Jurisdiction administered

Total vaccine doses administered in State and Territory clinics as at 08 May



21,069,123 total vaccine doses administered in State and Territory clinics as at 08 May
 + **1,737** recorded in the last 24 hours
 + **40,388** recorded in the last 7 days

NSW
5,107,621
 (+338 daily increase)

VIC
6,069,771
 (+534 daily increase)

QLD
3,841,235
 (+77 daily increase)

WA
2,498,521
 (+397 daily increase)

TAS
620,865
 (<10 daily increase)

SA
1,808,124
 (+313 daily increase)

ACT
781,521
 (+70 daily increase)

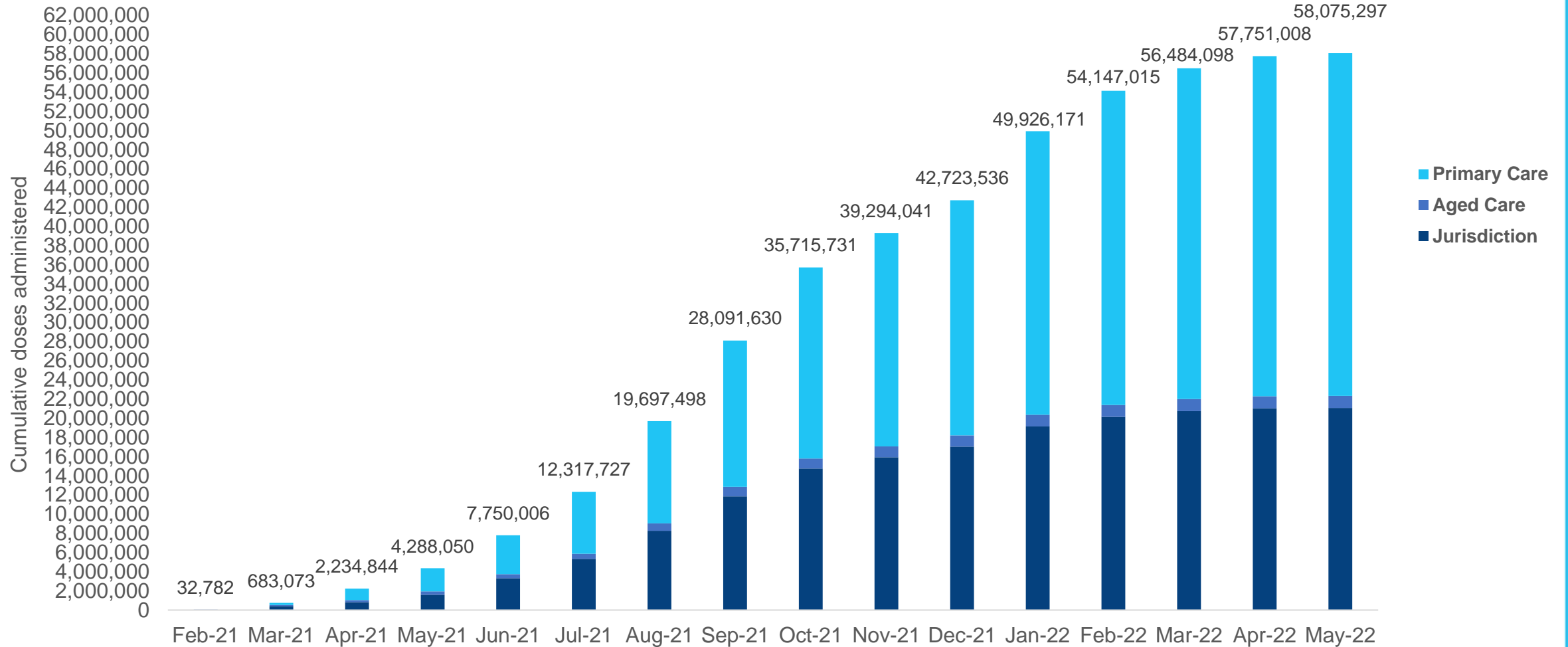
NT
341,465
 (<10 daily increase)

*Sourced from the Australian Immunisation Register. Numbers are calculated as difference in daily cumulative reported numbers to allow for historical corrections.

Source: Australian Immunisation Register

Cumulative doses administered by channel

Data as at:
08 May 2022



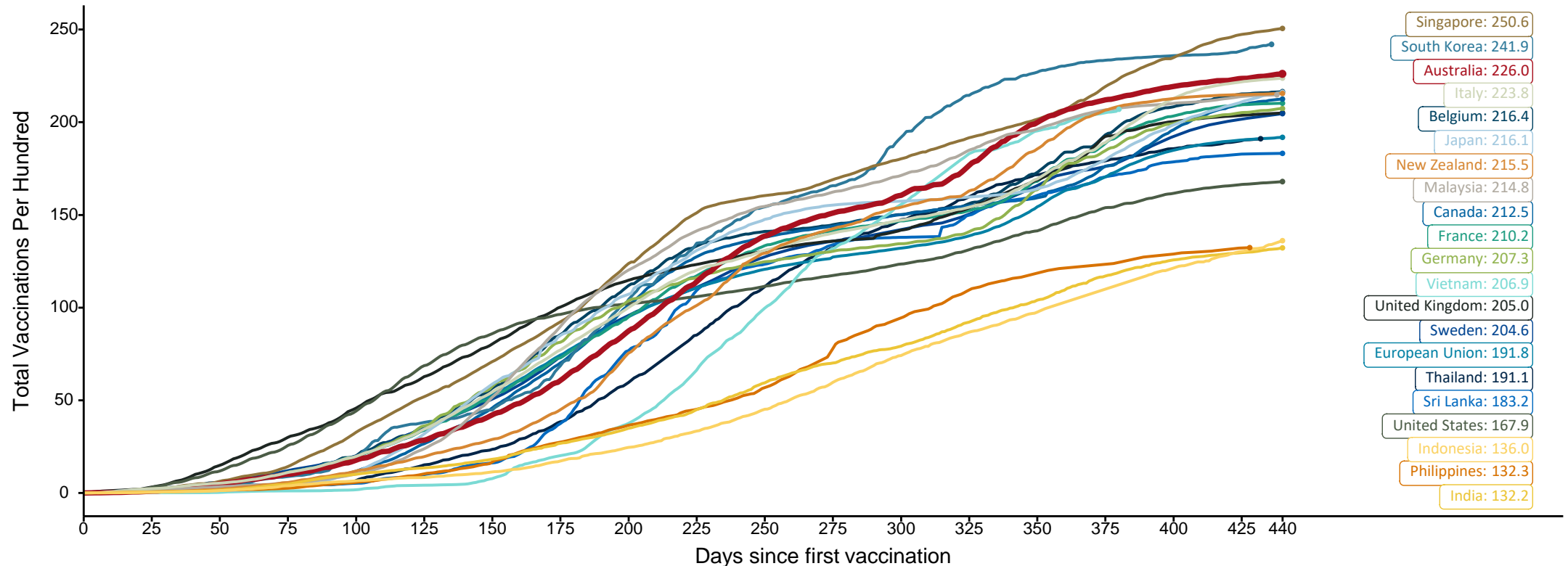
Source: Australian Immunisation Register

Doses at equivalent stages of rollout (Day 440)

Data as at:
08 May 2022

The x-axis is truncated at the length of Australia's vaccination program. Countries with intermittent reporting have had their doses per 100 imputed to Australia's current stage of rollout. Israel excluded as it is beyond scale of the graph

Cumulative doses administered (08 May): **58,075,297**

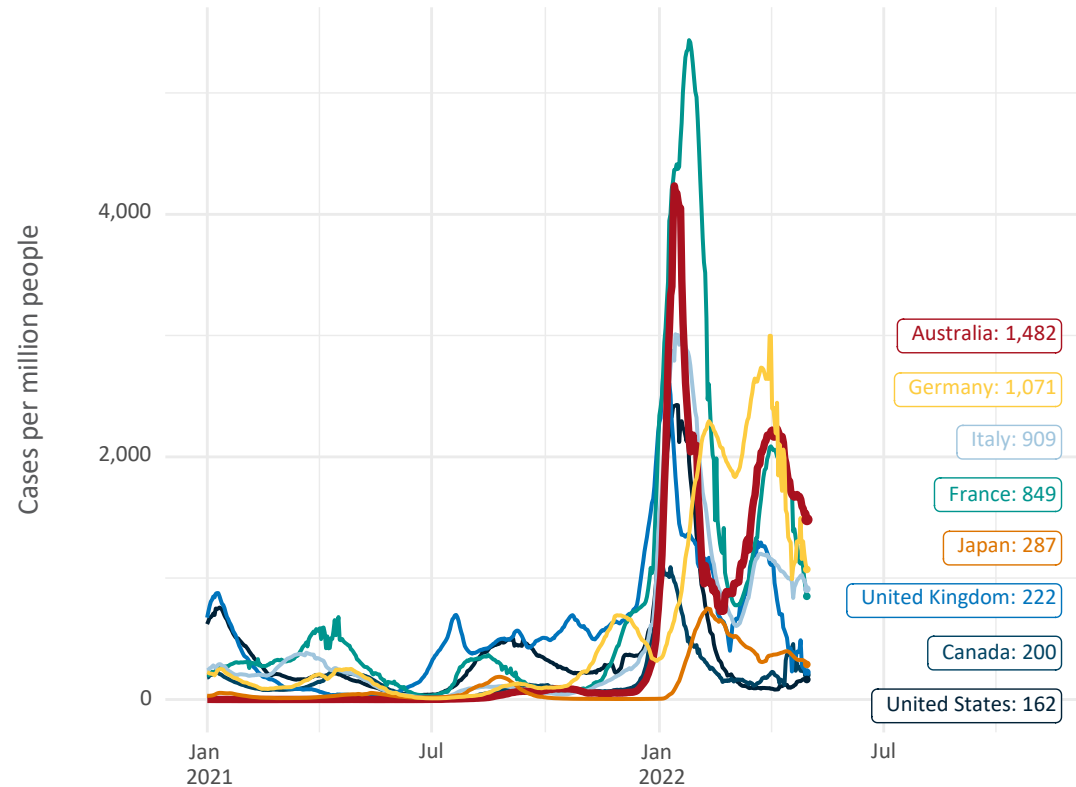


Note: From 11 January 2022, data for Australia includes all doses administered to people 5 and over. Prior to 11 January, data was for 12 and over.
Source: Department of Health (Australia), Our World in Data (international)
Latest data: 08 May

Data as at:
01 May 2022

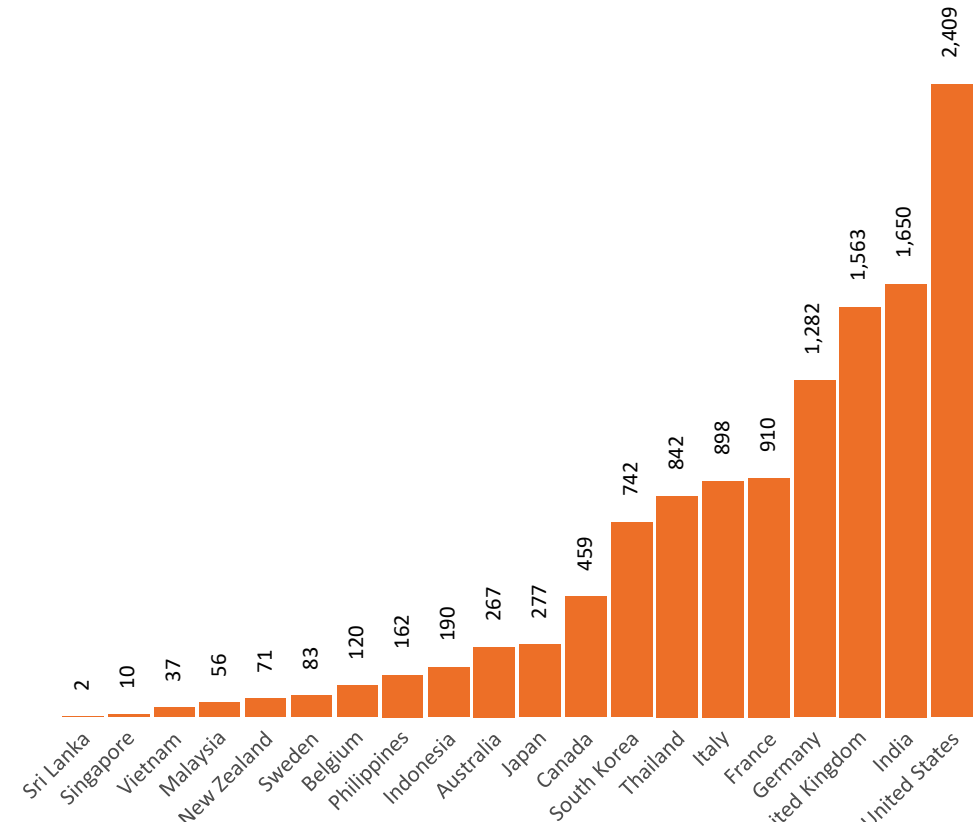
Most Recent International data – COVID-19

New daily cases per million since 2021, Australia and G7 countries
Smoothed - 7 day average



Source: OWID
Data downloaded: 02 May 2022 09:33
Latest data: 30 Apr 2022

COVID-19 deaths in past 7 days - Australia and select countries



Source: OWID
Data downloaded: 02 May 2022 09:33
Latest data: 30 Apr 2022

Note: Data as at 01-05-22 due to irregularities in the OWID weekly deaths data.

Data as at midnight:
8 May 2022 (updated weekly)

Pandemic Response Payments

2.38 million

People have received at least one COVID Disaster Payment (including ISP200)

7.95 million

Claims granted across three different payments

\$14.42 billion

Paid Out as at 8 May 2022



Claims Received Digitally

93%

Three payments available:

COVID Disaster Payment

assisting during a lockdown event in a Commonwealth hotspot.

Income Support Payment \$200

for income support recipients who lost at least 8 hours of work.

Pandemic Leave Disaster

for those who have to self-isolate, quarantine or care.

For more information visit:

www.servicesaustralia.gov.au



COVID Disaster Payment: 5.89 million claims received - 2.19 million individuals paid a total of \$12.59 billion.

\$200 Income Support Payment: 353,000 claims received - 183,000 individuals paid a total of \$268.92 million.

Pandemic Leave Disaster Payment: 2.21 million claims received - 1.34 million individuals paid a total of \$1.55 billion.

COVID-19 DISASTER PAYMENTS

	People who have received at least one COVID Disaster Payment	Paid out as at 8 May 2022	Paid in the week ending 8 May 2022	Claiming Period	Payment Trend
New South Wales	1,080,000	\$7.48b	\$4,200	1 Jul 2021 to 27 Nov 2021	
Victoria	745,000	\$4.45b	\$2,750	8 Jun 2021 to 9 Dec 2021	
Australian Capital Territory	65,000	\$344.7m	Nil	20 Aug 2021 to 25 Nov 2021	
Queensland	196,000	\$252.6m	Nil	7 Aug 2021 to 28 Aug 2021	
South Australia	86,000	\$48.2m	Nil	28 Jul 2021 to 17 Aug 2021	
Northern Territory	7,500	\$6.95m	Nil	25 Aug 2021 to 27 Dec 2021	
Tasmania	6,900	\$3.60m	Nil	22 Oct 2021 to 12 Nov 2021	

Administration and Utilisation

Doses as at 8 May 2022

	Ordered	Available	Administered	Stock on Hand at Sites	Estimated Dose Utilisation %
	Up to 08/05/22	Delivered up to 01/05/22 including redistributions	Up to 08/05/22		(see note)
NSW	6,111,872	6,111,872	5,107,621	393,064	94%
VIC	6,995,954	6,995,954	6,069,771	289,587	97%
QLD	4,847,202	4,805,242	3,841,235	483,619	90%
WA	2,663,158	2,660,278	2,498,521	82,501	Fully utilised
SA	2,151,220	2,122,220	1,808,124	102,159	95%
TAS	656,290	656,290	620,865	1,637	Fully utilised
NT	415,894	405,906	341,465	28,452	94%
ACT	651,386	651,386	781,521	8,692	Fully utilised
Jurisdiction delivered total	24,492,976	24,409,148	21,069,123	1,389,710	96%
Commonwealth Vaccination Providers	1,392,536	1,389,604	1,279,589	6,935	Fully utilised
Commonwealth Primary Care & Other	55,004,532	54,436,386	35,726,585	13,272,878	76%
Total	80,890,044	80,235,138	58,075,297	14,669,523	82%

About this data

- Ordered – Total doses delivered to sites. Based on logistics provider data. This figure includes doses allocated for administration in the coming week.
- Available – total doses that could have been administered to date, less doses re-distributed from States & Territories to Primary Care or Commonwealth Vaccination Providers (i.e., does not include those deliveries recently received, and intended for use in the coming week).
- Administered – Doses administered as at 8 May 2022.
- Stock on Hand at Sites – Available doses minus Administered doses and a small % wastage.
- The dose utilisation is calculated based on the total doses administered and a small % wastage in line with international standards in relation to total available doses.
- For Commonwealth Vaccination Providers, the doses available for administration is for the full period (up to 8 May 2022).
- Commonwealth Vaccination Providers utilisation is not provided as the in-reach rollout is demand-based.