



Australian Government
Operation COVID Shield

COVID-19 Vaccine Roll-out

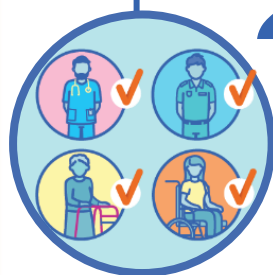
08 May 2022

Data as at:
07 May 2022

Total vaccine doses



58,068,709 total vaccine
doses administered nationally as at 07 May
+20,917 recorded in the last 24 hours



20,031,450

people have had at least one
dose

>95%

of people over the age of 16
have had at least one dose



19,699,211

people are fully vaccinated

>95%

of people over the age of 16 are
fully vaccinated



13,497,494

people over the age of 16
who have received more
than two doses

NSW
18,014,475
(+5,868 daily
increase)

VIC
15,268,509
(+5,661 daily
increase)

QLD
10,984,713
(+3,167 daily
increase)

WA
6,386,768
(+3,196 daily
increase)

TAS
1,309,613
(+453 daily
increase)

SA
4,008,810
(+1,897 daily
increase)

ACT
1,516,454
(+546 daily
increase)

NT
579,367
(+129 daily
increase)

*Administration state breakdown indicates state in which a vaccine was administered

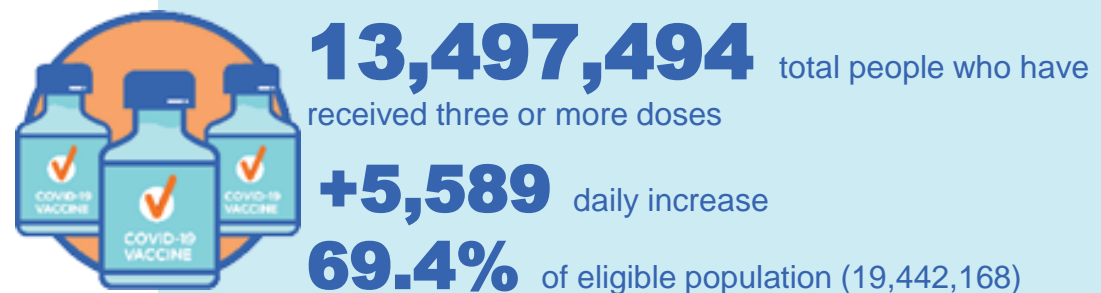
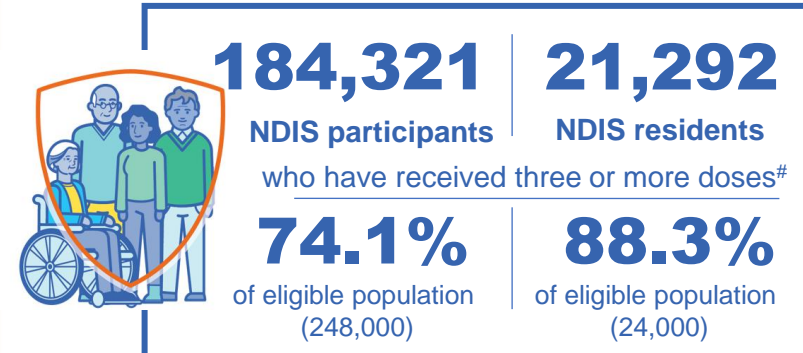
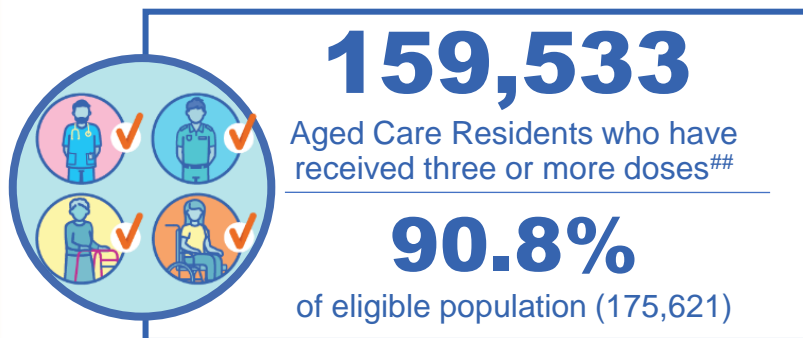
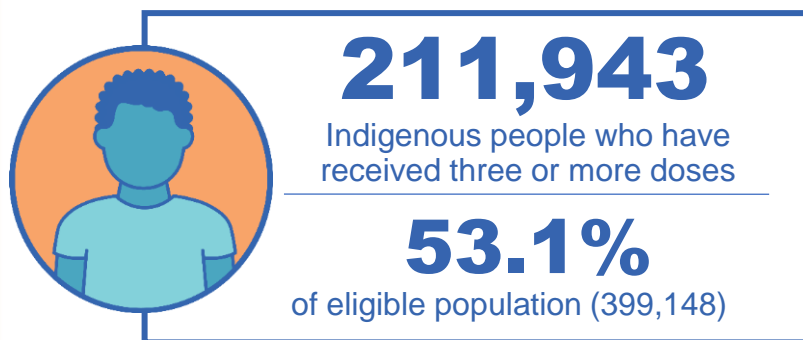
**Overall dose count includes instances of more than three doses per person in a small number of cases.

Source: Australian Immunisation Register

Booster Vaccinations

Australia's COVID-19
Vaccine Roadmap

Data as at:
07 May 2022



	Number of People	Daily Increase	% of Eligible
NSW	4,122,628	1,392	66.6%
VIC	3,611,675	1,538	71.5%
QLD	2,335,655	797	62.7%
WA	1,654,165	979	83.8%
SA	956,510	557	72.6%
TAS	308,412	96	72.1%
ACT	267,469	70	77.5%
NT	126,305	81	76.2%

*People may belong to multiple groups and could be represented in the above breakdowns multiple times.
NDIS participants data as at 04 May 2022. ## Aged Care Residents data as at 06 May 2022.

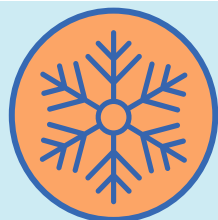
Source: Australian Immunisation Register

114,675 doses administered to persons
residing in other territories or with
missing residential information

Winter / Fourth Doses

Data as at:
01 May 2022
Updated weekly

Australia's COVID-19
Vaccine Roadmap



500,924 total people (16+) who have received four or more doses

+155,095 weekly increase

	Number of People 16+	Weekly Increase
ACT	13,392	3,455
NSW	170,986	49,550
NT	2,973	656
QLD	96,536	31,058
SA	35,285	11,715
TAS	14,020	4,807
VIC	125,651	39,760
WA	39,626	13,349

2,455 doses administered to persons
residing in other territories or with
missing residential information

Source: Australian Immunisation Register

Vaccinations by residential location

Australia's COVID-19 Vaccine Roadmap

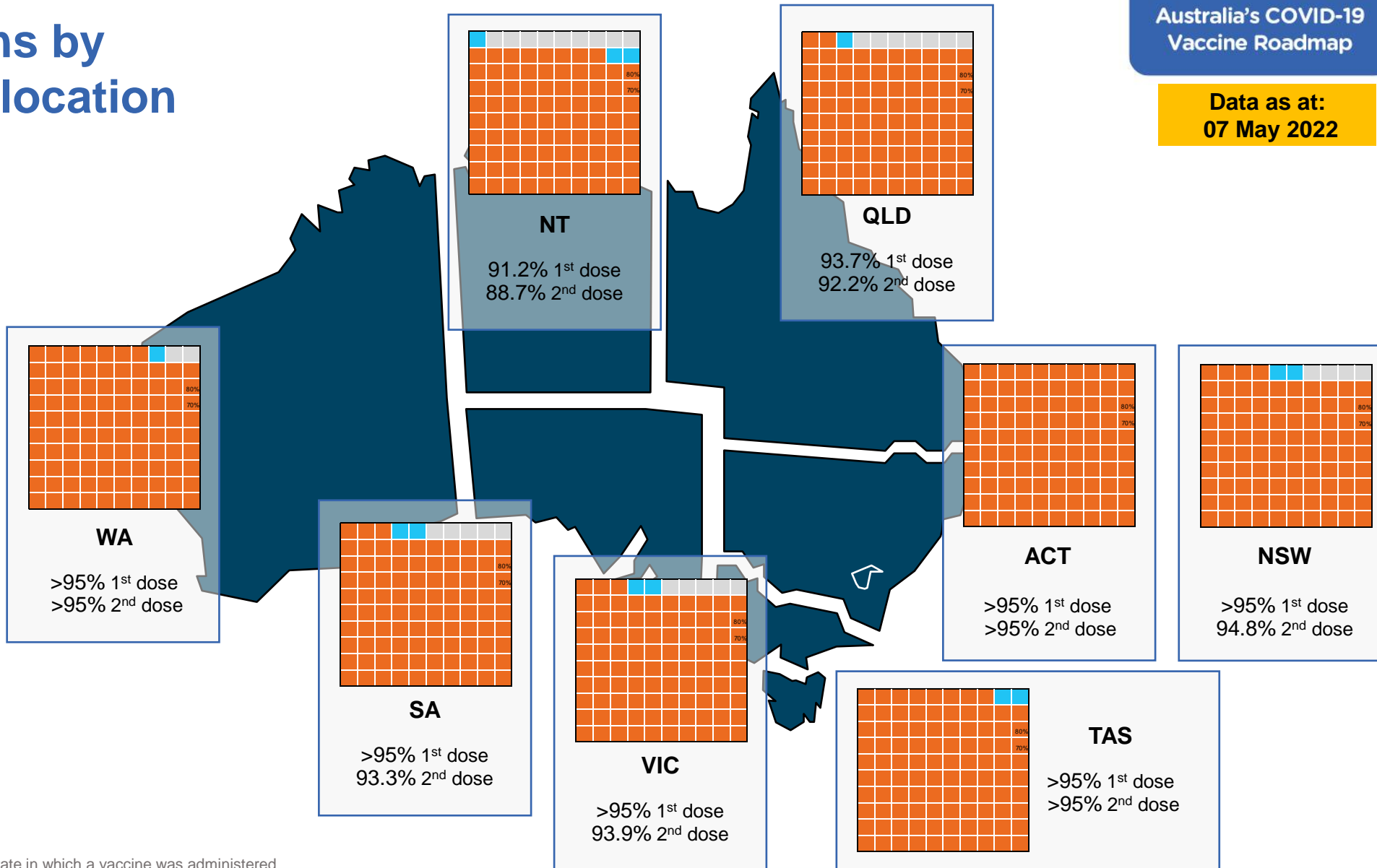
Data as at:
07 May 2022

First doses

Age	Today	4 weeks ago	8 weeks ago
16+	>95%	>95%	>95%
50+	>95%	>95%	>95%
70+	>95%	>95%	>95%

Fully vaccinated

Age	Today	4 weeks ago	8 weeks ago
16+	>95%	>95%	>95%
50+	>95%	>95%	>95%
70+	>95%	>95%	>95%



*Residential state may differ from the state in which a vaccine was administered

Commonwealth and Jurisdiction vaccine doses administered

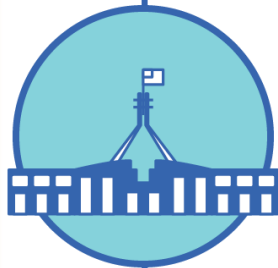
Data as at:
07 May 2022



58,068,709 total vaccine
doses administered nationally as at 07 May
+ 20,917 recorded in the last 24 hours



21,067,386
doses administered by state
and territory facilities
+ 5,263
recorded in the last 24 hours



37,001,323
doses administered by
commonwealth facilities
+ 15,654
recorded in the last 24 hours

35,721,849 total vaccine doses
administered in primary care settings
1,279,474 total vaccine doses
administered in aged care and disability
settings

NSW	Jurisdictions	Commonwealth
Cumulative	5,107,283	12,907,192
Daily increase	964	4,904

VIC	Jurisdictions	Commonwealth
Cumulative	6,069,237	9,199,272
Daily increase	1,721	3,940

QLD	Jurisdictions	Commonwealth
Cumulative	3,841,158	7,143,555
Daily increase	446	2,721

WA	Jurisdictions	Commonwealth
Cumulative	2,498,124	3,888,644
Daily increase	940	2,256

TAS	Jurisdictions	Commonwealth
Cumulative	620,865	688,748
Daily increase	143	310

SA	Jurisdictions	Commonwealth
Cumulative	1,807,811	2,200,999
Daily increase	822	1,075

ACT	Jurisdictions	Commonwealth
Cumulative	781,451	735,003
Daily increase	136	410

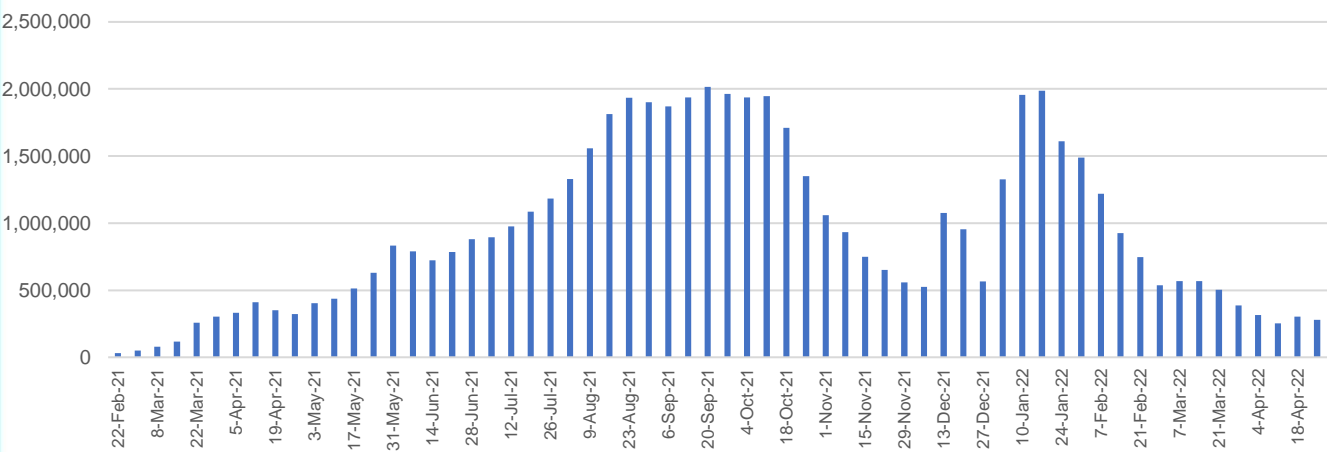
NT	Jurisdictions	Commonwealth
Cumulative	341,457	237,910
Daily increase	91	38

Vaccine milestone charts

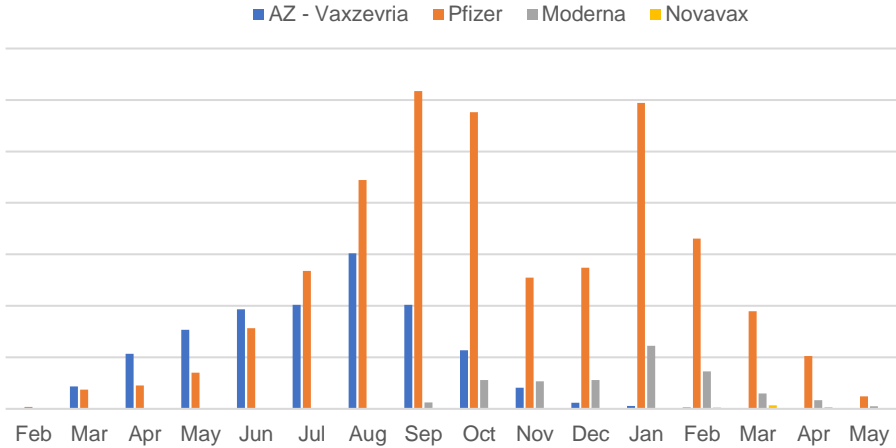
Data as at:
07 May 2022

Australia's COVID-19
Vaccine Roadmap

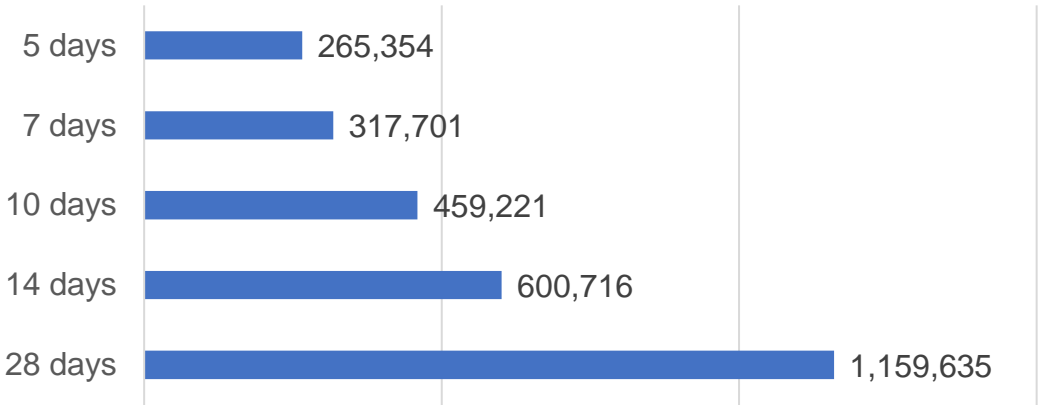
Doses Administered by Week



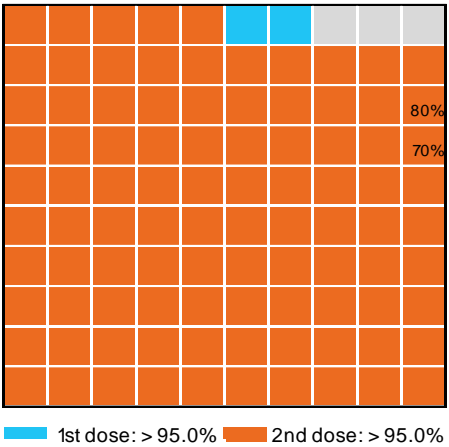
Doses by administration month and vaccine type



Doses Reported



Eligible population percentage coverage



*Each square represents 1% of the national population. Squares are filled as milestones are achieved.

*Sourced from the Australian Immunisation Register.

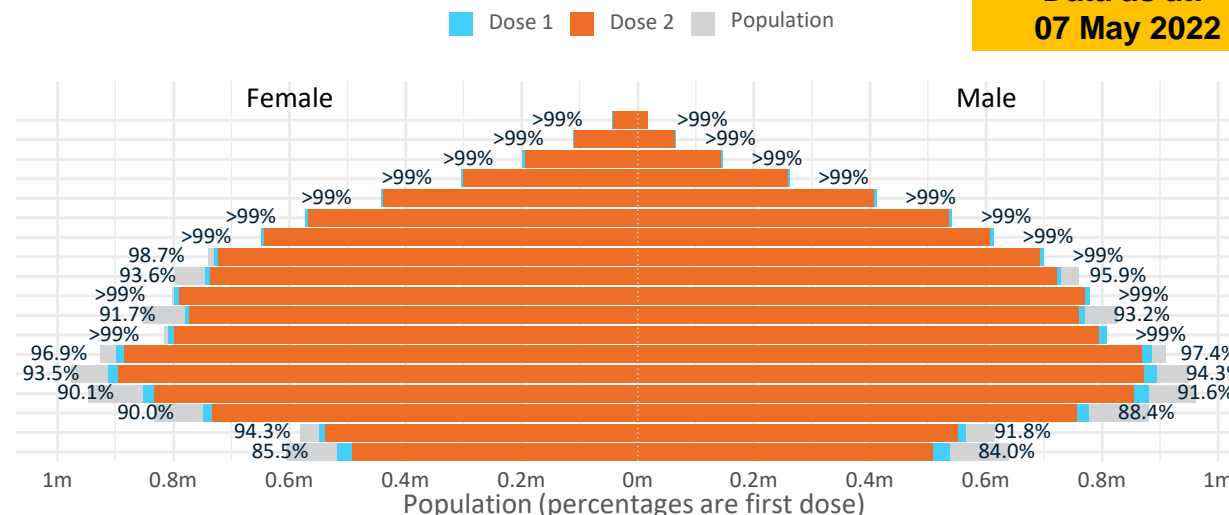
Data as at:
07 May 2022

Doses by age and sex

First and second doses by age and sex

	16+	50+	12-15	5-11
Dose 1	97.15% (20,031,450 doses / 20,619,959 people)	>99% (8,869,703 doses / 8,749,703 people)	84.79% (1,054,800 doses / 1,243,990 people)	52.82% (1,202,502 doses / 2,276,638 people)
Dose 2	95.53% (19,699,211 doses / 20,619,959 people)	>99% (8,763,367 doses / 8,749,703 people)	80.40% (1,000,157 doses / 1,243,990 people)	37.52% (854,265 doses / 2,276,638 people)

Age	Dose 1	Dose 2
95+	62,545 (>99%)	59,154 (>99%)
90-94	177,999 (>99%)	172,379 (>99%)
85-89	345,130 (>99%)	338,165 (>99%)
80-84	565,367 (>99%)	558,094 (>99%)
75-79	854,280 (>99%)	845,920 (>99%)
70-74	1,115,143 (>99%)	1,104,119 (>99%)
65-69	1,264,488 (>99%)	1,250,280 (>99%)
60-64	1,431,543 (>99%)	1,415,433 (98.5%)
55-59	1,475,582 (94.9%)	1,459,126 (93.8%)
50-54	1,577,626 (>99%)	1,560,697 (>99%)
45-49	1,551,612 (92.5%)	1,533,131 (91.4%)
40-44	1,618,376 (>99%)	1,594,341 (98.4%)
35-39	1,788,305 (97.5%)	1,756,461 (95.7%)
30-34	1,814,968 (94.3%)	1,773,565 (92.2%)
25-29	1,742,424 (91.4%)	1,695,276 (88.9%)
20-24	1,532,899 (89.5%)	1,493,761 (87.2%)
16-19	1,113,163 (93.1%)	1,089,309 (91.1%)
12-15	1,054,800 (84.8%)	1,000,157 (80.4%)

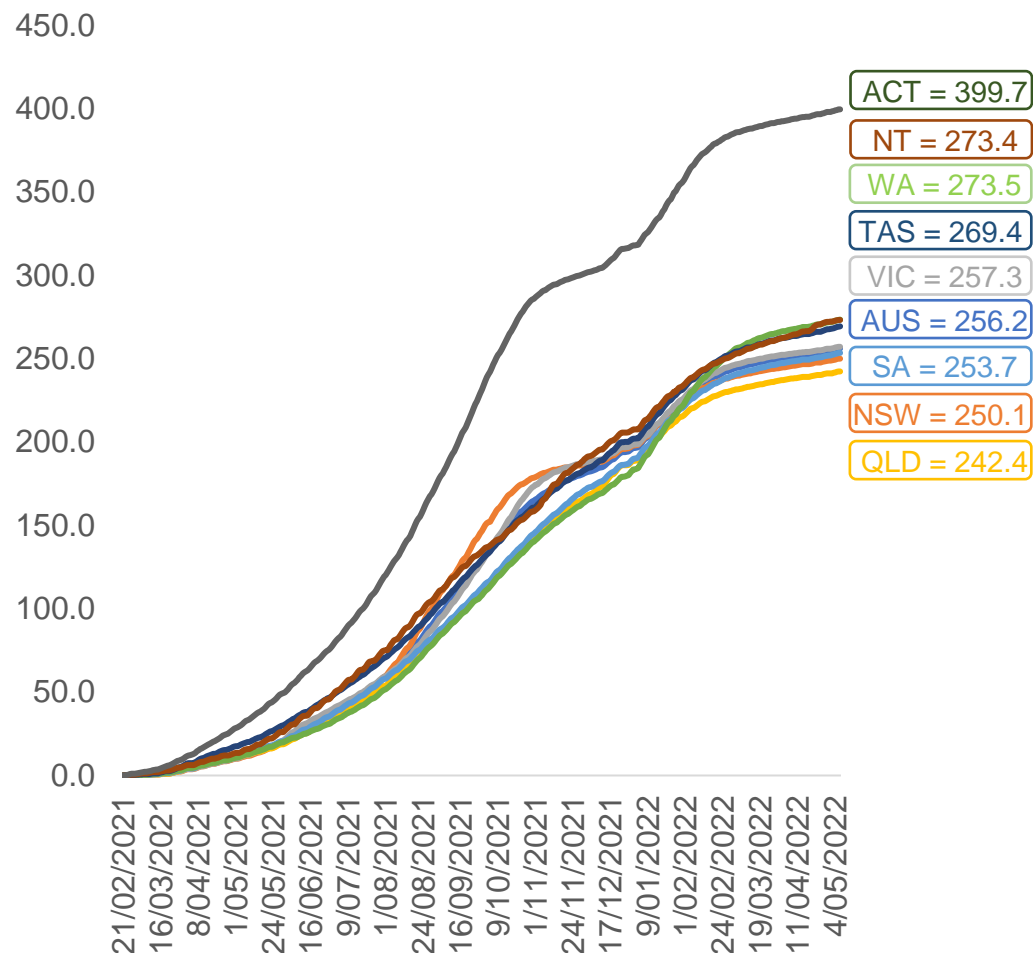


	AUS	ACT	NSW	NT	QLD	SA	TAS	VIC	WA
16 and over - dose 1	20,031,450	352,268	6,319,933	173,790	3,854,695	1,373,234	444,525	5,154,369	2,092,060
16 and over - dose 2	19,699,211	346,741	6,224,361	169,055	3,790,807	1,343,882	435,408	5,077,989	2,060,727
16 and over - population	20,619,959*	344,037	6,565,651	190,571	4,112,707	1,440,400	440,172	5,407,574	2,114,978
16 and over % with dose 1	97.15%	>99%	96.26%	91.19%	93.73%	95.34%	>99%	95.32%	98.92%
16 and over % with dose 2	95.53%	>99%	94.80%	88.71%	92.17%	93.30%	98.92%	93.91%	97.43%
5 to 11 - dose 1	1,202,502	31,952	358,607	13,245	208,989	84,344	28,762	327,071	141,617
5 to 11 - dose 2	854,265	26,339	258,498	8,082	143,750	60,509	22,638	234,044	95,991
5 to 11 - population	2,276,638	39,789	716,460	24,750	478,731	148,816	45,033	578,499	244,154
5 to 11 % with dose 1	52.82%	80.30%	50.05%	53.52%	43.65%	56.68%	63.87%	56.54%	58.00%
5 to 11 % with dose 2	37.52%	66.20%	36.08%	32.65%	30.03%	40.66%	50.27%	40.46%	39.32%
12 to 15 - dose 1	1,054,800	20,092	324,444	10,840	206,901	68,442	22,949	275,498	115,958
12 to 15 - dose 2	1,000,157	19,557	310,310	9,782	193,906	64,863	21,863	263,944	107,490
12 to 15 - population	1,243,990	19,693	390,330	13,060	270,146	82,747	26,308	308,611	132,869
12 to 15 % with dose 1	84.79%	>99%	83.12%	83.00%	76.59%	82.71%	87.23%	89.27%	87.27%
12 to 15 % with dose 2	80.40%	>99%	79.50%	74.90%	71.78%	78.39%	83.10%	85.53%	80.90%

*National population will not equal sum of listed jurisdictions due to a small number of people counted in national population residing in some 'other' territories. Sum of state doses will not add to national total as some records are unable to be geocoded to a State or Territory.
Doses sourced from Australian Immunisation Register, population from ABS ERP June 2020

Vaccinations by location

Cumulative total doses administered vs eligible state populations*

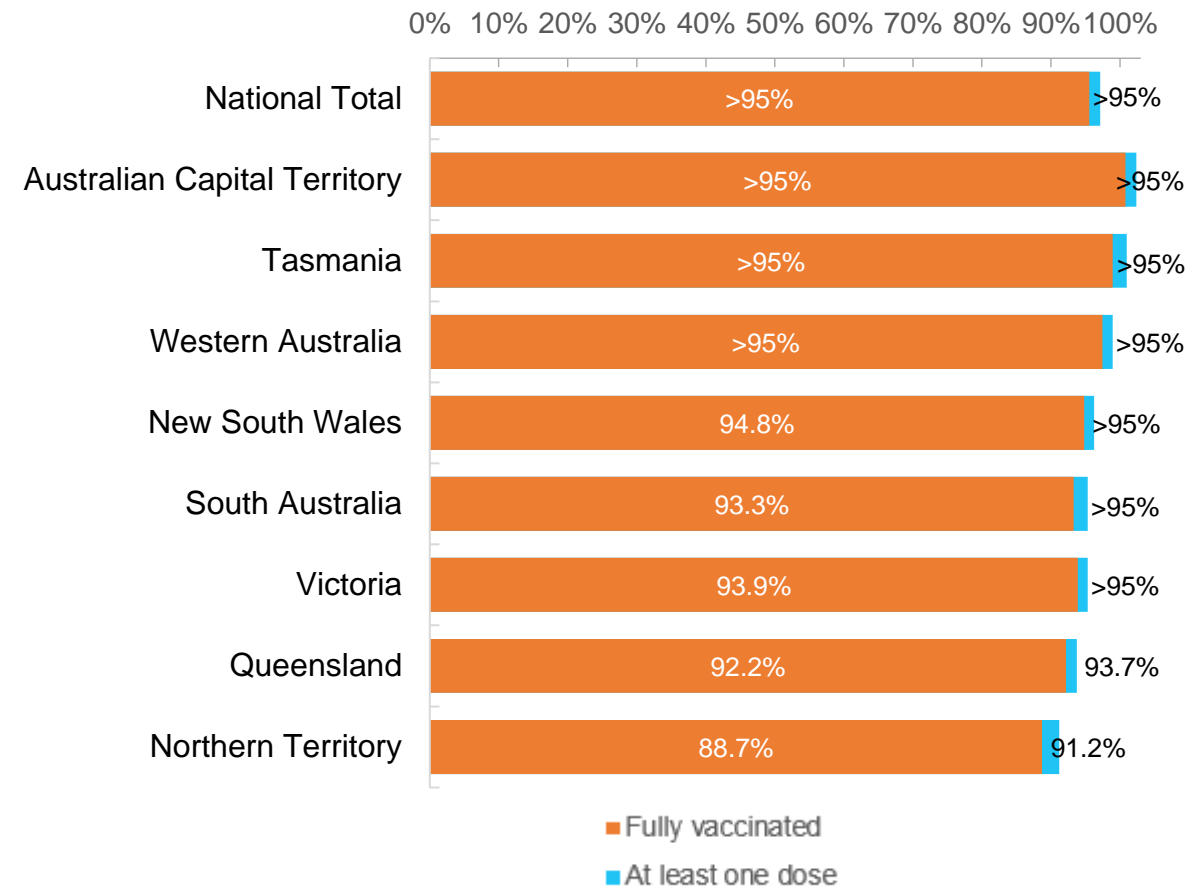


*Not an indication of percentage vaccinated, numbers will exceed 100 due to multiple doses required per person of the population. All doses are included for those aged 12 and above, and are based on vaccination provider location.

Data as at:
07 May 2022

Australia's COVID-19
Vaccine Roadmap

First and Second Doses by residential location



Aboriginal and Torres Strait Islander peoples

Number of people vaccinated

Data as at:
03 May 2022
Updated weekly

Australia's COVID-19
Vaccine Roadmap



439,739

people over the age of 16
have had at least one dose

84.5%

of people over the age of 16
have had at least one dose



420,457

people over the age of 16
are fully vaccinated

80.8%

of people over the age of 16 are
fully vaccinated



People aged 12 – 15 years

48,551

42,734

68.3%

At least one dose

60.1%

Fully vaccinated

178 Aboriginal community controlled health services (ACCHS)

0#

50

27

44

12

3

21

21

ACT

NSW

NT

QLD

SA

TAS

VIC

WA

Medicare Address State ^{##}	Individuals Dose 1	Individuals Dose 1 %	Individuals Dose 2	Individuals Dose 2 %
Australian Capital Territory	4,791	90.9%	4,672	88.7%
New South Wales	135,024	86.7%	131,916	84.8%
Northern Territory	41,579	89.5%	39,405	84.8%
Queensland	115,558	81.4%	110,018	77.5%
South Australia	19,896	80.0%	18,461	74.3%
Tasmania	13,892	88.6%	13,485	86.0%
Victoria	35,452	89.8%	34,662	87.8%
Western Australia	53,624	86.3%	49,606	79.8%
Unknown/Other Territories	19,923	68.8%	18,232	62.9%
Totals	439,739	84.5%	420,457	80.8%

Source: Australian Immunisation Register

*Identifying as Aboriginal and Torres Strait Islander is optional and the estimated population may be under reported.

**Includes all Aboriginal and Torres Strait Islander peoples who have received a vaccination, not limited to those administered in an ACCHS setting

#ACCHS in the ACT are currently operating as a Commonwealth Vaccine Clinics so not included to avoid double counting

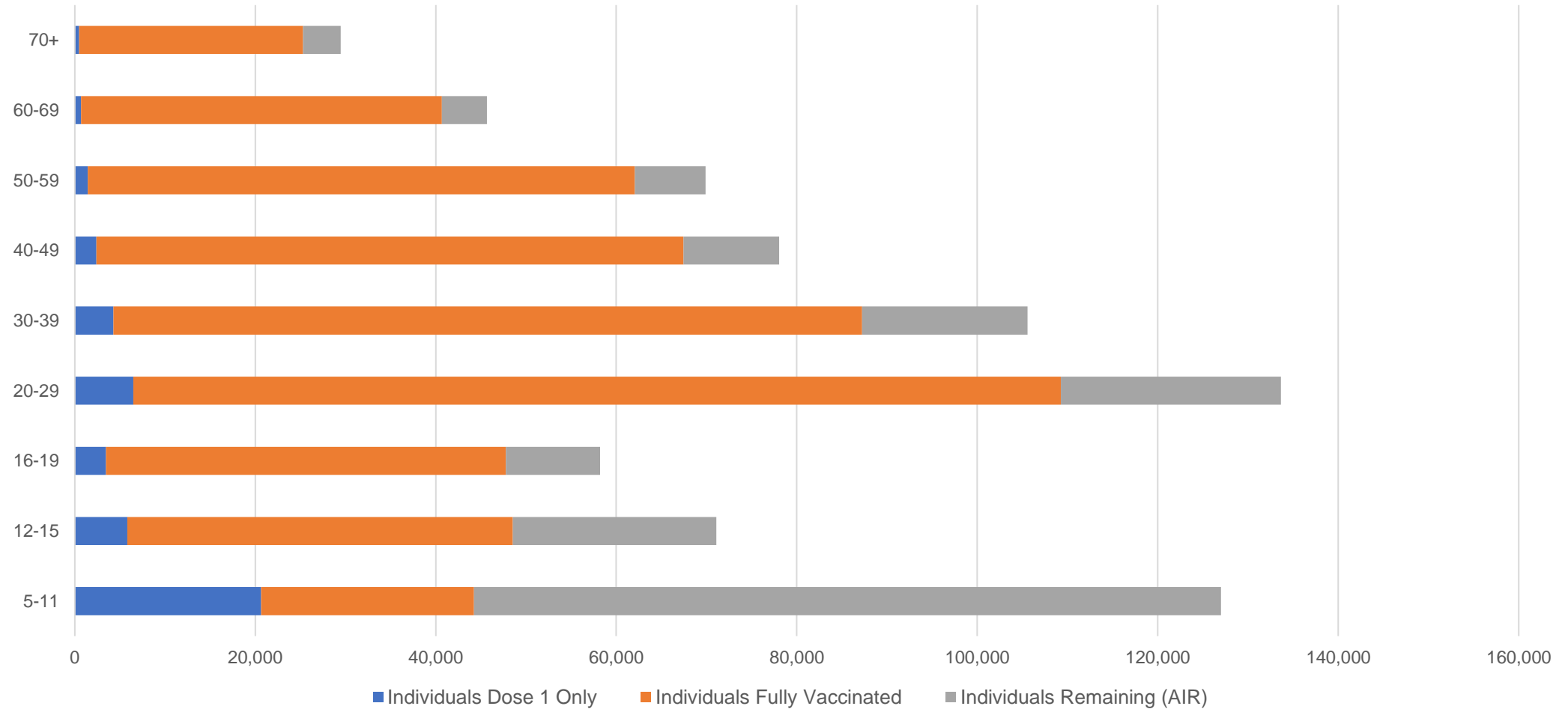
##The above table includes all identified Aboriginal and Torres Strait Islander people who are aged 16 and above by their state of residence.

Aboriginal and Torres Strait Islander peoples

Number of people vaccinated by age

Data as at:
03 May 2022
Updated weekly

Australia's COVID-19
Vaccine Roadmap



Source: Australian Immunisation Register

Commonwealth primary care

Data as at:
07 May 2022

Australia's COVID-19
Vaccine Roadmap



Primary care vaccine administration sites

5,803	128	178	3,599
GPs	CVCs	ACCHS	Pharmacies



35,721,849 total vaccine doses administered
primary care settings as at 07 May
+ 15,355 recorded in the last 24 hours

Primary care vaccinations by provider type

	Doses administered	Daily increase	7 day increase
General Practice* includes other Commonwealth	28,715,114	10,418	191,655
Pharmacy	7,006,735	4,937	80,959

NSW
12,348,327
(+4,883 daily increase)

VIC
8,880,373
(+3,867 daily increase)

QLD
6,864,301
(+2,618 daily increase)

WA
3,752,916
(+2,169 daily increase)

TAS
667,656
(+302 daily increase)

SA
2,120,762
(+1,061 daily increase)

ACT
563,364
(+371 daily increase)

NT
214,016
(+17 daily increase)

310,134

doses administered to persons
residing in other territories or with
missing residential information

*General practice includes Commonwealth Vaccination Clinics, Aboriginal Community Health Centres, Royal Flying Doctor Service and other Commonwealth vaccination facilities

Source: Australian Immunisation Register

Data as at:
07 May 2022

Commonwealth aged care and disability doses administered



1,279,474 (+ 299 last 24 hours)

Total vaccine doses administered in aged care and disability facilities as at 07 May

Number of doses administered as part of the Commonwealth aged and disability care rollout

NSW
560,528
(+86 daily increase)

VIC
237,534
(+55 daily increase)

QLD
203,530
(+68 daily increase)

WA
108,575
(+21 daily increase)

TAS
23,223
(+34 daily increase)

SA
84,361
(+27 daily increase)

ACT
17,361
(<10 daily increase)

NT
7,537
(<10 daily increase)

36,825

doses administered to persons
residing in other territories or with
missing residential information

*Sourced from the Australian Immunisation Register. Includes all persons vaccinated at participating residential aged care, disability and related industry settings.

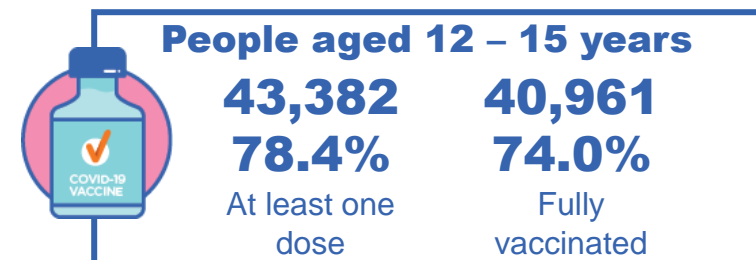
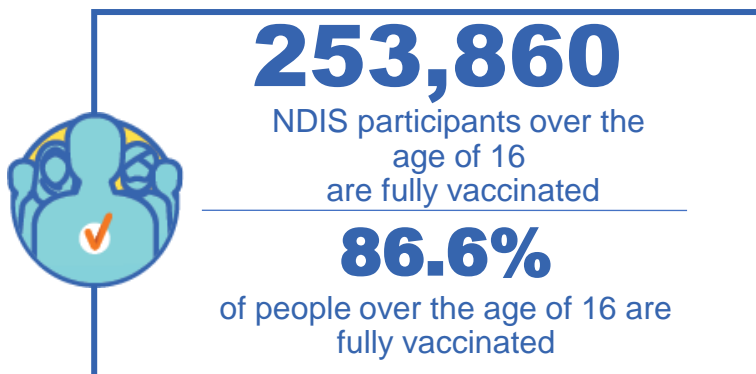
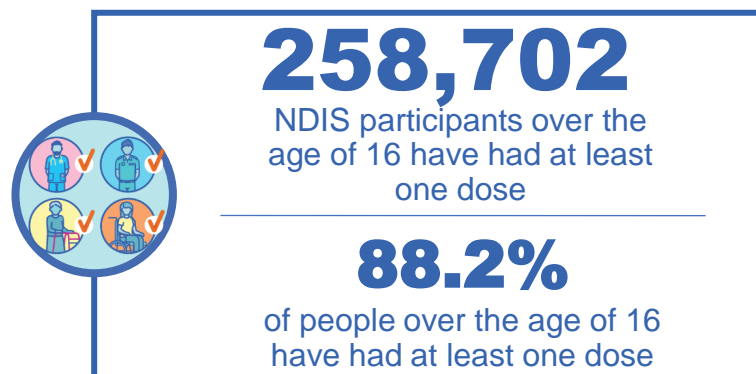
**State level breakdown indicates the residential location and may not align to the state in which the vaccination occurred.

Source: Australian Immunisation Register

National Disability Insurance Scheme (NDIS) reported vaccinations

Data as at:
05 May 2022
Updated weekly

Australia's COVID-19
Vaccine Roadmap



NDIS participant vaccinations

	People aged 16+ with at least one dose	People aged 16+ fully vaccinated	% People aged 16+ with at least one dose	% People aged 16+ fully vaccinated
ACT	4,887	4,821	90.1%	88.9%
NSW	79,401	78,110	88.5%	87.1%
NT	2,237	2,164	78.4%	75.8%
QLD	51,060	50,087	86.8%	85.1%
SA	21,131	20,611	86.1%	84.0%
TAS	6,475	6,321	88.1%	86.0%
VIC	68,808	67,594	89.4%	87.8%
WA	24,703	24,152	89.7%	87.7%
National	258,702	253,860	88.2%	86.6%

Source: Linkage between National Disability Insurance Agency data and the Australian Immunisation Register. Total NDIS participant numbers as at 28 February. Australian Immunisation Register data as at 4 May. Includes all participants regardless of residence type.

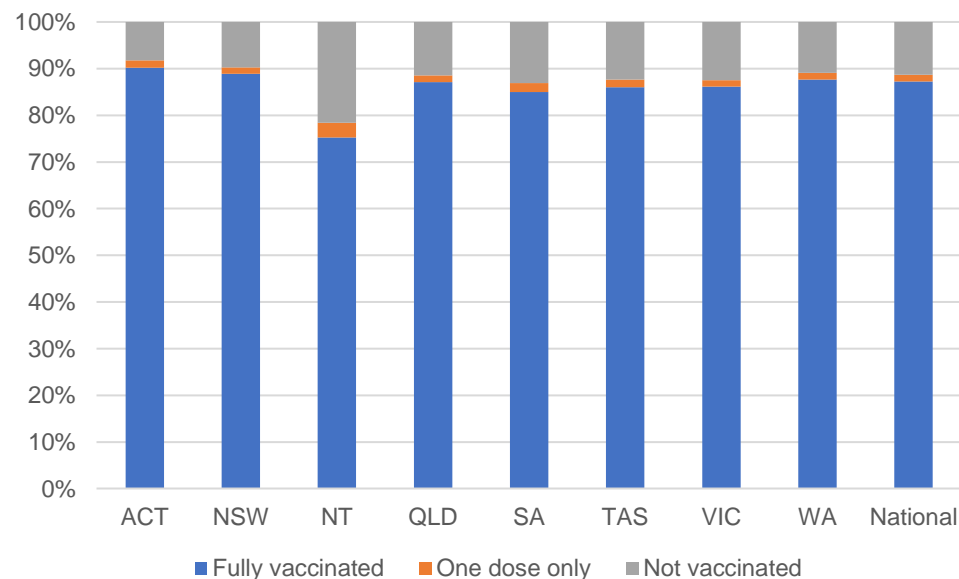
National Disability Insurance Scheme (NDIS) reported vaccinations

Data as at:
05 May 2022
Updated Weekly

Australia's COVID-19
Vaccine Roadmap

NATIONAL	Total people with at least one dose	People fully vaccinated	Total number of individuals in cohort	% People with at least one dose	% People fully vaccinated
NDIS participants living in disability accommodation	20,790	20,450	23,352	89.0%	87.6%

NDIS participants in disability and aged care accommodation



Source: Linkage between National Disability Insurance Agency data and the Australian Immunisation Register. Includes participants residing in disability accommodation only.

Source: Total NDIS participant numbers as at 28 February. Participant data as at 4 May. Australian Immunisation Register data as at 4 May. Worker data as at 4 May.

NDIS workforce vaccinations

	NDIS workers with at least one dose	NDIS workers fully vaccinated	% NDIS workers with at least one dose	% NDIS workers fully vaccinated
NSW	121,713	117,437	98.2%	94.8%
VIC	116,092	112,390	98.3%	95.2%
QLD	69,687	68,782	97.5%	96.3%
WA	32,669	31,051	97.8%	93.0%
SA	35,437	33,033	98.5%	91.8%
TAS	10,733	10,504	99.5%	97.4%
ACT	3,511	3,469	99.0%	97.8%
NT	3,442	3,293	99.4%	95.1%
TOTAL	393,284	379,959	98.2%	94.8%

Source: the NDIS Commission has established a requirement for registered NDIS providers who provide intensive disability support services to report on the vaccination status of workers they employ, or otherwise engage, to deliver NDIS-funded supports and services, and who are required to be vaccinated in accordance with in-force state and territory public health orders. The statistics reflect data reported to the NDIS Commission by registered NDIS providers and should be considered indicative and subject to change

Note: Some registered NDIS providers are yet to report on the vaccination status of their workforce. The NDIS Commission is working with those providers around reporting requirements.

Remaining workers not included include those exempt from vaccination requirements, workers whose vaccination status is not yet verified by the provider (such as workers on leave) and provider reporting anomalies.

Residential aged care vaccination rollout

Residential aged care facilities status

175,621

People fully vaccinated

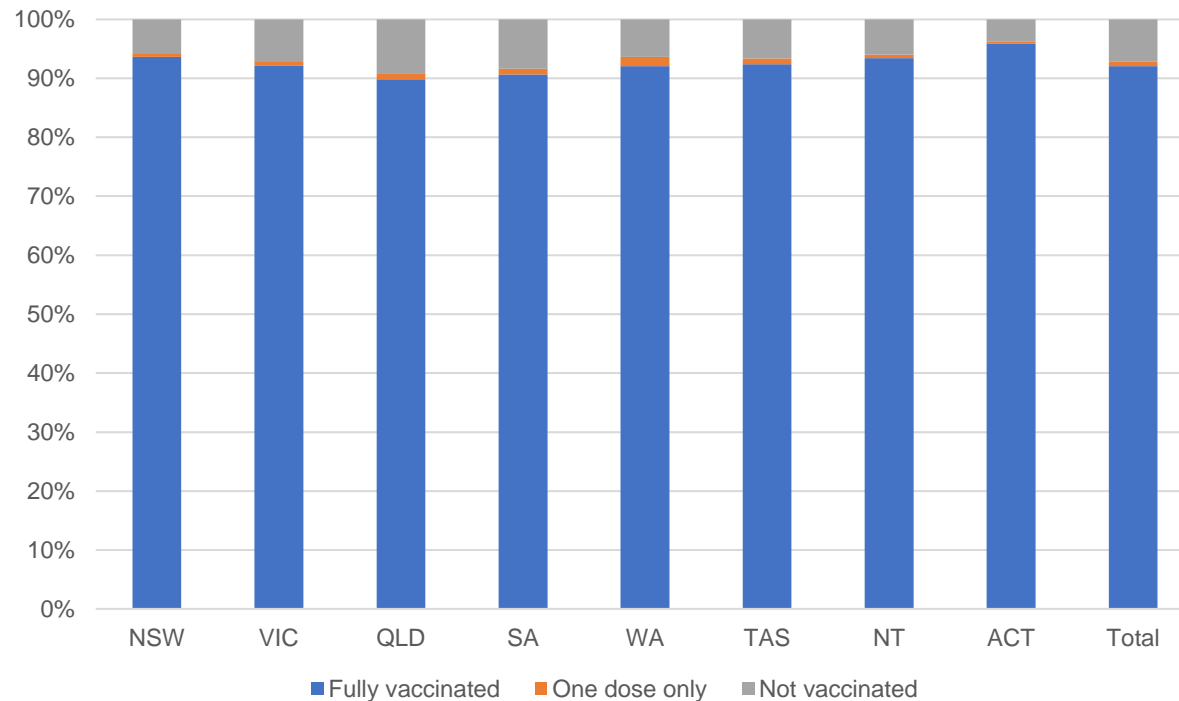
177,159

People with at least one dose

Australia's COVID-19 Vaccine Roadmap

Data as at:
05 May 2022
Updated weekly

Aged care resident vaccinations



Aged care worker vaccinations

Jurisdictions	Total workers with at least one dose	Workers fully vaccinated	% Workers with at least one dose	% Workers fully vaccinated
NSW	77,184	77,177	99.2%	99.2%
VIC	67,521	67,519	97.5%	97.5%
QLD	46,922	46,919	98.1%	98.1%
SA	26,672	26,656	98.1%	98.1%
WA	24,253	24,251	100.0%	100.0%
TAS	7,459	7,459	100.0%	100.0%
NT	895	895	100.0%	100.0%
ACT	2,860	2,860	96.7%	96.7%
Total	253,766	253,736	98.5%	98.5%

Source: My Aged Care Portal vaccination progress

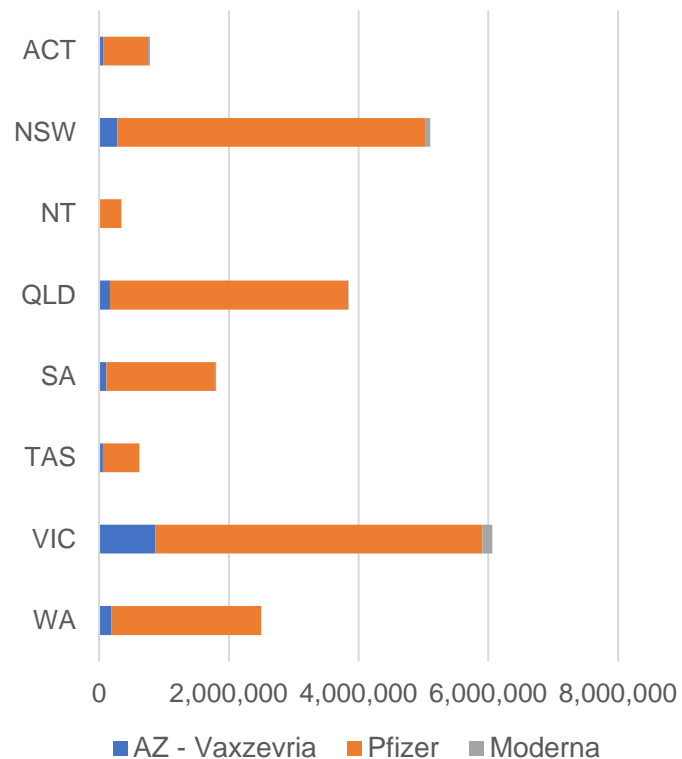
*Status updates are provided by facilities at least once per week. Reporting is updated Monday to Friday to encompass different facility updates being made on different days.

Data is sourced directly from Aged Care Service Providers and is not drawn or closely aligned with data from AIR due to inconsistencies and potential lags in uploading of records.

Data as at:
07 May 2022

Jurisdiction administered

Total vaccine doses administered in State and Territory clinics as at 07 May



21,067,386 total vaccine doses administered
in State and Territory clinics as at 07 May
+ **5,263** recorded in the last 24 hours
+ **41,157** recorded in the last 7 days

NSW
5,107,283
(+964 daily
increase)

VIC
6,069,237
(+1,721 daily
increase)

QLD
3,841,158
(+446 daily
increase)

WA
2,498,124
(+940 daily
increase)

TAS
620,865
(+143 daily
increase)

SA
1,807,811
(+822 daily
increase)

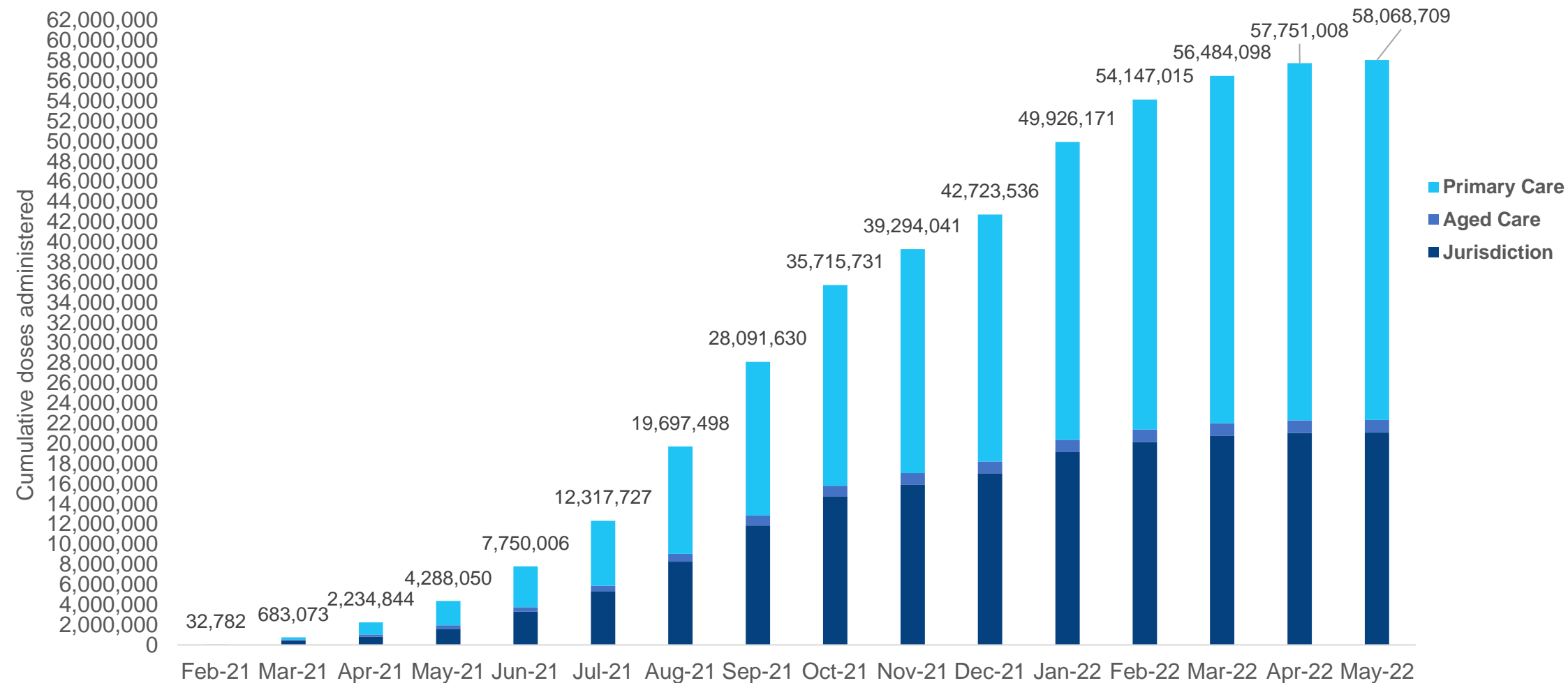
ACT
781,451
(+136 daily
increase)

NT
341,457
(+91 daily
increase)

*Sourced from the Australian Immunisation Register. Numbers are calculated as difference in daily cumulative reported numbers to allow for historical corrections.

Cumulative doses administered by channel

Data as at:
07 May 2022



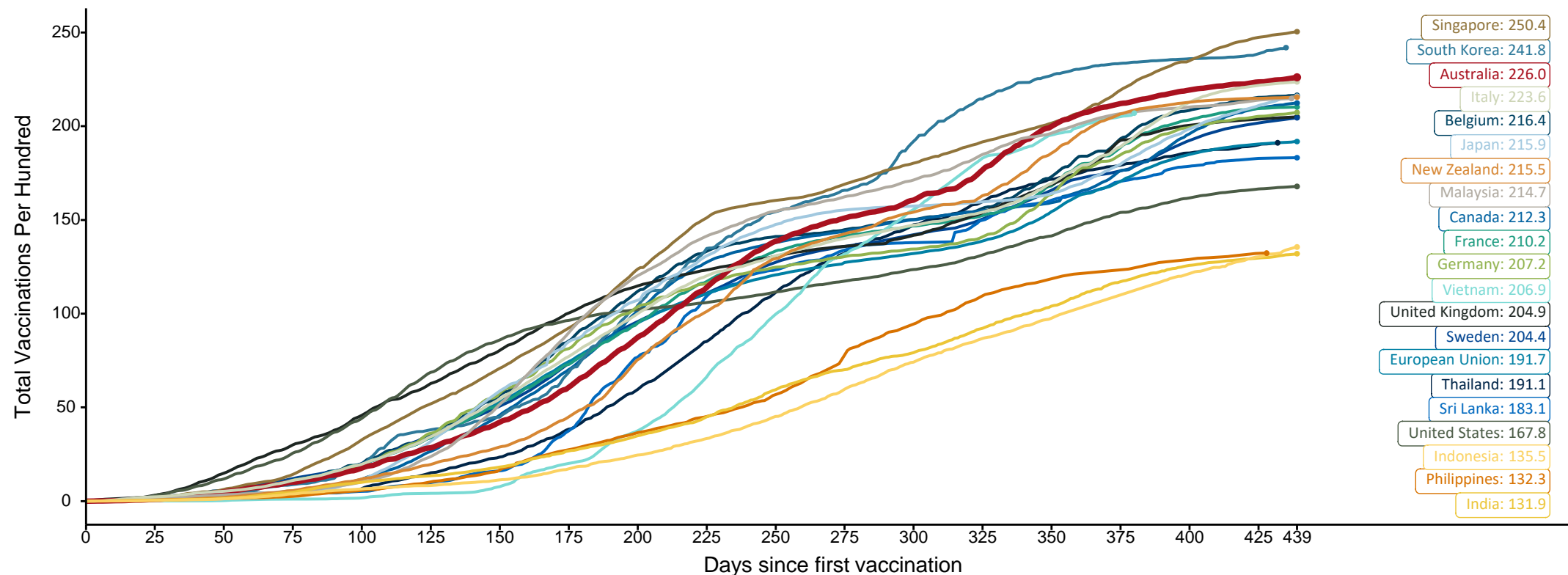
Source: Australian Immunisation Register

Doses at equivalent stages of rollout (Day 439)

Data as at:
07 May 2022

The x-axis is truncated at the length of Australia's vaccination program. Countries with intermittent reporting have had their doses per 100 imputed to Australia's current stage of rollout. Israel excluded as it is beyond scale of the graph

Cumulative doses administered (07 May): **58,068,709**

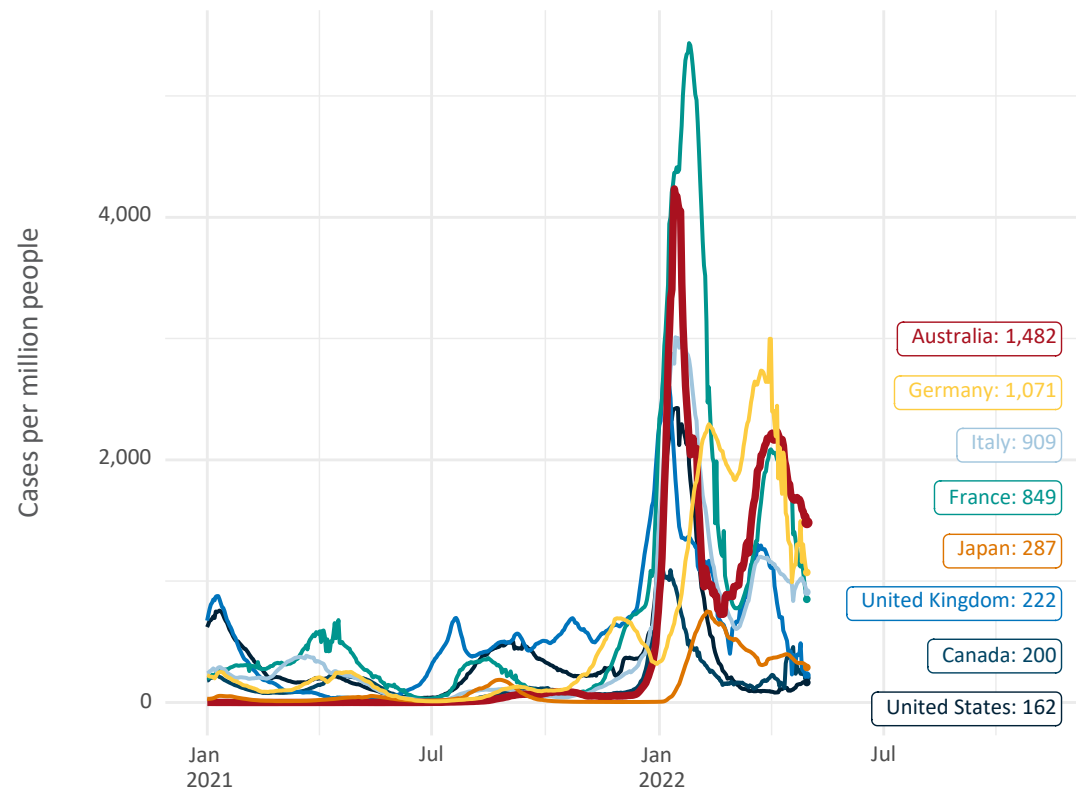


Note: From 11 January 2022, data for Australia includes all doses administered to people 5 and over. Prior to 11 January, data was for 12 and over.
Source: Department of Health (Australia), Our World in Data (international)
Latest data: 07 May

Most Recent International data – COVID-19

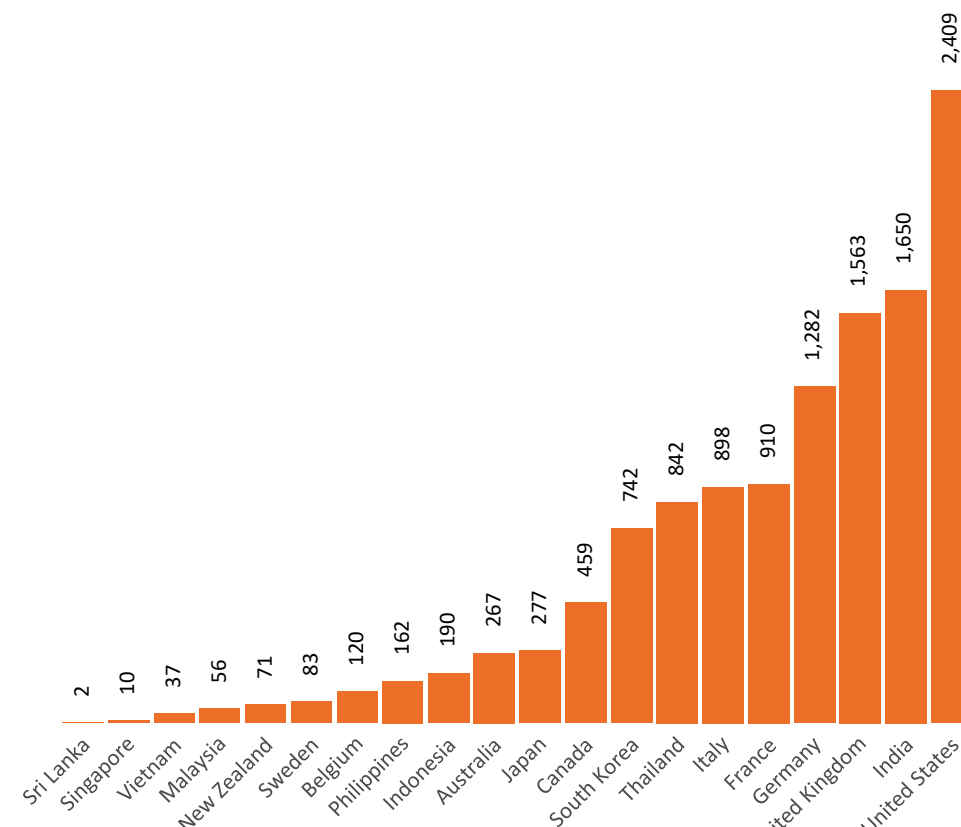
Data as at:
01 May 2022

New daily cases per million since 2021, Australia and G7 countries
Smoothed - 7 day average



Source: OWID
Data downloaded: 02 May 2022 09:33
Latest data: 30 Apr 2022

COVID-19 deaths in past 7 days - Australia and select countries



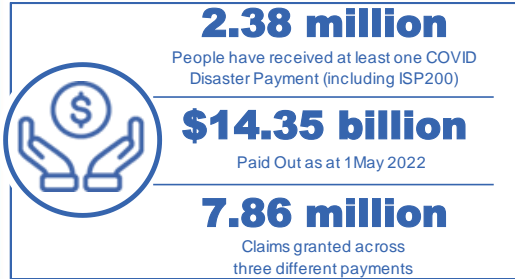
Source: OWID
Data downloaded: 02 May 2022 09:33
Latest data: 30 Apr 2022

Note: Data as at 01-05-22 due to irregularities in the OWID weekly deaths data.

Pandemic Response Payments

Australia's COVID-19
Vaccine Roadmap

Data as at midnight: 1 May 2022
Updated weekly



COVID Disaster Payment:	5.89 million claims received - 2.19 million individuals paid a total of \$12.59 billion.
\$200 Income Support Payment:	353,000 claims received - 183,000 individuals paid a total of \$268.9 million.
Pandemic Leave Disaster Payment:	2.12 million claims received - 1.29 million individuals paid a total of \$1.49 billion.



COVID Disaster Payment

assisting during a lockdown event in a Commonwealth hotspot.

Income Support Payment \$200

for income support recipients who lost at least 8 hours of work.

Pandemic Leave Disaster Payment

for those who have to self-isolate, quarantine or care.

For more information visit:
servicesaustralia.gov.au

COVID-19 DISASTER PAYMENTS

Northern Territory

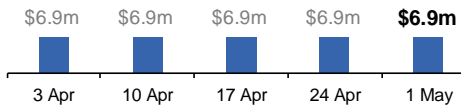
Lockdown (#3) from 16 Nov to 22 Nov
Claiming period ended 27 Dec

7,500 people have received at least one COVID Disaster Payment.

\$6.9m paid out as at 1 May 2022.

Nil paid in initial payments in the week ending 1 May 2022.

Cumulative payments made by Territory since activation on 25 Aug 2021.



Victoria

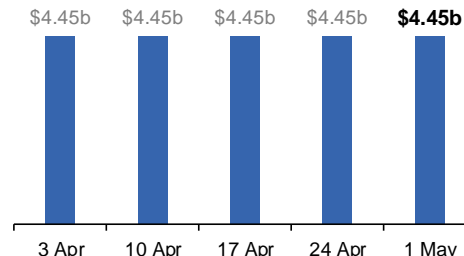
Lockdown (#6) from 6 Aug to 28 Oct
Claiming period ended 9 Dec

745,000 people have received at least one COVID Disaster Payment.

\$4.45b paid out as at 1 May 2022.

Nil paid in initial and reoccurring payments in the week ending 1 May 2022.

Cumulative payments made by State since activation on 8 Jun 2021.



New South Wales

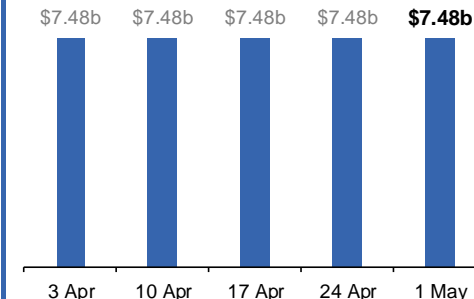
Lockdown from 24 Jun to 10 Oct
Claiming period ended 27 Nov

1.08m people have received at least one COVID Disaster Payment.

\$7.48b paid out as at 1 May 2022.

Nil paid in initial and reoccurring payments in the week ending 1 May 2022.

Cumulative payments made by State since activation on 1 Jul 2021.



Australian Capital Territory

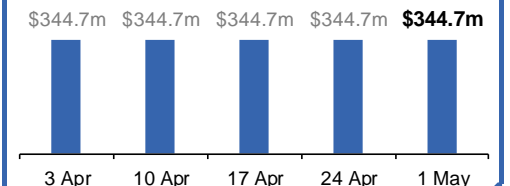
Lockdown from 12 Aug to 14 Oct
Claiming period ended 25 Nov

65,000 people have received at least one COVID Disaster Payment.

\$344.7m paid out as at 1 May 2022.

Nil paid in initial and reoccurring payments in the week ending 1 May 2022.

Cumulative payments made by Territory since activation on 20 Aug 2021.



Pandemic Response Payments (continued)

Data as at midnight: 1 May 2022
Updated weekly

COVID-19 DISASTER PAYMENTS

