



Australian Government
Operation COVID Shield

COVID-19 Vaccine Roll-out

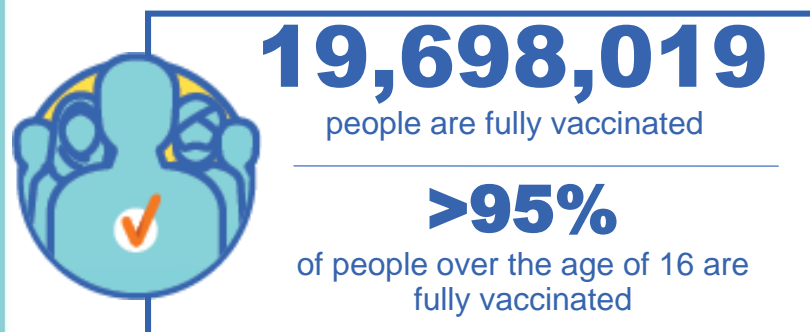
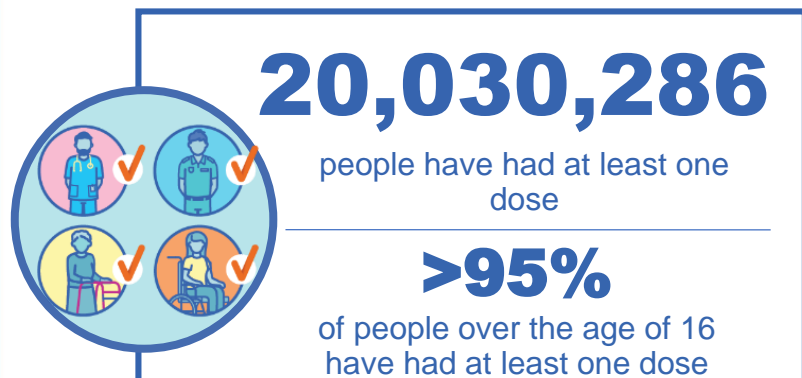
07 May 2022

Data as at:
06 May 2022

Total vaccine doses



58,047,792 total vaccine
doses administered nationally as at 06 May
+61,835 recorded in the last 24 hours



*Administration state breakdown indicates state in which a vaccine was administered

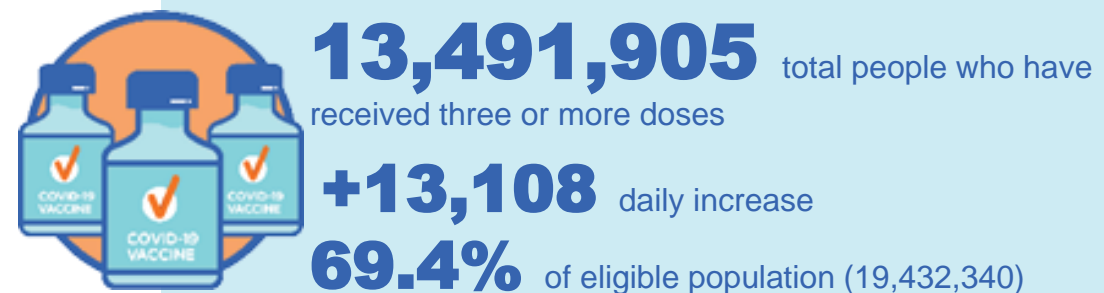
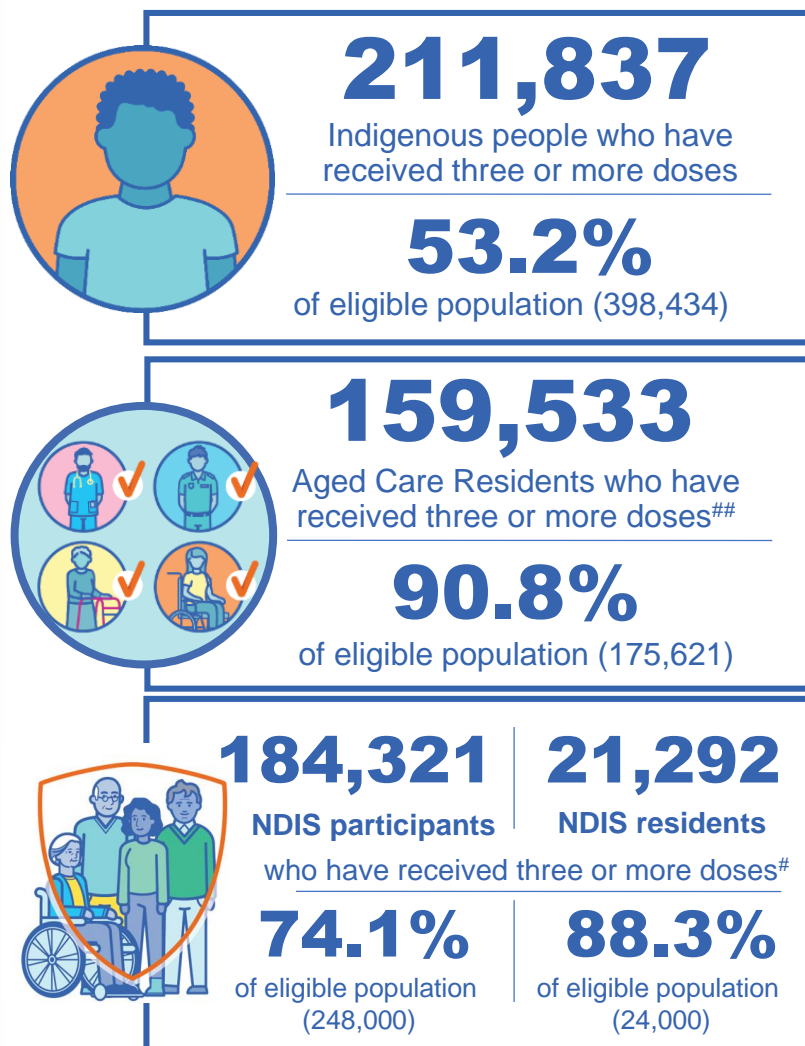
**Overall dose count includes instances of more than three doses per person in a small number of cases.

Source: Australian Immunisation Register

Booster Vaccinations

Australia's COVID-19
Vaccine Roadmap

Data as at:
06 May 2022



| | Number of People | Daily Increase | % of Eligible |
|-----|------------------|----------------|---------------|
| NSW | 4,121,236 | 3,823 | 66.6% |
| VIC | 3,610,137 | 2,824 | 71.5% |
| QLD | 2,334,858 | 2,437 | 62.7% |
| WA | 1,653,186 | 2,170 | 83.9% |
| SA | 955,953 | 905 | 72.6% |
| TAS | 308,316 | 320 | 72.2% |
| ACT | 267,399 | 246 | 77.5% |
| NT | 126,224 | 209 | 76.2% |

*People may belong to multiple groups and could be represented in the above breakdowns multiple times.
NDIS participants data as at 4 May 2022. ## Aged Care Residents data as at 6 May 2022.

Source: Australian Immunisation Register

114,596 doses administered to persons residing in other territories or with missing residential information

Winter / Fourth Doses

Data as at:
01 May 2022
Updated weekly

Australia's COVID-19
Vaccine Roadmap



500,924 total people (16+) who have received four or more doses

+155,095 weekly increase

| | Number of People 16+ | Weekly Increase |
|-----|----------------------|-----------------|
| ACT | 13,392 | 3,455 |
| NSW | 170,986 | 49,550 |
| NT | 2,973 | 656 |
| QLD | 96,536 | 31,058 |
| SA | 35,285 | 11,715 |
| TAS | 14,020 | 4,807 |
| VIC | 125,651 | 39,760 |
| WA | 39,626 | 13,349 |

2,455 doses administered to persons
residing in other territories or with
missing residential information

Source: Australian Immunisation Register

Vaccinations by residential location

Australia's COVID-19 Vaccine Roadmap

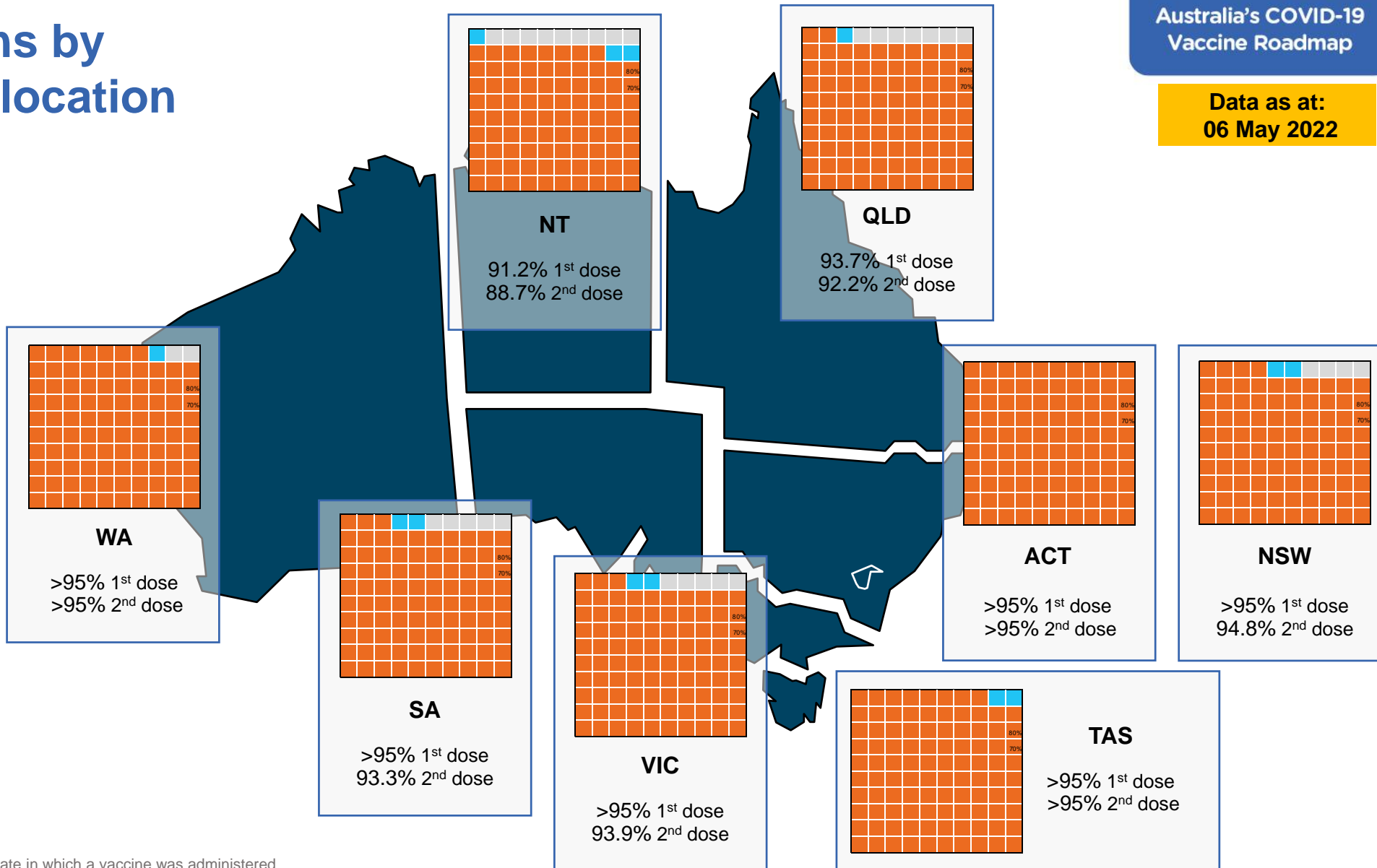
Data as at:
06 May 2022

First doses

| Age | Today | 4 weeks ago | 8 weeks ago |
|-----|-------|-------------|-------------|
| 16+ | >95% | >95% | >95% |
| 50+ | >95% | >95% | >95% |
| 70+ | >95% | >95% | >95% |

Fully vaccinated

| Age | Today | 4 weeks ago | 8 weeks ago |
|-----|-------|-------------|-------------|
| 16+ | >95% | >95% | >95% |
| 50+ | >95% | >95% | >95% |
| 70+ | >95% | >95% | >95% |



*Residential state may differ from the state in which a vaccine was administered

Commonwealth and Jurisdiction vaccine doses administered

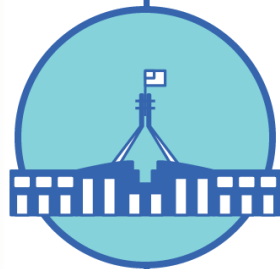
Data as at:
06 May 2022



58,047,792 total vaccine
doses administered nationally as at 06 May
+ 61,835 recorded in the last 24 hours



21,062,123
doses administered by state
and territory facilities
+ 6,821
recorded in the last 24 hours



36,985,669
doses administered by
commonwealth facilities
+ 55,014
recorded in the last 24 hours

35,706,494 total vaccine doses
administered in primary care settings
1,279,175 total vaccine doses
administered in aged care and disability
settings

| NSW | Jurisdictions | Commonwealth |
|----------------|---------------|--------------|
| Cumulative | 5,106,319 | 12,902,288 |
| Daily increase | 1,180 | 17,090 |

| VIC | Jurisdictions | Commonwealth |
|----------------|---------------|--------------|
| Cumulative | 6,067,516 | 9,195,332 |
| Daily increase | 1,555 | 13,091 |

| QLD | Jurisdictions | Commonwealth |
|----------------|---------------|--------------|
| Cumulative | 3,840,712 | 7,140,834 |
| Daily increase | 720 | 11,320 |

| WA | Jurisdictions | Commonwealth |
|----------------|---------------|--------------|
| Cumulative | 2,497,184 | 3,886,388 |
| Daily increase | 1,151 | 6,135 |

| TAS | Jurisdictions | Commonwealth |
|----------------|---------------|--------------|
| Cumulative | 620,722 | 688,438 |
| Daily increase | 135 | 1,298 |

| SA | Jurisdictions | Commonwealth |
|----------------|---------------|--------------|
| Cumulative | 1,806,989 | 2,199,924 |
| Daily increase | 1,279 | 3,812 |

| ACT | Jurisdictions | Commonwealth |
|----------------|---------------|--------------|
| Cumulative | 781,315 | 734,593 |
| Daily increase | 579 | 1,968 |

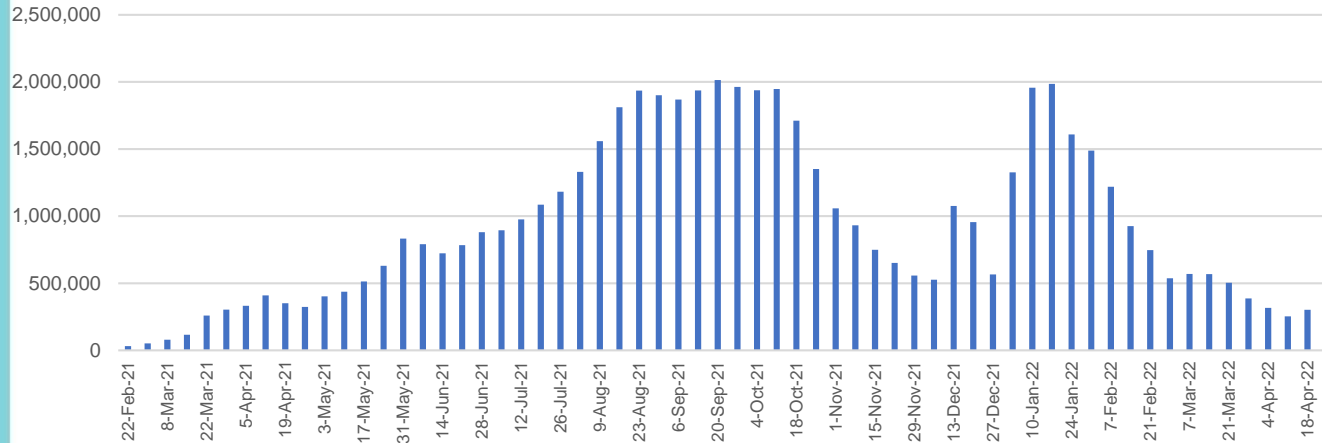
| NT | Jurisdictions | Commonwealth |
|----------------|---------------|--------------|
| Cumulative | 341,366 | 237,872 |
| Daily increase | 222 | 300 |

Vaccine milestone charts

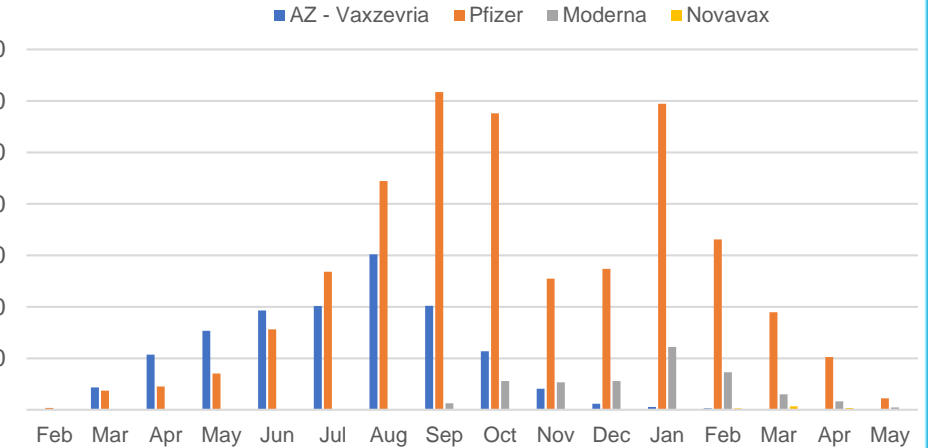
Data as at:
06 May 2022

Australia's COVID-19
Vaccine Roadmap

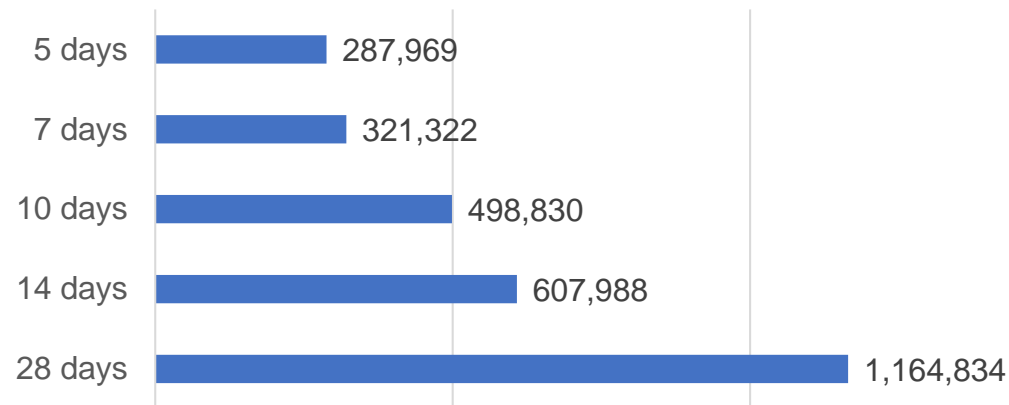
Doses Administered by Week



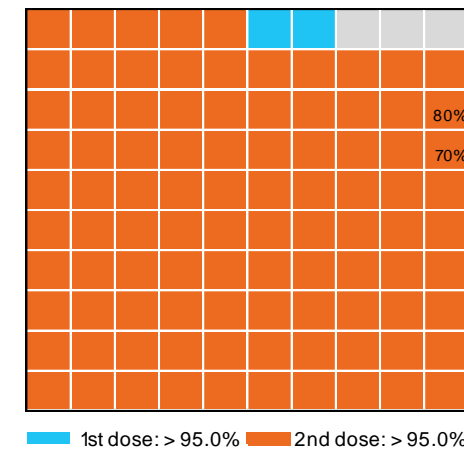
Doses by administration month and vaccine type



Doses Reported



Eligible population percentage coverage



*Each square represents 1% of the national population.
Squares are filled as milestones are achieved.

*Sourced from the Australian Immunisation Register.

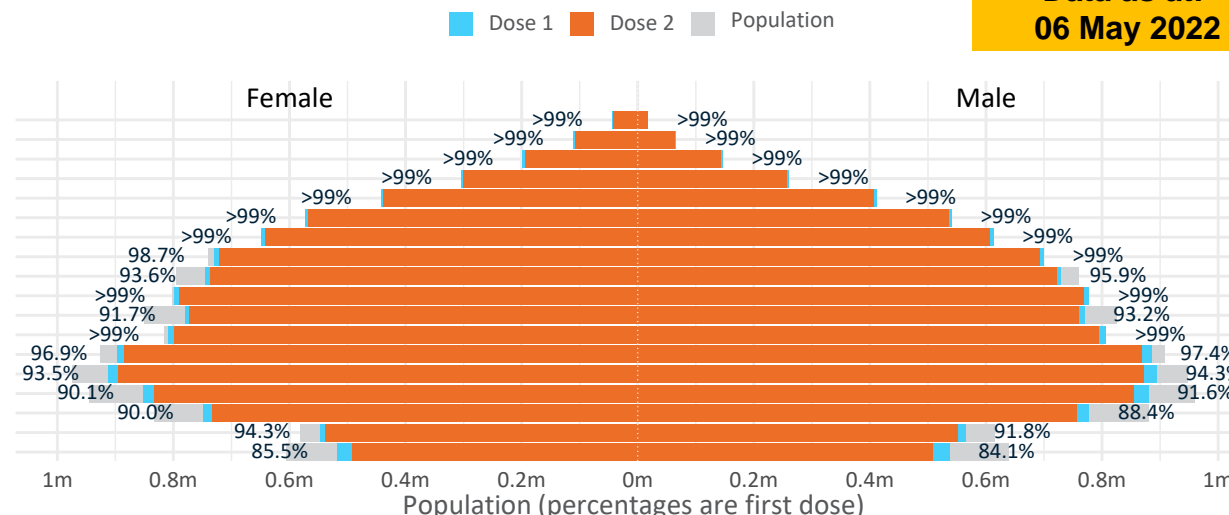
Data as at:
06 May 2022

Doses by age and sex

First and second doses by age and sex

| | 16+ | 50+ | 12-15 | 5-11 |
|--------|---|---|---|---|
| Dose 1 | 97.14% (20,030,286 doses / 20,619,959 people) | >99% (8,868,693 doses / 8,749,703 people) | 84.81% (1,055,047 doses / 1,243,990 people) | 52.82% (1,202,500 doses / 2,276,638 people) |
| Dose 2 | 95.53% (19,698,019 doses / 20,619,959 people) | >99% (8,762,352 doses / 8,749,703 people) | 80.42% (1,000,436 doses / 1,243,990 people) | 37.42% (851,930 doses / 2,276,638 people) |

| Age | Dose 1 | Dose 2 |
|-------|-------------------|-------------------|
| 95+ | 62,487 (>99%) | 59,096 (>99%) |
| 90-94 | 177,912 (>99%) | 172,297 (>99%) |
| 85-89 | 345,030 (>99%) | 338,066 (>99%) |
| 80-84 | 565,206 (>99%) | 557,939 (>99%) |
| 75-79 | 854,107 (>99%) | 845,747 (>99%) |
| 70-74 | 1,115,041 (>99%) | 1,104,020 (>99%) |
| 65-69 | 1,264,398 (>99%) | 1,250,189 (>99%) |
| 60-64 | 1,431,419 (>99%) | 1,415,301 (98.5%) |
| 55-59 | 1,475,626 (94.9%) | 1,459,166 (93.8%) |
| 50-54 | 1,577,467 (>99%) | 1,560,531 (>99%) |
| 45-49 | 1,551,791 (92.5%) | 1,533,304 (91.4%) |
| 40-44 | 1,618,235 (>99%) | 1,594,205 (98.4%) |
| 35-39 | 1,788,021 (97.4%) | 1,756,170 (95.7%) |
| 30-34 | 1,814,908 (94.3%) | 1,773,525 (92.2%) |
| 25-29 | 1,742,455 (91.4%) | 1,695,298 (88.9%) |
| 20-24 | 1,532,984 (89.5%) | 1,493,841 (87.2%) |
| 16-19 | 1,113,199 (93.1%) | 1,089,324 (91.1%) |
| 12-15 | 1,055,047 (84.8%) | 1,000,436 (80.4%) |

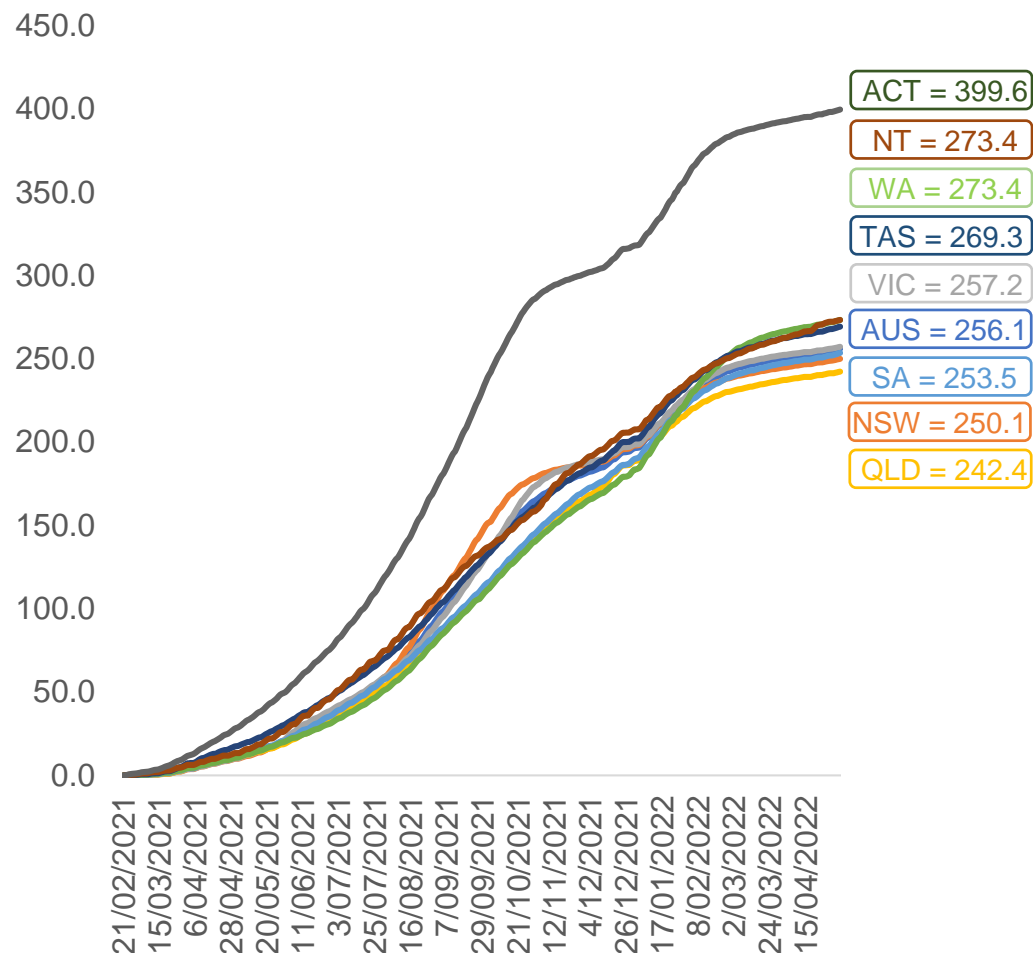


| | AUS | ACT | NSW | NT | QLD | SA | TAS | VIC | WA |
|---------------------------|-------------|---------|-----------|---------|-----------|-----------|---------|-----------|-----------|
| 16 and over - dose 1 | 20,030,286 | 352,244 | 6,319,547 | 173,793 | 3,854,460 | 1,373,143 | 444,493 | 5,154,058 | 2,091,989 |
| 16 and over - dose 2 | 19,698,019 | 346,717 | 6,223,994 | 169,058 | 3,790,559 | 1,343,765 | 435,381 | 5,077,692 | 2,060,622 |
| 16 and over - population | 20,619,959* | 344,037 | 6,565,651 | 190,571 | 4,112,707 | 1,440,400 | 440,172 | 5,407,574 | 2,114,978 |
| 16 and over % with dose 1 | 97.14% | >99% | 96.25% | 91.20% | 93.72% | 95.33% | >99% | 95.31% | 98.91% |
| 16 and over % with dose 2 | 95.53% | >99% | 94.80% | 88.71% | 92.17% | 93.29% | 98.91% | 93.90% | 97.43% |
| 5 to 11 - dose 1 | 1,202,500 | 31,961 | 358,603 | 13,242 | 209,002 | 84,337 | 28,773 | 327,043 | 141,608 |
| 5 to 11 - dose 2 | 851,930 | 26,329 | 257,791 | 8,069 | 143,572 | 60,371 | 22,633 | 233,282 | 95,476 |
| 5 to 11 - population | 2,276,638 | 39,789 | 716,460 | 24,750 | 478,731 | 148,816 | 45,033 | 578,499 | 244,154 |
| 5 to 11 % with dose 1 | 52.82% | 80.33% | 50.05% | 53.50% | 43.66% | 56.67% | 63.89% | 56.53% | 58.00% |
| 5 to 11 % with dose 2 | 37.42% | 66.17% | 35.98% | 32.60% | 29.99% | 40.57% | 50.26% | 40.33% | 39.10% |
| 12 to 15 - dose 1 | 1,055,047 | 20,096 | 324,537 | 10,840 | 206,965 | 68,457 | 22,948 | 275,545 | 115,975 |
| 12 to 15 - dose 2 | 1,000,436 | 19,563 | 310,407 | 9,780 | 193,987 | 64,881 | 21,866 | 263,996 | 107,503 |
| 12 to 15 - population | 1,243,990 | 19,693 | 390,330 | 13,060 | 270,146 | 82,747 | 26,308 | 308,611 | 132,869 |
| 12 to 15 % with dose 1 | 84.81% | >99% | 83.14% | 83.00% | 76.61% | 82.73% | 87.23% | 89.29% | 87.29% |
| 12 to 15 % with dose 2 | 80.42% | >99% | 79.52% | 74.89% | 71.81% | 78.41% | 83.12% | 85.54% | 80.91% |

*National population will not equal sum of listed jurisdictions due to a small number of people counted in national population residing in some 'other' territories. Sum of state doses will not add to national total as some records are unable to be geocoded to a State or Territory.
Doses sourced from Australian Immunisation Register, population from ABS ERP June 2020

Vaccinations by location

Cumulative total doses administered vs eligible state populations*

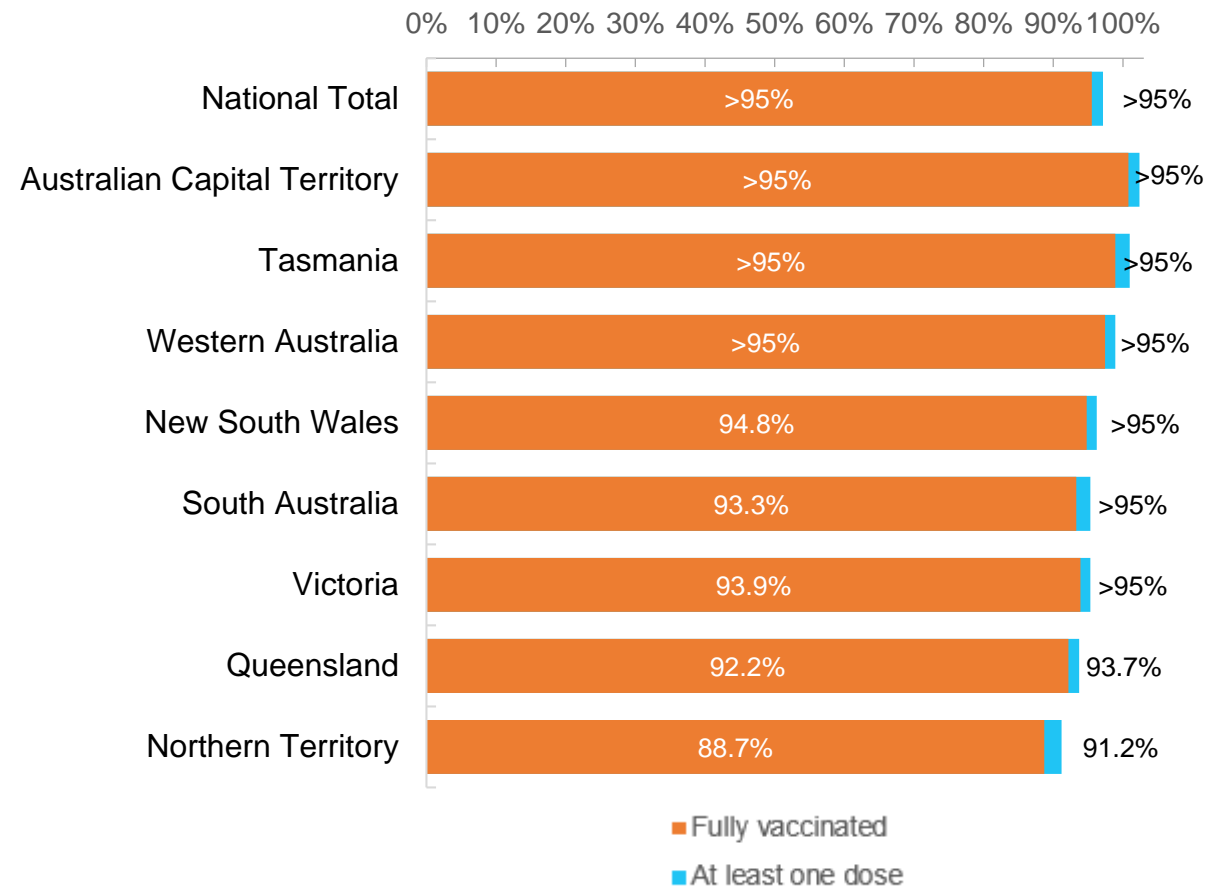


*Not an indication of percentage vaccinated, numbers will exceed 100 due to multiple doses required per person of the population. All doses are included for those aged 12 and above, and are based on vaccination provider location.

Data as at:
06 May 2022

Australia's COVID-19
Vaccine Roadmap

First and Second Doses by residential location



Aboriginal and Torres Strait Islander peoples

Number of people vaccinated

Data as at:
03 May 2022
Updated weekly

Australia's COVID-19
Vaccine Roadmap



439,739

people over the age of 16
have had at least one dose

84.5%

of people over the age of 16
have had at least one dose



420,457

people over the age of 16
are fully vaccinated

80.8%

of people over the age of 16 are
fully vaccinated



People aged 12 – 15 years

48,551

42,734

68.3%

At least one dose

60.1%

Fully vaccinated

178 Aboriginal community controlled health services (ACCHS)

0#

50

27

44

12

3

21

21

ACT

NSW

NT

QLD

SA

TAS

VIC

WA

| Medicare Address State ^{##} | Individuals Dose 1 | Individuals Dose 1 % | Individuals Dose 2 | Individuals Dose 2 % |
|--------------------------------------|--------------------|----------------------|--------------------|----------------------|
| Australian Capital Territory | 4,791 | 90.9% | 4,672 | 88.7% |
| New South Wales | 135,024 | 86.7% | 131,916 | 84.8% |
| Northern Territory | 41,579 | 89.5% | 39,405 | 84.8% |
| Queensland | 115,558 | 81.4% | 110,018 | 77.5% |
| South Australia | 19,896 | 80.0% | 18,461 | 74.3% |
| Tasmania | 13,892 | 88.6% | 13,485 | 86.0% |
| Victoria | 35,452 | 89.8% | 34,662 | 87.8% |
| Western Australia | 53,624 | 86.3% | 49,606 | 79.8% |
| Unknown/Other Territories | 19,923 | 68.8% | 18,232 | 62.9% |
| Totals | 439,739 | 84.5% | 420,457 | 80.8% |

Source: Australian Immunisation Register

*Identifying as Aboriginal and Torres Strait Islander is optional and the estimated population may be under reported.

**Includes all Aboriginal and Torres Strait Islander peoples who have received a vaccination, not limited to those administered in an ACCHS setting

##ACCHS in the ACT are currently operating as a Commonwealth Vaccine Clinics so not included to avoid double counting

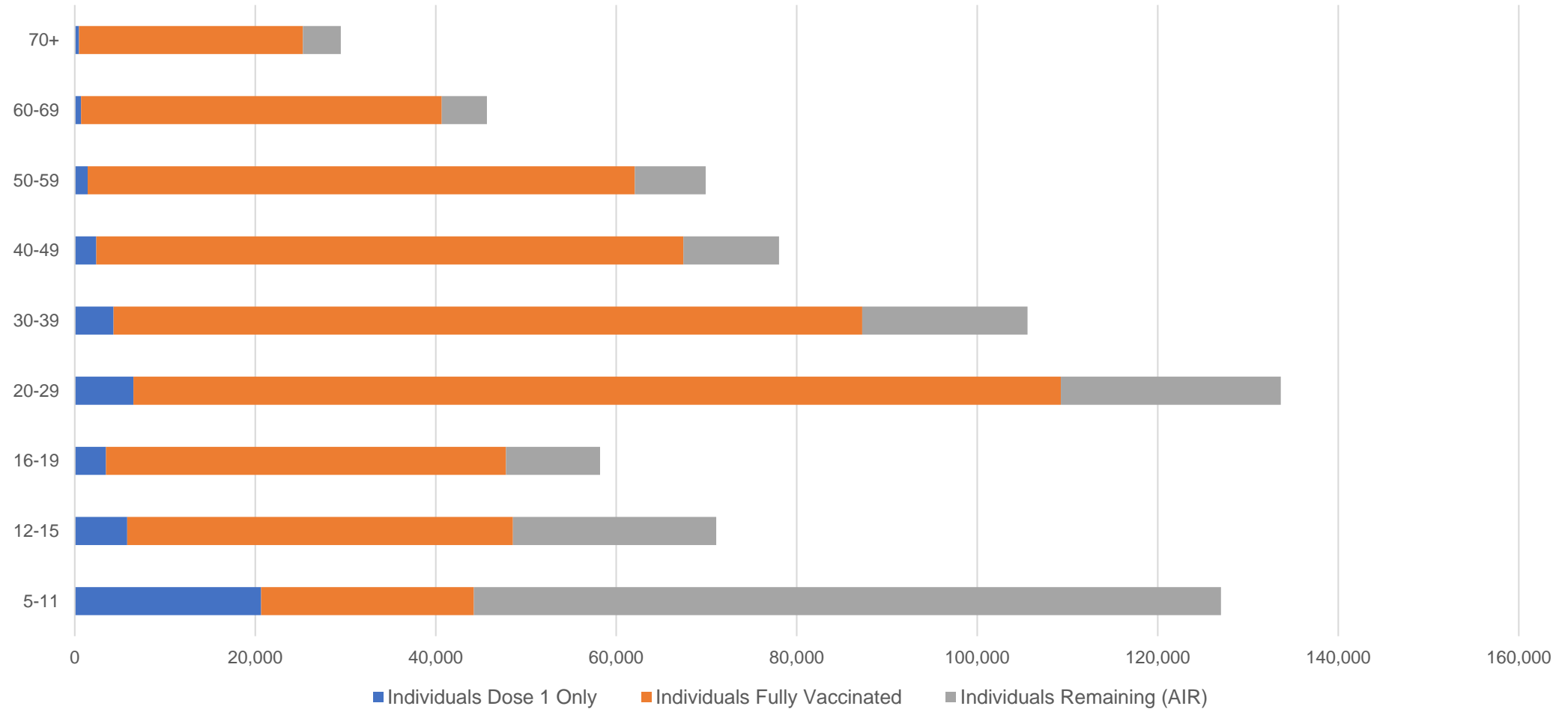
##The above table includes all identified Aboriginal and Torres Strait Islander people who are aged 16 and above by their state of residence.

Aboriginal and Torres Strait Islander peoples

Number of people vaccinated by age

Data as at:
03 May 2022
Updated weekly

Australia's COVID-19
Vaccine Roadmap



Source: Australian Immunisation Register

Commonwealth primary care

Data as at:
06 May 2022

Australia's COVID-19
Vaccine Roadmap



Primary care vaccine administration sites

| | | | |
|--------------|------------|------------|--------------|
| 5,803 | 128 | 178 | 3,599 |
| GPs | CVCs | ACCHS | Pharmacies |



35,706,494 total vaccine doses administered
primary care settings as at 06 May
+ 53,934 recorded in the last 24 hours

Primary care vaccinations by provider type

| | Doses administered | Daily increase | 7 day increase |
|--|--------------------|----------------|----------------|
| General Practice* includes other Commonwealth | 28,704,696 | 38,119 | 192,695 |
| Pharmacy | 7,001,798 | 15,815 | 81,646 |

NSW
12,343,444
(+17,197 daily increase)

VIC
8,876,506
(+12,761 daily increase)

QLD
6,861,683
(+11,532 daily increase)

WA
3,750,747
(+6,065 daily increase)

TAS
667,354
(+1,296 daily increase)

SA
2,119,701
(+3,591 daily increase)

ACT
562,993
(+1,012 daily increase)

NT
213,999
(+289 daily increase)

310,067

doses administered to persons
residing in other territories or with
missing residential information

*General practice includes Commonwealth Vaccination Clinics, Aboriginal Community Health Centres, Royal Flying Doctor Service and other Commonwealth vaccination facilities

Source: Australian Immunisation Register

Data as at:
06 May 2022

Commonwealth aged care and disability doses administered



1,279,175 (+ 1,080 last 24 hours)

Total vaccine doses administered in aged care and disability facilities as at 06 May

Number of doses administered as part of the Commonwealth aged and disability care rollout

NSW
560,442
(+249 daily increase)

VIC
237,479
(+372 daily increase)

QLD
203,462
(+141 daily increase)

WA
108,554
(+33 daily increase)

TAS
23,189
(<10 daily increase)

SA
84,334
(+65 daily increase)

ACT
17,358
(+117 daily increase)

NT
7,536
(<10 daily increase)

36,821

doses administered to persons
residing in other territories or with
missing residential information

*Sourced from the Australian Immunisation Register. Includes all persons vaccinated at participating residential aged care, disability and related industry settings.

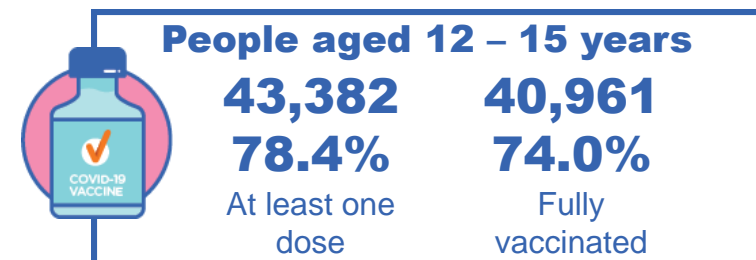
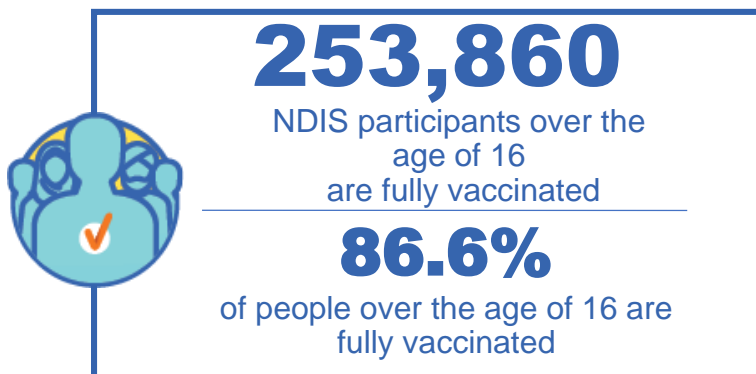
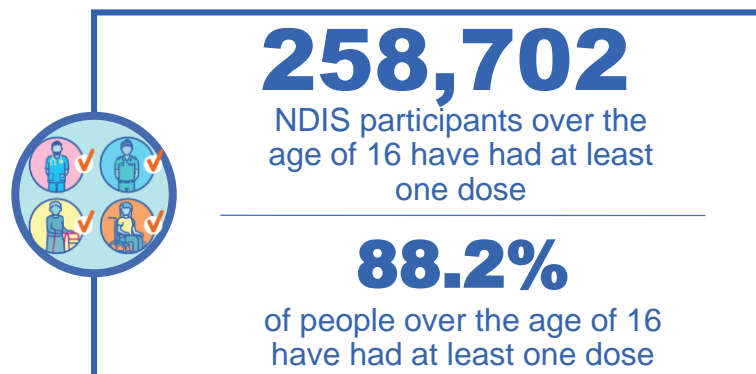
**State level breakdown indicates the residential location and may not align to the state in which the vaccination occurred.

Source: Australian Immunisation Register

National Disability Insurance Scheme (NDIS) reported vaccinations

Data as at:
05 May 2022
Updated weekly

Australia's COVID-19
Vaccine Roadmap



NDIS participant vaccinations

| | People aged 16+ with at least one dose | People aged 16+ fully vaccinated | % People aged 16+ with at least one dose | % People aged 16+ fully vaccinated |
|----------|--|----------------------------------|--|------------------------------------|
| ACT | 4,887 | 4,821 | 90.1% | 88.9% |
| NSW | 79,401 | 78,110 | 88.5% | 87.1% |
| NT | 2,237 | 2,164 | 78.4% | 75.8% |
| QLD | 51,060 | 50,087 | 86.8% | 85.1% |
| SA | 21,131 | 20,611 | 86.1% | 84.0% |
| TAS | 6,475 | 6,321 | 88.1% | 86.0% |
| VIC | 68,808 | 67,594 | 89.4% | 87.8% |
| WA | 24,703 | 24,152 | 89.7% | 87.7% |
| National | 258,702 | 253,860 | 88.2% | 86.6% |

Source: Linkage between National Disability Insurance Agency data and the Australian Immunisation Register. Total NDIS participant numbers as at 28 February. Australian Immunisation Register data as at 4 May. Includes all participants regardless of residence type.

National Disability Insurance Scheme (NDIS) reported vaccinations

Data as at:
05 May 2022
Updated Weekly

Australia's COVID-19
Vaccine Roadmap

| NATIONAL | Total people with at least one dose | People fully vaccinated | Total number of individuals in cohort | % People with at least one dose | % People fully vaccinated |
|--|-------------------------------------|-------------------------|---------------------------------------|---------------------------------|---------------------------|
| NDIS participants living in disability accommodation | 20,790 | 20,450 | 23,352 | 89.0% | 87.6% |

NDIS participants in disability and aged care accommodation



Source: Linkage between National Disability Insurance Agency data and the Australian Immunisation Register. Includes participants residing in disability accommodation only.

Source: Total NDIS participant numbers as at 28 February. Participant data as at 4 May. Australian Immunisation Register data as at 4 May. Worker data as at 4 May.

NDIS workforce vaccinations

| | NDIS workers with at least one dose | NDIS workers fully vaccinated | % NDIS workers with at least one dose | % NDIS workers fully vaccinated |
|--------------|-------------------------------------|-------------------------------|---------------------------------------|---------------------------------|
| NSW | 121,713 | 117,437 | 98.2% | 94.8% |
| VIC | 116,092 | 112,390 | 98.3% | 95.2% |
| QLD | 69,687 | 68,782 | 97.5% | 96.3% |
| WA | 32,669 | 31,051 | 97.8% | 93.0% |
| SA | 35,437 | 33,033 | 98.5% | 91.8% |
| TAS | 10,733 | 10,504 | 99.5% | 97.4% |
| ACT | 3,511 | 3,469 | 99.0% | 97.8% |
| NT | 3,442 | 3,293 | 99.4% | 95.1% |
| TOTAL | 393,284 | 379,959 | 98.2% | 94.8% |

Source: the NDIS Commission has established a requirement for registered NDIS providers who provide intensive disability support services to report on the vaccination status of workers they employ, or otherwise engage, to deliver NDIS-funded supports and services, and who are required to be vaccinated in accordance with in-force state and territory public health orders. The statistics reflect data reported to the NDIS Commission by registered NDIS providers and should be considered indicative and subject to change

Note: Some registered NDIS providers are yet to report on the vaccination status of their workforce. The NDIS Commission is working with those providers around reporting requirements.

Remaining workers not included include those exempt from vaccination requirements, workers whose vaccination status is not yet verified by the provider (such as workers on leave) and provider reporting anomalies.

Residential aged care vaccination rollout

Residential aged care facilities status

175,621

People fully vaccinated

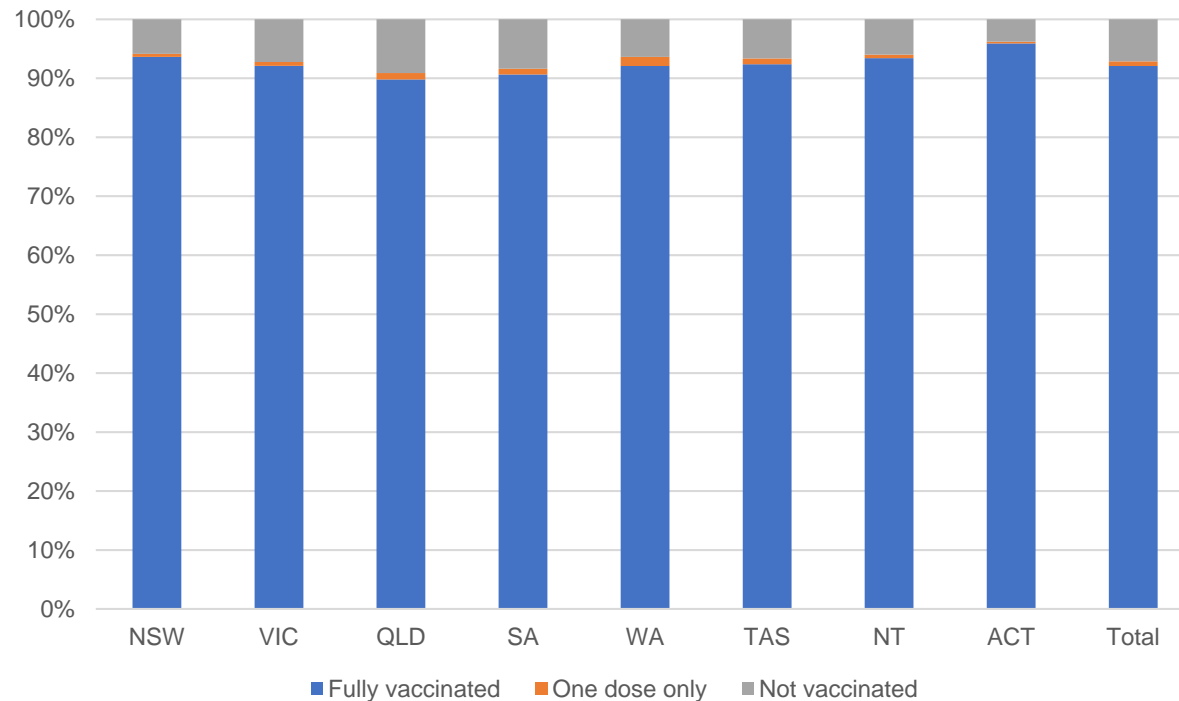
177,159

People with at least one dose

Australia's COVID-19 Vaccine Roadmap

Data as at:
05 May 2022
Updated weekly

Aged care resident vaccinations



Aged care worker vaccinations

| Jurisdictions | Total workers with at least one dose | Workers fully vaccinated | % Workers with at least one dose | % Workers fully vaccinated |
|---------------|--------------------------------------|--------------------------|----------------------------------|----------------------------|
| NSW | 77,184 | 77,177 | 99.2% | 99.2% |
| VIC | 67,521 | 67,519 | 97.5% | 97.5% |
| QLD | 46,922 | 46,919 | 98.1% | 98.1% |
| SA | 26,672 | 26,656 | 98.1% | 98.1% |
| WA | 24,253 | 24,251 | 100.0% | 100.0% |
| TAS | 7,459 | 7,459 | 100.0% | 100.0% |
| NT | 895 | 895 | 100.0% | 100.0% |
| ACT | 2,860 | 2,860 | 96.7% | 96.7% |
| Total | 253,766 | 253,736 | 98.5% | 98.5% |

Source: My Aged Care Portal vaccination progress

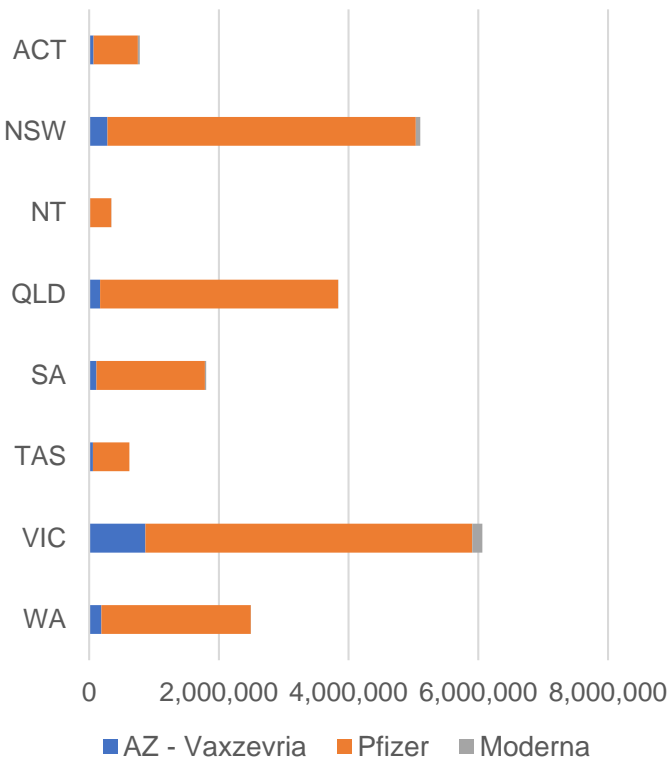
*Status updates are provided by facilities at least once per week. Reporting is updated Monday to Friday to encompass different facility updates being made on different days.

Data is sourced directly from Aged Care Service Providers and is not drawn or closely aligned with data from AIR due to inconsistencies and potential lags in uploading of records.

Data as at:
06 May 2022

Jurisdiction administered

Total vaccine doses administered in State and Territory clinics as at 06 May



21,062,123 total vaccine doses administered
in State and Territory clinics as at 06 May
+ **6,821** recorded in the last 24 hours
+ **43,282** recorded in the last 7 days

NSW
5,106,319
(+1,180 daily
increase)

VIC
6,067,516
(+1,555 daily
increase)

QLD
3,840,712
(+720 daily
increase)

WA
2,497,184
(+1,151 daily
increase)

TAS
620,722
(+135 daily
increase)

SA
1,806,989
(+1,279 daily
increase)

ACT
781,315
(+579 daily
increase)

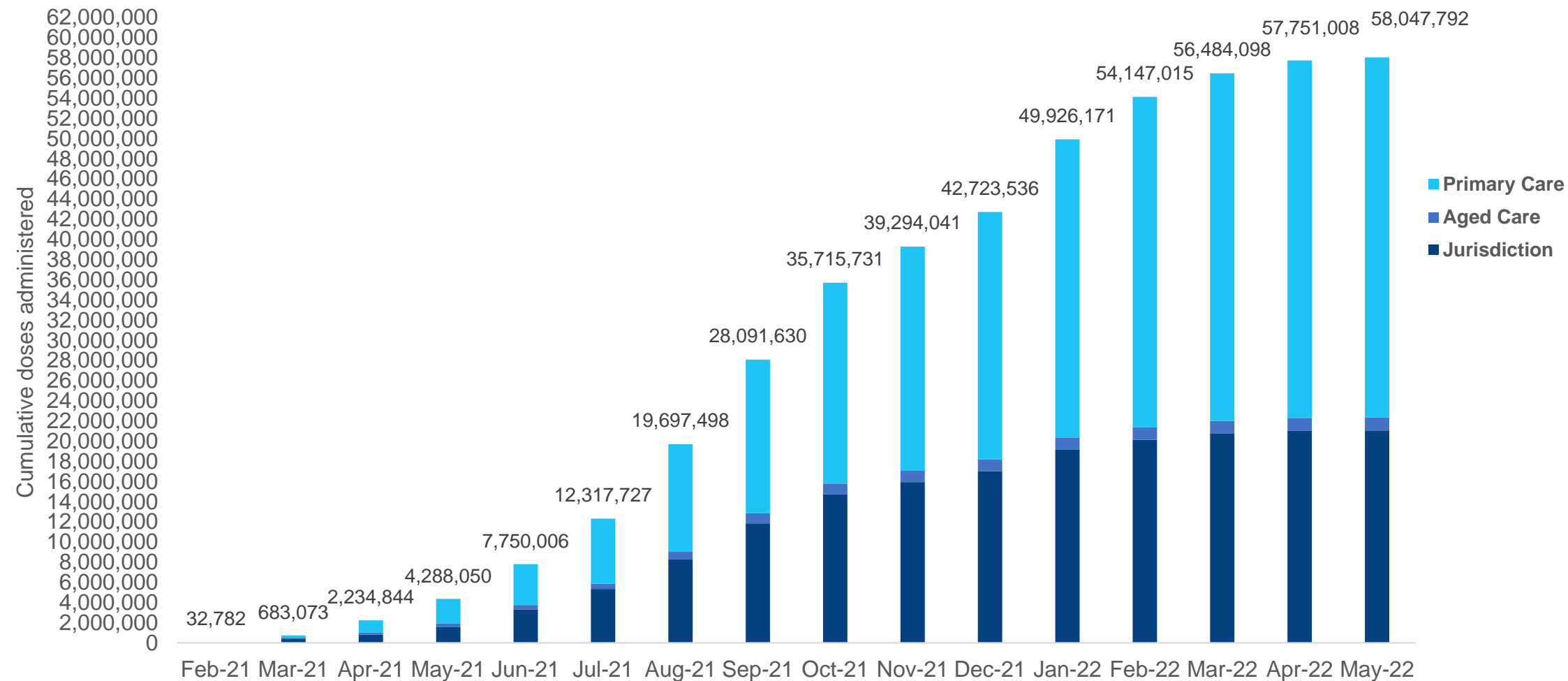
NT
341,366
(+222 daily
increase)

*Sourced from the Australian Immunisation Register. Numbers are calculated as difference in daily cumulative reported numbers to allow for historical corrections.

Source: Australian Immunisation Register

Cumulative doses administered by channel

Data as at:
06 May 2022



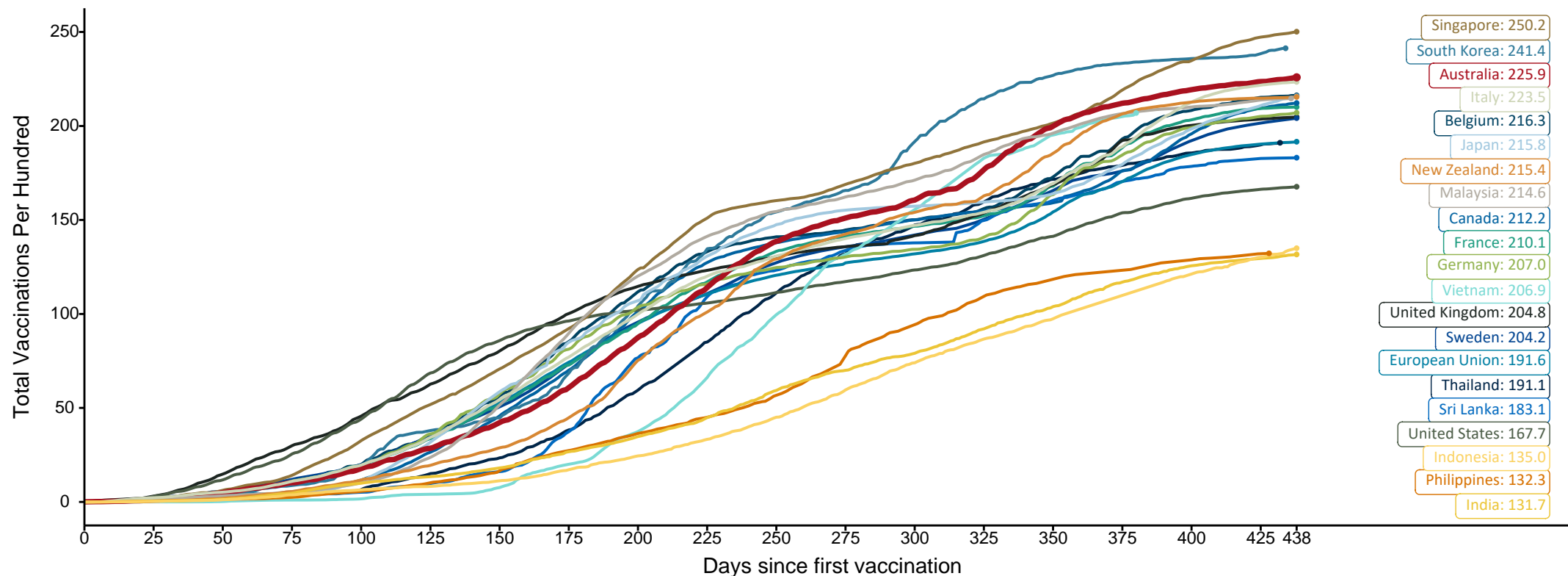
Source: Australian Immunisation Register

Doses at equivalent stages of rollout (Day 438)

Data as at:
06 May 2022

The x-axis is truncated at the length of Australia's vaccination program. Countries with intermittent reporting have had their doses per 100 imputed to Australia's current stage of rollout. Israel excluded as it is beyond scale of the graph

Cumulative doses administered (06 May): **58,047,792**



Note: From 11 January 2022, data for Australia includes all doses administered to people 5 and over. Prior to 11 January, data was for 12 and over.

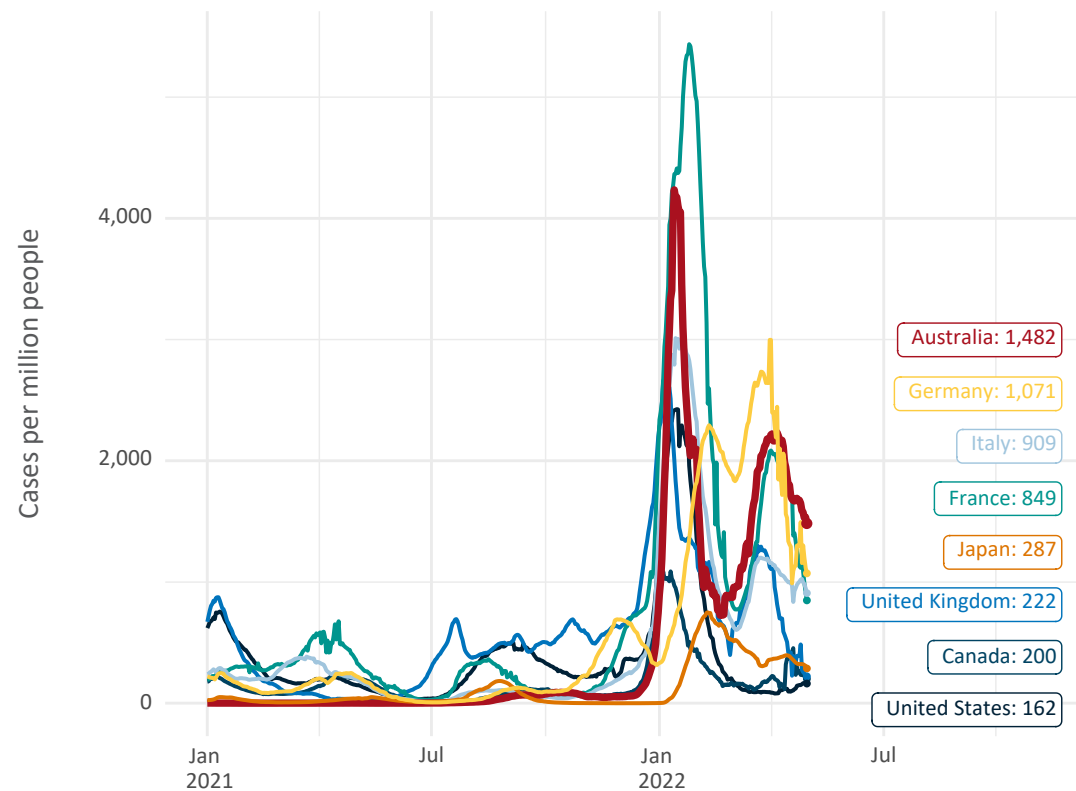
Source: Department of Health (Australia), Our World in Data (international)

Latest data: 06 May

Most Recent International data – COVID-19

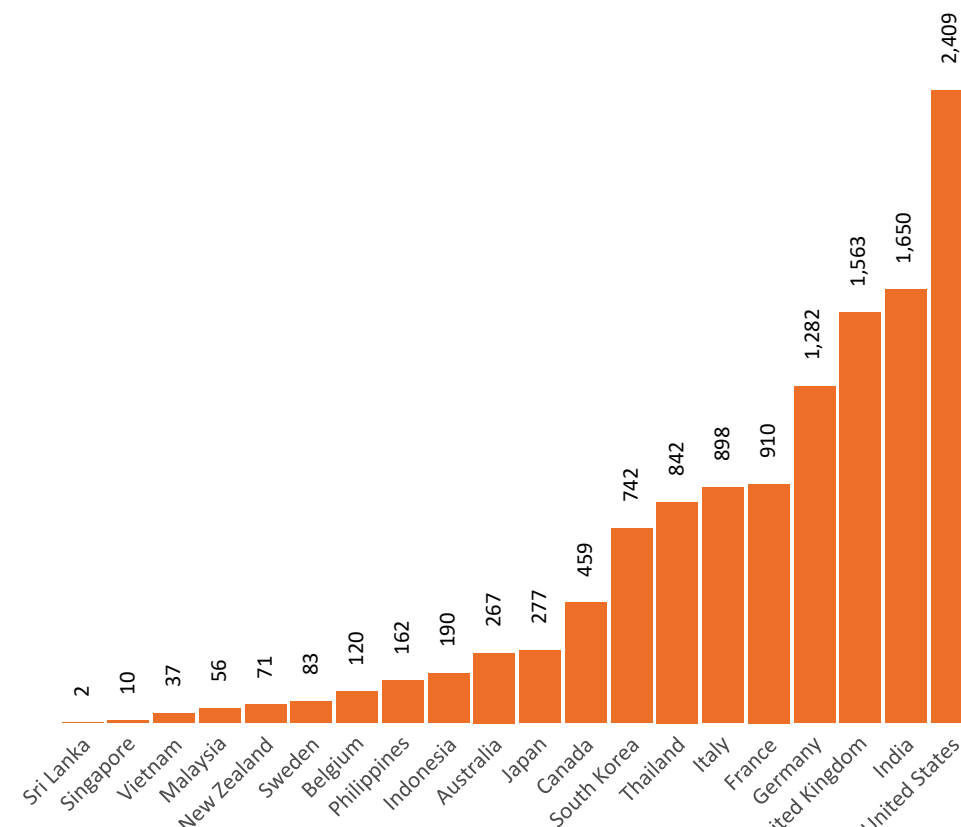
Data as at:
01 May 2022

New daily cases per million since 2021, Australia and G7 countries
Smoothed - 7 day average



Source: OWID
Data downloaded: 02 May 2022 09:33
Latest data: 30 Apr 2022

COVID-19 deaths in past 7 days - Australia and select countries



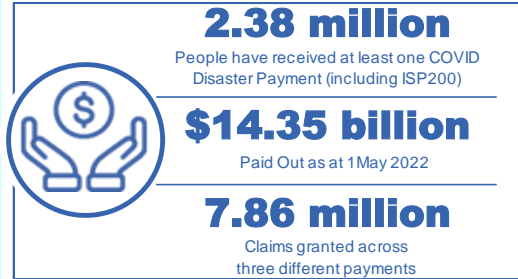
Source: OWID
Data downloaded: 02 May 2022 09:33
Latest data: 30 Apr 2022

Note: Data as at 01-05-22 due to irregularities in the OWID weekly deaths data.

Pandemic Response Payments

Australia's COVID-19
Vaccine Roadmap

Data as at midnight: 1 May 2022
Updated weekly



| | |
|---|--|
| COVID Disaster Payment: | 5.89 million claims received - 2.19 million individuals paid a total of \$12.59 billion. |
| \$200 Income Support Payment: | 353,000 claims received - 183,000 individuals paid a total of \$268.9 million. |
| Pandemic Leave Disaster Payment: | 2.12 million claims received - 1.29 million individuals paid a total of \$1.49 billion. |



COVID Disaster Payment

assisting during a lockdown event in a Commonwealth hotspot.

Income Support Payment \$200

for income support recipients who lost at least 8 hours of work.

Pandemic Leave Disaster Payment

for those who have to self-isolate, quarantine or care.

For more information visit:
servicesaustralia.gov.au

COVID-19 DISASTER PAYMENTS

Northern Territory

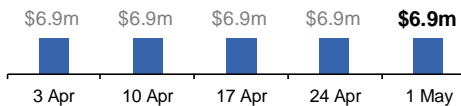
Lockdown (#3) from 16 Nov to 22 Nov
Claiming period ended 27 Dec

7,500 people have received at least one COVID Disaster Payment.

\$6.9m paid out as at 1 May 2022.

Nil paid in initial payments in the week ending 1 May 2022.

Cumulative payments made by Territory since activation on 25 Aug 2021.



Victoria

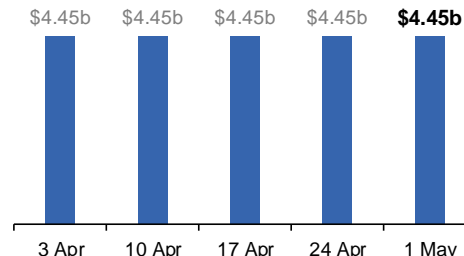
Lockdown (#6) from 6 Aug to 28 Oct
Claiming period ended 9 Dec

745,000 people have received at least one COVID Disaster Payment.

\$4.45b paid out as at 1 May 2022.

Nil paid in initial and reoccurring payments in the week ending 1 May 2022.

Cumulative payments made by State since activation on 8 Jun 2021.



New South Wales

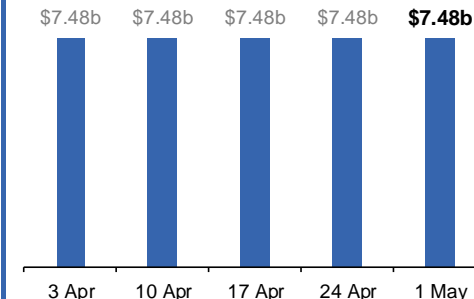
Lockdown from 24 Jun to 10 Oct
Claiming period ended 27 Nov

1.08m people have received at least one COVID Disaster Payment.

\$7.48b paid out as at 1 May 2022.

Nil paid in initial and reoccurring payments in the week ending 1 May 2022.

Cumulative payments made by State since activation on 1 Jul 2021.



Australian Capital Territory

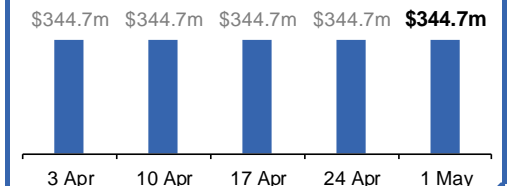
Lockdown from 12 Aug to 14 Oct
Claiming period ended 25 Nov

65,000 people have received at least one COVID Disaster Payment.

\$344.7m paid out as at 1 May 2022.

Nil paid in initial and reoccurring payments in the week ending 1 May 2022.

Cumulative payments made by Territory since activation on 20 Aug 2021.



Pandemic Response Payments (continued)

Data as at midnight: 1 May 2022
Updated weekly

COVID-19 DISASTER PAYMENTS

