



**Australian Government**  
**Operation COVID Shield**

# COVID-19 Vaccine Roll-out

06 May 2022

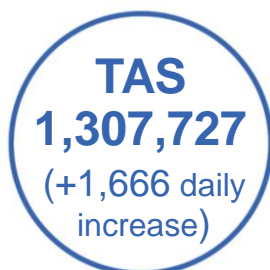
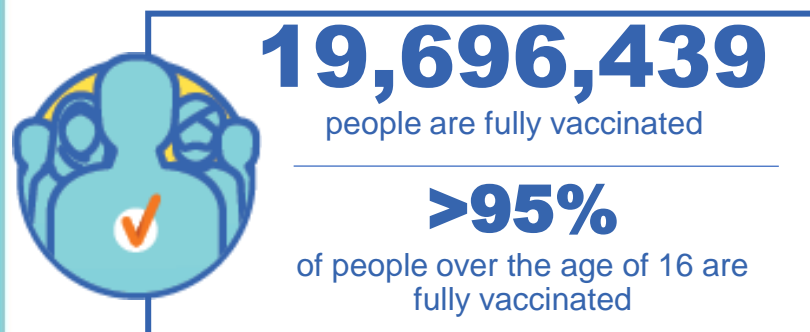
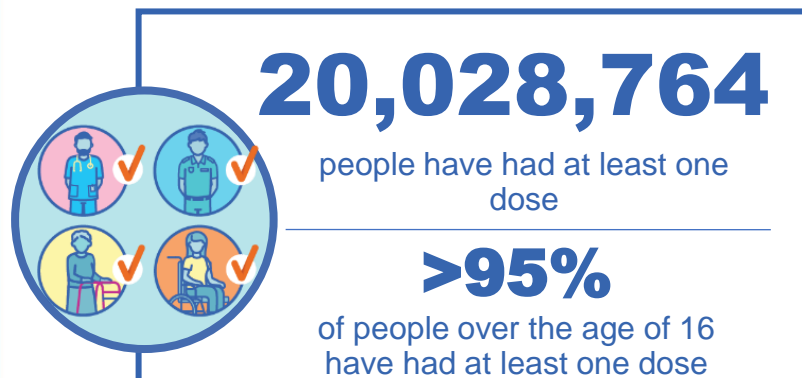
Data as at:  
05 May 2022

## Total vaccine doses



**57,985,957** total vaccine  
doses administered nationally as at 05 May

**+64,569** recorded in the last 24 hours



\*Administration state breakdown indicates state in which a vaccine was administered

\*\*Overall dose count includes instances of more than three doses per person in a small number of cases.

Source: Australian Immunisation Register

# Booster Vaccinations

Australia's COVID-19  
Vaccine Roadmap

Data as at:  
05 May 2022



**211,204**

Indigenous people who have  
received three or more doses

**53.0%**

of eligible population (398,211)



**159,600**

Aged Care Residents who have  
received three or more doses##

**91.2%**

of eligible population (175,065)



**184,009**

NDIS participants

who have received three or more doses#

**74.0%**

of eligible population  
(248,000)

**21,284**

NDIS residents

**88.2%**

of eligible population  
(24,000)



**13,478,797**

total people who have  
received three or more doses

**+13,653**

daily increase

**69.4%**

of eligible population (19,428,817)

	Number of People	Daily Increase	% of Eligible
NSW	4,117,413	3,615	66.5%
VIC	3,607,313	2,671	71.5%
QLD	2,332,421	2,379	62.7%
WA	1,651,016	2,715	83.9%
SA	955,048	1,028	72.6%
TAS	307,996	351	72.1%
ACT	267,153	204	77.4%
NT	126,015	256	76.1%

\*People may belong to multiple groups and could be represented in the above breakdowns multiple times.

# NDIS participants data as at 4 May 2022.

## Aged Care Residents data as at 5 May 2022.

Source: Australian Immunisation Register

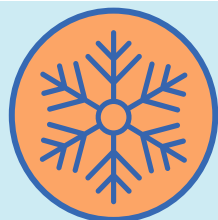
**114,422**

doses administered to persons  
residing in other territories or with  
missing residential information

# Winter / Fourth Doses

Data as at:  
01 May 2022  
Updated weekly

Australia's COVID-19  
Vaccine Roadmap



**500,924** total people (16+) who have received four or more doses

**+155,095** weekly increase

	Number of People 16+	Weekly Increase
ACT	13,392	3,455
NSW	170,986	49,550
NT	2,973	656
QLD	96,536	31,058
SA	35,285	11,715
TAS	14,020	4,807
VIC	125,651	39,760
WA	39,626	13,349

**2,455** doses administered to persons  
residing in other territories or with  
missing residential information

Source: Australian Immunisation Register

# Vaccinations by residential location

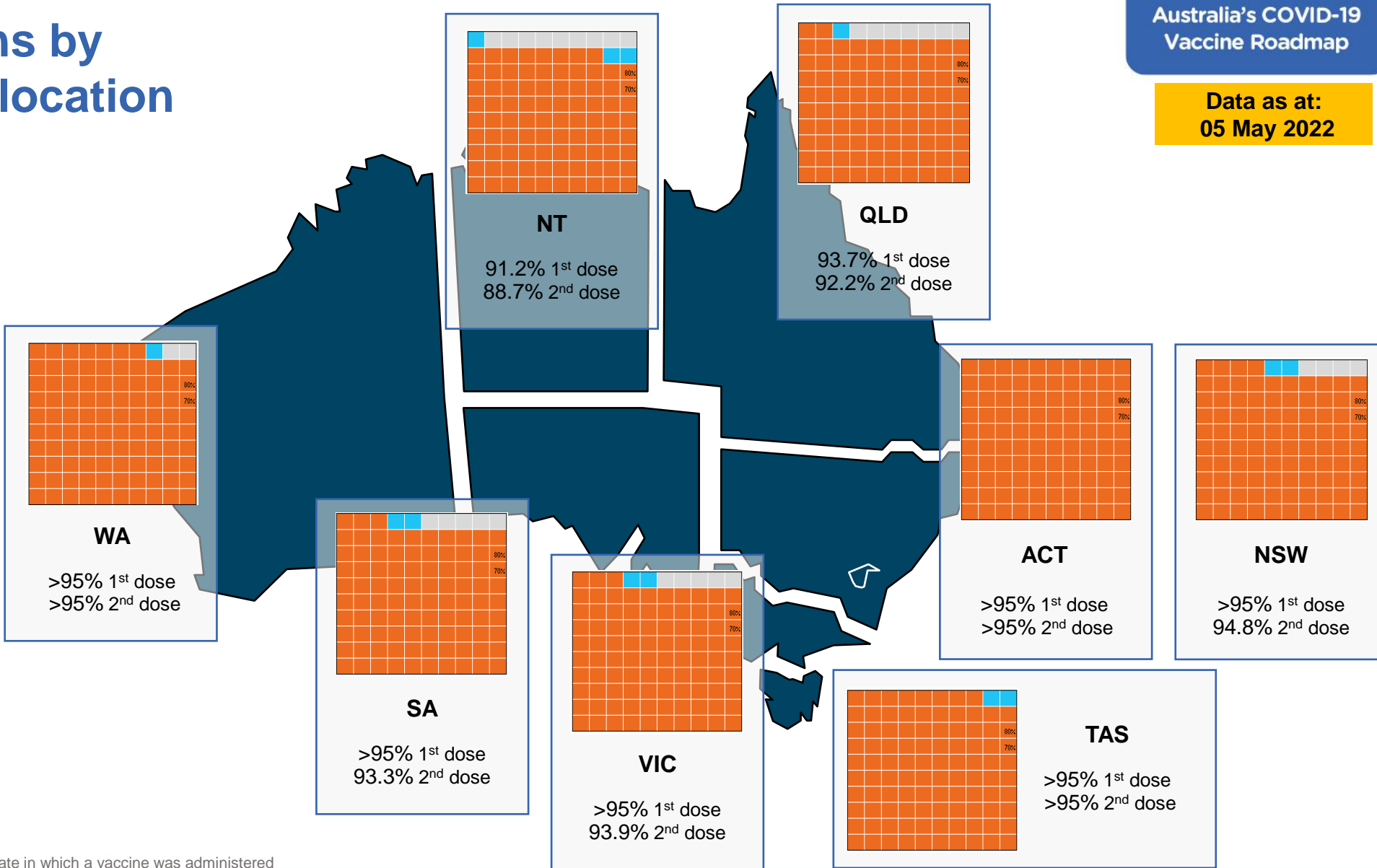
Data as at: 05 May 2022

## First doses

Age	Today	4 weeks ago	8 weeks ago
16+	>95%	>95%	>95%
50+	>95%	>95%	>95%
70+	>95%	>95%	>95%

## Fully vaccinated

Age	Today	4 weeks ago	8 weeks ago
16+	>95%	>95%	95.0%
50+	>95%	>95%	>95%
70+	>95%	>95%	>95%



\*Residential state may differ from the state in which a vaccine was administered

# Commonwealth and Jurisdiction vaccine doses administered

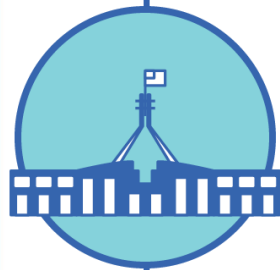
Data as at:  
05 May 2022



**57,985,957** total vaccine  
doses administered nationally as at 05 May  
**+ 64,569** recorded in the last 24 hours



**21,055,302**  
doses administered by state  
and territory facilities  
**+ 8,412**  
recorded in the last 24 hours



**36,930,655**  
doses administered by  
commonwealth facilities  
**+ 56,157**  
recorded in the last 24 hours

**35,652,560** total vaccine doses  
administered in primary care settings  
**1,278,095** total vaccine doses  
administered in aged care and disability  
settings

NSW	Jurisdictions	Commonwealth
Cumulative	5,105,139	12,885,198
Daily increase	1,020	17,961

VIC	Jurisdictions	Commonwealth
Cumulative	6,065,961	9,182,241
Daily increase	1,685	12,929

QLD	Jurisdictions	Commonwealth
Cumulative	3,839,992	7,129,514
Daily increase	735	11,978

WA	Jurisdictions	Commonwealth
Cumulative	2,496,033	3,880,253
Daily increase	2,338	6,243

TAS	Jurisdictions	Commonwealth
Cumulative	620,587	687,140
Daily increase	163	1,503

SA	Jurisdictions	Commonwealth
Cumulative	1,805,710	2,196,112
Daily increase	1,304	4,137

ACT	Jurisdictions	Commonwealth
Cumulative	780,736	732,625
Daily increase	877	1,029

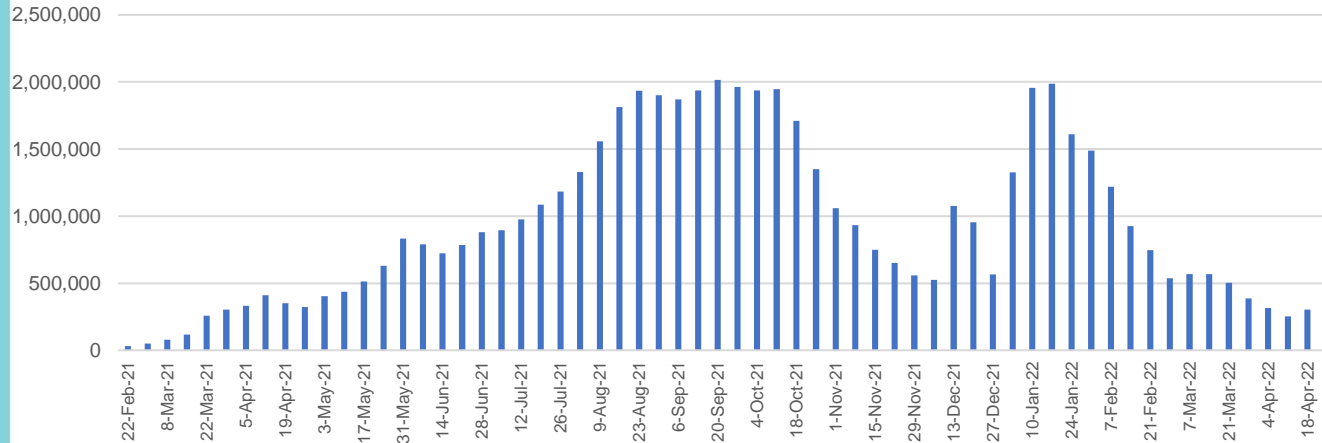
NT	Jurisdictions	Commonwealth
Cumulative	341,144	237,572
Daily increase	290	377

# Vaccine milestone charts

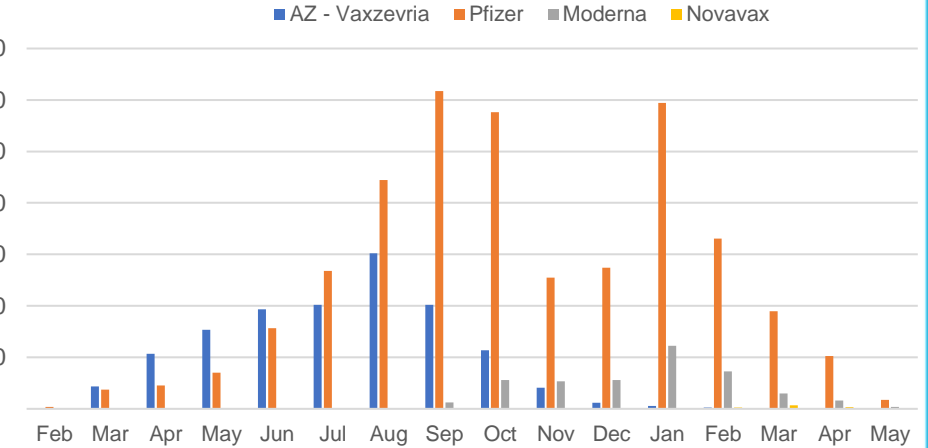
Data as at:  
05 May 2022

Australia's COVID-19  
Vaccine Roadmap

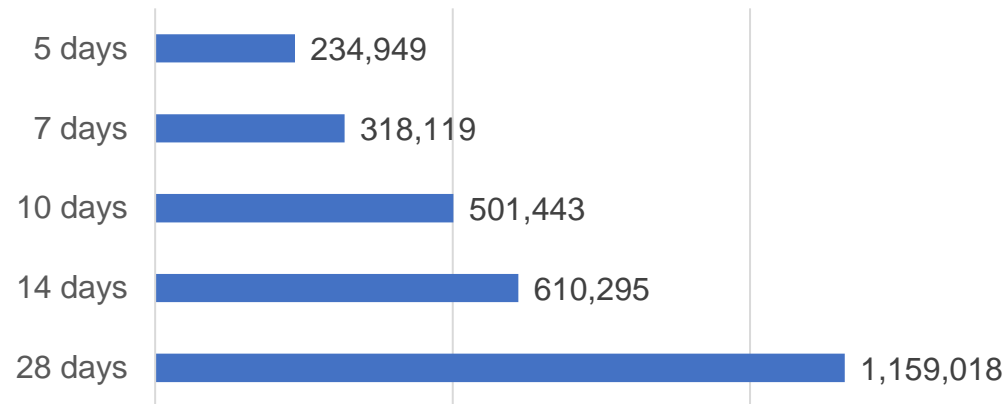
### Doses Administered by Week



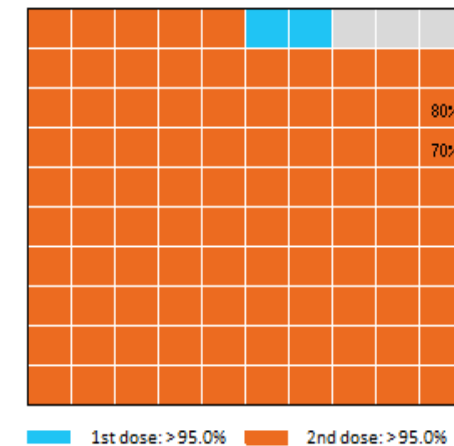
### Doses by administration month and vaccine type



### Doses Reported



### Eligible population percentage coverage



\*Each square represents 1% of the national population.  
Squares are filled as milestones are achieved.

\*Sourced from the Australian Immunisation Register.

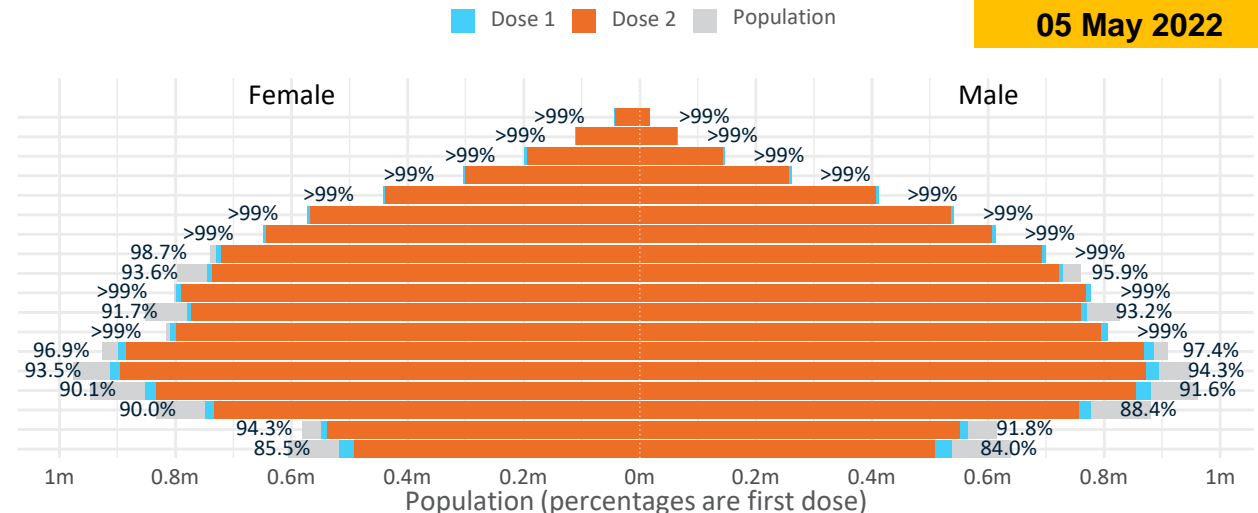
Data as at:  
05 May 2022

# Doses by age and sex

First and second doses by age and sex

	16+	50+	12-15	5-11
Dose 1	97.13% (20,028,764 doses / 20,619,959 people)	>99% (8,867,611 doses / 8,749,703 people)	84.79% (1,054,771 doses / 1,243,990 people)	52.82% (1,202,568 doses / 2,276,638 people)
Dose 2	95.52% (19,696,439 doses / 20,619,959 people)	>99% (8,761,296 doses / 8,749,703 people)	80.40% (1,000,126 doses / 1,243,990 people)	37.30% (849,225 doses / 2,276,638 people)

Age	Dose 1	Dose 2
95+	62,428 (>99%)	59,033 (>99%)
90-94	177,833 (>99%)	172,217 (>99%)
85-89	344,926 (>99%)	337,952 (>99%)
80-84	565,066 (>99%)	557,797 (>99%)
75-79	853,874 (>99%)	845,511 (>99%)
70-74	1,114,939 (>99%)	1,103,933 (>99%)
65-69	1,264,237 (>99%)	1,250,046 (>99%)
60-64	1,431,324 (>99%)	1,415,209 (98.5%)
55-59	1,475,652 (94.9%)	1,459,196 (93.8%)
50-54	1,577,332 (>99%)	1,560,402 (>99%)
45-49	1,551,715 (92.5%)	1,533,195 (91.4%)
40-44	1,617,939 (>99%)	1,593,893 (98.4%)
35-39	1,787,879 (97.4%)	1,756,000 (95.7%)
30-34	1,814,782 (94.3%)	1,773,395 (92.2%)
25-29	1,742,438 (91.4%)	1,695,275 (88.9%)
20-24	1,532,983 (89.5%)	1,493,831 (87.2%)
16-19	1,113,417 (93.1%)	1,089,554 (91.1%)
12-15	1,054,771 (84.8%)	1,000,126 (80.4%)



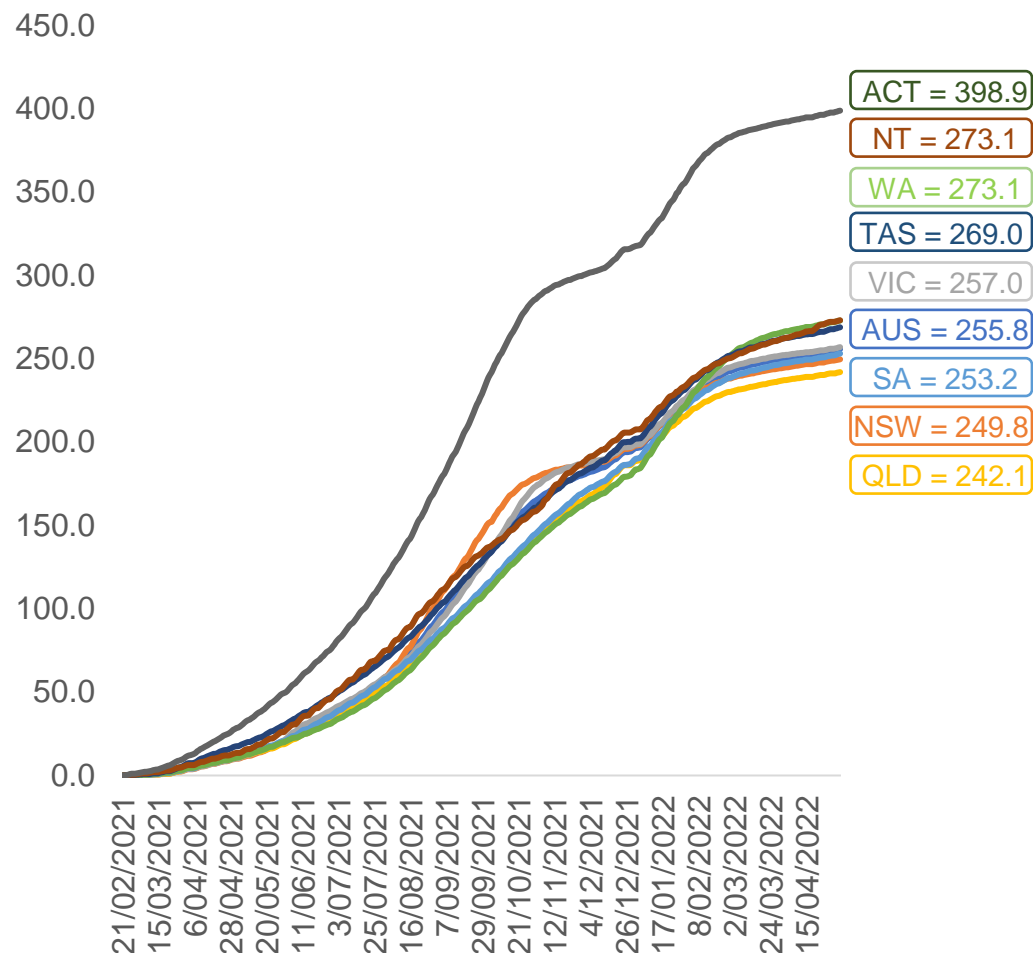
	AUS	ACT	NSW	NT	QLD	SA	TAS	VIC	WA
16 and over - dose 1	20,028,764	352,200	6,319,095	173,756	3,854,008	1,373,087	444,454	5,153,674	2,091,846
16 and over - dose 2	19,696,439	346,677	6,223,590	169,015	3,790,084	1,343,662	435,343	5,077,308	2,060,466
16 and over - population	20,619,959*	344,037	6,565,651	190,571	4,112,707	1,440,400	440,172	5,407,574	2,114,978
16 and over % with dose 1	97.13%	>99%	96.24%	91.18%	93.71%	95.33%	>99%	95.30%	98.91%
16 and over % with dose 2	95.52%	>99%	94.79%	88.69%	92.16%	93.28%	98.90%	93.89%	97.42%
5 to 11 - dose 1	1,202,568	31,970	358,584	13,252	209,049	84,355	28,780	327,035	141,607
5 to 11 - dose 2	849,225	26,296	256,790	8,039	143,237	60,288	22,629	232,546	95,014
5 to 11 - population	2,276,638	39,789	716,460	24,750	478,731	148,816	45,033	578,499	244,154
5 to 11 % with dose 1	52.82%	80.35%	50.05%	53.54%	43.67%	56.68%	63.91%	56.53%	58.00%
5 to 11 % with dose 2	37.30%	66.09%	35.84%	32.48%	29.92%	40.51%	50.25%	40.20%	38.92%
12 to 15 - dose 1	1,054,771	20,090	324,449	10,842	206,890	68,447	22,942	275,510	115,916
12 to 15 - dose 2	1,000,126	19,557	310,295	9,783	193,916	64,877	21,861	263,959	107,431
12 to 15 - population	1,243,990	19,693	390,330	13,060	270,146	82,747	26,308	308,611	132,869
12 to 15 % with dose 1	84.79%	>99%	83.12%	83.02%	76.58%	82.72%	87.21%	89.27%	87.24%
12 to 15 % with dose 2	80.40%	>99%	79.50%	74.91%	71.78%	78.40%	83.10%	85.53%	80.85%

\*National population will not equal sum of listed jurisdictions due to a small number of people counted in national population residing in some 'other' territories. Sum of state doses will not add to national total as some records are unable to be geocoded to a State or Territory.  
Doses sourced from Australian Immunisation Register, population from ABS ERP June 2020



# Vaccinations by location

Cumulative total doses administered vs eligible state populations\*

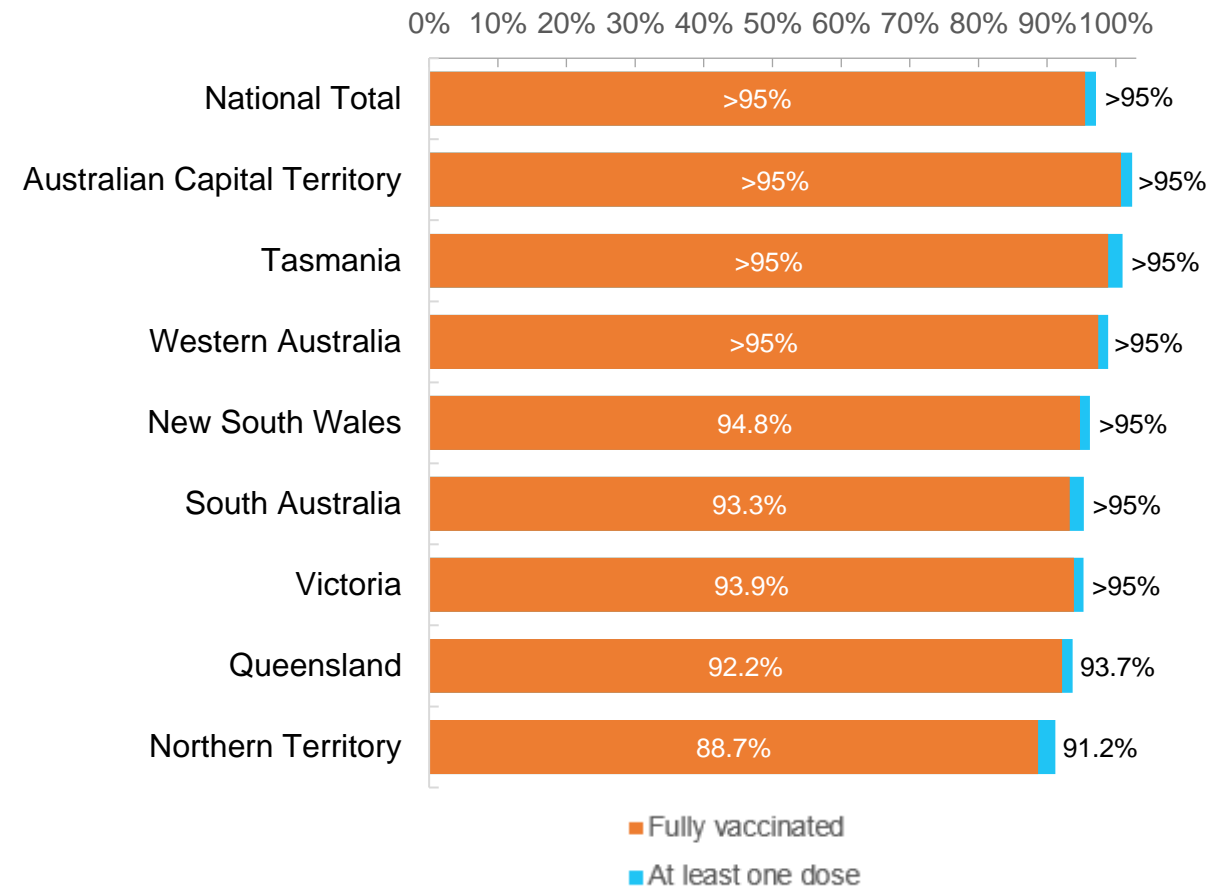


\*Not an indication of percentage vaccinated, numbers will exceed 100 due to multiple doses required per person of the population. All doses are included for those aged 12 and above, and are based on vaccination provider location.

Data as at:  
05 May 2022

Australia's COVID-19  
Vaccine Roadmap

First and Second Doses by residential location



# Aboriginal and Torres Strait Islander peoples

## Number of people vaccinated

Data as at:  
03 May 2022  
Updated weekly

Australia's COVID-19  
Vaccine Roadmap



**439,739**

people over the age of 16  
have had at least one dose

**84.5%**

of people over the age of 16  
have had at least one dose



**420,457**

people over the age of 16  
are fully vaccinated

**80.8%**

of people over the age of 16 are  
fully vaccinated



People aged 12 – 15 years

**48,551**

**42,734**

**68.3%**

At least one dose

**60.1%**

Fully vaccinated

### 178 Aboriginal community controlled health services (ACCHS)

0#

50

27

44

12

3

21

21

**ACT**

**NSW**

**NT**

**QLD**

**SA**

**TAS**

**VIC**

**WA**

Medicare Address State <sup>##</sup>	Individuals Dose 1	Individuals Dose 1 %	Individuals Dose 2	Individuals Dose 2 %
Australian Capital Territory	4,791	90.9%	4,672	88.7%
New South Wales	135,024	86.7%	131,916	84.8%
Northern Territory	41,579	89.5%	39,405	84.8%
Queensland	115,558	81.4%	110,018	77.5%
South Australia	19,896	80.0%	18,461	74.3%
Tasmania	13,892	88.6%	13,485	86.0%
Victoria	35,452	89.8%	34,662	87.8%
Western Australia	53,624	86.3%	49,606	79.8%
Unknown/Other Territories	19,923	68.8%	18,232	62.9%
<b>Totals</b>	<b>439,739</b>	<b>84.5%</b>	<b>420,457</b>	<b>80.8%</b>

Source: Australian Immunisation Register

\*Identifying as Aboriginal and Torres Strait Islander is optional and the estimated population may be under reported.

\*\*Includes all Aboriginal and Torres Strait Islander peoples who have received a vaccination, not limited to those administered in an ACCHS setting

#ACCHS in the ACT are currently operating as a Commonwealth Vaccine Clinics so not included to avoid double counting

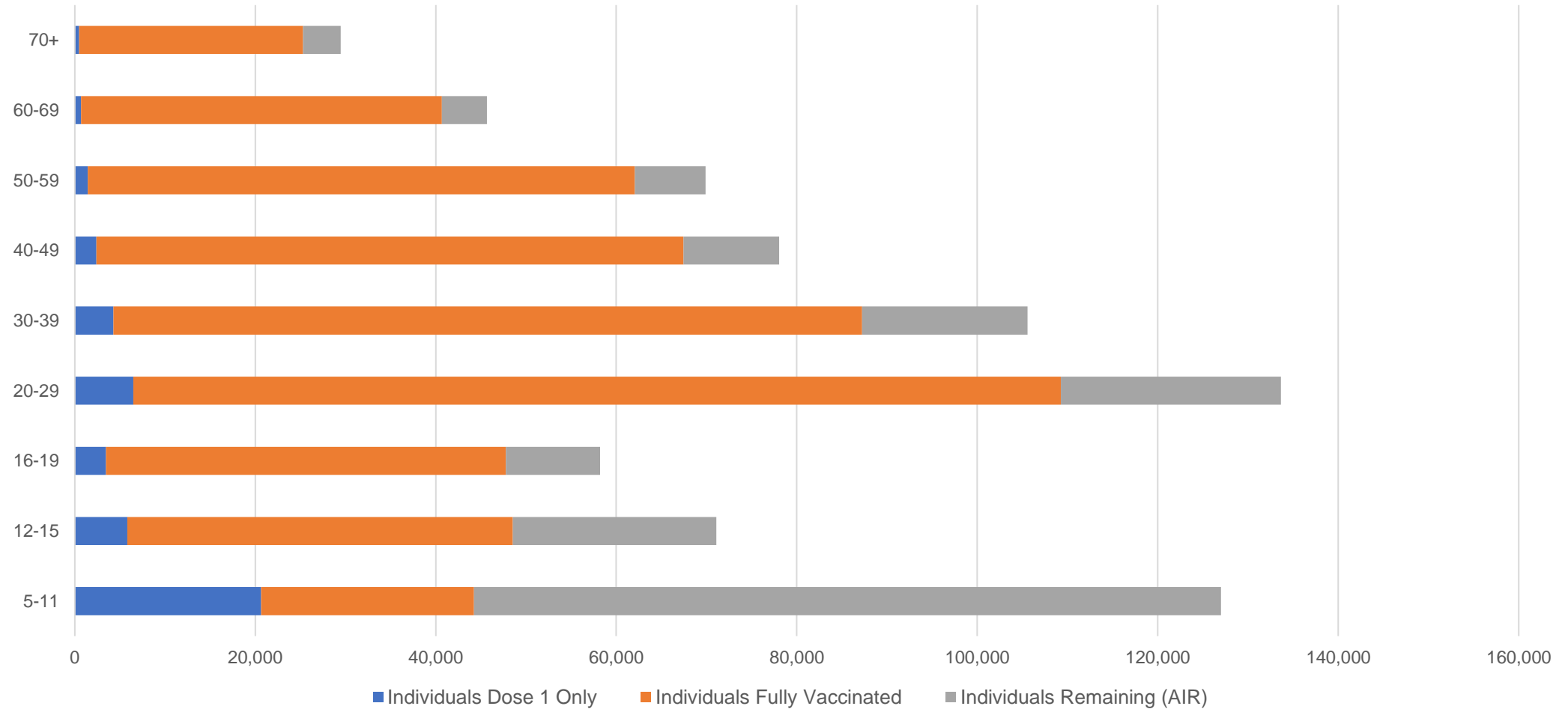
##The above table includes all identified Aboriginal and Torres Strait Islander people who are aged 16 and above by their state of residence.

# Aboriginal and Torres Strait Islander peoples

## Number of people vaccinated by age

Data as at:  
03 May 2022  
Updated weekly

Australia's COVID-19  
Vaccine Roadmap



Source: Australian Immunisation Register

# Commonwealth primary care

Data as at:  
05 May 2022

Australia's COVID-19  
Vaccine Roadmap



## Primary care vaccine administration sites

<b>5,803</b>	<b>128</b>	<b>178</b>	<b>3,599</b>
GPs	CVCs	ACCHS	Pharmacies



**35,652,560** total vaccine doses administered  
primary care settings as at 05 May  
**+ 55,301** recorded in the last 24 hours

## Primary care vaccinations by provider type

	Doses administered	Daily increase	7 day increase
General Practice* includes other Commonwealth	28,666,577	38,914	188,163
Pharmacy	6,985,983	16,387	81,188

**NSW**  
**12,326,247**  
(+17,545 daily increase)

**VIC**  
**8,863,745**  
(+12,407 daily increase)

**QLD**  
**6,850,151**  
(+11,801 daily increase)

**WA**  
**3,744,682**  
(+5,931 daily increase)

**TAS**  
**666,058**  
(+1,420 daily increase)

**SA**  
**2,116,110**  
(+4,012 daily increase)

**ACT**  
**561,981**  
(+871 daily increase)

**NT**  
**213,710**  
(+226 daily increase)

**309,876**

doses administered to persons  
residing in other territories or with  
missing residential information

\*General practice includes Commonwealth Vaccination Clinics, Aboriginal Community Health Centres, Royal Flying Doctor Service and other Commonwealth vaccination facilities

Source: Australian Immunisation Register

Data as at:  
05 May 2022

# Commonwealth aged care and disability doses administered



**1,278,095** (+ 856 last 24 hours)

Total vaccine doses administered in aged care and disability facilities as at 05 May

Number of doses administered as part of the Commonwealth aged and disability care rollout

**NSW**  
**560,193**  
(+131 daily increase)

**VIC**  
**237,107**  
(+273 daily increase)

**QLD**  
**203,321**  
(+73 daily increase)

**WA**  
**108,521**  
(+33 daily increase)

**TAS**  
**23,186**  
(+52 daily increase)

**SA**  
**84,269**  
(+103 daily increase)

**ACT**  
**17,241**  
(+61 daily increase)

**NT**  
**7,535**  
(<10 daily increase)

**36,722**

doses administered to persons  
residing in other territories or with  
missing residential information

\*Sourced from the Australian Immunisation Register. Includes all persons vaccinated at participating residential aged care, disability and related industry settings.

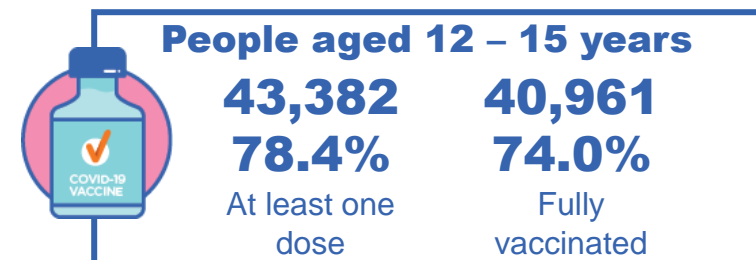
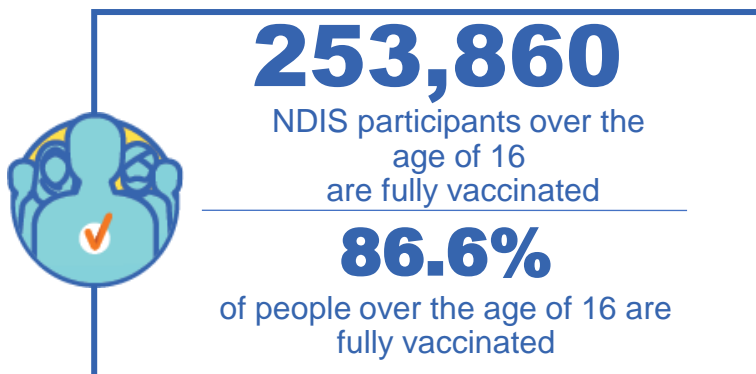
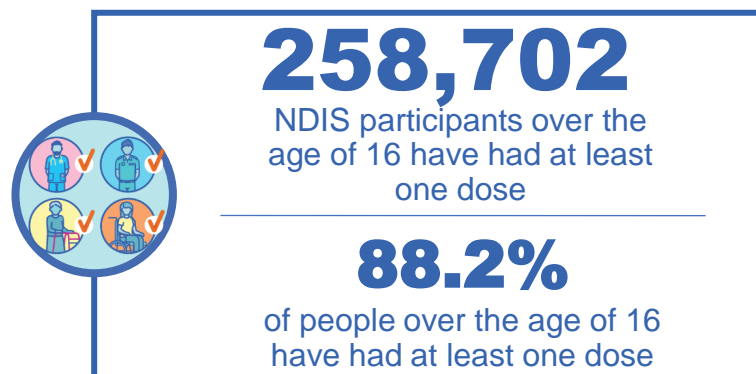
\*\*State level breakdown indicates the residential location and may not align to the state in which the vaccination occurred.

Source: Australian Immunisation Register

# National Disability Insurance Scheme (NDIS) reported vaccinations

Data as at:  
05 May 2022  
Updated weekly

Australia's COVID-19  
Vaccine Roadmap



## NDIS participant vaccinations

	People aged 16+ with at least one dose	People aged 16+ fully vaccinated	% People aged 16+ with at least one dose	% People aged 16+ fully vaccinated
ACT	4,887	4,821	90.1%	88.9%
NSW	79,401	78,110	88.5%	87.1%
NT	2,237	2,164	78.4%	75.8%
QLD	51,060	50,087	86.8%	85.1%
SA	21,131	20,611	86.1%	84.0%
TAS	6,475	6,321	88.1%	86.0%
VIC	68,808	67,594	89.4%	87.8%
WA	24,703	24,152	89.7%	87.7%
National	258,702	253,860	88.2%	86.6%

Source: Linkage between National Disability Insurance Agency data and the Australian Immunisation Register. Total NDIS participant numbers as at 28 February. Australian Immunisation Register data as at 4 May. Includes all participants regardless of residence type.

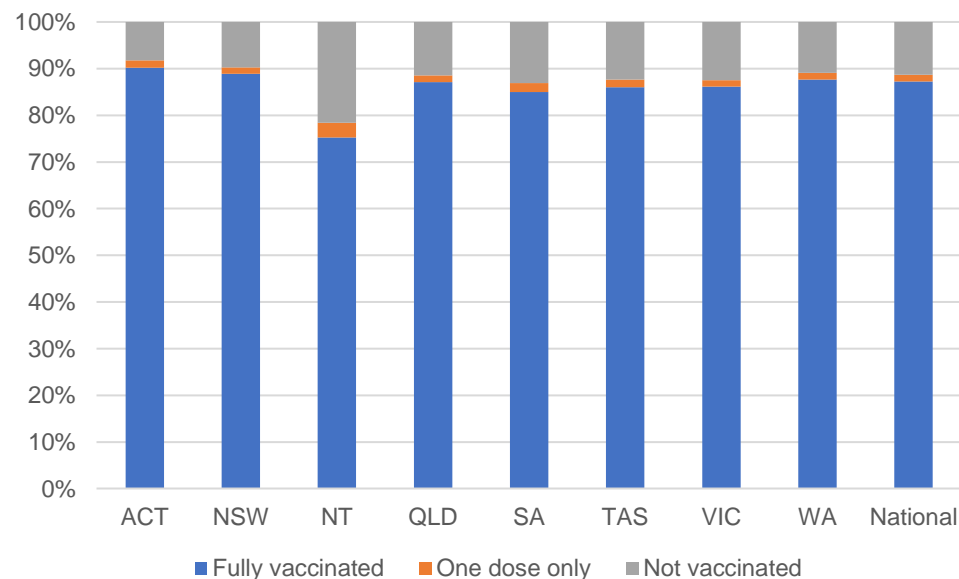
# National Disability Insurance Scheme (NDIS) reported vaccinations

Data as at:  
05 May 2022  
Updated Weekly

Australia's COVID-19  
Vaccine Roadmap

NATIONAL	Total people with at least one dose	People fully vaccinated	Total number of individuals in cohort	% People with at least one dose	% People fully vaccinated
NDIS participants living in disability accommodation	20,790	20,450	23,352	89.0%	87.6%

## NDIS participants in disability and aged care accommodation



Source: Linkage between National Disability Insurance Agency data and the Australian Immunisation Register. Includes participants residing in disability accommodation only.

Source: Total NDIS participant numbers as at 28 February. Participant data as at 4 May. Australian Immunisation Register data as at 4 May. Worker data as at 4 May.

## NDIS workforce vaccinations

	NDIS workers with at least one dose	NDIS workers fully vaccinated	% NDIS workers with at least one dose	% NDIS workers fully vaccinated
NSW	121,713	117,437	98.2%	94.8%
VIC	116,092	112,390	98.3%	95.2%
QLD	69,687	68,782	97.5%	96.3%
WA	32,669	31,051	97.8%	93.0%
SA	35,437	33,033	98.5%	91.8%
TAS	10,733	10,504	99.5%	97.4%
ACT	3,511	3,469	99.0%	97.8%
NT	3,442	3,293	99.4%	95.1%
<b>TOTAL</b>	<b>393,284</b>	<b>379,959</b>	<b>98.2%</b>	<b>94.8%</b>

Source: the NDIS Commission has established a requirement for registered NDIS providers who provide intensive disability support services to report on the vaccination status of workers they employ, or otherwise engage, to deliver NDIS-funded supports and services, and who are required to be vaccinated in accordance with in-force state and territory public health orders. The statistics reflect data reported to the NDIS Commission by registered NDIS providers and should be considered indicative and subject to change

Note: Some registered NDIS providers are yet to report on the vaccination status of their workforce. The NDIS Commission is working with those providers around reporting requirements.

Remaining workers not included include those exempt from vaccination requirements, workers whose vaccination status is not yet verified by the provider (such as workers on leave) and provider reporting anomalies.



# Residential aged care vaccination rollout

Residential aged care facilities status

**175,621**

People fully vaccinated

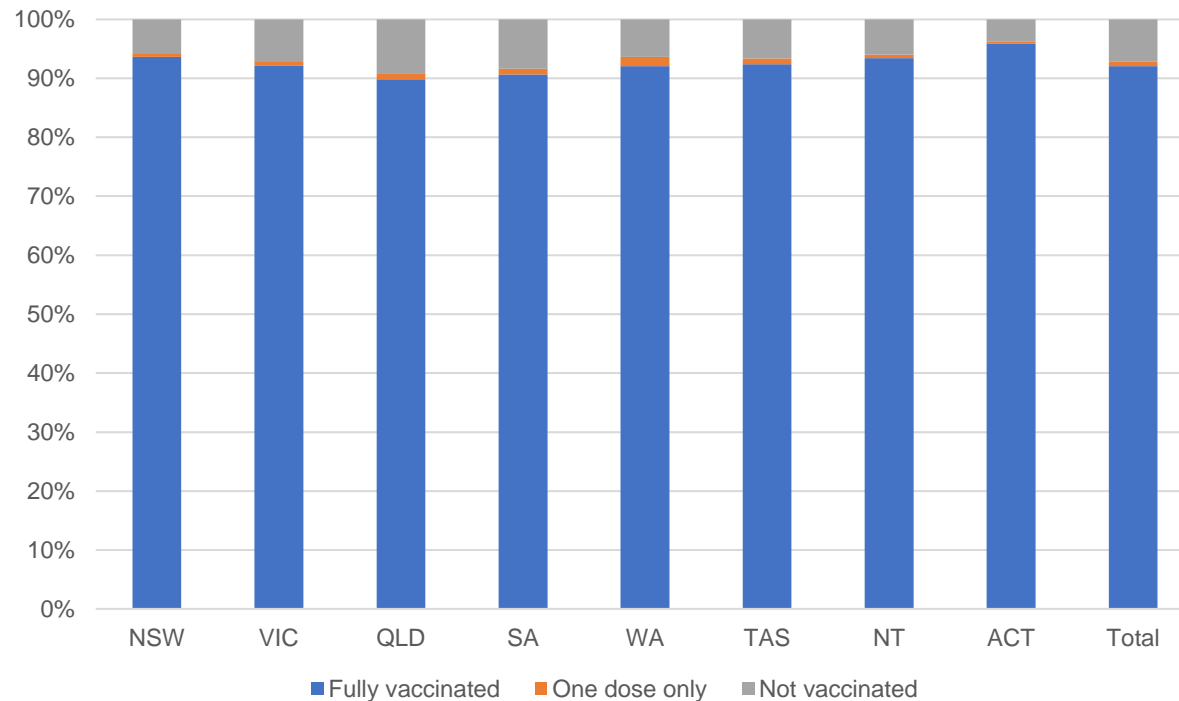
**177,159**

People with at least one dose

Australia's COVID-19 Vaccine Roadmap

Data as at:  
05 May 2022  
Updated weekly

## Aged care resident vaccinations



## Aged care worker vaccinations

Jurisdictions	Total workers with at least one dose	Workers fully vaccinated	% Workers with at least one dose	% Workers fully vaccinated
NSW	77,184	77,177	99.2%	99.2%
VIC	67,521	67,519	97.5%	97.5%
QLD	46,922	46,919	98.1%	98.1%
SA	26,672	26,656	98.1%	98.1%
WA	24,253	24,251	100.0%	100.0%
TAS	7,459	7,459	100.0%	100.0%
NT	895	895	100.0%	100.0%
ACT	2,860	2,860	96.7%	96.7%
Total	253,766	253,736	98.5%	98.5%

Source: My Aged Care Portal vaccination progress

\*Status updates are provided by facilities at least once per week. Reporting is updated Monday to Friday to encompass different facility updates being made on different days.

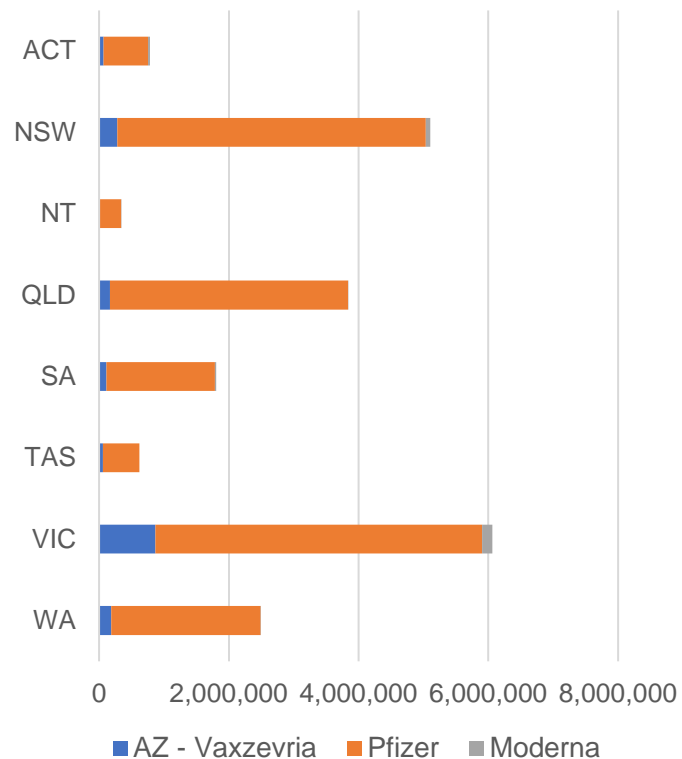
Data is sourced directly from Aged Care Service Providers and is not drawn or closely aligned with data from AIR due to inconsistencies and potential lags in uploading of records.



Data as at:  
05 May 2022

## Jurisdiction administered

Total vaccine doses administered in State and Territory clinics as at 05 May



**21,055,302** total vaccine doses administered  
in State and Territory clinics as at 05 May  
+ **8,412** recorded in the last 24 hours  
+ **44,991** recorded in the last 7 days

**NSW**  
**5,105,139**  
(+1,020 daily  
increase)

**VIC**  
**6,065,961**  
(+1,685 daily  
increase)

**QLD**  
**3,839,992**  
(+735 daily  
increase)

**WA**  
**2,496,033**  
(+2,338 daily  
increase)

**TAS**  
**620,587**  
(+163 daily  
increase)

**SA**  
**1,805,710**  
(+1,304 daily  
increase)

**ACT**  
**780,736**  
(+877 daily  
increase)

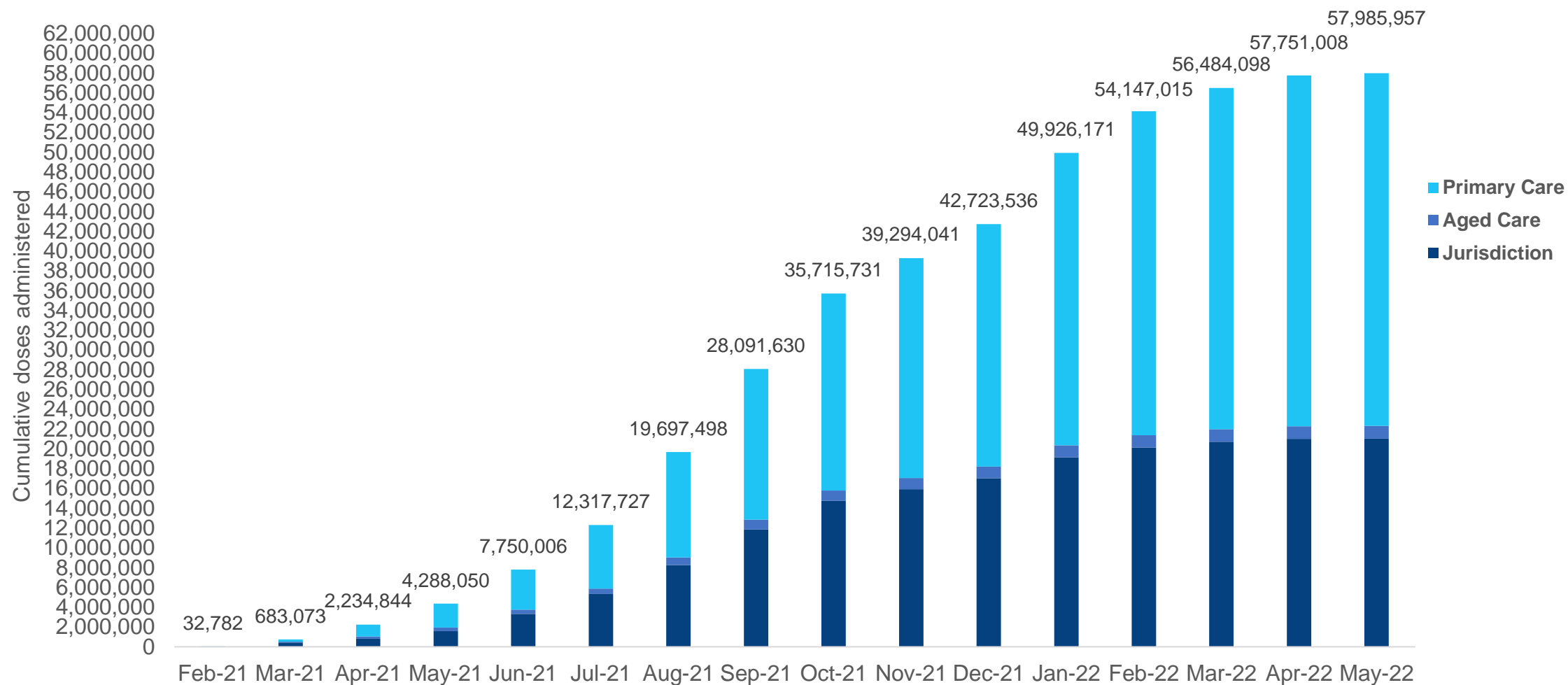
**NT**  
**341,144**  
(+290 daily  
increase)

\*Sourced from the Australian Immunisation Register. Numbers are calculated as difference in daily cumulative reported numbers to allow for historical corrections.

Source: Australian Immunisation Register

# Cumulative doses administered by channel

Data as at:  
05 May 2022



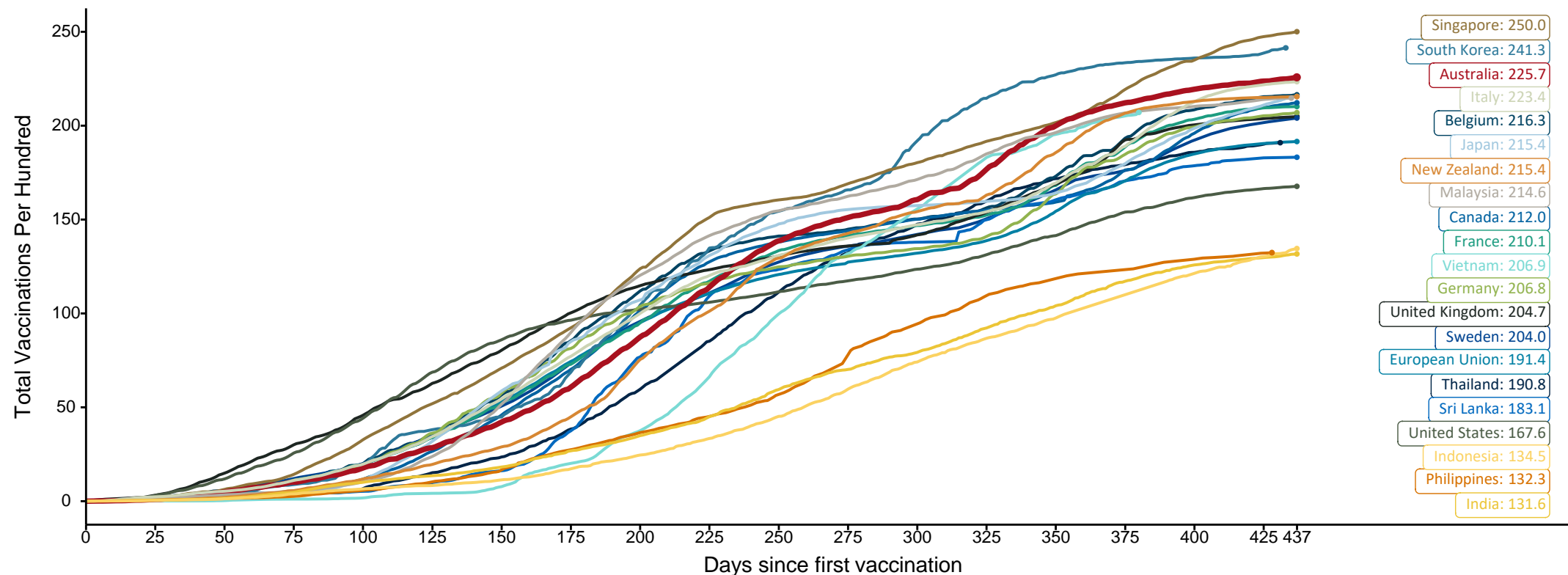
Source: Australian Immunisation Register

# Doses at equivalent stages of rollout (Day 437)

Data as at:  
05 May 2022

The x-axis is truncated at the length of Australia's vaccination program. Countries with intermittent reporting have had their doses per 100 imputed to Australia's current stage of rollout. Israel excluded as it is beyond scale of the graph

Cumulative doses administered (05 May): **57,985,957**

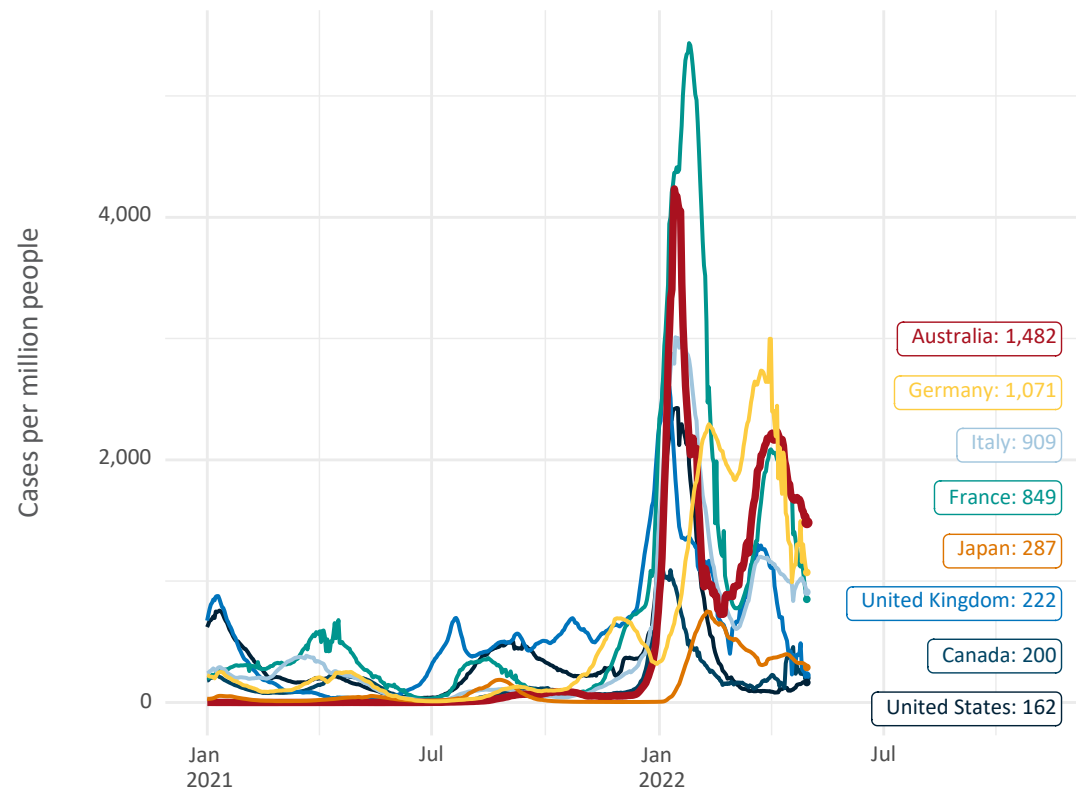


Note: From 11 January 2022, data for Australia includes all doses administered to people 5 and over. Prior to 11 January, data was for 12 and over.  
Source: Department of Health (Australia), Our World in Data (international)  
Latest data: 05 May

# Recent International data – COVID-19

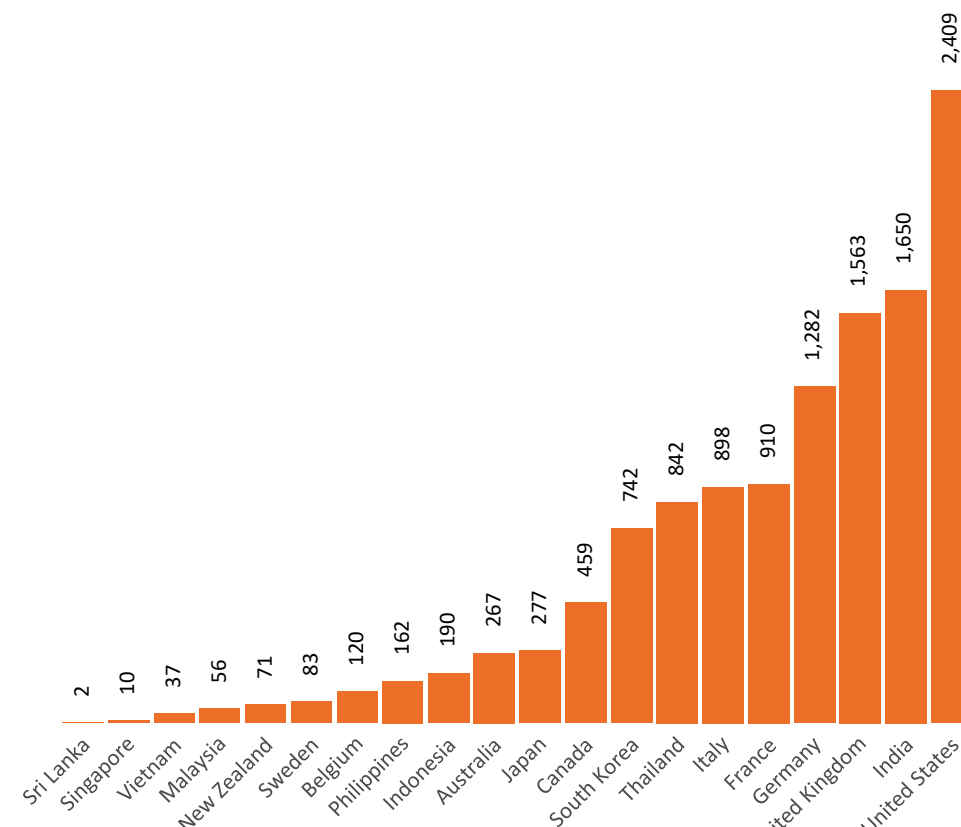
Data as at:  
01 May 2022

New daily cases per million since 2021, Australia and G7 countries  
Smoothed - 7 day average



Source: OWID  
Data downloaded: 02 May 2022 09:33  
Latest data: 30 Apr 2022

COVID-19 deaths in past 7 days - Australia and select countries

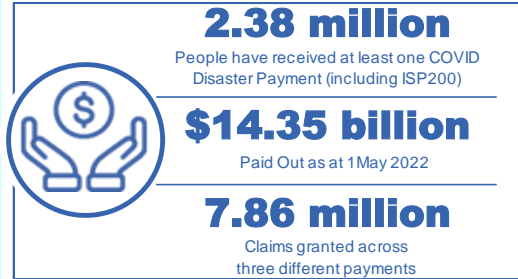


Source: OWID  
Data downloaded: 02 May 2022 09:33  
Latest data: 30 Apr 2022

# Pandemic Response Payments

Australia's COVID-19  
Vaccine Roadmap

Data as at midnight: 1 May 2022  
Updated weekly



<b>COVID Disaster Payment:</b>	5.89 million claims received - 2.19 million individuals paid a total of \$12.59 billion.
<b>\$200 Income Support Payment:</b>	353,000 claims received - 183,000 individuals paid a total of \$268.9 million.
<b>Pandemic Leave Disaster Payment:</b>	2.12 million claims received - 1.29 million individuals paid a total of \$1.49 billion.



## COVID Disaster Payment

assisting during a lockdown event in a Commonwealth hotspot.

## Income Support Payment \$200

for income support recipients who lost at least 8 hours of work.

## Pandemic Leave Disaster Payment

for those who have to self-isolate, quarantine or care.

For more information visit:  
[servicesaustralia.gov.au](https://servicesaustralia.gov.au)

## COVID-19 DISASTER PAYMENTS

### Northern Territory

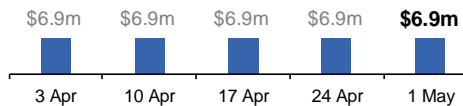
Lockdown (#3) from 16 Nov to 22 Nov  
Claiming period ended 27 Dec

**7,500 people have received at least one COVID Disaster Payment.**

**\$6.9m paid out as at 1 May 2022.**

**Nil paid in initial payments in the week ending 1 May 2022.**

Cumulative payments made by Territory since activation on 25 Aug 2021.



### Victoria

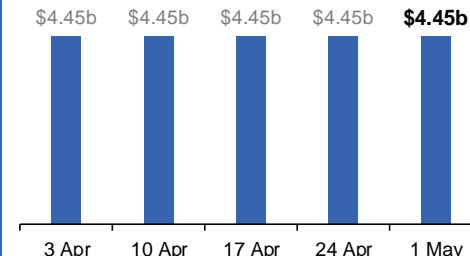
Lockdown (#6) from 6 Aug to 28 Oct  
Claiming period ended 9 Dec

**745,000 people have received at least one COVID Disaster Payment.**

**\$4.45b paid out as at 1 May 2022.**

**Nil paid in initial and reoccurring payments in the week ending 1 May 2022.**

Cumulative payments made by State since activation on 8 Jun 2021.



### New South Wales

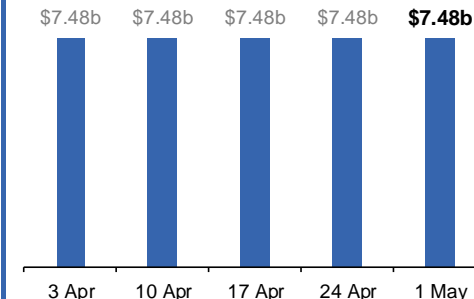
Lockdown from 24 Jun to 10 Oct  
Claiming period ended 27 Nov

**1.08m people have received at least one COVID Disaster Payment.**

**\$7.48b paid out as at 1 May 2022.**

**Nil paid in initial and reoccurring payments in the week ending 1 May 2022.**

Cumulative payments made by State since activation on 1 Jul 2021.



### Australian Capital Territory

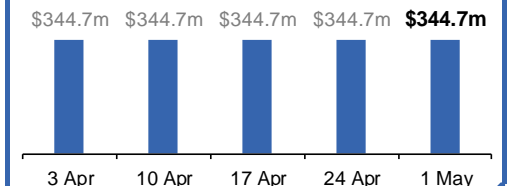
Lockdown from 12 Aug to 14 Oct  
Claiming period ended 25 Nov

**65,000 people have received at least one COVID Disaster Payment.**

**\$344.7m paid out as at 1 May 2022.**

**Nil paid in initial and reoccurring payments in the week ending 1 May 2022.**

Cumulative payments made by Territory since activation on 20 Aug 2021.



# Pandemic Response Payments (continued)

Data as at midnight: 1 May 2022  
Updated weekly

## COVID-19 DISASTER PAYMENTS

### Tasmania

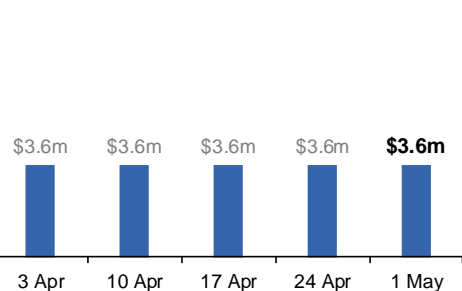
Lockdown from 15 Oct to 18 Oct  
Claiming period ended 12 Nov

**6,900 people have received at least one COVID Disaster Payment.**

**\$3.6m paid out as at 1 May 2022.**

**Nil paid in initial and reoccurring payments in the week ending 1 May 2022.**

Cumulative payments made by State since activation on 22 Oct 2021.



### Queensland

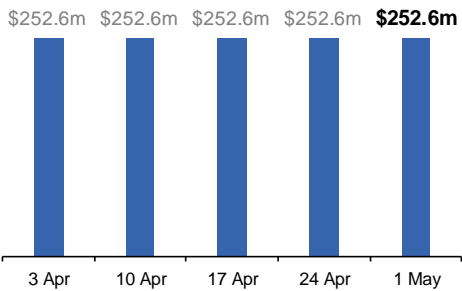
Lockdown from 31 Jul to 11 Aug  
Claiming period ended 28 Aug

**196,000 people have received at least one COVID Disaster Payment.**

**\$252.6m paid out as at 1 May 2022.**

**Nil paid in initial and reoccurring payments in the week ending 1 May 2022.**

Cumulative payments made by State since activation on 7 Aug 2021.



### South Australia

Lockdown from 21 to 27 Jul  
Claiming period ended 17 Aug

**86,000 people have received at least one COVID Disaster Payment.**

**\$48.2m paid out as at 1 May 2022.**

**Nil paid in initial and reoccurring payments in the week ending 1 May 2022.**

Cumulative payments made by State since activation on 28 Jul 2021.

