



Australian Government
Operation COVID Shield

COVID-19 Vaccine Roll-out

04 May 2022

Data as at:
03 May 2022

Total vaccine doses



57,860,092 total vaccine doses administered nationally as at 03 May

+56,737 recorded in the last 24 hours



20,025,111

people have had at least one dose

>95%

of people over the age of 16 have had at least one dose



19,692,444

people are fully vaccinated

>95%

of people over the age of 16 are fully vaccinated



13,452,111

people over the age of 16 who have received more than two doses

NSW
17,952,240
(+17,497 daily increase)

VIC
15,218,906
(+13,373 daily increase)

QLD
10,944,345
(+11,426 daily increase)

WA
6,361,951
(+6,496 daily increase)

TAS
1,304,699
(+1,450 daily increase)

SA
3,990,905
(+4,085 daily increase)

ACT
1,509,587
(+1,725 daily increase)

NT
577,459
(+685 daily increase)

*Administration state breakdown indicates state in which a vaccine was administered

**Overall dose count includes instances of more than three doses per person in a small number of cases.

Source: Australian Immunisation Register

Booster Vaccinations

Data as at:
03 May 2022



209,855

Indigenous people who have received three or more doses

52.9%

of eligible population (396,903)



164,826

Aged Care Residents who have received three or more doses^{##}

96.4%

of eligible population (171,028)



183,485

NDIS participants

21,215

NDIS residents

who have received three or more doses[#]

74.0%

of eligible population (247,000)

88.2%

of eligible population (24,000)



13,452,111

total people who have received three or more doses

+13,559 daily increase

69.3% of eligible population (19,410,237)

	Number of People	Daily Increase	% of Eligible
NSW	4,110,139	3,874	66.4%
VIC	3,601,877	2,805	71.4%
QLD	2,327,542	2,461	62.6%
WA	1,646,502	2,475	84.0%
SA	952,914	930	72.5%
TAS	307,255	373	72.0%
ACT	266,749	221	77.3%
NT	125,552	379	75.8%

*People may belong to multiple groups and could be represented in the above breakdowns multiple times.

NDIS participants data as at 02 May 2022.

Aged Care Residents data as at 03 May 2022.

Source: Australian Immunisation Register

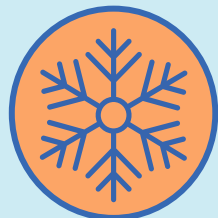
113,581

doses administered to persons residing in other territories or with missing residential information

Winter / Fourth Doses

Data as at:
01 May 2022
Updated weekly

Australia's COVID-19
Vaccine Roadmap



500,924 total people (16+) who have received four or more doses

+155,095 weekly increase

	Number of People 16+	Weekly Increase
ACT	13,392	3,455
NSW	170,986	49,550
NT	2,973	656
QLD	96,536	31,058
SA	35,285	11,715
TAS	14,020	4,807
VIC	125,651	39,760
WA	39,626	13,349

2,455 doses administered to persons
residing in other territories or with
missing residential information

Source: Australian Immunisation Register

Data as at:
03 May 2022

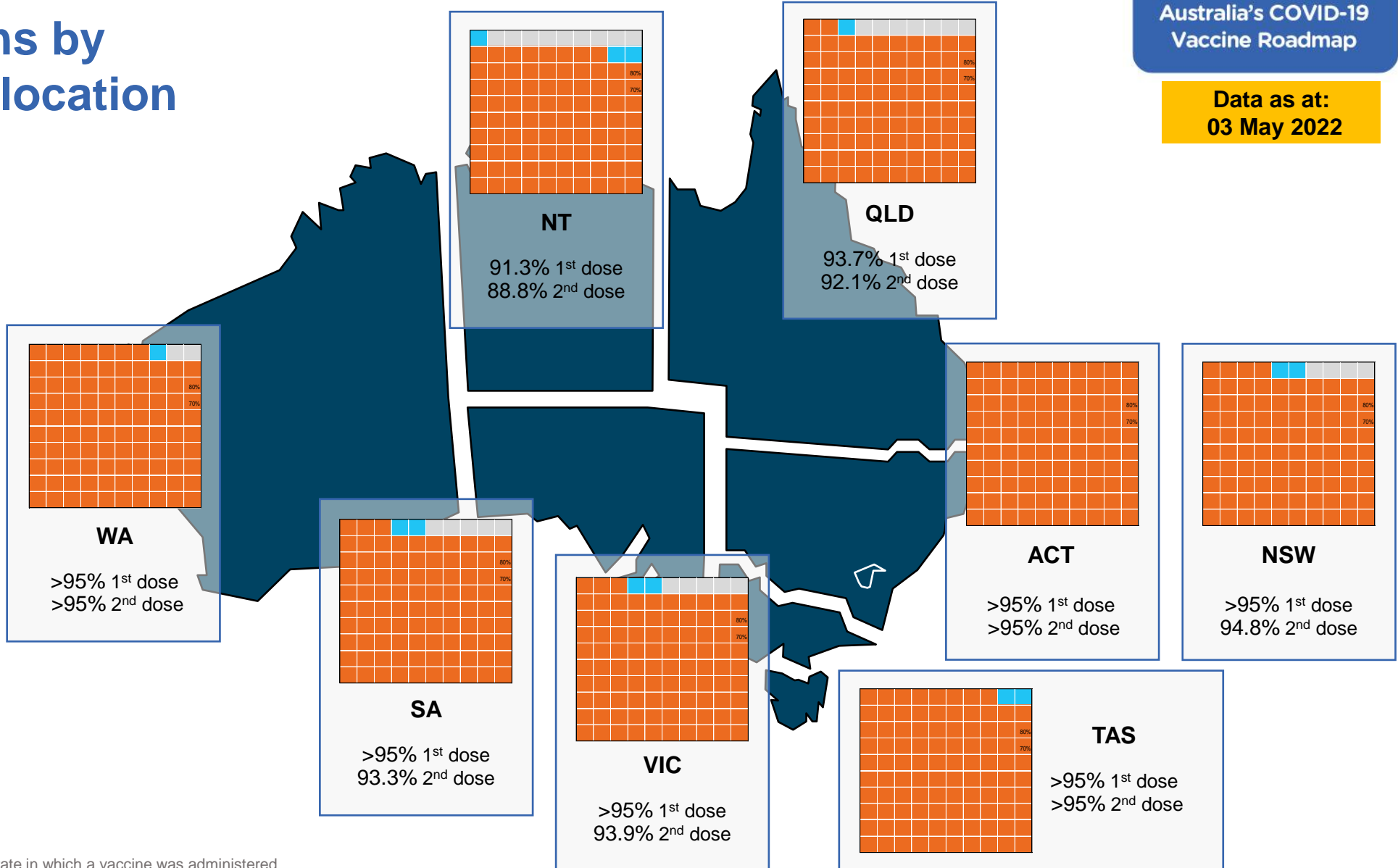
Vaccinations by residential location

First doses

Age	Today	4 weeks ago	8 weeks ago
16+	>95%	>95%	>95%
50+	>95%	>95%	>95%
70+	>95%	>95%	>95%

Fully vaccinated

Age	Today	4 weeks ago	8 weeks ago
16+	>95%	>95%	95.0%
50+	>95%	>95%	>95%
70+	>95%	>95%	>95%



*Residential state may differ from the state in which a vaccine was administered

Commonwealth and Jurisdiction vaccine doses administered

Data as at:
03 May 2022



57,860,092 total vaccine doses administered nationally as at 03 May

+ 56,737 recorded in the last 24 hours



21,040,924

doses administered by state and territory facilities

+ 6,127

recorded in the last 24 hours

NSW	Jurisdictions	Commonwealth
Cumulative	5,103,079	12,849,161
Daily increase	889	16,608

TAS	Jurisdictions	Commonwealth
Cumulative	620,232	684,467
Daily increase	216	1,234

VIC	Jurisdictions	Commonwealth
Cumulative	6,062,455	9,156,451
Daily increase	1,586	11,787

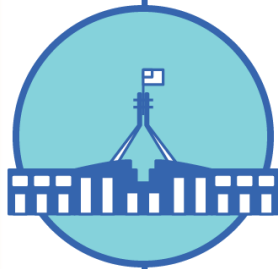
SA	Jurisdictions	Commonwealth
Cumulative	1,803,213	2,187,692
Daily increase	632	3,453

QLD	Jurisdictions	Commonwealth
Cumulative	3,838,584	7,105,761
Daily increase	602	10,824

ACT	Jurisdictions	Commonwealth
Cumulative	779,045	730,542
Daily increase	787	938

WA	Jurisdictions	Commonwealth
Cumulative	2,493,678	3,868,273
Daily increase	1,087	5,409

NT	Jurisdictions	Commonwealth
Cumulative	340,638	236,821
Daily increase	328	357



36,819,168

doses administered by commonwealth facilities

+ 50,610

recorded in the last 24 hours

35,542,699 total vaccine doses administered in primary care settings

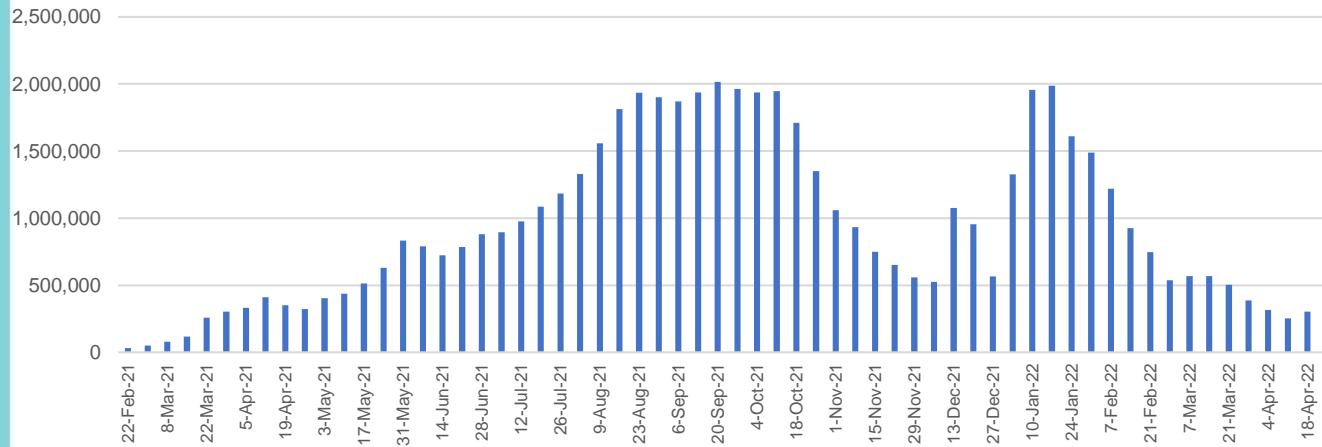
1,276,469 total vaccine doses administered in aged care and disability settings

Vaccine milestone charts

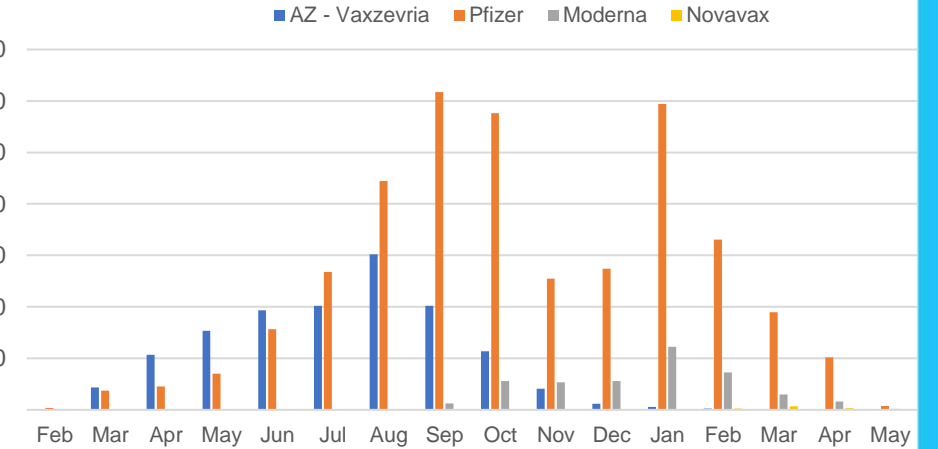
Data as at:
03 May 2022

Australia's COVID-19
Vaccine Roadmap

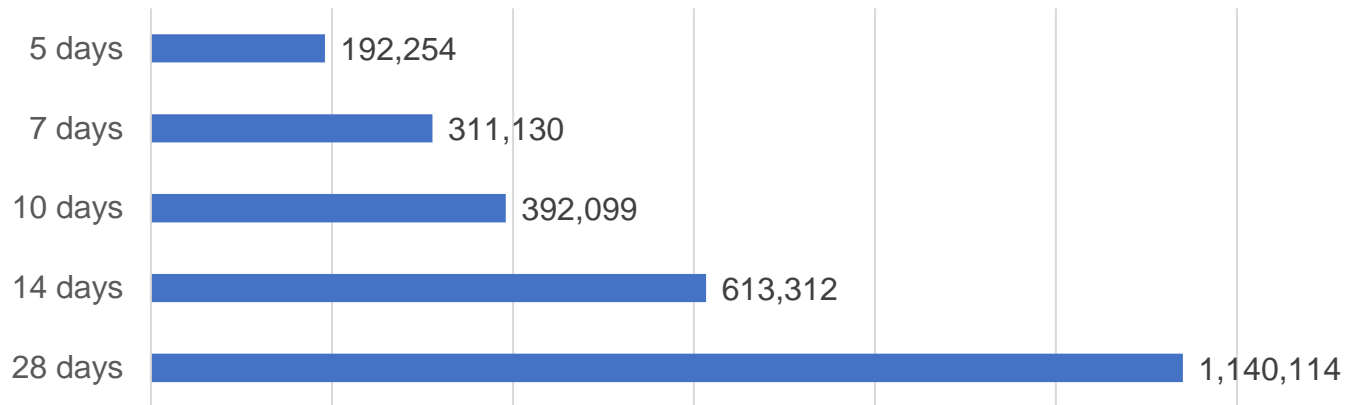
Doses Administered by Week



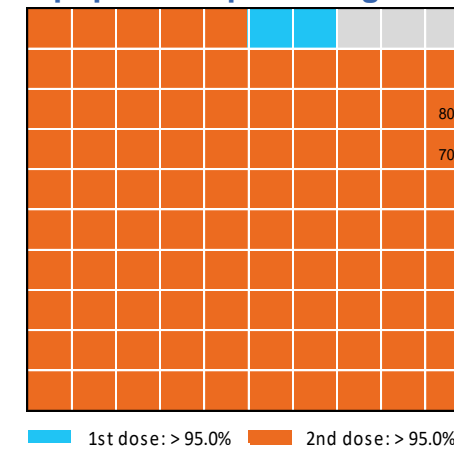
Doses by administration month and vaccine type



Doses Reported



Eligible population percentage coverage



*Each square represents 1% of the national population. Squares are filled as milestones are achieved.

*Sourced from the Australian Immunisation Register.

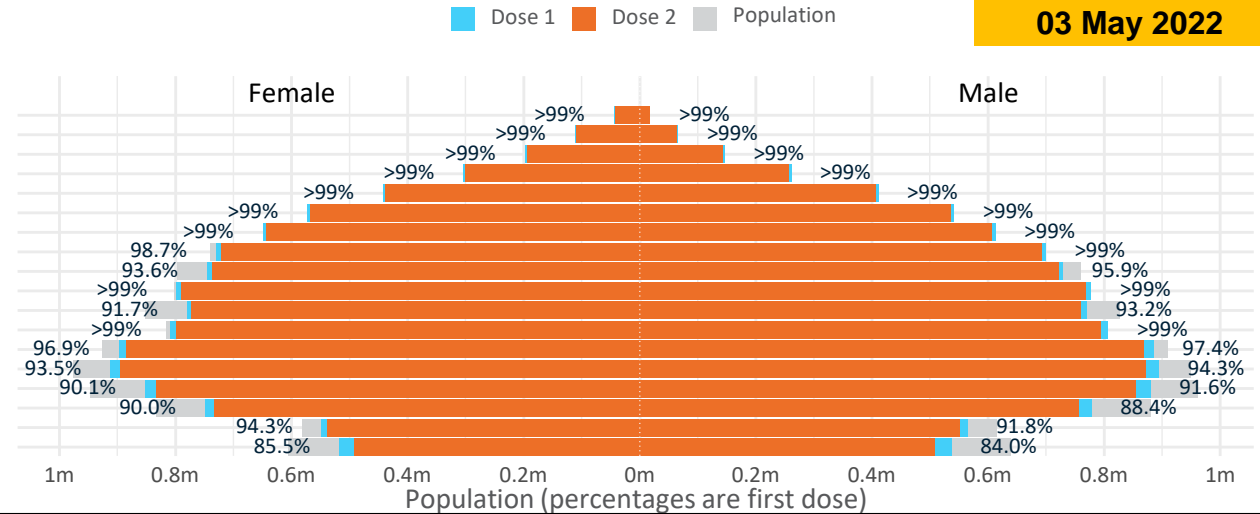
Doses by age and sex

First and second doses by age and sex

	16+	50+	12-15	5-11
Dose 1	97.12% (20,025,111 doses / 20,619,959 people)	>99% (8,865,093 doses / 8,749,703 people)	84.77% (1,054,580 doses / 1,243,990 people)	52.83% (1,202,834 doses / 2,276,638 people)
Dose 2	95.50% (19,692,444 doses / 20,619,959 people)	>99% (8,758,665 doses / 8,749,703 people)	80.38% (999,933 doses / 1,243,990 people)	37.12% (845,183 doses / 2,276,638 people)

Data as at: 03 May 2022

Age	Dose 1	Dose 2
95+	62,294 (>99%)	58,898 (>99%)
90-94	177,682 (>99%)	172,057 (>99%)
85-89	344,641 (>99%)	337,657 (>99%)
80-84	564,755 (>99%)	557,470 (>99%)
75-79	853,400 (>99%)	845,013 (>99%)
70-74	1,114,769 (>99%)	1,103,787 (>99%)
65-69	1,264,063 (>99%)	1,249,868 (>99%)
60-64	1,430,920 (>99%)	1,414,789 (98.5%)
55-59	1,475,538 (94.9%)	1,459,074 (93.8%)
50-54	1,577,031 (>99%)	1,560,052 (>99%)
45-49	1,551,523 (92.5%)	1,532,966 (91.4%)
40-44	1,617,533 (>99%)	1,593,420 (98.3%)
35-39	1,787,743 (97.4%)	1,755,811 (95.7%)
30-34	1,814,490 (94.3%)	1,773,069 (92.2%)
25-29	1,742,357 (91.4%)	1,695,177 (88.9%)
20-24	1,533,225 (89.5%)	1,494,083 (87.3%)
16-19	1,113,147 (93.1%)	1,089,253 (91.1%)
12-15	1,054,580 (84.8%)	999,933 (80.4%)

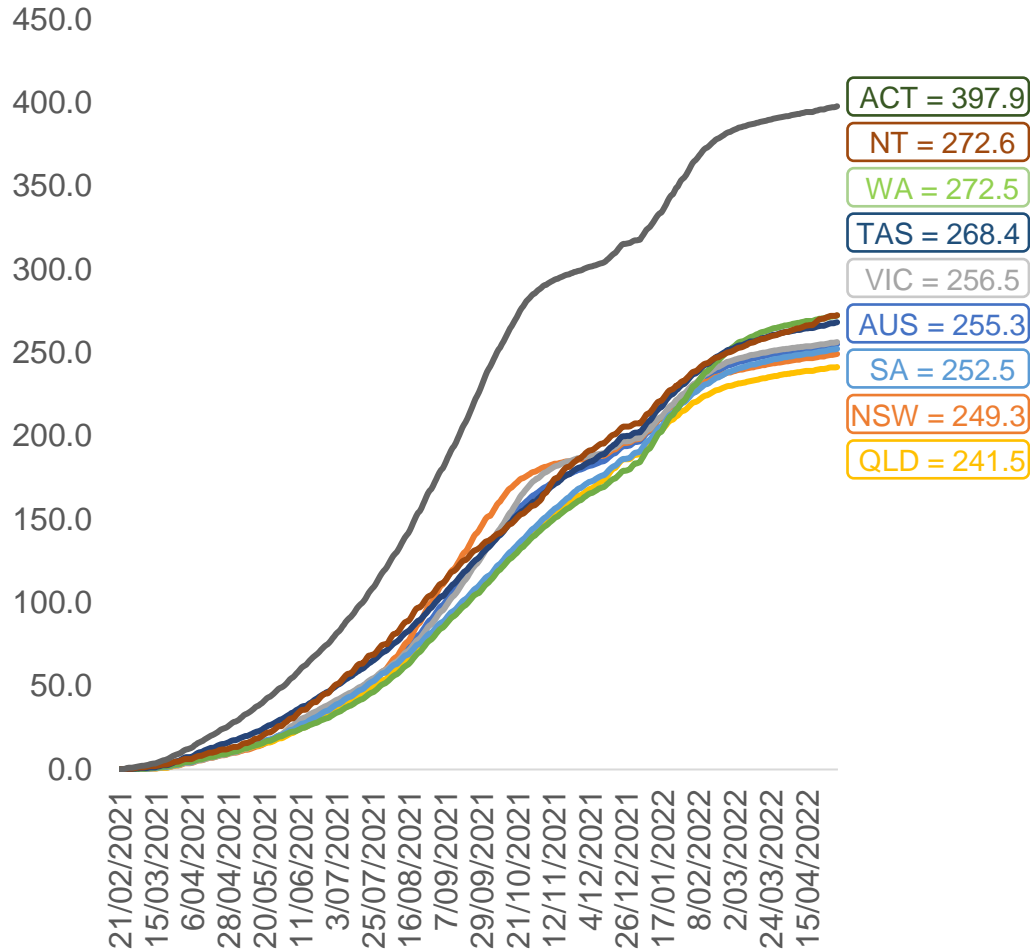


	AUS	ACT	NSW	NT	QLD	SA	TAS	VIC	WA
16 and over - dose 1	20,025,111	352,174	6,318,397	173,941	3,853,199	1,372,908	444,380	5,152,871	2,091,641
16 and over - dose 2	19,692,444	346,651	6,222,889	169,165	3,789,163	1,343,381	435,239	5,076,587	2,060,128
16 and over - population	20,619,959*	344,037	6,565,651	190,571	4,112,707	1,440,400	440,172	5,407,574	2,114,978
16 and over % with dose 1	97.12%	>99%	96.23%	91.27%	93.69%	95.31%	>99%	95.29%	98.90%
16 and over % with dose 2	95.50%	>99%	94.78%	88.77%	92.13%	93.26%	98.88%	93.88%	97.41%
5 to 11 - dose 1	1,202,834	31,956	358,560	13,250	209,189	84,394	28,803	327,131	141,663
5 to 11 - dose 2	845,183	26,202	255,280	7,989	142,726	60,087	22,631	231,645	94,298
5 to 11 - population	2,276,638	39,789	716,460	24,750	478,731	148,816	45,033	578,499	244,154
5 to 11 % with dose 1	52.83%	80.31%	50.05%	53.54%	43.70%	56.71%	63.96%	56.55%	58.02%
5 to 11 % with dose 2	37.12%	65.85%	35.63%	32.28%	29.81%	40.38%	50.25%	40.04%	38.62%
12 to 15 - dose 1	1,054,580	20,096	324,419	10,856	206,812	68,429	22,942	275,517	115,865
12 to 15 - dose 2	999,933	19,556	310,237	9,790	193,864	64,860	21,860	263,969	107,382
12 to 15 - population	1,243,990	19,693	390,330	13,060	270,146	82,747	26,308	308,611	132,869
12 to 15 % with dose 1	84.77%	>99%	83.11%	83.12%	76.56%	82.70%	87.21%	89.28%	87.20%
12 to 15 % with dose 2	80.38%	>99%	79.48%	74.96%	71.76%	78.38%	83.09%	85.53%	80.82%

*National population will not equal sum of listed jurisdictions due to a small number of people counted in national population residing in some 'other' territories. Sum of state doses will not add to national total as some records are unable to be geocoded to a State or Territory. Doses sourced from Australian Immunisation Register, population from ABS ERP June 2020

Vaccinations by location

Cumulative total doses administered vs eligible state populations*

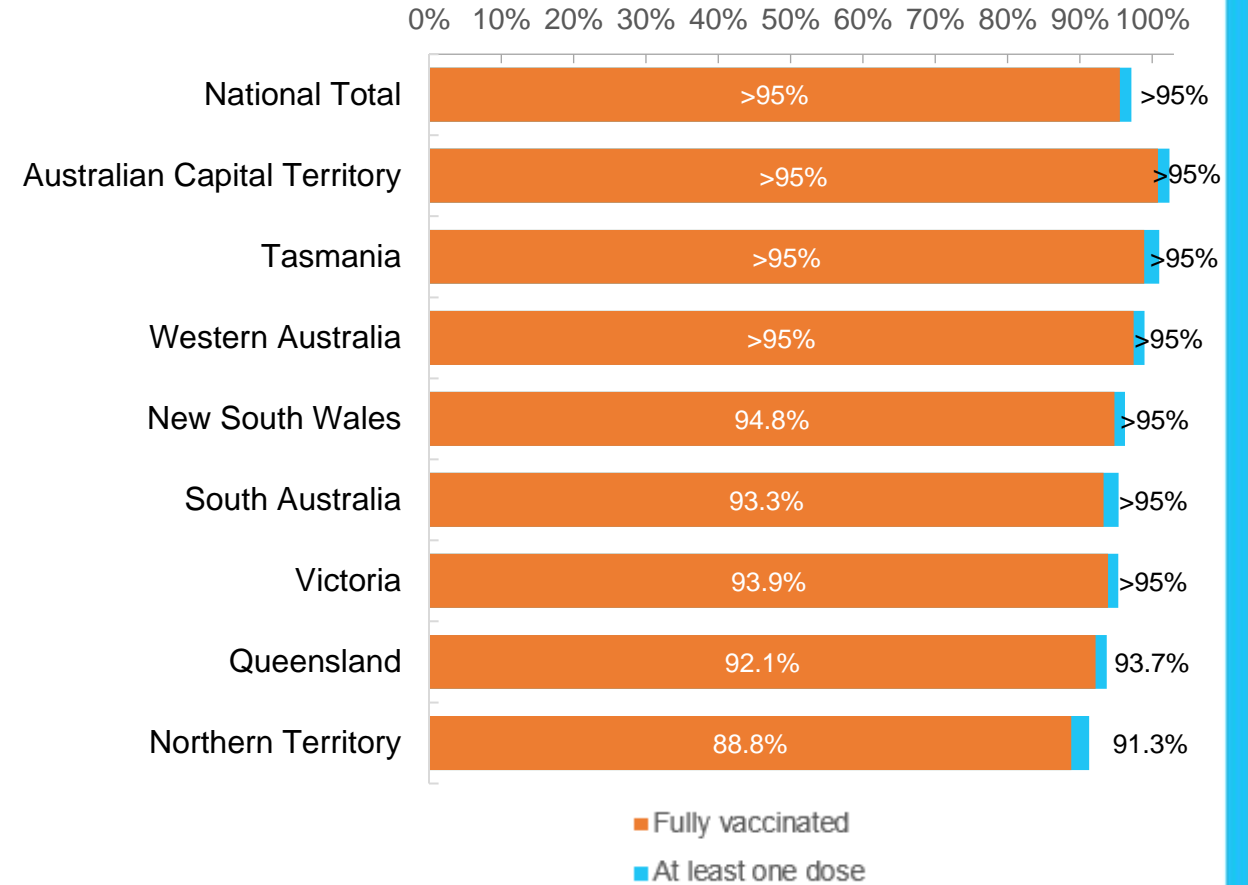


*Not an indication of percentage vaccinated, numbers will exceed 100 due to multiple doses required per person of the population. All doses are included for those aged 12 and above, and are based on vaccination provider location.

Data as at:
03 May 2022

Australia's COVID-19
Vaccine Roadmap

First and Second Doses by residential location



Aboriginal and Torres Strait Islander peoples

Number of people vaccinated

Data as at:
03 May 2022
Updated weekly

Australia's COVID-19
Vaccine Roadmap



439,739

people over the age of 16
have had at least one dose

84.5%

of people over the age of 16
have had at least one dose



420,457

people over the age of 16
are fully vaccinated

80.8%

of people over the age of 16 are
fully vaccinated



People aged 12 – 15 years

48,551

42,734

68.3%

60.1%

At least one dose

Fully vaccinated

178 Aboriginal community controlled health services (ACCHS)

0#	50	27	44	12	3	21	21
ACT	NSW	NT	QLD	SA	TAS	VIC	WA

Medicare Address State ^{##}	Individuals Dose 1	Individuals Dose 1 %	Individuals Dose 2	Individuals Dose 2 %
Australian Capital Territory	4,791	90.9%	4,672	88.7%
New South Wales	135,024	86.7%	131,916	84.8%
Northern Territory	41,579	89.5%	39,405	84.8%
Queensland	115,558	81.4%	110,018	77.5%
South Australia	19,896	80.0%	18,461	74.3%
Tasmania	13,892	88.6%	13,485	86.0%
Victoria	35,452	89.8%	34,662	87.8%
Western Australia	53,624	86.3%	49,606	79.8%
Unknown/Other Territories	19,923	68.8%	18,232	62.9%
Totals	439,739	84.5%	420,457	80.8%

Source: Australian Immunisation Register

*Identifying as Aboriginal and Torres Strait Islander is optional and the estimated population may be under reported.

**Includes all Aboriginal and Torres Strait Islander peoples who have received a vaccination, not limited to those administered in an ACCHS setting

#ACCHS in the ACT are currently operating as a Commonwealth Vaccine Clinics so not included to avoid double counting

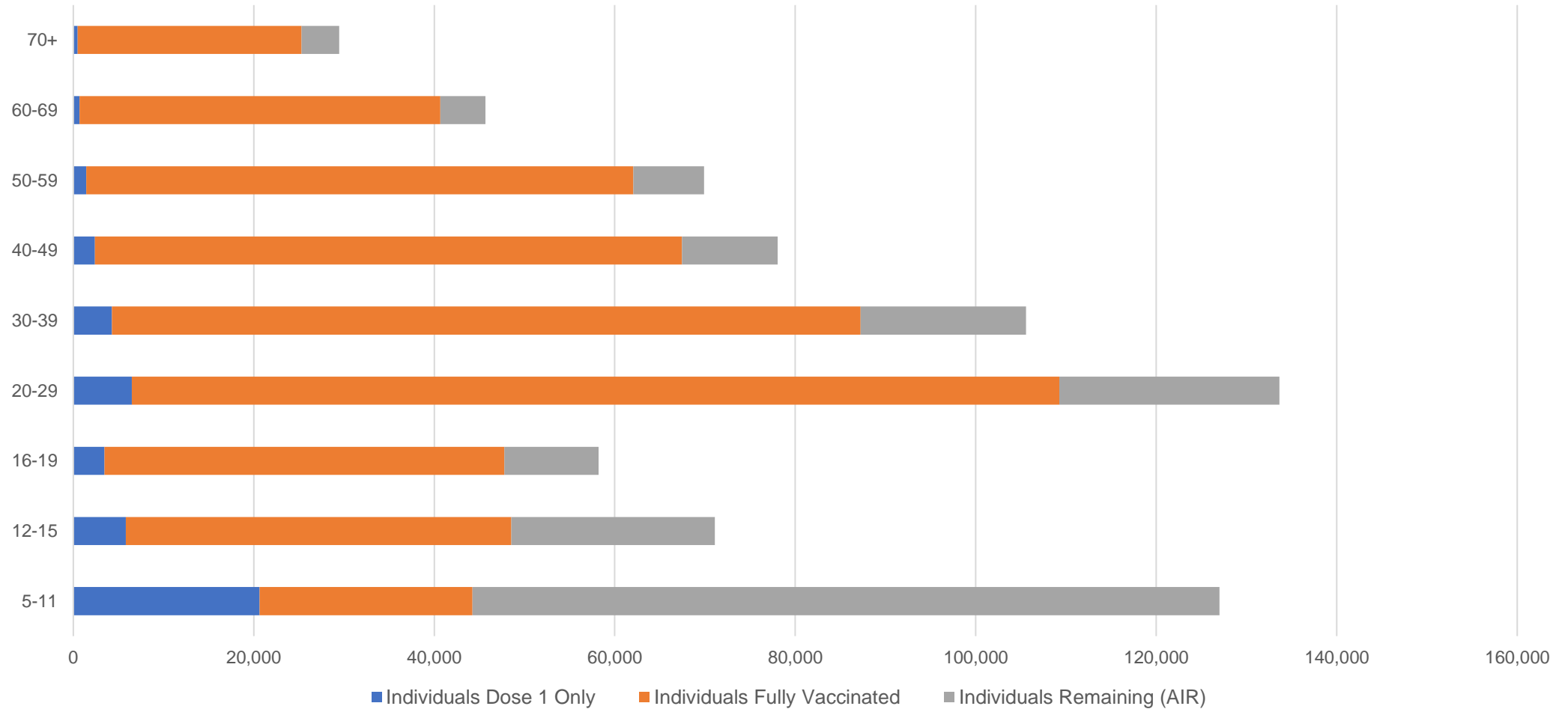
##The above table includes all identified Aboriginal and Torres Strait Islander people who are aged 16 and above by their state of residence.

Aboriginal and Torres Strait Islander peoples

Number of people vaccinated by age

Data as at:
03 May 2022
Updated weekly

Australia's COVID-19
Vaccine Roadmap



Source: Australian Immunisation Register

Commonwealth primary care

Data as at:
03 May 2022

Australia's COVID-19
Vaccine Roadmap



Primary care vaccine administration sites

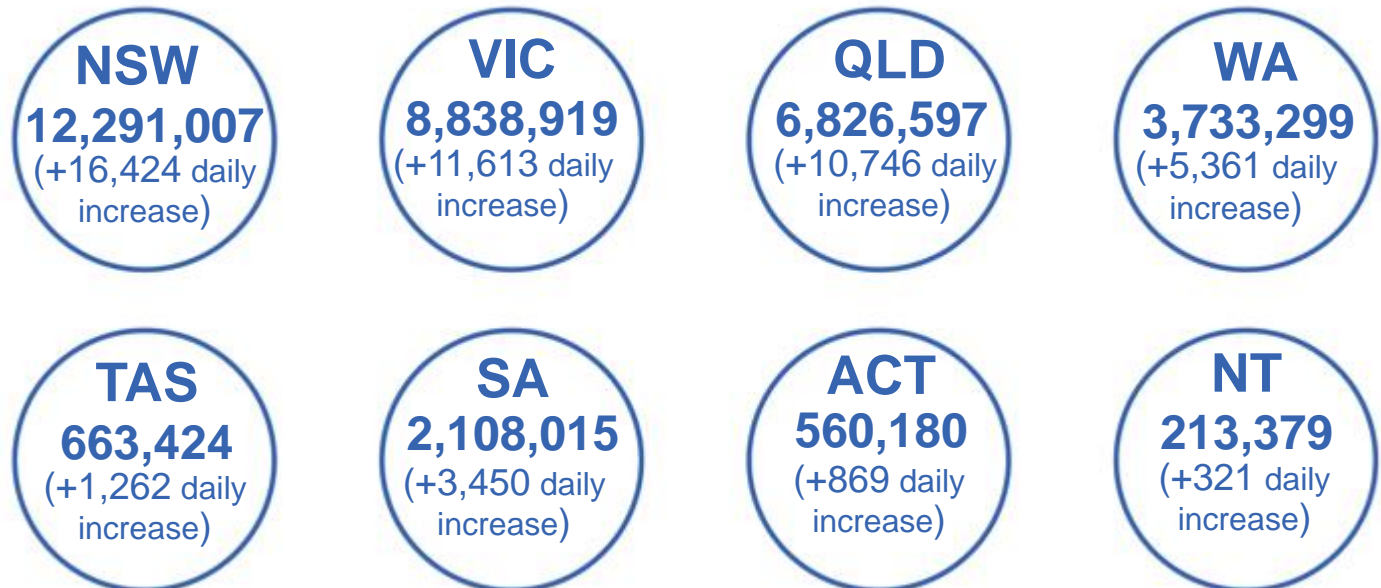
5,803	128	178	3,599
GPs	CVCs	ACCHS	Pharmacies



35,542,699 total vaccine doses administered
primary care settings as at 03 May
+ 50,015 recorded in the last 24 hours

Primary care vaccinations by provider type

	Doses administered	Daily increase	7 day increase
General Practice* includes other Commonwealth	28,588,656	35,928	181,840
Pharmacy	6,954,043	14,087	78,366



307,879

doses administered to persons
residing in other territories or with
missing residential information

*General practice includes Commonwealth Vaccination Clinics, Aboriginal Community Health Centres, Royal Flying Doctor Service and other Commonwealth vaccination facilities

Source: Australian Immunisation Register

Data as at:
03 May 2022

Commonwealth aged care and disability doses administered



1,276,469 (+ 595 last 24 hours)

Total vaccine doses administered in aged care and disability facilities as at 03 May

Number of doses administered as part of the Commonwealth aged and disability care rollout

NSW
559,918
(+149 daily increase)

VIC
236,584
(+258 daily increase)

QLD
203,217
(+45 daily increase)

WA
108,354
(+61 daily increase)

TAS
23,118
(+20 daily increase)

SA
84,132
(+51 daily increase)

ACT
17,155
(<10 daily increase)

NT
7,525
(<10 daily increase)

36,466

doses administered to persons residing in other territories or with missing residential information

*Sourced from the Australian Immunisation Register. Includes all persons vaccinated at participating residential aged care, disability and related industry settings.

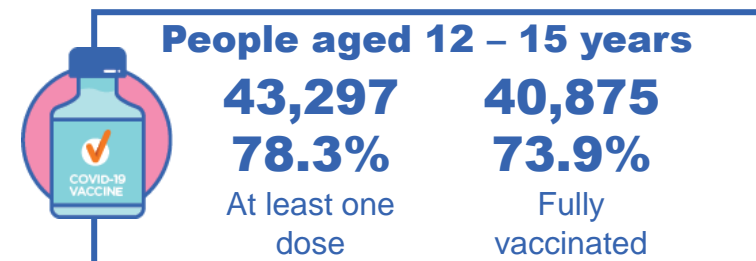
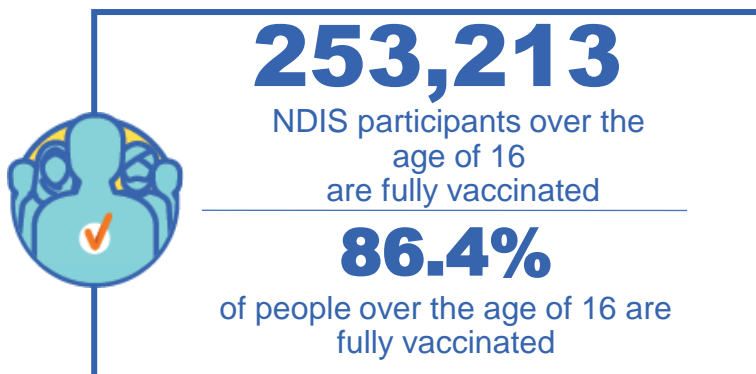
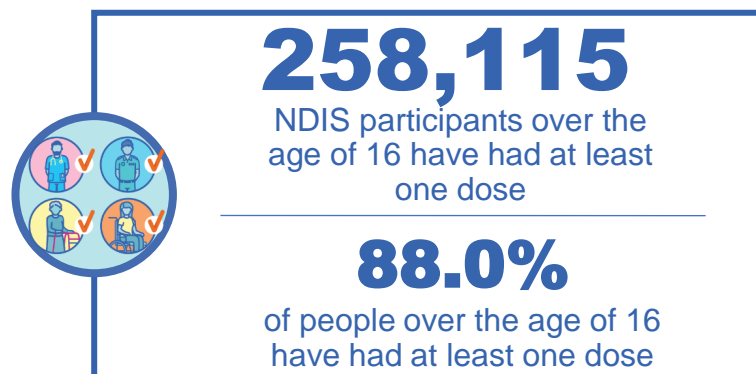
**State level breakdown indicates the residential location and may not align to the state in which the vaccination occurred.

Source: Australian Immunisation Register

National Disability Insurance Scheme (NDIS) reported vaccinations

Data as at:
28 April 2022
Updated weekly

Australia's COVID-19
Vaccine Roadmap



NDIS participant vaccinations

	People aged 16+ with at least one dose	People aged 16+ fully vaccinated	% People aged 16+ with at least one dose	% People aged 16+ fully vaccinated
ACT	4,872	4,807	89.8%	88.6%
NSW	79,259	77,947	88.3%	86.9%
NT	2,231	2,161	78.2%	75.7%
QLD	50,903	49,915	86.5%	84.8%
SA	21,060	20,533	85.8%	83.7%
TAS	6,462	6,307	87.9%	85.8%
VIC	68,696	67,473	89.2%	87.6%
WA	24,632	24,070	89.5%	87.4%
National	258,115	253,213	88.0%	86.4%

Source: Linkage between National Disability Insurance Agency data and the Australian Immunisation Register. Total NDIS participant numbers as at 28 February. Australian Immunisation Register data as at 27 April. Includes all participants regardless of residence type.

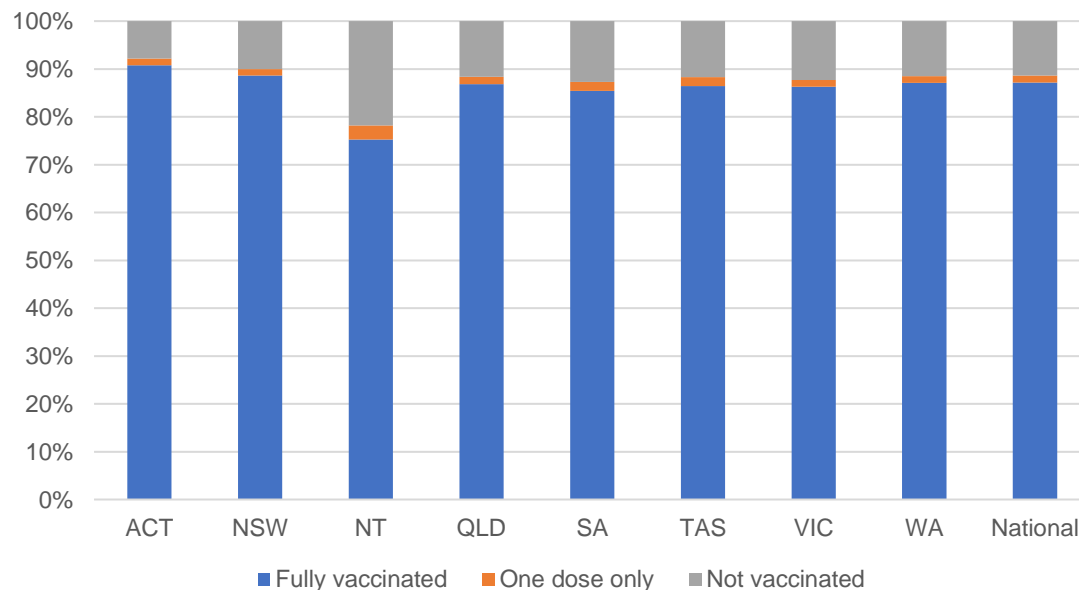
National Disability Insurance Scheme (NDIS) reported vaccinations

Data as at:
28 April 2022
Updated Weekly

Australia's COVID-19
Vaccine Roadmap

NATIONAL	Total people with at least one dose	People fully vaccinated	Total number of individuals in cohort	% People with at least one dose	% People fully vaccinated
NDIS participants living in disability accommodation	20,760	20,423	23,352	88.9%	87.5%

NDIS participants in disability and aged care accommodation



Source: Linkage between National Disability Insurance Agency data and the Australian Immunisation Register. Includes participants residing in disability accommodation only.
Source: Total NDIS participant numbers as at 28 February. Participant data as at 27 April. Australian Immunisation Register data as at 27 April. Worker data as at 28 April.

NDIS workforce vaccinations

	NDIS workers with at least one dose	NDIS workers fully vaccinated	% NDIS workers with at least one dose	% NDIS workers fully vaccinated
NSW	121,663	117,932	98.2%	95.2%
VIC	116,682	112,949	98.4%	95.2%
QLD	69,644	68,794	97.5%	96.3%
WA	32,930	31,241	98.6%	93.6%
SA	35,456	32,934	98.5%	91.5%
TAS	10,720	10,503	99.6%	97.6%
ACT	3,510	3,462	99.0%	97.6%
NT	3,447	3,298	99.4%	95.1%
TOTAL	394,052	381,113	98.2%	95.0%

Source: the NDIS Commission has established a requirement for registered NDIS providers who provide intensive disability support services to report on the vaccination status of workers they employ, or otherwise engage, to deliver NDIS-funded supports and services, and who are required to be vaccinated in accordance with in-force state and territory public health orders. The statistics reflect data reported to the NDIS Commission by registered NDIS providers and should be considered indicative and subject to change

Note: Some registered NDIS providers are yet to report on the vaccination status of their workforce. The NDIS Commission is working with those providers around reporting requirements.

Remaining workers not included include those exempt from vaccination requirements, workers whose vaccination status is not yet verified by the provider (such as workers on leave) and provider reporting anomalies.

Residential aged care vaccination rollout

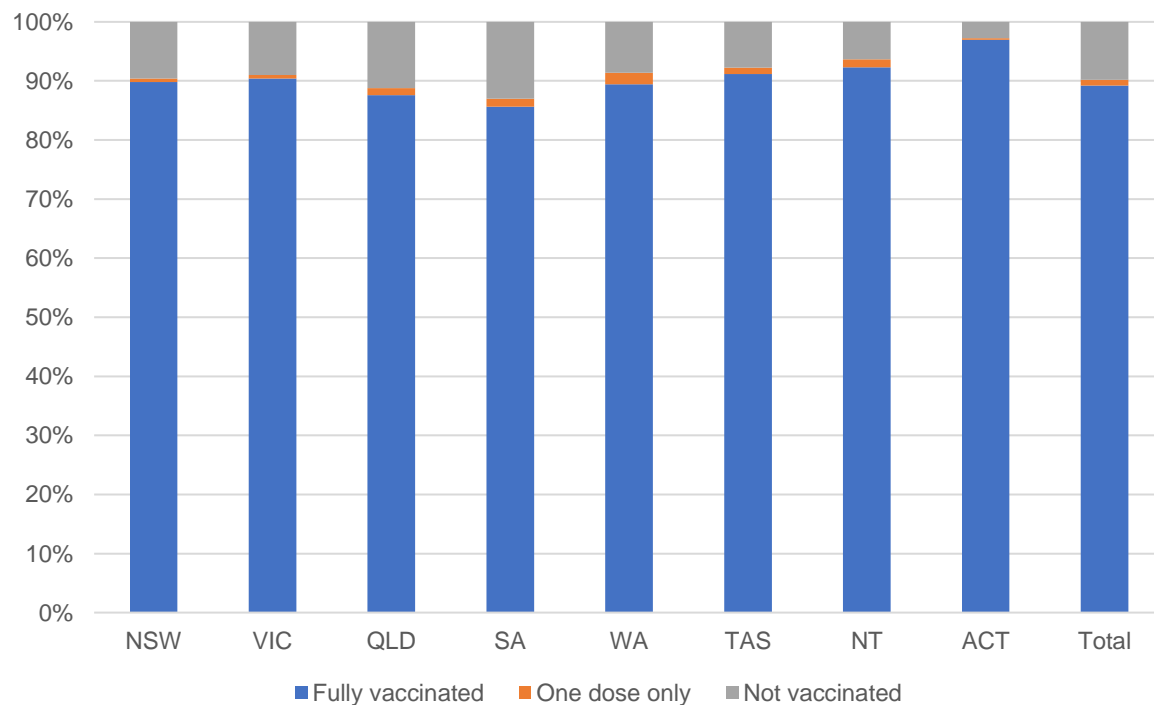
Data as at:
28 Apr 2022
Updated weekly

Residential aged care facilities status

170,624 **172,394**

People fully vaccinated People with at least one dose

Aged care resident vaccinations



Aged care worker vaccinations

Jurisdictions	Total workers with at least one dose	Workers fully vaccinated	% Workers with at least one dose	% Workers fully vaccinated
NSW	75,060	75,053	96.4%	96.4%
VIC	65,066	65,062	94.7%	94.7%
QLD	45,853	45,616	95.2%	94.7%
SA	26,224	26,208	96.1%	96.1%
WA	24,071	24,069	99.2%	99.2%
TAS	7,547	7,544	99.9%	99.9%
NT	902	902	100.0%	100.0%
ACT	2,855	2,855	93.9%	93.9%
Total	247,578	247,309	96.0%	95.9%

Source: My Aged Care Portal vaccination progress

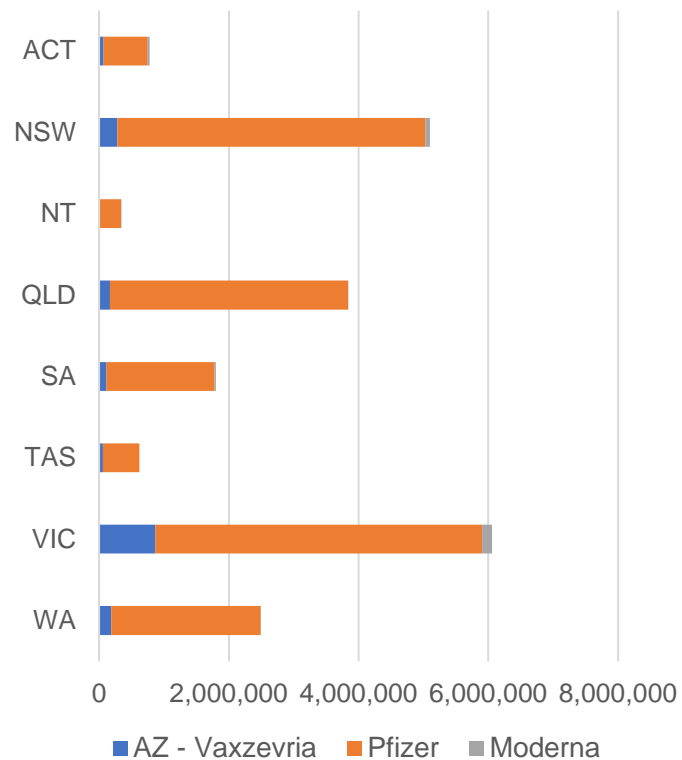
*Status updates are provided by facilities at least once per week. Reporting is updated Monday to Friday to encompass different facility updates being made on different days.

Data is sourced directly from Aged Care Service Providers and is not drawn or closely aligned with data from AIR due to inconsistencies and potential lags in uploading of records.

Data as at:
03 May 2022

Jurisdiction administered

Total vaccine doses administered in State and Territory clinics as at 03 May



21,040,924 total vaccine doses administered in State and Territory clinics as at 03 May
 + **6,127** recorded in the last 24 hours
 + **47,849** recorded in the last 7 days

NSW
5,103,079
 (+889 daily increase)

VIC
6,062,455
 (+1,586 daily increase)

QLD
3,838,584
 (+602 daily increase)

WA
2,493,678
 (+1,087 daily increase)

TAS
620,232
 (+216 daily increase)

SA
1,803,213
 (+632 daily increase)

ACT
779,045
 (+787 daily increase)

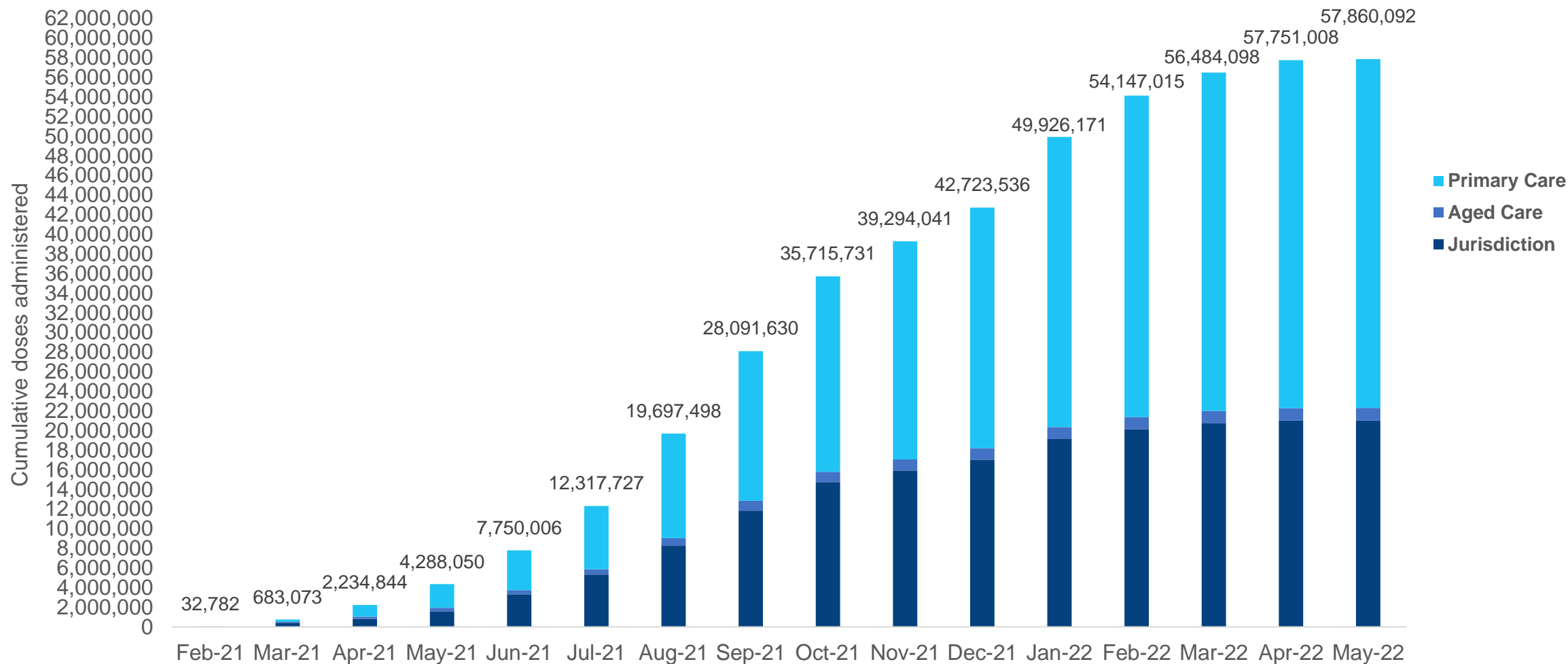
NT
340,638
 (+328 daily increase)

*Sourced from the Australian Immunisation Register. Numbers are calculated as difference in daily cumulative reported numbers to allow for historical corrections.

Source: Australian Immunisation Register

Cumulative doses administered by channel

Data as at:
03 May 2022



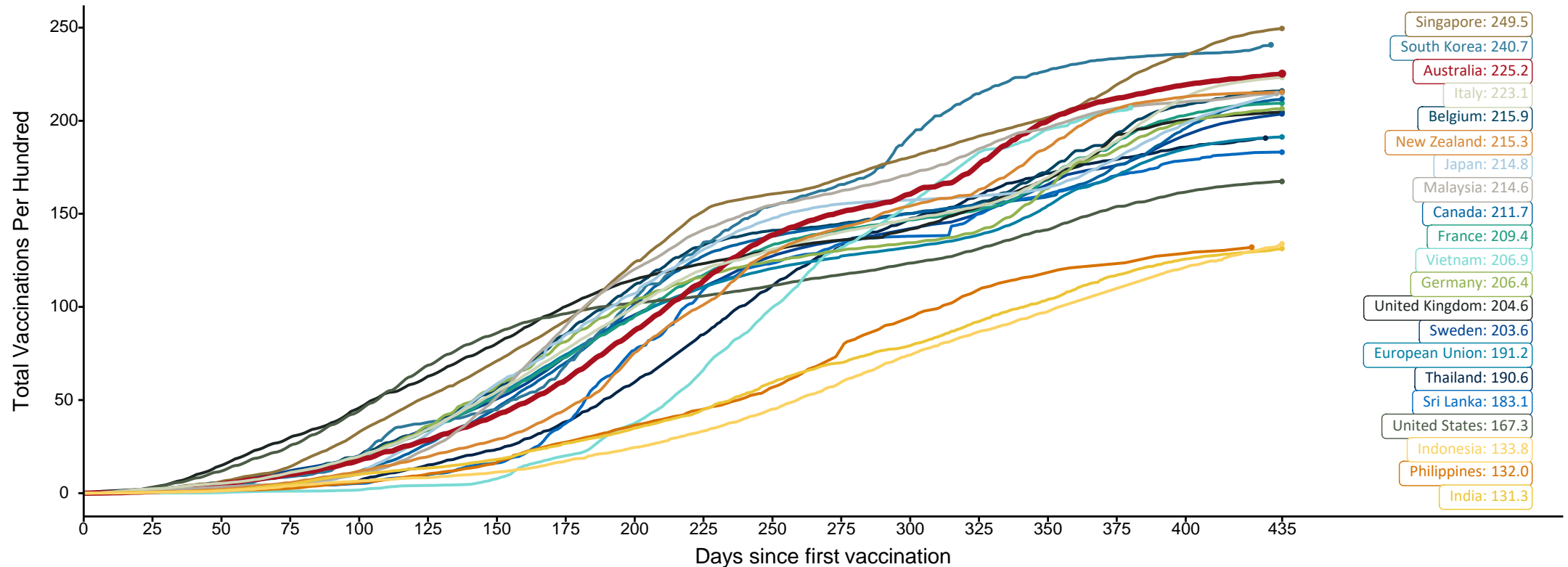
Source: Australian Immunisation Register

Doses at equivalent stages of rollout (Day 435)

Data as at:
03 May 2022

The x-axis is truncated at the length of Australia's vaccination program. Countries with intermittent reporting have had their doses per 100 imputed to Australia's current stage of rollout. Israel excluded as it is beyond scale of the graph


Cumulative doses administered (03 May): **57,860,092**



Note: From 11 January 2022, data for Australia includes all doses administered to people 5 and over. Prior to 11 January, data was for 12 and over.
Source: Department of Health (Australia), Our World in Data (international)
Latest data: 03 May

Pandemic Response Payments

Data as at midnight: 1 May 2022
Updated weekly



2.38 million
People have received at least one COVID Disaster Payment (including ISP200)

\$14.35 billion
Paid Out as at 1 May 2022


7.86 million
Claims granted across three different payments



93%
of Claims Received Digitally



COVID Disaster Payment:	5.89 million claims received - 2.19 million individuals paid a total of \$12.59 billion.
\$200 Income Support Payment:	353,000 claims received - 183,000 individuals paid a total of \$268.9 million.
Pandemic Leave Disaster Payment:	2.12 million claims received - 1.29 million individuals paid a total of \$1.49 billion.



THREE PAYMENTS AVAILABLE

COVID Disaster Payment
assisting during a lockdown event in a Commonwealth hotspot.

Income Support Payment \$200
for income support recipients who lost at least 8 hours of work.

Pandemic Leave Disaster Payment
for those who have to self-isolate, quarantine or care.

For more information visit:
servicesaustralia.gov.au

COVID-19 DISASTER PAYMENTS

Northern Territory
Lockdown (#3) from 16 Nov to 22 Nov
Claiming period ended 27 Dec

7,500 people have received at least one COVID Disaster Payment.

\$6.9m paid out as at 1 May 2022.

Nil paid in initial payments in the week ending 1 May 2022.

Cumulative payments made by Territory since activation on 25 Aug 2021.



Date	Cumulative Payments
3 Apr	\$6.9m
10 Apr	\$6.9m
17 Apr	\$6.9m
24 Apr	\$6.9m
1 May	\$6.9m

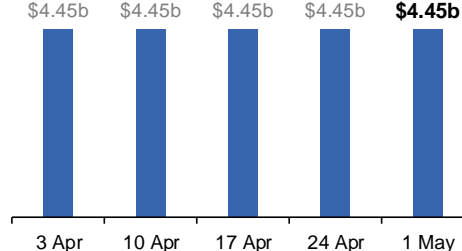
Victoria
Lockdown (#6) from 6 Aug to 28 Oct
Claiming period ended 9 Dec

745,000 people have received at least one COVID Disaster Payment.

\$4.45b paid out as at 1 May 2022.

Nil paid in initial and reoccurring payments in the week ending 1 May 2022.

Cumulative payments made by State since activation on 8 Jun 2021.



Date	Cumulative Payments
3 Apr	\$4.45b
10 Apr	\$4.45b
17 Apr	\$4.45b
24 Apr	\$4.45b
1 May	\$4.45b

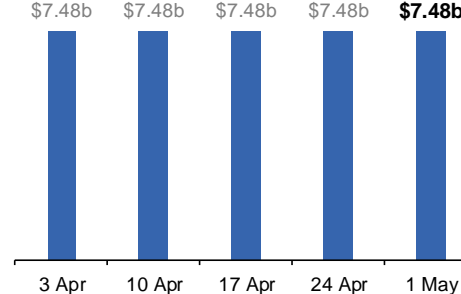
New South Wales
Lockdown from 24 Jun to 10 Oct
Claiming period ended 27 Nov

1.08m people have received at least one COVID Disaster Payment.

\$7.48b paid out as at 1 May 2022.

Nil paid in initial and reoccurring payments in the week ending 1 May 2022.

Cumulative payments made by State since activation on 1 Jul 2021.



Date	Cumulative Payments
3 Apr	\$7.48b
10 Apr	\$7.48b
17 Apr	\$7.48b
24 Apr	\$7.48b
1 May	\$7.48b

Australian Capital Territory
Lockdown from 12 Aug to 14 Oct
Claiming period ended 25 Nov

65,000 people have received at least one COVID Disaster Payment.

\$344.7m paid out as at 1 May 2022.

Nil paid in initial and reoccurring payments in the week ending 1 May 2022.

Cumulative payments made by Territory since activation on 20 Aug 2021.



Date	Cumulative Payments
3 Apr	\$344.7m
10 Apr	\$344.7m
17 Apr	\$344.7m
24 Apr	\$344.7m
1 May	\$344.7m

Pandemic Response Payments (continued)

Data as at midnight: 1 May 2022
Updated weekly

COVID-19 DISASTER PAYMENTS

