



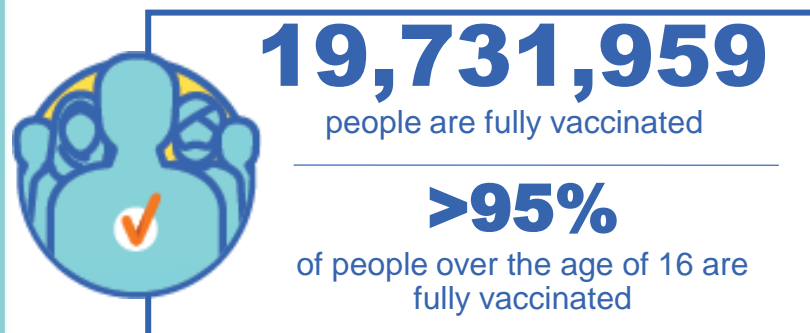
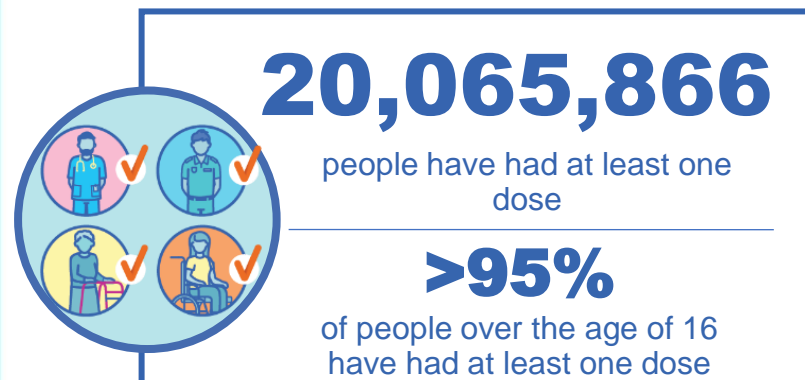
Australian Government
Operation COVID Shield

COVID-19 Vaccine Roll-out

30 May 2022

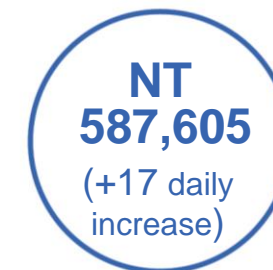
Data as at:
29 May 2022

Total vaccine doses



59,119,148 total vaccine
doses administered nationally as at 29 May

+8,552 recorded in the last 24 hours



*Administration state breakdown indicates state in which a vaccine was administered

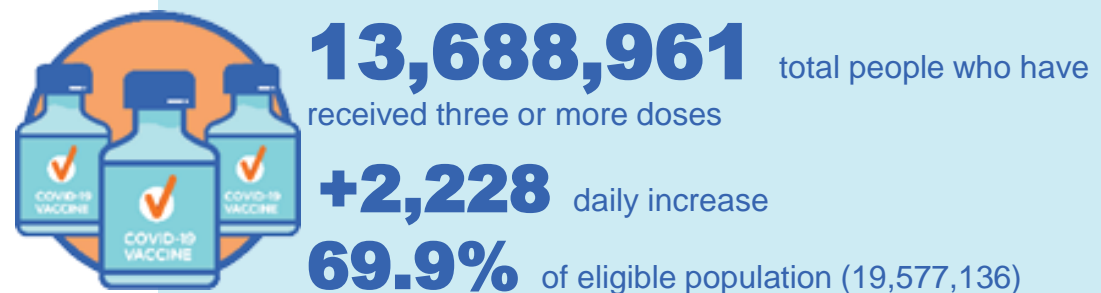
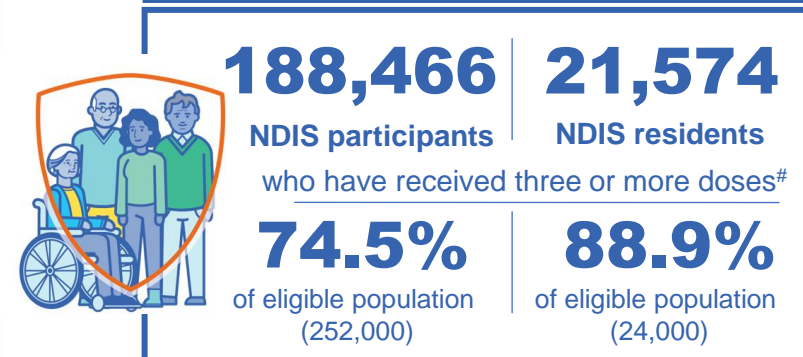
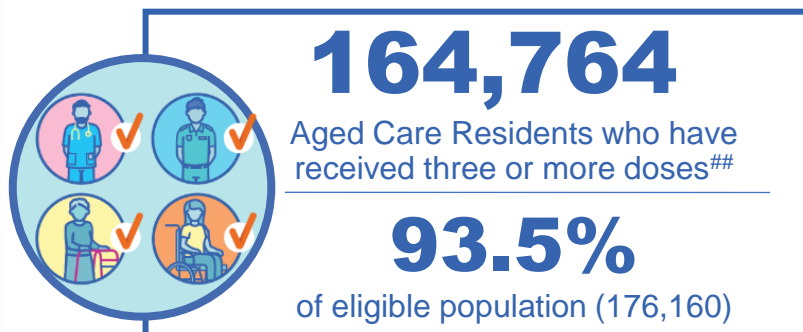
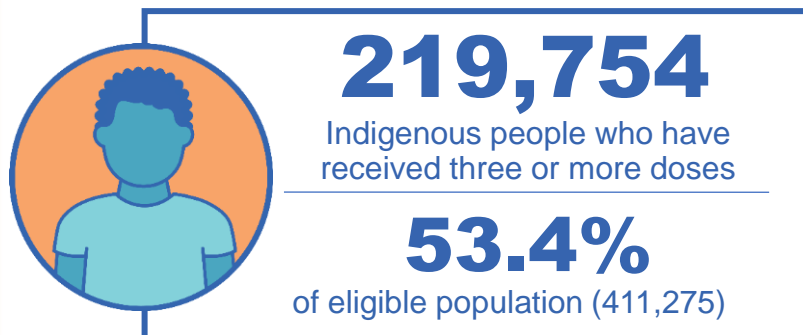
**Overall dose count includes instances of more than three doses per person in a small number of cases.

Source: Australian Immunisation Register

Booster Vaccinations

Australia's COVID-19
Vaccine Roadmap

Data as at:
29 May 2022



	Number of People	Daily Increase	% of Eligible
NSW	4,175,131	444	67.3%
VIC	3,655,149	606	72.2%
QLD	2,369,392	377	63.0%
WA	1,684,022	330	83.2%
SA	974,523	314	73.3%
TAS	312,900	51	72.4%
ACT	271,096	109	78.3%
NT	129,376	<10	77.3%

*People may belong to multiple groups and could be represented in the above breakdowns multiple times.
NDIS participants data as at 25 May 2022. ## Aged Care Residents data as at 27 May 2022.

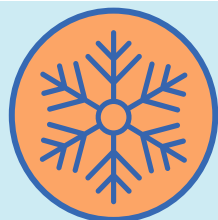
Source: Australian Immunisation Register

117,372 doses administered to persons
residing in other territories or with
missing residential information

Winter / Fourth Doses

Data as at:
29 May 2022

Australia's COVID-19
Vaccine Roadmap



1,473,849 total people (16+) who have received four or more doses

+5,000 daily increase

	Number of People 16+	Daily Increase
ACT	32,064	98
NSW	477,414	1,158
NT	6,601	<10
QLD	280,178	1,267
SA	118,313	413
TAS	41,436	56
VIC	369,797	1,456
WA	141,117	538

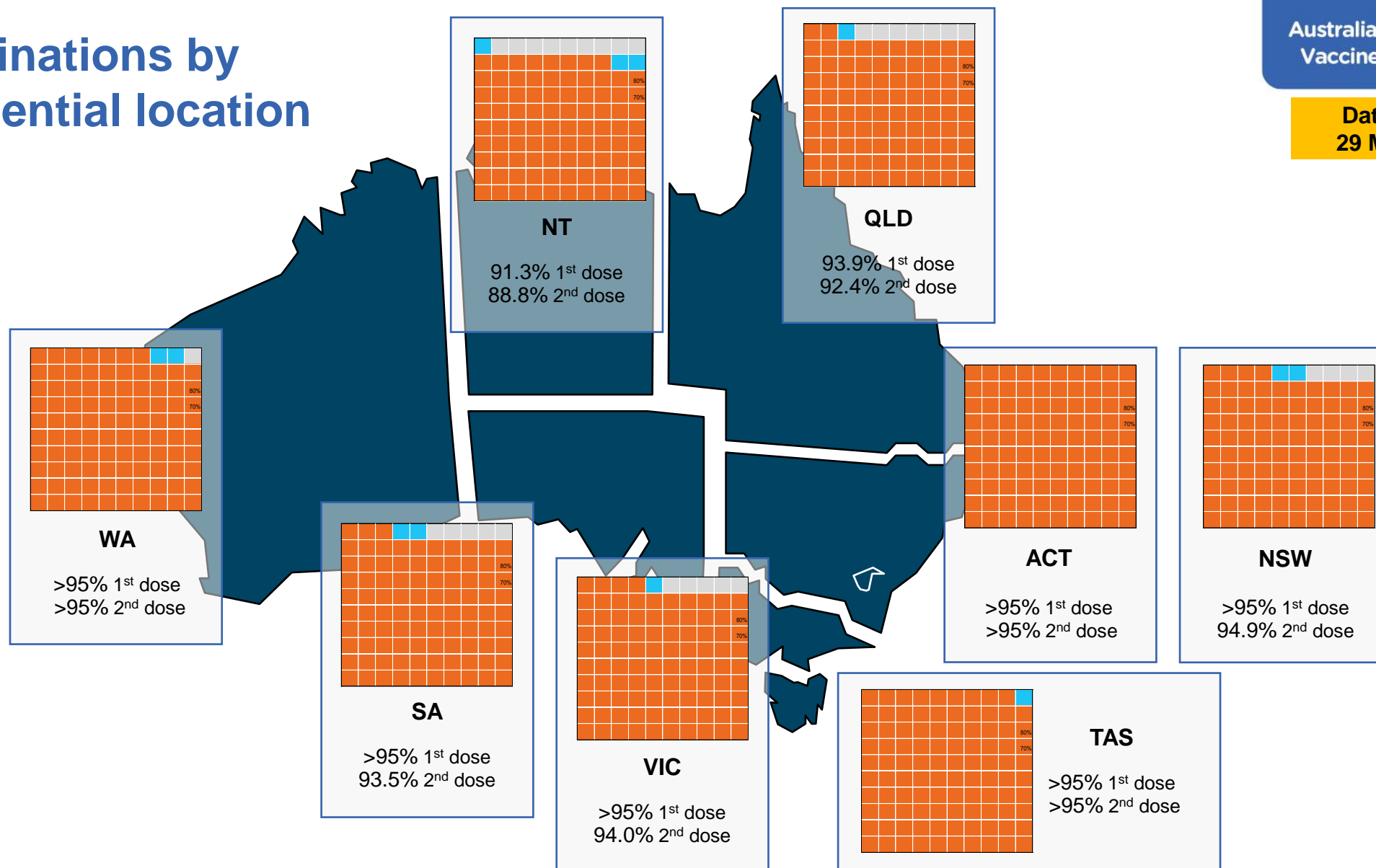
6,929 doses administered to persons
residing in other territories or with
missing residential information

Source: Australian Immunisation Register

Vaccinations by residential location

Australia's COVID-19
Vaccine Roadmap

Data as at:
29 May 2022



*Residential state may differ from the state in which a vaccine was administered

Commonwealth and Jurisdiction vaccine doses administered

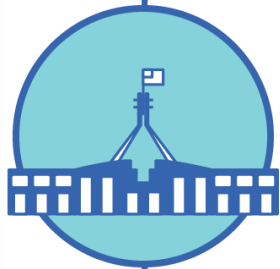
Data as at:
29 May 2022



59,119,148 total vaccine
doses administered nationally as at 29 May
+ 8,552 recorded in the last 24 hours



21,187,827
doses administered by state
and territory facilities
+ 2,151
recorded in the last 24 hours



37,931,321
doses administered by
commonwealth facilities
+ 6,401
recorded in the last 24 hours

36,633,062 total vaccine doses
administered in primary care settings
1,298,259 total vaccine doses
administered in aged care and disability
settings

NSW	Jurisdictions	Commonwealth
Cumulative	5,126,097	13,206,345
Daily increase	384	1,563

VIC	Jurisdictions	Commonwealth
Cumulative	6,101,438	9,425,380
Daily increase	518	1,846

QLD	Jurisdictions	Commonwealth
Cumulative	3,851,432	7,328,592
Daily increase	71	1,788

WA	Jurisdictions	Commonwealth
Cumulative	2,516,479	3,992,302
Daily increase	272	712

TAS	Jurisdictions	Commonwealth
Cumulative	624,406	713,138
Daily increase	101	19

SA	Jurisdictions	Commonwealth
Cumulative	1,827,954	2,270,121
Daily increase	475	398

ACT	Jurisdictions	Commonwealth
Cumulative	795,035	752,824
Daily increase	320	68

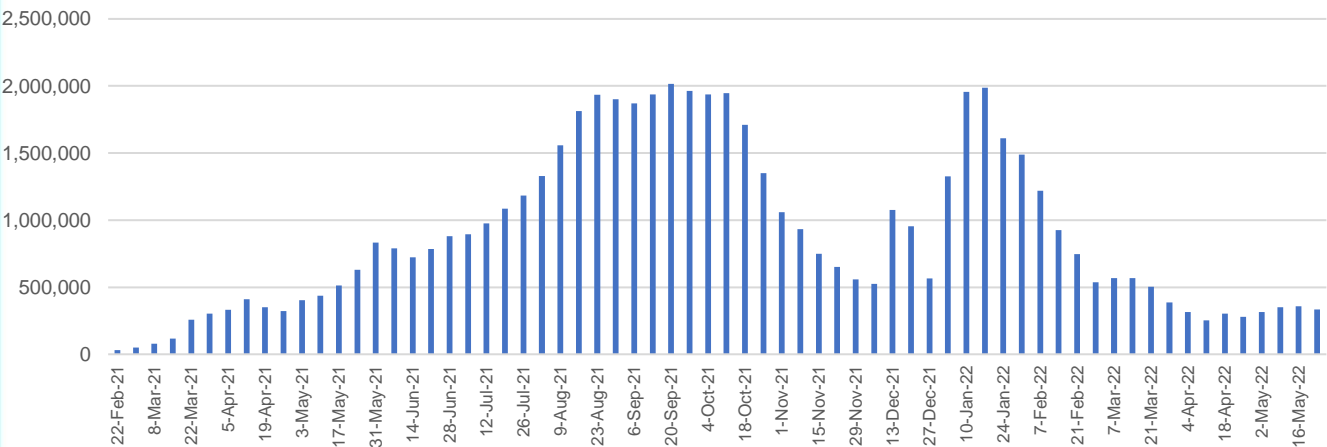
NT	Jurisdictions	Commonwealth
Cumulative	344,986	242,619
Daily increase	10	<10

Vaccine milestone charts

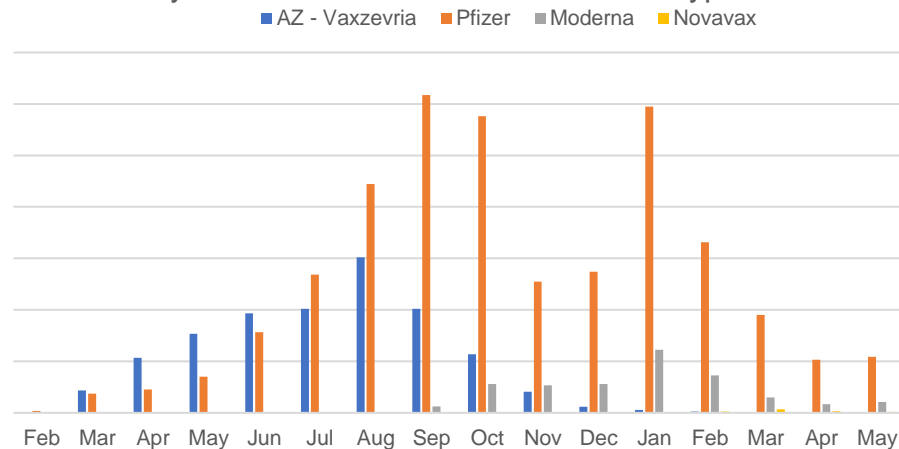
Data as at:
29 May 2022

Australia's COVID-19
Vaccine Roadmap

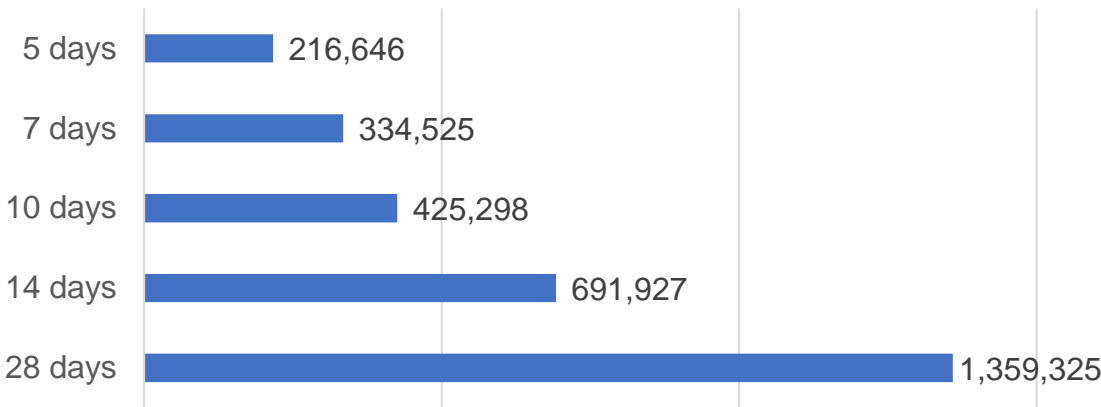
Doses Administered by Week



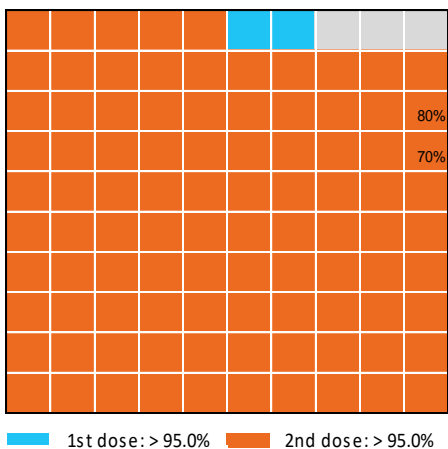
Doses by administration month and vaccine type



Doses Reported



Eligible population percentage coverage



*Each square represents 1% of the national population.
Squares are filled as milestones are achieved.

*Sourced from the Australian Immunisation Register.

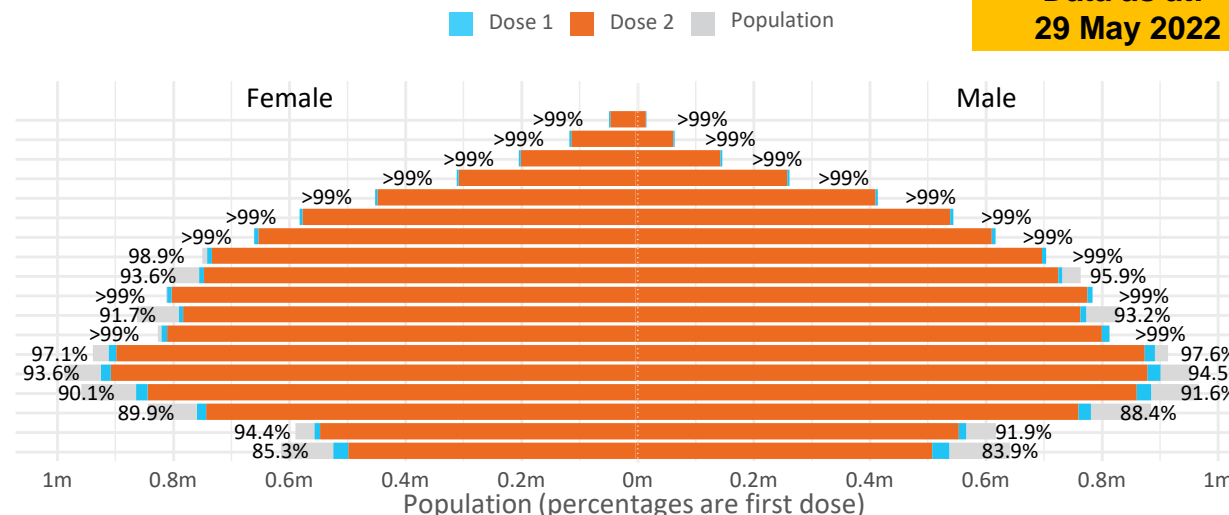
Data as at:
29 May 2022

Doses by age and sex

First and second doses by age and sex

	16+	50+	12-15	5-11
Dose 1	97.31% (20,065,866 doses / 20,619,959 people)	>99% (8,894,616 doses / 8,749,703 people)	84.61% (1,052,509 doses / 1,243,990 people)	52.65% (1,198,733 doses / 2,276,638 people)
Dose 2	95.69% (19,731,959 doses / 20,619,959 people)	>99% (8,787,823 doses / 8,749,703 people)	80.15% (997,092 doses / 1,243,990 people)	38.68% (880,709 doses / 2,276,638 people)

Age	Dose 1	Dose 2
95+	63,882 (>99%)	60,472 (>99%)
90-94	179,834 (>99%)	174,272 (>99%)
85-89	347,762 (>99%)	340,893 (>99%)
80-84	568,337 (>99%)	561,107 (>99%)
75-79	859,204 (>99%)	850,839 (>99%)
70-74	1,116,983 (>99%)	1,105,821 (>99%)
65-69	1,267,379 (>99%)	1,252,920 (>99%)
60-64	1,434,505 (>99%)	1,418,283 (98.7%)
55-59	1,475,729 (94.9%)	1,459,151 (93.8%)
50-54	1,581,001 (>99%)	1,564,065 (>99%)
45-49	1,551,338 (92.5%)	1,532,896 (91.4%)
40-44	1,621,366 (>99%)	1,597,349 (98.6%)
35-39	1,791,128 (97.6%)	1,759,096 (95.9%)
30-34	1,817,231 (94.5%)	1,775,513 (92.3%)
25-29	1,743,333 (91.4%)	1,695,922 (89.0%)
20-24	1,532,630 (89.5%)	1,492,987 (87.2%)
16-19	1,114,224 (93.2%)	1,090,373 (91.2%)
12-15	1,052,509 (84.6%)	997,092 (80.2%)



	AUS	ACT	NSW	NT	QLD	SA	TAS	VIC	WA
16 and over - dose 1	20,065,866	352,858	6,329,615	173,974	3,862,608	1,375,771	445,126	5,162,733	2,096,239
16 and over - dose 2	19,731,959	347,197	6,232,719	169,285	3,798,925	1,346,563	436,097	5,085,527	2,065,055
16 and over - population	20,619,959*	344,037	6,565,651	190,571	4,112,707	1,440,400	440,172	5,407,574	2,114,978
16 and over % with dose 1	97.31%	>99%	96.40%	91.29%	93.92%	95.51%	>99%	95.47%	>99%
16 and over % with dose 2	95.69%	>99%	94.93%	88.83%	92.37%	93.49%	>99%	94.04%	97.64%
5 to 11 - dose 1	1,198,733	31,911	357,742	13,218	207,991	84,047	28,575	326,151	141,271
5 to 11 - dose 2	880,709	27,016	267,919	8,522	147,269	61,921	22,854	240,695	99,925
5 to 11 - population	2,276,638	39,789	716,460	24,750	478,731	148,816	45,033	578,499	244,154
5 to 11 % with dose 1	52.65%	80.20%	49.93%	53.41%	43.45%	56.48%	63.45%	56.38%	57.86%
5 to 11 % with dose 2	38.68%	67.90%	37.39%	34.43%	30.76%	41.61%	50.75%	41.61%	40.93%
12 to 15 - dose 1	1,052,509	20,112	323,570	10,819	206,269	68,376	22,918	275,040	115,817
12 to 15 - dose 2	997,092	19,581	309,248	9,746	193,044	64,683	21,806	263,286	107,350
12 to 15 - population	1,243,990	19,693	390,330	13,060	270,146	82,747	26,308	308,611	132,869
12 to 15 % with dose 1	84.61%	>99%	82.90%	82.84%	76.35%	82.63%	87.11%	89.12%	87.17%
12 to 15 % with dose 2	80.15%	>99%	79.23%	74.62%	71.46%	78.17%	82.89%	85.31%	80.79%

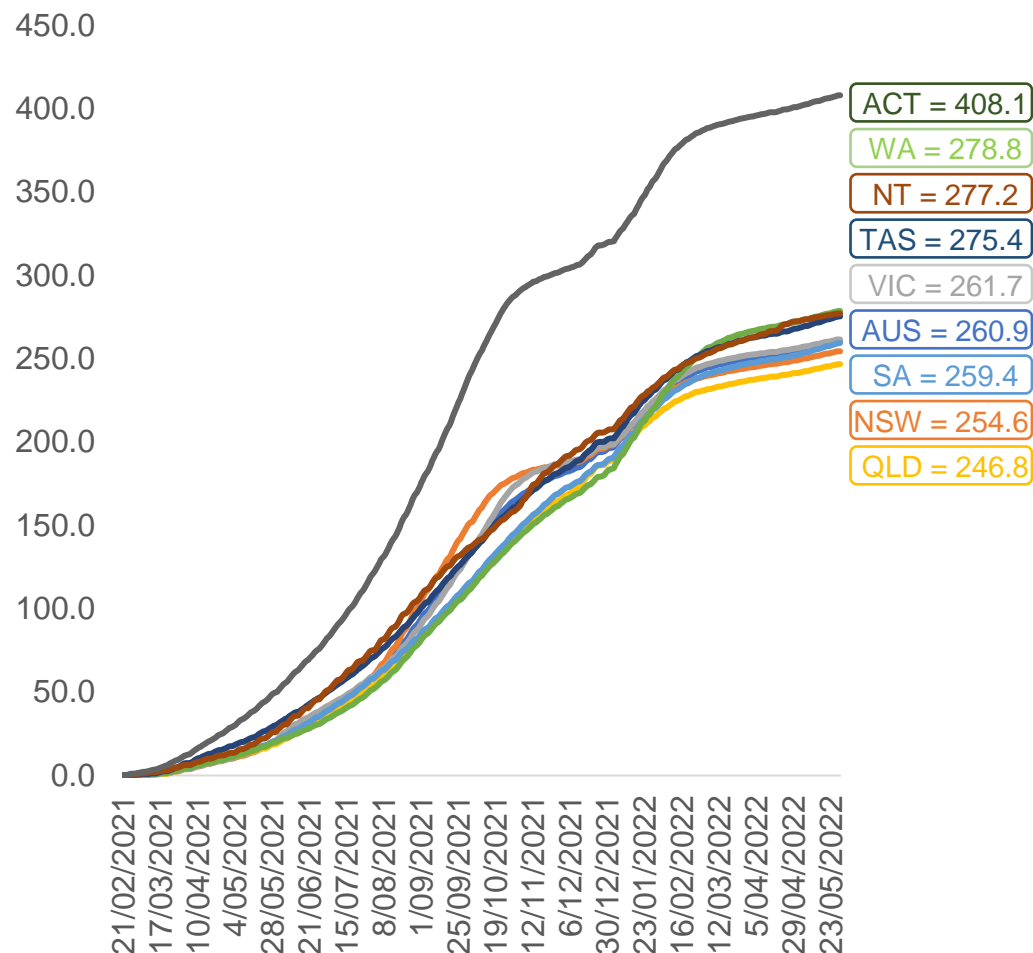
*National population will not equal sum of listed jurisdictions due to a small number of people counted in national population residing in some 'other' territories. Sum of state doses will not add to national total as some records are unable to be geocoded to a State or Territory.
Doses sourced from Australian Immunisation Register, population from ABS ERP June 2020

Vaccinations by location

Data as at:
29 May 2022

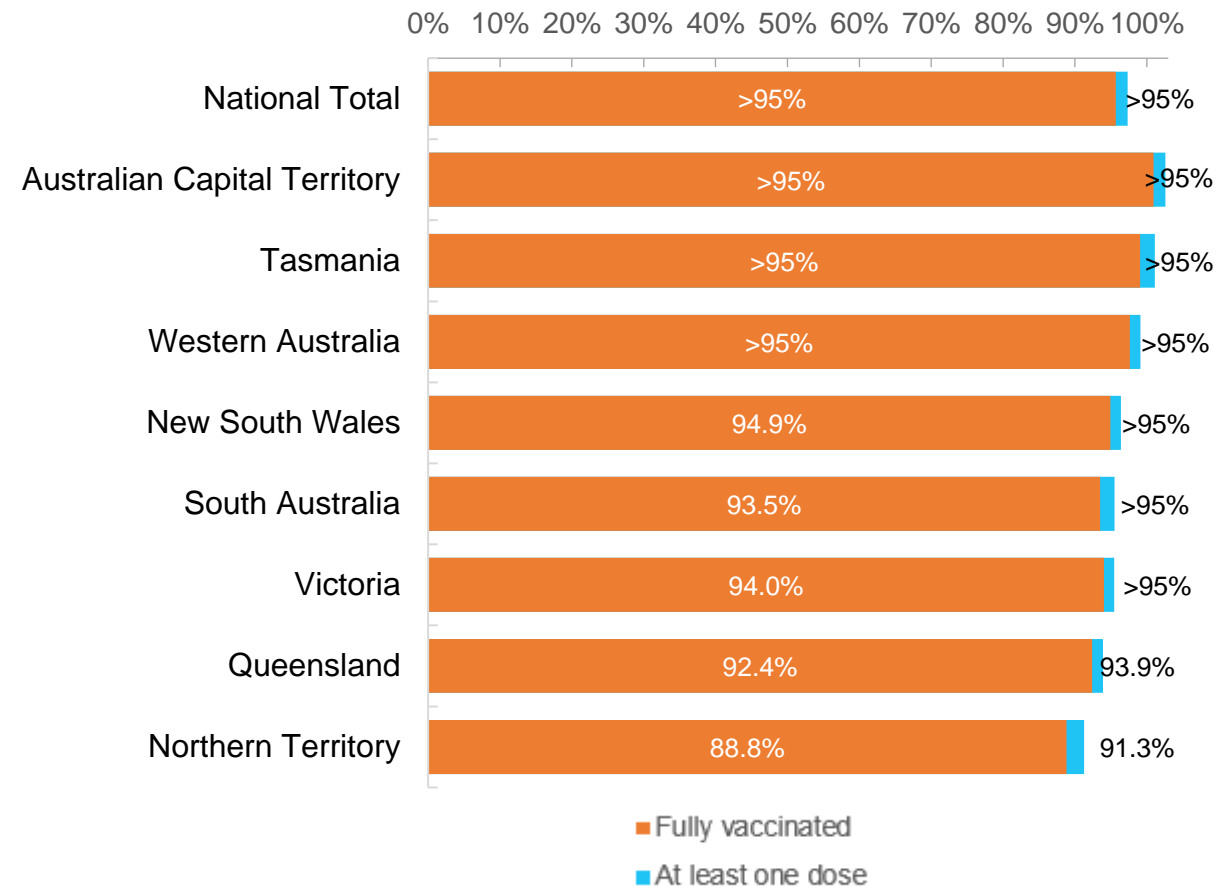
Australia's COVID-19
Vaccine Roadmap

Cumulative total doses administered vs eligible state populations*



*Not an indication of percentage vaccinated, numbers will exceed 100 due to multiple doses required per person of the population.
All doses are included for those aged 12 and above, and are based on vaccination provider location.

First and Second Doses by residential location



Aboriginal and Torres Strait Islander peoples

Number of people vaccinated

Data as at:
24 May 2022
Updated weekly

Australia's COVID-19
Vaccine Roadmap



442,270

people over the age of 16
have had at least one dose

84.9%

of people over the age of 16
have had at least one dose



423,534

people over the age of 16
are fully vaccinated

81.3%

of people over the age of 16 are
fully vaccinated



People aged 12 – 15 years

48,377

42,583

68.3%

At least one dose

60.1%

Fully vaccinated

178 Aboriginal community controlled health services (ACCHS)

0#

50

27

44

12

3

21

21

ACT

NSW

NT

QLD

SA

TAS

VIC

WA

Medicare Address State ^{##}	Individuals Dose 1	Individuals Dose 1 %	Individuals Dose 2	Individuals Dose 2 %
Australian Capital Territory	4,796	91.4%	4,676	89.1%
New South Wales	135,984	87.3%	132,925	85.3%
Northern Territory	41,496	89.6%	39,447	85.2%
Queensland	116,165	81.8%	110,722	77.9%
South Australia	20,003	80.4%	18,598	74.8%
Tasmania	13,954	88.8%	13,545	86.2%
Victoria	35,681	90.4%	34,902	88.4%
Western Australia	53,681	86.6%	49,865	80.5%
Unknown/Other Territories	20,510	69.5%	18,854	63.9%
Totals	442,270	84.9%	423,534	81.3%

Source: Australian Immunisation Register

*Identifying as Aboriginal and Torres Strait Islander is optional and the estimated population may be under reported.

**Includes all Aboriginal and Torres Strait Islander peoples who have received a vaccination, not limited to those administered in an ACCHS setting

#ACCHS in the ACT are currently operating as a Commonwealth Vaccine Clinics so not included to avoid double counting

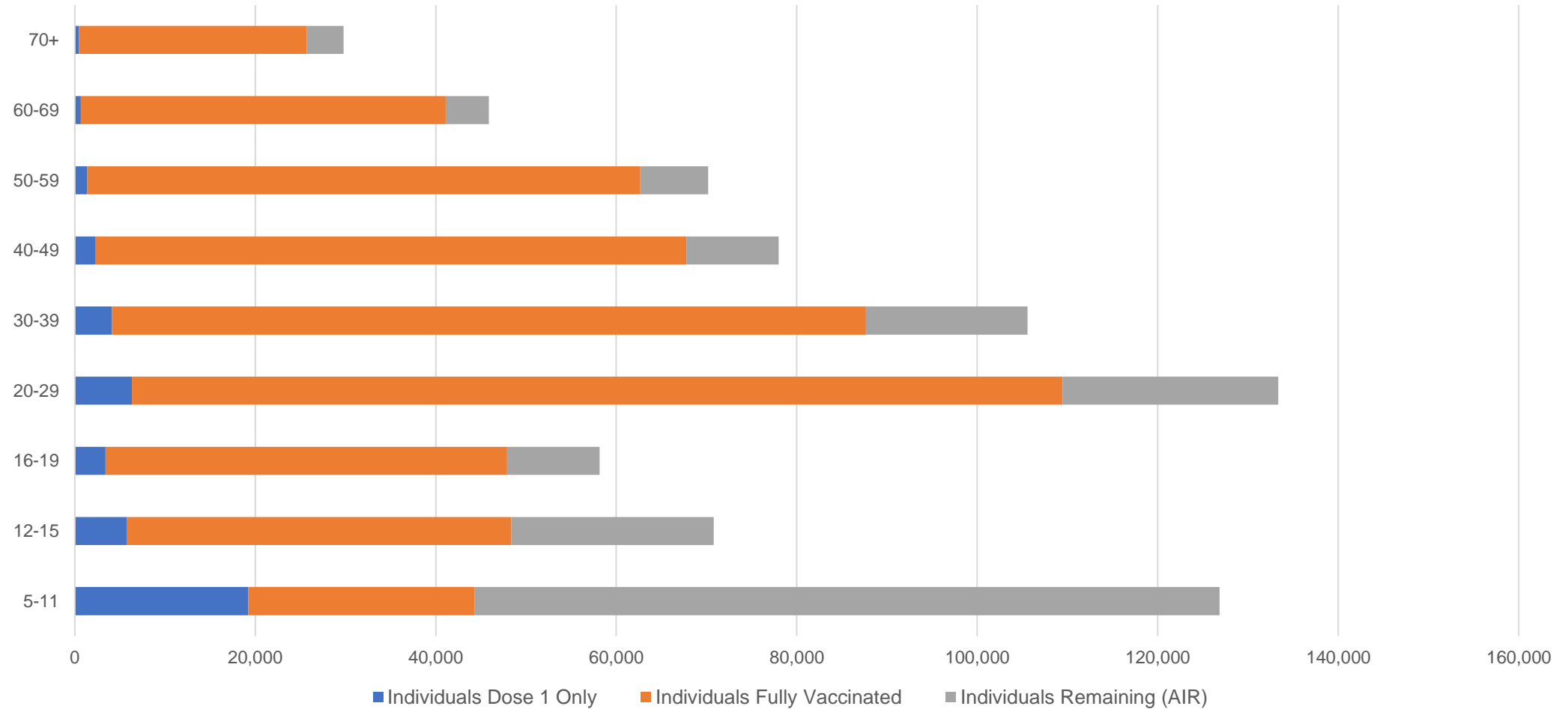
##The above table includes all identified Aboriginal and Torres Strait Islander people who are aged 16 and above by their state of residence.

Aboriginal and Torres Strait Islander peoples

Number of people vaccinated by age

Data as at:
24 May 2022
Updated weekly

Australia's COVID-19
Vaccine Roadmap



Source: Australian Immunisation Register

Commonwealth primary care

Data as at:
29 May 2022

Australia's COVID-19
Vaccine Roadmap



Primary care vaccine administration sites

5,717	128	178	3,597
GPs	CVCs	ACCHS	Pharmacies



36,633,062 total vaccine doses administered
primary care settings as at 29 May
+ 6,321 recorded in the last 24 hours

Primary care vaccinations by provider type

	Doses administered	Daily increase	7 day increase
General Practice* includes other Commonwealth	29,370,334	4,726	210,103
Pharmacy	7,262,728	1,595	79,487

NSW
12,641,368
(+1,453 daily increase)

VIC
9,097,279
(+1,895 daily increase)

QLD
7,046,276
(+1,811 daily increase)

WA
3,855,005
(+774 daily increase)

TAS
691,753
(+27 daily increase)

SA
2,189,408
(+409 daily increase)

ACT
579,125
(+64 daily increase)

NT
217,974
(**<10** daily increase)

314,874

doses administered to persons
residing in other territories or with
missing residential information

*General practice includes Commonwealth Vaccination Clinics, Aboriginal Community Health Centres, Royal Flying Doctor Service and other Commonwealth vaccination facilities

Source: Australian Immunisation Register

Data as at:
29 May 2022

Commonwealth aged care and disability doses administered



1,298,259 (+ 80 last 24 hours)

Total vaccine doses administered in aged care and disability facilities as at 29 May

Number of doses administered as part of the Commonwealth aged and disability care rollout

NSW
565,882
(+24 daily increase)

VIC
244,247
(+32 daily increase)

QLD
206,406
(+24 daily increase)

WA
109,884
(<10 daily increase)

TAS
23,516
(<10 daily increase)

SA
85,032
(<10 daily increase)

ACT
17,677
(<10 daily increase)

NT
7,654
(<10 daily increase)

37,961

doses administered to persons
residing in other territories or with
missing residential information

*Sourced from the Australian Immunisation Register. Includes all persons vaccinated at participating residential aged care, disability and related industry settings.

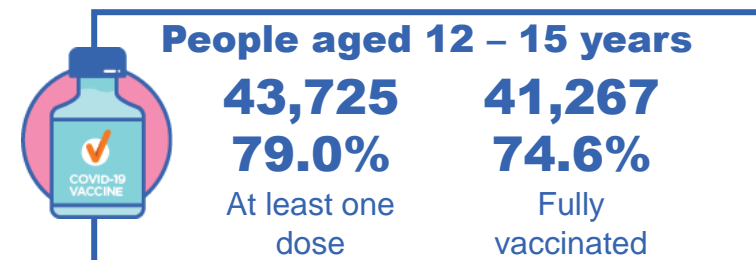
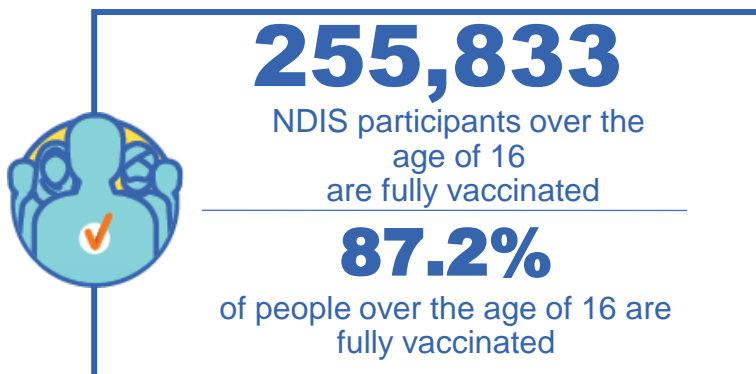
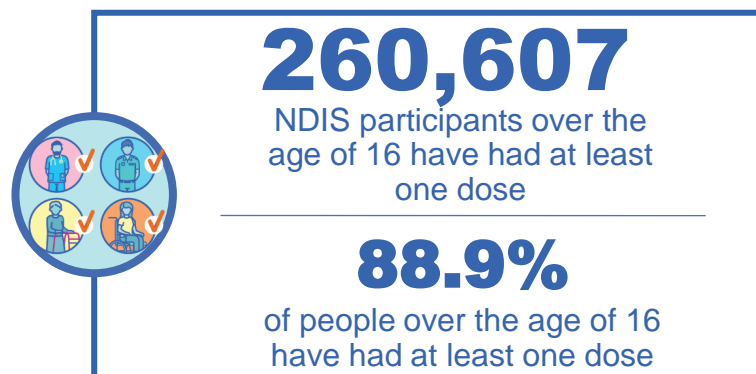
**State level breakdown indicates the residential location and may not align to the state in which the vaccination occurred.

Source: Australian Immunisation Register

National Disability Insurance Scheme (NDIS) reported vaccinations

Data as at:
26 May 2022
Updated weekly

Australia's COVID-19
Vaccine Roadmap



NDIS participant vaccinations

	People aged 16+ with at least one dose	People aged 16+ fully vaccinated	% People aged 16+ with at least one dose	% People aged 16+ fully vaccinated
ACT	4,920	4,852	90.7%	89.5%
NSW	79,886	78,583	89.0%	87.6%
NT	2,258	2,190	79.1%	76.8%
QLD	51,505	50,533	87.5%	85.9%
SA	21,307	20,800	86.9%	84.8%
TAS	6,526	6,373	88.8%	86.7%
VIC	69,309	68,130	90.0%	88.5%
WA	24,896	24,372	90.4%	88.5%
National	260,607	255,833	88.9%	87.2%

Source: Linkage between National Disability Insurance Agency data and the Australian Immunisation Register. Total NDIS participant numbers as at 28 February. Australian Immunisation Register data as at 25 May. Includes all participants regardless of residence type.

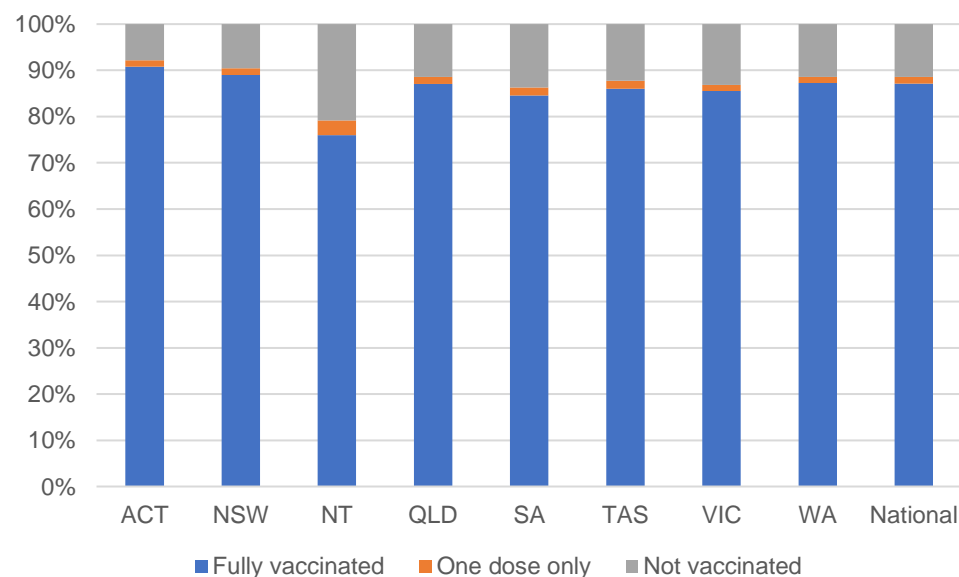
National Disability Insurance Scheme (NDIS) reported vaccinations

Data as at:
26 May 2022
Updated weekly

Australia's COVID-19
Vaccine Roadmap

NATIONAL	Total people with at least one dose	People fully vaccinated	Total number of individuals in cohort	% People with at least one dose	% People fully vaccinated
NDIS participants living in disability accommodation	20,762	20,425	23,352	88.9%	87.5%

NDIS participants in disability and aged care accommodation



Source: Linkage between National Disability Insurance Agency data and the Australian Immunisation Register. Includes participants residing in disability accommodation only.

Source: Total NDIS participant numbers as at 28 February. Participant data as at 24 May. Australian Immunisation Register data as at 25 May. Worker data as at 26 May.

NDIS workforce vaccinations

	NDIS workers with at least one dose	NDIS workers fully vaccinated	% NDIS workers with at least one dose	% NDIS workers fully vaccinated
NSW	126,495	120,487	98.3%	93.6%
VIC	117,331	113,969	98.3%	95.5%
QLD	70,932	69,987	97.7%	96.4%
WA	34,530	33,014	98.8%	94.4%
SA	35,910	33,756	98.6%	92.7%
TAS	10,944	10,696	99.0%	96.8%
ACT	12,301	12,277	99.7%	99.6%
NT	3,854	3,708	99.6%	95.9%
TOTAL	412,297	397,894	98.3%	94.9%

Source: the NDIS Commission has established a requirement for registered NDIS providers who provide intensive disability support services to report on the vaccination status of workers they employ, or otherwise engage, to deliver NDIS-funded supports and services, and who are required to be vaccinated in accordance with in-force state and territory public health orders. The statistics reflect data reported to the NDIS Commission by registered NDIS providers and should be considered indicative and subject to change

Note: Some registered NDIS providers are yet to report on the vaccination status of their workforce. The NDIS Commission is working with those providers around reporting requirements.

Remaining workers not included include those exempt from vaccination requirements, workers whose vaccination status is not yet verified by the provider (such as workers on leave) and provider reporting anomalies.

Residential aged care vaccination rollout

Residential aged care facilities status

176,160

People fully vaccinated

177,559

People with at least one dose

Australia's COVID-19 Vaccine Roadmap

Data as at:
26 May 2022
Updated weekly

Aged care resident vaccinations



Aged care worker vaccinations

Jurisdictions	Total workers with at least one dose	Workers fully vaccinated	% Workers with at least one dose	% Workers fully vaccinated
NSW	77,045	77,037	99.8%	99.8%
VIC	68,568	68,567	98.8%	98.8%
QLD	47,850	47,845	99.5%	99.4%
SA	27,008	26,994	99.2%	99.1%
WA	24,625	24,621	100.0%	100.0%
TAS	7,598	7,596	100.0%	100.0%
NT	882	882	100.0%	100.0%
ACT	2,943	2,943	100.0%	100.0%
Total	256,519	256,485	99.4%	99.4%

Source: My Aged Care Portal vaccination progress

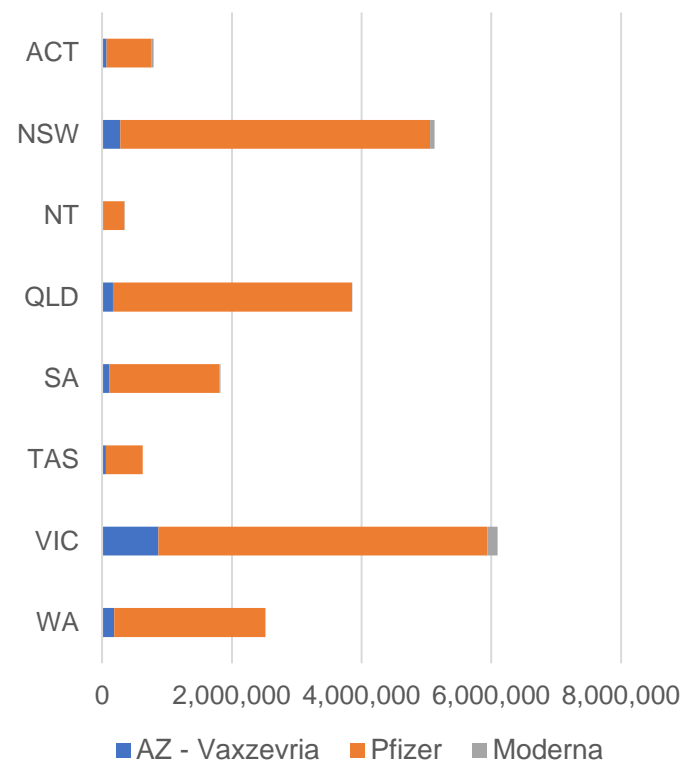
*Status updates are provided by facilities at least once per week. Reporting is updated Monday to Friday to encompass different facility updates being made on different days.

Data is sourced directly from Aged Care Service Providers and is not drawn or closely aligned with data from AIR due to inconsistencies and potential lags in uploading of records.

Data as at:
29 May 2022

Jurisdiction administered

Total vaccine doses administered in State and Territory clinics as at 29 May



21,187,827 total vaccine doses administered
in State and Territory clinics as at 29 May
+ **2,151** recorded in the last 24 hours
+ **37,502** recorded in the last 7 days

NSW
5,126,097
(+384 daily
increase)

VIC
6,101,438
(+518 daily
increase)

QLD
3,851,432
(+71 daily
increase)

WA
2,516,479
(+272 daily
increase)

TAS
624,406
(+101 daily
increase)

SA
1,827,954
(+475 daily
increase)

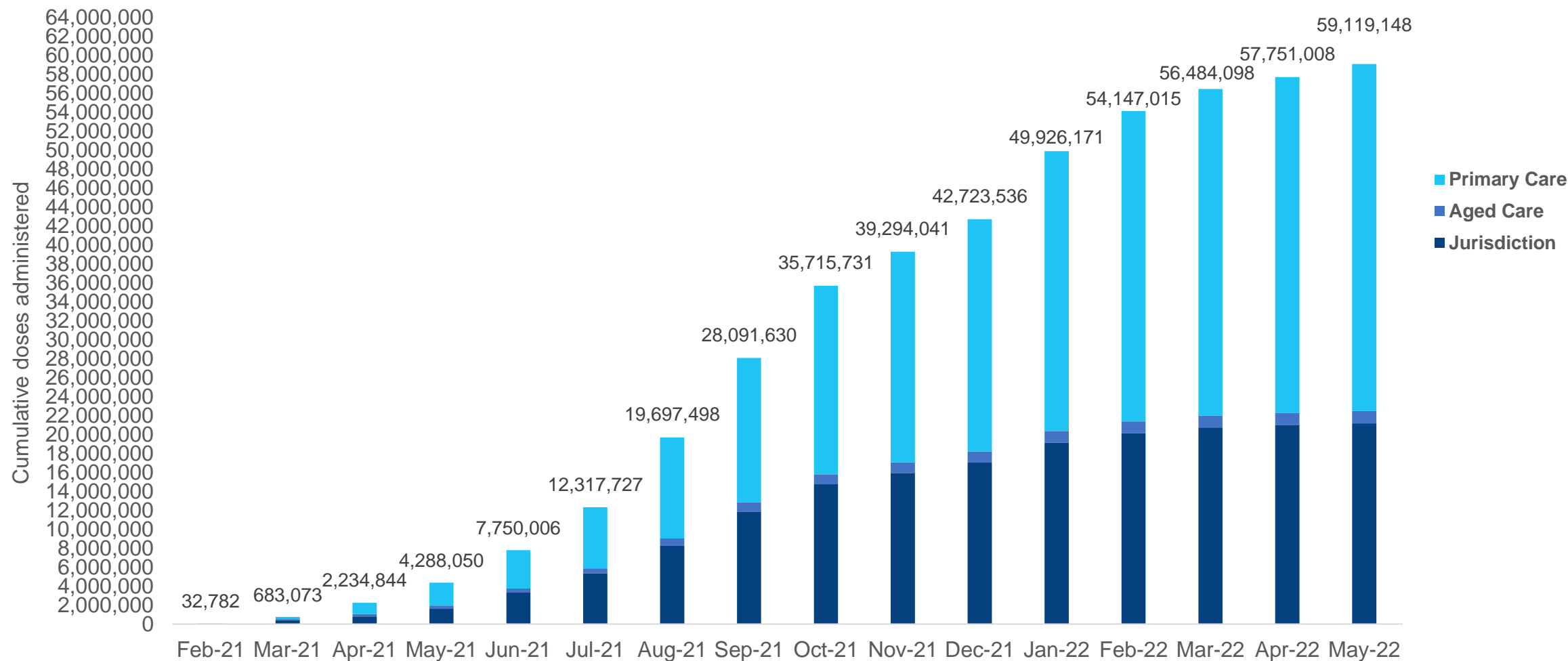
ACT
795,035
(+320 daily
increase)

NT
344,986
(+10 daily
increase)

*Sourced from the Australian Immunisation Register. Numbers are calculated as difference in daily cumulative reported numbers to allow for historical corrections.

Cumulative doses administered by channel

Data as at:
29 May 2022



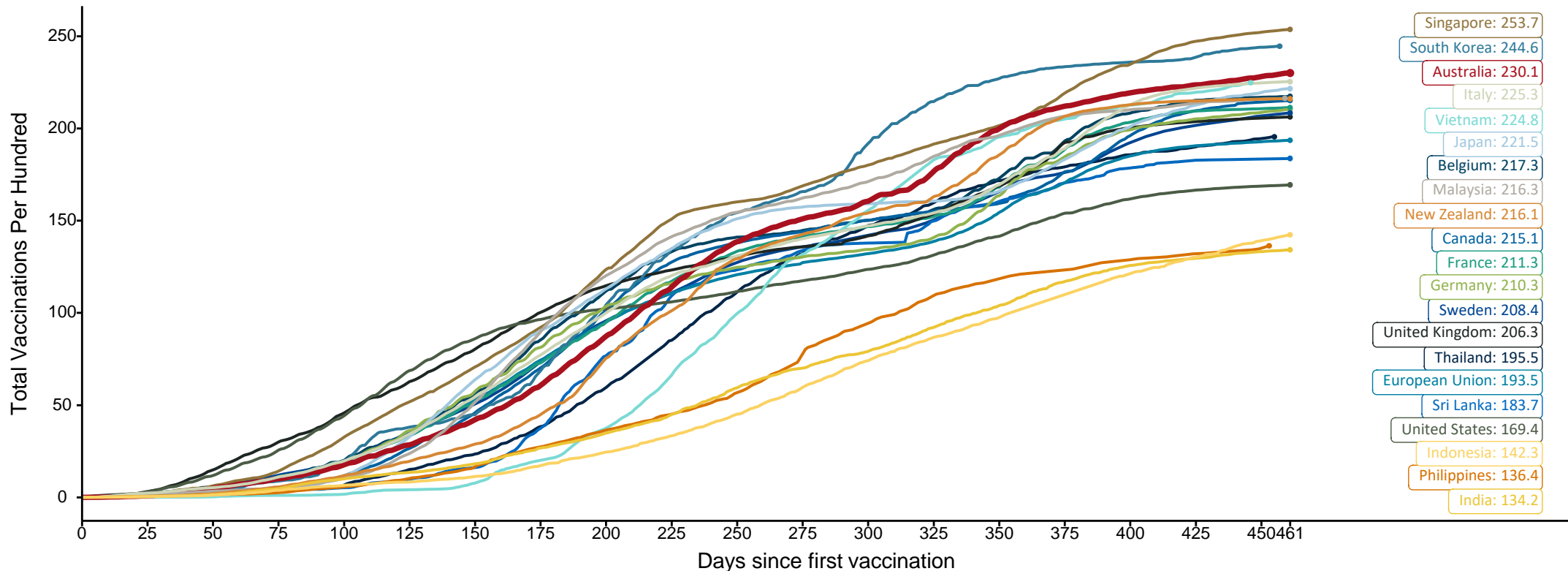
Source: Australian Immunisation Register

Doses at equivalent stages of rollout (Day 461)

Data as at:
29 May 2022
Updated weekly

The x-axis is truncated at the length of Australia's vaccination program. Countries with intermittent reporting have had their doses per 100 imputed to Australia's current stage of rollout. Israel excluded as it is beyond scale of the graph

Cumulative doses administered (29 May): **59,119,148**

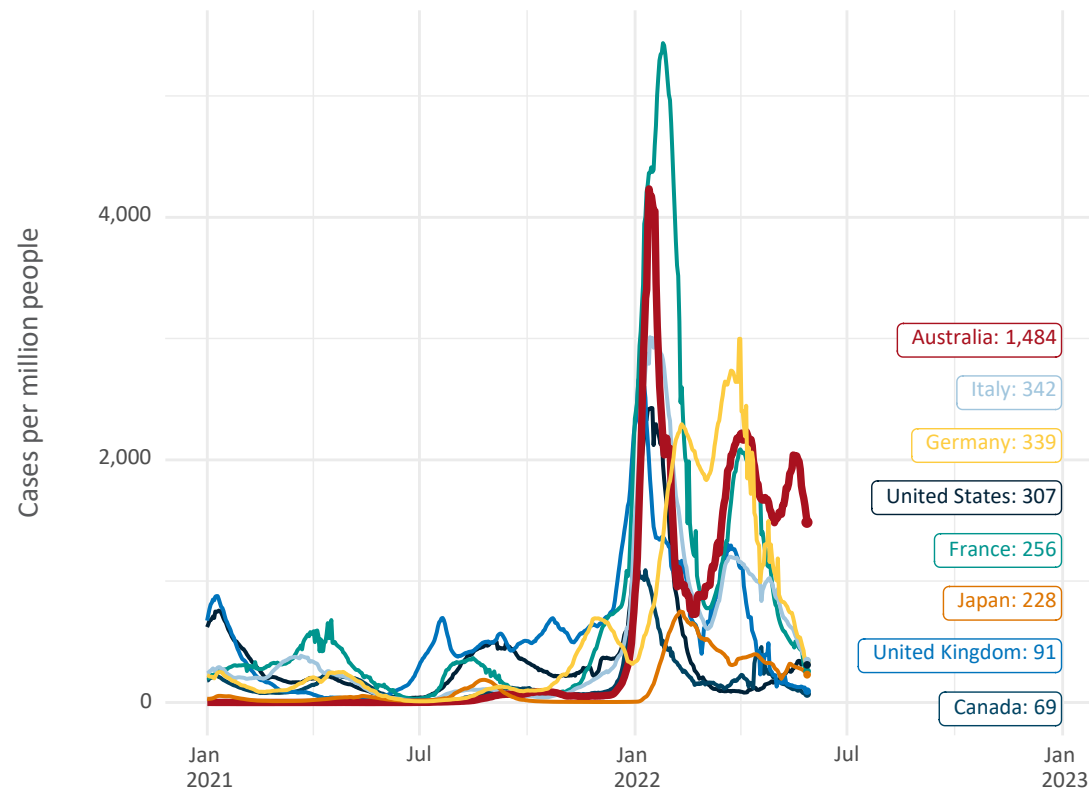


Note: From 11 January 2022, data for Australia includes all doses administered to people 5 and over. Prior to 11 January, data was for 12 and over.
Source: Department of Health (Australia), Our World in Data (international)
Latest data: 29 May

International data – COVID-19

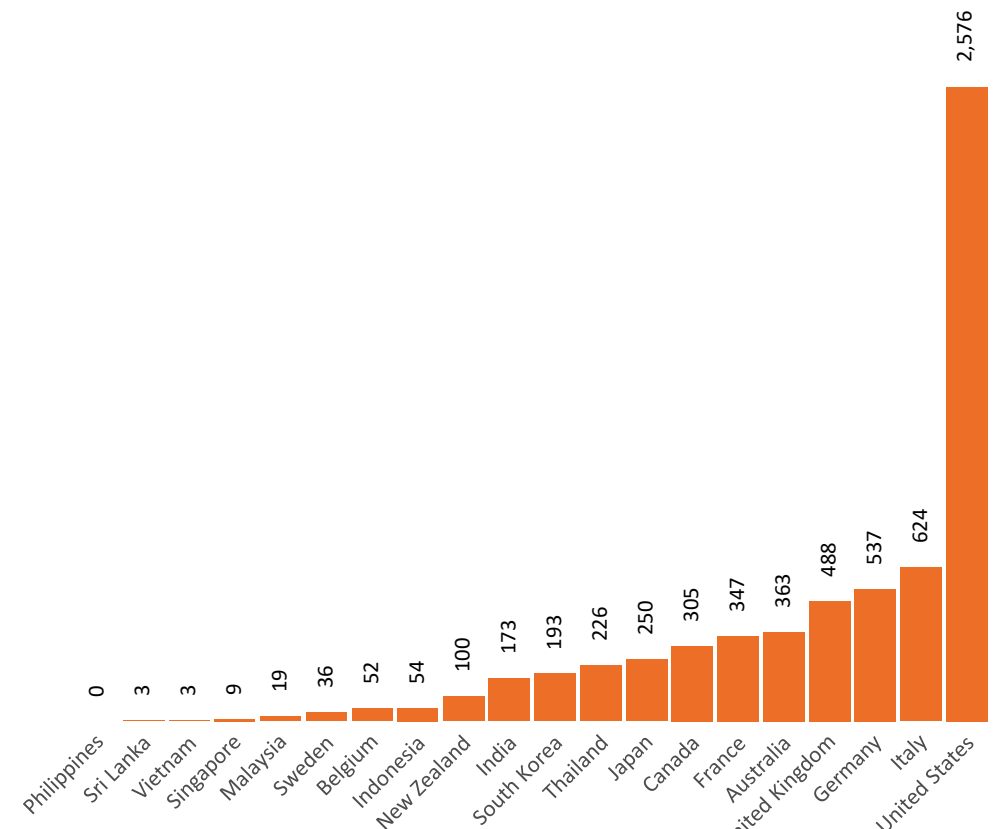
Data as at:
29 May 2022
Updated weekly

New daily cases per million since 2021, Australia and G7 countries
Smoothed - 7 day average



Source: OWID
Data downloaded: 30 May 2022 10:42
Latest data: 28 May 2022

COVID-19 deaths in past 7 days - Australia and select countries



Source: OWID
Data downloaded: 30 May 2022 10:42
Latest data: 28 May 2022

Administration and Utilisation

Doses as at 29 May 2022

	Ordered	Available	Administered	Stock on Hand at Sites	Estimated Dose Utilisation %
	Up to 29/05/22	Delivered up to 22/05/22 including redistributions	Up to 29/05/22		(see note)
NSW	6,112,272	6,112,272	5,108,137	392,908	94%
VIC	7,000,654	6,999,554	6,097,878	264,424	97%
QLD	4,847,202	4,805,542	3,818,543	506,582	89%
WA	2,675,058	2,672,478	2,543,384	58,004	Fully utilised
SA	2,151,520	2,122,520	1,827,954	101,923	96%
TAS	656,390	656,290	624,406	1,699	Fully utilised
NT	422,444	408,846	371,535	16,876	Fully utilised
ACT	651,486	651,486	795,990	7,211	Fully utilised
Jurisdiction delivered total	24,517,026	24,428,988	21,187,827	1,349,626	97%
Commonwealth Vaccination Providers	1,418,810	1,408,058	1,298,259	7,450	Fully utilised
Commonwealth Primary Care & Other	56,894,506	56,307,528	36,633,062	14,090,050	75%
Total	82,830,342	82,144,574	59,119,148	15,447,126	82%

About this data

- Ordered – Total doses delivered or in transit to sites. Based on logistics provider data. This figure includes doses allocated for administration in the coming week.
- Available – total doses that could have been administered to date, less doses re-distributed from States & Territories to Primary Care or Commonwealth Vaccination Providers (i.e., does not include those deliveries recently received, and intended for use in the coming week).
- Administered – Doses administered as at 29 May 2022.
- Stock on Hand at Sites – Available doses minus Administered doses and a small % wastage.
- The dose utilisation is calculated based on the total doses administered and a small % wastage in line with international standards in relation to total available doses.
- For Commonwealth Vaccination Providers, the doses available for administration is for the full period (up to 29 May 2022).
- Commonwealth Vaccination Providers utilisation is not provided as the in-reach rollout is demand-based.