



Australian Government
Operation COVID Shield

COVID-19 Vaccine Roll-out

03 May 2022

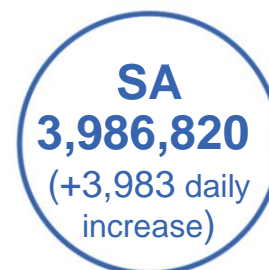
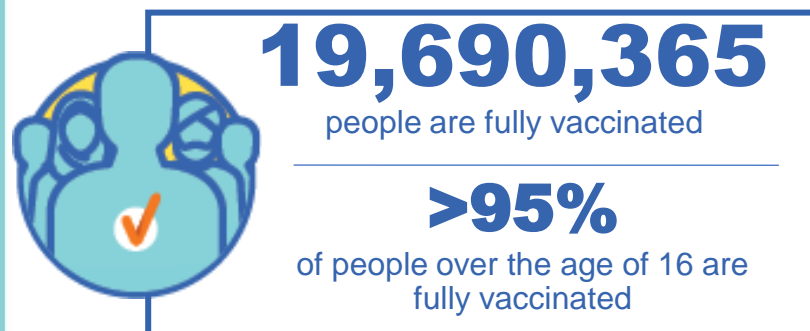
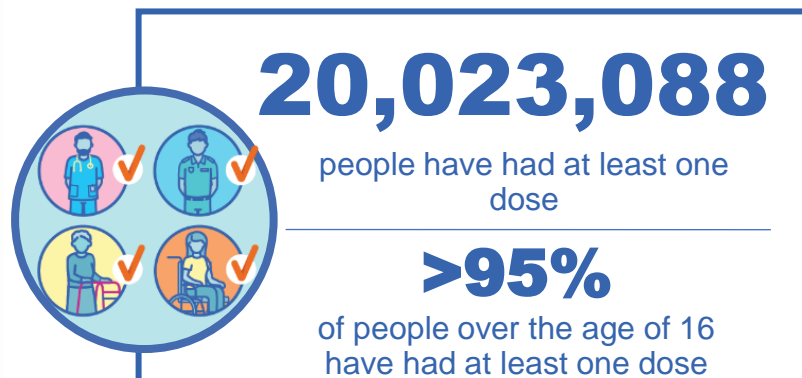
Data as at:
02 May 2022

Total vaccine doses



57,803,355 total vaccine
doses administered nationally as at 02 May

+43,532 recorded in the last 24 hours



*Administration state breakdown indicates state in which a vaccine was administered

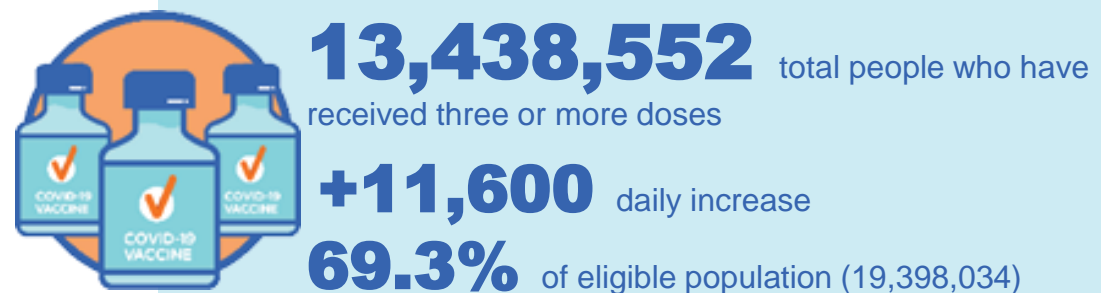
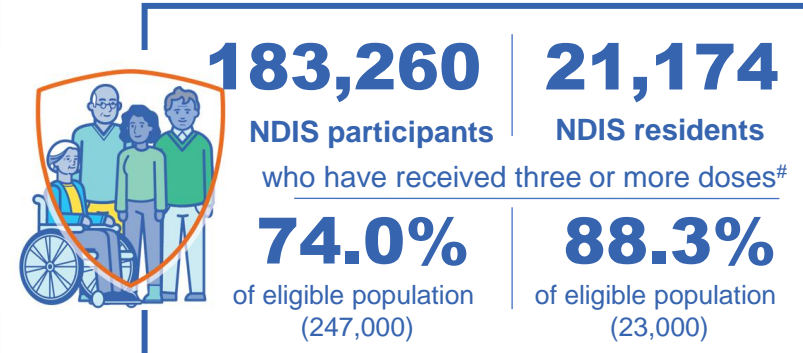
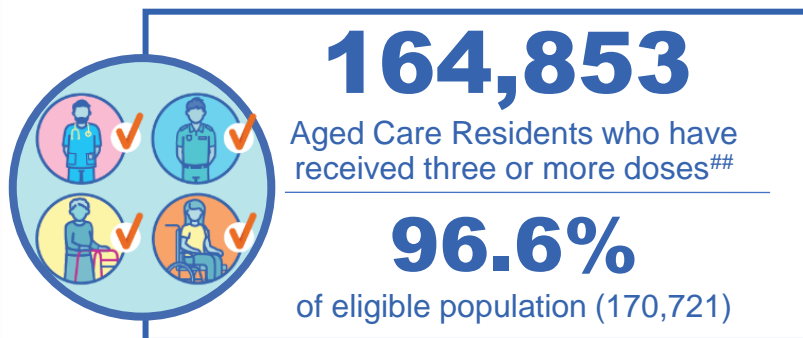
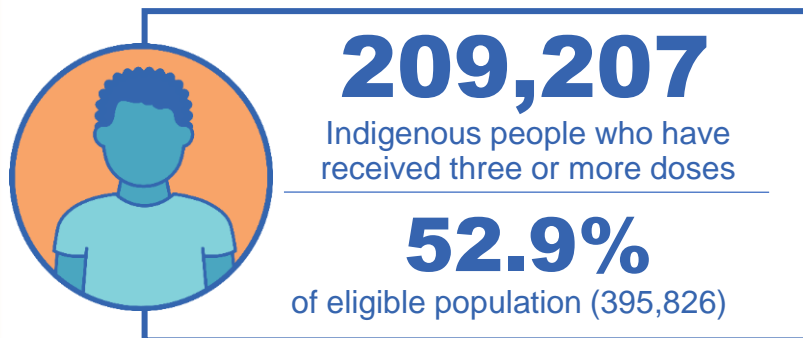
**Overall dose count includes instances of more than three doses per person in a small number of cases.

Source: Australian Immunisation Register

Booster Vaccinations

Australia's COVID-19
Vaccine Roadmap

Data as at:
02 May 2022



	Number of People	Daily Increase	% of Eligible
NSW	4,106,265	4,064	66.3%
VIC	3,599,072	2,945	71.3%
QLD	2,325,081	311	62.6%
WA	1,644,027	2,755	84.1%
SA	951,984	939	72.5%
TAS	306,882	374	72.0%
ACT	266,528	185	77.2%
NT	125,173	28	75.6%

*People may belong to multiple groups and could be represented in the above breakdowns multiple times.
NDIS participants data as at 1 May 2022. ## Aged Care Residents data as at 2 May 2022.

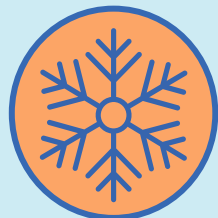
Source: Australian Immunisation Register

113,540 doses administered to persons
residing in other territories or with
missing residential information

Winter / Fourth Doses

Data as at:
01 May 2022
Updated weekly

Australia's COVID-19
Vaccine Roadmap



500,924 total people (16+) who have received four or more doses

+155,095 weekly increase

	Number of People 16+	Weekly Increase
ACT	13,392	3,455
NSW	170,986	49,550
NT	2,973	656
QLD	96,536	31,058
SA	35,285	11,715
TAS	14,020	4,807
VIC	125,651	39,760
WA	39,626	13,349

2,455 doses administered to persons
residing in other territories or with
missing residential information

Source: Australian Immunisation Register

Vaccinations by residential location

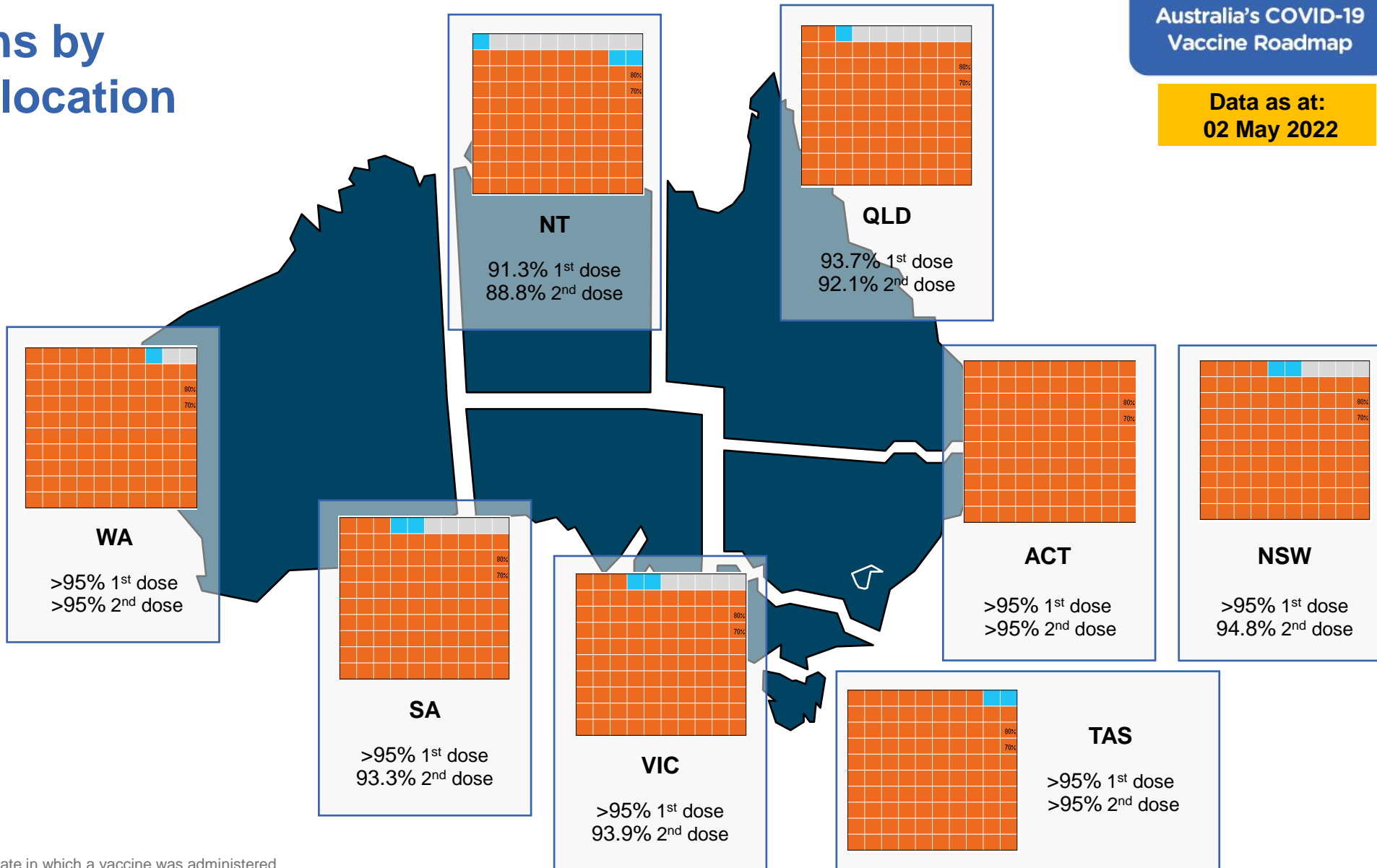
Data as at:
02 May 2022

First doses

Age	Today	4 weeks ago	8 weeks ago
16+	>95%	>95%	>95%
50+	>95%	>95%	>95%
70+	>95%	>95%	>95%

Fully vaccinated

Age	Today	4 weeks ago	8 weeks ago
16+	>95%	>95%	94.9%
50+	>95%	>95%	>95%
70+	>95%	>95%	>95%



*Residential state may differ from the state in which a vaccine was administered

Commonwealth and Jurisdiction vaccine doses administered

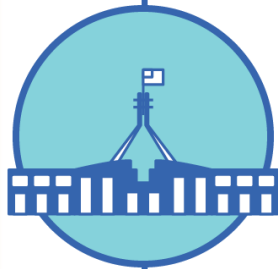
Data as at:
02 May 2022



57,803,355 total vaccine
doses administered nationally as at 02 May
+ 43,532 recorded in the last 24 hours



21,034,797
doses administered by state
and territory facilities
+ 6,062
recorded in the last 24 hours



36,768,558
doses administered by
commonwealth facilities
+ 37,470
recorded in the last 24 hours

35,492,684 total vaccine doses
administered in primary care settings
1,275,874 total vaccine doses
administered in aged care and disability
settings

NSW	Jurisdictions	Commonwealth
Cumulative	5,102,190	12,832,553
Daily increase	1,766	15,275

VIC	Jurisdictions	Commonwealth
Cumulative	6,060,869	9,144,664
Daily increase	1,391	10,904

QLD	Jurisdictions	Commonwealth
Cumulative	3,837,982	7,094,937
Daily increase	14	470

WA	Jurisdictions	Commonwealth
Cumulative	2,492,591	3,862,864
Daily increase	1,315	5,413

TAS	Jurisdictions	Commonwealth
Cumulative	620,016	683,233
Daily increase	75	1,406

SA	Jurisdictions	Commonwealth
Cumulative	1,802,581	2,184,239
Daily increase	816	3,167

ACT	Jurisdictions	Commonwealth
Cumulative	778,258	729,604
Daily increase	681	798

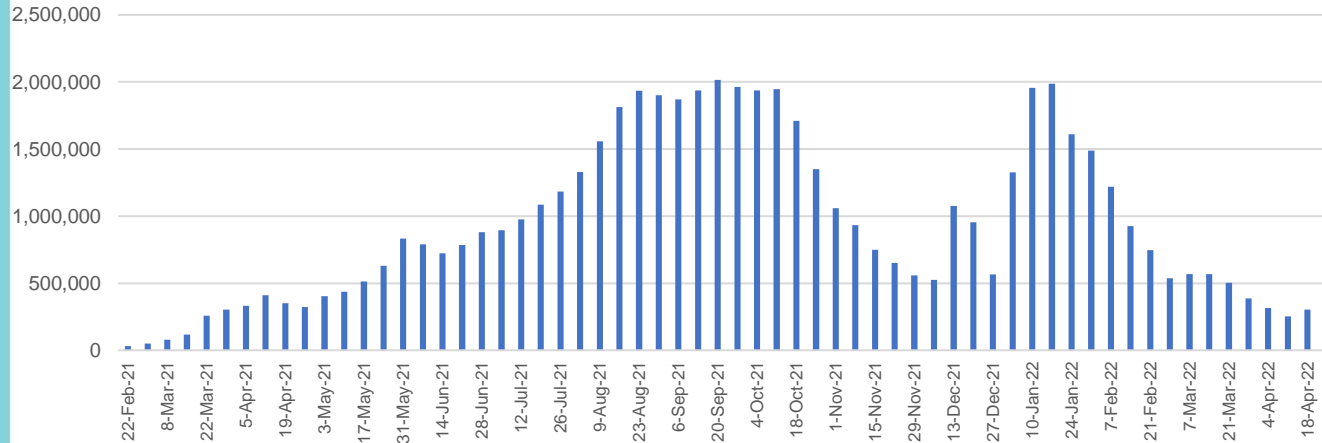
NT	Jurisdictions	Commonwealth
Cumulative	340,310	236,464
Daily increase	<10	37

Vaccine milestone charts

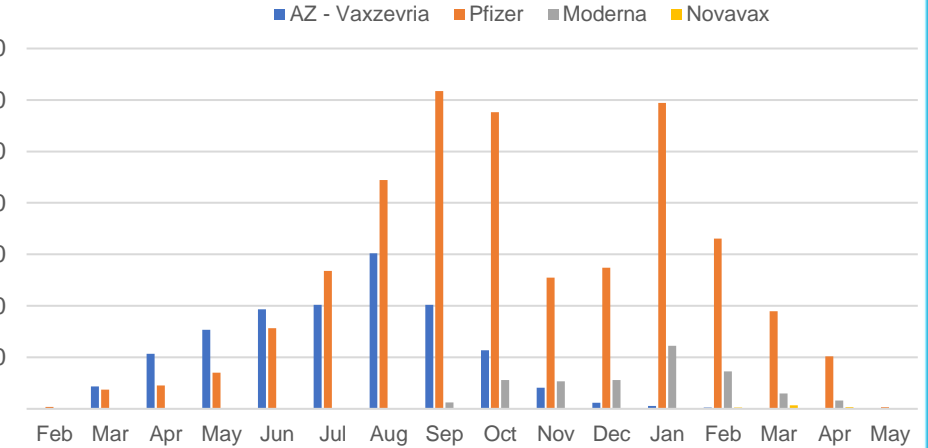
Data as at:
02 May 2022

Australia's COVID-19
Vaccine Roadmap

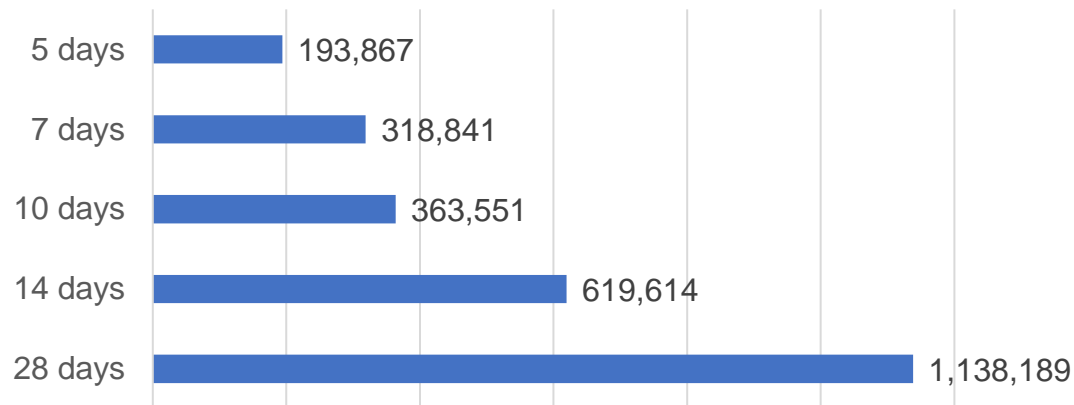
Doses Administered by Week



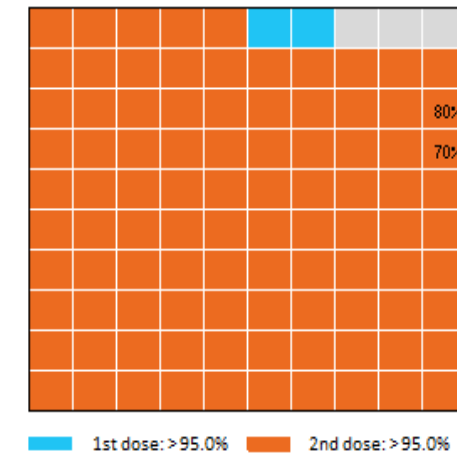
Doses by administration month and vaccine type



Doses Reported



Eligible population percentage coverage



*Each square represents 1% of the national population.
Squares are filled as milestones are achieved.

*Sourced from the Australian Immunisation Register.

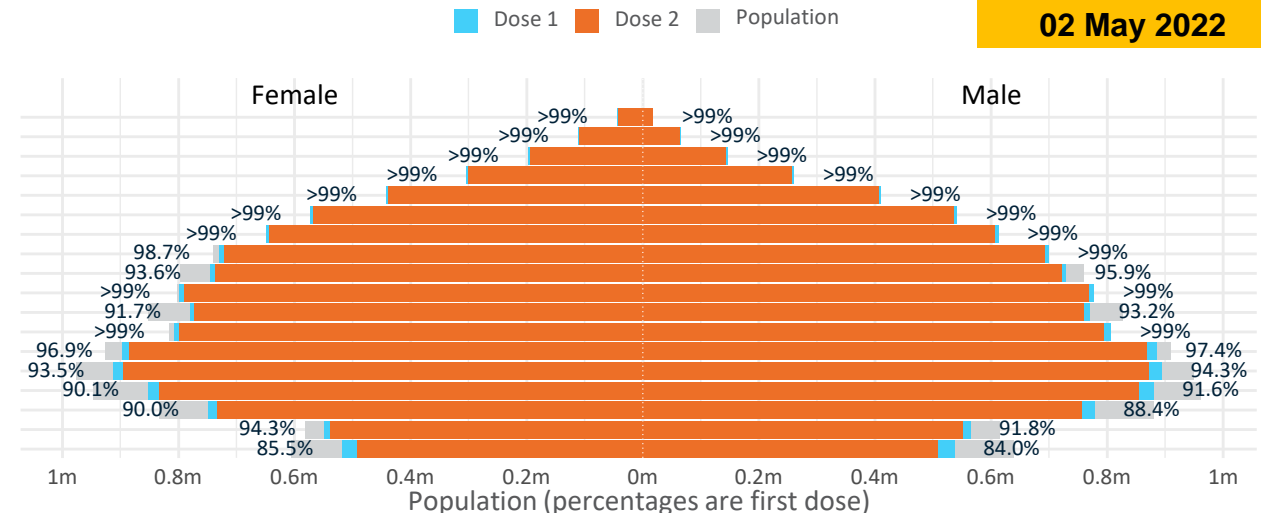
Data as at:
02 May 2022

Doses by age and sex

First and second doses by age and sex

	16+	50+	12-15	5-11
Dose 1	97.11% (20,023,088 doses / 20,619,959 people)	>99% (8,863,820 doses / 8,749,703 people)	84.78% (1,054,714 doses / 1,243,990 people)	52.84% (1,202,961 doses / 2,276,638 people)
Dose 2	95.49% (19,690,365 doses / 20,619,959 people)	>99% (8,757,381 doses / 8,749,703 people)	80.39% (1,000,018 doses / 1,243,990 people)	37.03% (842,957 doses / 2,276,638 people)

Age	Dose 1	Dose 2
95+	62,233 (>99%)	58,849 (>99%)
90-94	177,595 (>99%)	171,968 (>99%)
85-89	344,523 (>99%)	337,532 (>99%)
80-84	564,590 (>99%)	557,302 (>99%)
75-79	853,157 (>99%)	844,774 (>99%)
70-74	1,114,714 (>99%)	1,103,738 (>99%)
65-69	1,263,882 (>99%)	1,249,687 (>99%)
60-64	1,430,781 (>99%)	1,414,649 (98.5%)
55-59	1,475,491 (94.8%)	1,459,029 (93.8%)
50-54	1,576,854 (>99%)	1,559,853 (>99%)
45-49	1,551,525 (92.5%)	1,532,939 (91.4%)
40-44	1,617,266 (>99%)	1,593,181 (98.3%)
35-39	1,787,700 (97.4%)	1,755,738 (95.7%)
30-34	1,814,292 (94.3%)	1,772,862 (92.2%)
25-29	1,742,533 (91.4%)	1,695,360 (88.9%)
20-24	1,533,137 (89.5%)	1,494,016 (87.3%)
16-19	1,112,815 (93.1%)	1,088,888 (91.1%)
12-15	1,054,714 (84.8%)	1,000,018 (80.4%)

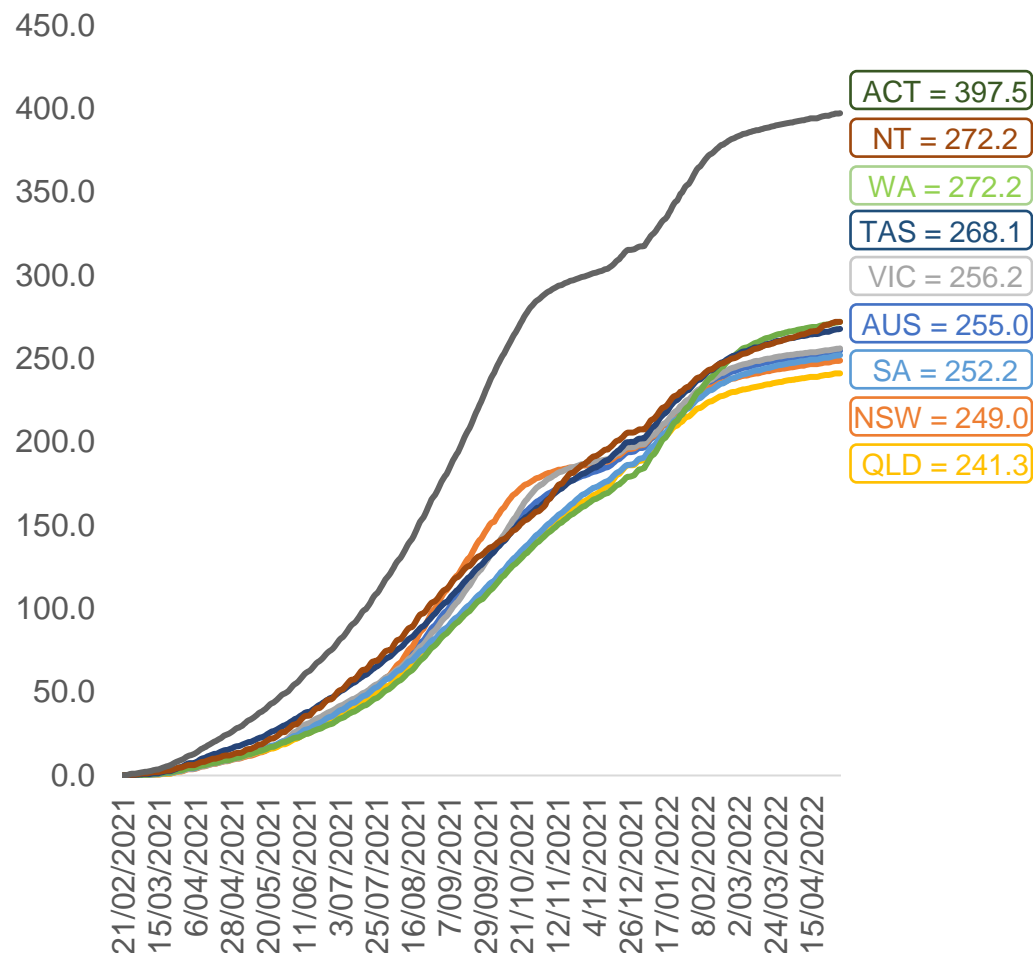


	AUS	ACT	NSW	NT	QLD	SA	TAS	VIC	WA
16 and over - dose 1	20,023,088	352,151	6,317,735	173,913	3,852,775	1,372,765	444,326	5,152,311	2,091,405
16 and over - dose 2	19,690,365	346,634	6,222,348	169,141	3,788,652	1,343,194	435,170	5,076,067	2,059,810
16 and over - population	20,619,959*	344,037	6,565,651	190,571	4,112,707	1,440,400	440,172	5,407,574	2,114,978
16 and over % with dose 1	97.11%	>99%	96.22%	91.26%	93.68%	95.30%	>99%	95.28%	98.89%
16 and over % with dose 2	95.49%	>99%	94.77%	88.75%	92.12%	93.25%	98.86%	93.87%	97.39%
5 to 11 - dose 1	1,202,961	31,968	358,577	13,241	209,233	84,405	28,807	327,157	141,667
5 to 11 - dose 2	842,957	26,134	254,505	7,961	142,415	59,995	22,625	231,053	93,954
5 to 11 - population	2,276,638	39,789	716,460	24,750	478,731	148,816	45,033	578,499	244,154
5 to 11 % with dose 1	52.84%	80.34%	50.05%	53.50%	43.71%	56.72%	63.97%	56.55%	58.02%
5 to 11 % with dose 2	37.03%	65.68%	35.52%	32.17%	29.75%	40.31%	50.24%	39.94%	38.48%
12 to 15 - dose 1	1,054,714	20,106	324,480	10,861	206,852	68,433	22,934	275,543	115,849
12 to 15 - dose 2	1,000,018	19,564	310,287	9,793	193,896	64,850	21,852	263,983	107,365
12 to 15 - population	1,243,990	19,693	390,330	13,060	270,146	82,747	26,308	308,611	132,869
12 to 15 % with dose 1	84.78%	>99%	83.13%	83.16%	76.57%	82.70%	87.18%	89.28%	87.19%
12 to 15 % with dose 2	80.39%	>99%	79.49%	74.98%	71.77%	78.37%	83.06%	85.54%	80.81%

*National population will not equal sum of listed jurisdictions due to a small number of people counted in national population residing in some 'other' territories. Sum of state doses will not add to national total as some records are unable to be geocoded to a State or Territory.
Doses sourced from Australian Immunisation Register, population from ABS ERP June 2020

Vaccinations by location

Cumulative total doses administered vs eligible state populations*

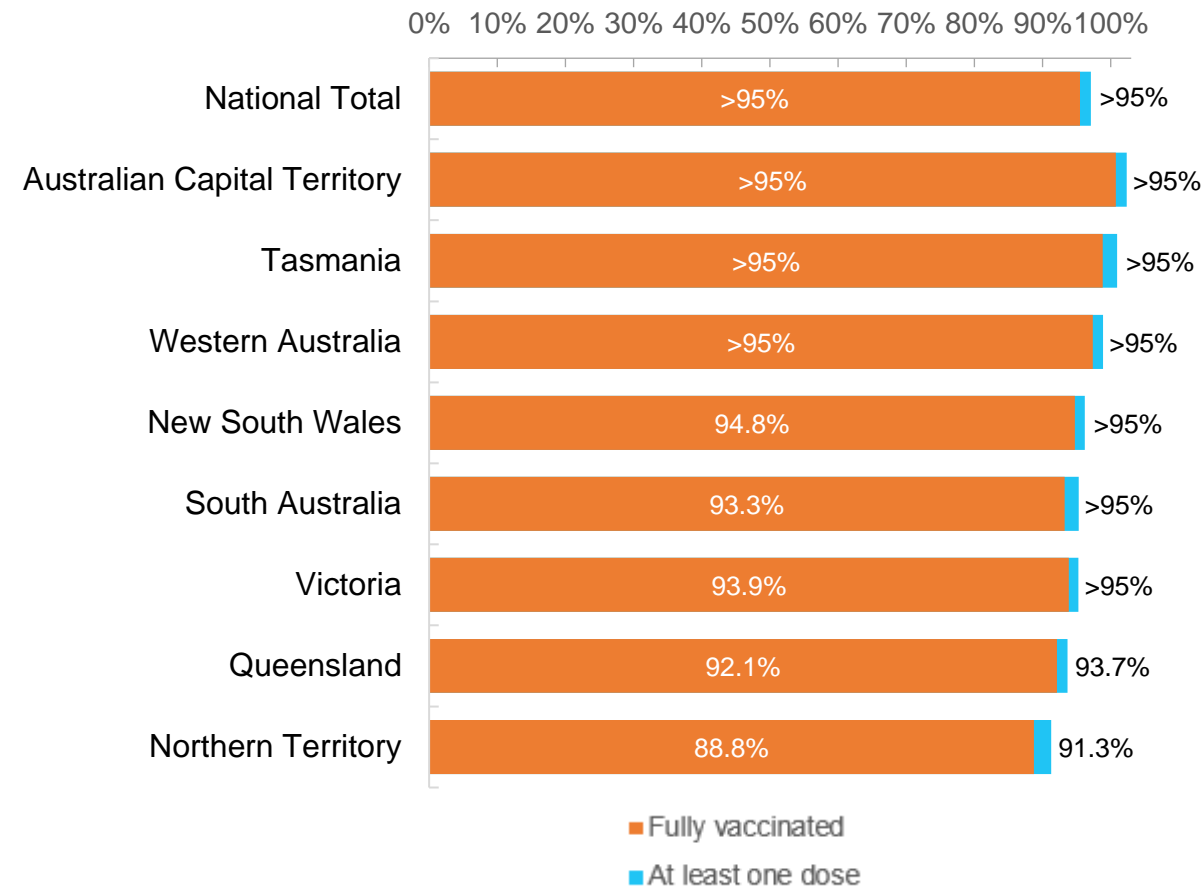


*Not an indication of percentage vaccinated, numbers will exceed 100 due to multiple doses required per person of the population. All doses are included for those aged 12 and above, and are based on vaccination provider location.

Data as at:
02 May 2022

Australia's COVID-19
Vaccine Roadmap

First and Second Doses by residential location



Aboriginal and Torres Strait Islander peoples

Number of people vaccinated

Data as at:
26 Apr 2022
Updated weekly

Australia's COVID-19
Vaccine Roadmap



438,702

people over the age of 16
have had at least one dose

84.4%

of people over the age of 16
have had at least one dose



419,101

people over the age of 16
are fully vaccinated

80.7%

of people over the age of 16 are
fully vaccinated



People aged 12 – 15 years

48,565

42,691

68.4%

At least one dose

60.1%

Fully vaccinated

178 Aboriginal community controlled health services (ACCHS)

0#

50

27

44

12

3

21

21

ACT

NSW

NT

QLD

SA

TAS

VIC

WA

Medicare Address State ^{##}	Individuals Dose 1	Individuals Dose 1 %	Individuals Dose 2	Individuals Dose 2 %
Australian Capital Territory	4,792	90.9%	4,673	88.7%
New South Wales	134,640	86.7%	131,513	84.7%
Northern Territory	41,630	89.5%	39,417	84.7%
Queensland	115,367	81.3%	109,778	77.4%
South Australia	19,850	80.0%	18,390	74.1%
Tasmania	13,868	88.5%	13,457	85.9%
Victoria	35,361	89.8%	34,565	87.8%
Western Australia	53,497	86.1%	49,322	79.4%
Unknown/Other Territories	19,697	68.5%	17,986	62.6%
Totals	438,702	84.4%	419,101	80.7%

Source: Australian Immunisation Register

*Identifying as Aboriginal and Torres Strait Islander is optional and the estimated population may be under reported.

**Includes all Aboriginal and Torres Strait Islander peoples who have received a vaccination, not limited to those administered in an ACCHS setting

#ACCHS in the ACT are currently operating as a Commonwealth Vaccine Clinics so not included to avoid double counting

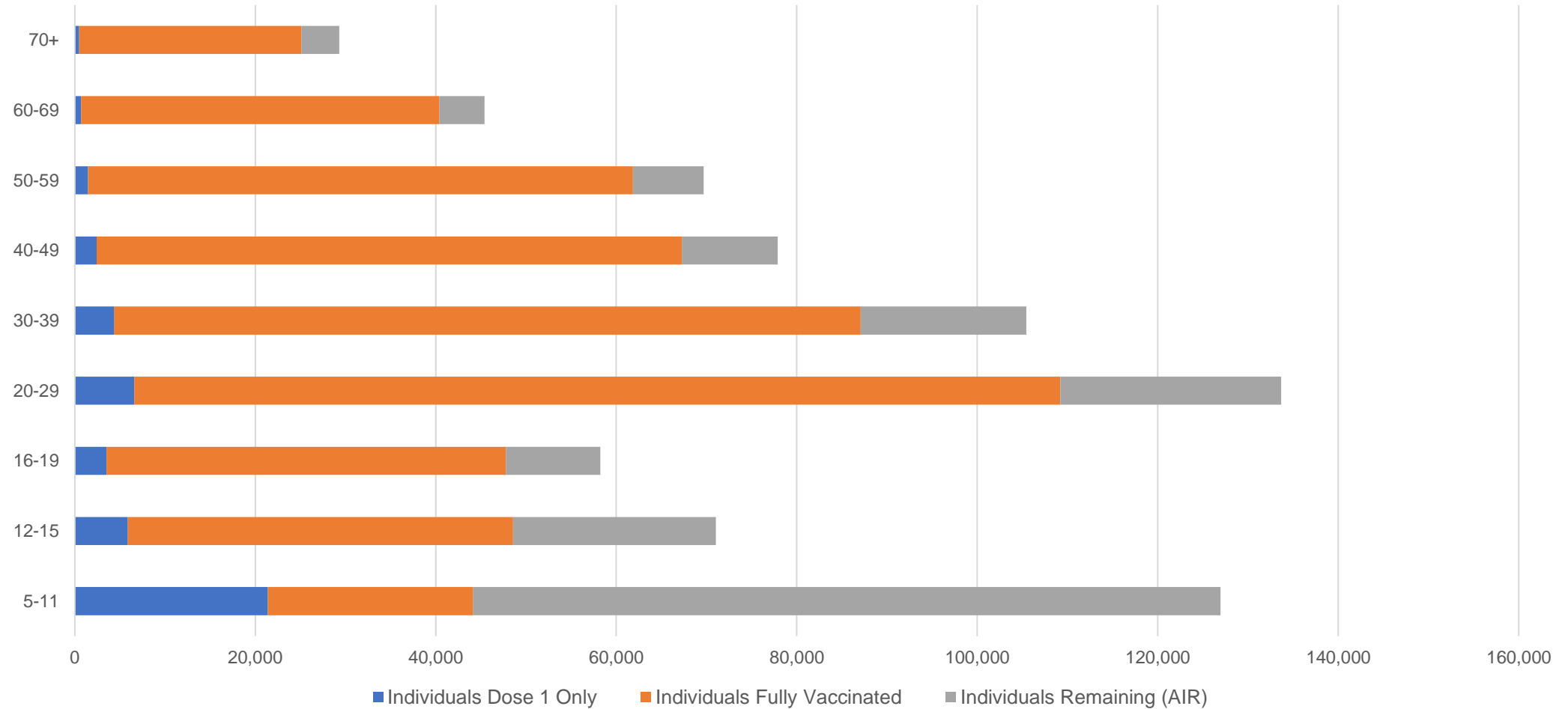
##The above table includes all identified Aboriginal and Torres Strait Islander people who are aged 16 and above by their state of residence.

Aboriginal and Torres Strait Islander peoples

Number of people vaccinated by age

Data as at:
26 Apr 2022
Updated weekly

Australia's COVID-19
Vaccine Roadmap



Source: Australian Immunisation Register

Commonwealth primary care

Data as at:
02 May 2022

Australia's COVID-19
Vaccine Roadmap



Primary care vaccine administration sites

5,803	128	178	3,599
GPs	CVCs	ACCHS	Pharmacies



35,492,684 total vaccine doses administered
primary care settings as at 02 May
+ 37,190 recorded in the last 24 hours

Primary care vaccinations by provider type

	Doses administered	Daily increase	7 day increase
General Practice* includes other Commonwealth	28,552,728	24,930	184,381
Pharmacy	6,939,956	12,260	80,538

NSW
12,274,583
(+15,078 daily increase)

VIC
8,827,306
(+10,904 daily increase)

QLD
6,815,851
(+572 daily increase)

WA
3,727,938
(+5,487 daily increase)

TAS
662,162
(+1,407 daily increase)

SA
2,104,565
(+3,183 daily increase)

ACT
559,311
(+800 daily increase)

NT
213,058
(+35 daily increase)

307,910

doses administered to persons
residing in other territories or with
missing residential information

*General practice includes Commonwealth Vaccination Clinics, Aboriginal Community Health Centres, Royal Flying Doctor Service and other Commonwealth vaccination facilities

Source: Australian Immunisation Register

Data as at:
02 May 2022

Commonwealth aged care and disability doses administered



1,275,874 (+ 280 last 24 hours)

Total vaccine doses administered in aged care and disability facilities as at 02 May

Number of doses administered as part of the Commonwealth aged and disability care rollout

NSW
559,769
(+121 daily increase)

VIC
236,326
(<10 daily increase)

QLD
203,172
(+79 daily increase)

WA
108,293
(+45 daily increase)

TAS
23,098
(+30 daily increase)

SA
84,081
(<10 daily increase)

ACT
17,152
(<10 daily increase)

NT
7,525
(<10 daily increase)

36,458

doses administered to persons
residing in other territories or with
missing residential information

*Sourced from the Australian Immunisation Register. Includes all persons vaccinated at participating residential aged care, disability and related industry settings.

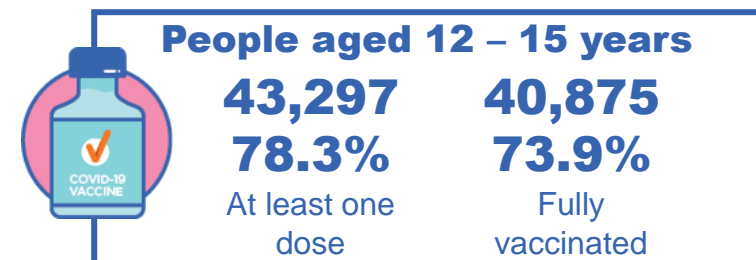
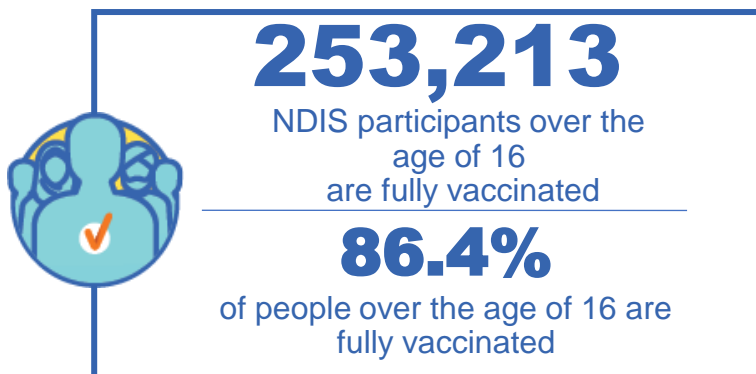
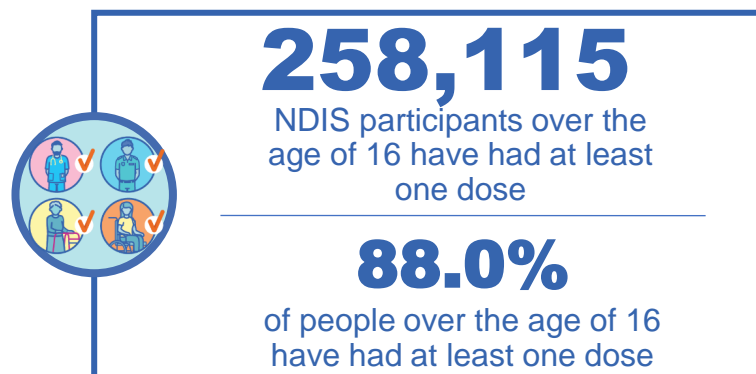
**State level breakdown indicates the residential location and may not align to the state in which the vaccination occurred.

Source: Australian Immunisation Register

National Disability Insurance Scheme (NDIS) reported vaccinations

Data as at:
28 April 2022
Updated weekly

Australia's COVID-19
Vaccine Roadmap



NDIS participant vaccinations

	People aged 16+ with at least one dose	People aged 16+ fully vaccinated	% People aged 16+ with at least one dose	% People aged 16+ fully vaccinated
ACT	4,872	4,807	89.8%	88.6%
NSW	79,259	77,947	88.3%	86.9%
NT	2,231	2,161	78.2%	75.7%
QLD	50,903	49,915	86.5%	84.8%
SA	21,060	20,533	85.8%	83.7%
TAS	6,462	6,307	87.9%	85.8%
VIC	68,696	67,473	89.2%	87.6%
WA	24,632	24,070	89.5%	87.4%
National	258,115	253,213	88.0%	86.4%

Source: Linkage between National Disability Insurance Agency data and the Australian Immunisation Register. Total NDIS participant numbers as at 28 February. Australian Immunisation Register data as at 27 April. Includes all participants regardless of residence type.

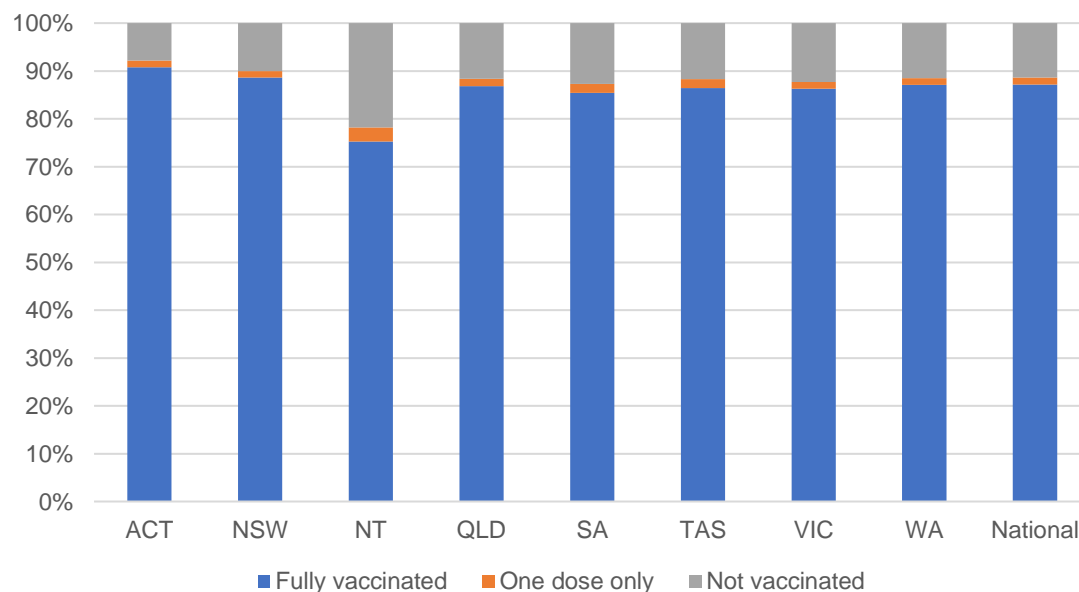
National Disability Insurance Scheme (NDIS) reported vaccinations

Data as at:
28 April 2022
Updated Weekly

Australia's COVID-19
Vaccine Roadmap

NATIONAL	Total people with at least one dose	People fully vaccinated	Total number of individuals in cohort	% People with at least one dose	% People fully vaccinated
NDIS participants living in disability accommodation	20,760	20,423	23,352	88.9%	87.5%

NDIS participants in disability and aged care accommodation



Source: Linkage between National Disability Insurance Agency data and the Australian Immunisation Register. Includes participants residing in disability accommodation only.
Source: Total NDIS participant numbers as at 28 February. Participant data as at 27 April. Australian Immunisation Register data as at 27 April. Worker data as at 28 April.

NDIS workforce vaccinations

	NDIS workers with at least one dose	NDIS workers fully vaccinated	% NDIS workers with at least one dose	% NDIS workers fully vaccinated
NSW	121,663	117,932	98.2%	95.2%
VIC	116,682	112,949	98.4%	95.2%
QLD	69,644	68,794	97.5%	96.3%
WA	32,930	31,241	98.6%	93.6%
SA	35,456	32,934	98.5%	91.5%
TAS	10,720	10,503	99.6%	97.6%
ACT	3,510	3,462	99.0%	97.6%
NT	3,447	3,298	99.4%	95.1%
TOTAL	394,052	381,113	98.2%	95.0%

Source: the NDIS Commission has established a requirement for registered NDIS providers who provide intensive disability support services to report on the vaccination status of workers they employ, or otherwise engage, to deliver NDIS-funded supports and services, and who are required to be vaccinated in accordance with in-force state and territory public health orders. The statistics reflect data reported to the NDIS Commission by registered NDIS providers and should be considered indicative and subject to change

Note: Some registered NDIS providers are yet to report on the vaccination status of their workforce. The NDIS Commission is working with those providers around reporting requirements.

Remaining workers not included include those exempt from vaccination requirements, workers whose vaccination status is not yet verified by the provider (such as workers on leave) and provider reporting anomalies.

Residential aged care vaccination rollout

Residential aged care facilities status

170,624

People fully vaccinated

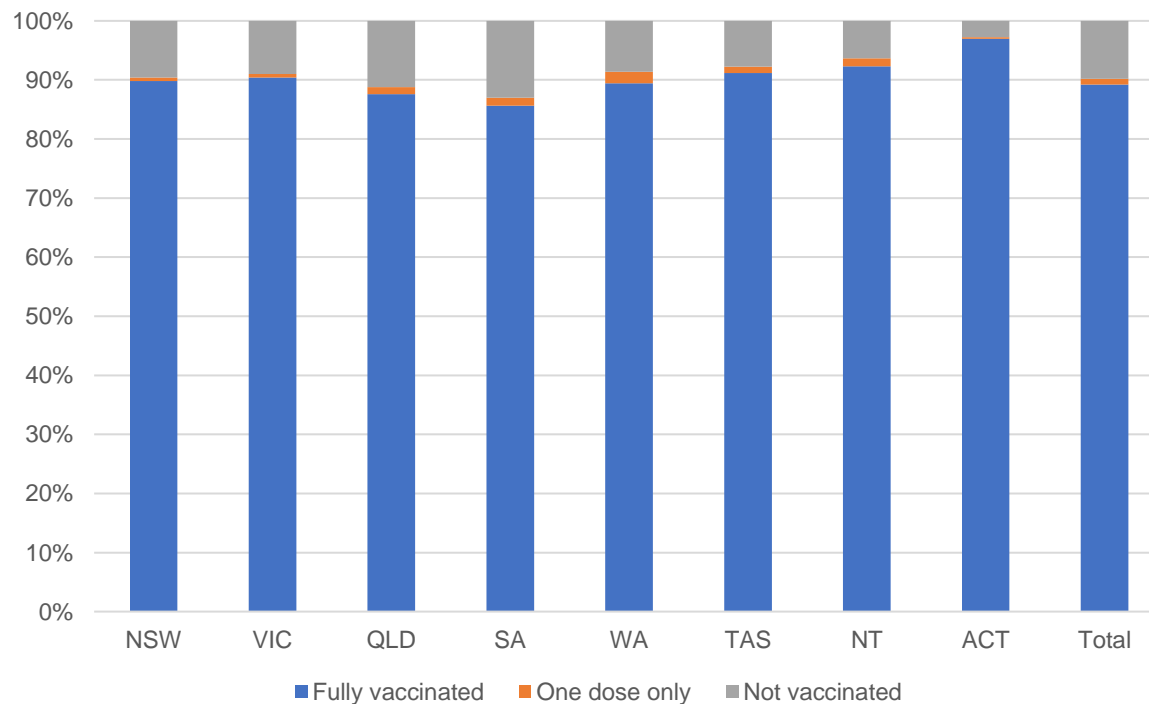
172,394

People with at least one dose

Australia's COVID-19 Vaccine Roadmap

Data as at:
28 Apr 2022
Updated weekly

Aged care resident vaccinations



Aged care worker vaccinations

Jurisdictions	Total workers with at least one dose	Workers fully vaccinated	% Workers with at least one dose	% Workers fully vaccinated
NSW	75,060	75,053	96.4%	96.4%
VIC	65,066	65,062	94.7%	94.7%
QLD	45,853	45,616	95.2%	94.7%
SA	26,224	26,208	96.1%	96.1%
WA	24,071	24,069	99.2%	99.2%
TAS	7,547	7,544	99.9%	99.9%
NT	902	902	100.0%	100.0%
ACT	2,855	2,855	93.9%	93.9%
Total	247,578	247,309	96.0%	95.9%

Source: My Aged Care Portal vaccination progress

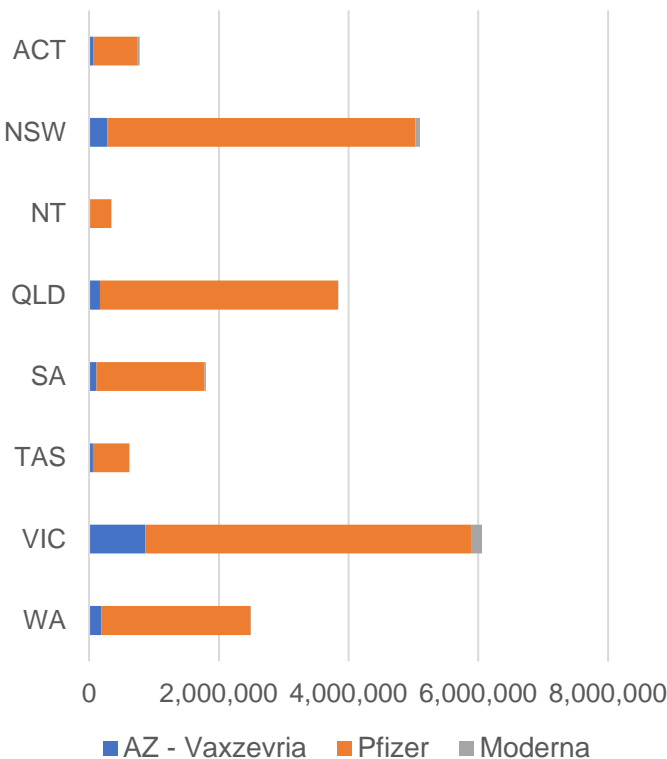
*Status updates are provided by facilities at least once per week. Reporting is updated Monday to Friday to encompass different facility updates being made on different days.

Data is sourced directly from Aged Care Service Providers and is not drawn or closely aligned with data from AIR due to inconsistencies and potential lags in uploading of records.

Data as at:
02 May 2022

Jurisdiction administered

Total vaccine doses administered in State and Territory clinics as at 02 May



21,034,797 total vaccine doses administered
in State and Territory clinics as at 02 May
+ **6,062** recorded in the last 24 hours
+ **51,182** recorded in the last 7 days

NSW
5,102,190
(+1,766 daily
increase)

VIC
6,060,869
(+1,391 daily
increase)

QLD
3,837,982
(+14 daily
increase)

WA
2,492,591
(+1,315 daily
increase)

TAS
620,016
(+75 daily
increase)

SA
1,802,581
(+816 daily
increase)

ACT
778,258
(+681 daily
increase)

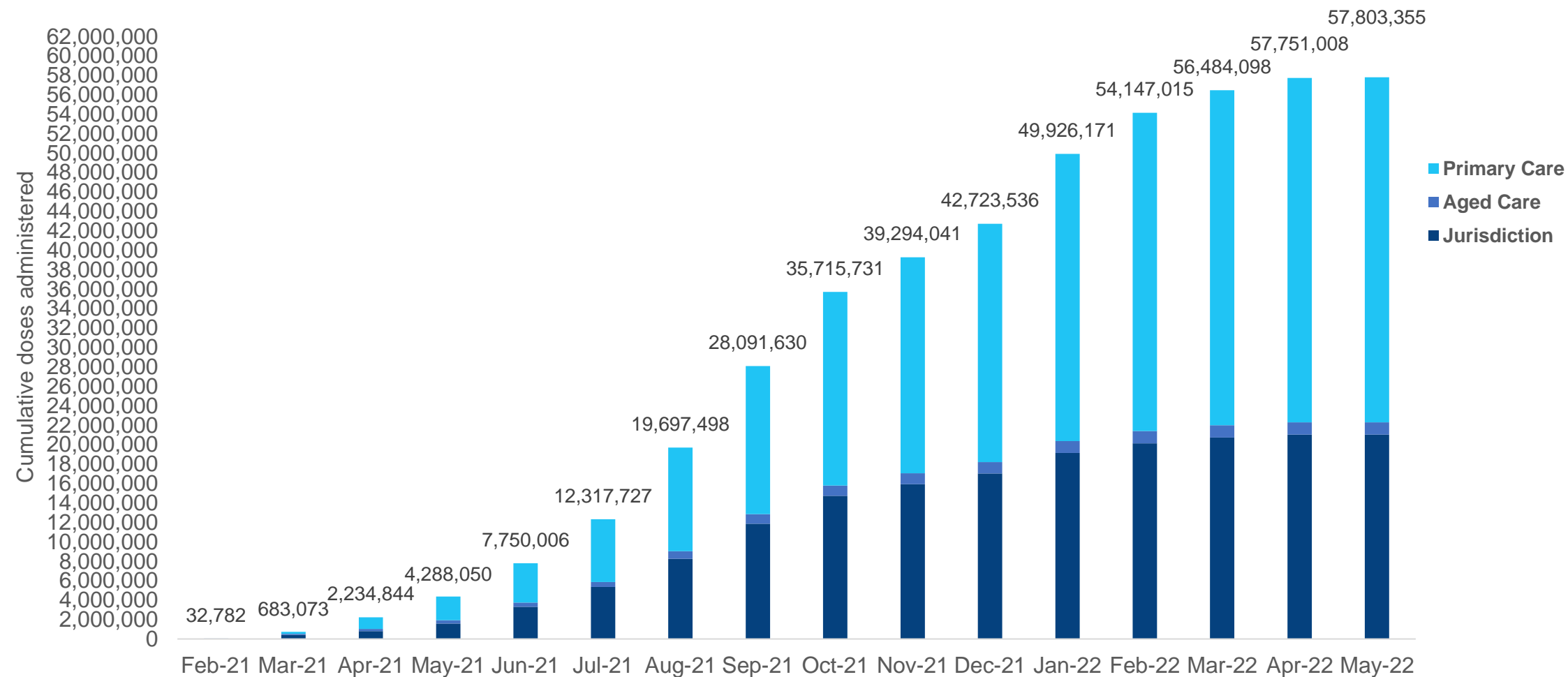
NT
340,310
(<10 daily
increase)

*Sourced from the Australian Immunisation Register. Numbers are calculated as difference in daily cumulative reported numbers to allow for historical corrections.

Source: Australian Immunisation Register

Cumulative doses administered by channel

Data as at:
02 May 2022



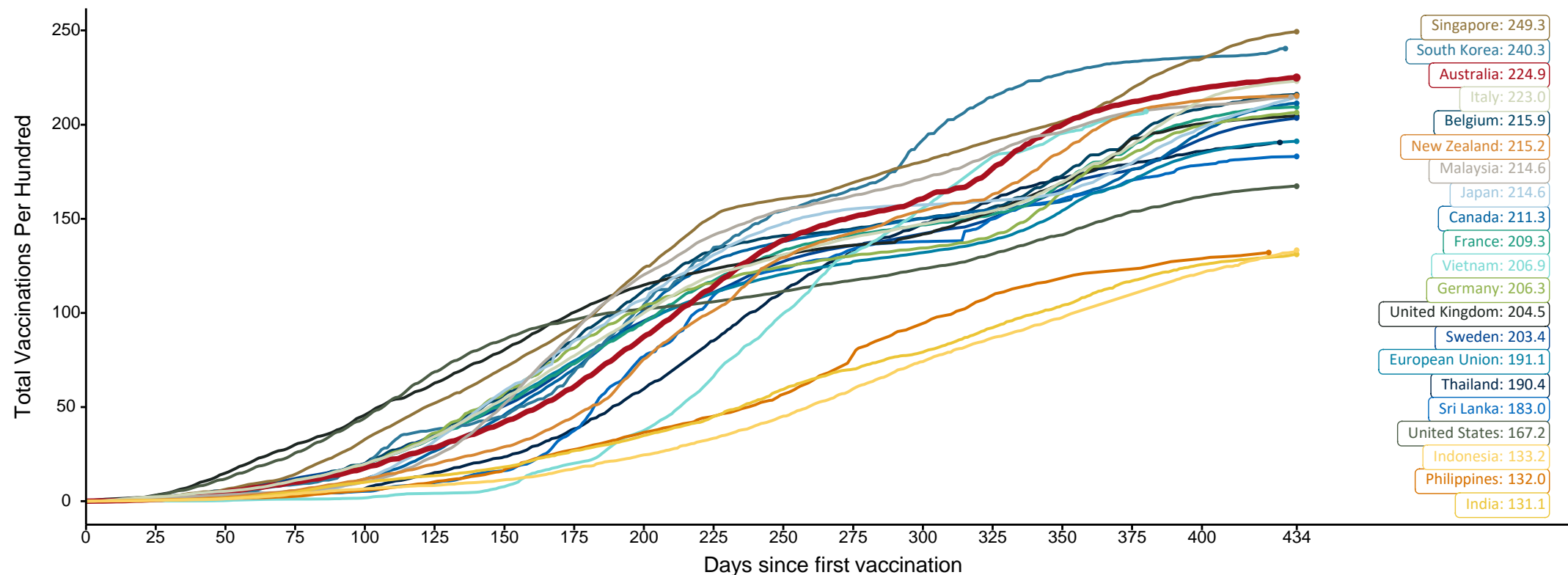
Source: Australian Immunisation Register

Doses at equivalent stages of rollout (Day 434)

Data as at:
02 May 2022

The x-axis is truncated at the length of Australia's vaccination program. Countries with intermittent reporting have had their doses per 100 imputed to Australia's current stage of rollout. Israel excluded as it is beyond scale of the graph

Cumulative doses administered (02 May): **57,803,355**



Note: From 11 January 2022, data for Australia includes all doses administered to people 5 and over. Prior to 11 January, data was for 12 and over.

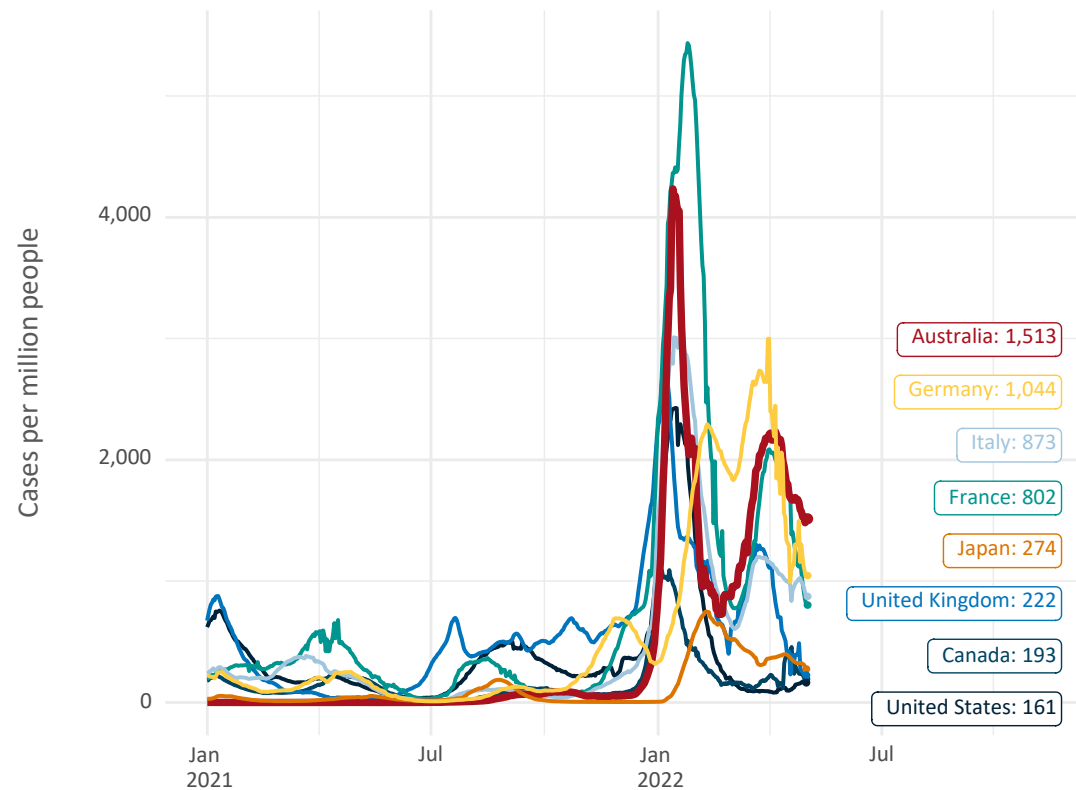
Source: Department of Health (Australia), Our World in Data (international)

Latest data: 02 May

Data as at:
02 May 2022

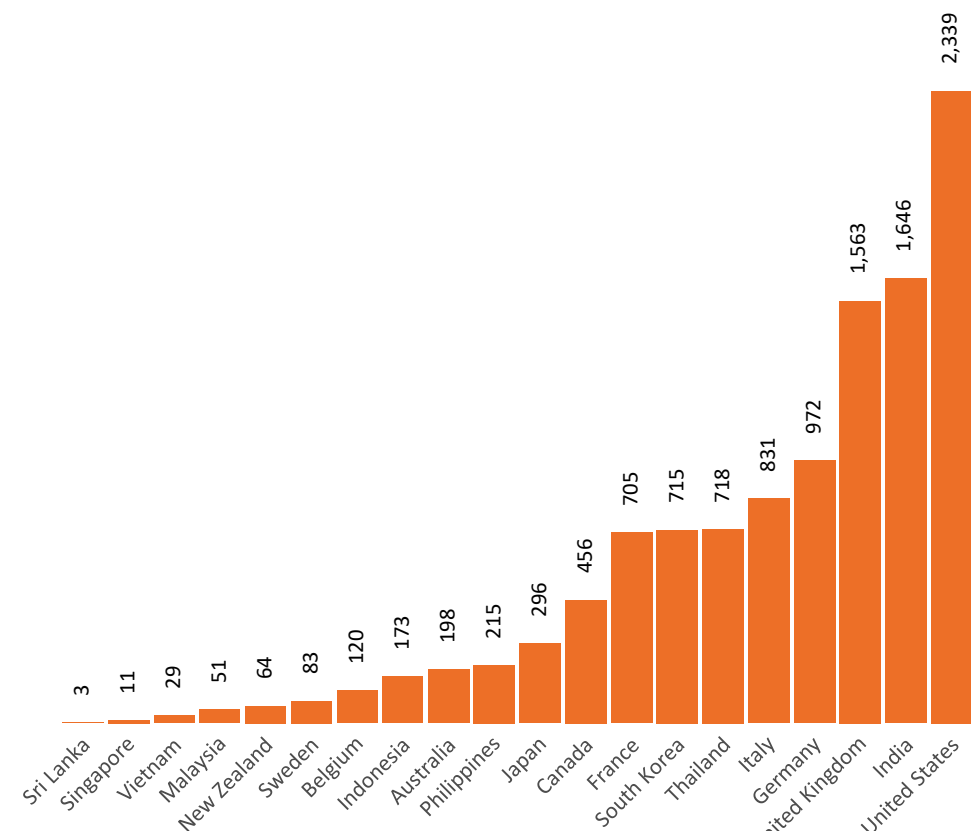
International data – COVID-19

New daily cases per million since 2021, Australia and G7 countries
Smoothed - 7 day average



Source: OWID
Data downloaded: 03 May 2022 10:33
Latest data: 02 May 2022

COVID-19 deaths in past 7 days - Australia and select countries

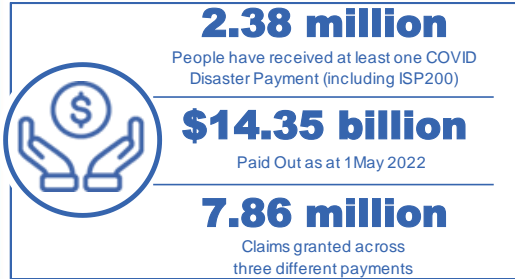


Source: OWID
Data downloaded: 03 May 2022 10:33
Latest data: 02 May 2022

Pandemic Response Payments

Australia's COVID-19
Vaccine Roadmap

Data as at midnight: 1 May 2022
Updated weekly



COVID Disaster Payment:	5.89 million claims received - 2.19 million individuals paid a total of \$12.59 billion.
\$200 Income Support Payment:	353,000 claims received - 183,000 individuals paid a total of \$268.9 million.
Pandemic Leave Disaster Payment:	2.12 million claims received - 1.29 million individuals paid a total of \$1.49 billion.



COVID Disaster Payment

assisting during a lockdown event in a Commonwealth hotspot.

Income Support Payment \$200

for income support recipients who lost at least 8 hours of work.

Pandemic Leave Disaster Payment

for those who have to self-isolate, quarantine or care.

For more information visit:
servicesaustralia.gov.au

COVID-19 DISASTER PAYMENTS

Northern Territory

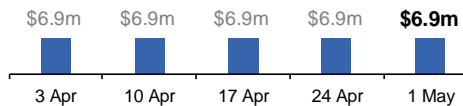
Lockdown (#3) from 16 Nov to 22 Nov
Claiming period ended 27 Dec

7,500 people have received at least one COVID Disaster Payment.

\$6.9m paid out as at 1 May 2022.

Nil paid in initial payments in the week ending 1 May 2022.

Cumulative payments made by Territory since activation on 25 Aug 2021.



Victoria

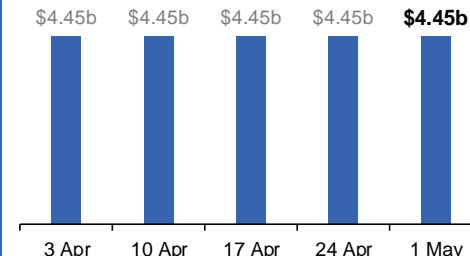
Lockdown (#6) from 6 Aug to 28 Oct
Claiming period ended 9 Dec

745,000 people have received at least one COVID Disaster Payment.

\$4.45b paid out as at 1 May 2022.

Nil paid in initial and reoccurring payments in the week ending 1 May 2022.

Cumulative payments made by State since activation on 8 Jun 2021.



New South Wales

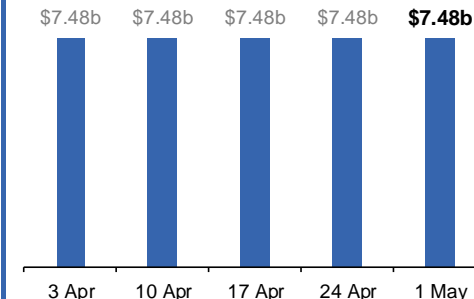
Lockdown from 24 Jun to 10 Oct
Claiming period ended 27 Nov

1.08m people have received at least one COVID Disaster Payment.

\$7.48b paid out as at 1 May 2022.

Nil paid in initial and reoccurring payments in the week ending 1 May 2022.

Cumulative payments made by State since activation on 1 Jul 2021.



Australian Capital Territory

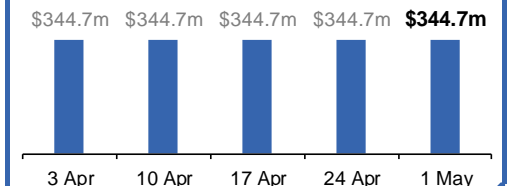
Lockdown from 12 Aug to 14 Oct
Claiming period ended 25 Nov

65,000 people have received at least one COVID Disaster Payment.

\$344.7m paid out as at 1 May 2022.

Nil paid in initial and reoccurring payments in the week ending 1 May 2022.

Cumulative payments made by Territory since activation on 20 Aug 2021.



Pandemic Response Payments (continued)

Data as at midnight: 1 May 2022
Updated weekly

COVID-19 DISASTER PAYMENTS

Tasmania

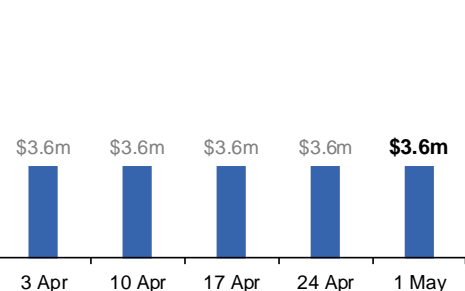
Lockdown from 15 Oct to 18 Oct
Claiming period ended 12 Nov

6,900 people have received at least one COVID Disaster Payment.

\$3.6m paid out as at 1 May 2022.

Nil paid in initial and reoccurring payments in the week ending 1 May 2022.

Cumulative payments made by State since activation on 22 Oct 2021.



Queensland

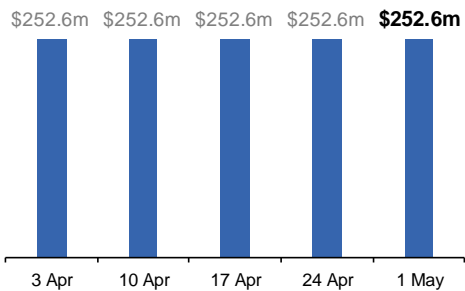
Lockdown from 31 Jul to 11 Aug
Claiming period ended 28 Aug

196,000 people have received at least one COVID Disaster Payment.

\$252.6m paid out as at 1 May 2022.

Nil paid in initial and reoccurring payments in the week ending 1 May 2022.

Cumulative payments made by State since activation on 7 Aug 2021.



South Australia

Lockdown from 21 to 27 Jul
Claiming period ended 17 Aug

86,000 people have received at least one COVID Disaster Payment.

\$48.2m paid out as at 1 May 2022.

Nil paid in initial and reoccurring payments in the week ending 1 May 2022.

Cumulative payments made by State since activation on 28 Jul 2021.

