



Australian Government
Operation COVID Shield

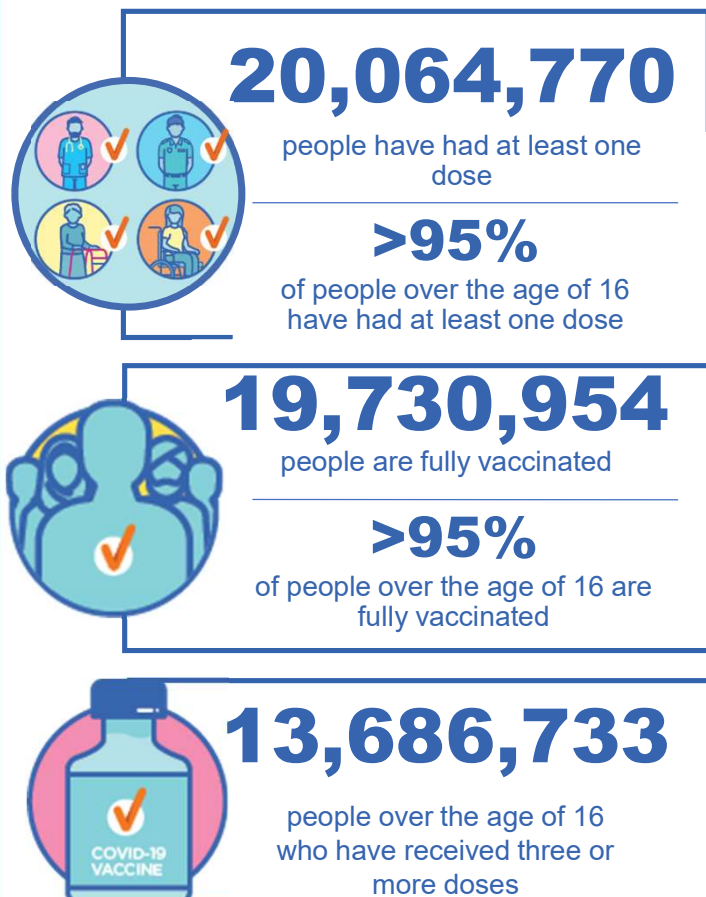
**Australia's COVID-19
Vaccine Roadmap**

COVID-19 Vaccine Roll-out

29 May 2022

Data as at:
28 May 2022

Total vaccine doses



59,110,596 total vaccine doses administered nationally as at 28 May
+21,645 recorded in the last 24 hours

NSW
18,330,495
(+6,865 daily increase)

VIC
15,524,454
(+4,925 daily increase)

QLD
11,178,165
(+3,417 daily increase)

WA
6,507,797
(+2,865 daily increase)

TAS
1,337,424
(+439 daily increase)

SA
4,097,202
(+2,023 daily increase)

ACT
1,547,471
(+961 daily increase)

NT
587,588
(+150 daily increase)

*Administration state breakdown indicates state in which a vaccine was administered

**Overall dose count includes instances of more than three doses per person in a small number of cases.

Source: Australian Immunisation Register

Data as at:
28 May 2022

Booster Vaccinations



219,725

Indigenous people who have
received three or more doses

53.4%

of eligible population (411,244)



164,764

Aged Care Residents who have
received three or more doses^{##}

93.5%

of eligible population (176,160)



188,466

NDIS participants

who have received three or more doses[#]

74.5%

of eligible population
(252,000)

21,574

NDIS residents

88.9%

of eligible population
(24,000)



13,686,733

total people who have
received three or more doses

+4,782 daily increase

69.9% of eligible population (19,576,249)

	Number of People	Daily Increase	% of Eligible
NSW	4,174,687	1,294	67.2%
VIC	3,654,543	1,204	72.2%
QLD	2,369,015	677	63.0%
WA	1,683,692	622	83.2%
SA	974,209	701	73.3%
TAS	312,849	81	72.4%
ACT	270,987	117	78.3%
NT	129,371	52	77.3%

*People may belong to multiple groups and could be represented in the above breakdowns multiple times.
NDIS participants data as at 25 May 2022. ## Aged Care Residents data as at 27 May 2022.

Source: Australian Immunisation Register

117,380 doses administered to persons
residing in other territories or with
missing residential information

Winter / Fourth Doses

Data as at:
28 May 2022

Australia's COVID-19
Vaccine Roadmap



1,468,849 total people (16+) who have received four or more doses

+13,357 daily increase

	Number of People 16+	Daily Increase
ACT	31,966	558
NSW	476,256	4,421
NT	6,601	32
QLD	278,911	2,338
SA	117,900	1,002
TAS	41,380	281
VIC	368,341	2,851
WA	140,579	1,817

6,915 doses administered to persons
residing in other territories or with
missing residential information

Source: Australian Immunisation Register

Data as at:
28 May 2022

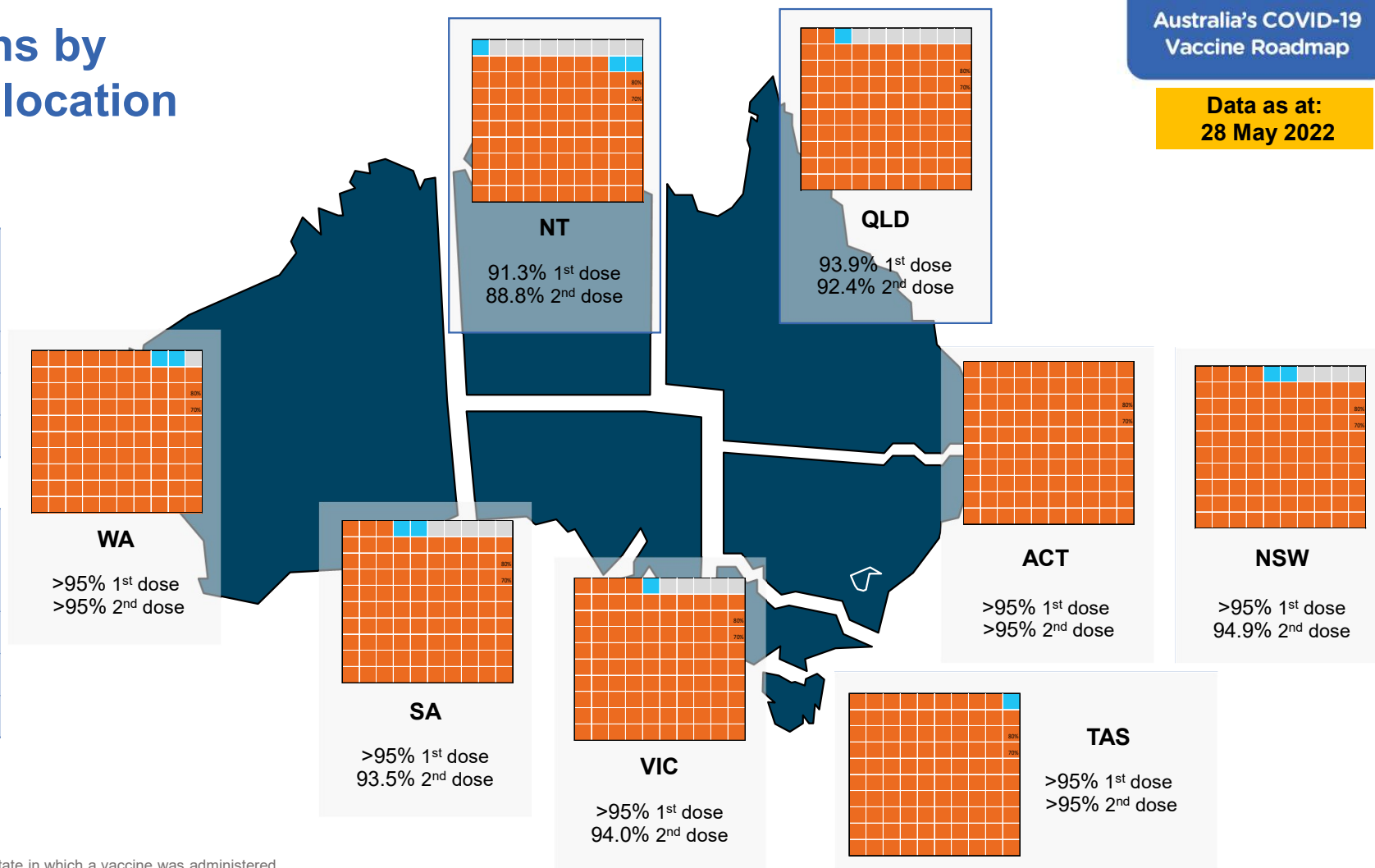
Vaccinations by residential location

First doses

Age Today	4 weeks ago	8 weeks ago
16+	>95%	>95%
50+	>95%	>95%
70+	>95%	>95%

Fully vaccinated

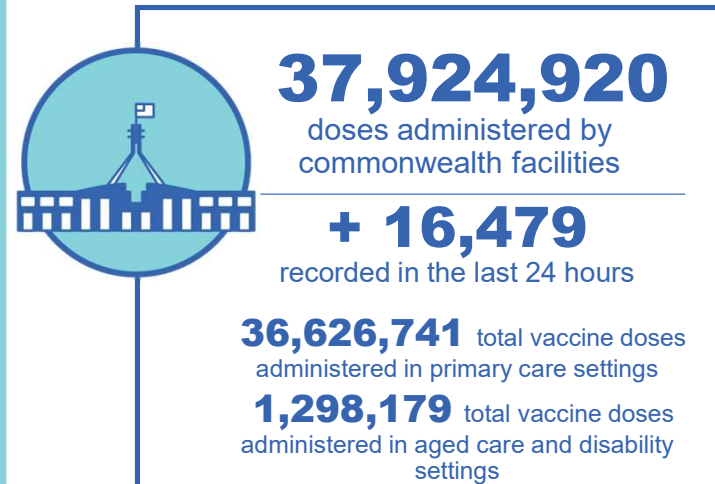
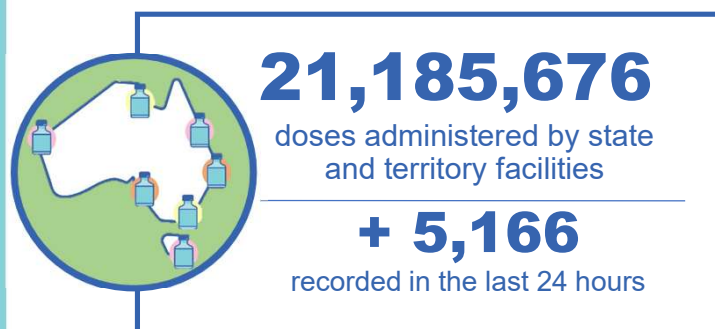
Age Today	4 weeks ago	8 weeks ago
16+	>95%	>95%
50+	>95%	>95%
70+	>95%	>95%



*Residential state may differ from the state in which a vaccine was administered

Data as at:
28 May 2022

Commonwealth and Jurisdiction vaccine doses administered



NSW	Jurisdictions	Commonwealth
Cumulative	5,125,713	13,204,782
Daily increase	1,229	5,636

VIC	Jurisdictions	Commonwealth
Cumulative	6,100,920	9,423,534
Daily increase	1,387	3,538

QLD	Jurisdictions	Commonwealth
Cumulative	3,851,361	7,326,804
Daily increase	372	3,045

WA	Jurisdictions	Commonwealth
Cumulative	2,516,207	3,991,590
Daily increase	593	2,272

TAS	Jurisdictions	Commonwealth
Cumulative	624,305	713,119
Daily increase	199	240

SA	Jurisdictions	Commonwealth
Cumulative	1,827,479	2,269,723
Daily increase	895	1,128

ACT	Jurisdictions	Commonwealth
Cumulative	794,715	752,756
Daily increase	401	560

NT	Jurisdictions	Commonwealth
Cumulative	344,976	242,612
Daily increase	90	60

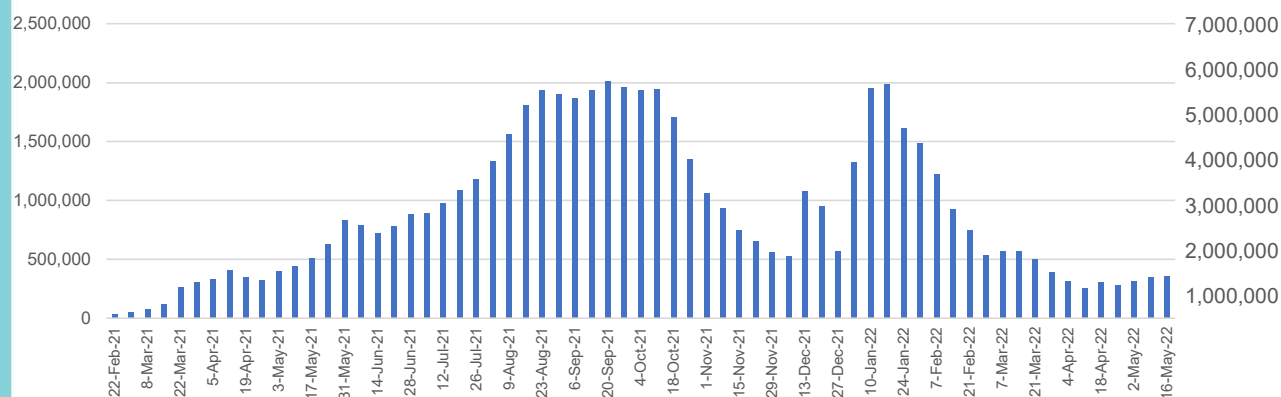
Source: Australian Immunisation Register

Vaccine milestone charts

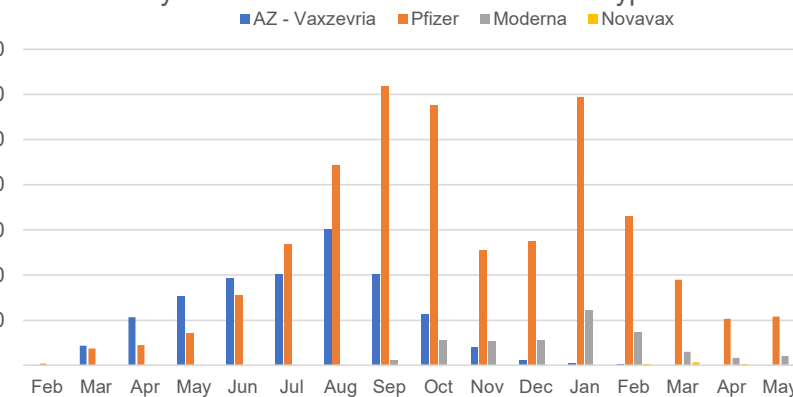
Data as at:
28 May 2022

Australia's COVID-19
Vaccine Roadmap

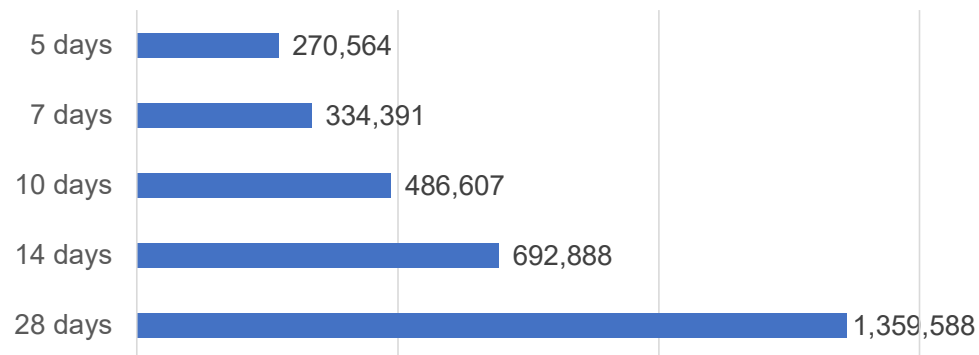
Doses Administered by Week



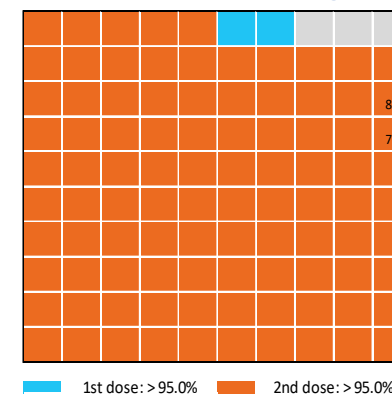
Doses by administration month and vaccine type



Doses Reported



Eligible population percentage coverage



*Each square represents 1% of the national population.
Squares are filled as milestones are achieved.

*Sourced from the Australian Immunisation Register.

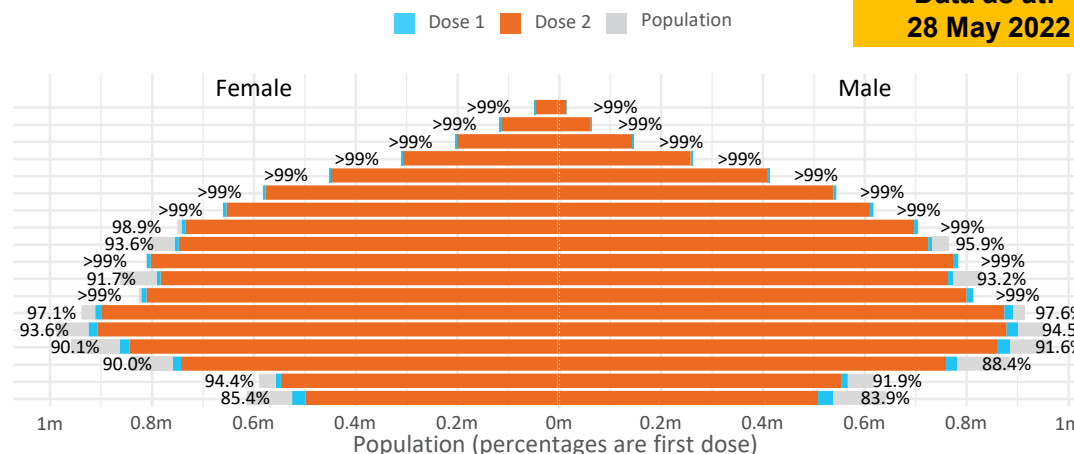
Data as at:
28 May 2022

Doses by age and sex

First and second doses by age and sex

	16+	50+	12 15	5 11
Dose 1	97.31% (20,064,770 doses / 20,619,959 people)	>99% (8,893,627 doses / 8,749,703 people)	84.64% (1,052,968 doses / 1,243,990 people)	52.66% (1,198,958 doses / 2,276,638 people)
Dose 2	95.69% (19,730,954 doses / 20,619,959 people)	>99% (8,786,866 doses / 8,749,703 people)	80.19% (997,592 doses / 1,243,990 people)	38.67% (880,309 doses / 2,276,638 people)

Age	Dose 1	Dose 2
95+	63,826 (>99%)	60,417 (>99%)
90-94	179,746 (>99%)	174,185 (>99%)
85-89	347,689 (>99%)	340,819 (>99%)
80-84	568,231 (>99%)	561,004 (>99%)
75-79	858,978 (>99%)	850,617 (>99%)
70-74	1,116,875 (>99%)	1,105,716 (>99%)
65-69	1,267,317 (>99%)	1,252,863 (>99%)
60-64	1,434,311 (>99%)	1,418,099 (98.7%)
55-59	1,475,775 (94.9%)	1,459,208 (93.8%)
50-54	1,580,879 (>99%)	1,563,938 (>99%)
45-49	1,551,350 (92.5%)	1,532,914 (91.4%)
40-44	1,621,445 (>99%)	1,597,439 (98.6%)
35-39	1,791,061 (97.6%)	1,759,030 (95.9%)
30-34	1,817,217 (94.5%)	1,775,518 (92.3%)
25-29	1,743,212 (91.4%)	1,695,807 (88.9%)
20-24	1,532,667 (89.5%)	1,493,042 (87.2%)
16-19	1,114,191 (93.2%)	1,090,338 (91.2%)
12-15	1,052,968 (84.6%)	997,592 (80.2%)



	AUS	ACT	NSW	NT	QLD	SA	TAS	VIC	WA
16 and over - dose 1	20,064,770	352,840	6,329,342	173,978	3,862,345	1,375,715	445,103	5,162,384	2,096,064
16 and over - dose 2	19,730,954	347,187	6,232,472	169,287	3,798,672	1,346,511	436,073	5,085,198	2,064,898
16 and over - population	20,619,959*	344,037	6,565,651	190,571	4,112,707	1,440,400	440,172	5,407,574	2,114,978
16 and over % with dose 1	97.31%	>99%	96.40%	91.29%	93.91%	95.51%	>99%	95.47%	>99%
16 and over % with dose 2	95.69%	>99%	94.93%	88.83%	92.36%	93.48%	>99%	94.04%	97.63%
5 to 11 - dose 1	1,198,958	31,902	357,800	13,222	208,031	84,060	28,581	326,227	141,305
5 to 11 - dose 2	880,309	26,972	267,805	8,526	147,199	61,851	22,851	240,629	99,891
5 to 11 - population	2,276,638	39,789	716,460	24,750	478,731	148,816	45,033	578,499	244,154
5 to 11 % with dose 1	52.66%	80.18%	49.94%	53.42%	43.45%	56.49%	63.47%	56.39%	57.88%
5 to 11 % with dose 2	38.67%	67.79%	37.38%	34.45%	30.75%	41.56%	50.74%	41.60%	40.91%
12 to 15 - dose 1	1,052,968	20,118	323,709	10,825	206,369	68,390	22,930	275,145	115,885
12 to 15 - dose 2	997,592	19,581	309,411	9,752	193,151	64,703	21,818	263,409	107,410
12 to 15 - population	1,243,990	19,693	390,330	13,060	270,146	82,747	26,308	308,611	132,869
12 to 15 % with dose 1	84.64%	>99%	82.93%	82.89%	76.39%	82.65%	87.16%	89.16%	87.22%
12 to 15 % with dose 2	80.19%	>99%	79.27%	74.67%	71.50%	78.19%	82.93%	85.35%	80.84%

*National population will not equal sum of listed jurisdictions due to a small number of people counted in national population residing in some 'other' territories. Sum of state doses will not add to national total as some records are unable to be geocoded to a State or Territory.

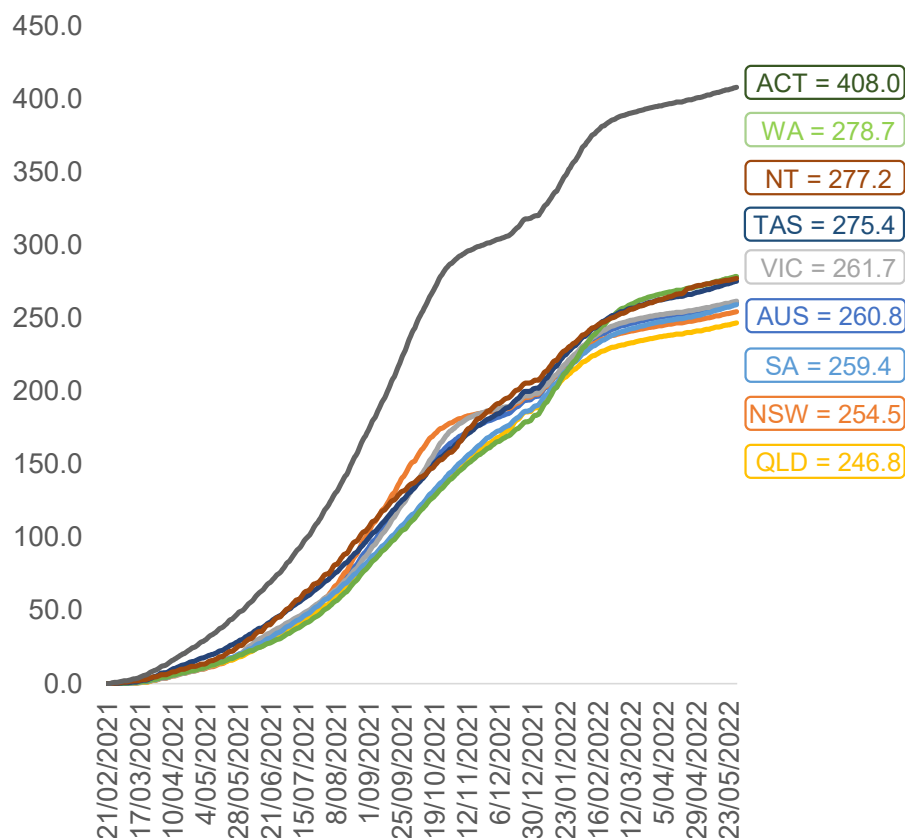
Doses sourced from Australian Immunisation Register, population from ABS ERP June 2020

Vaccinations by location

Data as at:
28 May 2022

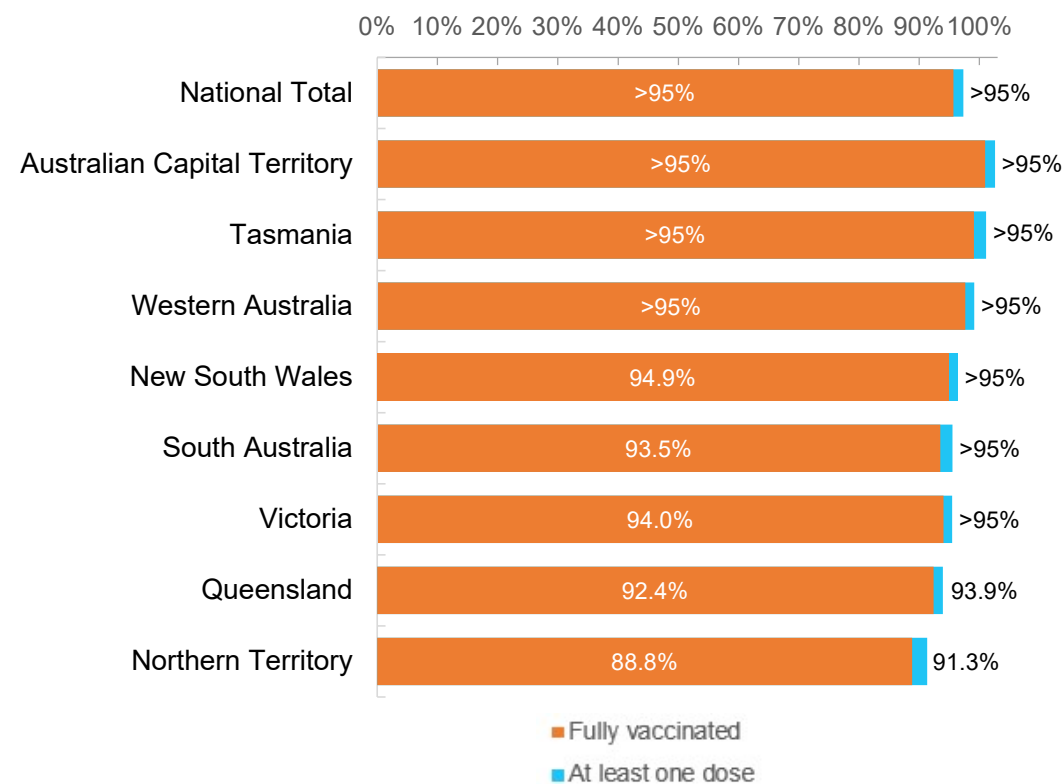
Australia's COVID-19
Vaccine Roadmap

Cumulative total doses administered vs eligible state populations*



*Not an indication of percentage vaccinated, numbers will exceed 100 due to multiple doses required per person of the population.
All doses are included for those aged 12 and above, and are based on vaccination provider location.

First and Second Doses by residential location

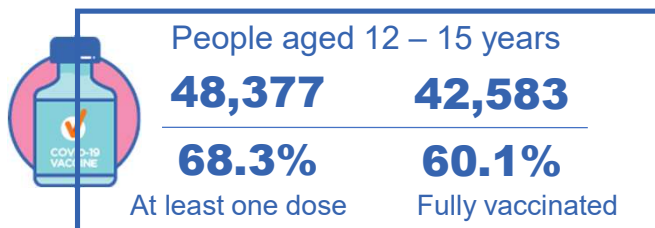
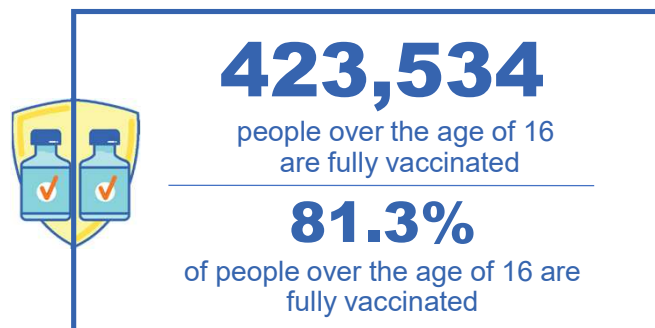


Aboriginal and Torres Strait Islander peoples

Number of people vaccinated

Data as at:
24 May 2022
Updated weekly

Australia's COVID-19
Vaccine Roadmap



178 Aboriginal community controlled health services (ACCHS)

0#	50	27	44	12	3	21	21
ACT	NSW	NT	QLD	SA	TAS	VIC	WA

Medicare Address State ^{##}	Individuals Dose 1	Individuals Dose 1 %	Individuals Dose 2	Individuals Dose 2 %
Australian Capital Territory	4,796	91.4%	4,676	89.1%
New South Wales	135,984	87.3%	132,925	85.3%
Northern Territory	41,496	89.6%	39,447	85.2%
Queensland	116,165	81.8%	110,722	77.9%
South Australia	20,003	80.4%	18,598	74.8%
Tasmania	13,954	88.8%	13,545	86.2%
Victoria	35,681	90.4%	34,902	88.4%
Western Australia	53,681	86.6%	49,865	80.5%
Unknown/Other Territories	20,510	69.5%	18,854	63.9%
Totals	442,270	84.9%	423,534	81.3%

Source: Australian Immunisation Register

*Identifying as Aboriginal and Torres Strait Islander is optional and the estimated population may be under reported.

**Includes all Aboriginal and Torres Strait Islander peoples who have received a vaccination, not limited to those administered in an ACCHS setting

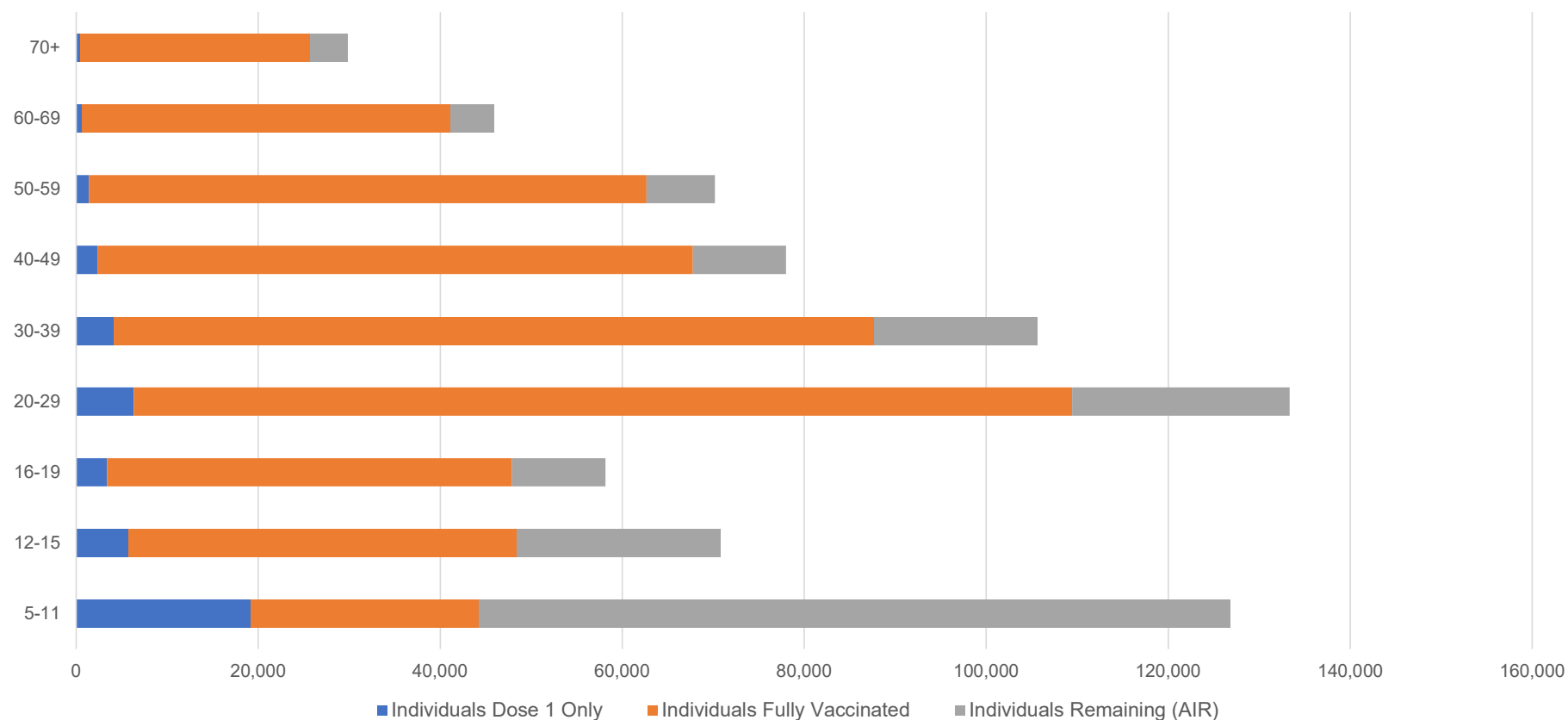
[#]ACCHS in the ACT are currently operating as a Commonwealth Vaccine Clinics so not included to avoid double counting

^{##}The above table includes all identified Aboriginal and Torres Strait Islander people who are aged 16 and above by their state of residence.

Aboriginal and Torres Strait Islander peoples Number of people vaccinated by age

Data as at:
24 May 2022
Updated weekly

Australia's COVID-19
Vaccine Roadmap



Source: Australian Immunisation Register

Commonwealth primary care

Data as at:
28 May 2022

Australia's COVID-19
Vaccine Roadmap



Primary care vaccine administration sites

5,717	128	178	3,597
GPs	CVCs	ACCHS	Pharmacies



36,626,741 total vaccine doses administered
primary care settings as at 28 May
+ 16,104 recorded in the last 24 hours

Primary care vaccinations by provider type

	Doses administered	Daily increase	7 day increase
General Practice* includes other Commonwealth	29,365,608	11,715	210,153
Pharmacy	7,261,133	4,389	79,393

NSW
12,639,915
(+5,557 daily increase)

VIC
9,095,384
(+3,476 daily increase)

QLD
7,044,465
(+3,024 daily increase)

WA
3,854,231
(+2,285 daily increase)

TAS
691,726
(+225 daily increase)

SA
2,188,999
(+1,022 daily increase)

ACT
579,061
(+492 daily increase)

NT
217,984
(+44 daily increase)

314,976

doses administered to persons
residing in other territories or with
missing residential information

*General practice includes Commonwealth Vaccination Clinics, Aboriginal Community Health Centres, Royal Flying Doctor Service and other Commonwealth vaccination facilities

Source: Australian Immunisation Register

Data as at:
28 May 2022

Commonwealth aged care and disability doses administered



1,298,179 (+ 375 last 24 hours)

Total vaccine doses administered in aged care and disability facilities as at 28 May

Number of doses administered as part of the Commonwealth aged and disability care rollout

NSW
565,858
(+21 daily increase)

VIC
244,215
(+121 daily increase)

QLD
206,382
(+69 daily increase)

WA
109,881
(+10 daily increase)

TAS
23,517
(<10 daily increase)

SA
85,032
(+122 daily increase)

ACT
17,678
(+36 daily increase)

NT
7,659
(<10 daily increase)

37,957

doses administered to persons residing in other territories or with missing residential information

Source: Australian Immunisation Register

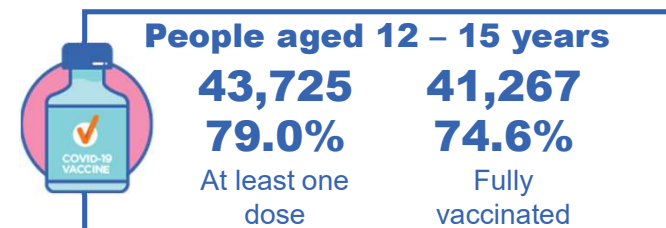
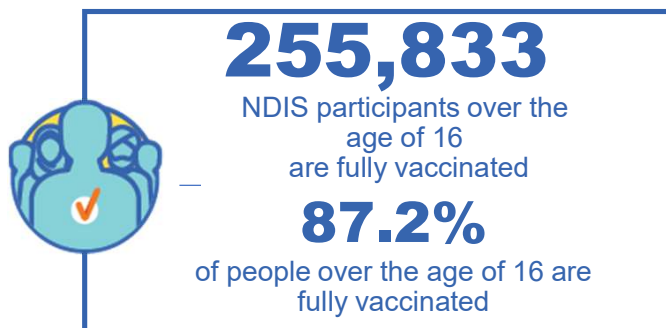
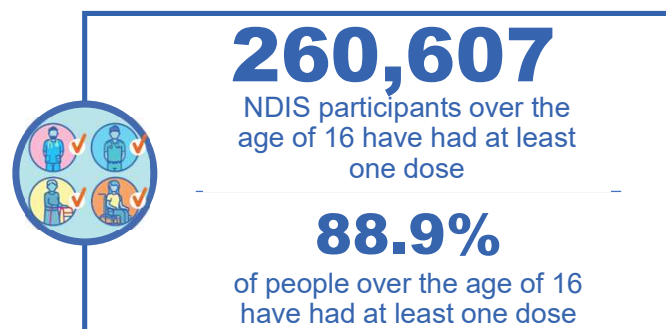
*Sourced from the Australian Immunisation Register. Includes all persons vaccinated at participating residential aged care, disability and related industry settings.

**State level breakdown indicates the residential location and may not align to the state in which the vaccination occurred.

National Disability Insurance Scheme (NDIS) reported vaccinations

Data as at:
26 May 2022
Updated weekly

Australia's COVID-19
Vaccine Roadmap



NDIS participant vaccinations

	People aged 16+ with at least one dose	People aged 16+ fully vaccinated	% People aged 16+ with at least one dose	% People aged 16+ fully vaccinated
ACT	4,920	4,852	90.7%	89.5%
NSW	79,886	78,583	89.0%	87.6%
NT	2,258	2,190	79.1%	76.8%
QLD	51,505	50,533	87.5%	85.9%
SA	21,307	20,800	86.9%	84.8%
TAS	6,526	6,373	88.8%	86.7%
VIC	69,309	68,130	90.0%	88.5%
WA	24,896	24,372	90.4%	88.5%
National	260,607	255,833	88.9%	87.2%

Source: Linkage between National Disability Insurance Agency data and the Australian Immunisation Register. Total NDIS participant numbers as at 28 February. Australian Immunisation Register data as at 25 May. Includes all participants regardless of residence type.

National Disability Insurance Scheme (NDIS) reported vaccinations

Data as at:
26 May 2022
Updated weekly

Australia's COVID-19
Vaccine Roadmap

NATIONAL	Total people with at least one dose	People fully vaccinated	Total number of individuals in cohort	% People with at least one dose	% People fully vaccinated
NDIS participants living in disability accommodation	20,762	20,425	23,352	88.9%	87.5%

NDIS participants in disability and aged care accommodation



Source: Linkage between National Disability Insurance Agency data and the Australian Immunisation Register. Includes participants residing in disability accommodation only.
Source: Total NDIS participant numbers as at 28 February. Participant data as at 24 May. Australian Immunisation Register data as at 25 May. Worker data as at 26 May.

NDIS workforce vaccinations

	NDIS workers with at least one dose	NDIS workers fully vaccinated	% NDIS workers with at least one dose	% NDIS workers fully vaccinated
NSW	126,495	120,487	98.3%	93.6%
VIC	117,331	113,969	98.3%	95.5%
QLD	70,932	69,987	97.7%	96.4%
WA	34,530	33,014	98.8%	94.4%
SA	35,910	33,756	98.6%	92.7%
TAS	10,944	10,696	99.0%	96.8%
ACT	12,301	12,277	99.7%	99.6%
NT	3,854	3,708	99.6%	95.9%
TOTAL	412,297	397,894	98.3%	94.9%

Source: the NDIS Commission has established a requirement for registered NDIS providers who provide intensive disability support services to report on the vaccination status of workers they employ, or otherwise engage, to deliver NDIS-funded supports and services, and who are required to be vaccinated in accordance with in-force state and territory public health orders. The statistics reflect data reported to the NDIS Commission by registered NDIS providers and should be considered indicative and subject to change.
Note: Some registered NDIS providers are yet to report on the vaccination status of their workforce. The NDIS Commission is working with those providers around reporting requirements.
Remaining workers not included include those exempt from vaccination requirements, workers whose vaccination status is not yet verified by the provider (such as workers on leave) and provider reporting anomalies.

Residential aged care vaccination rollout

Residential aged care facilities status

176,160

People fully vaccinated

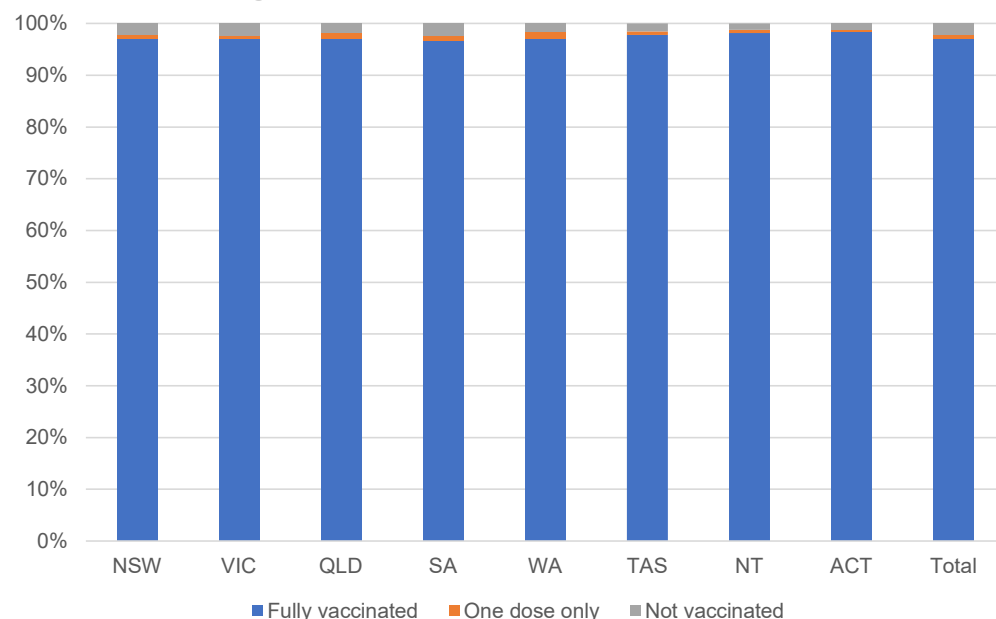
177,559

People with at least one dose

Australia's COVID-19 Vaccine Roadmap

Data as at:
26 May 2022
Updated weekly

Aged care resident vaccinations



Aged care worker vaccinations

Jurisdictions	Total workers with at least one dose	Workers fully vaccinated	% Workers with at least one dose	% Workers fully vaccinated
NSW	77,045	77,037	99.8%	99.8%
VIC	68,568	68,567	98.8%	98.8%
QLD	47,850	47,845	99.5%	99.4%
SA	27,008	26,994	99.2%	99.1%
WA	24,625	24,621	100.0%	100.0%
TAS	7,598	7,596	100.0%	100.0%
NT	882	882	100.0%	100.0%
ACT	2,943	2,943	100.0%	100.0%
Total	256,519	256,485	99.4%	99.4%

Source: My Aged Care Portal vaccination progress

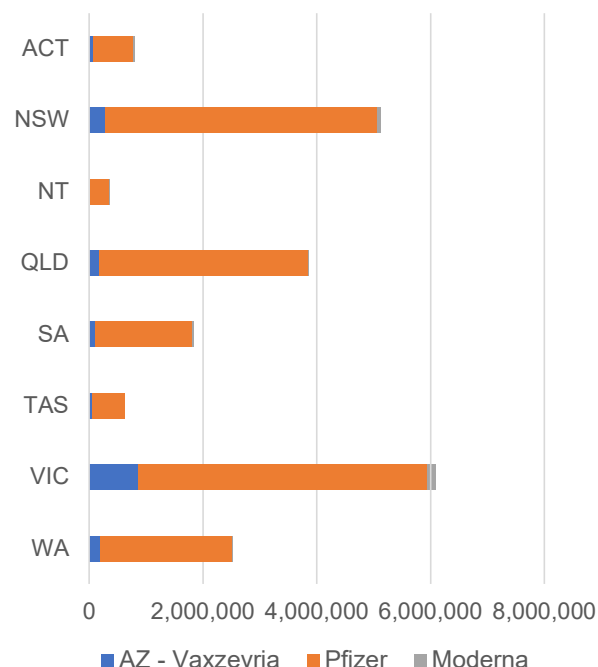
*Status updates are provided by facilities at least once per week. Reporting is updated Monday to Friday to encompass different facility updates being made on different days.

Data is sourced directly from Aged Care Service Providers and is not drawn or closely aligned with data from AIR due to inconsistencies and potential lags in uploading of records.

Data as at:
28 May 2022

Jurisdiction administered

Total vaccine doses administered in State and Territory clinics as at 28 May



21,185,676 total vaccine doses administered
in State and Territory clinics as at 28 May
+ 5,166 recorded in the last 24 hours
+ 37,336 recorded in the last 7 days

NSW
5,125,713
(+1,229 daily increase)

VIC
6,100,920
(+1,387 daily increase)

QLD
3,851,361
(+372 daily increase)

WA
2,516,207
(+593 daily increase)

TAS
624,305
(+199 daily increase)

SA
1,827,479
(+895 daily increase)

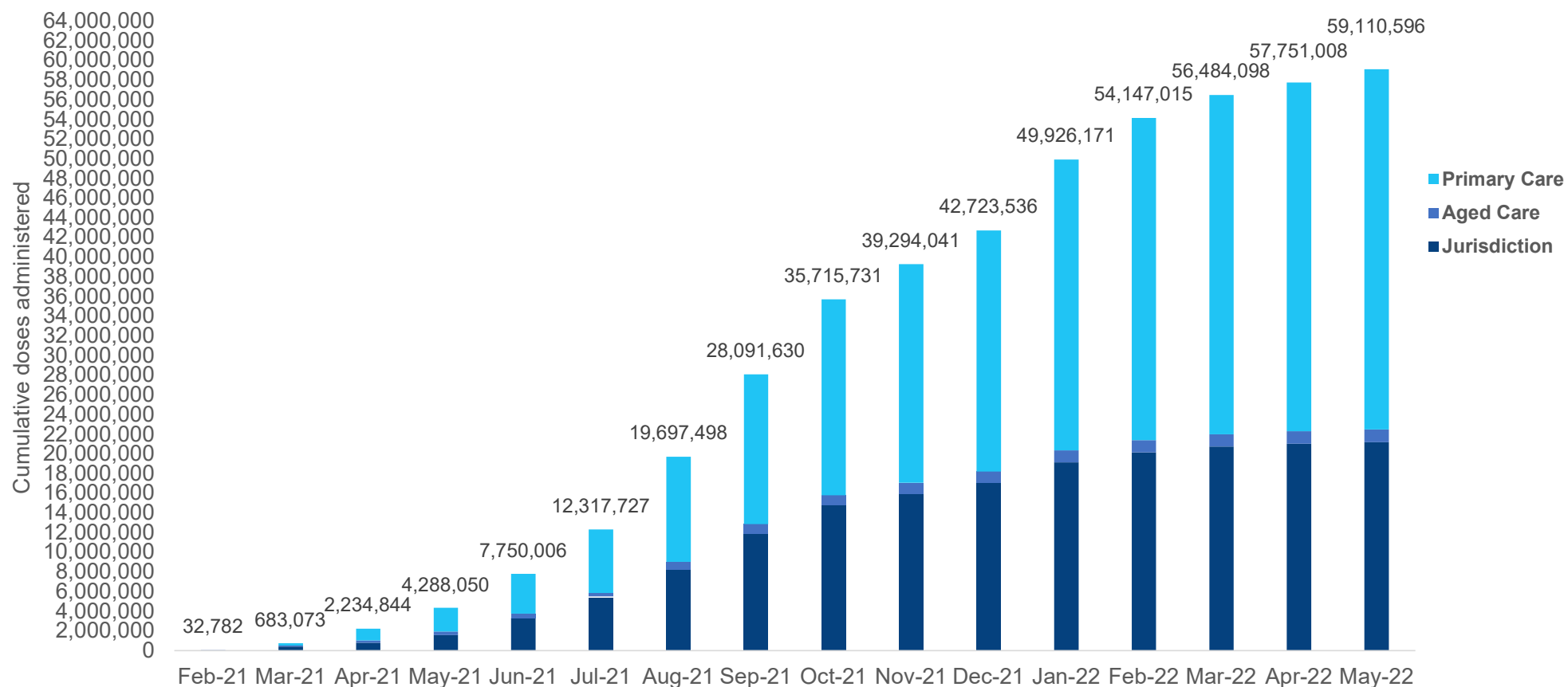
ACT
794,715
(+401 daily increase)

NT
344,976
(+90 daily increase)

*Sourced from the Australian Immunisation Register. Numbers are calculated as difference in daily cumulative reported numbers to allow for historical corrections.

Data as at:
28 May 2022

Cumulative doses administered by channel



Source: Australian Immunisation Register

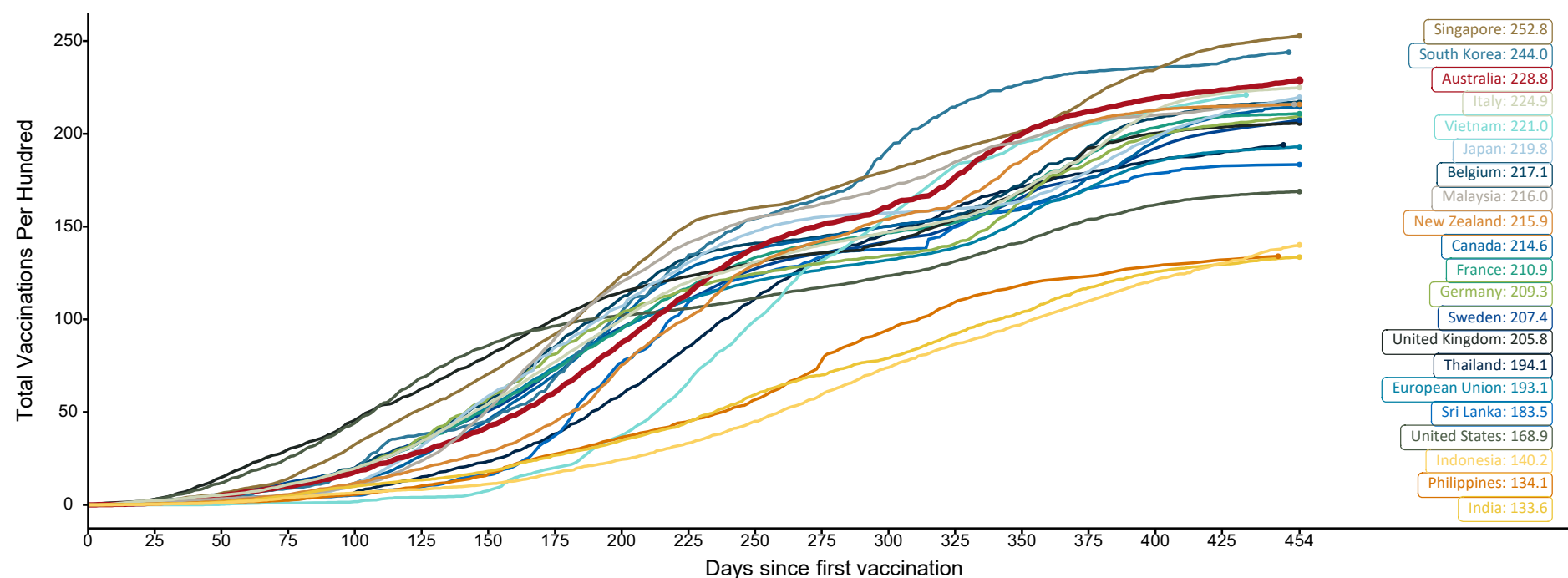
Doses at equivalent stages of rollout (Day 454)

Data as at:
22 May 2022
Updated weekly

Australia's COVID-19
Vaccine Roadmap

The x-axis is truncated at the length of Australia's vaccination program. Countries with intermittent reporting have had their doses per 100 imputed to Australia's current stage of rollout. Israel excluded as it is beyond scale of the graph

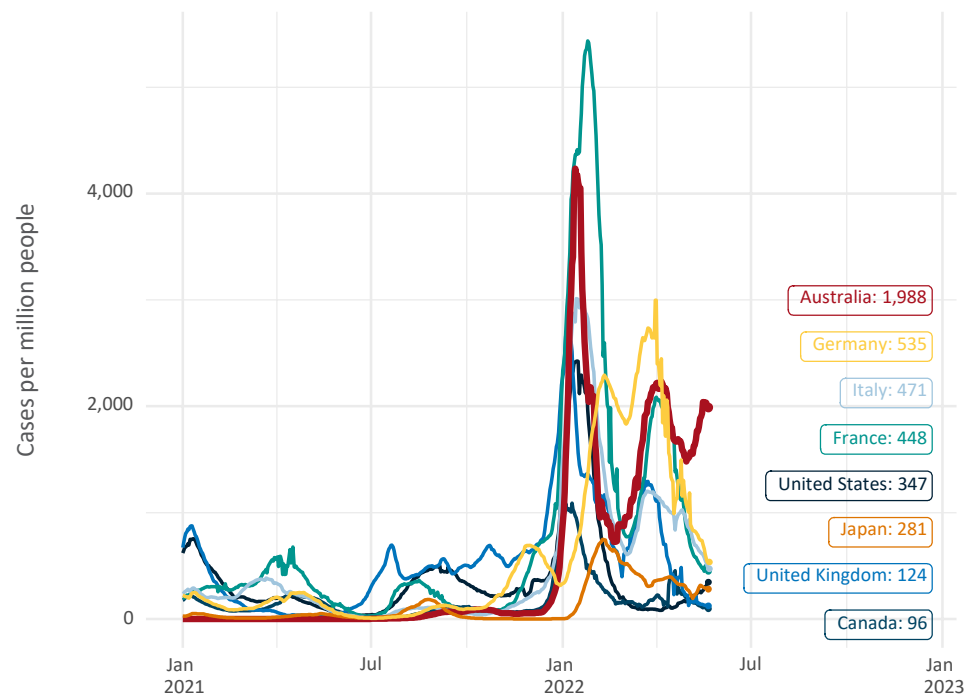
Cumulative doses administered (22 May): **58,784,623**



Note: From 11 January 2022, data for Australia includes all doses administered to people 5 and over. Prior to 11 January, data was for 12 and over.
Source: Department of Health (Australia), Our World in Data (international)
Latest data: 22 May

International data – COVID-19

New daily cases per million since 2021, Australia and G7 countries
Smoothed - 7 day average

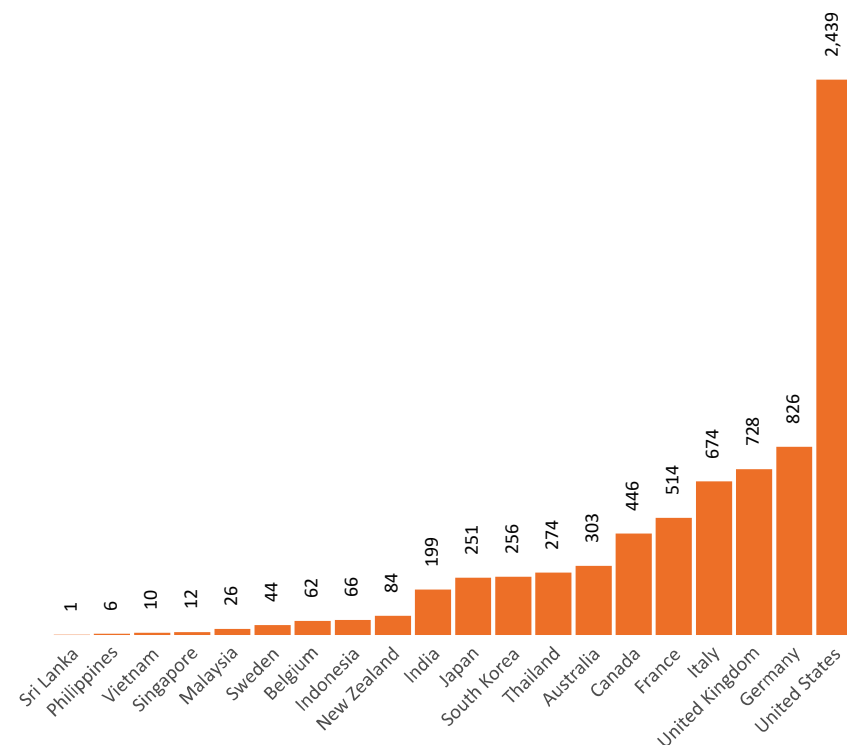


Source: OWID
Data downloaded: 23 May 2022 10:09
Latest data: 22 May 2022

Data as at:
22 May 2022
Updated weekly

Australia's COVID-19
Vaccine Roadmap

COVID-19 deaths in past 7 days - Australia and select countries



Source: OWID
Data downloaded: 23 May 2022 10:09
Latest data: 22 May 2022

Pandemic Response Payments

Australia's COVID-19 Vaccine Roadmap

Data as at midnight:
22 May 2022 (updated weekly)

2.38 million

People have received at least one
COVID Disaster Payment
(including ISP200)

8.12 million

Claims granted across
three different payments

\$14.54 billion

Paid Out as at 22 May 2022

Claims Received Digitally

93%

Three payments available:

COVID Disaster Payment

assisting during a lockdown event
in a Commonwealth hotspot.

Income Support Payment \$200

for income support recipients who
lost at least 8 hours of work.

Pandemic Leave Disaster

for those who have to self-isolate,
quarantine or care.

For more information visit:

www.servicesaustralia.gov.au



COVID Disaster Payment: 5.89 million claims received - 2.19 million individuals paid a total of \$12.59 billion.

\$200 Income Support Payment: 353,000 claims received - 183,000 individuals paid a total of \$268.92 million.

Pandemic Leave Disaster Payment: 2.40 million claims received - 1.43 million individuals paid a total of \$1.67 billion.

COVID-19 DISASTER PAYMENTS

