



**Australian Government**  
**Operation COVID Shield**

# COVID-19 Vaccine Roll-out

27 May 2022

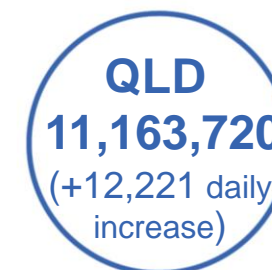
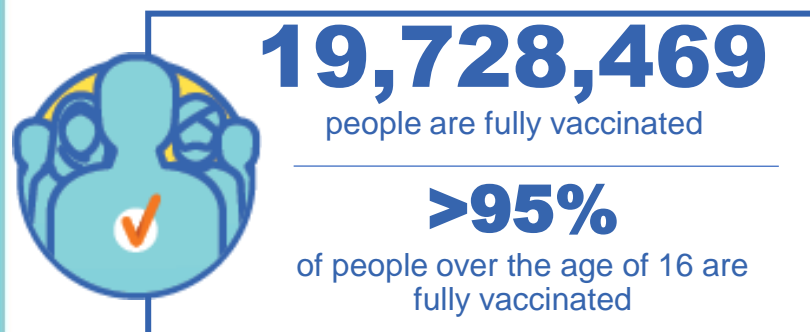
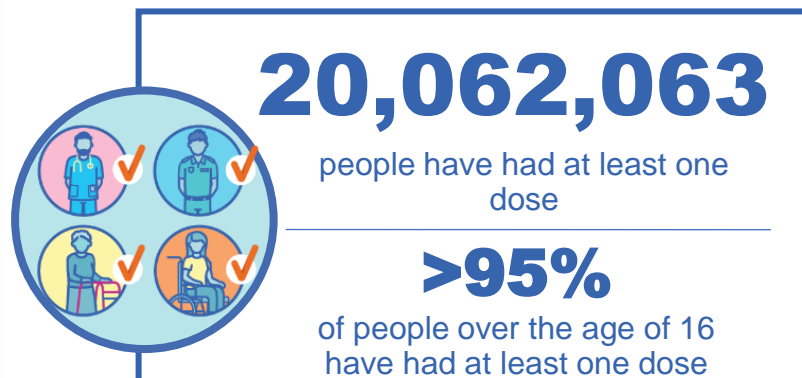
Data as at:  
26 May 2022

## Total vaccine doses



**59,028,547** total vaccine  
doses administered nationally as at 26 May

**+63,760** recorded in the last 24 hours



\*Administration state breakdown indicates state in which a vaccine was administered

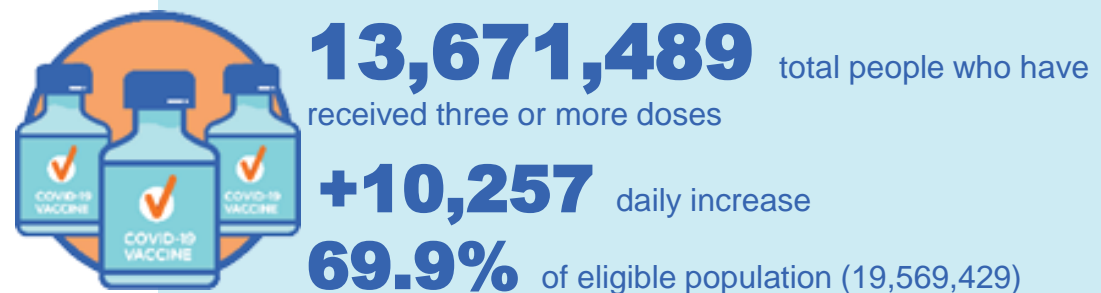
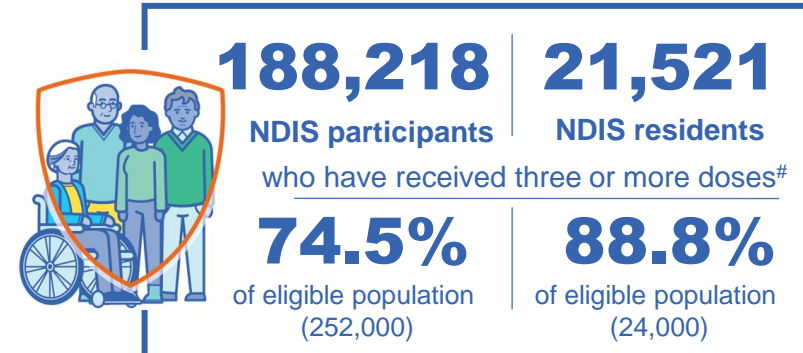
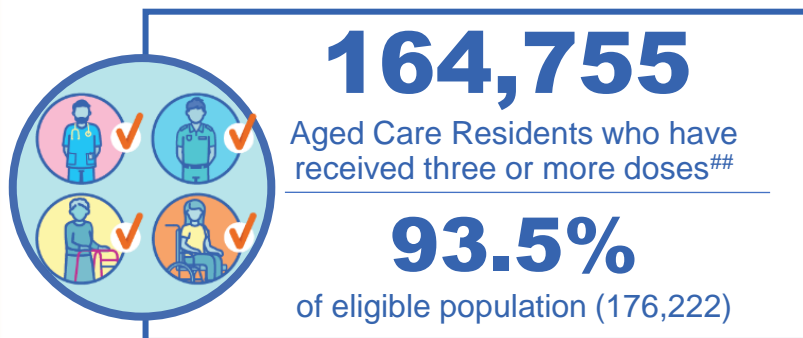
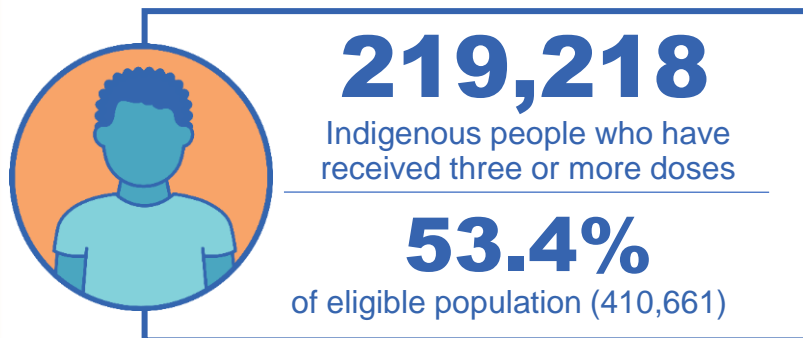
\*\*Overall dose count includes instances of more than three doses per person in a small number of cases.

Source: Australian Immunisation Register

# Booster Vaccinations

Australia's COVID-19  
Vaccine Roadmap

Data as at:  
26 May 2022



	Number of People	Daily Increase	% of Eligible
NSW	4,170,177	2,614	67.2%
VIC	3,651,099	2,449	72.1%
QLD	2,366,549	1,782	63.0%
WA	1,681,909	1,465	83.2%
SA	972,418	1,135	73.2%
TAS	312,486	266	72.4%
ACT	270,636	109	78.2%
NT	129,168	184	77.2%

\*People may belong to multiple groups and could be represented in the above breakdowns multiple times.  
# NDIS participants data as at 24 May 2022. ## Aged Care Residents data as at 26 May 2022.

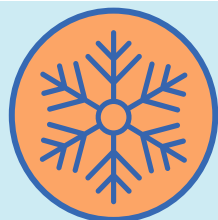
Source: Australian Immunisation Register

**117,047** doses administered to persons  
residing in other territories or with  
missing residential information

# Winter / Fourth Doses

Data as at:  
26 May 2022

Australia's COVID-19  
Vaccine Roadmap



**1,410,589** total people (16+) who have received four or more doses

**+49,152** daily increase

	Number of People 16+	Daily Increase
ACT	30,539	735
NSW	457,387	15,198
NT	6,389	214
QLD	268,316	9,416
SA	113,201	3,797
TAS	39,770	1,303
VIC	354,000	12,962
WA	134,373	5,240

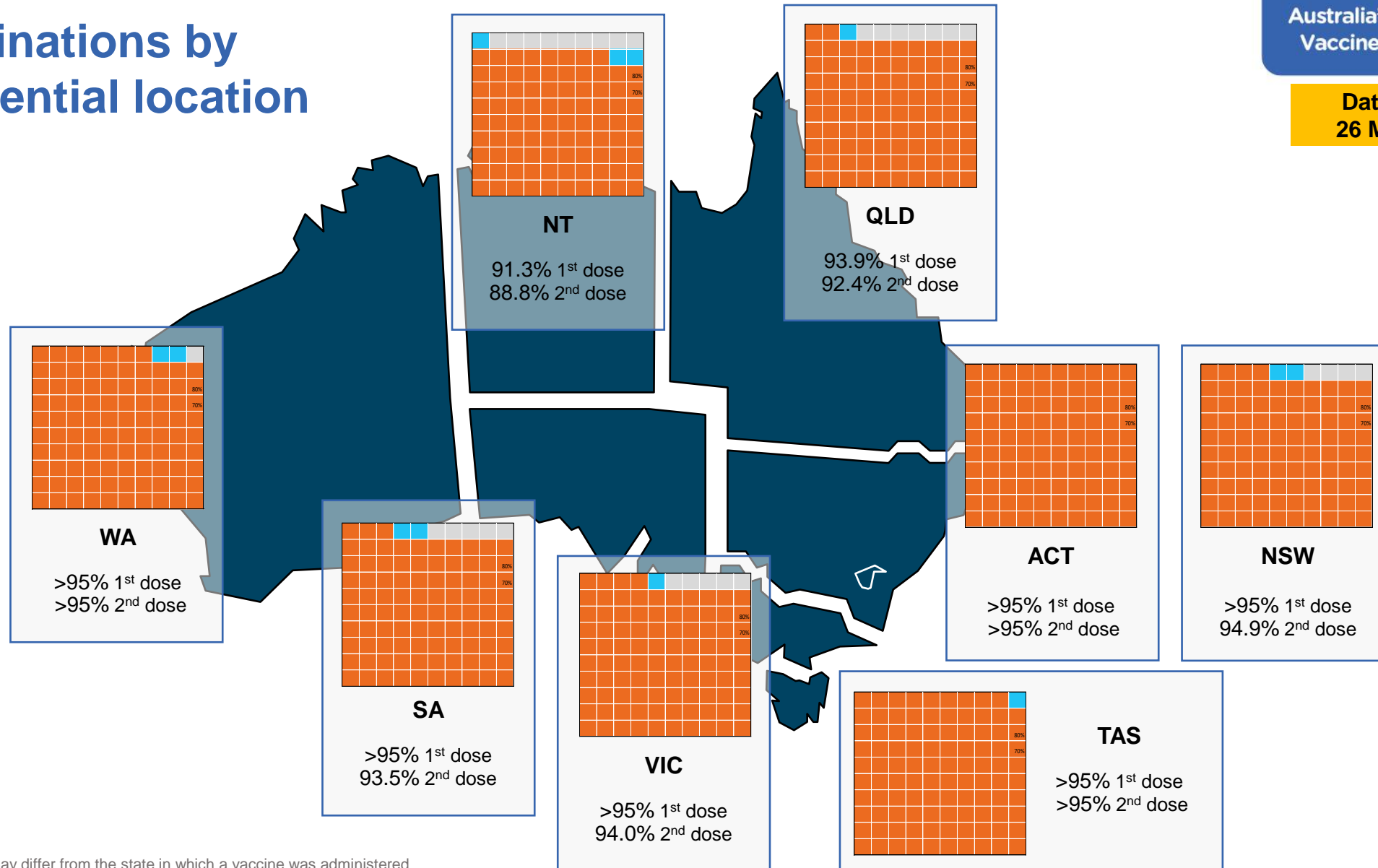
**6,614** doses administered to persons  
residing in other territories or with  
missing residential information

Source: Australian Immunisation Register

# Vaccinations by residential location

Australia's COVID-19  
Vaccine Roadmap

Data as at:  
26 May 2022



\*Residential state may differ from the state in which a vaccine was administered

# Commonwealth and Jurisdiction vaccine doses administered

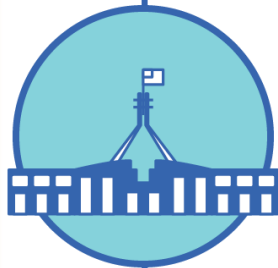
Data as at:  
26 May 2022



**59,028,547** total vaccine  
doses administered nationally as at 26 May  
**+ 63,760** recorded in the last 24 hours



**21,173,303**  
doses administered by state  
and territory facilities  
**+ 5,763**  
recorded in the last 24 hours



**37,855,244**  
doses administered by  
commonwealth facilities  
**+ 57,997**  
recorded in the last 24 hours

**36,559,042** total vaccine doses  
administered in primary care settings  
**1,296,202** total vaccine doses  
administered in aged care and disability  
settings

NSW	Jurisdictions	Commonwealth
Cumulative	5,122,785	13,181,721
Daily increase	152	18,654

VIC	Jurisdictions	Commonwealth
Cumulative	6,097,805	9,406,704
Daily increase	2,005	14,733

QLD	Jurisdictions	Commonwealth
Cumulative	3,850,333	7,313,387
Daily increase	572	11,649

WA	Jurisdictions	Commonwealth
Cumulative	2,514,770	3,983,969
Daily increase	877	6,315

TAS	Jurisdictions	Commonwealth
Cumulative	623,982	711,347
Daily increase	124	1,474

SA	Jurisdictions	Commonwealth
Cumulative	1,825,467	2,264,552
Daily increase	1,230	3,974

ACT	Jurisdictions	Commonwealth
Cumulative	793,432	751,305
Daily increase	575	873

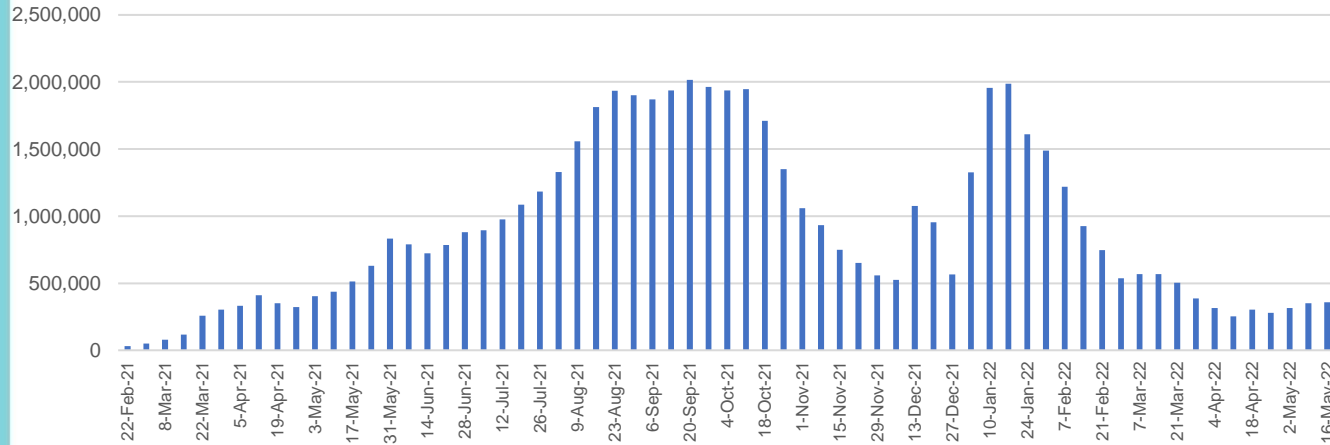
NT	Jurisdictions	Commonwealth
Cumulative	344,729	242,259
Daily increase	228	325

# Vaccine milestone charts

Data as at:  
26 May 2022

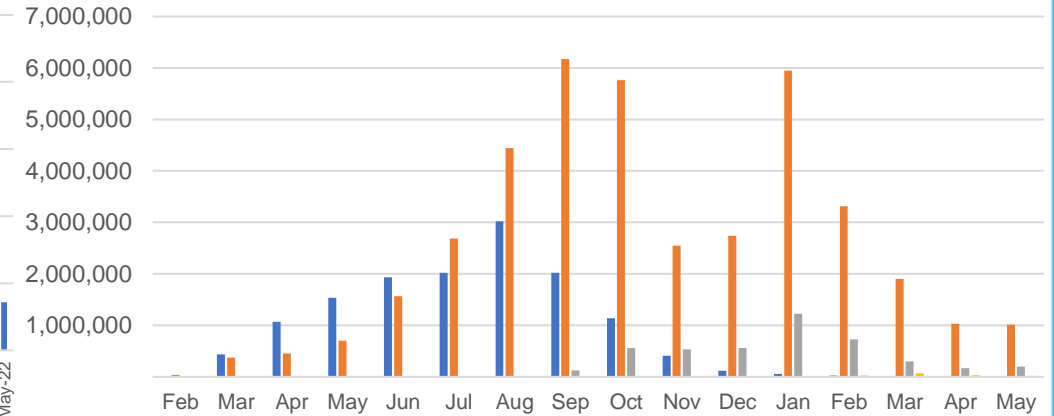
Australia's COVID-19  
Vaccine Roadmap

Doses Administered by Week

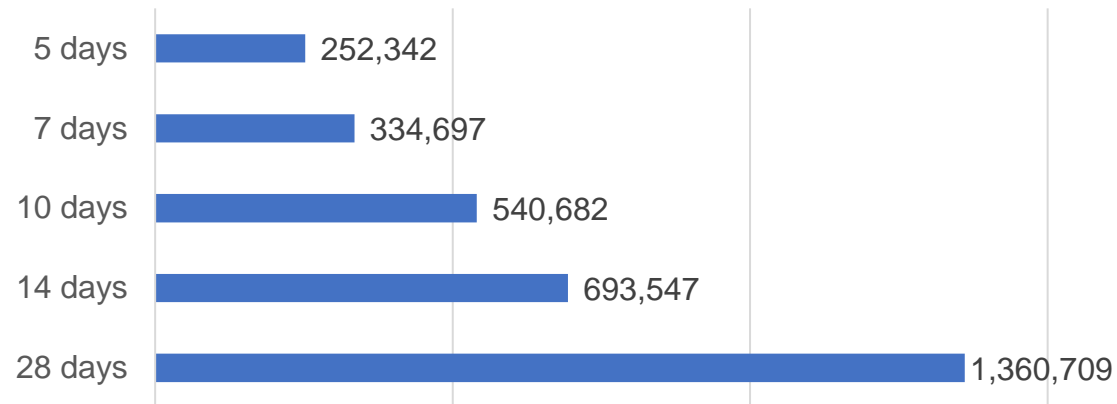


Doses by administration month and vaccine type

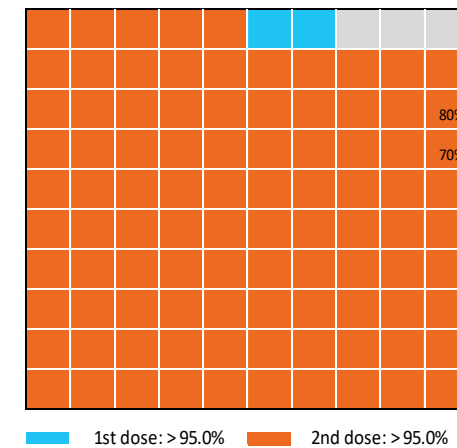
AZ - Vaxzevria Pfizer Moderna Novavax



Doses Reported



Eligible population percentage coverage



\*Each square represents 1% of the national population.  
Squares are filled as milestones are achieved.

\*Sourced from the Australian Immunisation Register.

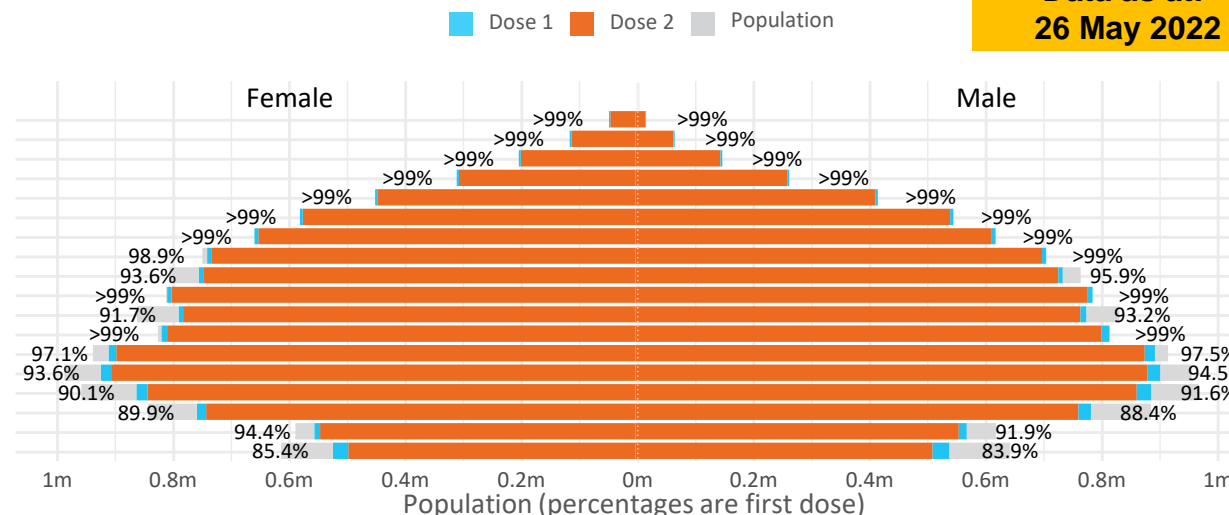
Data as at:  
26 May 2022

# Doses by age and sex

First and second doses by age and sex

	16+	50+	12-15	5-11
Dose 1	97.29% (20,062,063 doses / 20,619,959 people)	>99% (8,891,609 doses / 8,749,703 people)	84.64% (1,052,972 doses / 1,243,990 people)	52.67% (1,199,074 doses / 2,276,638 people)
Dose 2	95.68% (19,728,469 doses / 20,619,959 people)	>99% (8,784,922 doses / 8,749,703 people)	80.19% (997,617 doses / 1,243,990 people)	38.53% (877,274 doses / 2,276,638 people)

Age	Dose 1	Dose 2
95+	63,730 (>99%)	60,320 (>99%)
90-94	179,544 (>99%)	173,983 (>99%)
85-89	347,494 (>99%)	340,623 (>99%)
80-84	567,923 (>99%)	560,687 (>99%)
75-79	858,591 (>99%)	850,226 (>99%)
70-74	1,116,664 (>99%)	1,105,527 (>99%)
65-69	1,267,101 (>99%)	1,252,669 (>99%)
60-64	1,433,992 (>99%)	1,417,793 (98.7%)
55-59	1,475,927 (94.9%)	1,459,377 (93.8%)
50-54	1,580,643 (>99%)	1,563,717 (>99%)
45-49	1,551,545 (92.5%)	1,533,104 (91.4%)
40-44	1,620,896 (>99%)	1,596,897 (98.6%)
35-39	1,790,618 (97.6%)	1,758,610 (95.8%)
30-34	1,817,000 (94.5%)	1,775,374 (92.3%)
25-29	1,743,242 (91.4%)	1,695,848 (88.9%)
20-24	1,532,618 (89.5%)	1,493,036 (87.2%)
16-19	1,114,535 (93.2%)	1,090,678 (91.2%)
12-15	1,052,972 (84.6%)	997,617 (80.2%)



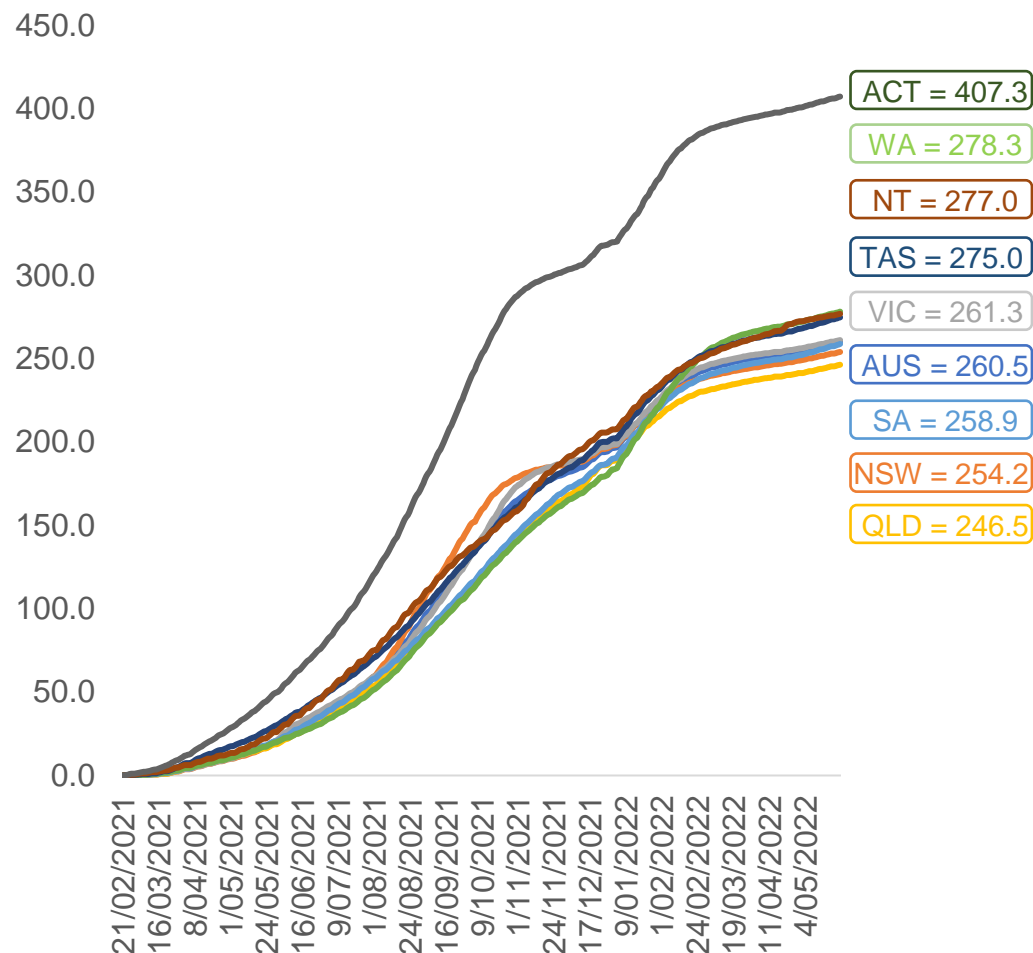
	AUS	ACT	NSW	NT	QLD	SA	TAS	VIC	WA
16 and over - dose 1	20,062,063	352,769	6,328,515	173,958	3,861,732	1,375,522	445,039	5,161,813	2,095,909
16 and over - dose 2	19,728,469	347,134	6,231,745	169,275	3,798,095	1,346,298	436,008	5,084,695	2,064,741
16 and over - population	20,619,959*	344,037	6,565,651	190,571	4,112,707	1,440,400	440,172	5,407,574	2,114,978
16 and over % with dose 1	97.29%	>99%	96.39%	91.28%	93.90%	95.50%	>99%	95.46%	>99%
16 and over % with dose 2	95.68%	>99%	94.91%	88.83%	92.35%	93.47%	>99%	94.03%	97.62%
5 to 11 - dose 1	1,199,074	31,890	357,813	13,228	208,124	84,017	28,591	326,230	141,340
5 to 11 - dose 2	877,274	26,911	266,716	8,474	146,813	61,573	22,800	239,901	99,517
5 to 11 - population	2,276,638	39,789	716,460	24,750	478,731	148,816	45,033	578,499	244,154
5 to 11 % with dose 1	52.67%	80.15%	49.94%	53.45%	43.47%	56.46%	63.49%	56.39%	57.89%
5 to 11 % with dose 2	38.53%	67.63%	37.23%	34.24%	30.67%	41.38%	50.63%	41.47%	40.76%
12 to 15 - dose 1	1,052,972	20,106	323,733	10,822	206,379	68,400	22,936	275,132	115,862
12 to 15 - dose 2	997,617	19,567	309,457	9,754	193,167	64,716	21,827	263,391	107,373
12 to 15 - population	1,243,990	19,693	390,330	13,060	270,146	82,747	26,308	308,611	132,869
12 to 15 % with dose 1	84.64%	>99%	82.94%	82.86%	76.40%	82.66%	87.18%	89.15%	87.20%
12 to 15 % with dose 2	80.19%	>99%	79.28%	74.69%	71.50%	78.21%	82.97%	85.35%	80.81%

\*National population will not equal sum of listed jurisdictions due to a small number of people counted in national population residing in some 'other' territories. Sum of state doses will not add to national total as some records are unable to be geocoded to a State or Territory.  
Doses sourced from Australian Immunisation Register, population from ABS ERP June 2020



# Vaccinations by location

Cumulative total doses administered vs eligible state populations\*

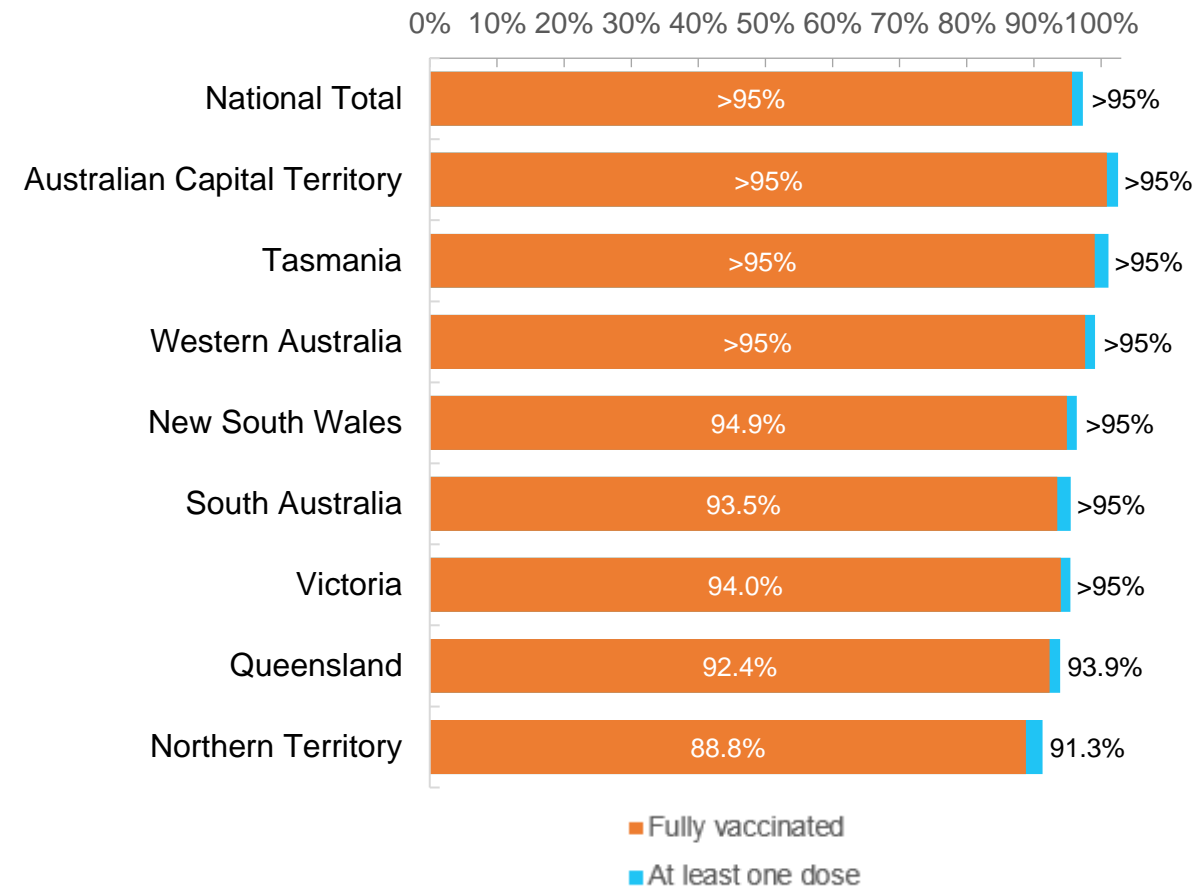


\*Not an indication of percentage vaccinated, numbers will exceed 100 due to multiple doses required per person of the population. All doses are included for those aged 12 and above, and are based on vaccination provider location.

Data as at:  
26 May 2022

Australia's COVID-19  
Vaccine Roadmap

First and Second Doses by residential location



# Aboriginal and Torres Strait Islander peoples

## Number of people vaccinated

Data as at:  
24 May 2022  
Updated weekly

Australia's COVID-19  
Vaccine Roadmap



**442,270**

people over the age of 16  
have had at least one dose

**84.9%**

of people over the age of 16  
have had at least one dose



**423,534**

people over the age of 16  
are fully vaccinated

**81.3%**

of people over the age of 16 are  
fully vaccinated



People aged 12 – 15 years

**48,377**

**42,583**

**68.3%**

At least one dose

**60.1%**

Fully vaccinated

### 178 Aboriginal community controlled health services (ACCHS)

0#

50

27

44

12

3

21

21

**ACT**

**NSW**

**NT**

**QLD**

**SA**

**TAS**

**VIC**

**WA**

Medicare Address State <sup>##</sup>	Individuals Dose 1	Individuals Dose 1 %	Individuals Dose 2	Individuals Dose 2 %
Australian Capital Territory	4,796	91.4%	4,676	89.1%
New South Wales	135,984	87.3%	132,925	85.3%
Northern Territory	41,496	89.6%	39,447	85.2%
Queensland	116,165	81.8%	110,722	77.9%
South Australia	20,003	80.4%	18,598	74.8%
Tasmania	13,954	88.8%	13,545	86.2%
Victoria	35,681	90.4%	34,902	88.4%
Western Australia	53,681	86.6%	49,865	80.5%
Unknown/Other Territories	20,510	69.5%	18,854	63.9%
<b>Totals</b>	<b>442,270</b>	<b>84.9%</b>	<b>423,534</b>	<b>81.3%</b>

Source: Australian Immunisation Register

\*Identifying as Aboriginal and Torres Strait Islander is optional and the estimated population may be under reported.

\*\*Includes all Aboriginal and Torres Strait Islander peoples who have received a vaccination, not limited to those administered in an ACCHS setting

#ACCHS in the ACT are currently operating as a Commonwealth Vaccine Clinics so not included to avoid double counting

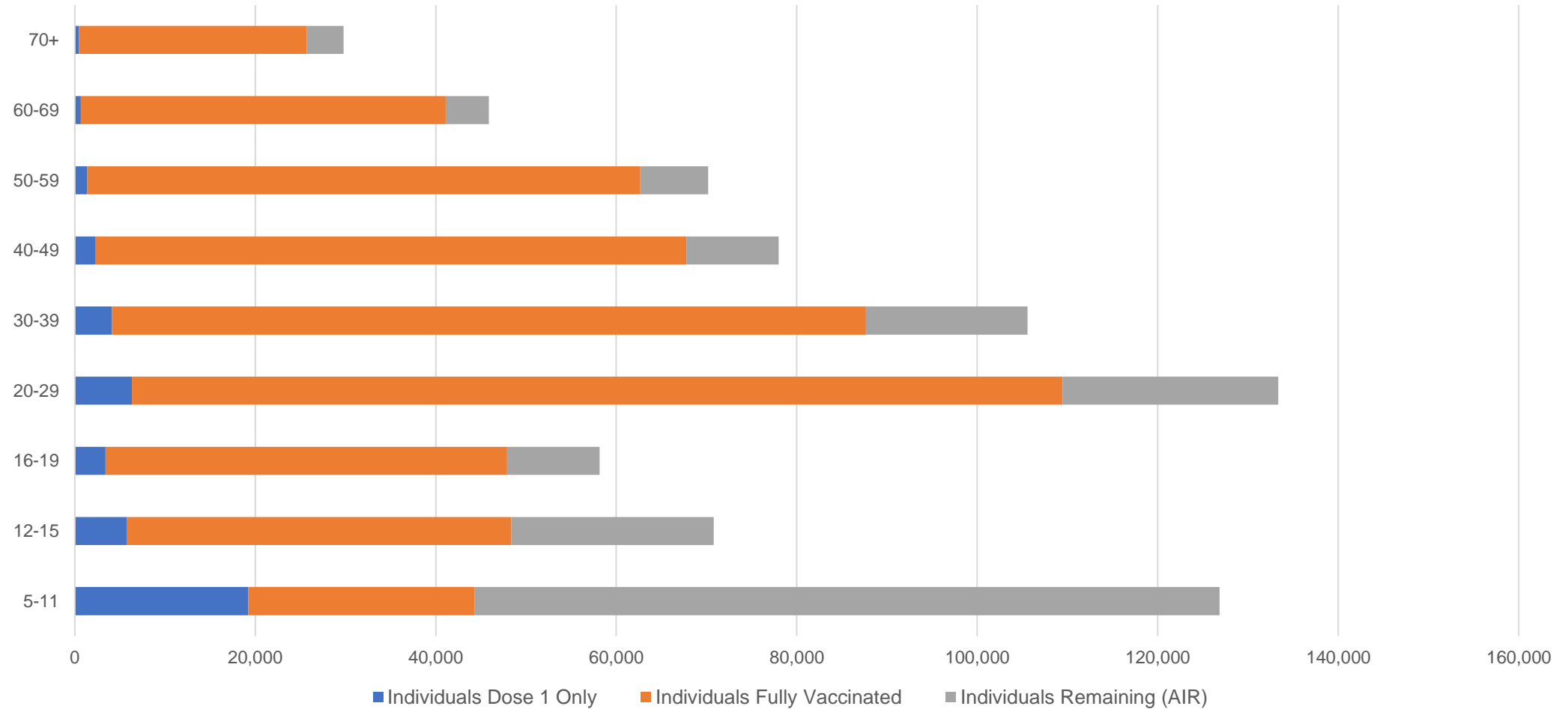
##The above table includes all identified Aboriginal and Torres Strait Islander people who are aged 16 and above by their state of residence.

# Aboriginal and Torres Strait Islander peoples

## Number of people vaccinated by age

Data as at:  
24 May 2022  
Updated weekly

Australia's COVID-19  
Vaccine Roadmap



Source: Australian Immunisation Register

# Commonwealth primary care

Data as at:  
26 May 2022

Australia's COVID-19  
Vaccine Roadmap



## Primary care vaccine administration sites

<b>5,725</b>	<b>128</b>	<b>178</b>	<b>3,598</b>
GPs	CVCs	ACCHS	Pharmacies



**36,559,042** total vaccine doses administered  
primary care settings as at 26 May  
**+ 56,367** recorded in the last 24 hours

## Primary care vaccinations by provider type

	Doses administered	Daily increase	7 day increase
General Practice* includes other Commonwealth	29,316,811	40,223	211,198
Pharmacy	7,242,231	16,144	80,458

**NSW**  
**12,617,399**  
(+17,882 daily increase)

**VIC**  
**9,079,570**  
(+13,970 daily increase)

**QLD**  
**7,031,526**  
(+10,935 daily increase)

**WA**  
**3,846,916**  
(+6,243 daily increase)

**TAS**  
**689,929**  
(+1,482 daily increase)

**SA**  
**2,184,010**  
(+4,022 daily increase)

**ACT**  
**577,686**  
(+810 daily increase)

**NT**  
**217,689**  
(+277 daily increase)

**314,317**

doses administered to persons  
residing in other territories or with  
missing residential information

\*General practice includes Commonwealth Vaccination Clinics, Aboriginal Community Health Centres, Royal Flying Doctor Service and other Commonwealth vaccination facilities

Source: Australian Immunisation Register

Data as at:  
26 May 2022

# Commonwealth aged care and disability doses administered



**1,296,202** (+ 1,630 last 24 hours)

Total vaccine doses administered in aged care and disability facilities as at 26 May

Number of doses administered as part of the Commonwealth aged and disability care rollout

**NSW**  
**565,328**  
(+545 daily increase)

**VIC**  
**243,493**  
(+485 daily increase)

**QLD**  
**206,043**  
(+227 daily increase)

**WA**  
**109,833**  
(+93 daily increase)

**TAS**  
**23,516**  
(+22 daily increase)

**SA**  
**84,851**  
(+70 daily increase)

**ACT**  
**17,638**  
(+64 daily increase)

**NT**  
**7,658**  
(<10 daily increase)

**37,842**

doses administered to persons  
residing in other territories or with  
missing residential information

\*Sourced from the Australian Immunisation Register. Includes all persons vaccinated at participating residential aged care, disability and related industry settings.

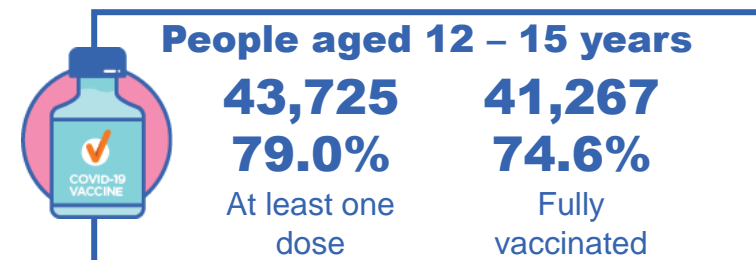
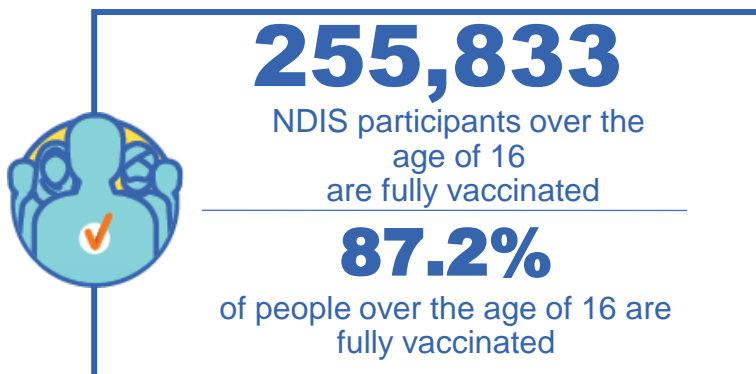
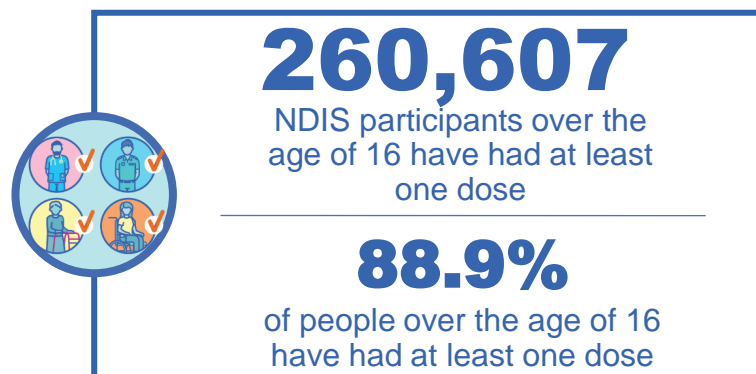
\*\*State level breakdown indicates the residential location and may not align to the state in which the vaccination occurred.

Source: Australian Immunisation Register

# National Disability Insurance Scheme (NDIS) reported vaccinations

Data as at:  
26 May 2022  
Updated weekly

Australia's COVID-19  
Vaccine Roadmap



## NDIS participant vaccinations

	People aged 16+ with at least one dose	People aged 16+ fully vaccinated	% People aged 16+ with at least one dose	% People aged 16+ fully vaccinated
ACT	4,920	4,852	90.7%	89.5%
NSW	79,886	78,583	89.0%	87.6%
NT	2,258	2,190	79.1%	76.8%
QLD	51,505	50,533	87.5%	85.9%
SA	21,307	20,800	86.9%	84.8%
TAS	6,526	6,373	88.8%	86.7%
VIC	69,309	68,130	90.0%	88.5%
WA	24,896	24,372	90.4%	88.5%
National	260,607	255,833	88.9%	87.2%

Source: Linkage between National Disability Insurance Agency data and the Australian Immunisation Register. Total NDIS participant numbers as at 28 February. Australian Immunisation Register data as at 25 May. Includes all participants regardless of residence type.

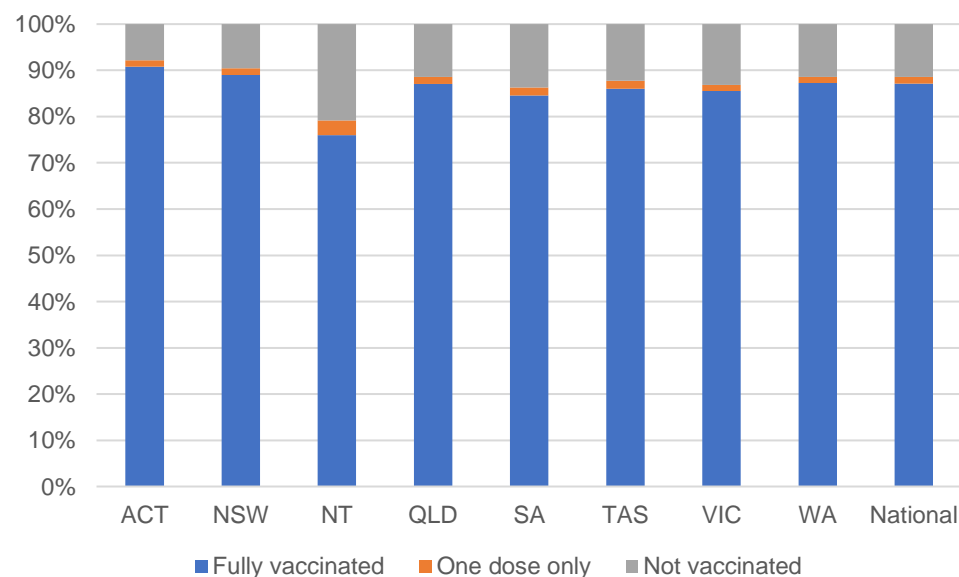
# National Disability Insurance Scheme (NDIS) reported vaccinations

Data as at:  
26 May 2022  
Updated weekly

Australia's COVID-19  
Vaccine Roadmap

NATIONAL	Total people with at least one dose	People fully vaccinated	Total number of individuals in cohort	% People with at least one dose	% People fully vaccinated
NDIS participants living in disability accommodation	20,762	20,425	23,352	88.9%	87.5%

## NDIS participants in disability and aged care accommodation



Source: Linkage between National Disability Insurance Agency data and the Australian Immunisation Register. Includes participants residing in disability accommodation only.

Source: Total NDIS participant numbers as at 28 February. Participant data as at 24 May. Australian Immunisation Register data as at 25 May. Worker data as at 26 May.

## NDIS workforce vaccinations

	NDIS workers with at least one dose	NDIS workers fully vaccinated	% NDIS workers with at least one dose	% NDIS workers fully vaccinated
NSW	126,495	120,487	98.3%	93.6%
VIC	117,331	113,969	98.3%	95.5%
QLD	70,932	69,987	97.7%	96.4%
WA	34,530	33,014	98.8%	94.4%
SA	35,910	33,756	98.6%	92.7%
TAS	10,944	10,696	99.0%	96.8%
ACT	12,301	12,277	99.7%	99.6%
NT	3,854	3,708	99.6%	95.9%
<b>TOTAL</b>	<b>412,297</b>	<b>397,894</b>	<b>98.3%</b>	<b>94.9%</b>

Source: the NDIS Commission has established a requirement for registered NDIS providers who provide intensive disability support services to report on the vaccination status of workers they employ, or otherwise engage, to deliver NDIS-funded supports and services, and who are required to be vaccinated in accordance with in-force state and territory public health orders. The statistics reflect data reported to the NDIS Commission by registered NDIS providers and should be considered indicative and subject to change

Note: Some registered NDIS providers are yet to report on the vaccination status of their workforce. The NDIS Commission is working with those providers around reporting requirements.

Remaining workers not included include those exempt from vaccination requirements, workers whose vaccination status is not yet verified by the provider (such as workers on leave) and provider reporting anomalies.



# Residential aged care vaccination rollout

Residential aged care facilities status

**176,160**

People fully vaccinated

**177,559**

People with at least one dose

Australia's COVID-19 Vaccine Roadmap

Data as at:  
26 May 2022  
Updated weekly

## Aged care resident vaccinations



## Aged care worker vaccinations

Jurisdictions	Total workers with at least one dose	Workers fully vaccinated	% Workers with at least one dose	% Workers fully vaccinated
NSW	77,045	77,037	99.8%	99.8%
VIC	68,568	68,567	98.8%	98.8%
QLD	47,850	47,845	99.5%	99.4%
SA	27,008	26,994	99.2%	99.1%
WA	24,625	24,621	100.0%	100.0%
TAS	7,598	7,596	100.0%	100.0%
NT	882	882	100.0%	100.0%
ACT	2,943	2,943	100.0%	100.0%
Total	256,519	256,485	99.4%	99.4%

Source: My Aged Care Portal vaccination progress

\*Status updates are provided by facilities at least once per week. Reporting is updated Monday to Friday to encompass different facility updates being made on different days.

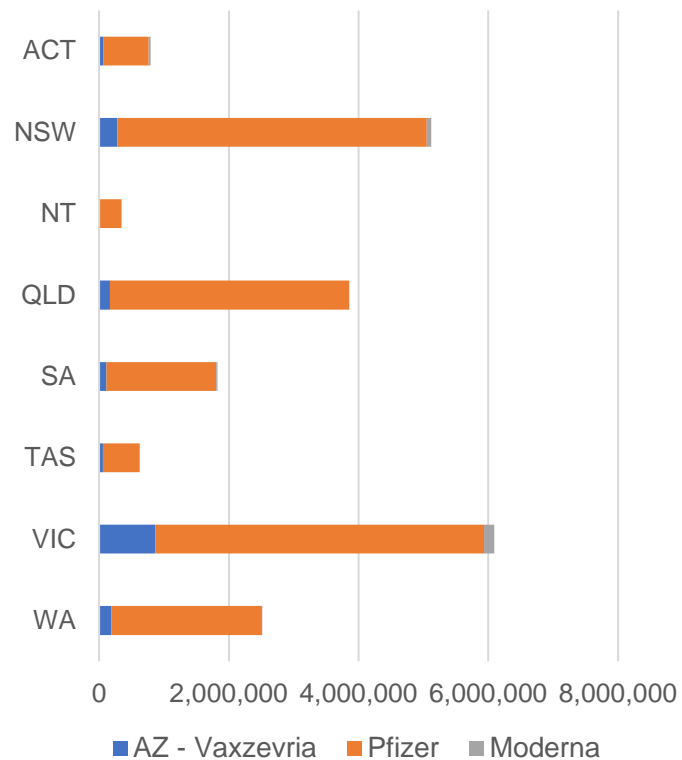
Data is sourced directly from Aged Care Service Providers and is not drawn or closely aligned with data from AIR due to inconsistencies and potential lags in uploading of records.



Data as at:  
26 May 2022

## Jurisdiction administered

Total vaccine doses administered in State and Territory clinics as at 26 May



**21,173,303** total vaccine doses administered  
in State and Territory clinics as at 26 May  
+ **5,763** recorded in the last 24 hours  
+ **35,802** recorded in the last 7 days

**NSW**  
**5,122,785**  
(+152 daily  
increase)

**VIC**  
**6,097,805**  
(+2,005 daily  
increase)

**QLD**  
**3,850,333**  
(+572 daily  
increase)

**WA**  
**2,514,770**  
(+877 daily  
increase)

**TAS**  
**623,982**  
(+124 daily  
increase)

**SA**  
**1,825,467**  
(+1,230 daily  
increase)

**ACT**  
**793,432**  
(+575 daily  
increase)

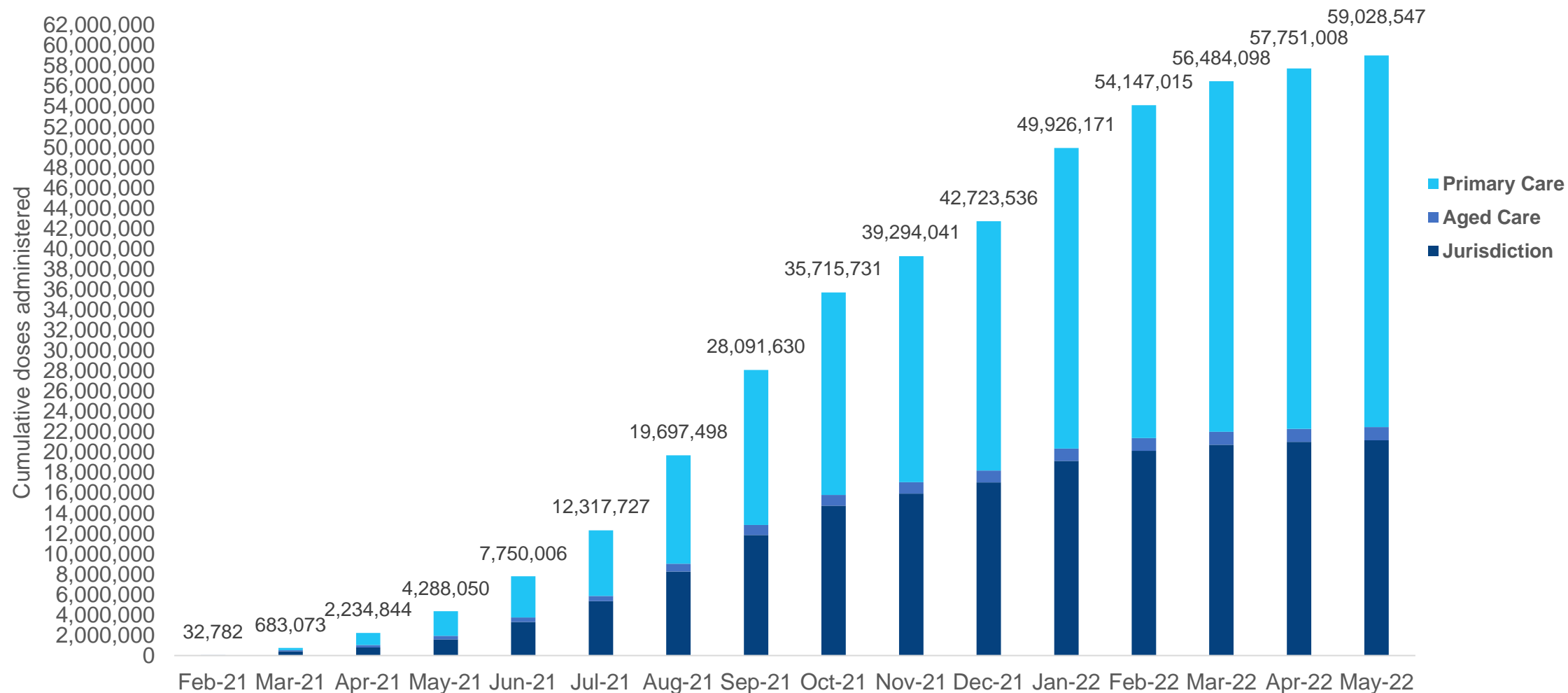
**NT**  
**344,729**  
(+228 daily  
increase)

\*Sourced from the Australian Immunisation Register. Numbers are calculated as difference in daily cumulative reported numbers to allow for historical corrections.

Source: Australian Immunisation Register

# Cumulative doses administered by channel

Data as at:  
26 May 2022



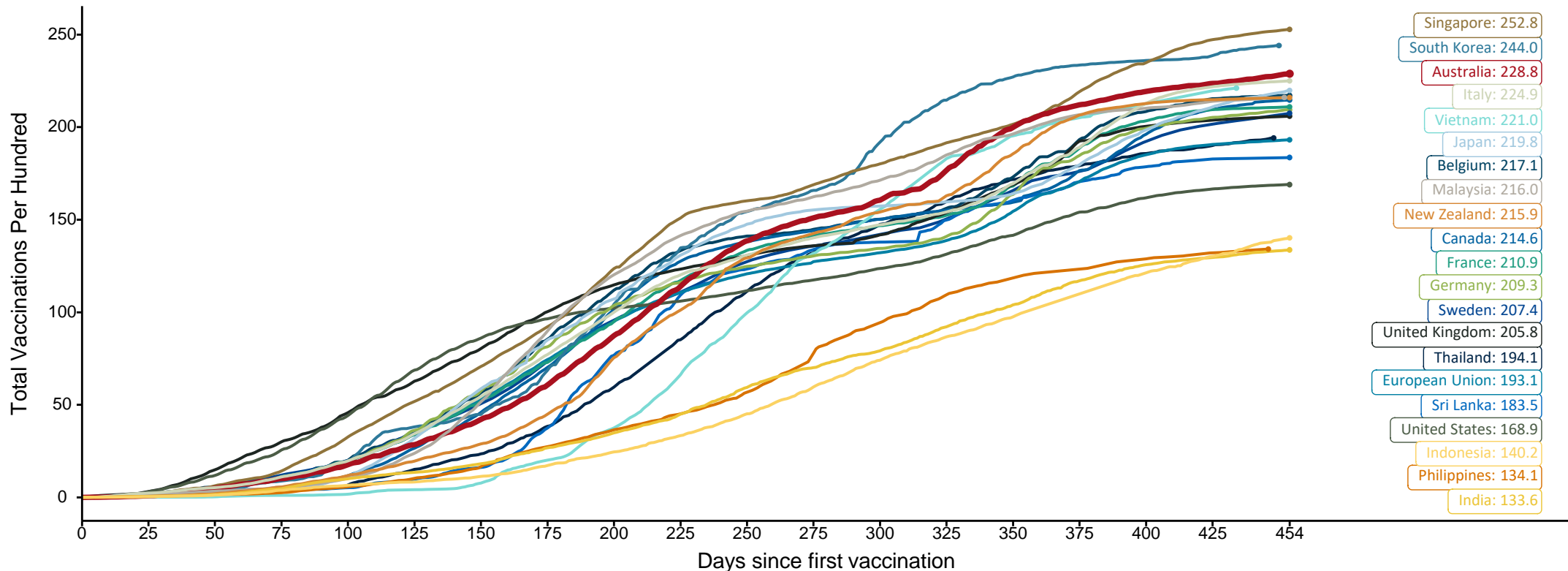
Source: Australian Immunisation Register

# Doses at equivalent stages of rollout (Day 454)

Data as at:  
22 May 2022  
Updated weekly

The x-axis is truncated at the length of Australia's vaccination program. Countries with intermittent reporting have had their doses per 100 imputed to Australia's current stage of rollout. Israel excluded as it is beyond scale of the graph

Cumulative doses administered (22 May): **58,784,623**

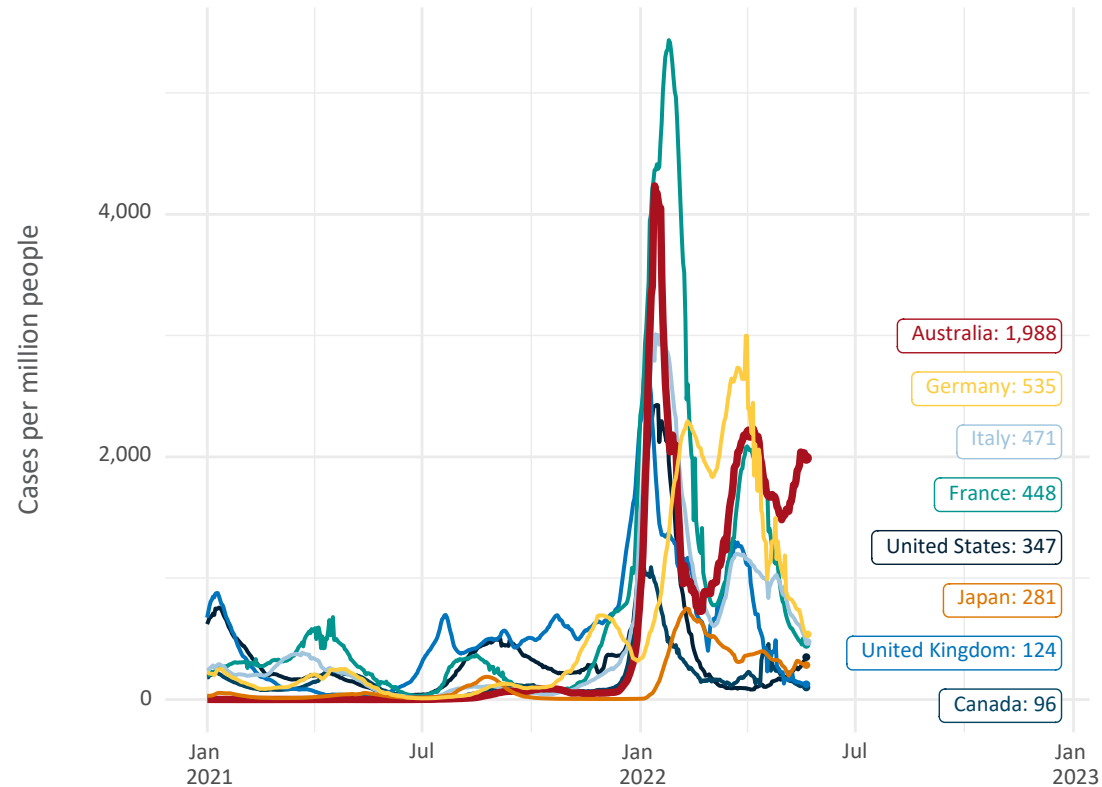


Note: From 11 January 2022, data for Australia includes all doses administered to people 5 and over. Prior to 11 January, data was for 12 and over.  
Source: Department of Health (Australia), Our World in Data (international)  
Latest data: 22 May

# International data – COVID-19

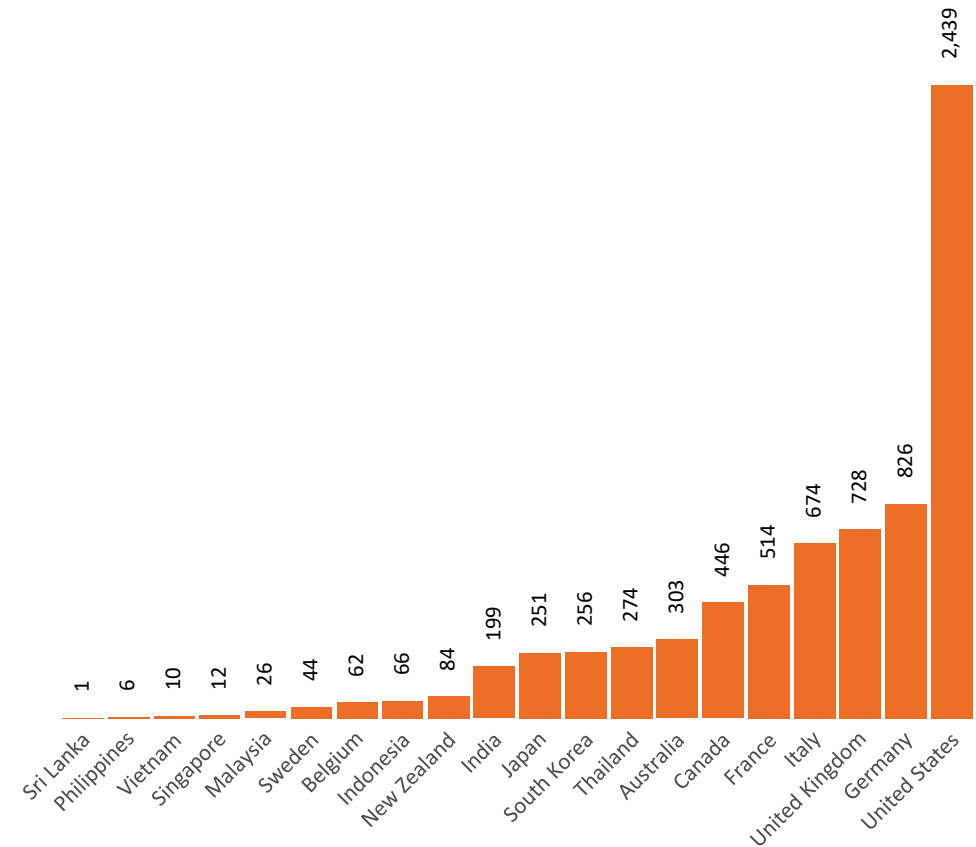
Data as at:  
22 May 2022  
Updated weekly

New daily cases per million since 2021, Australia and G7 countries  
Smoothed - 7 day average



Source: OWID  
Data downloaded: 23 May 2022 10:09  
Latest data: 22 May 2022

COVID-19 deaths in past 7 days - Australia and select countries



Source: OWID  
Data downloaded: 23 May 2022 10:09  
Latest data: 22 May 2022

# Pandemic Response Payments

Australia's COVID-19  
Vaccine Roadmap

Data as at midnight:  
22 May 2022 (updated weekly)



**2.38 million**

People have received at least one  
COVID Disaster Payment  
(including ISP200)

**8.12 million**

Claims granted across  
three different payments

**\$14.54 billion**

Paid Out as at 22 May 2022



Claims Received Digitally

**93%**

Three payments available:

**COVID Disaster Payment**

assisting during a lockdown event  
in a Commonwealth hotspot.

**Income Support Payment \$200**

for income support recipients who  
lost at least 8 hours of work.

**Pandemic Leave Disaster**

for those who have to self-isolate,  
quarantine or care.

For more information visit:

[www.servicesaustralia.gov.au](http://www.servicesaustralia.gov.au)



**COVID Disaster Payment:** 5.89 million claims received - 2.19 million individuals paid a total of \$12.59 billion.

**\$200 Income Support Payment:** 353,000 claims received - 183,000 individuals paid a total of \$268.92 million.

**Pandemic Leave Disaster Payment:** 2.40 million claims received - 1.43 million individuals paid a total of \$1.67 billion.

## COVID-19 DISASTER PAYMENTS

