



**Australian Government**  
**Operation COVID Shield**

# COVID-19 Vaccine Roll-out

26 May 2022

Data as at:  
25 May 2022

## Total vaccine doses



**58,964,787** total vaccine  
doses administered nationally as at 25 May  
**+62,285** recorded in the last 24 hours



**20,060,488**

people have had at least one  
dose

**>95%**

of people over the age of 16  
have had at least one dose



**19,727,009**

people are fully vaccinated

**>95%**

of people over the age of 16 are  
fully vaccinated



**13,661,232**

people over the age of 16  
who have received three or  
more doses

**NSW**  
**18,285,700**  
(+18,827 daily  
increase)

**VIC**  
**15,487,771**  
(+15,380 daily  
increase)

**QLD**  
**11,151,499**  
(+12,066 daily  
increase)

**WA**  
**6,491,547**  
(+6,819 daily  
increase)

**TAS**  
**1,333,731**  
(+1,600 daily  
increase)

**SA**  
**4,084,815**  
(+5,323 daily  
increase)

**ACT**  
**1,543,289**  
(+1,735 daily  
increase)

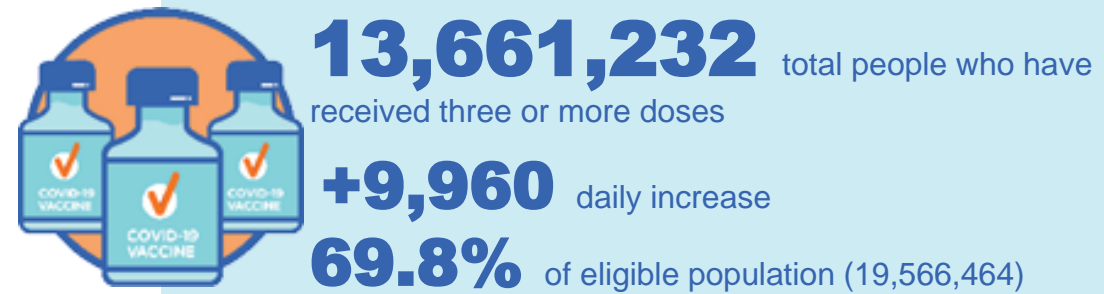
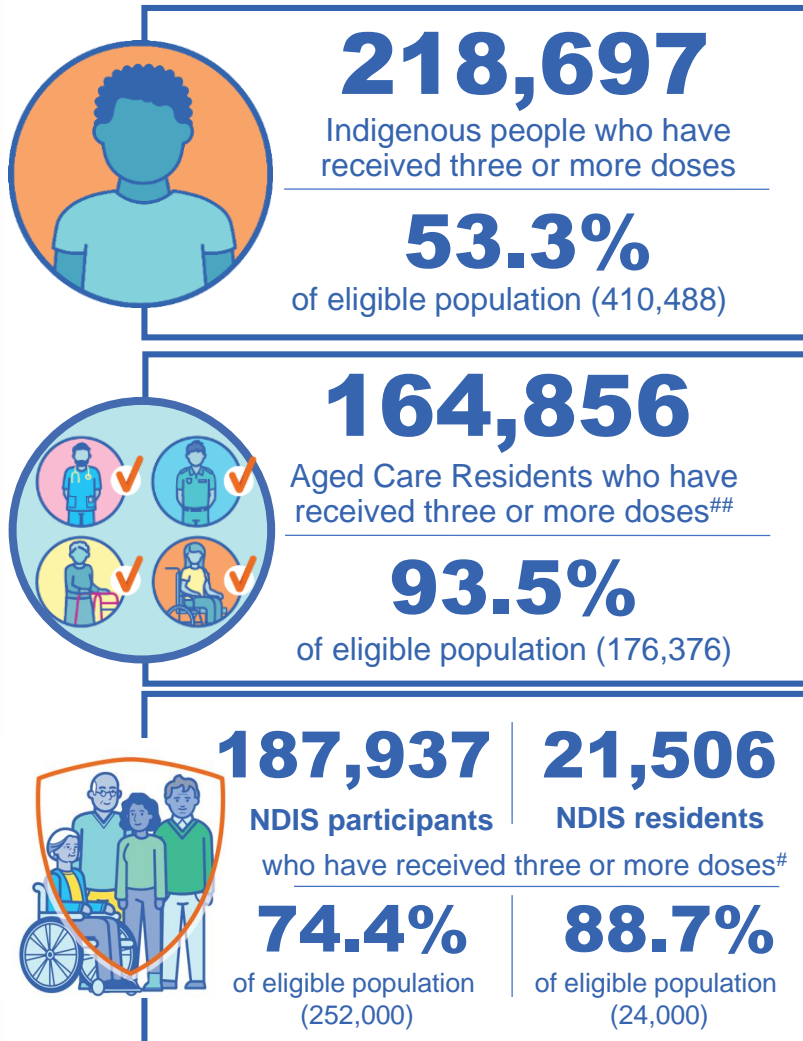
**NT**  
**586,435**  
(+535 daily  
increase)

\*Administration state breakdown indicates state in which a vaccine was administered

\*\*Overall dose count includes instances of more than three doses per person in a small number of cases.

Source: Australian Immunisation Register

## Booster Vaccinations



Data as at:  
25 May 2022

	Number of People	Daily Increase	% of Eligible
NSW	4,167,563	2,701	67.1%
VIC	3,648,650	2,256	72.1%
QLD	2,364,767	1,993	62.9%
WA	1,680,444	1,317	83.2%
SA	971,283	949	73.1%
TAS	312,220	237	72.3%
ACT	270,527	178	78.2%
NT	128,984	152	77.1%

\*People may belong to multiple groups and could be represented in the above breakdowns multiple times.  
# NDIS participants data as at 23 May 2022. ## Aged Care Residents data as at 25 May 2022.

Source: Australian Immunisation Register

**116,794** doses administered to persons residing in other territories or with missing residential information

# Winter / Fourth Doses

Data as at:  
25 May 2022

Australia's COVID-19  
Vaccine Roadmap



**1,361,437** total people (16+) who have received four or more doses

**+48,030** daily increase

	Number of People 16+	Daily Increase
ACT	29,804	888
NSW	442,189	15,129
NT	6,175	257
QLD	258,900	9,127
SA	109,404	4,104
TAS	38,467	1,304
VIC	341,038	11,954
WA	129,133	4,995

**6,327** doses administered to persons  
residing in other territories or with  
missing residential information

Source: Australian Immunisation Register

# Vaccinations by residential location

Australia's COVID-19 Vaccine Roadmap

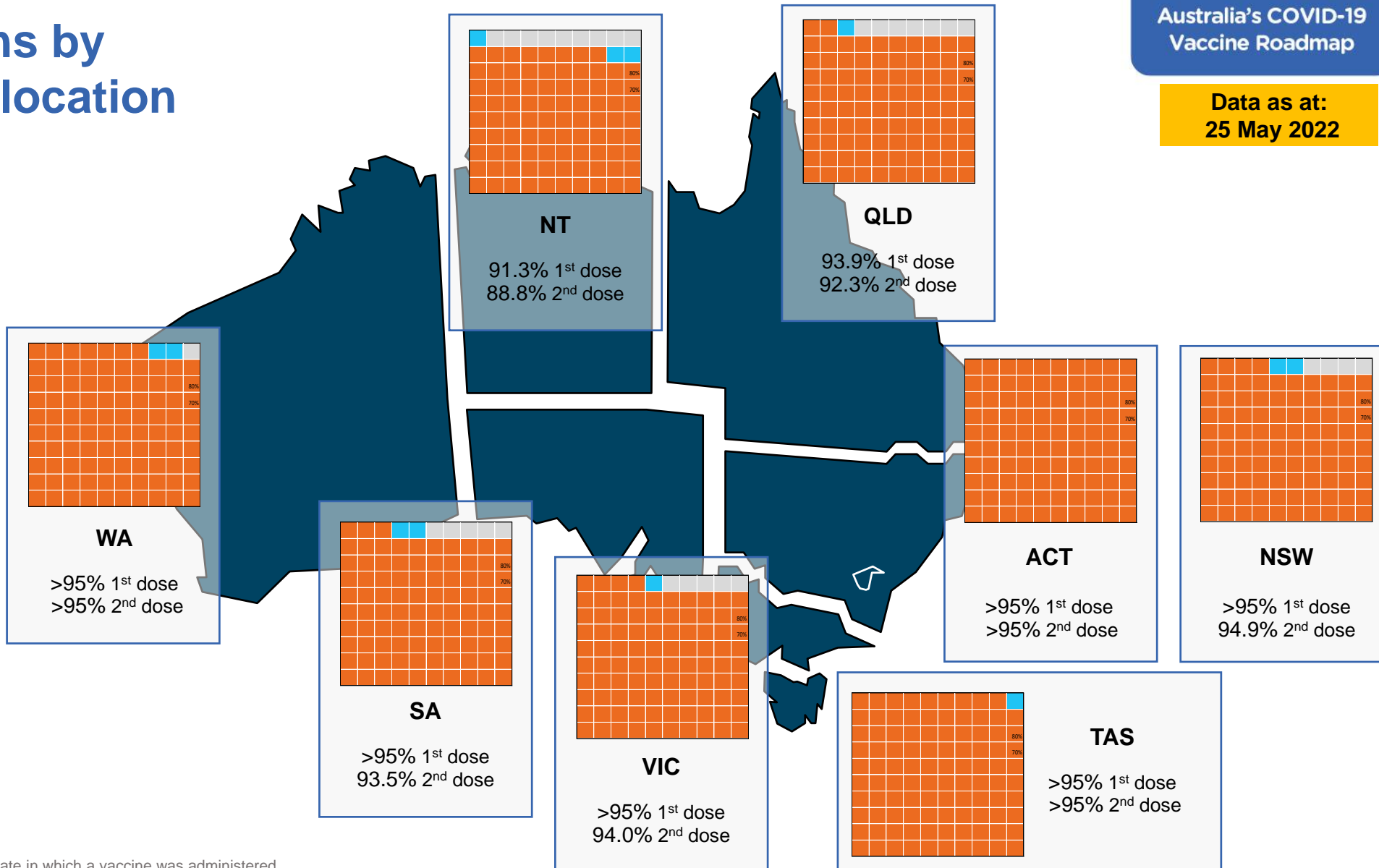
Data as at:  
25 May 2022

## First doses

Age	Today	4 weeks ago	8 weeks ago
16+	>95%	>95%	>95%
50+	>95%	>95%	>95%
70+	>95%	>95%	>95%

## Fully vaccinated

Age	Today	4 weeks ago	8 weeks ago
16+	>95%	>95%	>95%
50+	>95%	>95%	>95%
70+	>95%	>95%	>95%



\*Residential state may differ from the state in which a vaccine was administered

# Commonwealth and Jurisdiction vaccine doses administered

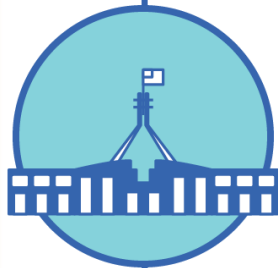
Data as at:  
25 May 2022



**58,964,787** total vaccine  
doses administered nationally as at 25 May  
**+ 62,285** recorded in the last 24 hours



**21,167,540**  
doses administered by state  
and territory facilities  
**+ 6,468**  
recorded in the last 24 hours



**37,797,247**  
doses administered by  
commonwealth facilities  
**+ 55,817**  
recorded in the last 24 hours

**36,502,675** total vaccine doses  
administered in primary care settings  
**1,294,572** total vaccine doses  
administered in aged care and disability  
settings

NSW	Jurisdictions	Commonwealth
Cumulative	5,122,633	13,163,067
Daily increase	1,146	17,681

VIC	Jurisdictions	Commonwealth
Cumulative	6,095,800	9,391,971
Daily increase	1,628	13,752

QLD	Jurisdictions	Commonwealth
Cumulative	3,849,761	7,301,738
Daily increase	726	11,340

WA	Jurisdictions	Commonwealth
Cumulative	2,513,893	3,977,654
Daily increase	881	5,938

TAS	Jurisdictions	Commonwealth
Cumulative	623,858	709,873
Daily increase	165	1,435

SA	Jurisdictions	Commonwealth
Cumulative	1,824,237	2,260,578
Daily increase	991	4,332

ACT	Jurisdictions	Commonwealth
Cumulative	792,857	750,432
Daily increase	723	1,012

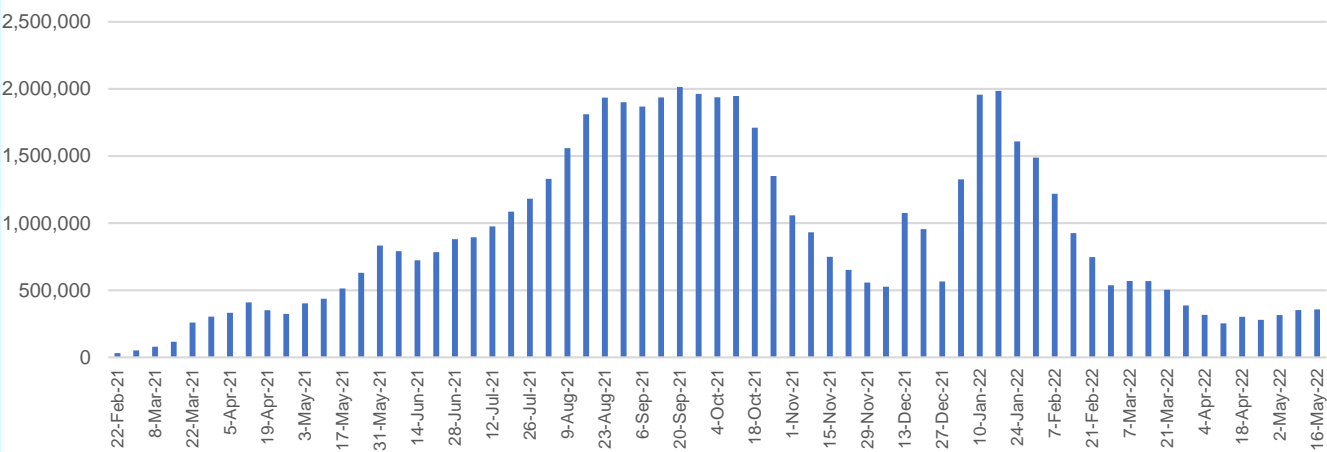
NT	Jurisdictions	Commonwealth
Cumulative	344,501	241,934
Daily increase	208	327

# Vaccine milestone charts

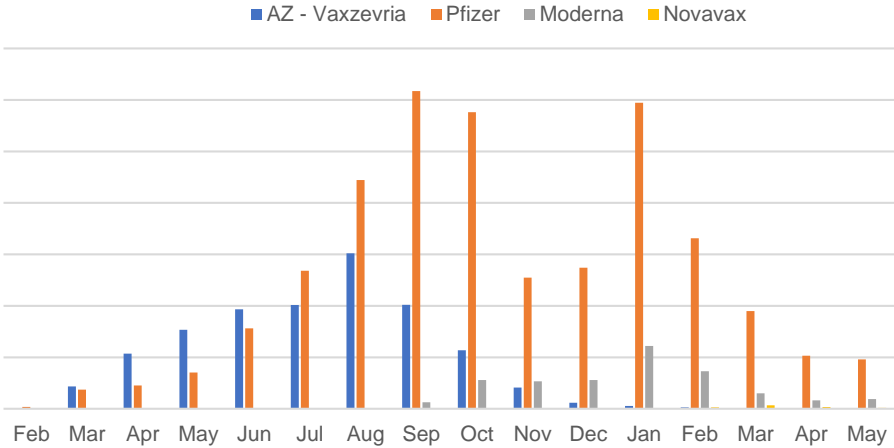
Data as at:  
25 May 2022

Australia's COVID-19  
Vaccine Roadmap

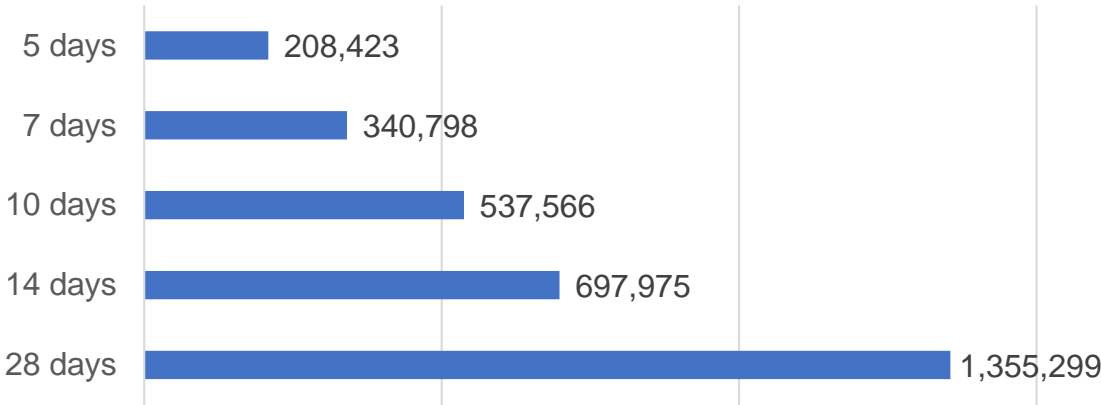
Doses Administered by Week



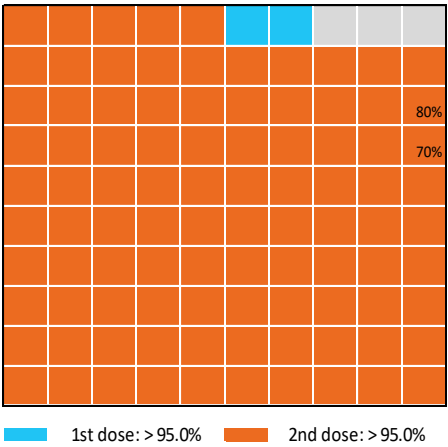
Doses by administration month and vaccine type



Doses Reported



Eligible population percentage coverage



\*Each square represents 1% of the national population.  
Squares are filled as milestones are achieved.

\*Sourced from the Australian Immunisation Register.

# Doses by age and sex

First and second doses by age and sex

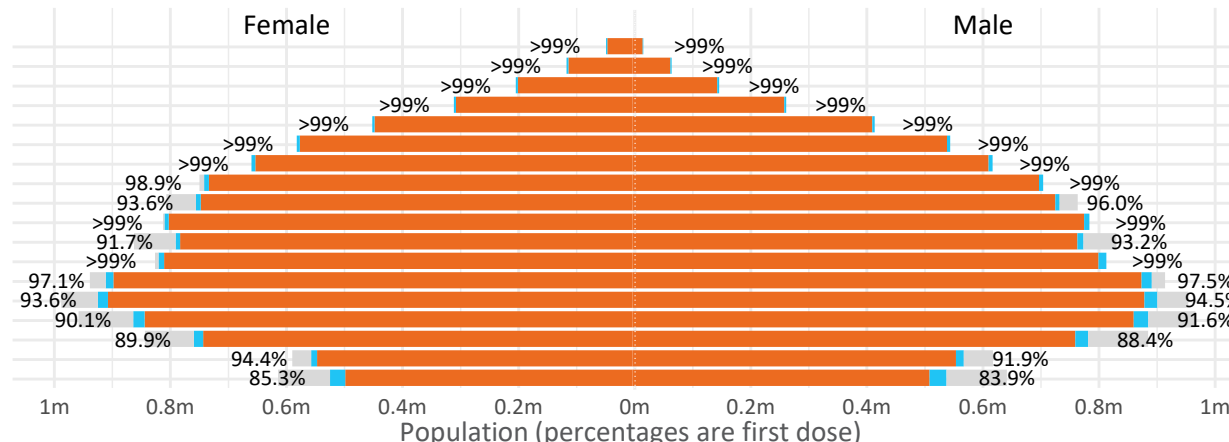
Australia's COVID-19  
Vaccine Roadmap

Data as at:  
25 May 2022

Age	Dose 1	Dose 2
95+	63,657 (>99%)	60,250 (>99%)
90-94	179,477 (>99%)	173,907 (>99%)
85-89	347,378 (>99%)	340,500 (>99%)
80-84	567,758 (>99%)	560,512 (>99%)
75-79	858,390 (>99%)	850,020 (>99%)
70-74	1,116,578 (>99%)	1,105,454 (>99%)
65-69	1,266,957 (>99%)	1,252,536 (>99%)
60-64	1,433,910 (>99%)	1,417,714 (98.7%)
55-59	1,475,955 (94.9%)	1,459,420 (93.8%)
50-54	1,580,412 (>99%)	1,563,497 (>99%)
45-49	1,551,353 (92.5%)	1,532,890 (91.4%)
40-44	1,620,774 (>99%)	1,596,800 (98.6%)
35-39	1,790,501 (97.6%)	1,758,522 (95.8%)
30-34	1,816,845 (94.4%)	1,775,239 (92.3%)
25-29	1,743,218 (91.4%)	1,695,829 (88.9%)
20-24	1,532,571 (89.5%)	1,493,045 (87.2%)
16-19	1,114,754 (93.2%)	1,090,874 (91.2%)
12-15	1,052,802 (84.6%)	997,466 (80.2%)

	16+	50+	12-15	5-11
Dose 1	97.29% (20,060,488 doses / 20,619,959 people)	>99% (8,890,472 doses / 8,749,703 people)	84.63% (1,052,802 doses / 1,243,990 people)	52.68% (1,199,352 doses / 2,276,638 people)
Dose 2	95.67% (19,727,009 doses / 20,619,959 people)	>99% (8,783,810 doses / 8,749,703 people)	80.18% (997,466 doses / 1,243,990 people)	38.49% (876,352 doses / 2,276,638 people)

Dose 1 Dose 2 Population



	AUS	ACT	NSW	NT	QLD	SA	TAS	VIC	WA
16 and over - dose 1	20,060,488	352,764	6,328,249	173,959	3,861,558	1,375,371	444,993	5,161,358	2,095,670
16 and over - dose 2	19,727,009	347,131	6,231,584	169,265	3,797,920	1,346,126	435,955	5,084,272	2,064,487
16 and over - population	20,619,959*	344,037	6,565,651	190,571	4,112,707	1,440,400	440,172	5,407,574	2,114,978
16 and over % with dose 1	97.29%	>99%	96.38%	91.28%	93.89%	95.49%	>99%	95.45%	>99%
16 and over % with dose 2	95.67%	>99%	94.91%	88.82%	92.35%	93.46%	>99%	94.02%	97.61%
5 to 11 - dose 1	1,199,352	31,897	357,884	13,235	208,191	84,055	28,611	326,280	141,364
5 to 11 - dose 2	876,352	26,897	266,398	8,443	146,672	61,538	22,808	239,654	99,382
5 to 11 - population	2,276,638	39,789	716,460	24,750	478,731	148,816	45,033	578,499	244,154
5 to 11 % with dose 1	52.68%	80.17%	49.95%	53.47%	43.49%	56.48%	63.53%	56.40%	57.90%
5 to 11 % with dose 2	38.49%	67.60%	37.18%	34.11%	30.64%	41.35%	50.65%	41.43%	40.70%
12 to 15 - dose 1	1,052,802	20,097	323,733	10,822	206,360	68,370	22,929	275,089	115,822
12 to 15 - dose 2	997,466	19,564	309,444	9,746	193,151	64,690	21,820	263,360	107,339
12 to 15 - population	1,243,990	19,693	390,330	13,060	270,146	82,747	26,308	308,611	132,869
12 to 15 % with dose 1	84.63%	>99%	82.94%	82.86%	76.39%	82.63%	87.16%	89.14%	87.17%
12 to 15 % with dose 2	80.18%	>99%	79.28%	74.62%	71.50%	78.18%	82.94%	85.34%	80.79%

\*National population will not equal sum of listed jurisdictions due to a small number of people counted in national population residing in some 'other' territories. Sum of state doses will not add to national total as some records are unable to be geocoded to a State or Territory.  
Doses sourced from Australian Immunisation Register, population from ABS ERP June 2020

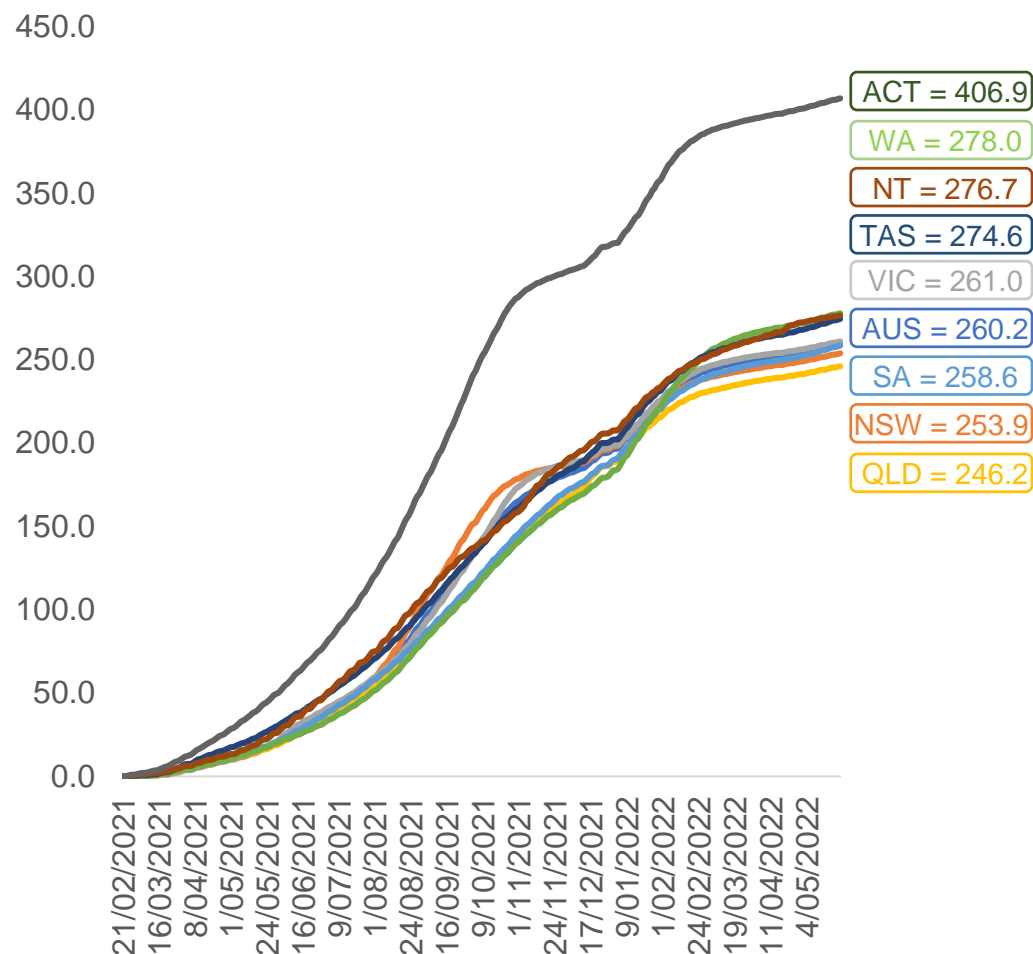


# Vaccinations by location

Data as at:  
25 May 2022

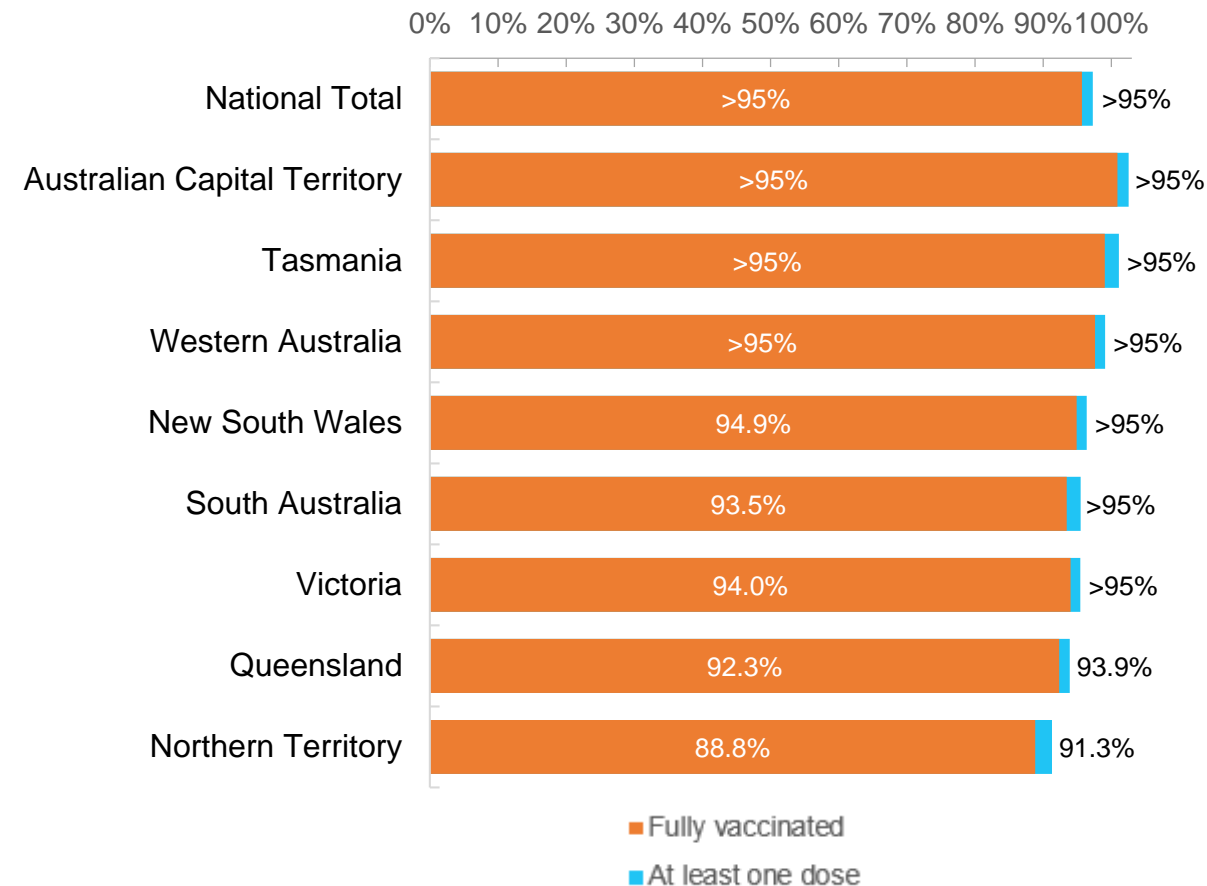
Australia's COVID-19  
Vaccine Roadmap

Cumulative total doses administered vs eligible state populations\*



\*Not an indication of percentage vaccinated, numbers will exceed 100 due to multiple doses required per person of the population.  
All doses are included for those aged 12 and above, and are based on vaccination provider location.

First and Second Doses by residential location



# Aboriginal and Torres Strait Islander peoples

## Number of people vaccinated

Data as at:  
24 May 2022  
Updated weekly

Australia's COVID-19  
Vaccine Roadmap



**442,270**

people over the age of 16  
have had at least one dose

**84.9%**

of people over the age of 16  
have had at least one dose



**423,534**

people over the age of 16  
are fully vaccinated

**81.3%**

of people over the age of 16 are  
fully vaccinated



People aged 12 – 15 years

**48,377**

**42,583**

**68.3%**

At least one dose

**60.1%**

Fully vaccinated

### 178 Aboriginal community controlled health services (ACCHS)

0#

50

27

44

12

3

21

21

**ACT**

**NSW**

**NT**

**QLD**

**SA**

**TAS**

**VIC**

**WA**

Medicare Address State <sup>##</sup>	Individuals Dose 1	Individuals Dose 1 %	Individuals Dose 2	Individuals Dose 2 %
Australian Capital Territory	4,796	91.4%	4,676	89.1%
New South Wales	135,984	87.3%	132,925	85.3%
Northern Territory	41,496	89.6%	39,447	85.2%
Queensland	116,165	81.8%	110,722	77.9%
South Australia	20,003	80.4%	18,598	74.8%
Tasmania	13,954	88.8%	13,545	86.2%
Victoria	35,681	90.4%	34,902	88.4%
Western Australia	53,681	86.6%	49,865	80.5%
Unknown/Other Territories	20,510	69.5%	18,854	63.9%
<b>Totals</b>	<b>442,270</b>	<b>84.9%</b>	<b>423,534</b>	<b>81.3%</b>

Source: Australian Immunisation Register

\*Identifying as Aboriginal and Torres Strait Islander is optional and the estimated population may be under reported.

\*\*Includes all Aboriginal and Torres Strait Islander peoples who have received a vaccination, not limited to those administered in an ACCHS setting

#ACCHS in the ACT are currently operating as a Commonwealth Vaccine Clinics so not included to avoid double counting

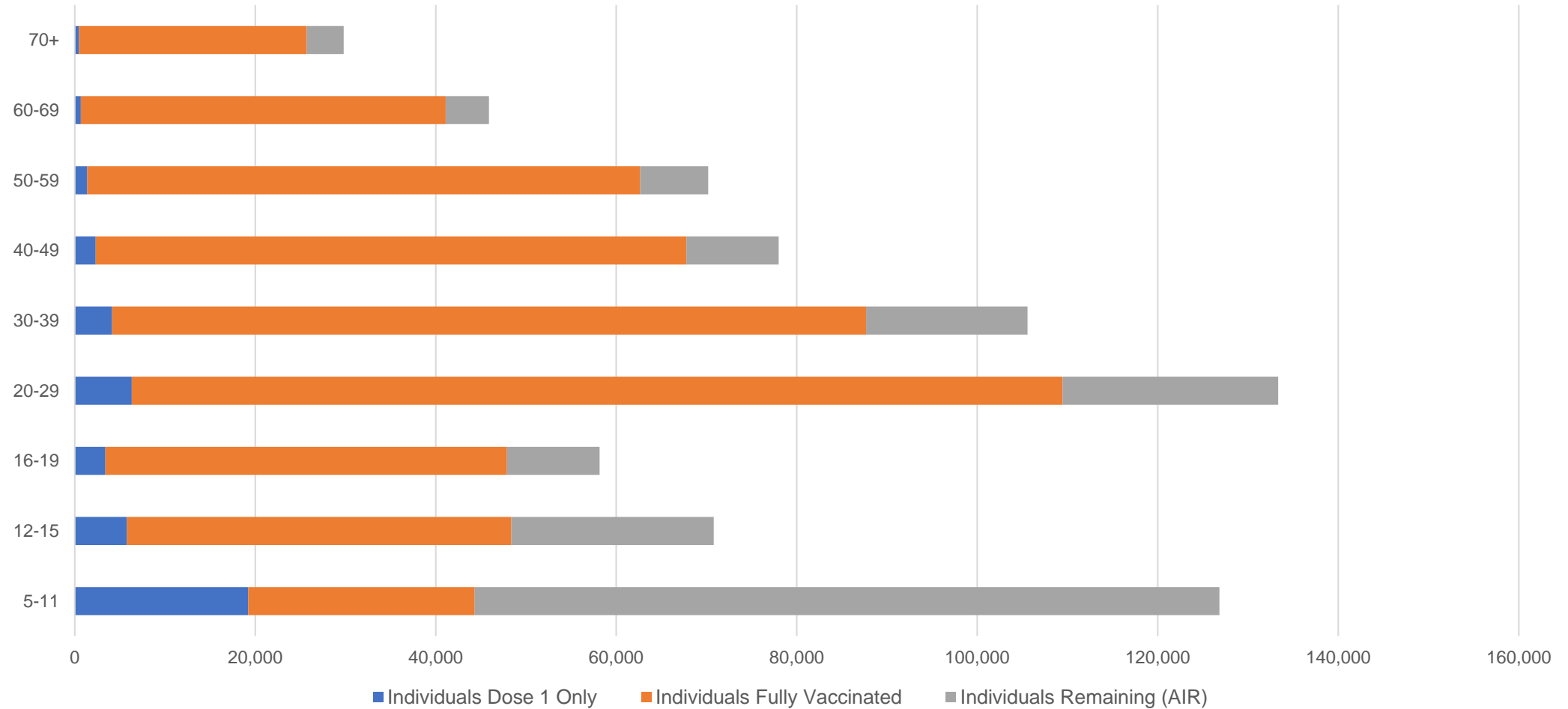
##The above table includes all identified Aboriginal and Torres Strait Islander people who are aged 16 and above by their state of residence.

# Aboriginal and Torres Strait Islander peoples

## Number of people vaccinated by age

Data as at:  
24 May 2022  
Updated weekly

Australia's COVID-19  
Vaccine Roadmap



Source: Australian Immunisation Register

# Commonwealth primary care

Data as at:  
25 May 2022

Australia's COVID-19  
Vaccine Roadmap



## Primary care vaccine administration sites

<b>5,725</b>	<b>128</b>	<b>178</b>	<b>3,598</b>
GPs	CVCs	ACCHS	Pharmacies



**36,502,675** total vaccine doses administered  
primary care settings as at 25 May  
**+ 54,329** recorded in the last 24 hours

## Primary care vaccinations by provider type

	Doses administered	Daily increase	7 day increase
General Practice* includes other Commonwealth	29,276,588	40,158	214,974
Pharmacy	7,226,087	14,171	81,063

**NSW**  
**12,599,517**  
(+17,312 daily increase)

**VIC**  
**9,065,600**  
(+12,982 daily increase)

**QLD**  
**7,020,591**  
(+11,081 daily increase)

**WA**  
**3,840,673**  
(+5,641 daily increase)

**TAS**  
**688,447**  
(+1,459 daily increase)

**SA**  
**2,179,988**  
(+4,291 daily increase)

**ACT**  
**576,876**  
(+917 daily increase)

**NT**  
**217,412**  
(+324 daily increase)

**313,571**

doses administered to persons  
residing in other territories or with  
missing residential information

\*General practice includes Commonwealth Vaccination Clinics, Aboriginal Community Health Centres, Royal Flying Doctor Service and other Commonwealth vaccination facilities

Source: Australian Immunisation Register

Data as at:  
25 May 2022

# Commonwealth aged care and disability doses administered



**1,294,572** (+ 1,488 last 24 hours)

Total vaccine doses administered in aged care and disability facilities as at 25 May

Number of doses administered as part of the Commonwealth aged and disability care rollout

**NSW**  
**564,783**  
(+353 daily increase)

**VIC**  
**243,008**  
(+433 daily increase)

**QLD**  
**205,816**  
(+273 daily increase)

**WA**  
**109,740**  
(+129 daily increase)

**TAS**  
**23,494**  
(+20 daily increase)

**SA**  
**84,781**  
(+101 daily increase)

**ACT**  
**17,574**  
(+62 daily increase)

**NT**  
**7,661**  
(<10 daily increase)

**37,715**

doses administered to persons  
residing in other territories or with  
missing residential information

\*Sourced from the Australian Immunisation Register. Includes all persons vaccinated at participating residential aged care, disability and related industry settings.

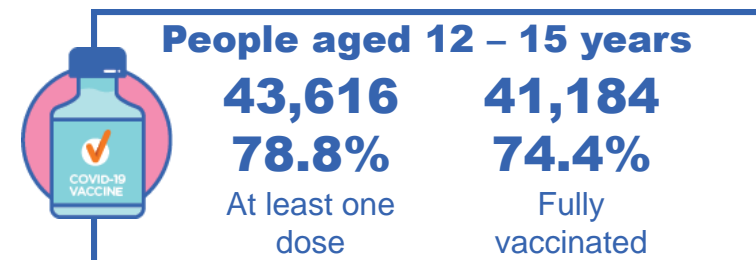
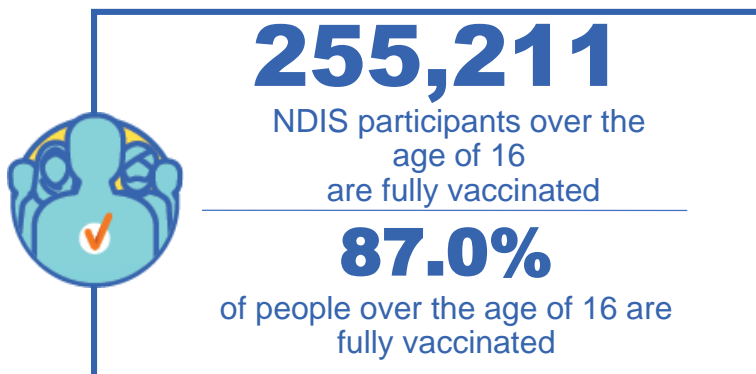
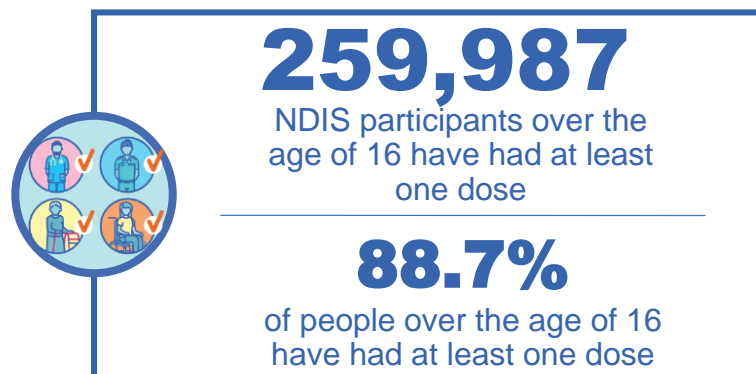
\*\*State level breakdown indicates the residential location and may not align to the state in which the vaccination occurred.

Source: Australian Immunisation Register

# National Disability Insurance Scheme (NDIS) reported vaccinations

Data as at:  
19 May 2022  
Updated weekly

Australia's COVID-19  
Vaccine Roadmap



## NDIS participant vaccinations

	People aged 16+ with at least one dose	People aged 16+ fully vaccinated	% People aged 16+ with at least one dose	% People aged 16+ fully vaccinated
ACT	4,911	4,844	90.6%	89.3%
NSW	79,723	78,424	88.9%	87.4%
NT	2,247	2,181	78.8%	76.4%
QLD	51,361	50,389	87.3%	85.7%
SA	21,240	20,729	86.6%	84.5%
TAS	6,514	6,362	88.6%	86.5%
VIC	69,150	67,972	89.8%	88.3%
WA	24,841	24,310	90.2%	88.3%
National	259,987	255,211	88.7%	87.0%

Source: Linkage between National Disability Insurance Agency data and the Australian Immunisation Register. Total NDIS participant numbers as at 28 February. Australian Immunisation Register data as at 18 May. Includes all participants regardless of residence type.

# National Disability Insurance Scheme (NDIS) reported vaccinations

Data as at:  
19 May 2022  
Updated weekly

Australia's COVID-19  
Vaccine Roadmap

NATIONAL	Total people with at least one dose	People fully vaccinated	Total number of individuals in cohort	% People with at least one dose	% People fully vaccinated
NDIS participants living in disability accommodation	20,771	20,430	23,352	88.9%	87.5%

## NDIS participants in disability and aged care accommodation



Source: Linkage between National Disability Insurance Agency data and the Australian Immunisation Register. Includes participants residing in disability accommodation only.

Source: Total NDIS participant numbers as at 28 February. Participant data as at 18 May. Australian Immunisation Register data as at 18 May. Worker data as at 19 May.

## NDIS workforce vaccinations

	NDIS workers with at least one dose	NDIS workers fully vaccinated	% NDIS workers with at least one dose	% NDIS workers fully vaccinated
NSW	125,387	120,302	98.2%	94.2%
VIC	117,076	113,562	98.3%	95.4%
QLD	70,482	69,519	97.7%	96.3%
WA	34,570	32,995	98.9%	94.4%
SA	35,846	33,534	98.6%	92.2%
TAS	10,904	10,672	99.1%	97.0%
ACT	11,990	11,964	98.9%	98.7%
NT	3,745	3,598	99.6%	95.7%
<b>TOTAL</b>	<b>410,000</b>	<b>396,146</b>	<b>98.3%</b>	<b>95.0%</b>

Source: the NDIS Commission has established a requirement for registered NDIS providers who provide intensive disability support services to report on the vaccination status of workers they employ, or otherwise engage, to deliver NDIS-funded supports and services, and who are required to be vaccinated in accordance with in-force state and territory public health orders. The statistics reflect data reported to the NDIS Commission by registered NDIS providers and should be considered indicative and subject to change

Note: Some registered NDIS providers are yet to report on the vaccination status of their workforce. The NDIS Commission is working with those providers around reporting requirements.

Remaining workers not included include those exempt from vaccination requirements, workers whose vaccination status is not yet verified by the provider (such as workers on leave) and provider reporting anomalies.



# Residential aged care vaccination rollout

Residential aged care facilities status

**176,555**

People fully vaccinated

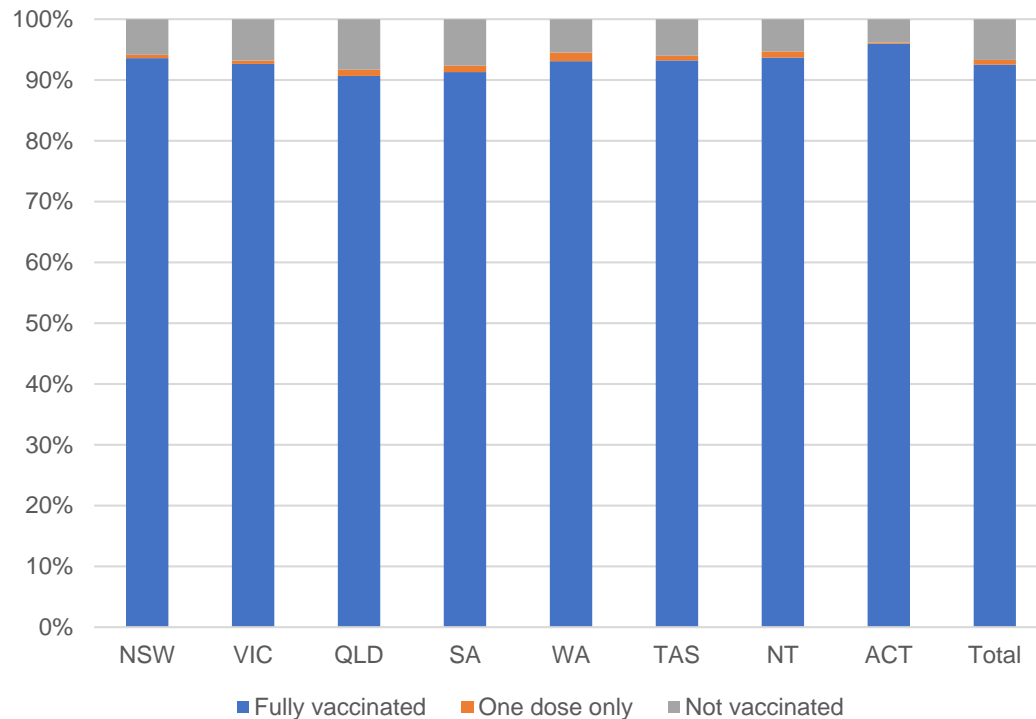
**178,019**

People with at least one dose

Australia's COVID-19 Vaccine Roadmap

Data as at:  
19 May 2022  
Updated weekly

## Aged care resident vaccinations



## Aged care worker vaccinations

Jurisdictions	Total workers with at least one dose	Workers fully vaccinated	% Workers with at least one dose	% Workers fully vaccinated
NSW	78,112	78,103	99.8%	99.8%
VIC	68,509	68,508	98.7%	98.7%
QLD	47,668	47,663	99.2%	99.2%
SA	26,998	26,982	98.6%	98.5%
WA	24,494	24,492	100.0%	100.0%
TAS	7,499	7,499	100.0%	100.0%
NT	886	886	100.0%	100.0%
ACT	2,943	2,943	100.0%	100.0%
<b>Total</b>	<b>257,109</b>	<b>257,076</b>	<b>99.3%</b>	<b>99.3%</b>

Source: My Aged Care Portal vaccination progress

\*Status updates are provided by facilities at least once per week. Reporting is updated Monday to Friday to encompass different facility updates being made on different days.

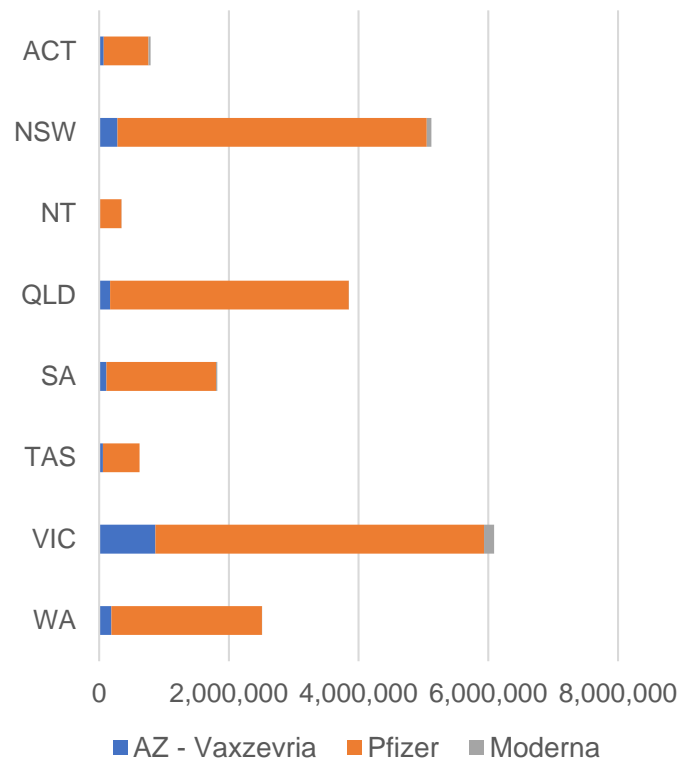
Data is sourced directly from Aged Care Service Providers and is not drawn or closely aligned with data from AIR due to inconsistencies and potential lags in uploading of records.



Data as at:  
25 May 2022

## Jurisdiction administered

Total vaccine doses administered in State and Territory clinics as at 25 May



**21,167,540** total vaccine doses administered  
in State and Territory clinics as at 25 May  
+ **6,468** recorded in the last 24 hours  
+ **37,792** recorded in the last 7 days

**NSW**  
**5,122,633**  
(+1,146 daily  
increase)

**VIC**  
**6,095,800**  
(+1,628 daily  
increase)

**QLD**  
**3,849,761**  
(+726 daily  
increase)

**WA**  
**2,513,893**  
(+881 daily  
increase)

**TAS**  
**623,858**  
(+165 daily  
increase)

**SA**  
**1,824,237**  
(+991 daily  
increase)

**ACT**  
**792,857**  
(+723 daily  
increase)

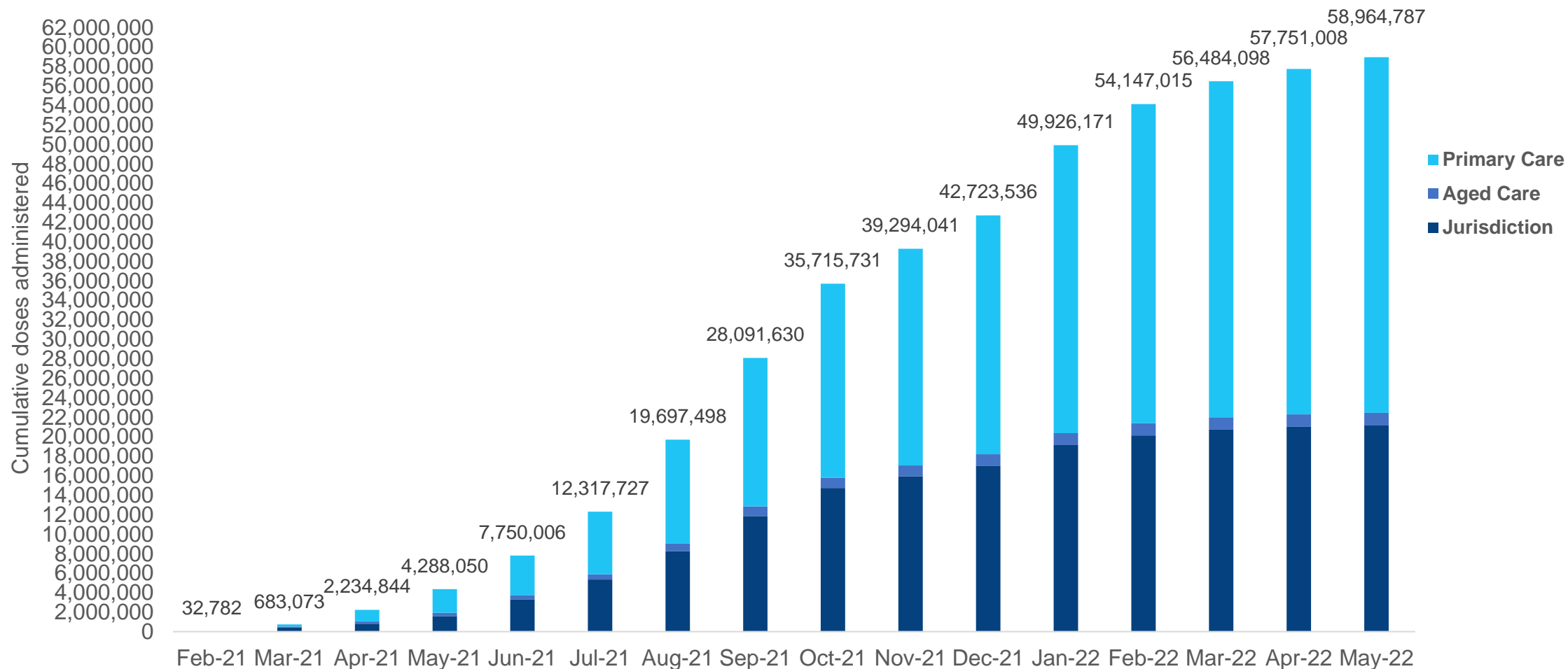
**NT**  
**344,501**  
(+208 daily  
increase)

\*Sourced from the Australian Immunisation Register. Numbers are calculated as difference in daily cumulative reported numbers to allow for historical corrections.

Source: Australian Immunisation Register

# Cumulative doses administered by channel

Data as at:  
25 May 2022



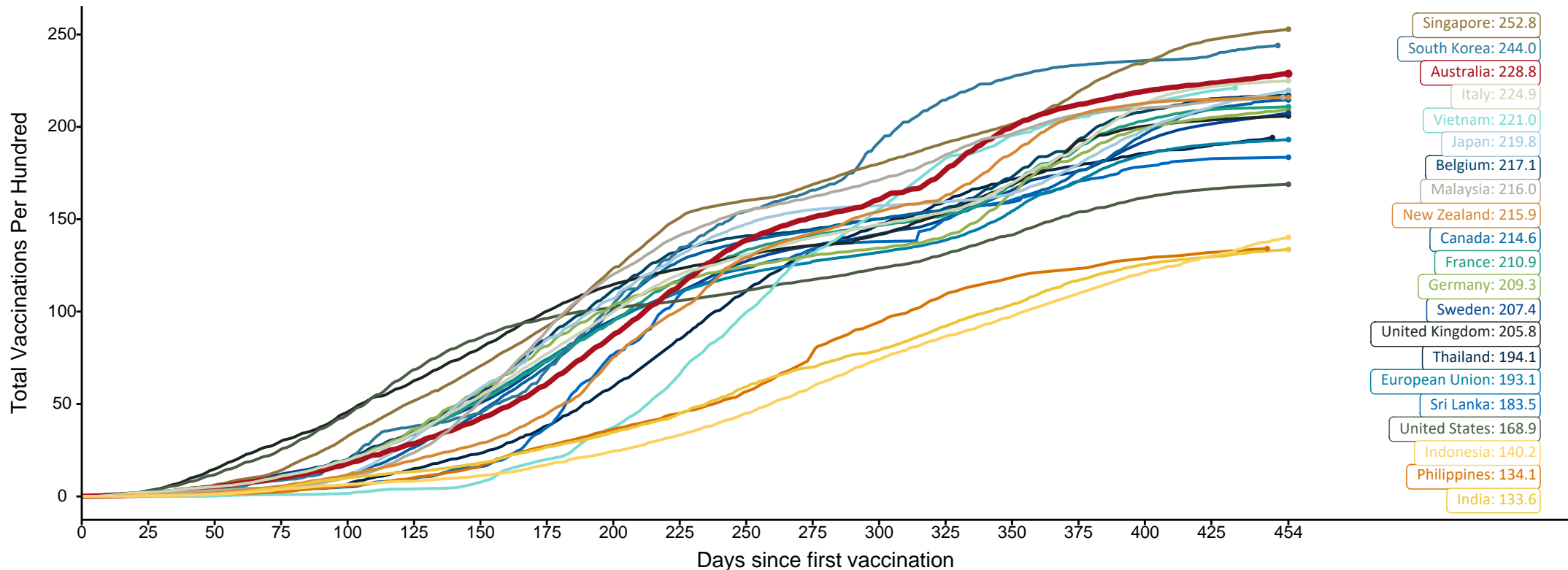
Source: Australian Immunisation Register

# Doses at equivalent stages of rollout (Day 454)

Data as at:  
22 May 2022  
Updated weekly

The x-axis is truncated at the length of Australia's vaccination program. Countries with intermittent reporting have had their doses per 100 imputed to Australia's current stage of rollout. Israel excluded as it is beyond scale of the graph

Cumulative doses administered (22 May): **58,784,623**



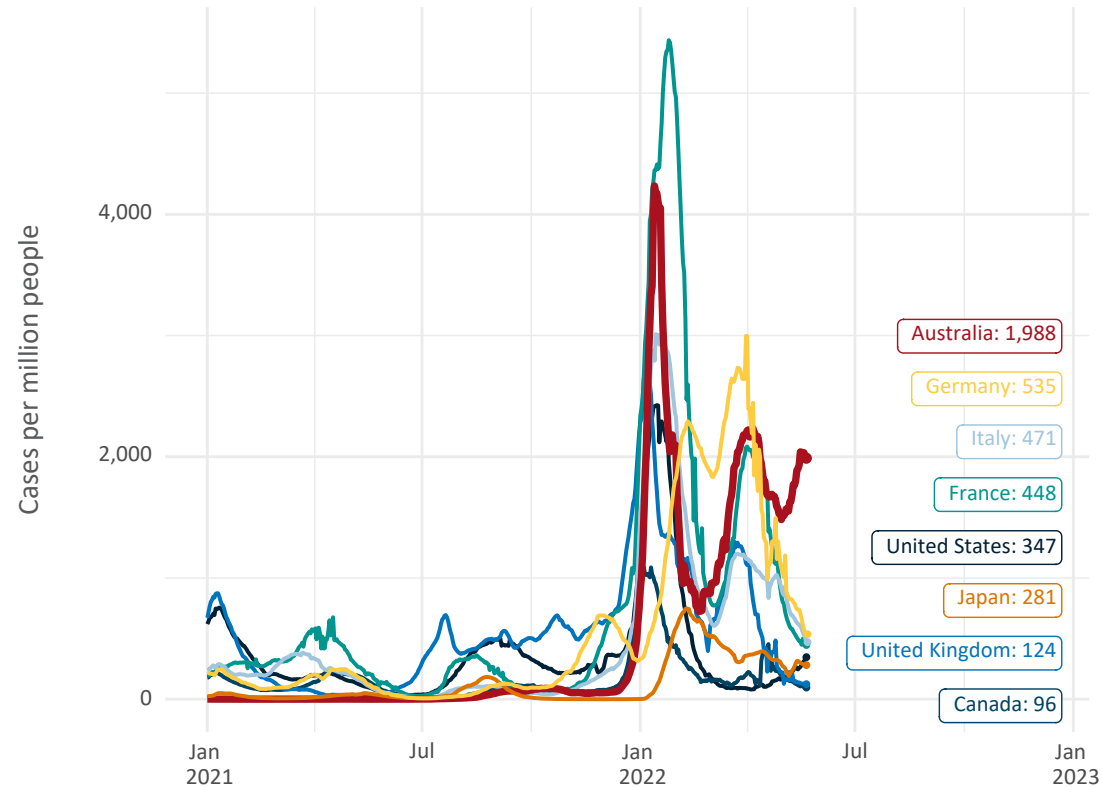
Note: From 11 January 2022, data for Australia includes all doses administered to people 5 and over. Prior to 11 January, data was for 12 and over.  
Source: Department of Health (Australia), Our World in Data (international)  
Latest data: 22 May

# International data – COVID-19

Data as at:  
22 May 2022  
Updated weekly

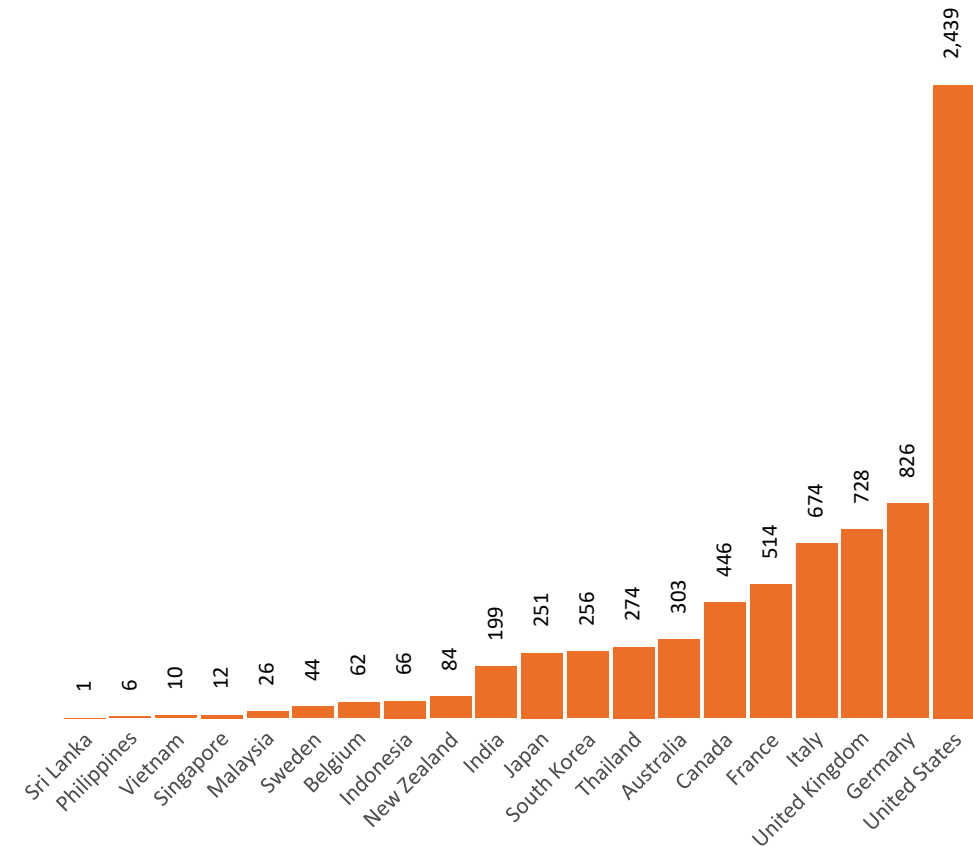
Australia's COVID-19  
Vaccine Roadmap

New daily cases per million since 2021, Australia and G7 countries  
Smoothed - 7 day average



Source: OWID  
Data downloaded: 23 May 2022 10:09  
Latest data: 22 May 2022

COVID-19 deaths in past 7 days - Australia and select countries



Source: OWID  
Data downloaded: 23 May 2022 10:09  
Latest data: 22 May 2022

# Pandemic Response Payments

Australia's COVID-19  
Vaccine Roadmap

Data as at midnight:  
22 May 2022 (updated weekly)



**2.38 million**

People have received at least one  
COVID Disaster Payment  
(including ISP200)

**8.12 million**

Claims granted across  
three different payments

**\$14.54 billion**

Paid Out as at 22 May 2022



Claims Received Digitally

**93%**

Three payments available:

**COVID Disaster Payment**

assisting during a lockdown event  
in a Commonwealth hotspot.

**Income Support Payment \$200**

for income support recipients who  
lost at least 8 hours of work.

**Pandemic Leave Disaster**

for those who have to self-isolate,  
quarantine or care.

For more information visit:

[www.servicesaustralia.gov.au](http://www.servicesaustralia.gov.au)



**COVID Disaster Payment:** 5.89 million claims received - 2.19 million individuals paid a total of \$12.59 billion.

**\$200 Income Support Payment:** 353,000 claims received - 183,000 individuals paid a total of \$268.92 million.

**Pandemic Leave Disaster Payment:** 2.40 million claims received - 1.43 million individuals paid a total of \$1.67 billion.

## COVID-19 DISASTER PAYMENTS

