



**Australian Government**  
**Operation COVID Shield**

# COVID-19 Vaccine Roll-out

25 May 2022

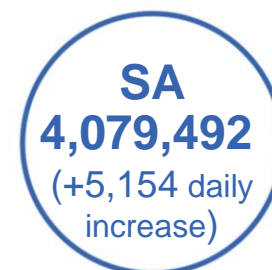
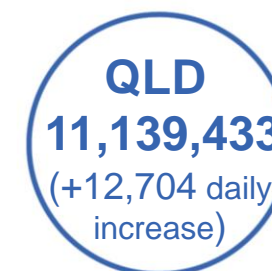
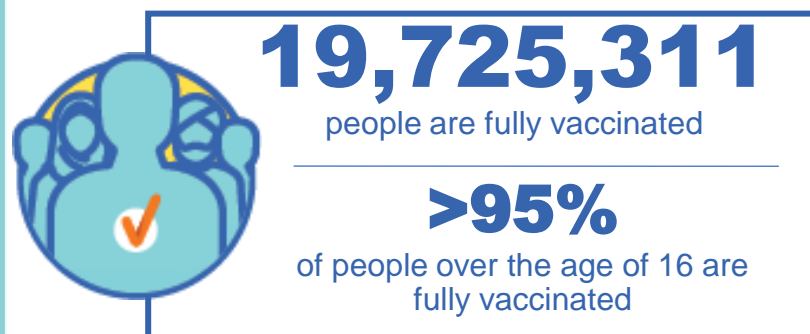
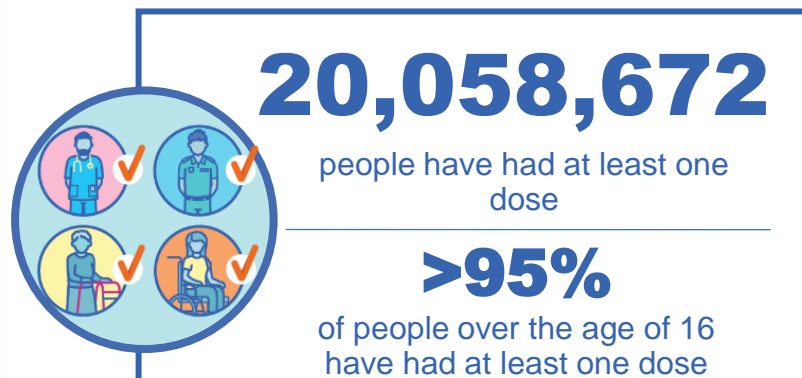
Data as at:  
24 May 2022

## Total vaccine doses



**58,902,502** total vaccine  
doses administered nationally as at 24 May

**+62,470** recorded in the last 24 hours

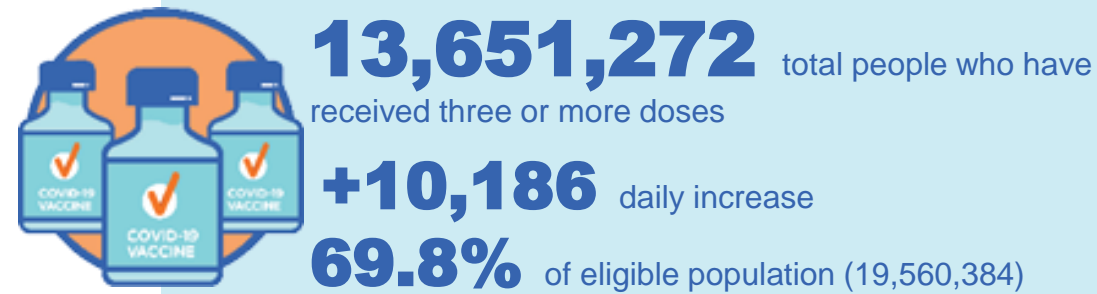
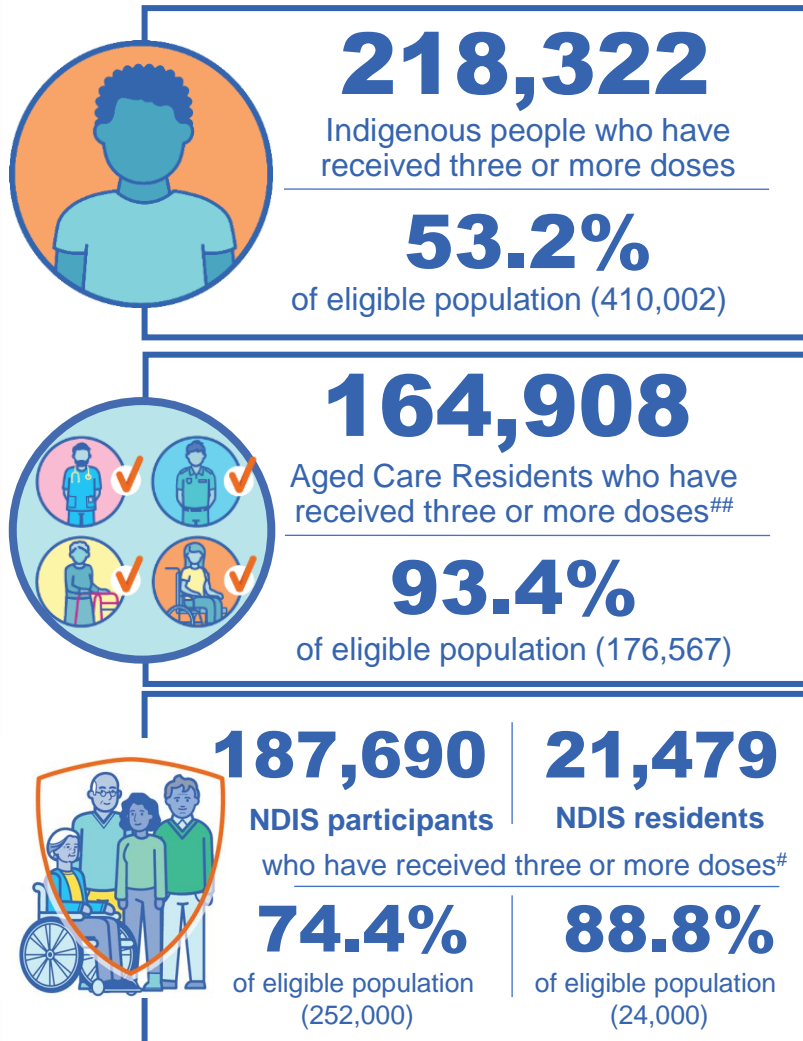


\*Administration state breakdown indicates state in which a vaccine was administered

\*\*Overall dose count includes instances of more than three doses per person in a small number of cases.

Source: Australian Immunisation Register

## Booster Vaccinations



Data as at:  
24 May 2022

	Number of People	Daily Increase	% of Eligible
NSW	4,164,862	2,812	67.1%
VIC	3,646,394	2,306	72.0%
QLD	2,362,774	1,971	62.9%
WA	1,679,127	1,470	83.2%
SA	970,334	858	73.1%
TAS	311,983	250	72.3%
ACT	270,349	148	78.1%
NT	128,832	198	77.0%

\*People may belong to multiple groups and could be represented in the above breakdowns multiple times.  
# NDIS participants data as at 22 May 2022. ## Aged Care Residents data as at 23 May 2022.

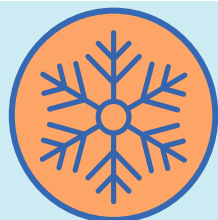
Source: Australian Immunisation Register

**116,617** doses administered to persons residing in other territories or with missing residential information

# Winter / Fourth Doses

Data as at:  
24 May 2022

Australia's COVID-19  
Vaccine Roadmap



**1,313,407** total people (16+) who have received four or more doses

**+47,992** daily increase

	Number of People 16+	Daily Increase
ACT	28,916	1,033
NSW	427,060	14,289
NT	5,918	188
QLD	249,773	9,903
SA	105,300	4,099
TAS	37,163	1,210
VIC	329,084	12,212
WA	124,138	4,775

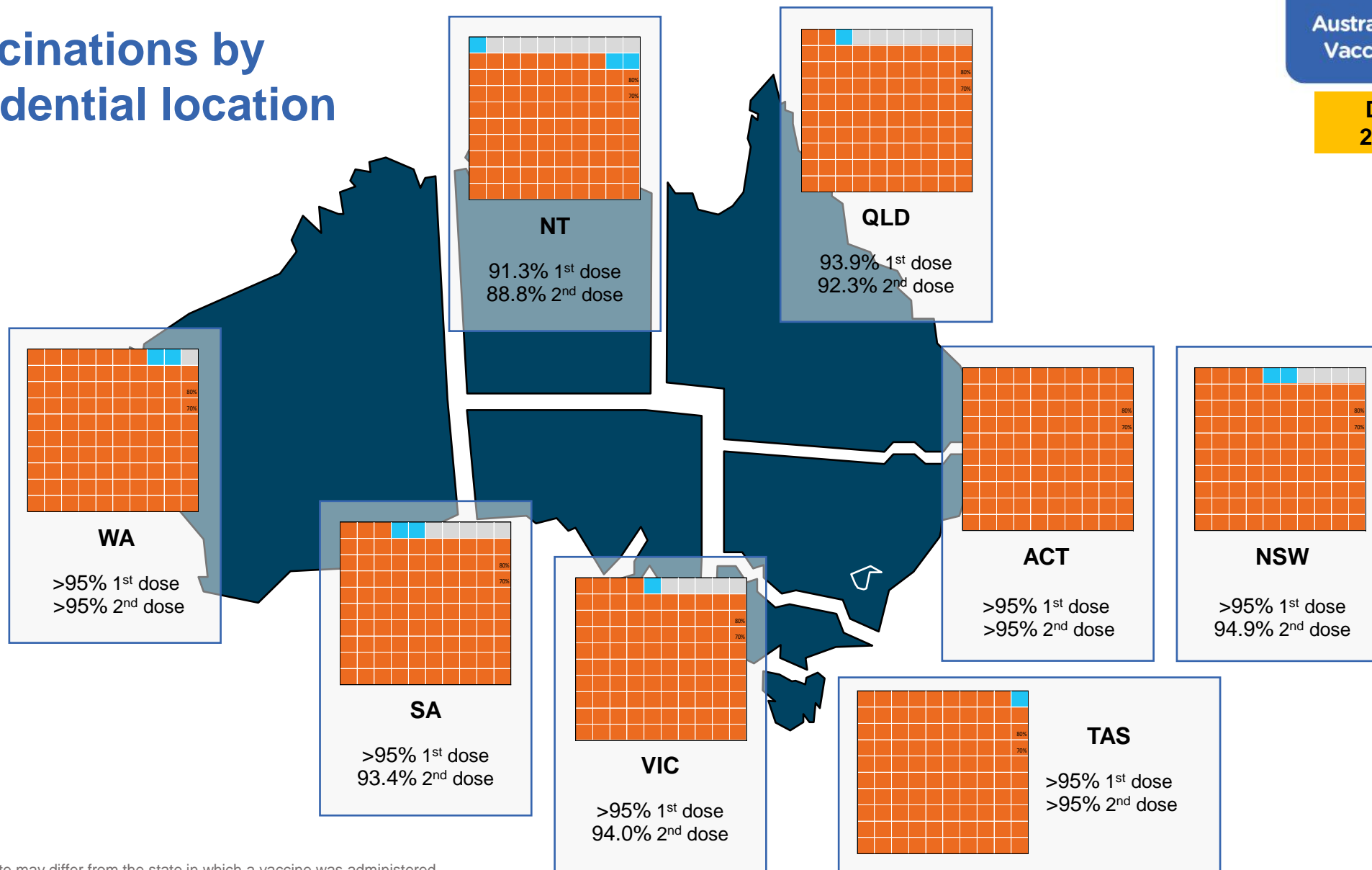
**6,055** doses administered to persons  
residing in other territories or with  
missing residential information

Source: Australian Immunisation Register

# Vaccinations by residential location

Australia's COVID-19  
Vaccine Roadmap

Data as at:  
24 May 2022



\*Residential state may differ from the state in which a vaccine was administered

# Commonwealth and Jurisdiction vaccine doses administered

Data as at:  
24 May 2022



**58,902,502** total vaccine  
doses administered nationally as at 24 May  
**+ 62,470** recorded in the last 24 hours



**21,161,072**  
doses administered by state  
and territory facilities  
**+ 6,123**  
recorded in the last 24 hours

NSW	Jurisdictions	Commonwealth
Cumulative	5,121,487	13,145,386
Daily increase	728	17,426

TAS	Jurisdictions	Commonwealth
Cumulative	623,693	708,438
Daily increase	203	1,303

VIC	Jurisdictions	Commonwealth
Cumulative	6,094,172	9,378,219
Daily increase	1,620	14,013

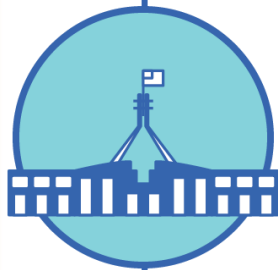
SA	Jurisdictions	Commonwealth
Cumulative	1,823,246	2,256,246
Daily increase	864	4,290

QLD	Jurisdictions	Commonwealth
Cumulative	3,849,035	7,290,398
Daily increase	710	11,994

ACT	Jurisdictions	Commonwealth
Cumulative	792,134	749,420
Daily increase	896	1,177

WA	Jurisdictions	Commonwealth
Cumulative	2,513,012	3,971,716
Daily increase	881	5,868

NT	Jurisdictions	Commonwealth
Cumulative	344,293	241,607
Daily increase	221	276



**37,741,430**  
doses administered by  
commonwealth facilities  
**+ 56,347**  
recorded in the last 24 hours

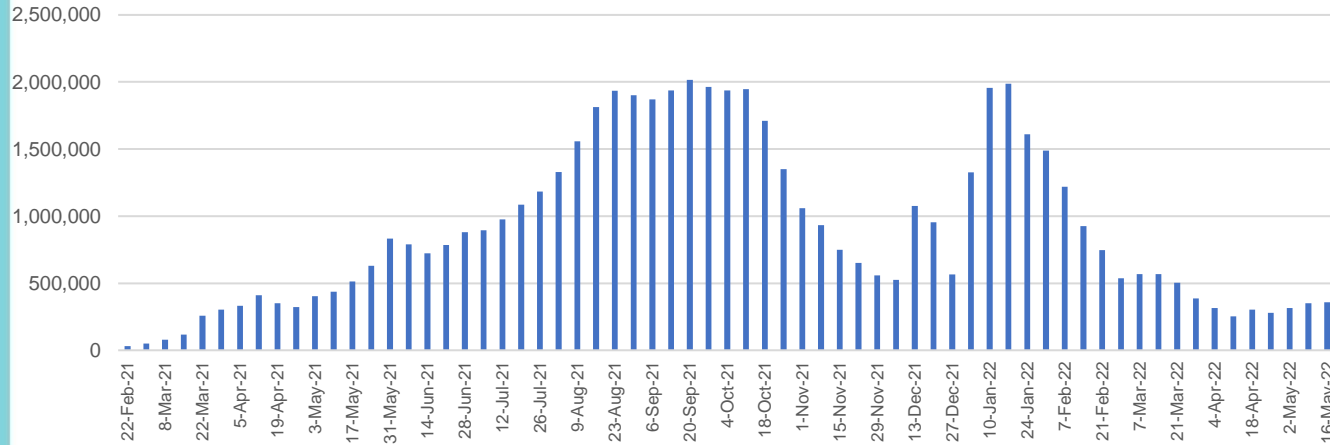
**36,448,346** total vaccine doses  
administered in primary care settings  
**1,293,084** total vaccine doses  
administered in aged care and disability  
settings

# Vaccine milestone charts

Data as at:  
24 May 2022

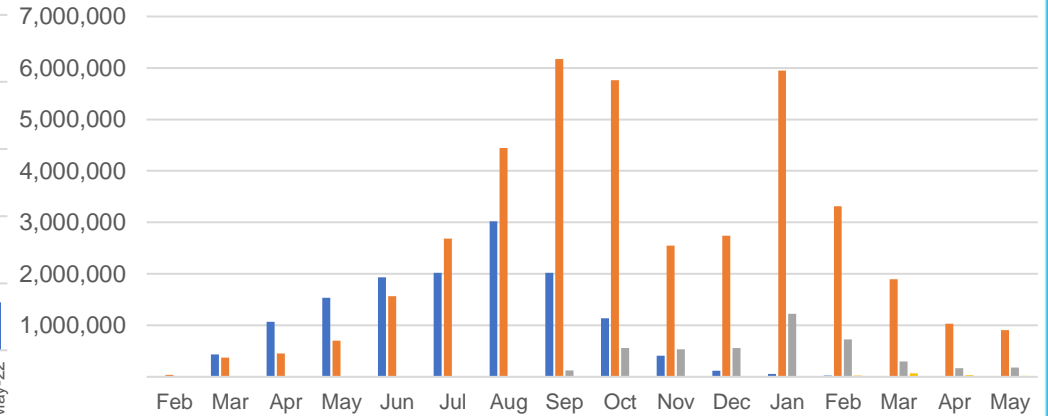
Australia's COVID-19  
Vaccine Roadmap

Doses Administered by Week

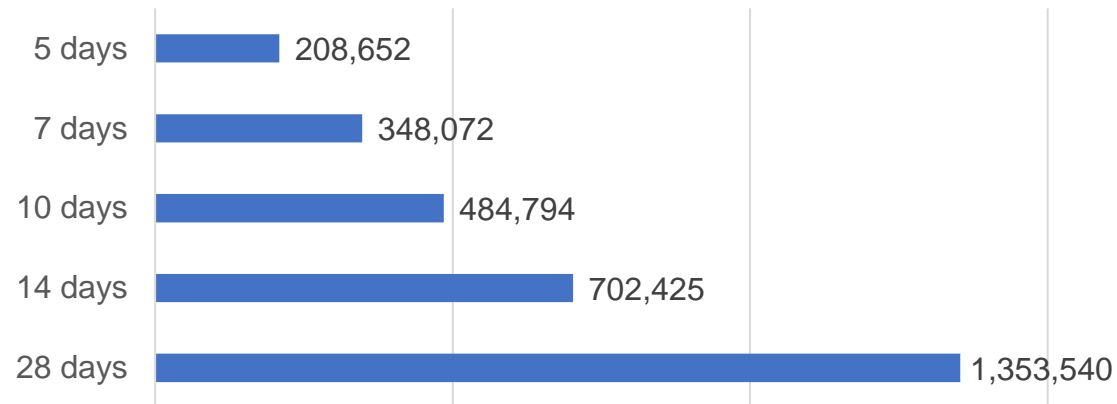


Doses by administration month and vaccine type

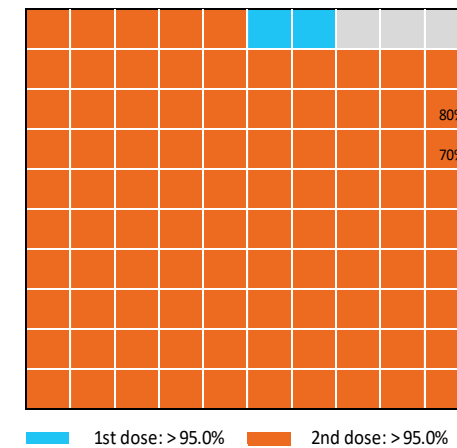
AZ - Vaxzevria Pfizer Moderna Novavax



Doses Reported



Eligible population percentage coverage



\*Each square represents 1% of the national population.  
Squares are filled as milestones are achieved.

\*Sourced from the Australian Immunisation Register.

# Doses by age and sex

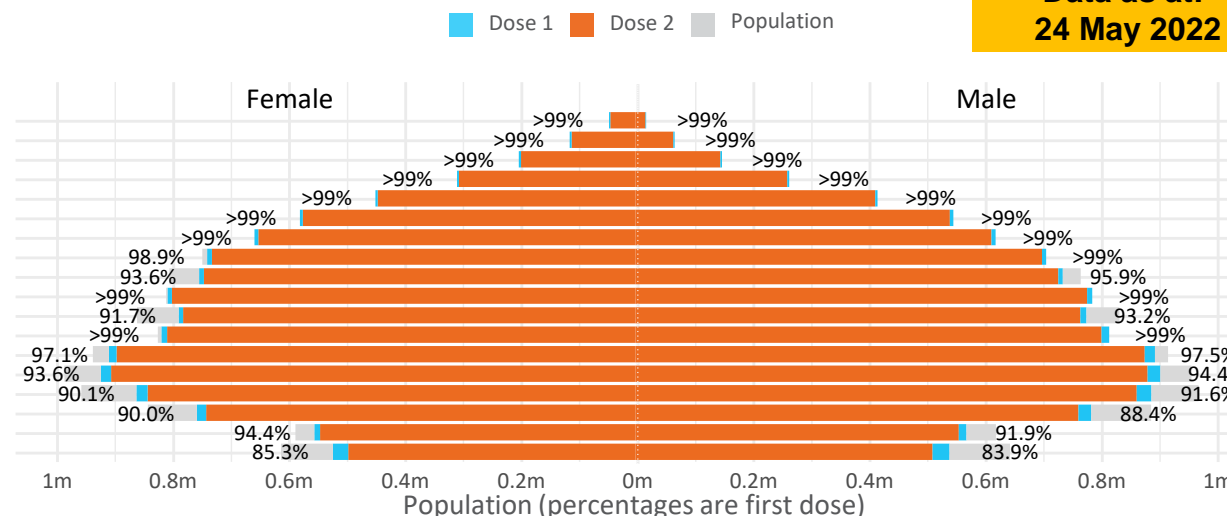
First and second doses by age and sex

Australia's COVID-19  
Vaccine Roadmap

Data as at:  
24 May 2022

Age	Dose 1	Dose 2
95+	63,592 (>99%)	60,184 (>99%)
90-94	179,385 (>99%)	173,817 (>99%)
85-89	347,247 (>99%)	340,370 (>99%)
80-84	567,620 (>99%)	560,372 (>99%)
75-79	858,175 (>99%)	849,794 (>99%)
70-74	1,116,515 (>99%)	1,105,395 (>99%)
65-69	1,266,813 (>99%)	1,252,409 (>99%)
60-64	1,433,794 (>99%)	1,417,605 (98.7%)
55-59	1,475,870 (94.9%)	1,459,343 (93.8%)
50-54	1,580,279 (>99%)	1,563,365 (>99%)
45-49	1,551,347 (92.5%)	1,532,868 (91.4%)
40-44	1,620,574 (>99%)	1,596,612 (98.5%)
35-39	1,790,344 (97.6%)	1,758,379 (95.8%)
30-34	1,816,744 (94.4%)	1,775,176 (92.3%)
25-29	1,743,139 (91.4%)	1,695,760 (88.9%)
20-24	1,532,854 (89.5%)	1,493,370 (87.2%)
16-19	1,114,380 (93.2%)	1,090,492 (91.2%)
12-15	1,052,888 (84.6%)	997,607 (80.2%)

	16+	50+	12-15	5-11
Dose 1	97.28% (20,058,672 doses / 20,619,959 people)	>99% (8,889,290 doses / 8,749,703 people)	84.64% (1,052,888 doses / 1,243,990 people)	52.69% (1,199,623 doses / 2,276,638 people)
Dose 2	95.66% (19,725,311 doses / 20,619,959 people)	>99% (8,782,654 doses / 8,749,703 people)	80.19% (997,607 doses / 1,243,990 people)	38.45% (875,431 doses / 2,276,638 people)



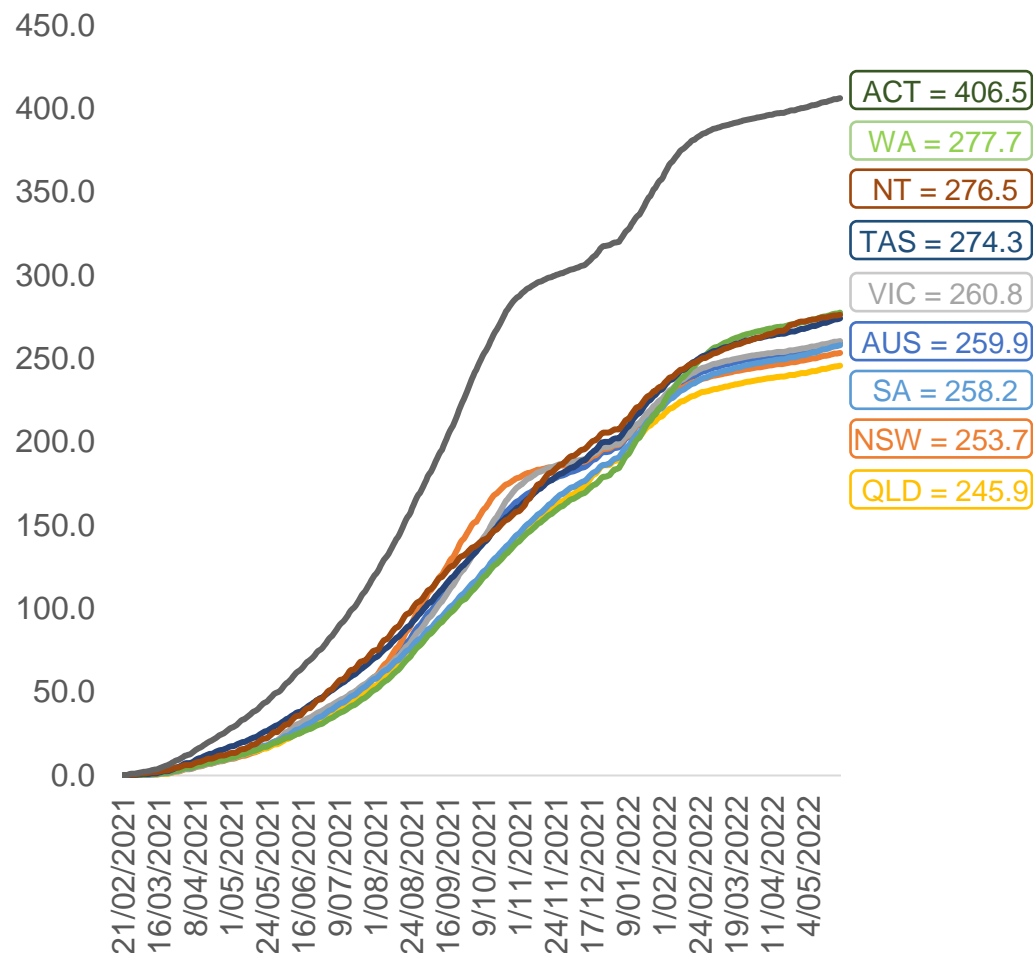
	AUS	ACT	NSW	NT	QLD	SA	TAS	VIC	WA
16 and over - dose 1	20,058,672	352,719	6,327,829	173,954	3,861,080	1,375,167	444,936	5,160,929	2,095,505
16 and over - dose 2	19,725,311	347,085	6,231,252	169,252	3,797,448	1,345,920	435,897	5,083,895	2,064,305
16 and over - population	20,619,959*	344,037	6,565,651	190,571	4,112,707	1,440,400	440,172	5,407,574	2,114,978
16 and over % with dose 1	97.28%	>99%	96.38%	91.28%	93.88%	95.47%	>99%	95.44%	>99%
16 and over % with dose 2	95.66%	>99%	94.91%	88.81%	92.33%	93.44%	>99%	94.01%	97.60%
5 to 11 - dose 1	1,199,623	31,906	357,969	13,235	208,240	84,073	28,618	326,362	141,391
5 to 11 - dose 2	875,431	26,886	266,060	8,414	146,497	61,503	22,801	239,456	99,271
5 to 11 - population	2,276,638	39,789	716,460	24,750	478,731	148,816	45,033	578,499	244,154
5 to 11 % with dose 1	52.69%	80.19%	49.96%	53.47%	43.50%	56.49%	63.55%	56.42%	57.91%
5 to 11 % with dose 2	38.45%	67.57%	37.14%	34.00%	30.60%	41.33%	50.63%	41.39%	40.66%
12 to 15 - dose 1	1,052,888	20,097	323,779	10,820	206,381	68,349	22,929	275,100	115,845
12 to 15 - dose 2	997,607	19,562	309,492	9,741	193,188	64,687	21,824	263,380	107,371
12 to 15 - population	1,243,990	19,693	390,330	13,060	270,146	82,747	26,308	308,611	132,869
12 to 15 % with dose 1	84.64%	>99%	82.95%	82.85%	76.40%	82.60%	87.16%	89.14%	87.19%
12 to 15 % with dose 2	80.19%	>99%	79.29%	74.59%	71.51%	78.17%	82.96%	85.34%	80.81%

\*National population will not equal sum of listed jurisdictions due to a small number of people counted in national population residing in some 'other' territories. Sum of state doses will not add to national total as some records are unable to be geocoded to a State or Territory.  
Doses sourced from Australian Immunisation Register, population from ABS ERP June 2020



# Vaccinations by location

Cumulative total doses administered vs eligible state populations\*

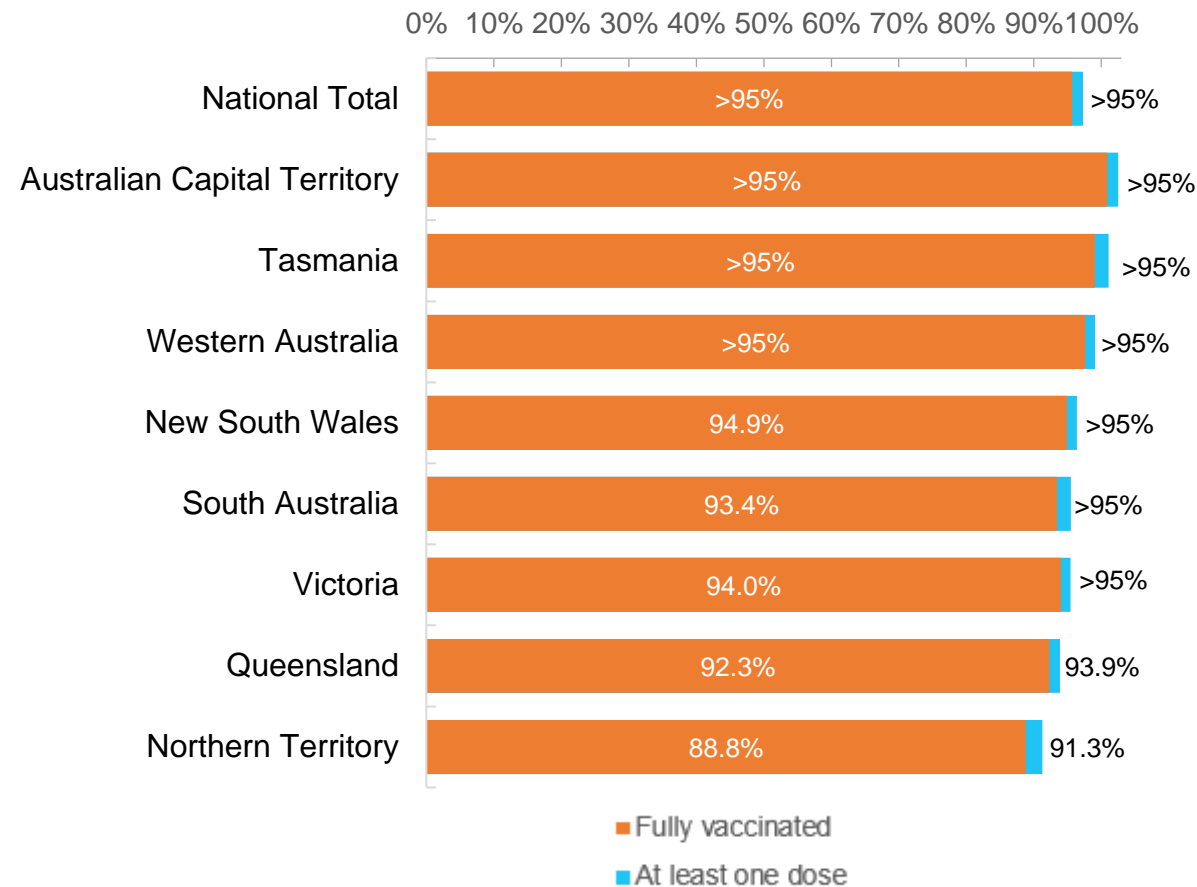


\*Not an indication of percentage vaccinated, numbers will exceed 100 due to multiple doses required per person of the population. All doses are included for those aged 12 and above, and are based on vaccination provider location.

Data as at:  
24 May 2022

Australia's COVID-19  
Vaccine Roadmap

First and Second Doses by residential location



# Aboriginal and Torres Strait Islander peoples

## Number of people vaccinated

Data as at:  
24 May 2022  
Updated weekly

Australia's COVID-19  
Vaccine Roadmap



**442,270**

people over the age of 16  
have had at least one dose

**84.9%**

of people over the age of 16  
have had at least one dose



**423,534**

people over the age of 16  
are fully vaccinated

**81.3%**

of people over the age of 16 are  
fully vaccinated



People aged 12 – 15 years

**48,377**

**42,583**

**68.3%**

At least one dose

**60.1%**

Fully vaccinated

### 178 Aboriginal community controlled health services (ACCHS)

0#

50

27

44

12

3

21

21

**ACT**

**NSW**

**NT**

**QLD**

**SA**

**TAS**

**VIC**

**WA**

Medicare Address State <sup>##</sup>	Individuals Dose 1	Individuals Dose 1 %	Individuals Dose 2	Individuals Dose 2 %
Australian Capital Territory	4,796	91.4%	4,676	89.1%
New South Wales	135,984	87.3%	132,925	85.3%
Northern Territory	41,496	89.6%	39,447	85.2%
Queensland	116,165	81.8%	110,722	77.9%
South Australia	20,003	80.4%	18,598	74.8%
Tasmania	13,954	88.8%	13,545	86.2%
Victoria	35,681	90.4%	34,902	88.4%
Western Australia	53,681	86.6%	49,865	80.5%
Unknown/Other Territories	20,510	69.5%	18,854	63.9%
<b>Totals</b>	<b>442,270</b>	<b>84.9%</b>	<b>423,534</b>	<b>81.3%</b>

Source: Australian Immunisation Register

\*Identifying as Aboriginal and Torres Strait Islander is optional and the estimated population may be under reported.

\*\*Includes all Aboriginal and Torres Strait Islander peoples who have received a vaccination, not limited to those administered in an ACCHS setting

#ACCHS in the ACT are currently operating as a Commonwealth Vaccine Clinics so not included to avoid double counting

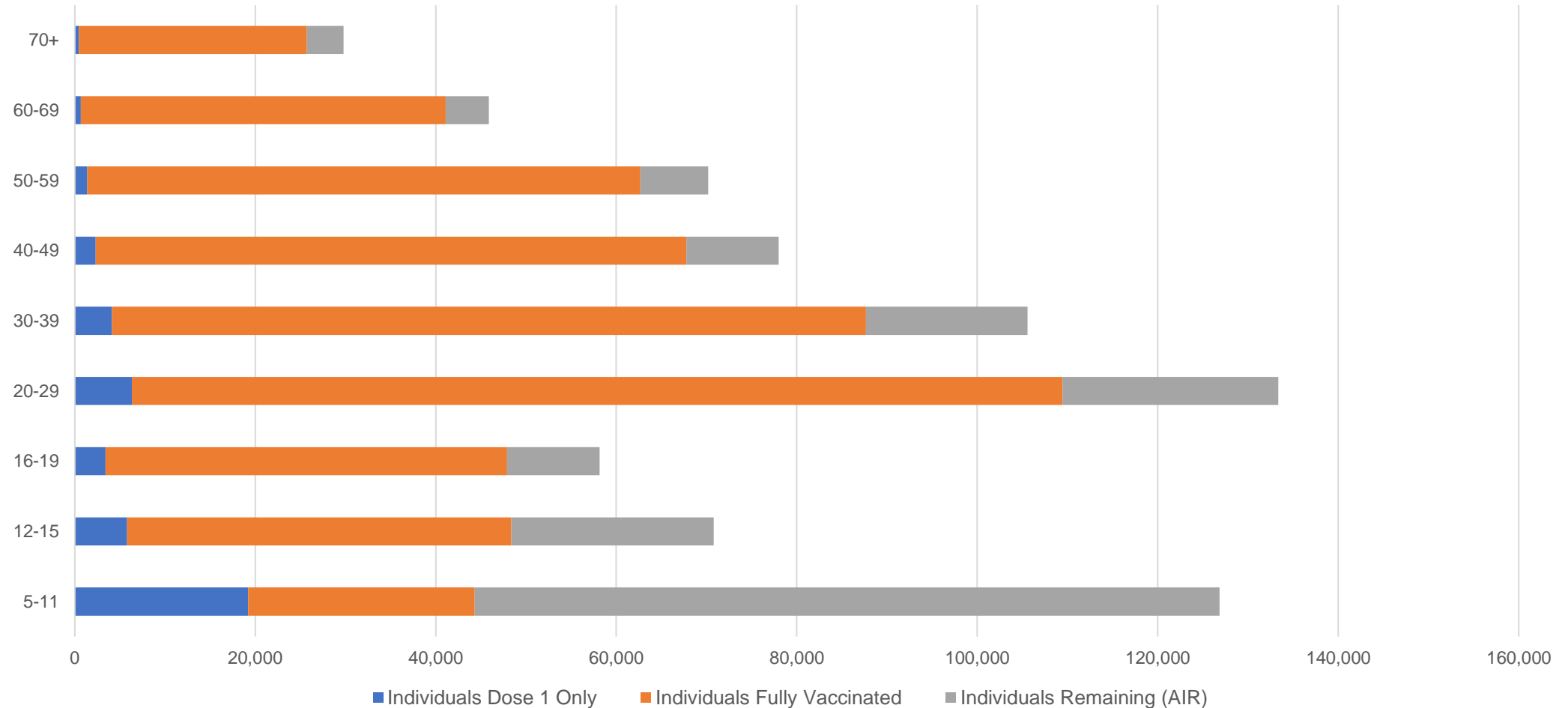
##The above table includes all identified Aboriginal and Torres Strait Islander people who are aged 16 and above by their state of residence.

# Aboriginal and Torres Strait Islander peoples

## Number of people vaccinated by age

Data as at:  
24 May 2022  
Updated weekly

Australia's COVID-19  
Vaccine Roadmap



Source: Australian Immunisation Register

# Commonwealth primary care

Data as at:  
24 May 2022

Australia's COVID-19  
Vaccine Roadmap



## Primary care vaccine administration sites

<b>5,725</b>	<b>128</b>	<b>178</b>	<b>3,598</b>
GPs	CVCs	ACCHS	Pharmacies



**36,448,346** total vaccine doses administered  
primary care settings as at 24 May  
**+ 55,009** recorded in the last 24 hours

## Primary care vaccinations by provider type

	Doses administered	Daily increase	7 day increase
General Practice* includes other Commonwealth	29,236,430	40,226	219,221
Pharmacy	7,211,916	14,783	82,955

**NSW**  
**12,582,205**  
(+17,136 daily increase)

**VIC**  
**9,052,618**  
(+13,148 daily increase)

**QLD**  
**7,009,510**  
(+11,881 daily increase)

**WA**  
**3,835,032**  
(+5,764 daily increase)

**TAS**  
**686,988**  
(+1,305 daily increase)

**SA**  
**2,175,697**  
(+4,258 daily increase)

**ACT**  
**575,959**  
(+966 daily increase)

**NT**  
**217,088**  
(+266 daily increase)

**313,249**

doses administered to persons  
residing in other territories or with  
missing residential information

\*General practice includes Commonwealth Vaccination Clinics, Aboriginal Community Health Centres, Royal Flying Doctor Service and other Commonwealth vaccination facilities

Source: Australian Immunisation Register

Data as at:  
24 May 2022

# Commonwealth aged care and disability doses administered



**1,293,084** (+ 1,338 last 24 hours)

Total vaccine doses administered in aged care and disability facilities as at 24 May

Number of doses administered as part of the Commonwealth aged and disability care rollout

**NSW**  
**564,430**  
(+326 daily increase)

**VIC**  
**242,575**  
(+577 daily increase)

**QLD**  
**205,543**  
(+127 daily increase)

**WA**  
**109,611**  
(+44 daily increase)

**TAS**  
**23,474**  
(+20 daily increase)

**SA**  
**84,680**  
(+72 daily increase)

**ACT**  
**17,512**  
(+85 daily increase)

**NT**  
**7,660**  
( $<10$  daily increase)

**37,599**

doses administered to persons  
residing in other territories or with  
missing residential information

\*Sourced from the Australian Immunisation Register. Includes all persons vaccinated at participating residential aged care, disability and related industry settings.

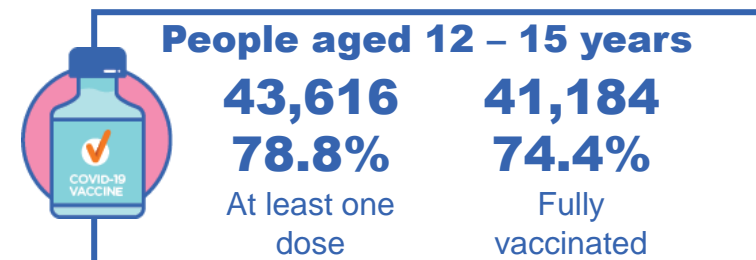
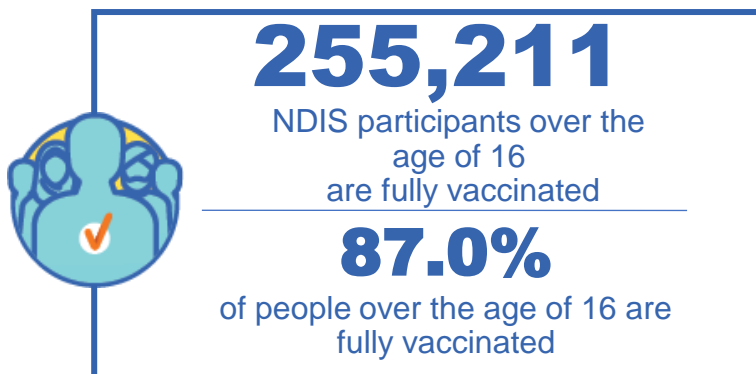
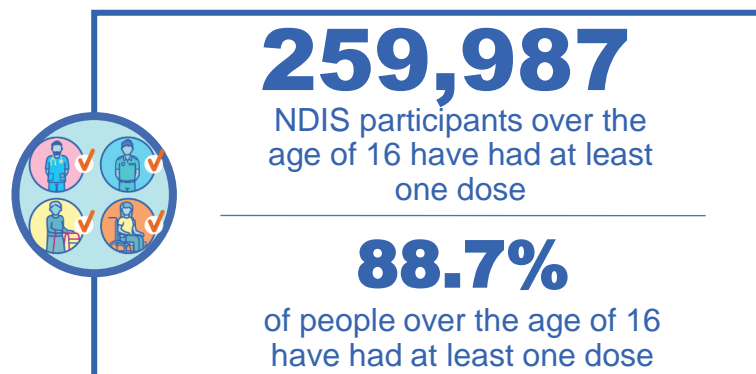
\*\*State level breakdown indicates the residential location and may not align to the state in which the vaccination occurred.

Source: Australian Immunisation Register

# National Disability Insurance Scheme (NDIS) reported vaccinations

Data as at:  
19 May 2022  
Updated weekly

Australia's COVID-19  
Vaccine Roadmap



## NDIS participant vaccinations

	People aged 16+ with at least one dose	People aged 16+ fully vaccinated	% People aged 16+ with at least one dose	% People aged 16+ fully vaccinated
ACT	4,911	4,844	90.6%	89.3%
NSW	79,723	78,424	88.9%	87.4%
NT	2,247	2,181	78.8%	76.4%
QLD	51,361	50,389	87.3%	85.7%
SA	21,240	20,729	86.6%	84.5%
TAS	6,514	6,362	88.6%	86.5%
VIC	69,150	67,972	89.8%	88.3%
WA	24,841	24,310	90.2%	88.3%
National	259,987	255,211	88.7%	87.0%

Source: Linkage between National Disability Insurance Agency data and the Australian Immunisation Register. Total NDIS participant numbers as at 28 February. Australian Immunisation Register data as at 18 May. Includes all participants regardless of residence type.

# National Disability Insurance Scheme (NDIS) reported vaccinations

Data as at:  
19 May 2022  
Updated weekly

Australia's COVID-19  
Vaccine Roadmap

NATIONAL	Total people with at least one dose	People fully vaccinated	Total number of individuals in cohort	% People with at least one dose	% People fully vaccinated
NDIS participants living in disability accommodation	20,771	20,430	23,352	88.9%	87.5%

## NDIS participants in disability and aged care accommodation



Source: Linkage between National Disability Insurance Agency data and the Australian Immunisation Register. Includes participants residing in disability accommodation only.

Source: Total NDIS participant numbers as at 28 February. Participant data as at 18 May. Australian Immunisation Register data as at 18 May. Worker data as at 19 May.

## NDIS workforce vaccinations

	NDIS workers with at least one dose	NDIS workers fully vaccinated	% NDIS workers with at least one dose	% NDIS workers fully vaccinated
NSW	125,387	120,302	98.2%	94.2%
VIC	117,076	113,562	98.3%	95.4%
QLD	70,482	69,519	97.7%	96.3%
WA	34,570	32,995	98.9%	94.4%
SA	35,846	33,534	98.6%	92.2%
TAS	10,904	10,672	99.1%	97.0%
ACT	11,990	11,964	98.9%	98.7%
NT	3,745	3,598	99.6%	95.7%
<b>TOTAL</b>	<b>410,000</b>	<b>396,146</b>	<b>98.3%</b>	<b>95.0%</b>

Source: the NDIS Commission has established a requirement for registered NDIS providers who provide intensive disability support services to report on the vaccination status of workers they employ, or otherwise engage, to deliver NDIS-funded supports and services, and who are required to be vaccinated in accordance with in-force state and territory public health orders. The statistics reflect data reported to the NDIS Commission by registered NDIS providers and should be considered indicative and subject to change

Note: Some registered NDIS providers are yet to report on the vaccination status of their workforce. The NDIS Commission is working with those providers around reporting requirements.

Remaining workers not included include those exempt from vaccination requirements, workers whose vaccination status is not yet verified by the provider (such as workers on leave) and provider reporting anomalies.



# Residential aged care vaccination rollout

Residential aged care facilities status

**176,555**

People fully vaccinated

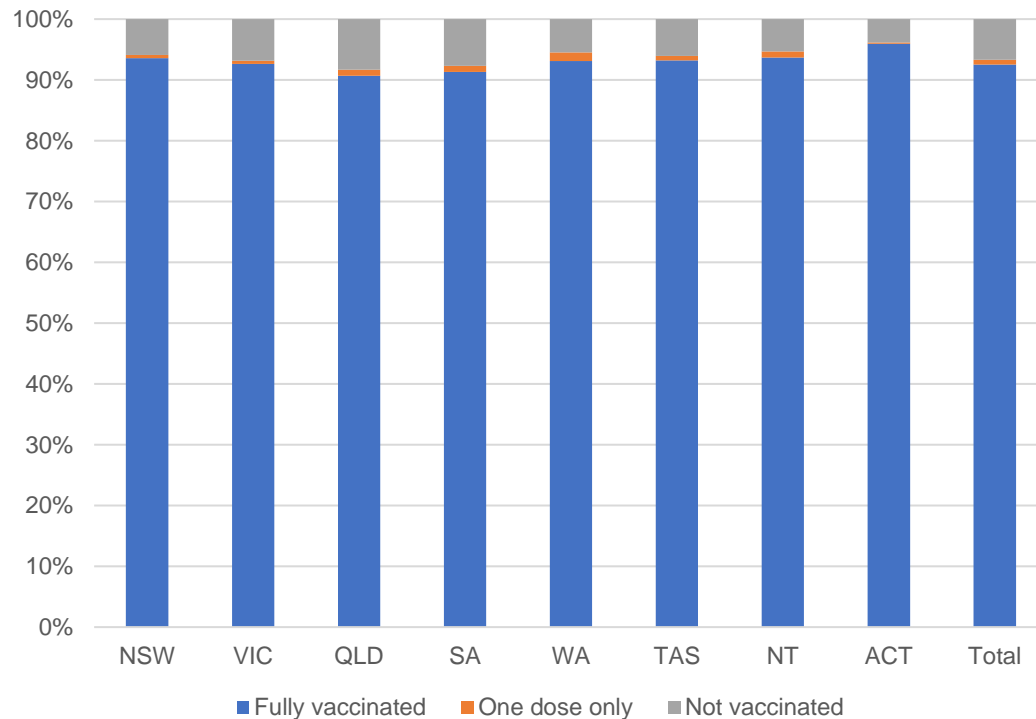
**178,019**

People with at least one dose

Australia's COVID-19 Vaccine Roadmap

Data as at:  
19 May 2022  
Updated weekly

## Aged care resident vaccinations



## Aged care worker vaccinations

Jurisdictions	Total workers with at least one dose	Workers fully vaccinated	% Workers with at least one dose	% Workers fully vaccinated
NSW	78,112	78,103	99.8%	99.8%
VIC	68,509	68,508	98.7%	98.7%
QLD	47,668	47,663	99.2%	99.2%
SA	26,998	26,982	98.6%	98.5%
WA	24,494	24,492	100.0%	100.0%
TAS	7,499	7,499	100.0%	100.0%
NT	886	886	100.0%	100.0%
ACT	2,943	2,943	100.0%	100.0%
Total	257,109	257,076	99.3%	99.3%

Source: My Aged Care Portal vaccination progress

\*Status updates are provided by facilities at least once per week. Reporting is updated Monday to Friday to encompass different facility updates being made on different days.

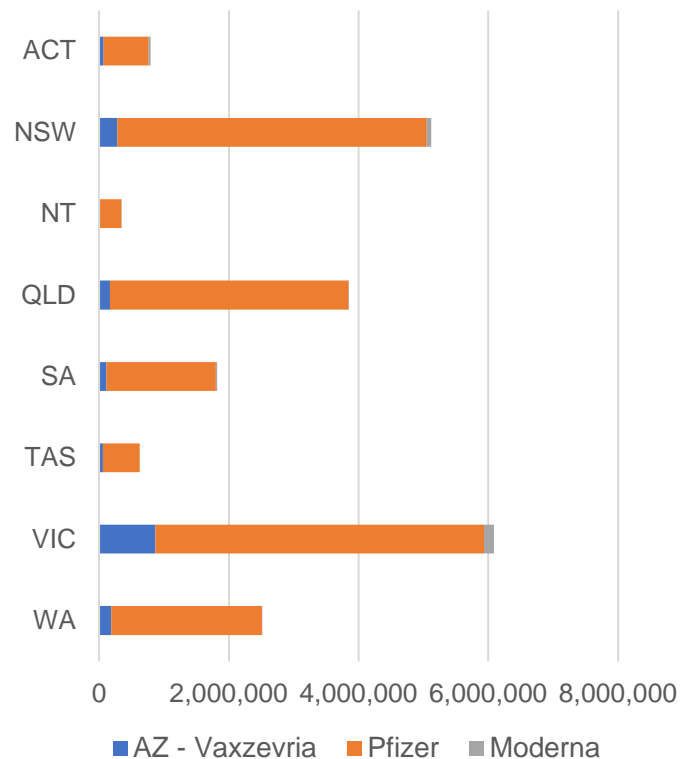
Data is sourced directly from Aged Care Service Providers and is not drawn or closely aligned with data from AIR due to inconsistencies and potential lags in uploading of records.



Data as at:  
24 May 2022

## Jurisdiction administered

Total vaccine doses administered in State and Territory clinics as at 24 May



**21,161,072** total vaccine doses administered  
in State and Territory clinics as at 24 May  
+ **6,123** recorded in the last 24 hours  
+ **38,938** recorded in the last 7 days

**NSW**  
**5,121,487**  
(+728 daily  
increase)

**VIC**  
**6,094,172**  
(+1,620 daily  
increase)

**QLD**  
**3,849,035**  
(+710 daily  
increase)

**WA**  
**2,513,012**  
(+881 daily  
increase)

**TAS**  
**623,693**  
(+203 daily  
increase)

**SA**  
**1,823,246**  
(+864 daily  
increase)

**ACT**  
**792,134**  
(+896 daily  
increase)

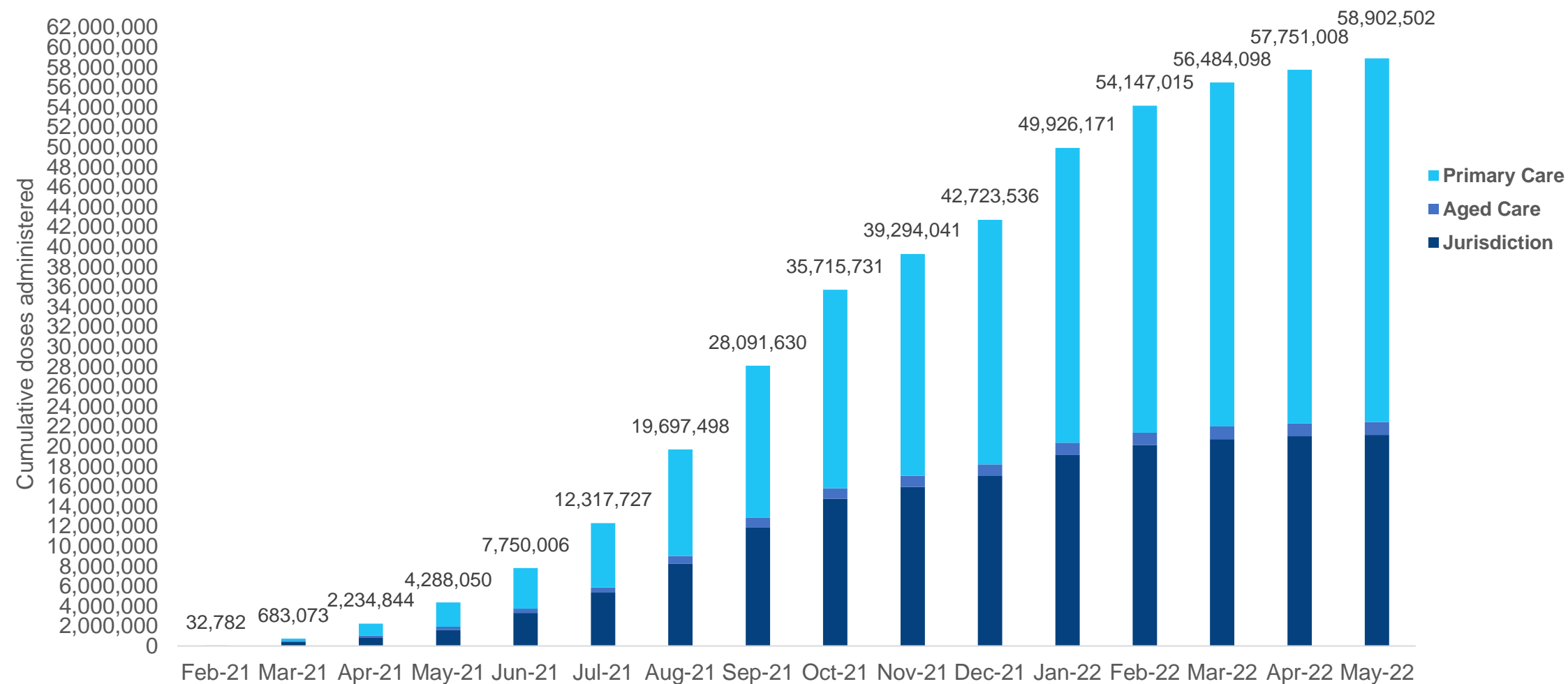
**NT**  
**344,293**  
(+221 daily  
increase)

\*Sourced from the Australian Immunisation Register. Numbers are calculated as difference in daily cumulative reported numbers to allow for historical corrections.

Source: Australian Immunisation Register

# Cumulative doses administered by channel

Data as at:  
24 May 2022



Source: Australian Immunisation Register

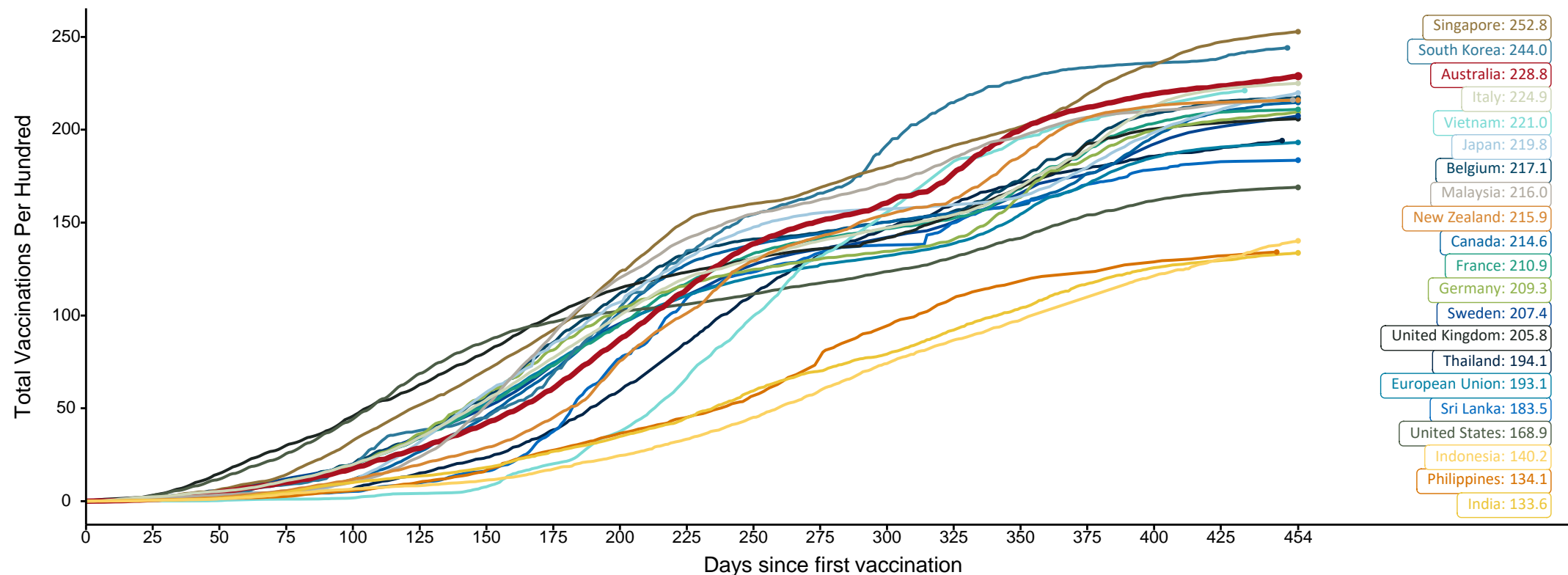
# Doses at equivalent stages of rollout (Day 454)

Data as at:  
22 May 2022  
Updated weekly

Australia's COVID-19  
Vaccine Roadmap

The x-axis is truncated at the length of Australia's vaccination program. Countries with intermittent reporting have had their doses per 100 imputed to Australia's current stage of rollout. Israel excluded as it is beyond scale of the graph

Cumulative doses administered (22 May): **58,784,623**

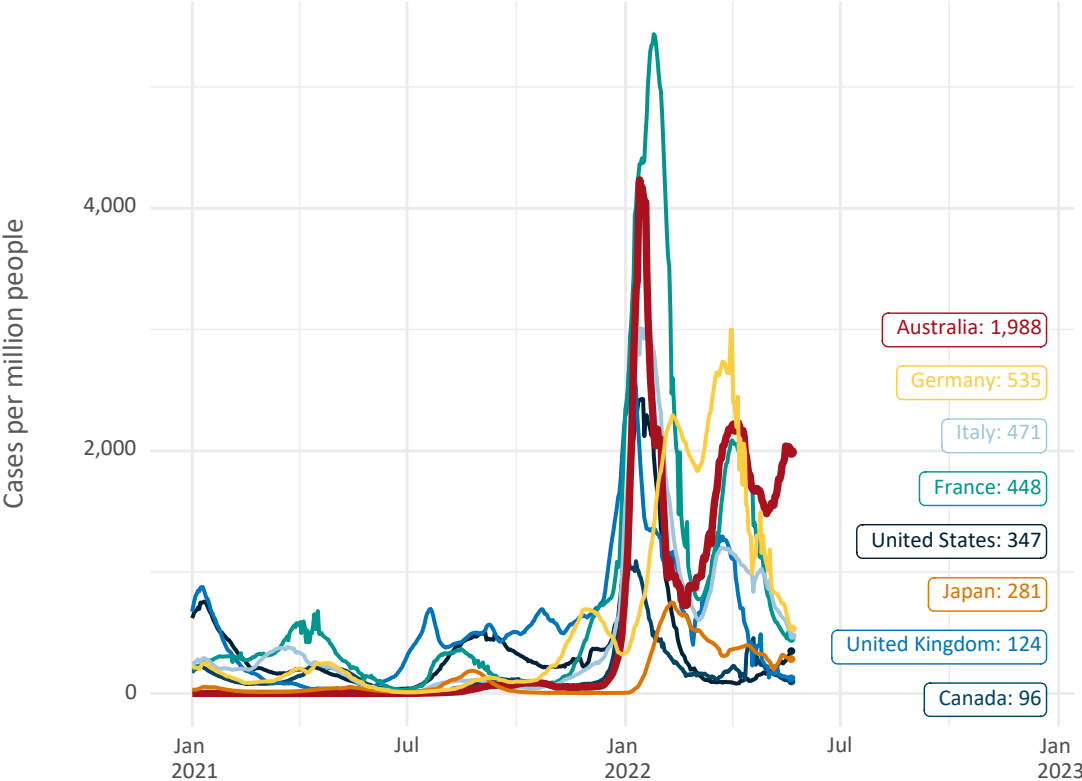


Note: From 11 January 2022, data for Australia includes all doses administered to people 5 and over. Prior to 11 January, data was for 12 and over.  
Source: Department of Health (Australia), Our World in Data (international)  
Latest data: 22 May

# International data – COVID-19

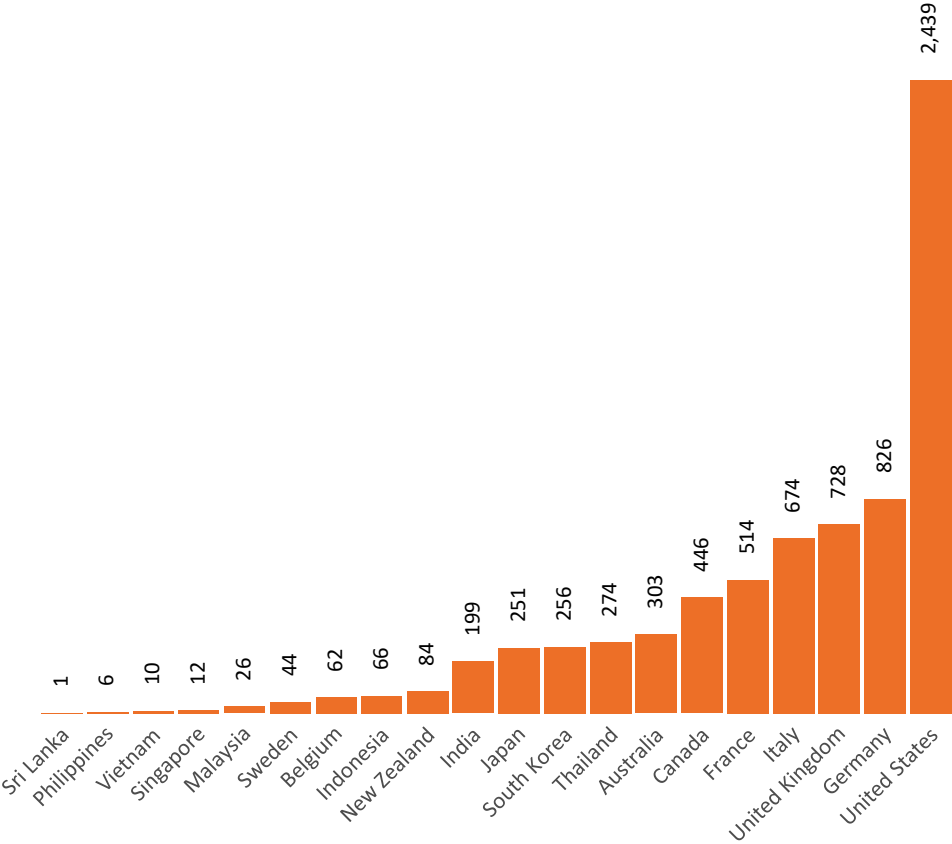
Data as at:  
22 May 2022  
Updated weekly

New daily cases per million since 2021, Australia and G7 countries  
Smoothed - 7 day average



Source: OWID  
Data downloaded: 23 May 2022 10:09  
Latest data: 22 May 2022

COVID-19 deaths in past 7 days - Australia and select countries



Source: OWID  
Data downloaded: 23 May 2022 10:09  
Latest data: 22 May 2022

# Pandemic Response Payments

Australia's COVID-19  
Vaccine Roadmap

Data as at midnight:  
22 May 2022 (updated weekly)



**2.38 million**

People have received at least one  
COVID Disaster Payment  
(including ISP200)

**8.12 million**

Claims granted across  
three different payments

**\$14.54 billion**

Paid Out as at 22 May 2022



Claims Received Digitally

**93%**

Three payments available:

**COVID Disaster Payment**

assisting during a lockdown event  
in a Commonwealth hotspot.

**Income Support Payment \$200**

for income support recipients who  
lost at least 8 hours of work.

**Pandemic Leave Disaster**

for those who have to self-isolate,  
quarantine or care.

For more information visit:

[www.servicesaustralia.gov.au](http://www.servicesaustralia.gov.au)



**COVID Disaster Payment:** 5.89 million claims received - 2.19 million individuals paid a total of \$12.59 billion.

**\$200 Income Support Payment:** 353,000 claims received - 183,000 individuals paid a total of \$268.92 million.

**Pandemic Leave Disaster Payment:** 2.40 million claims received - 1.43 million individuals paid a total of \$1.67 billion.

## COVID-19 DISASTER PAYMENTS

