



Australian Government
Operation COVID Shield

COVID-19 Vaccine Roll-out

24 May 2022

Data as at:
23 May 2022

Total vaccine doses



58,840,032 total vaccine doses administered nationally as at 23 May

+55,409 recorded in the last 24 hours



20,056,775

people have had at least one dose

>95%

of people over the age of 16 have had at least one dose



19,723,507

people are fully vaccinated

>95%

of people over the age of 16 are fully vaccinated



13,641,086

people over the age of 16 who have received three or more doses

NSW
18,248,719
(+17,367 daily increase)

VIC
15,456,758
(+13,497 daily increase)

QLD
11,126,729
(+9,909 daily increase)

WA
6,477,979
(+6,040 daily increase)

TAS
1,330,625
(+1,531 daily increase)

SA
4,074,338
(+4,771 daily increase)

ACT
1,539,481
(+1,857 daily increase)

NT
585,403
(+437 daily increase)

*Administration state breakdown indicates state in which a vaccine was administered

**Overall dose count includes instances of more than three doses per person in a small number of cases.

Booster Vaccinations

Data as at:
23 May 2022



217,818

Indigenous people who have received three or more doses

53.2%

of eligible population (409,263)



164,908

Aged Care Residents who have received three or more doses##

93.4%

of eligible population (176,567)



187,522

NDIS participants

who have received three or more doses#

74.4%

of eligible population (252,000)

21,467

NDIS residents

who have received three or more doses#

88.8%

of eligible population (24,000)



13,641,086

total people who have received three or more doses

+9,731 daily increase

69.8% of eligible population (19,553,546)

	Number of People	Daily Increase	% of Eligible
NSW	4,162,050	2,862	67.1%
VIC	3,644,088	2,287	72.0%
QLD	2,360,803	1,668	62.9%
WA	1,677,657	1,516	83.2%
SA	969,476	863	73.0%
TAS	311,733	225	72.3%
ACT	270,201	119	78.1%
NT	128,634	160	77.0%

116,444

doses administered to persons residing in other territories or with missing residential information

*People may belong to multiple groups and could be represented in the above breakdowns multiple times.

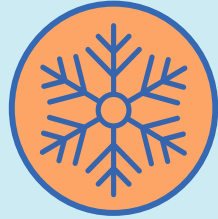
NDIS participants data as at 21 May 2022.

Aged Care Residents data as at 23 May 2022.

Source: Australian Immunisation Register

Winter / Fourth Doses

Data as at:
23 May 2022



1,265,415 total people (16+) who have received four or more doses

+41,453 daily increase

	Number of People 16+	Daily Increase
ACT	27,883	657
NSW	412,771	13,381
NT	5,730	186
QLD	239,870	7,750
SA	101,201	3,645
TAS	35,953	1,247
VIC	316,872	10,176
WA	119,363	4,247

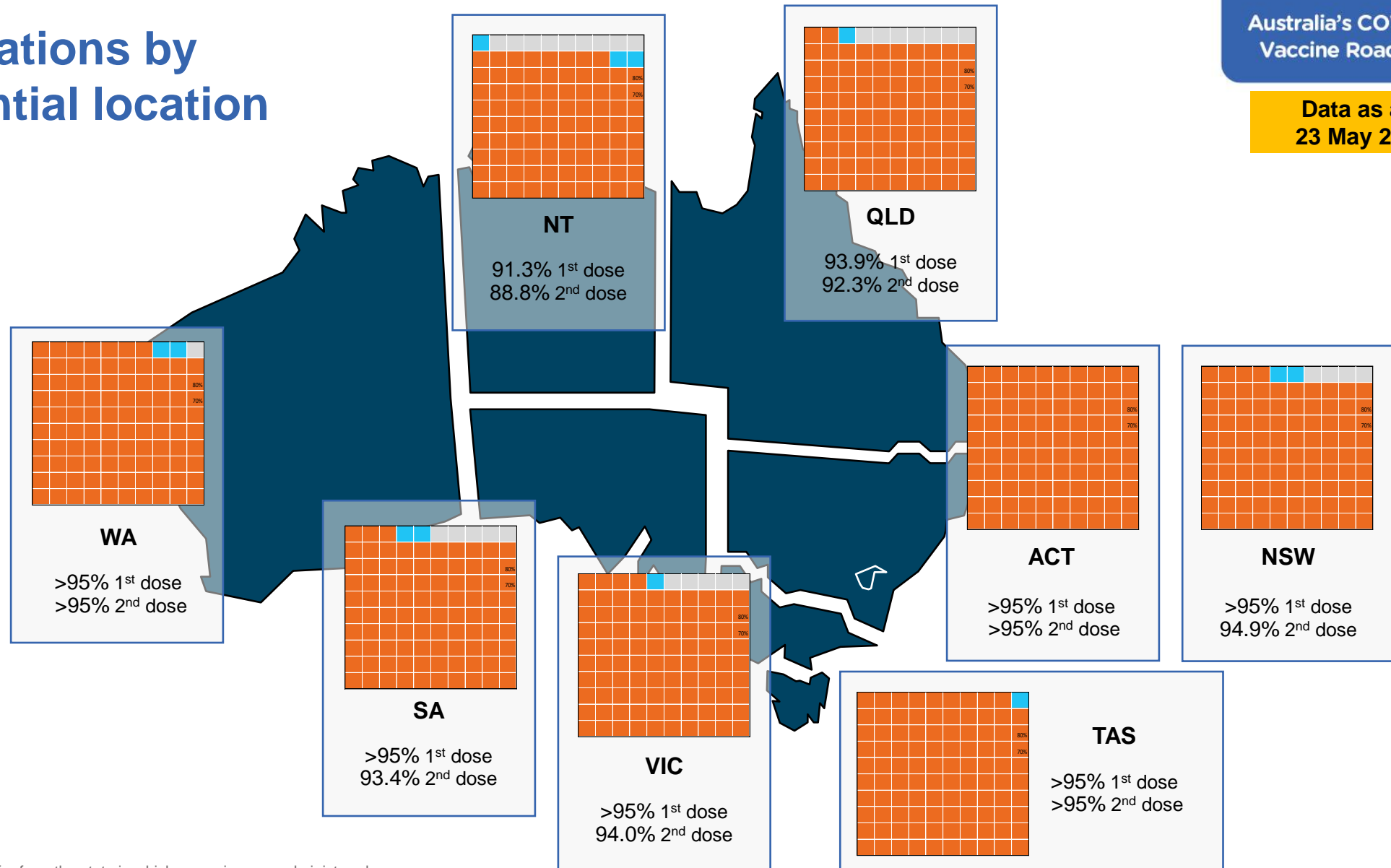
5,772

doses administered to persons
residing in other territories or with
missing residential information

Source: Australian Immunisation Register

Data as at:
23 May 2022

Vaccinations by residential location



*Residential state may differ from the state in which a vaccine was administered

Commonwealth and Jurisdiction vaccine doses administered

Data as at:
23 May 2022



58,840,032 total vaccine doses administered nationally as at 23 May

+ **55,409** recorded in the last 24 hours

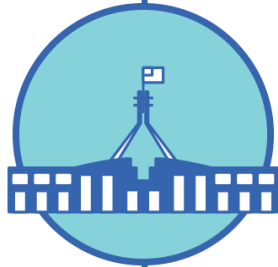


21,154,949

doses administered by state and territory facilities

+ **4,624**

recorded in the last 24 hours



37,685,083

doses administered by commonwealth facilities

+ **50,785**

recorded in the last 24 hours

36,393,337 total vaccine doses administered in primary care settings

1,291,746 total vaccine doses administered in aged care and disability settings

NSW	Jurisdictions	Commonwealth
Cumulative	5,120,759	13,127,960
Daily increase	790	16,577

VIC	Jurisdictions	Commonwealth
Cumulative	6,092,552	9,364,206
Daily increase	1,093	12,404

QLD	Jurisdictions	Commonwealth
Cumulative	3,848,325	7,278,404
Daily increase	319	9,590

WA	Jurisdictions	Commonwealth
Cumulative	2,512,131	3,965,848
Daily increase	684	5,356

TAS	Jurisdictions	Commonwealth
Cumulative	623,490	707,135
Daily increase	95	1,436

SA	Jurisdictions	Commonwealth
Cumulative	1,822,382	2,251,956
Daily increase	797	3,974

ACT	Jurisdictions	Commonwealth
Cumulative	791,238	748,243
Daily increase	662	1,195

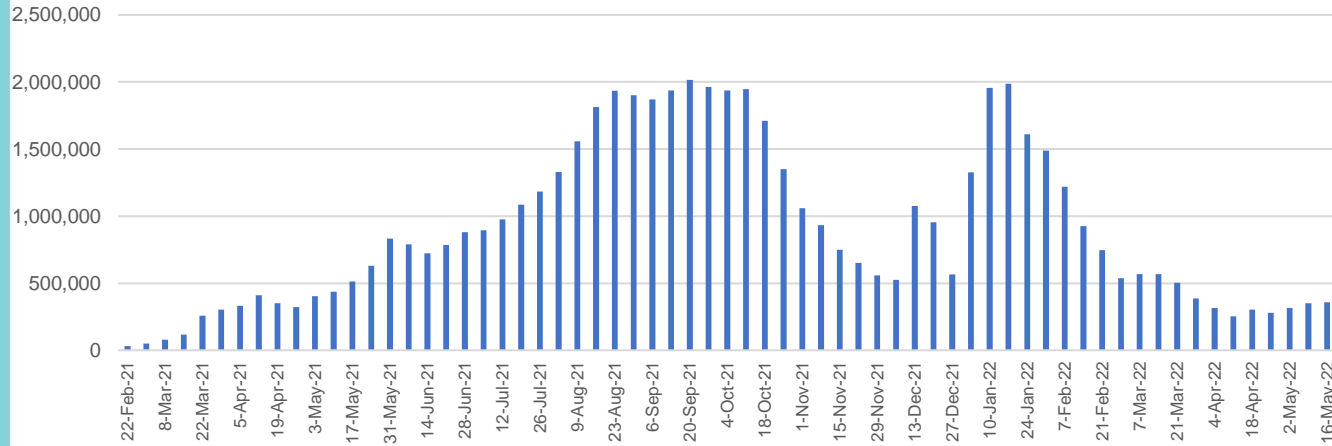
NT	Jurisdictions	Commonwealth
Cumulative	344,072	241,331
Daily increase	184	253

Vaccine milestone charts

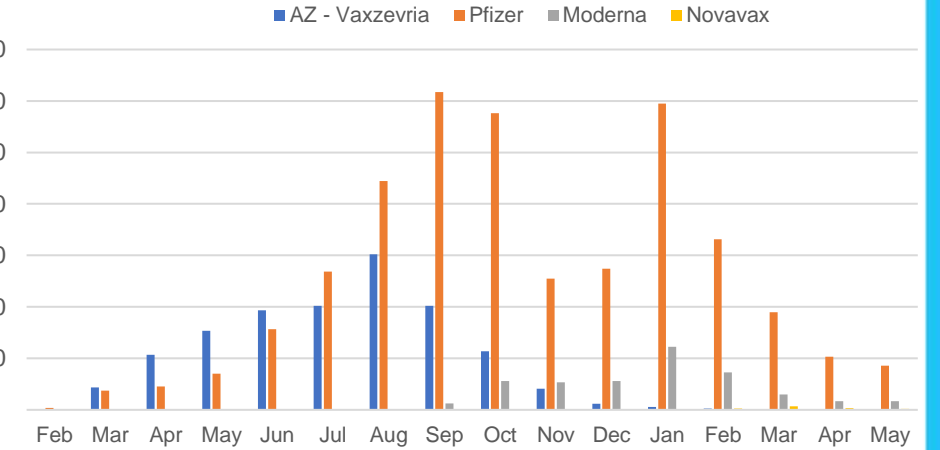
Data as at:
23 May 2022

Australia's COVID-19
Vaccine Roadmap

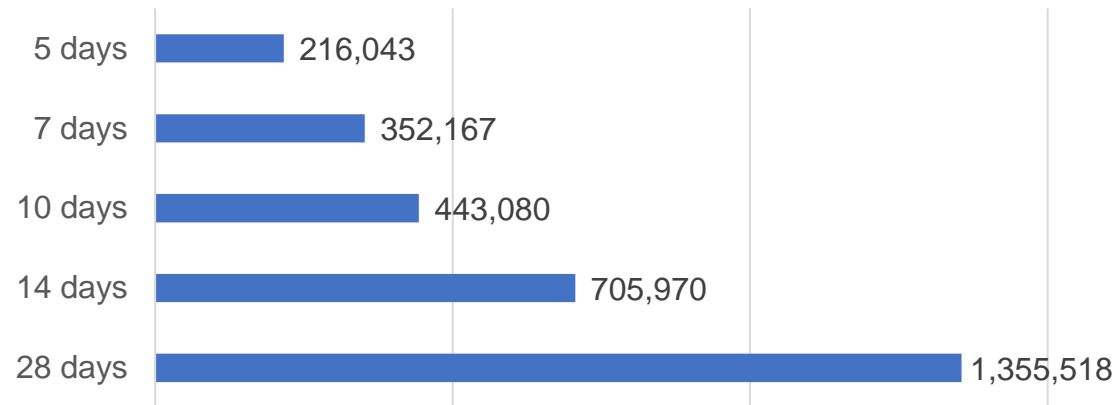
Doses Administered by Week



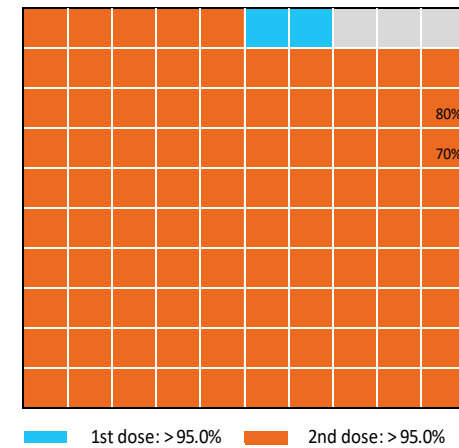
Doses by administration month and vaccine type



Doses Reported



Eligible population percentage coverage



*Each square represents 1% of the national population. Squares are filled as milestones are achieved.

*Sourced from the Australian Immunisation Register.

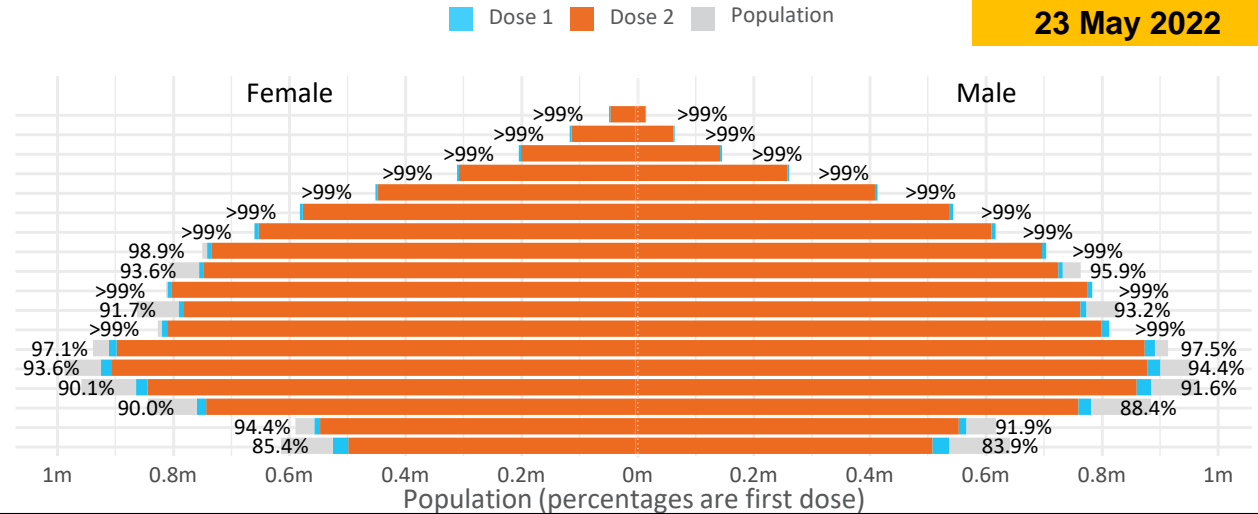
Doses by age and sex

First and second doses by age and sex

	16+	50+	12-15	5-11
Dose 1	97.27% (20,056,775 doses / 20,619,959 people)	>99% (8,887,986 doses / 8,749,703 people)	84.65% (1,053,027 doses / 1,243,990 people)	52.71% (1,199,915 doses / 2,276,638 people)
Dose 2	95.65% (19,723,507 doses / 20,619,959 people)	>99% (8,781,395 doses / 8,749,703 people)	80.21% (997,810 doses / 1,243,990 people)	38.41% (874,475 doses / 2,276,638 people)

Data as at: 23 May 2022

Age	Dose 1	Dose 2
95+	63,526 (>99%)	60,120 (>99%)
90-94	179,287 (>99%)	173,717 (>99%)
85-89	347,132 (>99%)	340,239 (>99%)
80-84	567,521 (>99%)	560,279 (>99%)
75-79	857,910 (>99%)	849,533 (>99%)
70-74	1,116,405 (>99%)	1,105,295 (>99%)
65-69	1,266,642 (>99%)	1,252,252 (>99%)
60-64	1,433,654 (>99%)	1,417,476 (98.7%)
55-59	1,475,776 (94.9%)	1,459,254 (93.8%)
50-54	1,580,133 (>99%)	1,563,230 (>99%)
45-49	1,551,323 (92.5%)	1,532,841 (91.4%)
40-44	1,620,378 (>99%)	1,596,419 (98.5%)
35-39	1,790,315 (97.6%)	1,758,367 (95.8%)
30-34	1,816,616 (94.4%)	1,775,046 (92.3%)
25-29	1,743,363 (91.4%)	1,695,987 (89.0%)
20-24	1,532,766 (89.5%)	1,493,311 (87.2%)
16-19	1,114,028 (93.2%)	1,090,141 (91.2%)
12-15	1,053,027 (84.6%)	997,810 (80.2%)



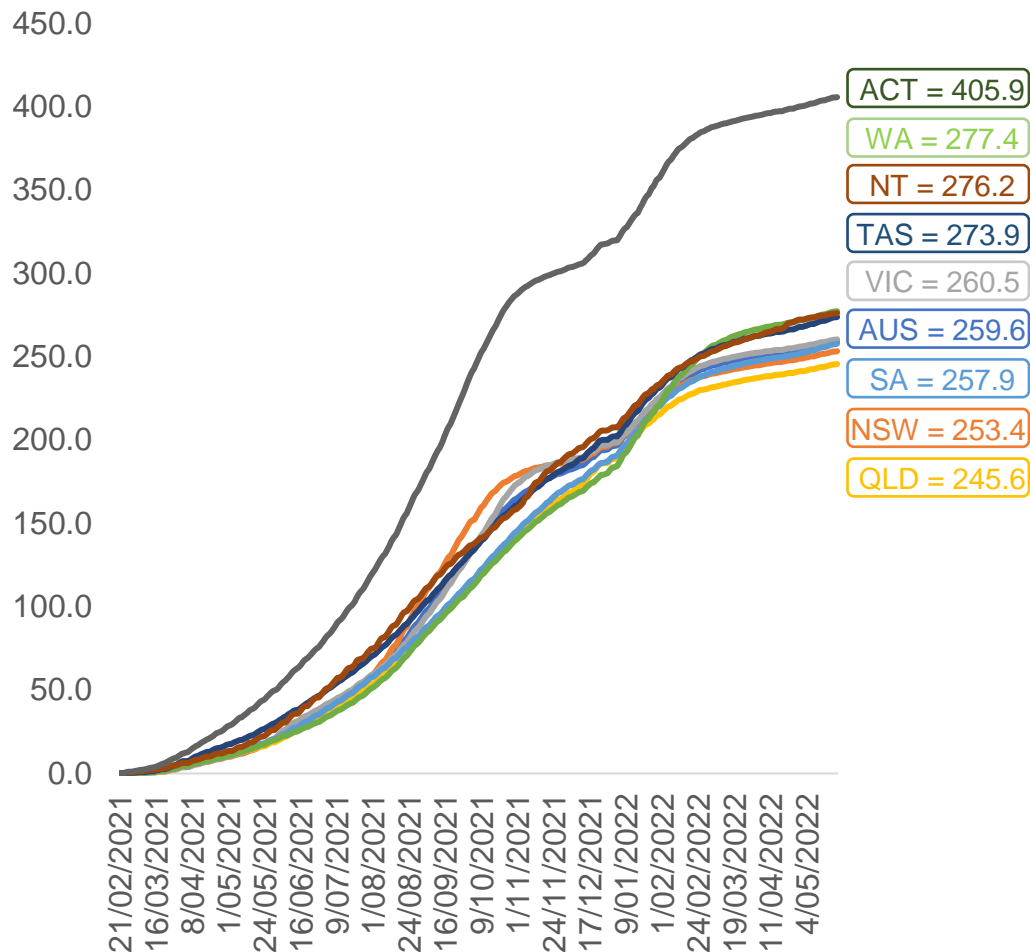
	AUS	ACT	NSW	NT	QLD	SA	TAS	VIC	WA
16 and over - dose 1	20,056,775	352,704	6,327,238	173,939	3,860,547	1,375,048	444,891	5,160,486	2,095,311
16 and over - dose 2	19,723,507	347,089	6,230,756	169,246	3,796,881	1,345,808	435,855	5,083,484	2,064,087
16 and over - population	20,619,959*	344,037	6,565,651	190,571	4,112,707	1,440,400	440,172	5,407,574	2,114,978
16 and over % with dose 1	97.27%	>99%	96.37%	91.27%	93.87%	95.46%	>99%	95.43%	>99%
16 and over % with dose 2	95.65%	>99%	94.90%	88.81%	92.32%	93.43%	>99%	94.01%	97.59%
5 to 11 - dose 1	1,199,915	31,916	358,025	13,235	208,288	84,109	28,624	326,435	141,451
5 to 11 - dose 2	874,475	26,864	265,697	8,373	146,366	61,486	22,795	239,219	99,133
5 to 11 - population	2,276,638	39,789	716,460	24,750	478,731	148,816	45,033	578,499	244,154
5 to 11 % with dose 1	52.71%	80.21%	49.97%	53.47%	43.51%	56.52%	63.56%	56.43%	57.94%
5 to 11 % with dose 2	38.41%	67.52%	37.08%	33.83%	30.57%	41.32%	50.62%	41.35%	40.60%
12 to 15 - dose 1	1,053,027	20,092	323,852	10,818	206,429	68,354	22,923	275,134	115,832
12 to 15 - dose 2	997,810	19,558	309,577	9,741	193,251	64,703	21,819	263,426	107,369
12 to 15 - population	1,243,990	19,693	390,330	13,060	270,146	82,747	26,308	308,611	132,869
12 to 15 % with dose 1	84.65%	>99%	82.97%	82.83%	76.41%	82.61%	87.13%	89.15%	87.18%
12 to 15 % with dose 2	80.21%	>99%	79.31%	74.59%	71.54%	78.19%	82.94%	85.36%	80.81%

*National population will not equal sum of listed jurisdictions due to a small number of people counted in national population residing in some 'other' territories. Sum of state doses will not add to national total as some records are unable to be geocoded to a State or Territory. Doses sourced from Australian Immunisation Register, population from ABS ERP June 2020

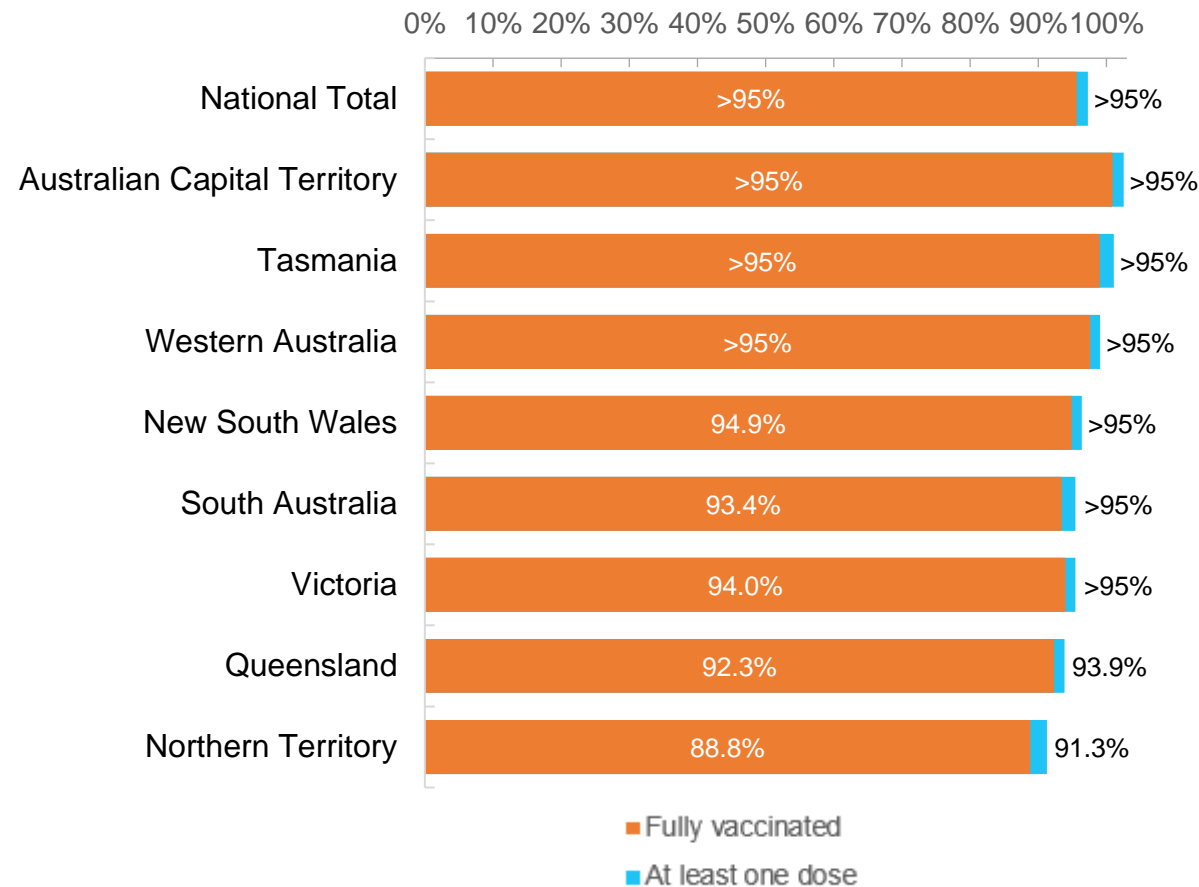
Data as at:
23 May 2022

Vaccinations by location

Cumulative total doses administered vs eligible state populations*



First and Second Doses by residential location



*Not an indication of percentage vaccinated, numbers will exceed 100 due to multiple doses required per person of the population. All doses are included for those aged 12 and above, and are based on vaccination provider location.

Aboriginal and Torres Strait Islander peoples

Number of people vaccinated

Data as at:
17 May 2022
Updated weekly

Australia's COVID-19
Vaccine Roadmap



441,580

people over the age of 16
have had at least one dose

84.9%

of people over the age of 16
have had at least one dose



422,736

people over the age of 16
are fully vaccinated

81.2%

of people over the age of 16 are
fully vaccinated



People aged 12 – 15 years

48,427

42,621

68.4%

At least one dose

60.2%

Fully vaccinated

178 Aboriginal community controlled health services (ACCHS)

0#	50	27	44	12	3	21	21
ACT	NSW	NT	QLD	SA	TAS	VIC	WA

Medicare Address State ^{##}	Individuals Dose 1	Individuals Dose 1 %	Individuals Dose 2	Individuals Dose 2 %
Australian Capital Territory	4,799	91.3%	4,679	89.1%
New South Wales	135,796	87.3%	132,716	85.3%
Northern Territory	41,509	89.6%	39,430	85.1%
Queensland	116,047	81.7%	110,581	77.9%
South Australia	19,990	80.4%	18,582	74.7%
Tasmania	13,916	88.8%	13,509	86.2%
Victoria	35,635	90.4%	34,857	88.4%
Western Australia	53,672	86.6%	49,818	80.4%
Unknown/Other Territories	20,216	69.3%	18,564	63.6%
Totals	441,580	84.9%	422,736	81.2%

Source: Australian Immunisation Register

*Identifying as Aboriginal and Torres Strait Islander is optional and the estimated population may be under reported.

**Includes all Aboriginal and Torres Strait Islander peoples who have received a vaccination, not limited to those administered in an ACCHS setting

#ACCHS in the ACT are currently operating as a Commonwealth Vaccine Clinics so not included to avoid double counting

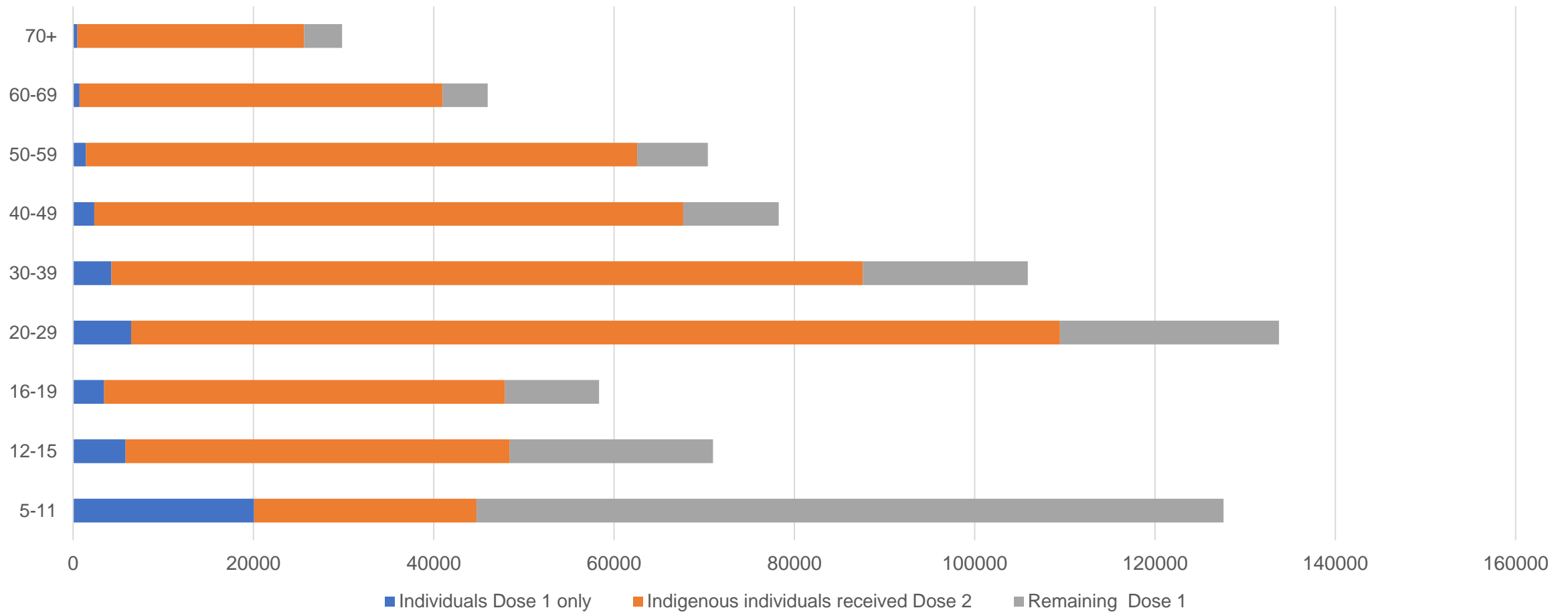
##The above table includes all identified Aboriginal and Torres Strait Islander people who are aged 16 and above by their state of residence.

Aboriginal and Torres Strait Islander peoples

Number of people vaccinated by age

Data as at:
17 May 2022
Updated weekly

Australia's COVID-19
Vaccine Roadmap



Source: Australian Immunisation Register

Commonwealth primary care

Data as at:
23 May 2022

Australia's COVID-19
Vaccine Roadmap



Primary care vaccine administration sites

5,725	128	178	3,598
GPs	CVCs	ACCHS	Pharmacies



36,393,337 total vaccine doses administered
primary care settings as at 23 May
+ 49,865 recorded in the last 24 hours

Primary care vaccinations by provider type

	Doses administered	Daily increase	7 day increase
General Practice* includes other Commonwealth	29,196,204	35,973	223,227
Pharmacy	7,197,133	13,892	83,997



312,964

doses administered to persons
residing in other territories or with
missing residential information

*General practice includes Commonwealth Vaccination Clinics, Aboriginal Community Health Centres, Royal Flying Doctor Service and other Commonwealth vaccination facilities

Source: Australian Immunisation Register

Data as at:
23 May 2022

Commonwealth aged care and disability doses administered



1,291,746 (+ 920 last 24 hours)

Total vaccine doses administered in aged care and disability facilities as at 23 May

Number of doses administered as part of the Commonwealth aged and disability care rollout

NSW
564,104
(+318 daily increase)

VIC
241,998
(+457 daily increase)

QLD
205,416
(+58 daily increase)

WA
109,567
(+35 daily increase)

TAS
23,454
(<10 daily increase)

SA
84,608
(<10 daily increase)

ACT
17,427
(<10 daily increase)

NT
7,657
(<10 daily increase)

37,515

doses administered to persons residing in other territories or with missing residential information

*Sourced from the Australian Immunisation Register. Includes all persons vaccinated at participating residential aged care, disability and related industry settings.

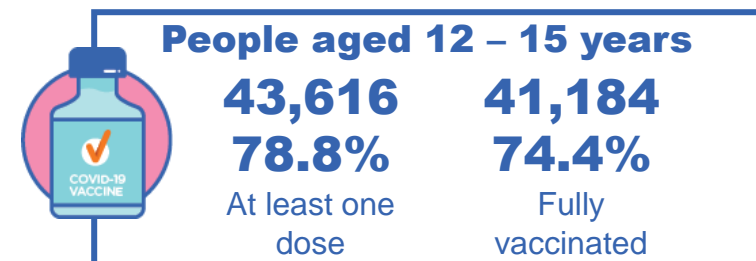
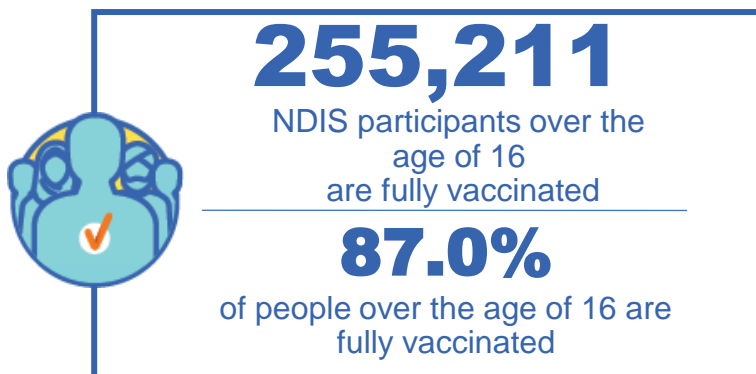
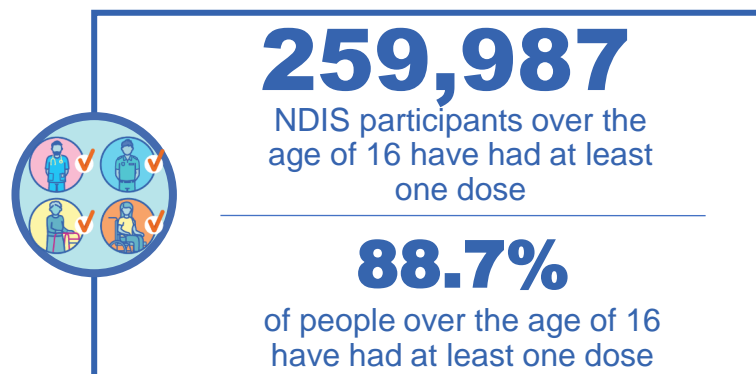
**State level breakdown indicates the residential location and may not align to the state in which the vaccination occurred.

Source: Australian Immunisation Register

National Disability Insurance Scheme (NDIS) reported vaccinations

Data as at:
19 May 2022
Updated weekly

Australia's COVID-19
Vaccine Roadmap



NDIS participant vaccinations

	People aged 16+ with at least one dose	People aged 16+ fully vaccinated	% People aged 16+ with at least one dose	% People aged 16+ fully vaccinated
ACT	4,911	4,844	90.6%	89.3%
NSW	79,723	78,424	88.9%	87.4%
NT	2,247	2,181	78.8%	76.4%
QLD	51,361	50,389	87.3%	85.7%
SA	21,240	20,729	86.6%	84.5%
TAS	6,514	6,362	88.6%	86.5%
VIC	69,150	67,972	89.8%	88.3%
WA	24,841	24,310	90.2%	88.3%
National	259,987	255,211	88.7%	87.0%

Source: Linkage between National Disability Insurance Agency data and the Australian Immunisation Register. Total NDIS participant numbers as at 28 February. Australian Immunisation Register data as at 18 May. Includes all participants regardless of residence type.

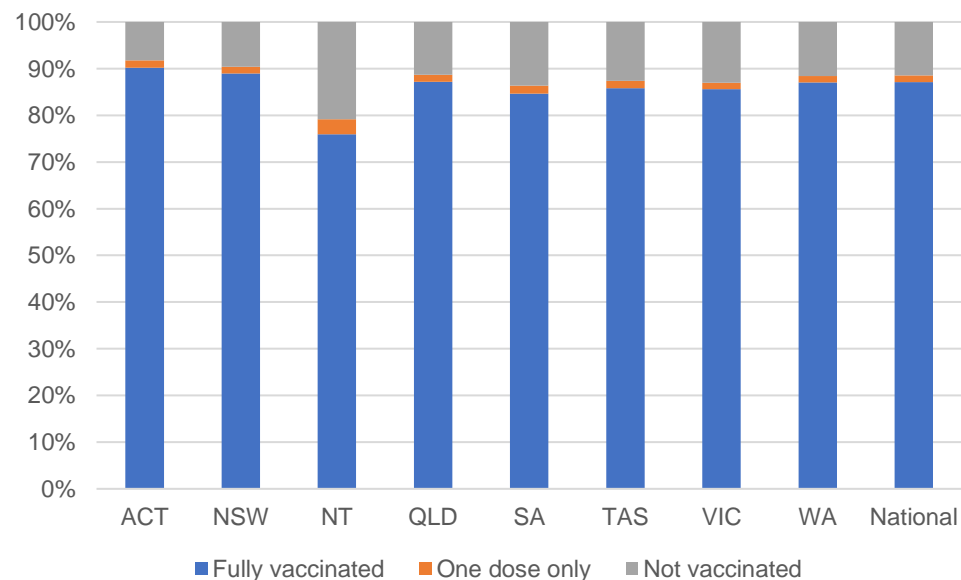
National Disability Insurance Scheme (NDIS) reported vaccinations

Data as at:
19 May 2022
Updated weekly

Australia's COVID-19
Vaccine Roadmap

NATIONAL	Total people with at least one dose	People fully vaccinated	Total number of individuals in cohort	% People with at least one dose	% People fully vaccinated
NDIS participants living in disability accommodation	20,771	20,430	23,352	88.9%	87.5%

NDIS participants in disability and aged care accommodation



Source: Linkage between National Disability Insurance Agency data and the Australian Immunisation Register. Includes participants residing in disability accommodation only.
Source: Total NDIS participant numbers as at 28 February. Participant data as at 18 May. Australian Immunisation Register data as at 18 May. Worker data as at 19 May.

NDIS workforce vaccinations

	NDIS workers with at least one dose	NDIS workers fully vaccinated	% NDIS workers with at least one dose	% NDIS workers fully vaccinated
NSW	125,387	120,302	98.2%	94.2%
VIC	117,076	113,562	98.3%	95.4%
QLD	70,482	69,519	97.7%	96.3%
WA	34,570	32,995	98.9%	94.4%
SA	35,846	33,534	98.6%	92.2%
TAS	10,904	10,672	99.1%	97.0%
ACT	11,990	11,964	98.9%	98.7%
NT	3,745	3,598	99.6%	95.7%
TOTAL	410,000	396,146	98.3%	95.0%

Source: the NDIS Commission has established a requirement for registered NDIS providers who provide intensive disability support services to report on the vaccination status of workers they employ, or otherwise engage, to deliver NDIS-funded supports and services, and who are required to be vaccinated in accordance with in-force state and territory public health orders. The statistics reflect data reported to the NDIS Commission by registered NDIS providers and should be considered indicative and subject to change

Note: Some registered NDIS providers are yet to report on the vaccination status of their workforce. The NDIS Commission is working with those providers around reporting requirements.

Remaining workers not included include those exempt from vaccination requirements, workers whose vaccination status is not yet verified by the provider (such as workers on leave) and provider reporting anomalies.

Residential aged care vaccination rollout

Residential aged care facilities status

176,555 **178,019**

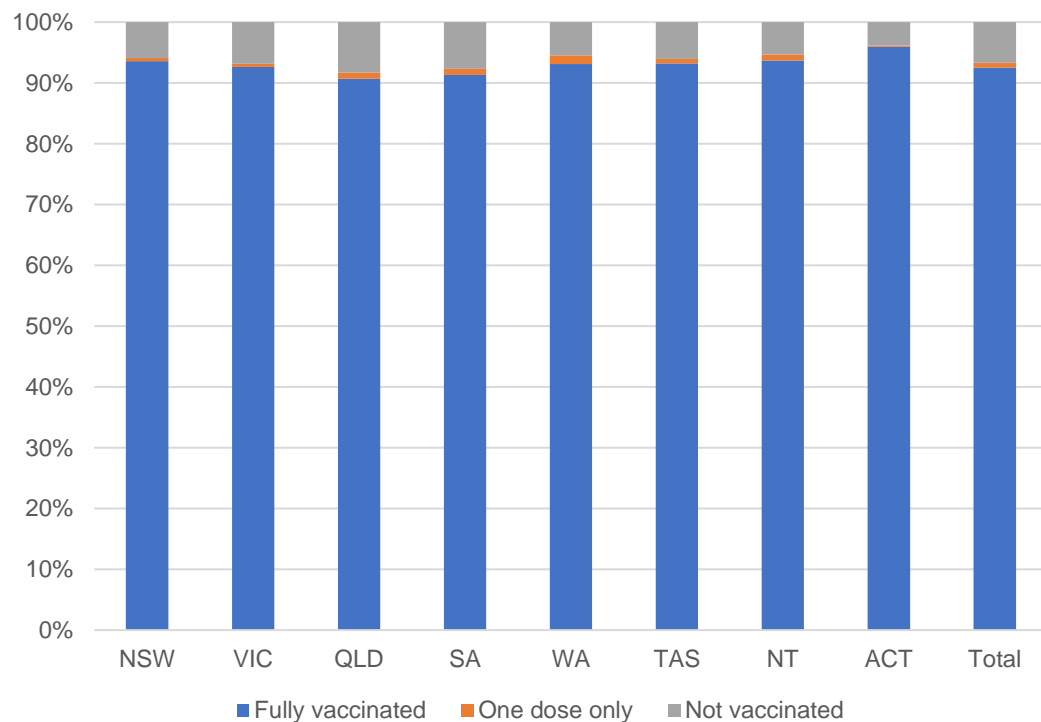
People fully vaccinated

People with at least one dose

Australia's COVID-19 Vaccine Roadmap

Data as at:
19 May 2022
Updated weekly

Aged care resident vaccinations



Aged care worker vaccinations

Jurisdictions	Total workers with at least one dose	Workers fully vaccinated	% Workers with at least one dose	% Workers fully vaccinated
NSW	78,112	78,103	99.8%	99.8%
VIC	68,509	68,508	98.7%	98.7%
QLD	47,668	47,663	99.2%	99.2%
SA	26,998	26,982	98.6%	98.5%
WA	24,494	24,492	100.0%	100.0%
TAS	7,499	7,499	100.0%	100.0%
NT	886	886	100.0%	100.0%
ACT	2,943	2,943	100.0%	100.0%
Total	257,109	257,076	99.3%	99.3%

Source: My Aged Care Portal vaccination progress

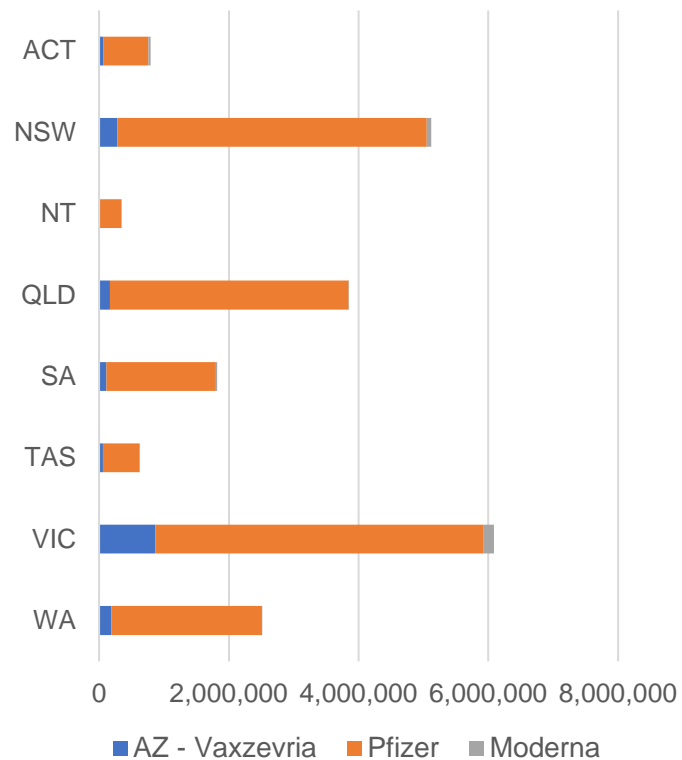
*Status updates are provided by facilities at least once per week. Reporting is updated Monday to Friday to encompass different facility updates being made on different days.

Data is sourced directly from Aged Care Service Providers and is not drawn or closely aligned with data from AIR due to inconsistencies and potential lags in uploading of records.

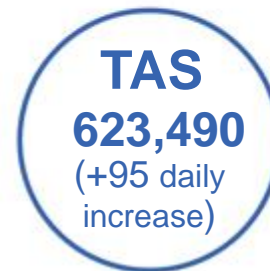
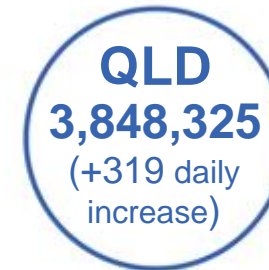
Data as at:
23 May 2022

Jurisdiction administered

Total vaccine doses administered in State and Territory clinics as at 23 May



21,154,949 total vaccine doses administered in State and Territory clinics as at 23 May
 + **4,624** recorded in the last 24 hours
 + **38,582** recorded in the last 7 days

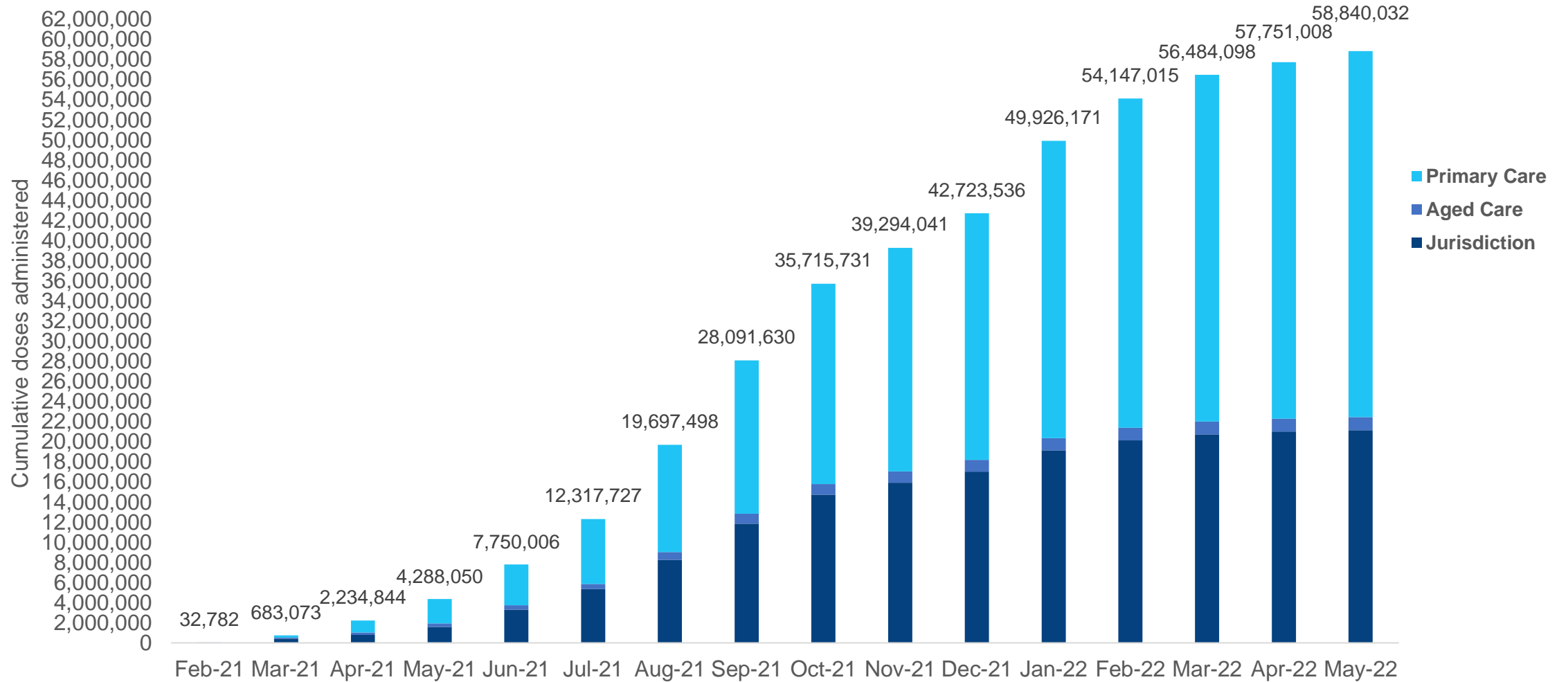


*Sourced from the Australian Immunisation Register. Numbers are calculated as difference in daily cumulative reported numbers to allow for historical corrections.

Source: Australian Immunisation Register

Cumulative doses administered by channel

Data as at:
23 May 2022



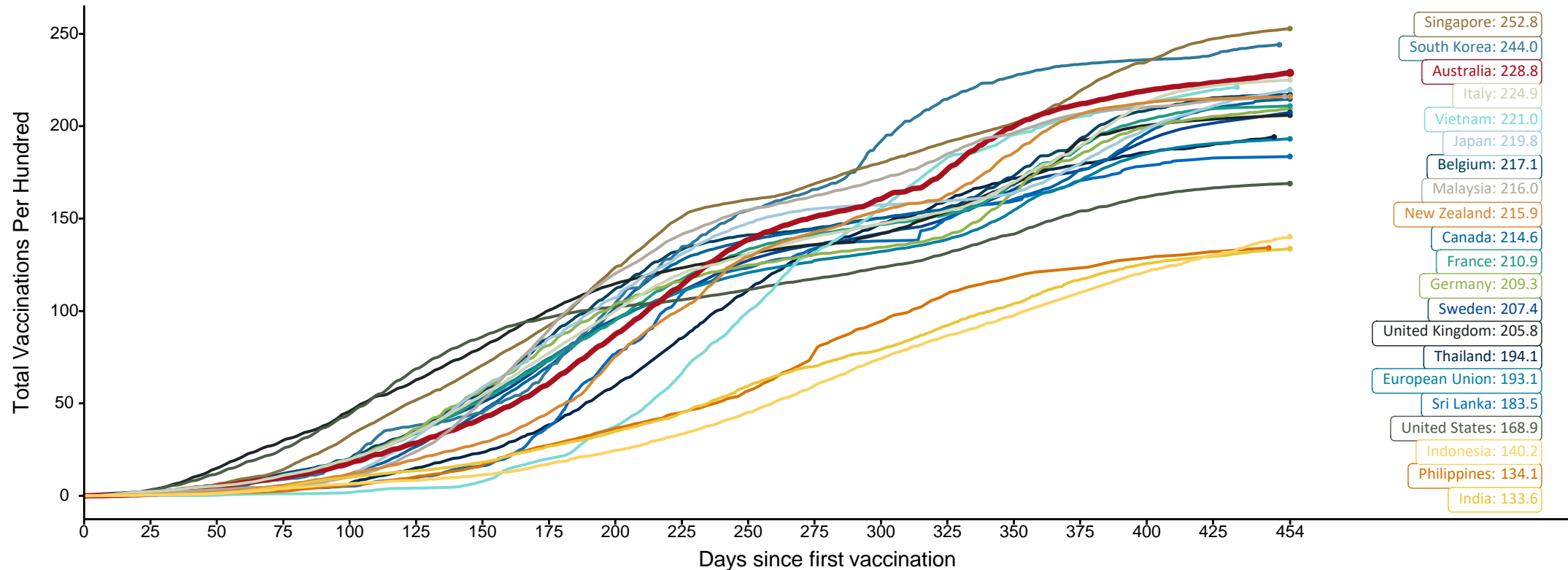
Source: Australian Immunisation Register

Doses at equivalent stages of rollout (Day 454)

Data as at:
22 May 2022
Updated weekly

The x-axis is truncated at the length of Australia's vaccination program. Countries with intermittent reporting have had their doses per 100 imputed to Australia's current stage of rollout. Israel excluded as it is beyond scale of the graph

Cumulative doses administered (22 May): **58,784,623**

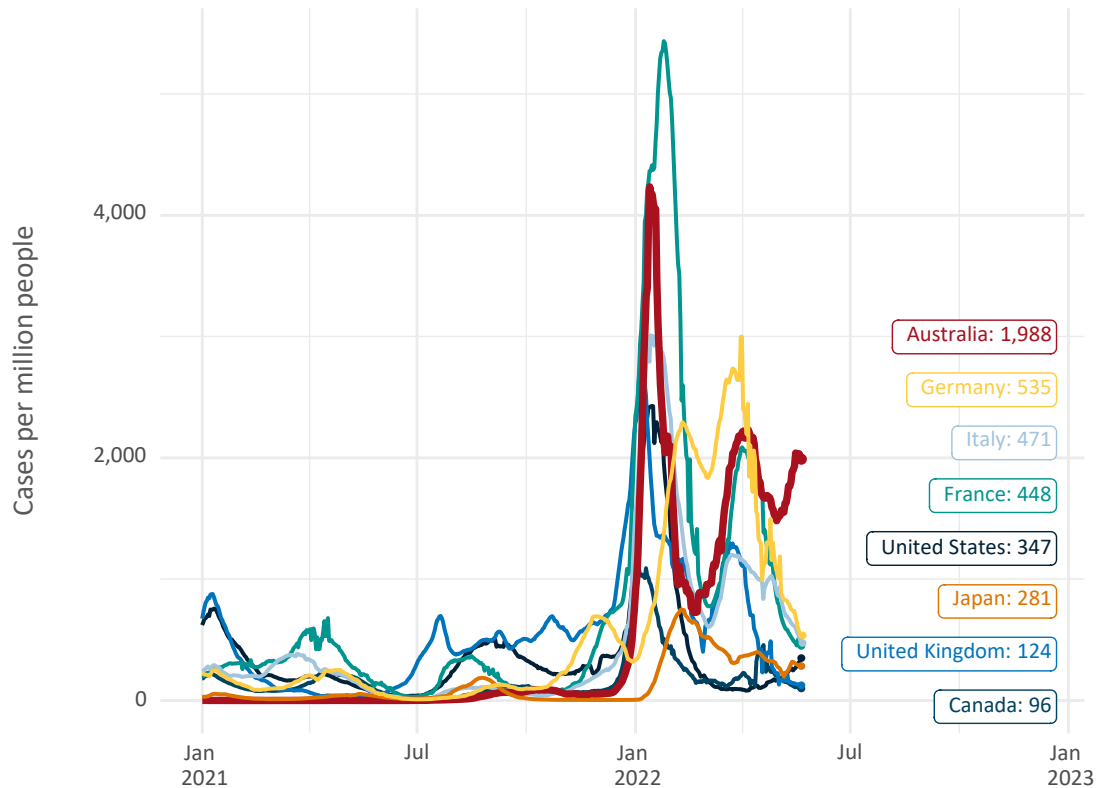


Note: From 11 January 2022, data for Australia includes all doses administered to people 5 and over. Prior to 11 January, data was for 12 and over.
Source: Department of Health (Australia), Our World in Data (international)
Latest data: 22 May

Data as at:
22 May 2022
Updated weekly

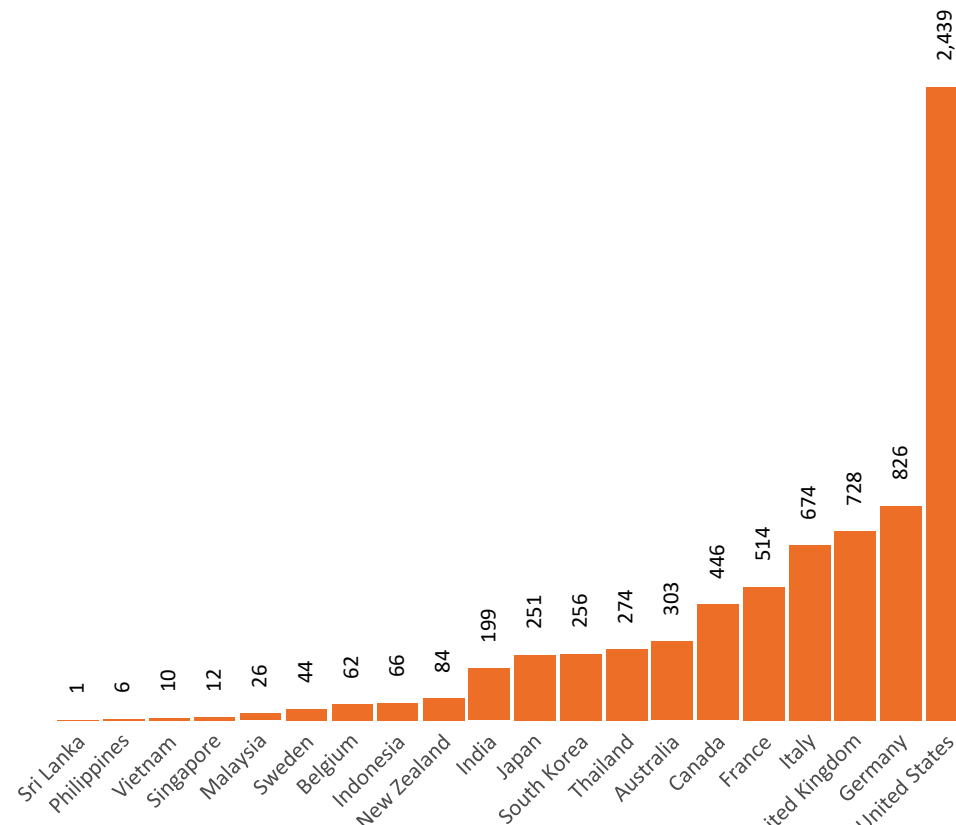
International data – COVID-19

New daily cases per million since 2021, Australia and G7 countries
Smoothed - 7 day average



Source: OWID
Data downloaded: 23 May 2022 10:09
Latest data: 22 May 2022

COVID-19 deaths in past 7 days - Australia and select countries



Source: OWID
Data downloaded: 23 May 2022 10:09
Latest data: 22 May 2022

Pandemic Response Payments

Data as at midnight:
22 May 2022 (updated weekly)

2.38 million

People have received at least one COVID Disaster Payment (including ISP200)

8.12 million

Claims granted across three different payments

\$14.54 billion

Paid Out as at 22 May 2022



Claims Received Digitally

93%

Three payments available:

COVID Disaster Payment

assisting during a lockdown event in a Commonwealth hotspot.

Income Support Payment \$200

for income support recipients who lost at least 8 hours of work.

Pandemic Leave Disaster

for those who have to self-isolate, quarantine or care.

For more information visit:

www.servicesaustralia.gov.au



COVID Disaster Payment: 5.89 million claims received - 2.19 million individuals paid a total of \$12.59 billion.

\$200 Income Support Payment: 353,000 claims received - 183,000 individuals paid a total of \$268.92 million.

Pandemic Leave Disaster Payment: 2.40 million claims received - 1.43 million individuals paid a total of \$1.67 billion.

COVID-19 DISASTER PAYMENTS

