



**Australian Government**  
**Operation COVID Shield**

# COVID-19 Vaccine Roll-out

23 May 2022

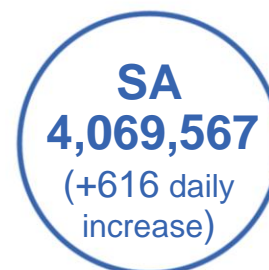
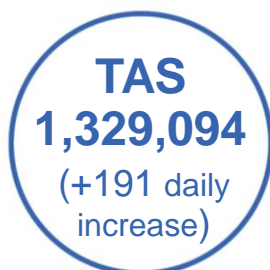
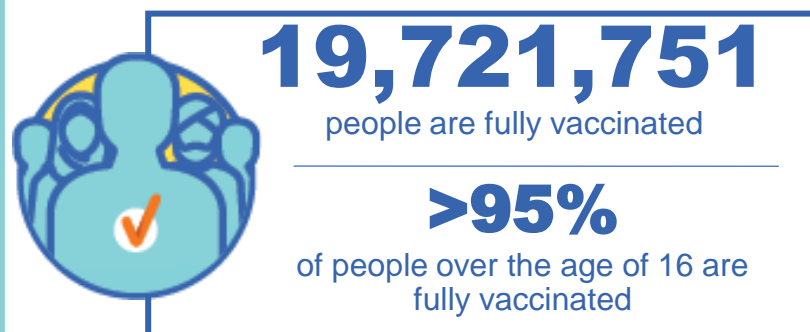
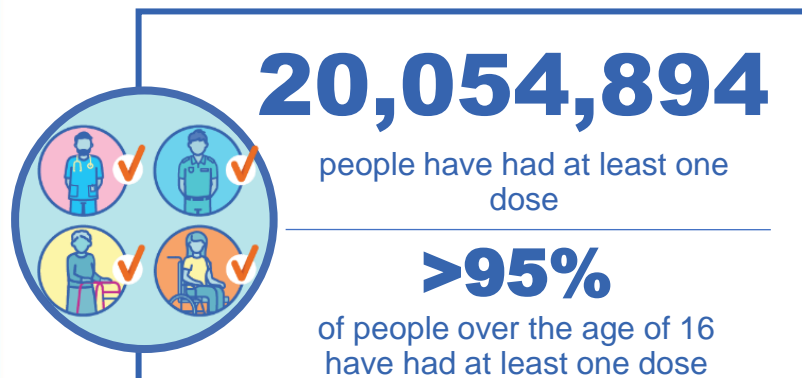
Data as at:  
22 May 2022

## Total vaccine doses



**58,784,623** total vaccine  
doses administered nationally as at 22 May

**+8,418** recorded in the last 24 hours



\*Administration state breakdown indicates state in which a vaccine was administered

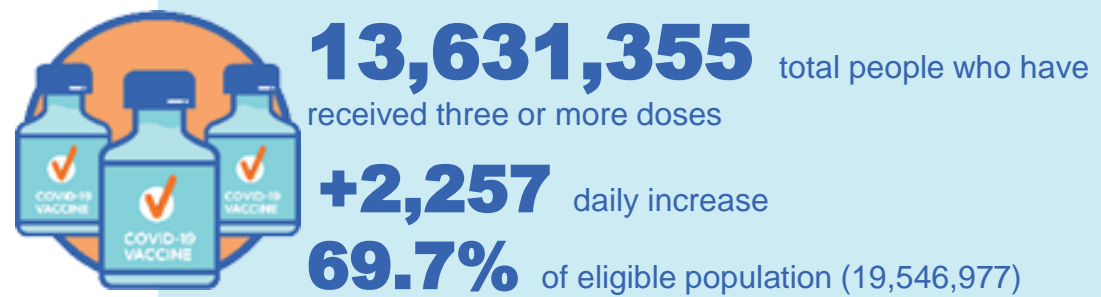
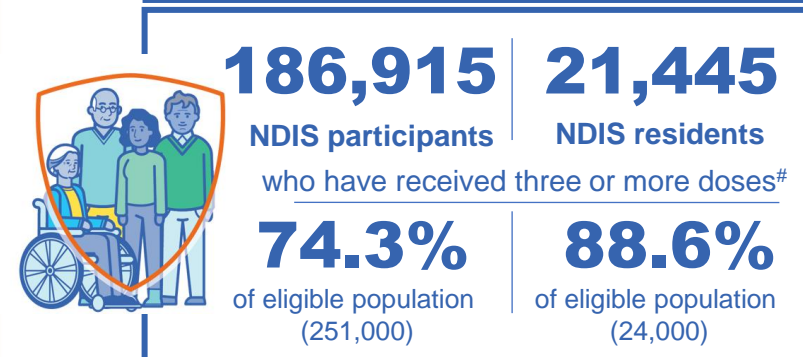
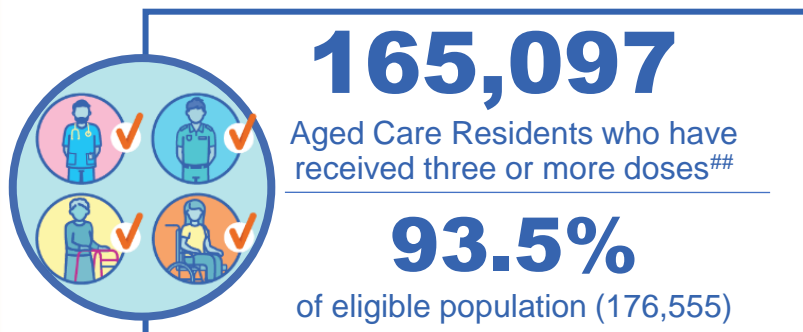
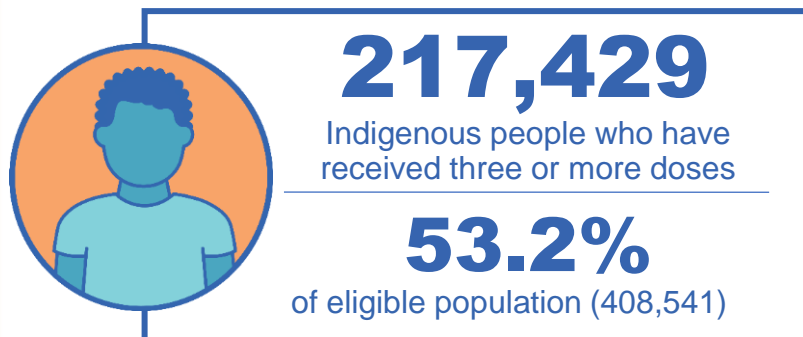
\*\*Overall dose count includes instances of more than three doses per person in a small number of cases.

Source: Australian Immunisation Register

# Booster Vaccinations

Australia's COVID-19  
Vaccine Roadmap

Data as at:  
22 May 2022



	Number of People	Daily Increase	% of Eligible
NSW	4,159,188	579	67.0%
VIC	3,641,801	593	72.0%
QLD	2,359,135	331	62.9%
WA	1,676,141	382	83.2%
SA	968,613	216	73.0%
TAS	311,508	48	72.3%
ACT	270,082	88	78.1%
NT	128,474	15	76.9%

\*People may belong to multiple groups and could be represented in the above breakdowns multiple times.  
# NDIS participants data as at 18 May 2022. ## Aged Care Residents data as at 20 May 2022.

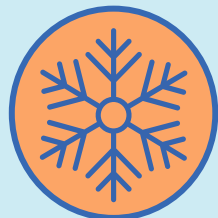
Source: Australian Immunisation Register

**116,413** doses administered to persons  
residing in other territories or with  
missing residential information

# Winter / Fourth Doses

Data as at:  
22 May 2022  
Updated weekly

Australia's COVID-19  
Vaccine Roadmap



**1,223,962** total people (16+) who have received four or more doses

**+265,205** weekly increase

	Number of People 16+	Weekly Increase
ACT	27,226	4,892
NSW	399,390	82,841
NT	5,544	881
QLD	232,120	49,996
SA	97,556	22,123
TAS	34,706	7,815
VIC	306,696	67,380
WA	115,116	28,093

**5,608** doses administered to persons  
residing in other territories or with  
missing residential information

Source: Australian Immunisation Register

# Vaccinations by residential location

Australia's COVID-19 Vaccine Roadmap

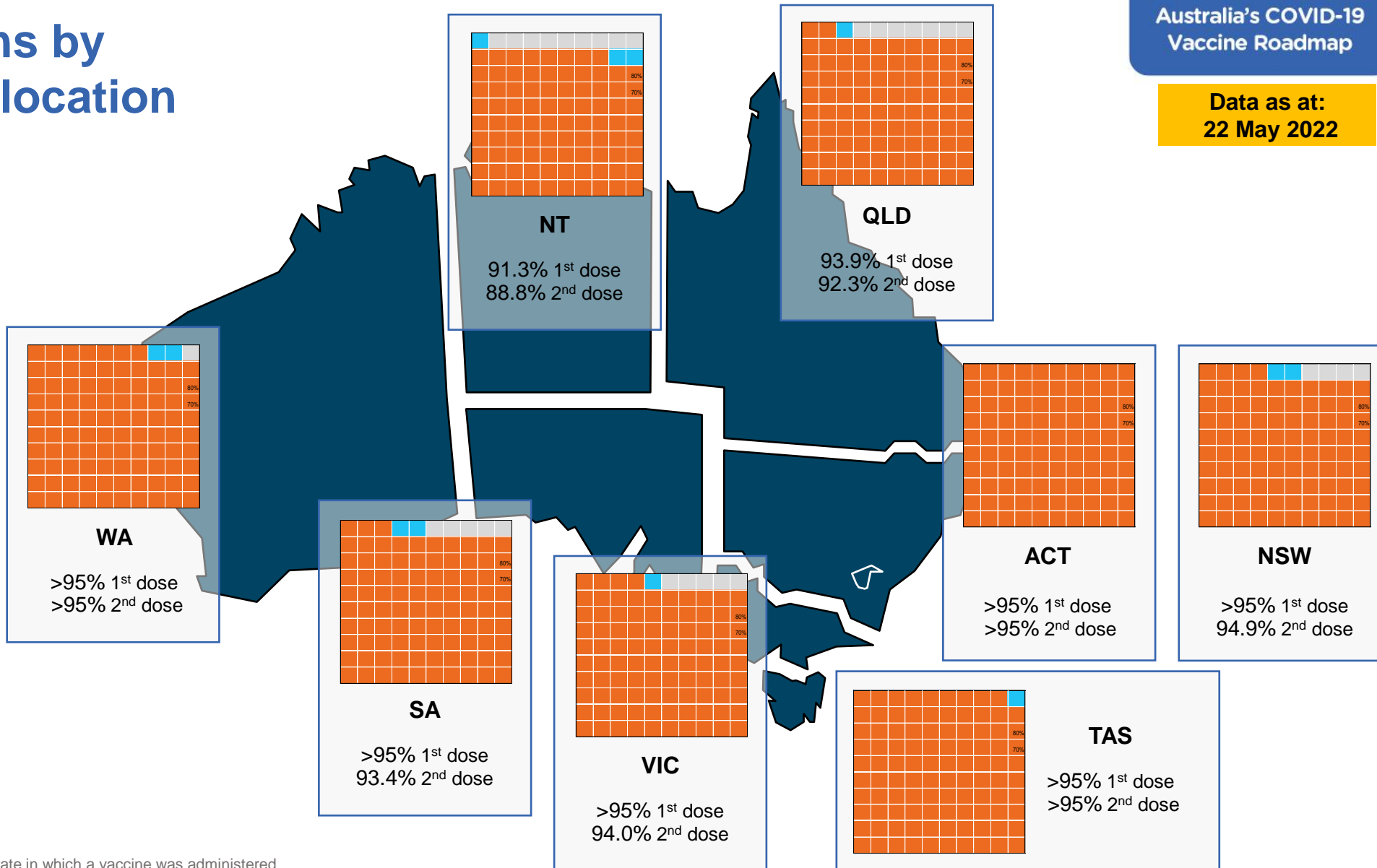
Data as at:  
22 May 2022

## First doses

Age	Today	4 weeks ago	8 weeks ago
16+	>95%	>95%	>95%
50+	>95%	>95%	>95%
70+	>95%	>95%	>95%

## Fully vaccinated

Age	Today	4 weeks ago	8 weeks ago
16+	>95%	>95%	>95%
50+	>95%	>95%	>95%
70+	>95%	>95%	>95%



\*Residential state may differ from the state in which a vaccine was administered

# Commonwealth and Jurisdiction vaccine doses administered

Data as at:  
22 May 2022



**58,784,623** total vaccine  
doses administered nationally as at 22 May

**+ 8,418** recorded in the last 24 hours



**21,150,325**

doses administered by state  
and territory facilities

**+ 1,985**

recorded in the last 24 hours

NSW	Jurisdictions	Commonwealth
Cumulative	5,119,969	13,111,383
Daily increase	402	1,893

TAS	Jurisdictions	Commonwealth
Cumulative	623,395	705,699
Daily increase	116	75

VIC	Jurisdictions	Commonwealth
Cumulative	6,091,459	9,351,802
Daily increase	495	1,984

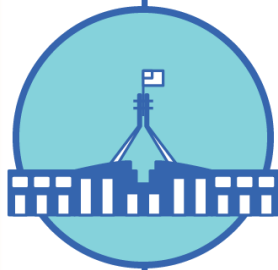
SA	Jurisdictions	Commonwealth
Cumulative	1,821,585	2,247,982
Daily increase	336	280

QLD	Jurisdictions	Commonwealth
Cumulative	3,848,006	7,268,814
Daily increase	58	1,229

ACT	Jurisdictions	Commonwealth
Cumulative	790,576	747,048
Daily increase	228	31

WA	Jurisdictions	Commonwealth
Cumulative	2,511,447	3,960,492
Daily increase	339	934

NT	Jurisdictions	Commonwealth
Cumulative	343,888	241,078
Daily increase	11	<10



**37,634,298**

doses administered by  
commonwealth facilities

**+ 6,433**

recorded in the last 24 hours

**36,343,472** total vaccine doses  
administered in primary care settings

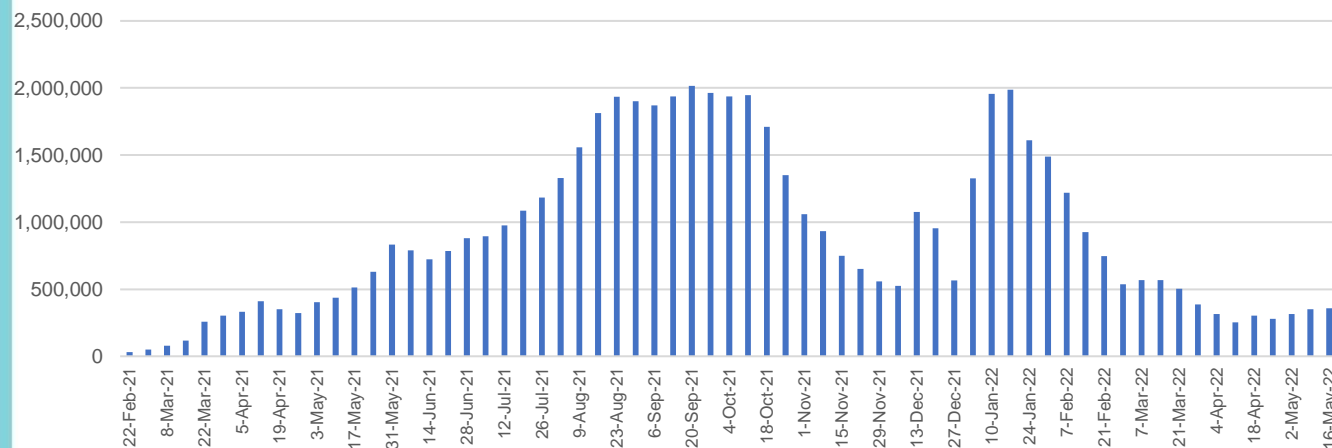
**1,290,826** total vaccine doses  
administered in aged care and disability  
settings

# Vaccine milestone charts

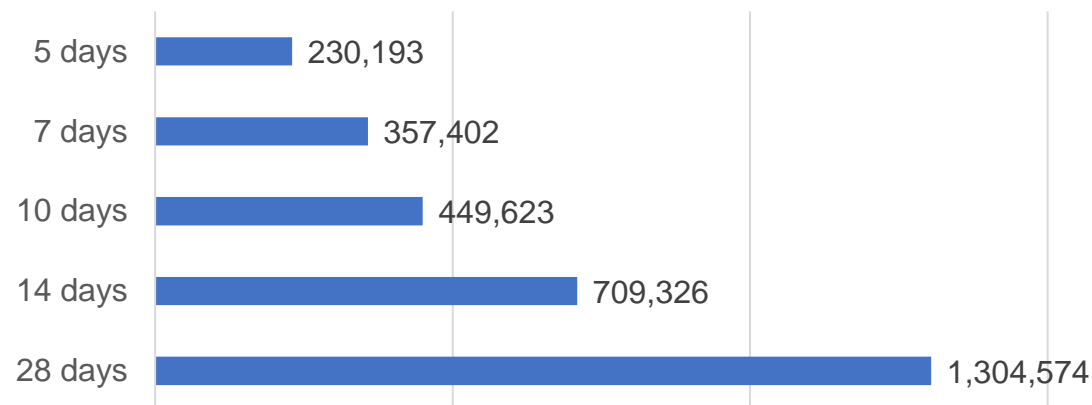
Data as at:  
22 May 2022

Australia's COVID-19  
Vaccine Roadmap

## Doses Administered by Week

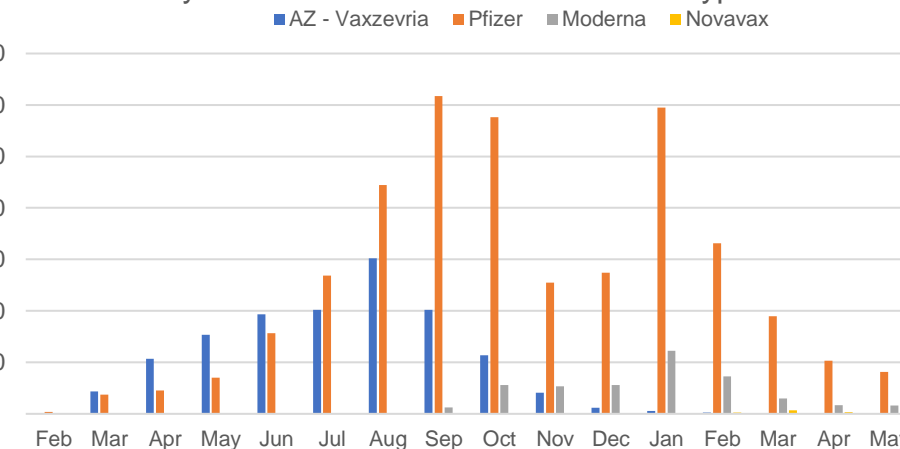


## Doses Reported

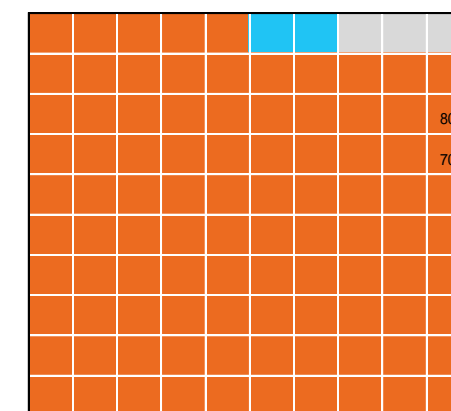


\*Sourced from the Australian Immunisation Register.

## Doses by administration month and vaccine type



## Eligible population percentage coverage



1st dose: > 95.0% 2nd dose: > 95.0%

\*Each square represents 1% of the national population. Squares are filled as milestones are achieved.

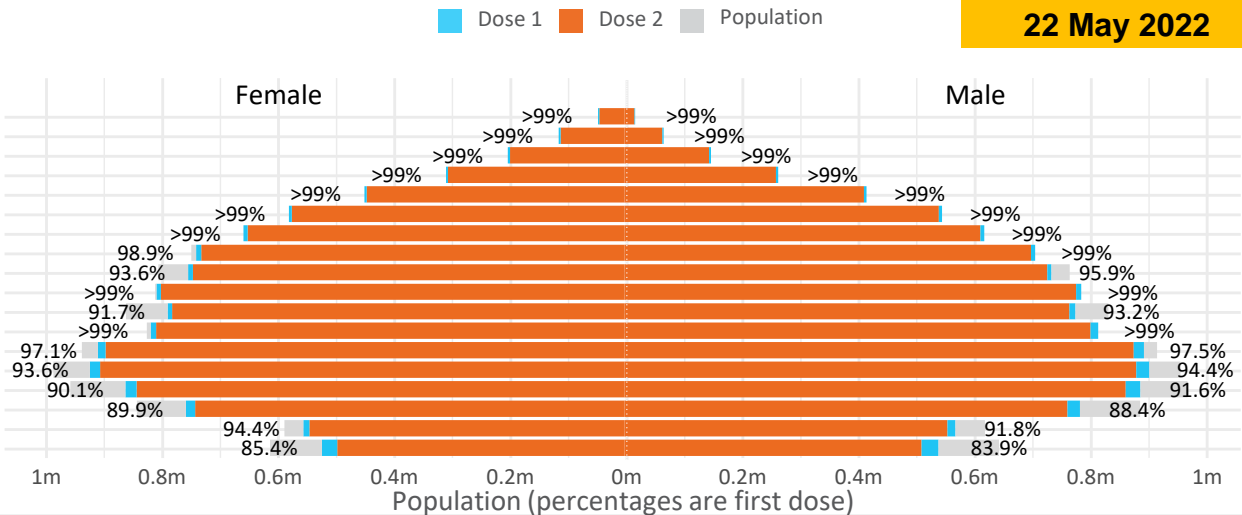
# Doses by age and sex

First and second doses by age and sex

	16+	50+	12-15	5-11
Dose 1	97.26% (20,054,894 doses / 20,619,959 people)	>99% (8,886,801 doses / 8,749,703 people)	84.66% (1,053,196 doses / 1,243,990 people)	52.72% (1,200,184 doses / 2,276,638 people)
Dose 2	95.64% (19,721,751 doses / 20,619,959 people)	>99% (8,780,232 doses / 8,749,703 people)	80.23% (998,035 doses / 1,243,990 people)	38.37% (873,476 doses / 2,276,638 people)

Data as at:  
22 May 2022

Age	Dose 1	Dose 2
95+	63,463 (>99%)	60,054 (>99%)
90-94	179,209 (>99%)	173,637 (>99%)
85-89	347,029 (>99%)	340,125 (>99%)
80-84	567,382 (>99%)	560,136 (>99%)
75-79	857,680 (>99%)	849,308 (>99%)
70-74	1,116,326 (>99%)	1,105,228 (>99%)
65-69	1,266,428 (>99%)	1,252,051 (>99%)
60-64	1,433,614 (>99%)	1,417,443 (98.7%)
55-59	1,475,674 (94.9%)	1,459,163 (93.8%)
50-54	1,579,996 (>99%)	1,563,087 (>99%)
45-49	1,551,303 (92.5%)	1,532,832 (91.4%)
40-44	1,620,247 (>99%)	1,596,303 (98.5%)
35-39	1,790,425 (97.6%)	1,758,485 (95.8%)
30-34	1,816,428 (94.4%)	1,774,873 (92.3%)
25-29	1,743,262 (91.4%)	1,695,881 (89.0%)
20-24	1,532,552 (89.5%)	1,493,133 (87.2%)
16-19	1,113,876 (93.2%)	1,090,012 (91.2%)
12-15	1,053,196 (84.7%)	998,035 (80.2%)

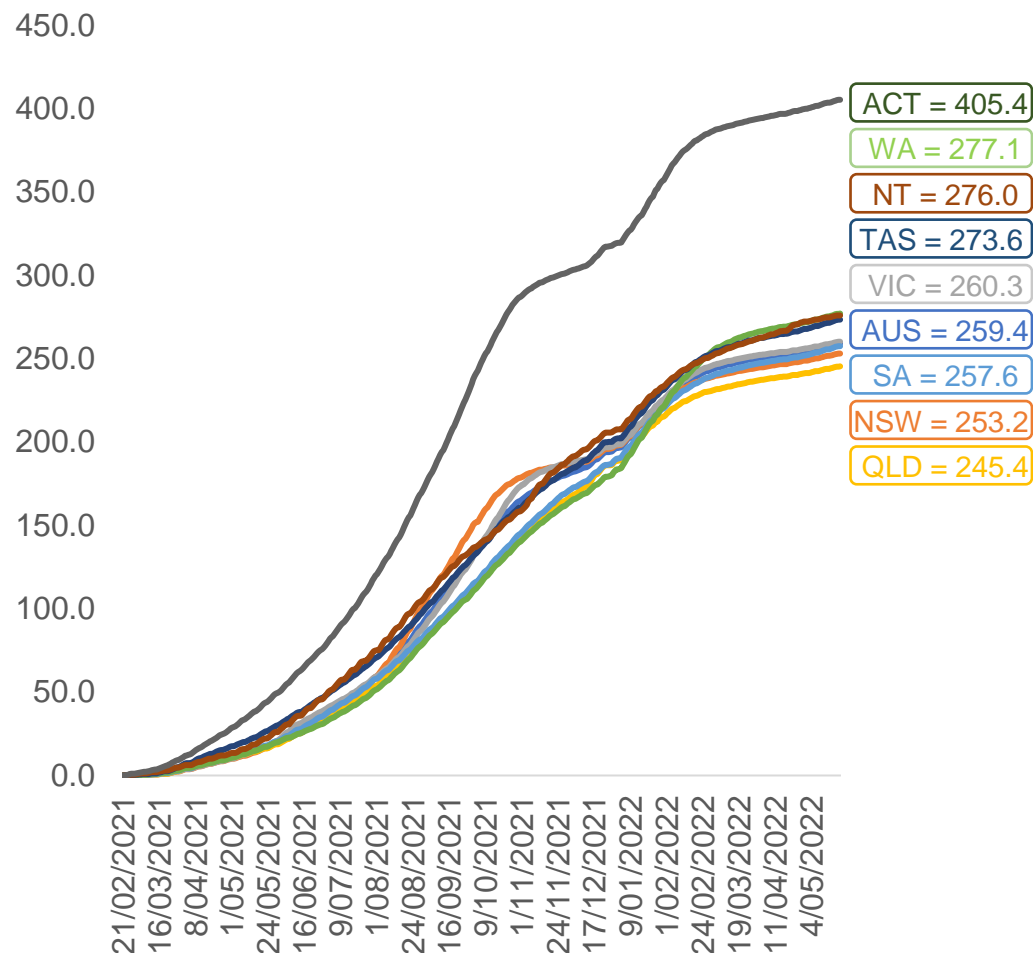


	AUS	ACT	NSW	NT	QLD	SA	TAS	VIC	WA
16 and over - dose 1	20,054,894	352,689	6,326,702	173,925	3,860,035	1,374,877	444,869	5,159,989	2,095,025
16 and over - dose 2	19,721,751	347,079	6,230,290	169,228	3,796,380	1,345,612	435,822	5,083,045	2,063,820
16 and over - population	20,619,959*	344,037	6,565,651	190,571	4,112,707	1,440,400	440,172	5,407,574	2,114,978
16 and over % with dose 1	97.26%	>99%	96.36%	91.27%	93.86%	95.45%	>99%	95.42%	>99%
16 and over % with dose 2	95.64%	>99%	94.89%	88.80%	92.31%	93.42%	>99%	94.00%	97.58%
5 to 11 - dose 1	1,200,184	31,914	358,123	13,239	208,347	84,123	28,635	326,480	141,481
5 to 11 - dose 2	873,476	26,820	265,285	8,363	146,249	61,438	22,785	238,987	99,018
5 to 11 - population	2,276,638	39,789	716,460	24,750	478,731	148,816	45,033	578,499	244,154
5 to 11 % with dose 1	52.72%	80.21%	49.99%	53.49%	43.52%	56.53%	63.59%	56.44%	57.95%
5 to 11 % with dose 2	38.37%	67.41%	37.03%	33.79%	30.55%	41.28%	50.60%	41.31%	40.56%
12 to 15 - dose 1	1,053,196	20,092	323,905	10,817	206,452	68,364	22,923	275,182	115,837
12 to 15 - dose 2	998,035	19,557	309,643	9,741	193,287	64,716	21,821	263,480	107,388
12 to 15 - population	1,243,990	19,693	390,330	13,060	270,146	82,747	26,308	308,611	132,869
12 to 15 % with dose 1	84.66%	>99%	82.98%	82.83%	76.42%	82.62%	87.13%	89.17%	87.18%
12 to 15 % with dose 2	80.23%	>99%	79.33%	74.59%	71.55%	78.21%	82.94%	85.38%	80.82%

\*National population will not equal sum of listed jurisdictions due to a small number of people counted in national population residing in some 'other' territories. Sum of state doses will not add to national total as some records are unable to be geocoded to a State or Territory.  
Doses sourced from Australian Immunisation Register, population from ABS ERP June 2020

# Vaccinations by location

Cumulative total doses administered vs eligible state populations\*

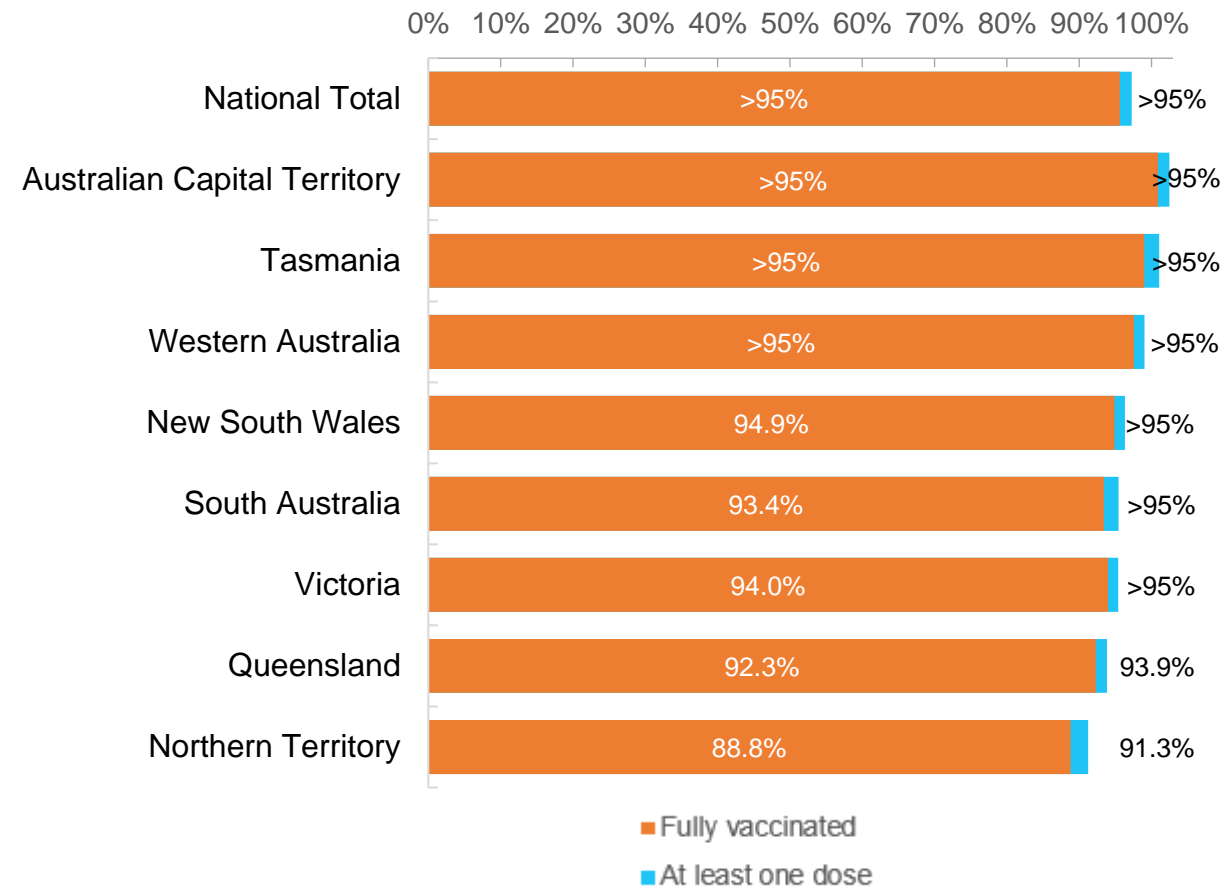


\*Not an indication of percentage vaccinated, numbers will exceed 100 due to multiple doses required per person of the population. All doses are included for those aged 12 and above, and are based on vaccination provider location.

Data as at:  
22 May 2022

Australia's COVID-19  
Vaccine Roadmap

First and Second Doses by residential location



# Aboriginal and Torres Strait Islander peoples

## Number of people vaccinated

Data as at:  
17 May 2022  
Updated weekly

Australia's COVID-19  
Vaccine Roadmap



**441,580**

people over the age of 16  
have had at least one dose

**84.9%**

of people over the age of 16  
have had at least one dose



**422,736**

people over the age of 16  
are fully vaccinated

**81.2%**

of people over the age of 16 are  
fully vaccinated



People aged 12 – 15 years

**48,427**

**42,621**

**68.4%**

At least one dose

**60.2%**

Fully vaccinated

### 178 Aboriginal community controlled health services (ACCHS)

0#

50

27

44

12

3

21

21

**ACT**

**NSW**

**NT**

**QLD**

**SA**

**TAS**

**VIC**

**WA**

Medicare Address State <sup>##</sup>	Individuals Dose 1	Individuals Dose 1 %	Individuals Dose 2	Individuals Dose 2 %
Australian Capital Territory	4,799	91.3%	4,679	89.1%
New South Wales	135,796	87.3%	132,716	85.3%
Northern Territory	41,509	89.6%	39,430	85.1%
Queensland	116,047	81.7%	110,581	77.9%
South Australia	19,990	80.4%	18,582	74.7%
Tasmania	13,916	88.8%	13,509	86.2%
Victoria	35,635	90.4%	34,857	88.4%
Western Australia	53,672	86.6%	49,818	80.4%
Unknown/Other Territories	20,216	69.3%	18,564	63.6%
<b>Totals</b>	<b>441,580</b>	<b>84.9%</b>	<b>422,736</b>	<b>81.2%</b>

Source: Australian Immunisation Register

\*Identifying as Aboriginal and Torres Strait Islander is optional and the estimated population may be under reported.

\*\*Includes all Aboriginal and Torres Strait Islander peoples who have received a vaccination, not limited to those administered in an ACCHS setting

#ACCHS in the ACT are currently operating as a Commonwealth Vaccine Clinics so not included to avoid double counting

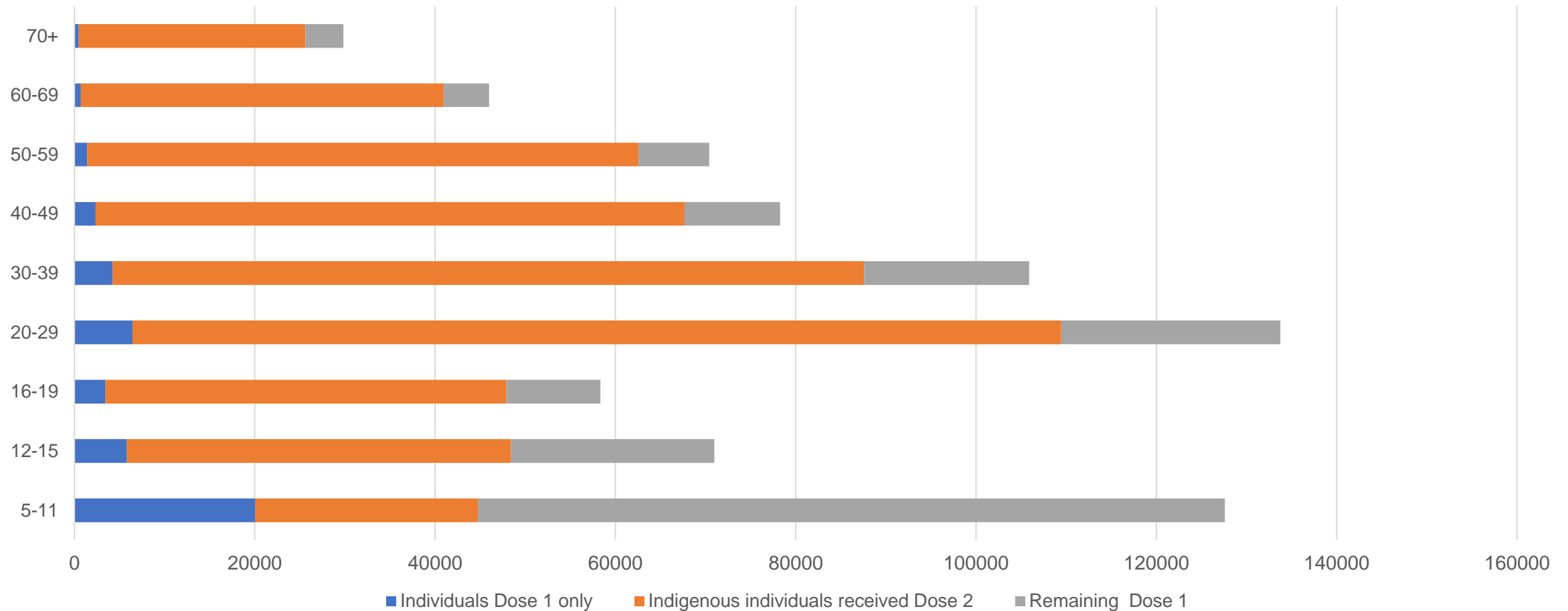
##The above table includes all identified Aboriginal and Torres Strait Islander people who are aged 16 and above by their state of residence.

# Aboriginal and Torres Strait Islander peoples

## Number of people vaccinated by age

Data as at:  
17 May 2022  
Updated weekly

Australia's COVID-19  
Vaccine Roadmap



Source: Australian Immunisation Register

# Commonwealth primary care

Data as at:  
22 May 2022

Australia's COVID-19  
Vaccine Roadmap



## Primary care vaccine administration sites

<b>5,724</b>	<b>128</b>	<b>178</b>	<b>3,597</b>
GPs	CVCs	ACCHS	Pharmacies



**36,343,472** total vaccine doses administered  
primary care settings as at 22 May  
**+ 6,277** recorded in the last 24 hours

## Primary care vaccinations by provider type

	Doses administered	Daily increase	7 day increase
General Practice* includes other Commonwealth	29,160,231	4,776	224,447
Pharmacy	7,183,241	1,501	86,502

**NSW**  
**12,548,825**  
(+1,939 daily increase)

**VIC**  
**9,027,680**  
(+1,851 daily increase)

**QLD**  
**6,987,760**  
(+1,102 daily increase)

**WA**  
**3,823,777**  
(+951 daily increase)

**TAS**  
**684,260**  
(+71 daily increase)

**SA**  
**2,167,385**  
(+284 daily increase)

**ACT**  
**574,194**  
(+46 daily increase)

**NT**  
**216,573**  
(**<10** daily increase)

**313,018**

doses administered to persons  
residing in other territories or with  
missing residential information

\*General practice includes Commonwealth Vaccination Clinics, Aboriginal Community Health Centres, Royal Flying Doctor Service and other Commonwealth vaccination facilities

Source: Australian Immunisation Register

Data as at:  
22 May 2022

# Commonwealth aged care and disability doses administered



**1,290,826** (+ 156 last 24 hours)

Total vaccine doses administered in aged care and disability facilities as at 22 May

Number of doses administered as part of the Commonwealth aged and disability care rollout

**NSW**  
**563,786**  
(**<10** daily increase)

**VIC**  
**241,541**  
(**+120** daily increase)

**QLD**  
**205,358**  
(**+29** daily increase)

**WA**  
**109,532**  
(**<10** daily increase)

**TAS**  
**23,448**  
(**<10** daily increase)

**SA**  
**84,606**  
(**<10** daily increase)

**ACT**  
**17,424**  
(**<10** daily increase)

**NT**  
**7,656**  
(**<10** daily increase)

**37,475**

doses administered to persons  
residing in other territories or with  
missing residential information

\*Sourced from the Australian Immunisation Register. Includes all persons vaccinated at participating residential aged care, disability and related industry settings.

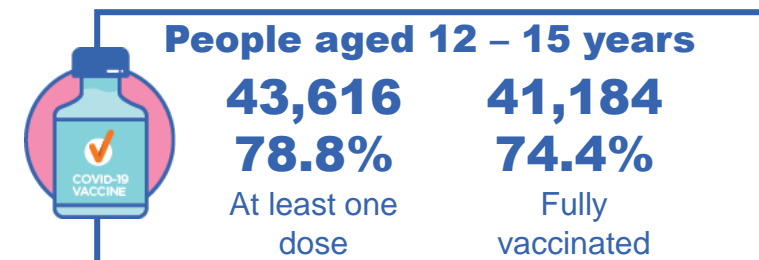
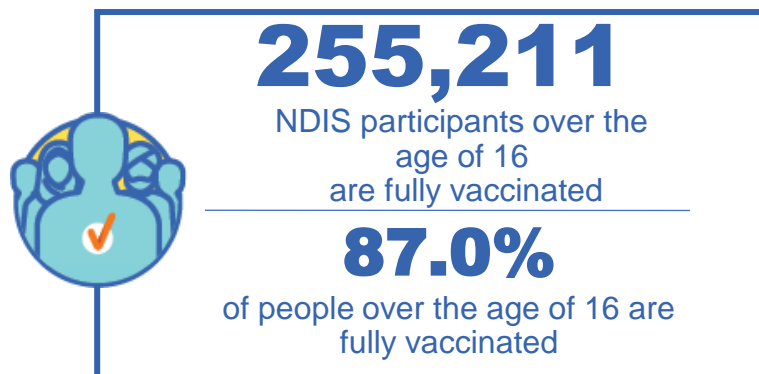
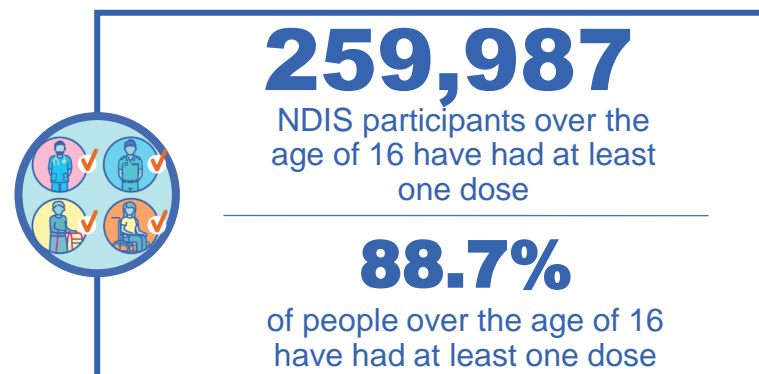
\*\*State level breakdown indicates the residential location and may not align to the state in which the vaccination occurred.

Source: Australian Immunisation Register

# National Disability Insurance Scheme (NDIS) reported vaccinations

Data as at:  
19 May 2022  
Updated weekly

Australia's COVID-19  
Vaccine Roadmap



## NDIS participant vaccinations

	People aged 16+ with at least one dose	People aged 16+ fully vaccinated	% People aged 16+ with at least one dose	% People aged 16+ fully vaccinated
ACT	4,911	4,844	90.6%	89.3%
NSW	79,723	78,424	88.9%	87.4%
NT	2,247	2,181	78.8%	76.4%
QLD	51,361	50,389	87.3%	85.7%
SA	21,240	20,729	86.6%	84.5%
TAS	6,514	6,362	88.6%	86.5%
VIC	69,150	67,972	89.8%	88.3%
WA	24,841	24,310	90.2%	88.3%
National	259,987	255,211	88.7%	87.0%

Source: Linkage between National Disability Insurance Agency data and the Australian Immunisation Register. Total NDIS participant numbers as at 28 February. Australian Immunisation Register data as at 18 May. Includes all participants regardless of residence type.

# National Disability Insurance Scheme (NDIS) reported vaccinations

Data as at:  
19 May 2022  
Updated weekly

Australia's COVID-19  
Vaccine Roadmap

NATIONAL	Total people with at least one dose	People fully vaccinated	Total number of individuals in cohort	% People with at least one dose	% People fully vaccinated
NDIS participants living in disability accommodation	20,771	20,430	23,352	88.9%	87.5%

## NDIS participants in disability and aged care accommodation



Source: Linkage between National Disability Insurance Agency data and the Australian Immunisation Register. Includes participants residing in disability accommodation only.

Source: Total NDIS participant numbers as at 28 February. Participant data as at 18 May. Australian Immunisation Register data as at 18 May. Worker data as at 19 May.

## NDIS workforce vaccinations

	NDIS workers with at least one dose	NDIS workers fully vaccinated	% NDIS workers with at least one dose	% NDIS workers fully vaccinated
NSW	125,387	120,302	98.2%	94.2%
VIC	117,076	113,562	98.3%	95.4%
QLD	70,482	69,519	97.7%	96.3%
WA	34,570	32,995	98.9%	94.4%
SA	35,846	33,534	98.6%	92.2%
TAS	10,904	10,672	99.1%	97.0%
ACT	11,990	11,964	98.9%	98.7%
NT	3,745	3,598	99.6%	95.7%
<b>TOTAL</b>	<b>410,000</b>	<b>396,146</b>	<b>98.3%</b>	<b>95.0%</b>

Source: the NDIS Commission has established a requirement for registered NDIS providers who provide intensive disability support services to report on the vaccination status of workers they employ, or otherwise engage, to deliver NDIS-funded supports and services, and who are required to be vaccinated in accordance with in-force state and territory public health orders. The statistics reflect data reported to the NDIS Commission by registered NDIS providers and should be considered indicative and subject to change

Note: Some registered NDIS providers are yet to report on the vaccination status of their workforce. The NDIS Commission is working with those providers around reporting requirements.

Remaining workers not included include those exempt from vaccination requirements, workers whose vaccination status is not yet verified by the provider (such as workers on leave) and provider reporting anomalies.

# Residential aged care vaccination rollout

Residential aged care facilities status

**176,555**

People fully vaccinated

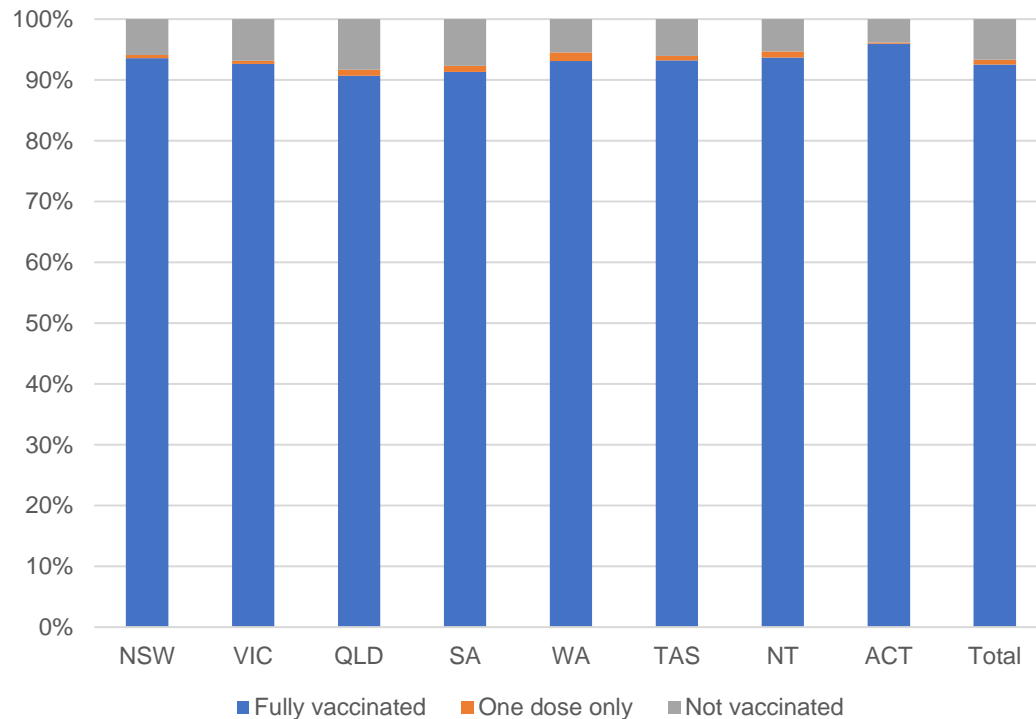
**178,019**

People with at least one dose

Australia's COVID-19 Vaccine Roadmap

Data as at:  
19 May 2022  
Updated weekly

## Aged care resident vaccinations



## Aged care worker vaccinations

Jurisdictions	Total workers with at least one dose	Workers fully vaccinated	% Workers with at least one dose	% Workers fully vaccinated
NSW	78,112	78,103	99.8%	99.8%
VIC	68,509	68,508	98.7%	98.7%
QLD	47,668	47,663	99.2%	99.2%
SA	26,998	26,982	98.6%	98.5%
WA	24,494	24,492	100.0%	100.0%
TAS	7,499	7,499	100.0%	100.0%
NT	886	886	100.0%	100.0%
ACT	2,943	2,943	100.0%	100.0%
Total	257,109	257,076	99.3%	99.3%

Source: My Aged Care Portal vaccination progress

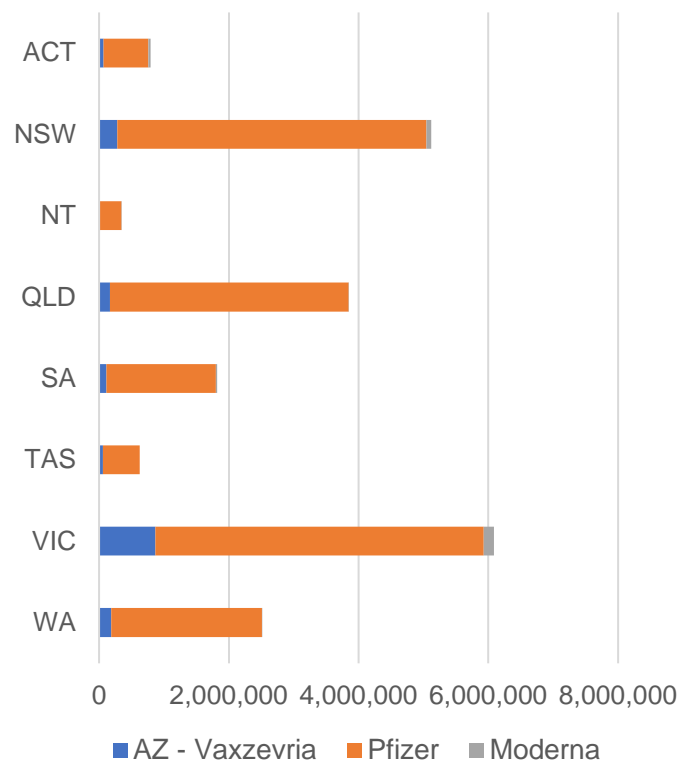
\*Status updates are provided by facilities at least once per week. Reporting is updated Monday to Friday to encompass different facility updates being made on different days.

Data is sourced directly from Aged Care Service Providers and is not drawn or closely aligned with data from AIR due to inconsistencies and potential lags in uploading of records.

Data as at:  
22 May 2022

## Jurisdiction administered

Total vaccine doses administered in State and Territory clinics as at 22 May



**21,150,325** total vaccine doses administered  
in State and Territory clinics as at 22 May  
+ **1,985** recorded in the last 24 hours  
+ **39,906** recorded in the last 7 days

**NSW**  
**5,119,969**  
(+402 daily increase)

**VIC**  
**6,091,459**  
(+495 daily increase)

**QLD**  
**3,848,006**  
(+58 daily increase)

**WA**  
**2,511,447**  
(+339 daily increase)

**TAS**  
**623,395**  
(+116 daily increase)

**SA**  
**1,821,585**  
(+336 daily increase)

**ACT**  
**790,576**  
(+228 daily increase)

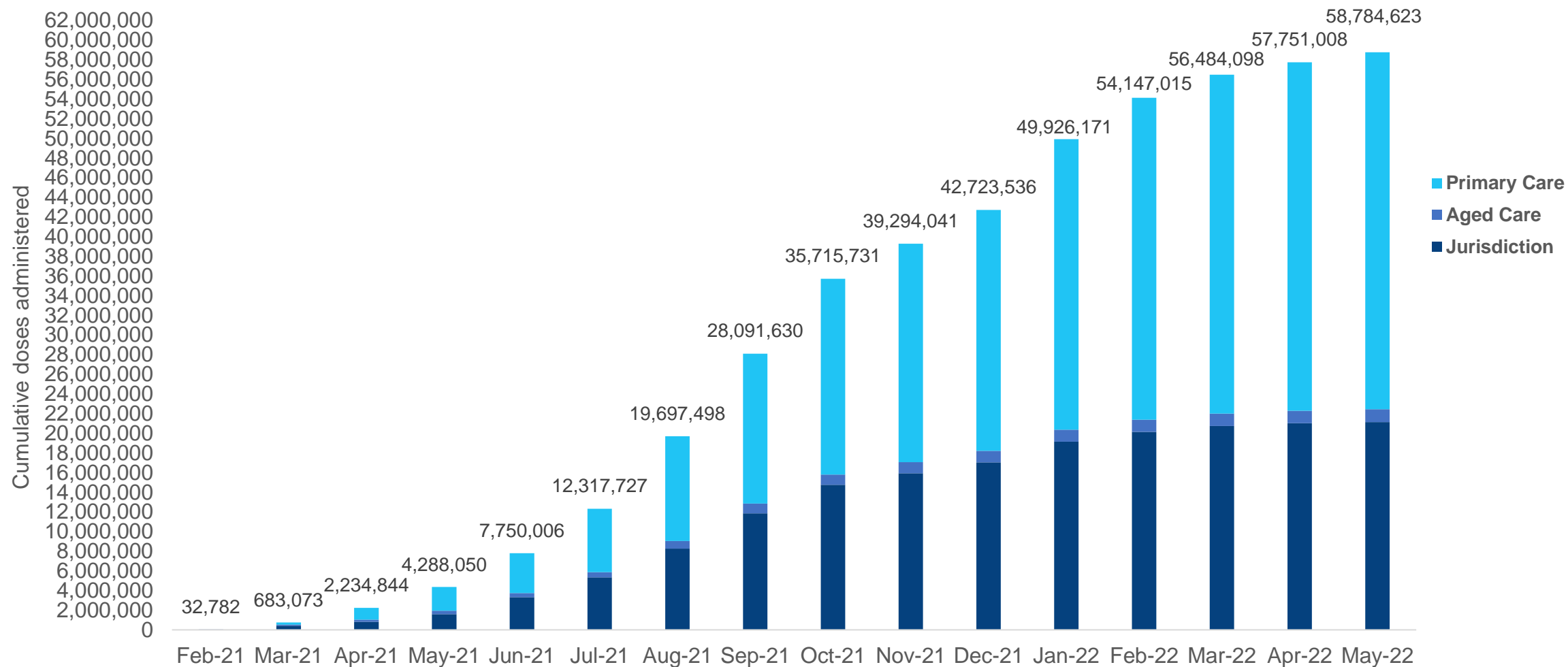
**NT**  
**343,888**  
(+11 daily increase)

\*Sourced from the Australian Immunisation Register. Numbers are calculated as difference in daily cumulative reported numbers to allow for historical corrections.

Source: Australian Immunisation Register

# Cumulative doses administered by channel

Data as at:  
22 May 2022



Source: Australian Immunisation Register

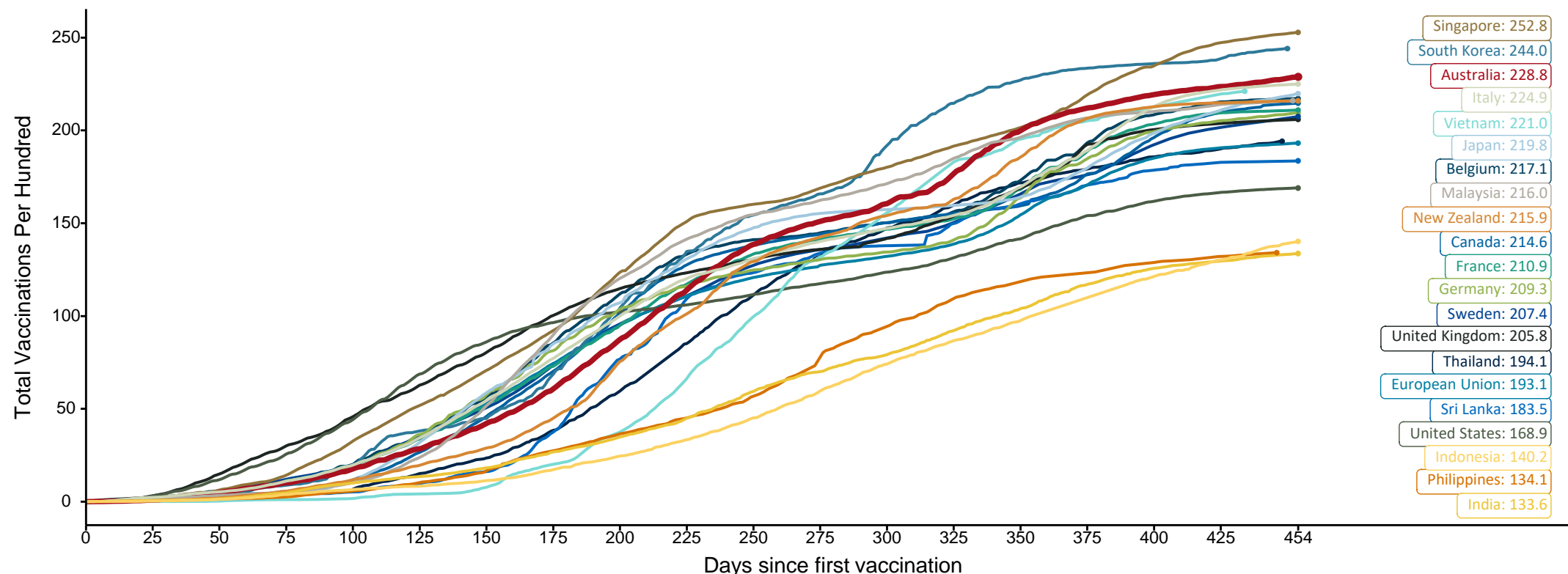
# Doses at equivalent stages of rollout (Day 454)

Data as at:  
22 May 2022  
Updated weekly

Australia's COVID-19  
Vaccine Roadmap

The x-axis is truncated at the length of Australia's vaccination program. Countries with intermittent reporting have had their doses per 100 imputed to Australia's current stage of rollout. Israel excluded as it is beyond scale of the graph

Cumulative doses administered (22 May): **58,784,623**



Note: From 11 January 2022, data for Australia includes all doses administered to people 5 and over. Prior to 11 January, data was for 12 and over.

Source: Department of Health (Australia), Our World in Data (international)

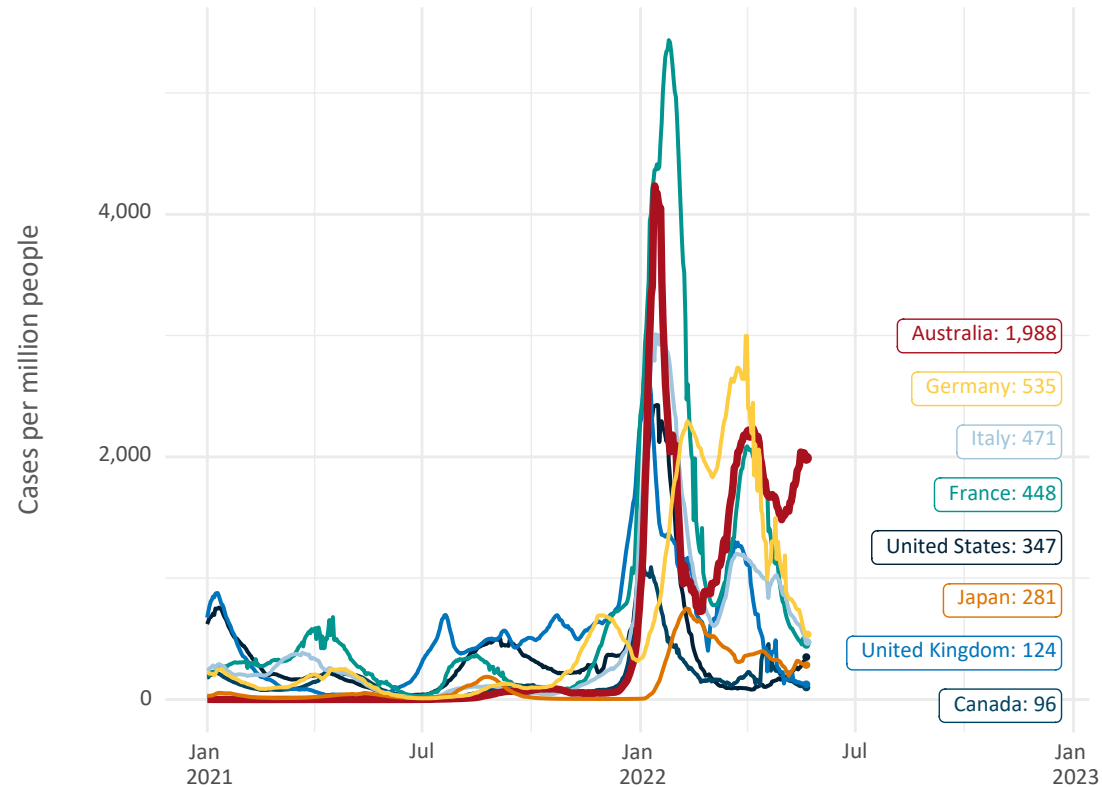
Latest data: 22 May

# International data – COVID-19

Data as at:  
22 May 2022  
Updated weekly

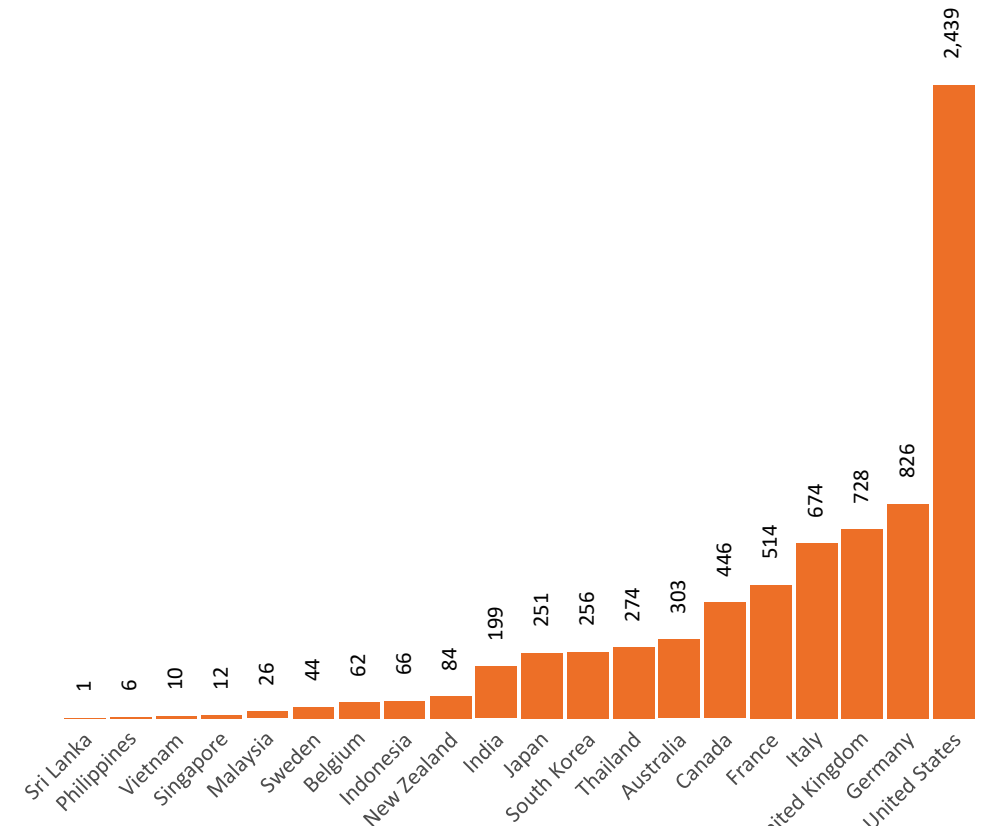
Australia's COVID-19  
Vaccine Roadmap

New daily cases per million since 2021, Australia and G7 countries  
Smoothed - 7 day average



Source: OWID  
Data downloaded: 23 May 2022 10:09  
Latest data: 22 May 2022

COVID-19 deaths in past 7 days - Australia and select countries



Source: OWID  
Data downloaded: 23 May 2022 10:09  
Latest data: 22 May 2022

# Pandemic Response Payments

Australia's COVID-19  
Vaccine Roadmap

Data as at midnight:  
22 May 2022 (updated weekly)



**2.38 million**

People have received at least one  
COVID Disaster Payment  
(including ISP200)

**8.12 million**

Claims granted across  
three different payments

**\$14.54 billion**

Paid Out as at 22 May 2022



Claims Received Digitally

**93%**

Three payments available:

**COVID Disaster Payment**

assisting during a lockdown event  
in a Commonwealth hotspot.

**Income Support Payment \$200**

for income support recipients who  
lost at least 8 hours of work.

**Pandemic Leave Disaster**

for those who have to self-isolate,  
quarantine or care.

For more information visit:

[www.servicesaustralia.gov.au](http://www.servicesaustralia.gov.au)



**COVID Disaster Payment:** 5.89 million claims received - 2.19 million individuals paid a total of \$12.59 billion.

**\$200 Income Support Payment:** 353,000 claims received - 183,000 individuals paid a total of \$268.92 million.

**Pandemic Leave Disaster Payment:** 2.40 million claims received - 1.43 million individuals paid a total of \$1.67 billion.

## COVID-19 DISASTER PAYMENTS



# Administration and Utilisation

## Doses as at 22 May 2022

	Ordered	Available	Administered	Stock on Hand at Sites	Estimated Dose Utilisation %
	Up to 22/05/22	Delivered up to 15/05/22 including redistributions	Up to 22/05/22		(see note)
NSW	6,112,272	6,112,072	5,101,946	398,919	93%
VIC	6,999,554	6,997,554	6,087,878	272,606	97%
QLD	4,847,202	4,805,542	3,815,003	510,121	89%
WA	2,672,598	2,666,798	2,538,430	56,754	Fully utilised
SA	2,151,520	2,122,220	1,821,585	101,848	96%
TAS	656,290	656,290	623,395	1,694	Fully utilised
NT	418,834	408,846	370,541	17,888	Fully utilised
ACT	651,486	651,386	791,547	7,286	Fully utilised
Jurisdiction delivered total	24,509,756	24,420,708	21,150,325	1,367,115	97%
Commonwealth Vaccination Providers	1,406,798	1,400,812	1,290,826	7,503	Fully utilised
Commonwealth Primary Care & Other	56,236,960	55,668,670	36,343,472	13,805,172	75%
Total	82,153,514	81,490,190	58,784,623	15,179,790	82%

### About this data

- Ordered – Total doses delivered to sites. Based on logistics provider data. This figure includes doses allocated for administration in the coming week.
- Available – total doses that could have been administered to date, less doses re-distributed from States & Territories to Primary Care or Commonwealth Vaccination Providers (i.e., does not include those deliveries recently received, and intended for use in the coming week).
- Administered – Doses administered as at 22 May 2022.
- Stock on Hand at Sites – Available doses minus Administered doses and a small % wastage.
- The dose utilisation is calculated based on the total doses administered and a small % wastage in line with international standards in relation to total available doses.
- For Commonwealth Vaccination Providers, the doses available for administration is for the full period (up to 22 May 2022).
- Commonwealth Vaccination Providers utilisation is not provided as the in-reach rollout is demand-based.