



Australian Government
Operation COVID Shield

COVID-19 Vaccine Roll-out

22 May 2022

Data as at:
21 May 2022

Total vaccine doses



58,776,205 total vaccine
doses administered nationally as at 21 May
+19,841 recorded in the last 24 hours



20,053,853

people have had at least one
dose

>95%

of people over the age of 16
have had at least one dose



19,720,784

people are fully vaccinated

>95%

of people over the age of 16 are
fully vaccinated



13,629,098

people over the age of 16
who have received three or
more doses

NSW
18,229,057
(+6,106 daily
increase)

VIC
15,440,782
(+5,318 daily
increase)

QLD
11,115,533
(+2,357 daily
increase)

WA
6,470,666
(+2,753 daily
increase)

TAS
1,328,903
(+883 daily
increase)

SA
4,068,951
(+1,621 daily
increase)

ACT
1,537,365
(+660 daily
increase)

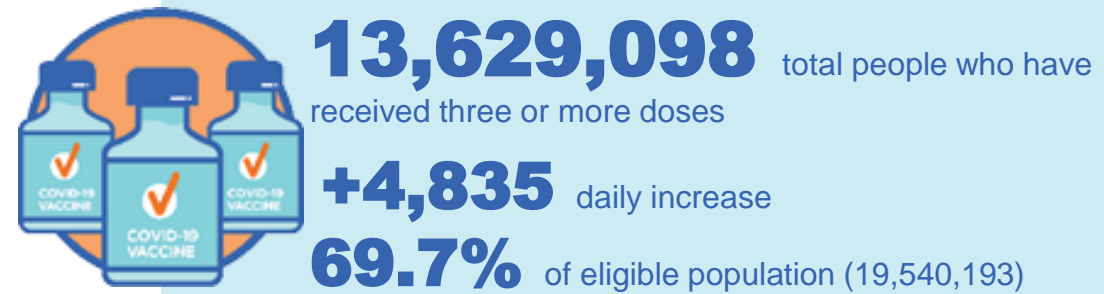
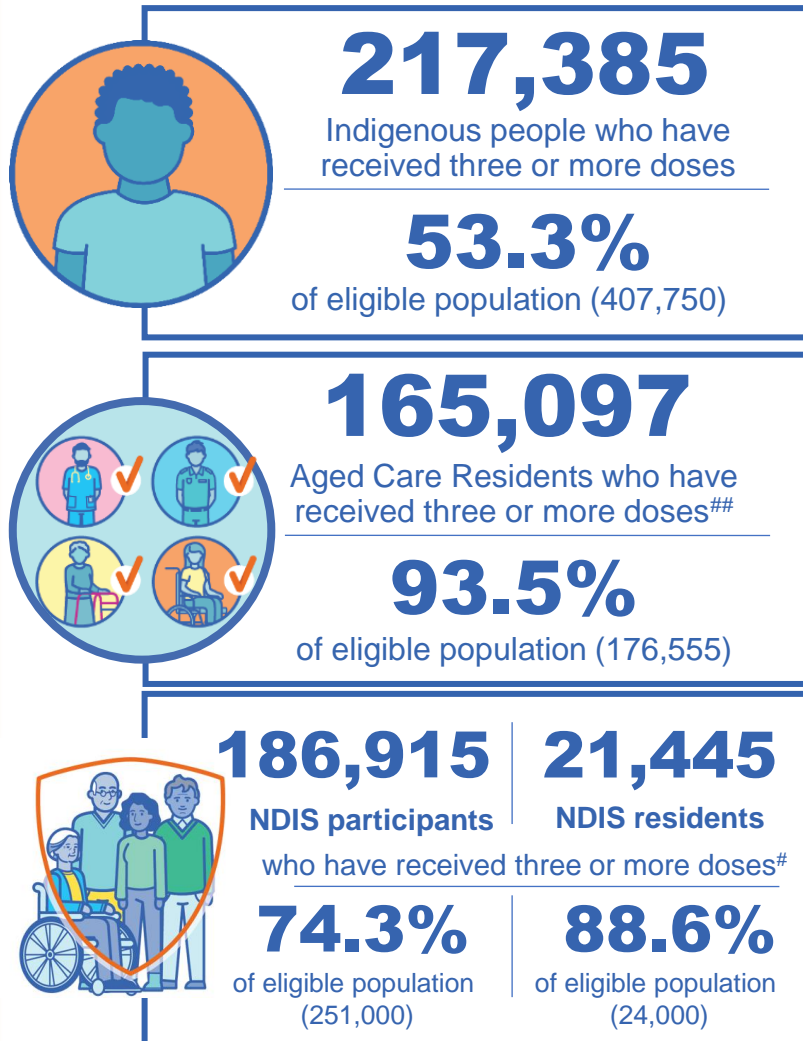
NT
584,948
(+143 daily
increase)

*Administration state breakdown indicates state in which a vaccine was administered

**Overall dose count includes instances of more than three doses per person in a small number of cases.

Source: Australian Immunisation Register

Booster Vaccinations



Data as at:
21 May 2022

	Number of People	Daily Increase	% of Eligible
NSW	4,158,609	1,154	67.0%
VIC	3,641,208	1,156	72.0%
QLD	2,358,804	499	62.9%
WA	1,675,759	615	83.3%
SA	968,397	472	73.0%
TAS	311,460	57	72.3%
ACT	269,994	131	78.1%
NT	128,459	42	77.0%

*People may belong to multiple groups and could be represented in the above breakdowns multiple times.
NDIS participants data as at 18 May 2022. ## Aged Care Residents data as at 20 May 2022.

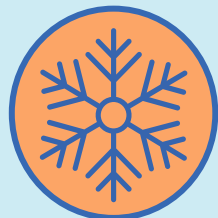
Source: Australian Immunisation Register

116,408 doses administered to persons residing in other territories or with missing residential information

Winter / Fourth Doses

Data as at:
15 May 2022
Updated weekly

Australia's COVID-19
Vaccine Roadmap



958,757 total people (16+) who have received four or more doses

+251,933 weekly increase

	Number of People 16+	Weekly Increase
ACT	22,334	4,740
NSW	316,549	79,396
NT	4,663	954
QLD	182,124	48,015
SA	75,433	21,857
TAS	26,891	7,334
VIC	239,316	61,581
WA	87,023	26,996

4,424 doses administered to persons
residing in other territories or with
missing residential information

Source: Australian Immunisation Register

Vaccinations by residential location

Australia's COVID-19 Vaccine Roadmap

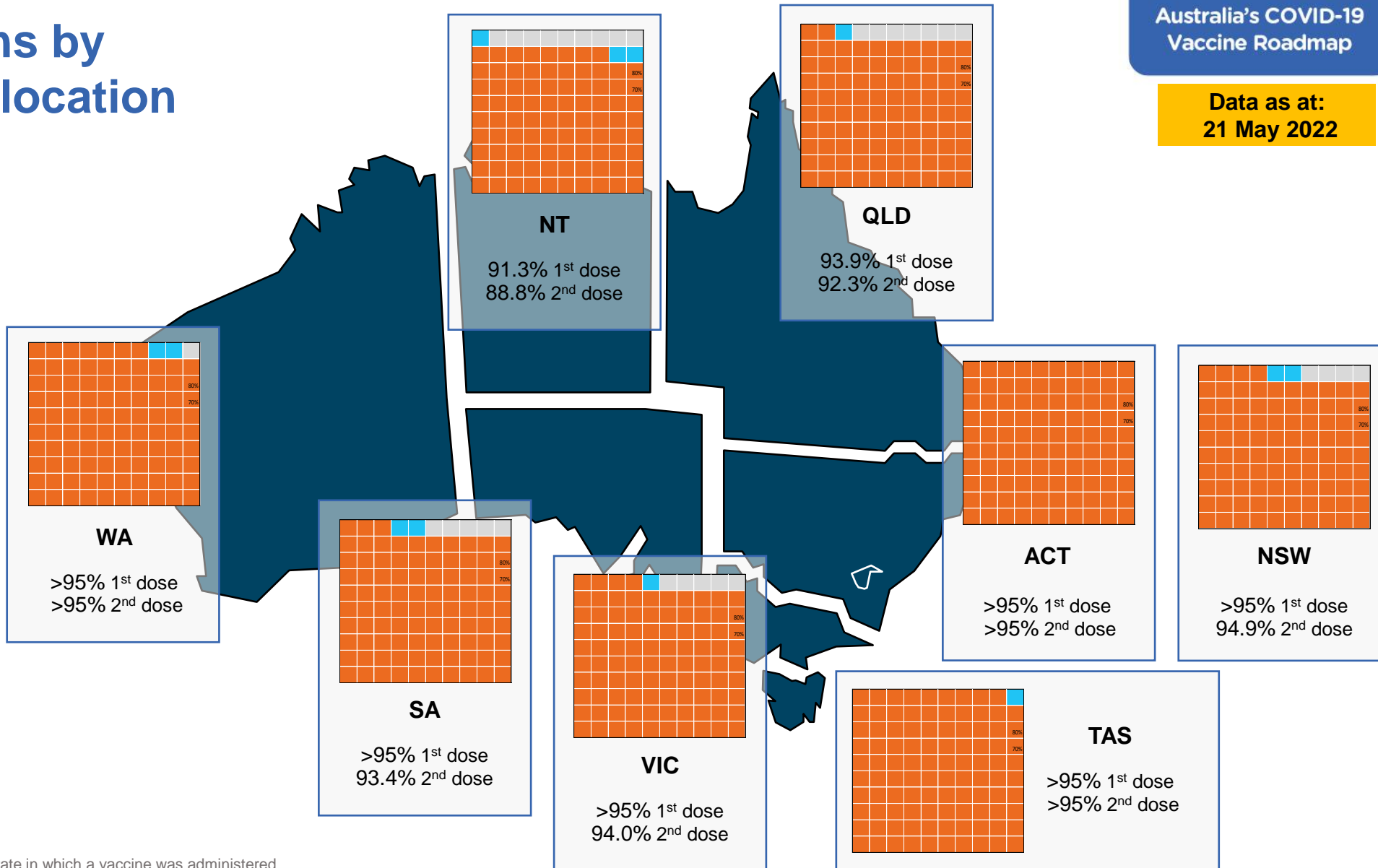
Data as at:
21 May 2022

First doses

Age	Today	4 weeks ago	8 weeks ago
16+	>95%	>95%	>95%
50+	>95%	>95%	>95%
70+	>95%	>95%	>95%

Fully vaccinated

Age	Today	4 weeks ago	8 weeks ago
16+	>95%	>95%	>95%
50+	>95%	>95%	>95%
70+	>95%	>95%	>95%



*Residential state may differ from the state in which a vaccine was administered

Commonwealth and Jurisdiction vaccine doses administered

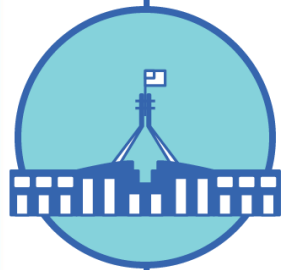
Data as at:
21 May 2022



58,776,205 total vaccine
doses administered nationally as at 21 May
+ 19,841 recorded in the last 24 hours



21,148,340
doses administered by state
and territory facilities
+ 4,396
recorded in the last 24 hours



37,627,865
doses administered by
commonwealth facilities
+ 15,445
recorded in the last 24 hours

36,337,195 total vaccine doses
administered in primary care settings
1,290,670 total vaccine doses
administered in aged care and disability
settings

NSW	Jurisdictions	Commonwealth
Cumulative	5,119,567	13,109,490
Daily increase	953	5,153

VIC	Jurisdictions	Commonwealth
Cumulative	6,090,964	9,349,818
Daily increase	1,327	3,991

QLD	Jurisdictions	Commonwealth
Cumulative	3,847,948	7,267,585
Daily increase	342	2,015

WA	Jurisdictions	Commonwealth
Cumulative	2,511,108	3,959,558
Daily increase	613	2,140

TAS	Jurisdictions	Commonwealth
Cumulative	623,279	705,624
Daily increase	97	786

SA	Jurisdictions	Commonwealth
Cumulative	1,821,249	2,247,702
Daily increase	644	977

ACT	Jurisdictions	Commonwealth
Cumulative	790,348	747,017
Daily increase	347	313

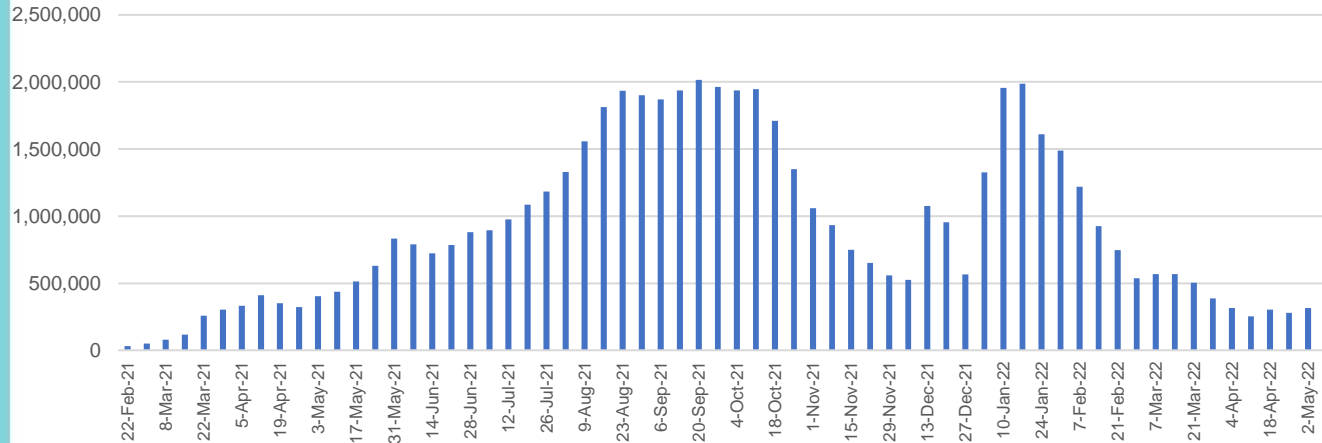
NT	Jurisdictions	Commonwealth
Cumulative	343,877	241,071
Daily increase	73	70

Vaccine milestone charts

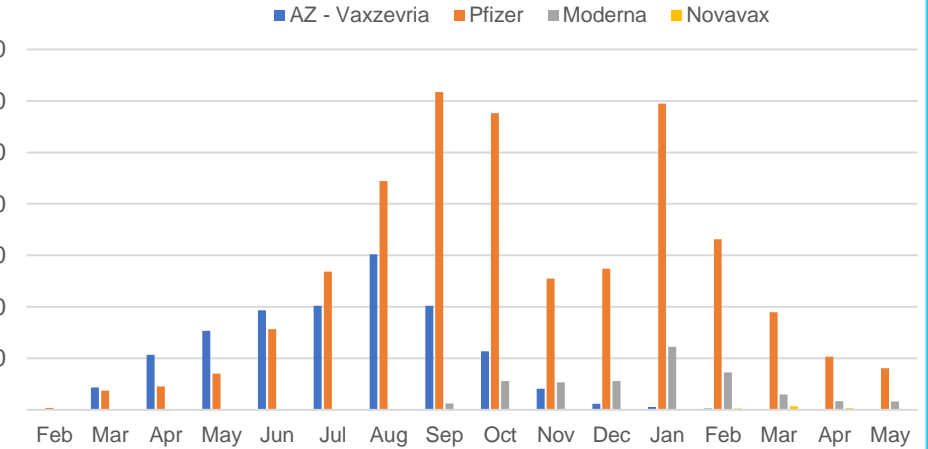
Data as at:
21 May 2022

Australia's COVID-19
Vaccine Roadmap

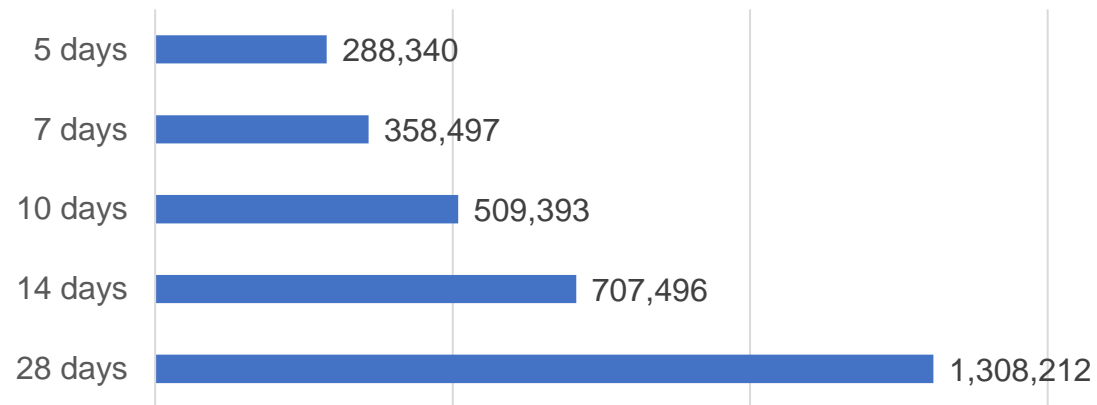
Doses Administered by Week



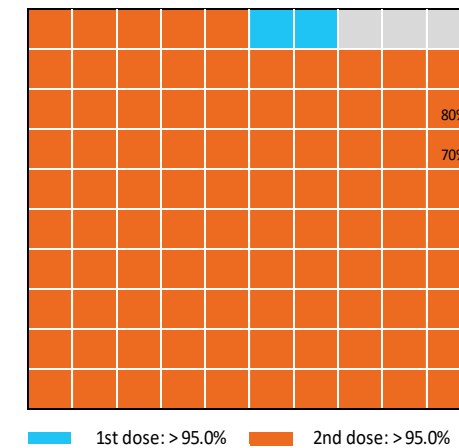
Doses by administration month and vaccine type



Doses Reported



Eligible population percentage coverage



*Each square represents 1% of the national population.
Squares are filled as milestones are achieved.

*Sourced from the Australian Immunisation Register.

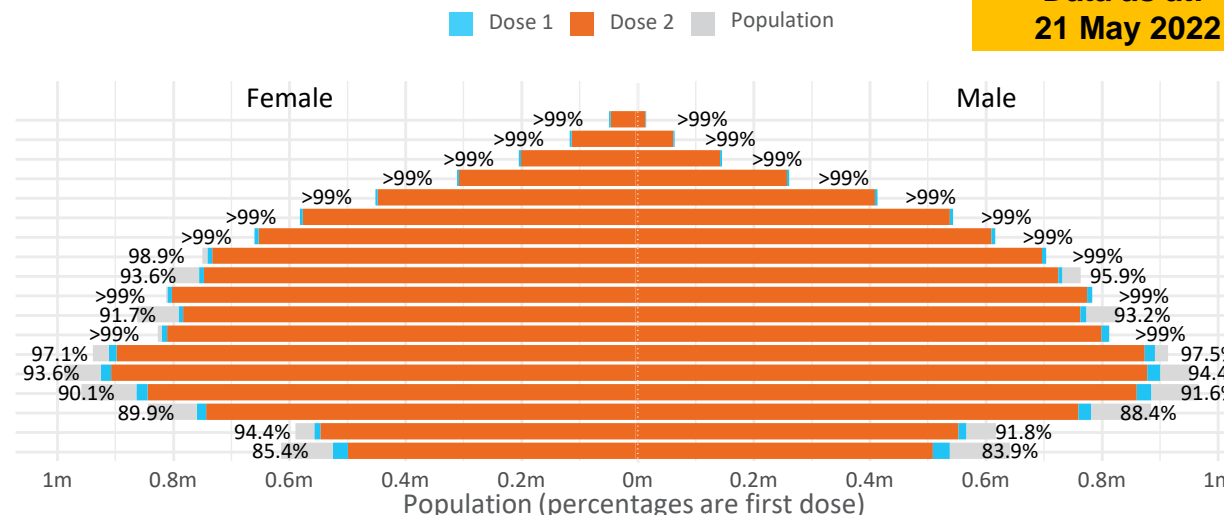
Doses by age and sex

First and second doses by age and sex

	16+	50+	12-15	5-11
Dose 1	97.25% (20,053,853 doses / 20,619,959 people)	>99% (8,885,767 doses / 8,749,703 people)	84.70% (1,053,605 doses / 1,243,990 people)	52.73% (1,200,389 doses / 2,276,638 people)
Dose 2	95.64% (19,720,784 doses / 20,619,959 people)	>99% (8,779,242 doses / 8,749,703 people)	80.27% (998,496 doses / 1,243,990 people)	38.35% (872,987 doses / 2,276,638 people)

Data as at:
21 May 2022

Age	Dose 1	Dose 2
95+	63,420 (>99%)	60,012 (>99%)
90-94	179,115 (>99%)	173,544 (>99%)
85-89	346,937 (>99%)	340,037 (>99%)
80-84	567,210 (>99%)	559,963 (>99%)
75-79	857,485 (>99%)	849,115 (>99%)
70-74	1,116,299 (>99%)	1,105,204 (>99%)
65-69	1,266,259 (>99%)	1,251,888 (>99%)
60-64	1,433,513 (>99%)	1,417,352 (98.7%)
55-59	1,475,715 (94.9%)	1,459,210 (93.8%)
50-54	1,579,814 (>99%)	1,562,917 (>99%)
45-49	1,551,357 (92.5%)	1,532,884 (91.4%)
40-44	1,620,376 (>99%)	1,596,438 (98.5%)
35-39	1,790,386 (97.6%)	1,758,448 (95.8%)
30-34	1,816,366 (94.4%)	1,774,813 (92.3%)
25-29	1,743,090 (91.4%)	1,695,728 (88.9%)
20-24	1,532,651 (89.5%)	1,493,230 (87.2%)
16-19	1,113,860 (93.1%)	1,090,001 (91.2%)
12-15	1,053,605 (84.7%)	998,496 (80.3%)

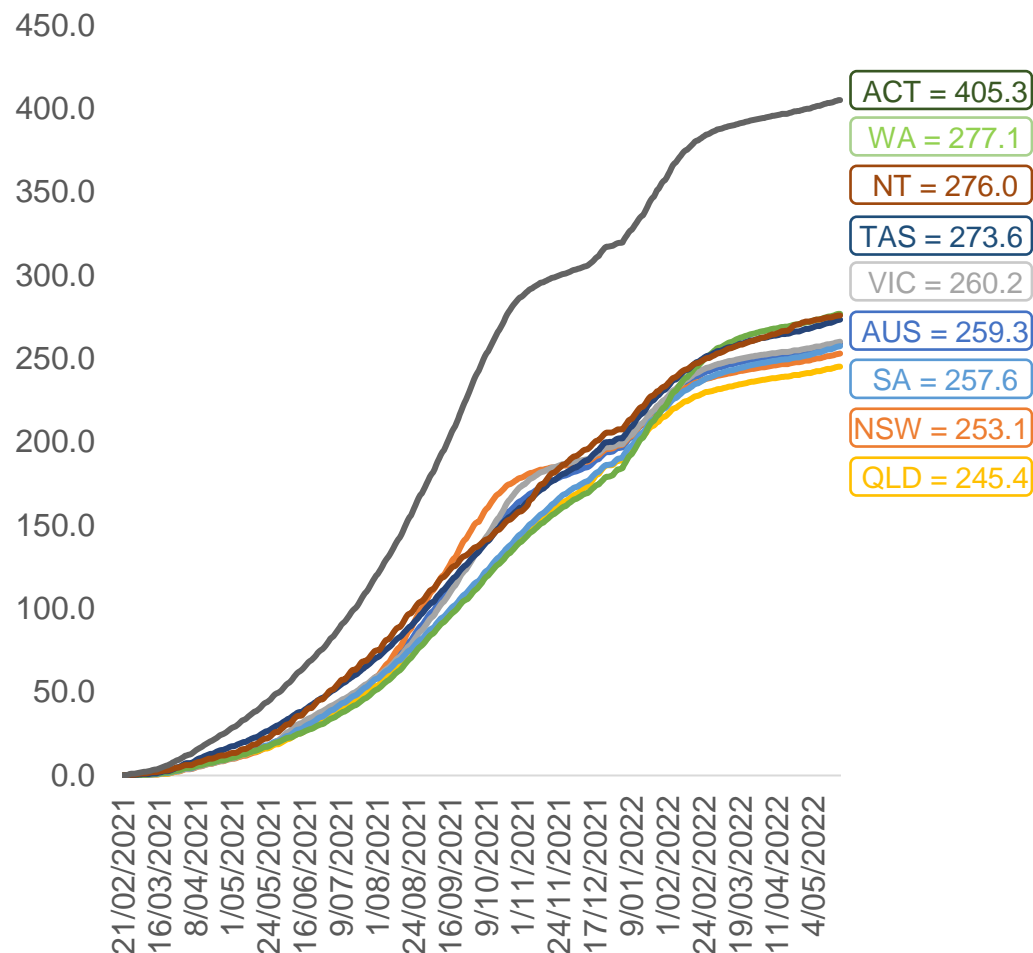


	AUS	ACT	NSW	NT	QLD	SA	TAS	VIC	WA
16 and over - dose 1	20,053,853	352,660	6,326,354	173,917	3,859,853	1,374,819	444,852	5,159,700	2,094,905
16 and over - dose 2	19,720,784	347,054	6,229,965	169,218	3,796,215	1,345,550	435,806	5,082,791	2,063,702
16 and over - population	20,619,959*	344,037	6,565,651	190,571	4,112,707	1,440,400	440,172	5,407,574	2,114,978
16 and over % with dose 1	97.25%	>99%	96.36%	91.26%	93.85%	95.45%	>99%	95.42%	>99%
16 and over % with dose 2	95.64%	>99%	94.89%	88.80%	92.30%	93.42%	>99%	93.99%	97.58%
5 to 11 - dose 1	1,200,389	31,912	358,190	13,242	208,390	84,132	28,638	326,535	141,498
5 to 11 - dose 2	872,987	26,783	265,137	8,364	146,179	61,411	22,777	238,878	98,922
5 to 11 - population	2,276,638	39,789	716,460	24,750	478,731	148,816	45,033	578,499	244,154
5 to 11 % with dose 1	52.73%	80.20%	49.99%	53.50%	43.53%	56.53%	63.59%	56.45%	57.95%
5 to 11 % with dose 2	38.35%	67.31%	37.01%	33.79%	30.53%	41.27%	50.58%	41.29%	40.52%
12 to 15 - dose 1	1,053,605	20,101	324,020	10,816	206,537	68,396	22,936	275,280	115,887
12 to 15 - dose 2	998,496	19,564	309,776	9,741	193,388	64,749	21,835	263,594	107,439
12 to 15 - population	1,243,990	19,693	390,330	13,060	270,146	82,747	26,308	308,611	132,869
12 to 15 % with dose 1	84.70%	>99%	83.01%	82.82%	76.45%	82.66%	87.18%	89.20%	87.22%
12 to 15 % with dose 2	80.27%	>99%	79.36%	74.59%	71.59%	78.25%	83.00%	85.41%	80.86%

*National population will not equal sum of listed jurisdictions due to a small number of people counted in national population residing in some 'other' territories. Sum of state doses will not add to national total as some records are unable to be geocoded to a State or Territory.
Doses sourced from Australian Immunisation Register, population from ABS ERP June 2020

Vaccinations by location

Cumulative total doses administered vs eligible state populations*

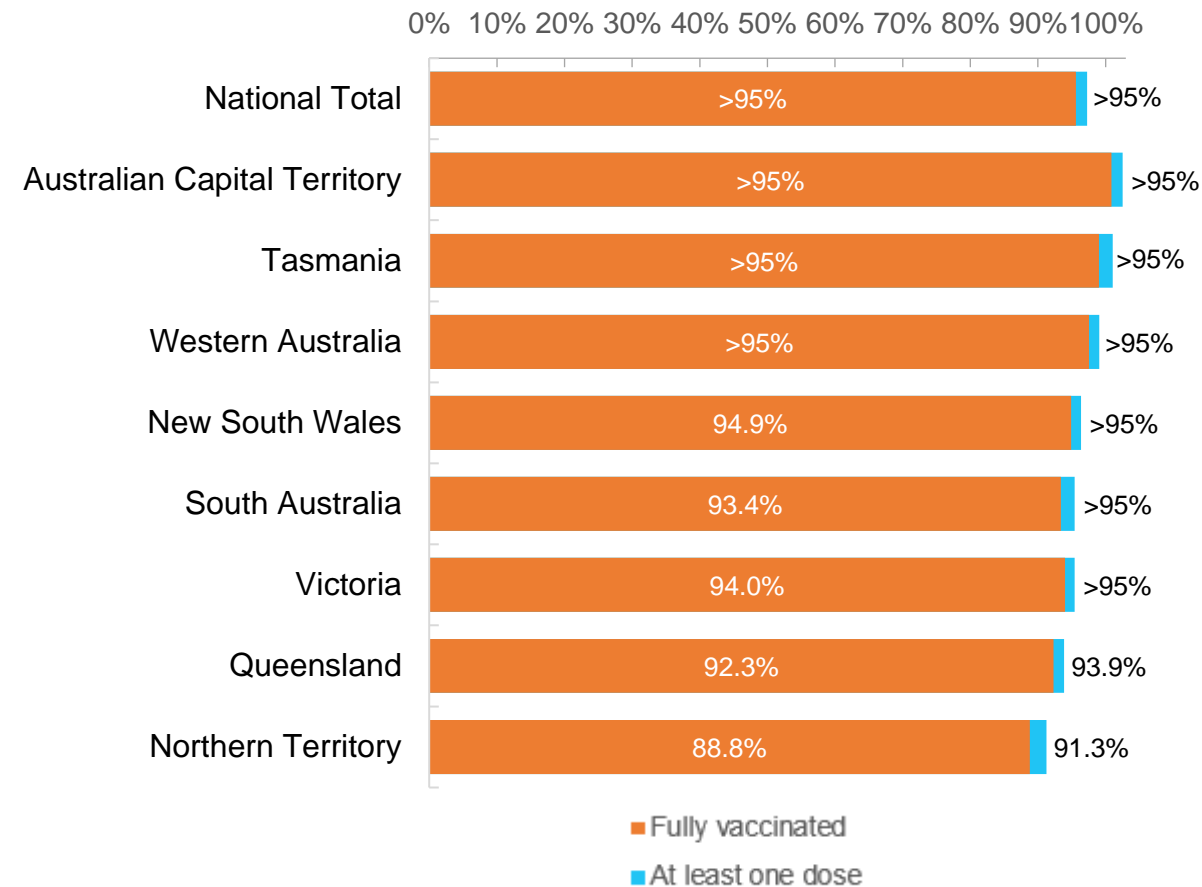


*Not an indication of percentage vaccinated, numbers will exceed 100 due to multiple doses required per person of the population. All doses are included for those aged 12 and above, and are based on vaccination provider location.

Data as at:
21 May 2022

Australia's COVID-19
Vaccine Roadmap

First and Second Doses by residential location



Aboriginal and Torres Strait Islander peoples

Number of people vaccinated

Data as at:
17 May 2022
Updated weekly

Australia's COVID-19
Vaccine Roadmap



441,580

people over the age of 16
have had at least one dose

84.9%

of people over the age of 16
have had at least one dose



422,736

people over the age of 16
are fully vaccinated

81.2%

of people over the age of 16 are
fully vaccinated



People aged 12 – 15 years

48,427

42,621

68.4%

At least one dose

60.2%

Fully vaccinated

178 Aboriginal community controlled health services (ACCHS)

0#

50

27

44

12

3

21

21

ACT

NSW

NT

QLD

SA

TAS

VIC

WA

Medicare Address State ^{##}	Individuals Dose 1	Individuals Dose 1 %	Individuals Dose 2	Individuals Dose 2 %
Australian Capital Territory	4,799	91.3%	4,679	89.1%
New South Wales	135,796	87.3%	132,716	85.3%
Northern Territory	41,509	89.6%	39,430	85.1%
Queensland	116,047	81.7%	110,581	77.9%
South Australia	19,990	80.4%	18,582	74.7%
Tasmania	13,916	88.8%	13,509	86.2%
Victoria	35,635	90.4%	34,857	88.4%
Western Australia	53,672	86.6%	49,818	80.4%
Unknown/Other Territories	20,216	69.3%	18,564	63.6%
Totals	441,580	84.9%	422,736	81.2%

Source: Australian Immunisation Register

*Identifying as Aboriginal and Torres Strait Islander is optional and the estimated population may be under reported.

**Includes all Aboriginal and Torres Strait Islander peoples who have received a vaccination, not limited to those administered in an ACCHS setting

#ACCHS in the ACT are currently operating as a Commonwealth Vaccine Clinics so not included to avoid double counting

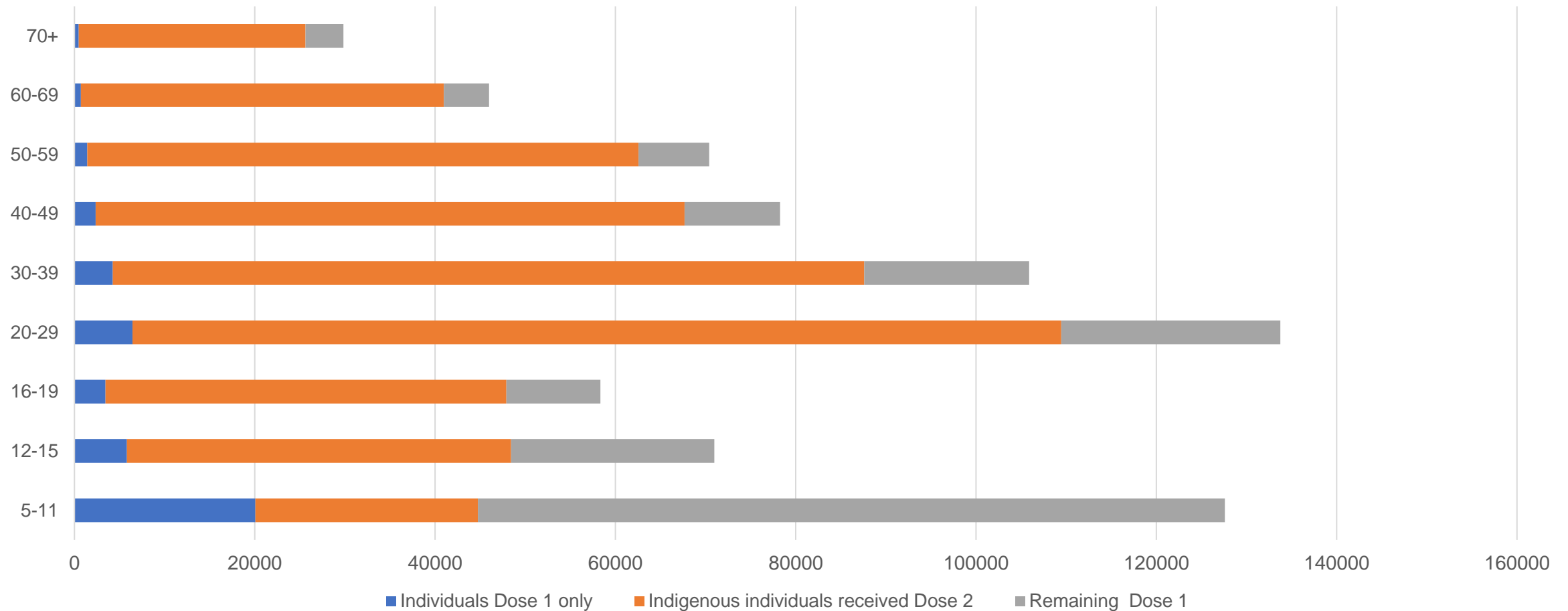
##The above table includes all identified Aboriginal and Torres Strait Islander people who are aged 16 and above by their state of residence.

Aboriginal and Torres Strait Islander peoples

Number of people vaccinated by age

Data as at:
17 May 2022
Updated weekly

Australia's COVID-19
Vaccine Roadmap



Source: Australian Immunisation Register

Commonwealth primary care

Data as at:
21 May 2022

Australia's COVID-19
Vaccine Roadmap



Primary care vaccine administration sites

5,724	128	178	3,597
GPs	CVCs	ACCHS	Pharmacies



36,337,195 total vaccine doses administered
primary care settings as at 21 May
+ 15,118 recorded in the last 24 hours

Primary care vaccinations by provider type

	Doses administered	Daily increase	7 day increase
General Practice* includes other Commonwealth	29,155,455	10,807	224,573
Pharmacy	7,181,740	4,311	86,844

NSW
12,546,886
(+4,301 daily increase)

VIC
9,025,829
(+3,413 daily increase)

QLD
6,986,658
(+1,356 daily increase)

WA
3,822,826
(+1,667 daily increase)

TAS
684,189
(+659 daily increase)

SA
2,167,101
(+693 daily increase)

ACT
574,148
(+257 daily increase)

NT
216,566
(<10 daily increase)

312,992

doses administered to persons
residing in other territories or with
missing residential information

*General practice includes Commonwealth Vaccination Clinics, Aboriginal Community Health Centres, Royal Flying Doctor Service and other Commonwealth vaccination facilities

Source: Australian Immunisation Register

Data as at:
21 May 2022

Commonwealth aged care and disability doses administered



1,290,670 (+ 327 last 24 hours)

Total vaccine doses administered in aged care and disability facilities as at 21 May

Number of doses administered as part of the Commonwealth aged and disability care rollout

NSW
563,785
(**<10** daily increase)

VIC
241,421
(**+164** daily increase)

QLD
205,329
(**+30** daily increase)

WA
109,530
(**<10** daily increase)

TAS
23,447
(**<10** daily increase)

SA
84,608
(**<10** daily increase)

ACT
17,426
(**<10** daily increase)

NT
7,656
(**<10** daily increase)

37,468

doses administered to persons
residing in other territories or with
missing residential information

*Sourced from the Australian Immunisation Register. Includes all persons vaccinated at participating residential aged care, disability and related industry settings.

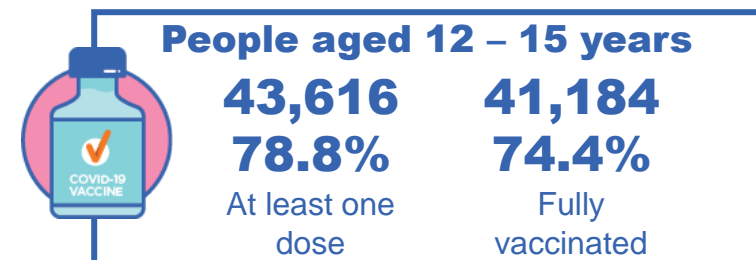
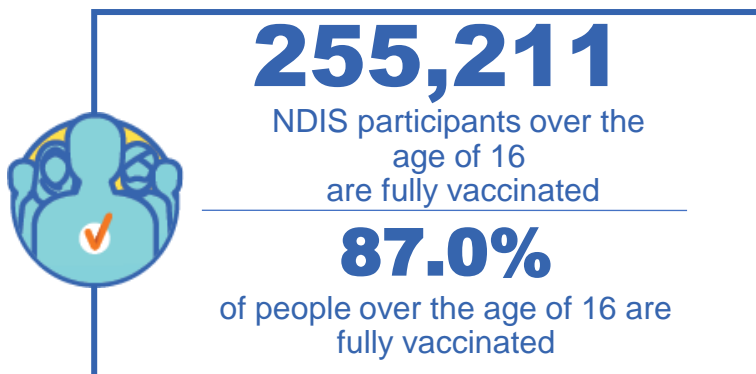
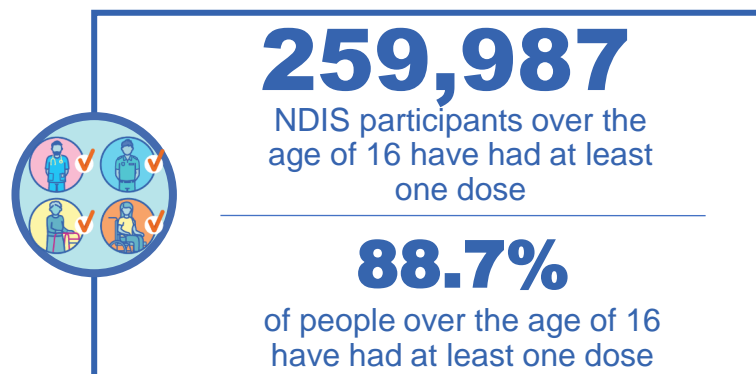
**State level breakdown indicates the residential location and may not align to the state in which the vaccination occurred.

Source: Australian Immunisation Register

National Disability Insurance Scheme (NDIS) reported vaccinations

Data as at:
19 May 2022
Updated weekly

Australia's COVID-19
Vaccine Roadmap



NDIS participant vaccinations

	People aged 16+ with at least one dose	People aged 16+ fully vaccinated	% People aged 16+ with at least one dose	% People aged 16+ fully vaccinated
ACT	4,911	4,844	90.6%	89.3%
NSW	79,723	78,424	88.9%	87.4%
NT	2,247	2,181	78.8%	76.4%
QLD	51,361	50,389	87.3%	85.7%
SA	21,240	20,729	86.6%	84.5%
TAS	6,514	6,362	88.6%	86.5%
VIC	69,150	67,972	89.8%	88.3%
WA	24,841	24,310	90.2%	88.3%
National	259,987	255,211	88.7%	87.0%

Source: Linkage between National Disability Insurance Agency data and the Australian Immunisation Register. Total NDIS participant numbers as at 28 February. Australian Immunisation Register data as at 18 May. Includes all participants regardless of residence type.

National Disability Insurance Scheme (NDIS) reported vaccinations

Data as at:
19 May 2022
Updated weekly

Australia's COVID-19
Vaccine Roadmap

NATIONAL	Total people with at least one dose	People fully vaccinated	Total number of individuals in cohort	% People with at least one dose	% People fully vaccinated
NDIS participants living in disability accommodation	20,771	20,430	23,352	88.9%	87.5%

NDIS participants in disability and aged care accommodation



Source: Linkage between National Disability Insurance Agency data and the Australian Immunisation Register. Includes participants residing in disability accommodation only.

Source: Total NDIS participant numbers as at 28 February. Participant data as at 18 May. Australian Immunisation Register data as at 18 May. Worker data as at 19 May.

NDIS workforce vaccinations

	NDIS workers with at least one dose	NDIS workers fully vaccinated	% NDIS workers with at least one dose	% NDIS workers fully vaccinated
NSW	125,387	120,302	98.2%	94.2%
VIC	117,076	113,562	98.3%	95.4%
QLD	70,482	69,519	97.7%	96.3%
WA	34,570	32,995	98.9%	94.4%
SA	35,846	33,534	98.6%	92.2%
TAS	10,904	10,672	99.1%	97.0%
ACT	11,990	11,964	98.9%	98.7%
NT	3,745	3,598	99.6%	95.7%
TOTAL	410,000	396,146	98.3%	95.0%

Source: the NDIS Commission has established a requirement for registered NDIS providers who provide intensive disability support services to report on the vaccination status of workers they employ, or otherwise engage, to deliver NDIS-funded supports and services, and who are required to be vaccinated in accordance with in-force state and territory public health orders. The statistics reflect data reported to the NDIS Commission by registered NDIS providers and should be considered indicative and subject to change

Note: Some registered NDIS providers are yet to report on the vaccination status of their workforce. The NDIS Commission is working with those providers around reporting requirements.

Remaining workers not included include those exempt from vaccination requirements, workers whose vaccination status is not yet verified by the provider (such as workers on leave) and provider reporting anomalies.

Residential aged care vaccination rollout

Residential aged care facilities status

176,555

People fully vaccinated

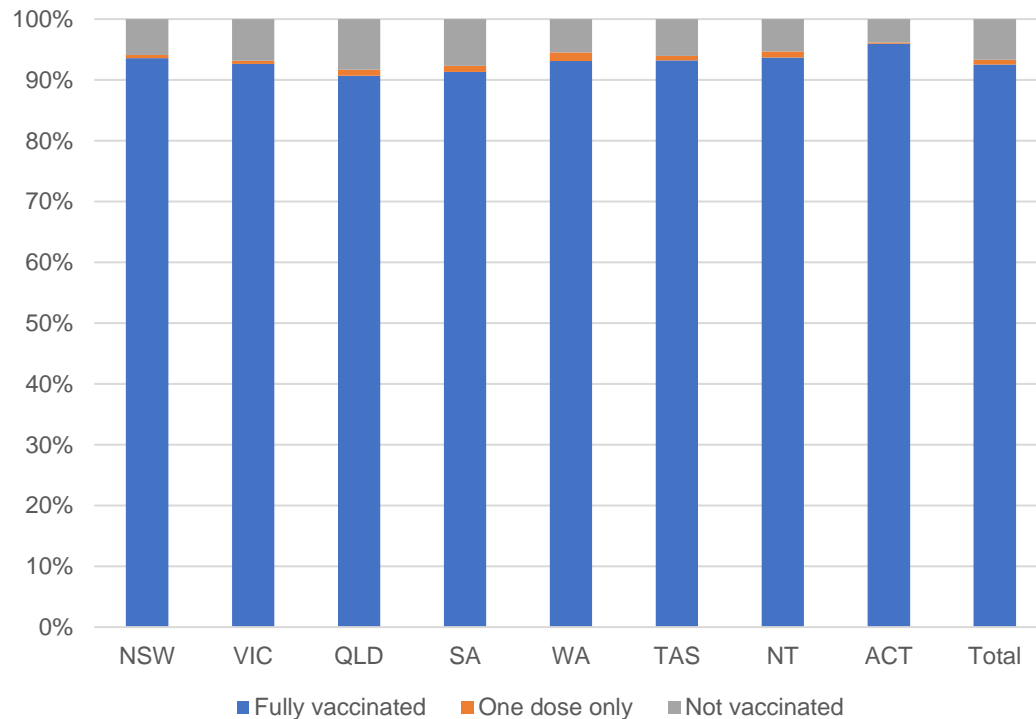
178,019

People with at least one dose

Australia's COVID-19 Vaccine Roadmap

Data as at:
19 May 2022
Updated weekly

Aged care resident vaccinations



Aged care worker vaccinations

Jurisdictions	Total workers with at least one dose	Workers fully vaccinated	% Workers with at least one dose	% Workers fully vaccinated
NSW	78,112	78,103	99.8%	99.8%
VIC	68,509	68,508	98.7%	98.7%
QLD	47,668	47,663	99.2%	99.2%
SA	26,998	26,982	98.6%	98.5%
WA	24,494	24,492	100.0%	100.0%
TAS	7,499	7,499	100.0%	100.0%
NT	886	886	100.0%	100.0%
ACT	2,943	2,943	100.0%	100.0%
Total	257,109	257,076	99.3%	99.3%

Source: My Aged Care Portal vaccination progress

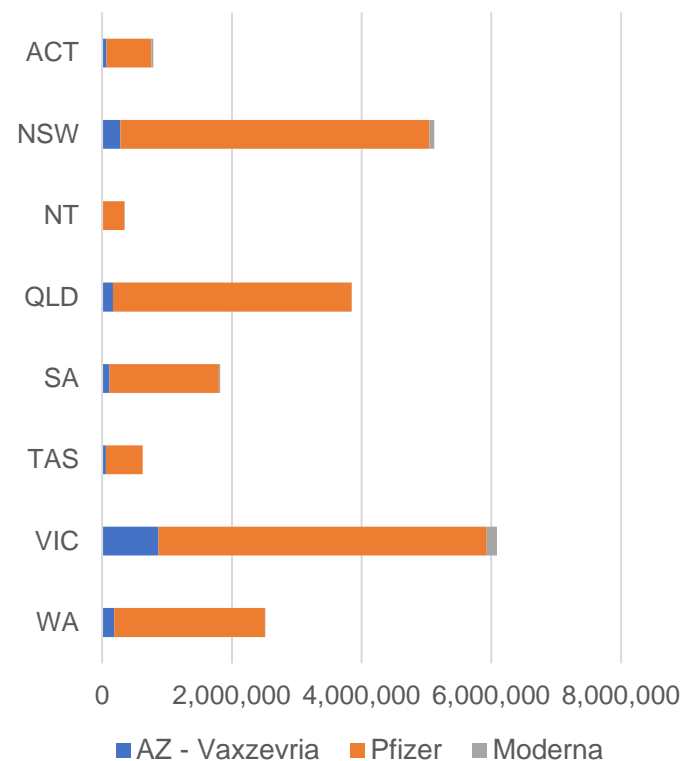
*Status updates are provided by facilities at least once per week. Reporting is updated Monday to Friday to encompass different facility updates being made on different days.

Data is sourced directly from Aged Care Service Providers and is not drawn or closely aligned with data from AIR due to inconsistencies and potential lags in uploading of records.

Data as at:
21 May 2022

Jurisdiction administered

Total vaccine doses administered in State and Territory clinics as at 21 May



21,148,340 total vaccine doses administered
in State and Territory clinics as at 21 May
+ **4,396** recorded in the last 24 hours
+ **40,549** recorded in the last 7 days

NSW
5,119,567
(+953 daily increase)

VIC
6,090,964
(+1,327 daily increase)

QLD
3,847,948
(+342 daily increase)

WA
2,511,108
(+613 daily increase)

TAS
623,279
(+97 daily increase)

SA
1,821,249
(+644 daily increase)

ACT
790,348
(+347 daily increase)

NT
343,877
(+73 daily increase)

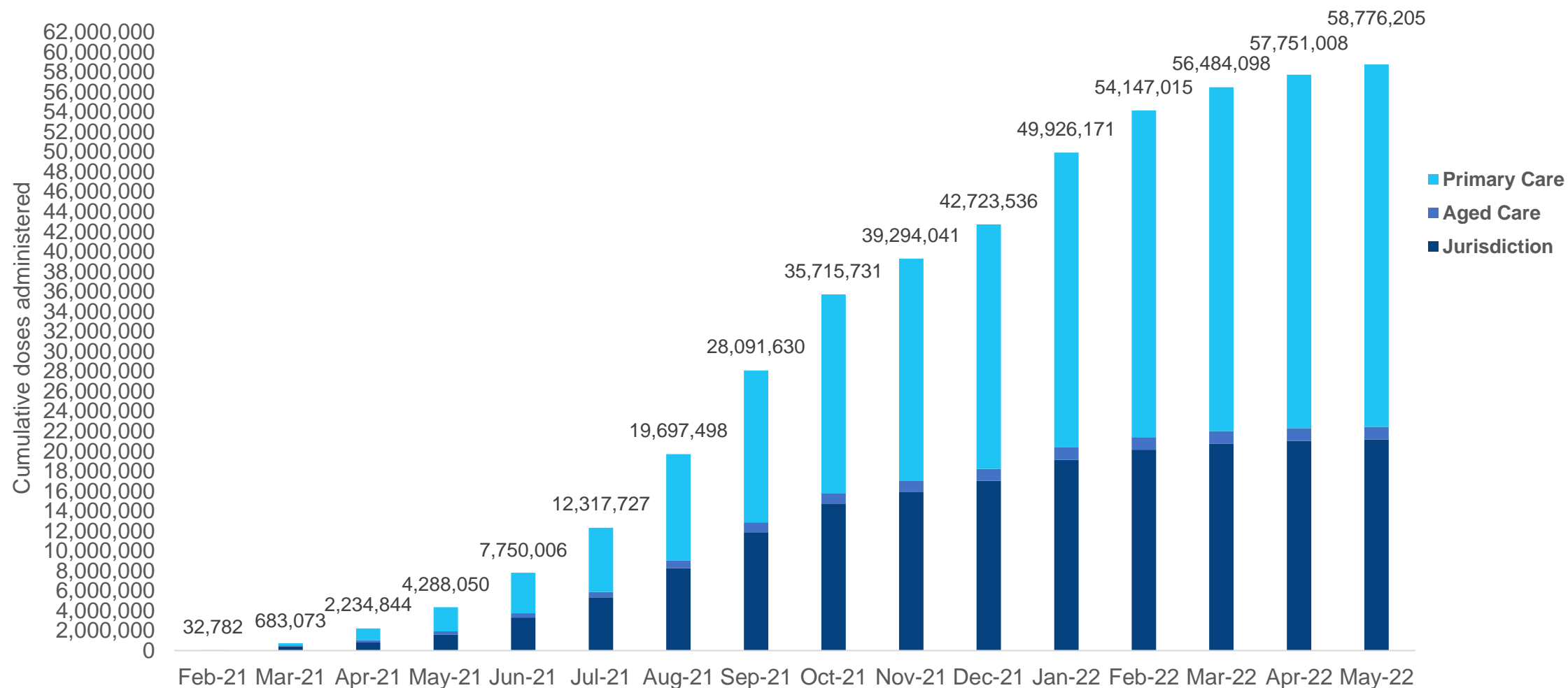
*Sourced from the Australian Immunisation Register. Numbers are calculated as difference in daily cumulative reported numbers to allow for historical corrections.

Source: Australian Immunisation Register

Cumulative doses administered by channel

Data as at:
21 May 2022

Australia's COVID-19
Vaccine Roadmap



Source: Australian Immunisation Register

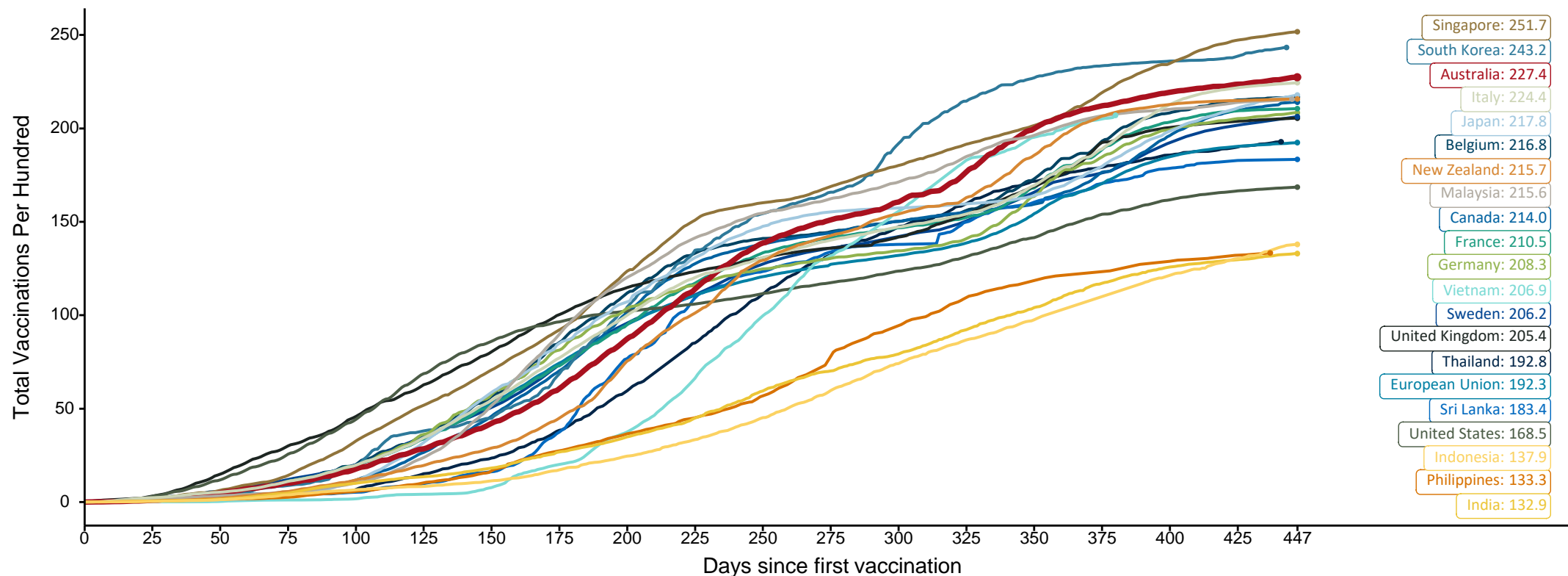
Doses at equivalent stages of rollout (Day 447)

Data as at:
15 May 2022
Updated weekly

Australia's COVID-19
Vaccine Roadmap

The x-axis is truncated at the length of Australia's vaccination program. Countries with intermittent reporting have had their doses per 100 imputed to Australia's current stage of rollout. Israel excluded as it is beyond scale of the graph

Cumulative doses administered (15 May): **58,427,221**



Note: From 11 January 2022, data for Australia includes all doses administered to people 5 and over. Prior to 11 January, data was for 12 and over.

Source: Department of Health (Australia), Our World in Data (international)

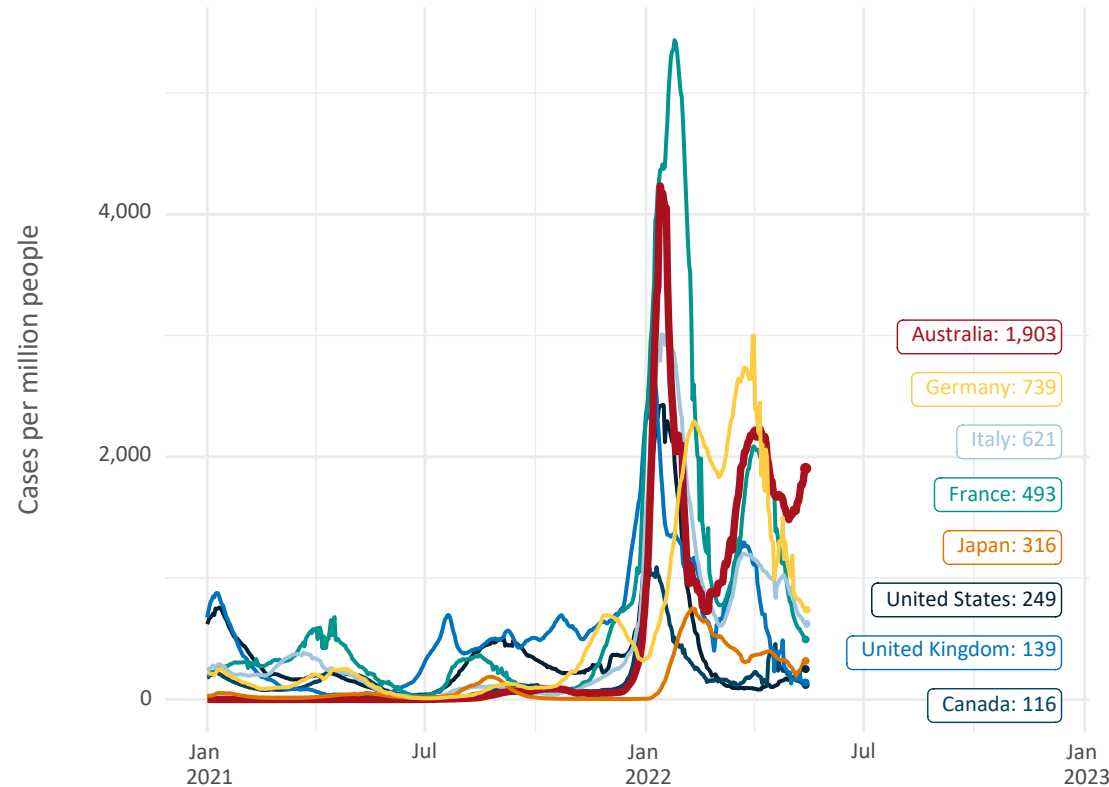
Latest data: 15 May

International data – COVID-19

Australia's COVID-19
Vaccine Roadmap

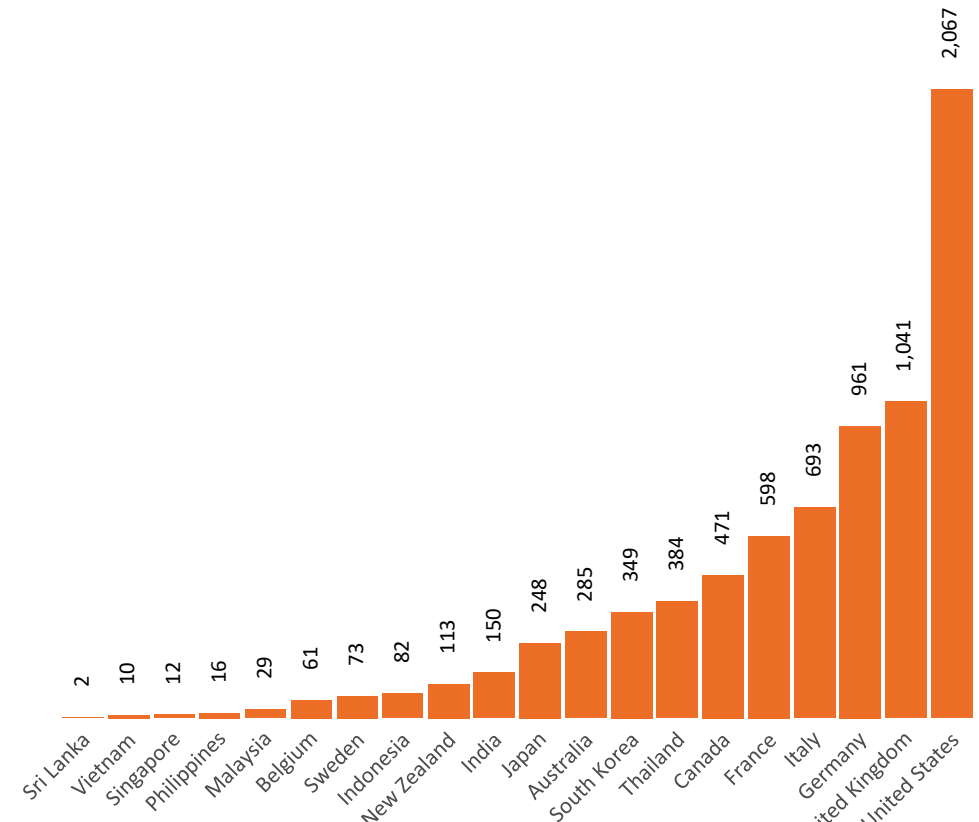
Data as at:
15 May 2022
Updated weekly

New daily cases per million since 2021, Australia and G7 countries
Smoothed - 7 day average



Source: OWID
Data downloaded: 16 May 2022 11:47
Latest data: 15 May 2022

COVID-19 deaths in past 7 days - Australia and select countries



Source: OWID
Data downloaded: 16 May 2022 11:47
Latest data: 15 May 2022

Pandemic Response Payments

Australia's COVID-19
Vaccine Roadmap

Data as at midnight:
15 May 2022 (updated weekly)

2.38 million

People have received at least one
COVID Disaster Payment
(including ISP200)

8.04 million

Claims granted across
three different payments

\$14.48 billion

Paid Out as at 15 May 2022

Claims Received Digitally

93%

Three payments available:

COVID Disaster Payment

assisting during a lockdown event
in a Commonwealth hotspot.

Income Support Payment \$200

for income support recipients who
lost at least 8 hours of work.

Pandemic Leave Disaster

for those who have to self-isolate,
quarantine or care.

For more information visit:

www.servicesaustralia.gov.au



COVID Disaster Payment: 5.89 million claims received - 2.19 million individuals paid a total of \$12.59 billion.

\$200 Income Support Payment: 353,000 claims received - 183,000 individuals paid a total of \$268.92 million.

Pandemic Leave Disaster Payment: 2.31 million claims received - 1.38 million individuals paid a total of \$1.61 billion.

COVID-19 DISASTER PAYMENTS

