



**Australian Government**  
**Operation COVID Shield**

# COVID-19 Vaccine Roll-out

02 May 2022

Data as at:  
01 May 2022

## Total vaccine doses



**57,759,823** total vaccine doses administered nationally as at 01 May

**+8,815** recorded in the last 24 hours



**20,021,411**

people have had at least one dose

**>95%**

of people over the age of 16 have had at least one dose



**19,688,417**

people are fully vaccinated

**>95%**

of people over the age of 16 are fully vaccinated



**13,426,952**

people over the age of 16 who have received more than two doses

**NSW**  
**17,917,702**  
(+1,810 daily increase)

**VIC**  
**15,193,238**  
(+2,452 daily increase)

**QLD**  
**10,932,435**  
(+1,613 daily increase)

**WA**  
**6,348,727**  
(+1,409 daily increase)

**TAS**  
**1,301,768**  
(+188 daily increase)

**SA**  
**3,982,837**  
(+907 daily increase)

**ACT**  
**1,506,383**  
(+414 daily increase)

**NT**  
**576,733**  
(+22 daily increase)

\*Administration state breakdown indicates state in which a vaccine was administered

\*\*Overall dose count includes instances of more than three doses per person in a small number of cases.

# Booster Vaccinations

Data as at:  
01 May 2022



**208,805**

Indigenous people who have received three or more doses

**52.9%**

of eligible population (394,751)



**164,900**

Aged Care Residents who have received three or more doses##

**96.6%**

of eligible population (170,624)



**182,863**

NDIS participants

who have received three or more doses#

**74.0%**

of eligible population (247,000)

**21,182**

NDIS residents

who have received three or more doses#

**88.2%**

of eligible population (24,000)



**13,426,952**

total people who have received three or more doses

**+3,028** daily increase

**69.3%** of eligible population (19,385,912)

	Number of People	Daily Increase	% of Eligible
NSW	4,102,201	478	66.3%
VIC	3,596,127	857	71.3%
QLD	2,324,770	573	62.6%
WA	1,641,272	661	84.2%
SA	951,045	285	72.5%
TAS	306,508	37	72.0%
ACT	266,343	124	77.2%
NT	125,145	19	75.7%

\*People may belong to multiple groups and could be represented in the above breakdowns multiple times.

# NDIS participants data as at 28 April 2022.

## Aged Care Residents data as at 29 April 2022.

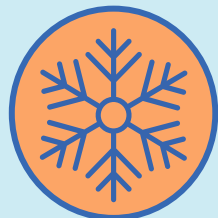
Source: Australian Immunisation Register

**113,541**

doses administered to persons residing in other territories or with missing residential information

# Winter / Fourth Doses

Data as at:  
01 May 2022  
Updated weekly



**500,924** total people (16+) who have received four or more doses

**+155,095** weekly increase

	Number of People 16+	Weekly Increase
ACT	13,392	3,455
NSW	170,986	49,550
NT	2,973	656
QLD	96,536	31,058
SA	35,285	11,715
TAS	14,020	4,807
VIC	125,651	39,760
WA	39,626	13,349

**2,455** doses administered to persons  
residing in other territories or with  
missing residential information

Source: Australian Immunisation Register

Data as at:  
01 May 2022

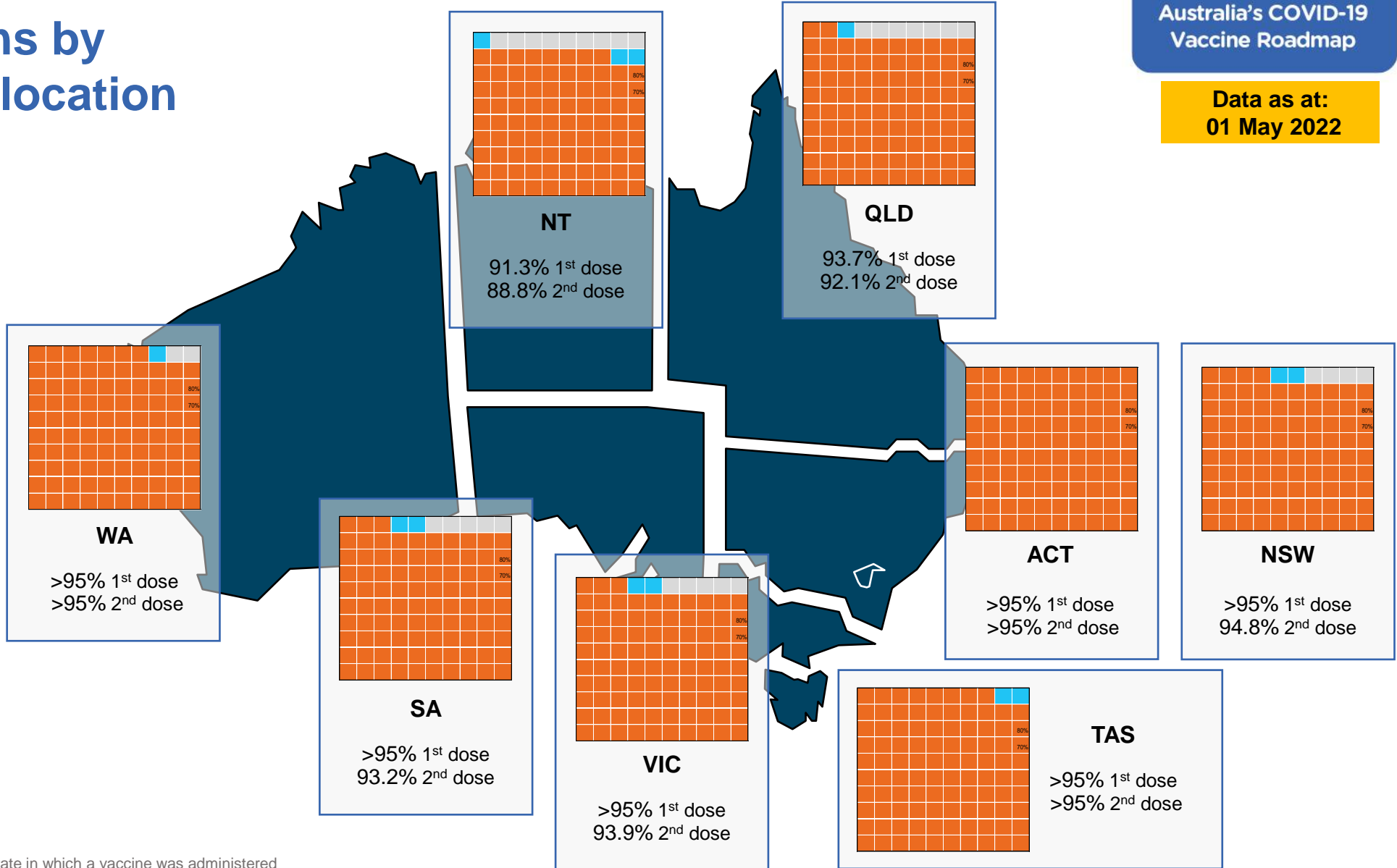
# Vaccinations by residential location

## First doses

Age	Today	4 weeks ago	8 weeks ago
16+	>95%	>95%	>95%
50+	>95%	>95%	>95%
70+	>95%	>95%	>95%

## Fully vaccinated

Age	Today	4 weeks ago	8 weeks ago
16+	>95%	>95%	94.9%
50+	>95%	>95%	>95%
70+	>95%	>95%	>95%



\*Residential state may differ from the state in which a vaccine was administered

# Commonwealth and Jurisdiction vaccine doses administered

Data as at:  
01 May 2022



**57,759,823** total vaccine doses administered nationally as at 01 May

**+ 8,815** recorded in the last 24 hours



**21,028,735**

doses administered by state and territory facilities

**+ 2,506**

recorded in the last 24 hours

NSW	Jurisdictions	Commonwealth
Cumulative	5,100,424	12,817,278
Daily increase	<10	1,806

TAS	Jurisdictions	Commonwealth
Cumulative	619,941	681,827
Daily increase	33	155

VIC	Jurisdictions	Commonwealth
Cumulative	6,059,478	9,133,760
Daily increase	835	1,617

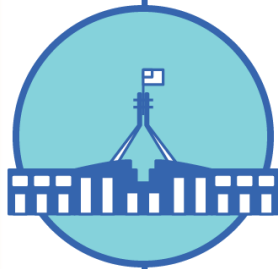
SA	Jurisdictions	Commonwealth
Cumulative	1,801,765	2,181,072
Daily increase	578	329

QLD	Jurisdictions	Commonwealth
Cumulative	3,837,968	7,094,467
Daily increase	103	1,510

ACT	Jurisdictions	Commonwealth
Cumulative	777,577	728,806
Daily increase	340	74

WA	Jurisdictions	Commonwealth
Cumulative	2,491,276	3,857,451
Daily increase	593	816

NT	Jurisdictions	Commonwealth
Cumulative	340,306	236,427
Daily increase	20	<10



**36,731,088**

doses administered by commonwealth facilities

**+ 6,309**

recorded in the last 24 hours

**35,455,494** total vaccine doses administered in primary care settings

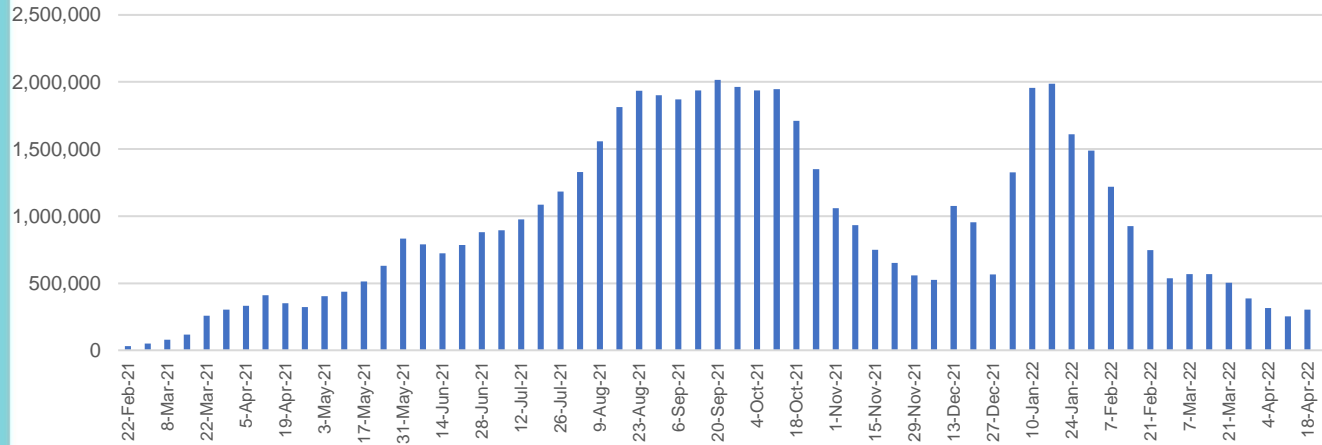
**1,275,594** total vaccine doses administered in aged care and disability settings

# Vaccine milestone charts

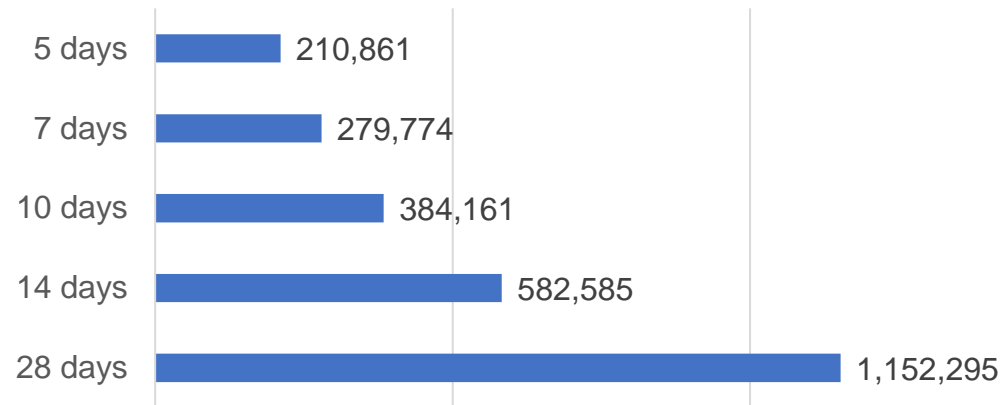
Data as at:  
01 May 2022

Australia's COVID-19  
Vaccine Roadmap

Doses Administered by Week

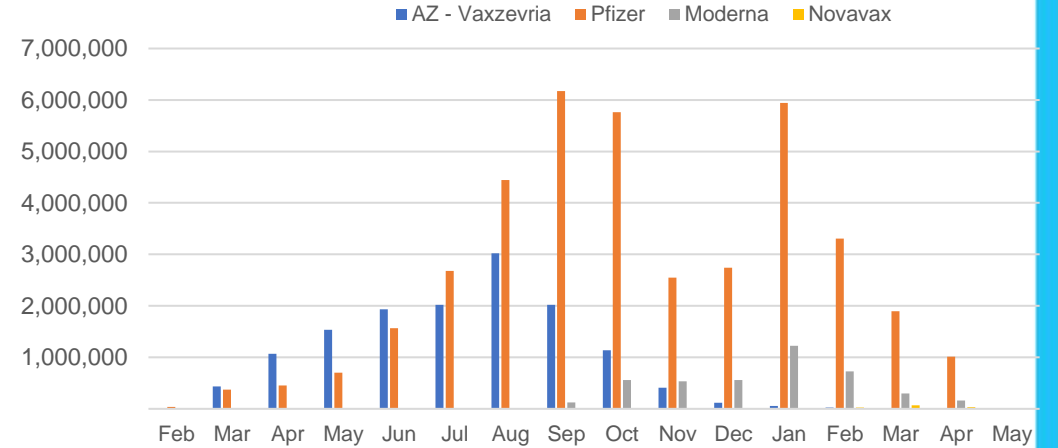


Doses Reported

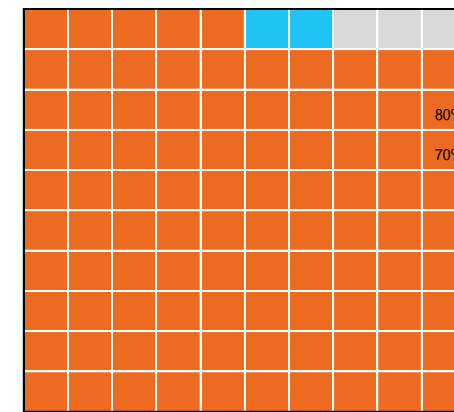


\*Sourced from the Australian Immunisation Register.

Doses by administration month and vaccine type



Eligible population percentage coverage



1st dose: > 95.0% 2nd dose: > 95.0%

\*Each square represents 1% of the national population. Squares are filled as milestones are achieved.

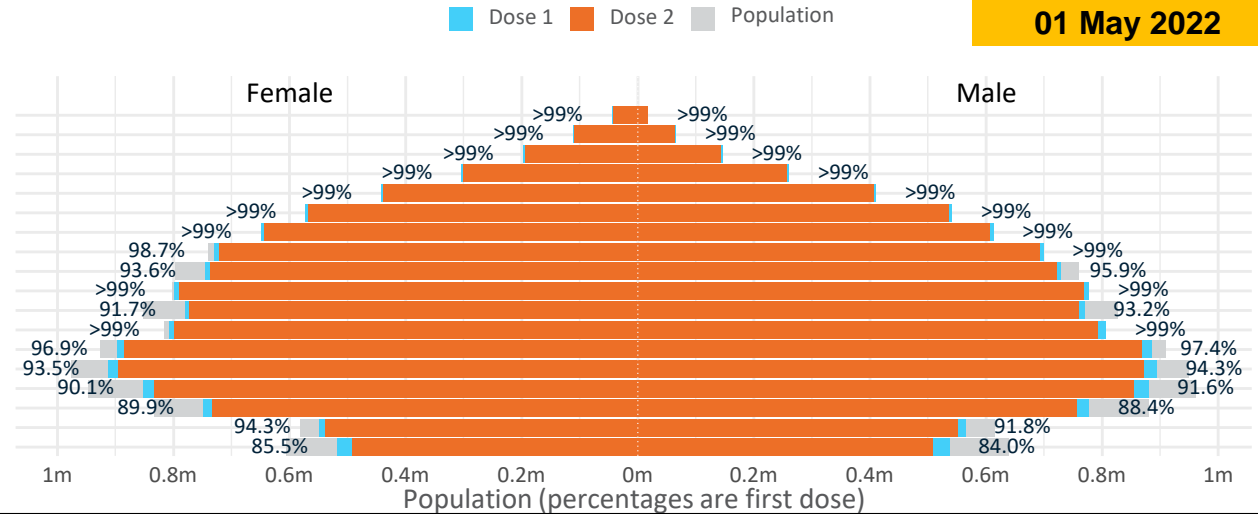
# Doses by age and sex

First and second doses by age and sex

	16+	50+	12-15	5-11
Dose 1	97.10% (20,021,411 doses / 20,619,959 people)	>99% (8,862,640 doses / 8,749,703 people)	84.80% (1,054,877 doses / 1,243,990 people)	52.84% (1,202,987 doses / 2,276,638 people)
Dose 2	95.48% (19,688,417 doses / 20,619,959 people)	>99% (8,756,173 doses / 8,749,703 people)	80.39% (1,000,068 doses / 1,243,990 people)	36.91% (840,314 doses / 2,276,638 people)

Data as at: 01 May 2022

Age	Dose 1	Dose 2
95+	62,174 (>99%)	58,790 (>99%)
90-94	177,518 (>99%)	171,890 (>99%)
85-89	344,390 (>99%)	337,394 (>99%)
80-84	564,466 (>99%)	557,166 (>99%)
75-79	852,914 (>99%)	844,520 (>99%)
70-74	1,114,621 (>99%)	1,103,636 (>99%)
65-69	1,263,719 (>99%)	1,249,536 (>99%)
60-64	1,430,615 (>99%)	1,414,496 (98.5%)
55-59	1,475,481 (94.8%)	1,459,022 (93.8%)
50-54	1,576,742 (>99%)	1,559,723 (>99%)
45-49	1,551,522 (92.5%)	1,532,895 (91.4%)
40-44	1,617,126 (>99%)	1,592,993 (98.3%)
35-39	1,787,802 (97.4%)	1,755,807 (95.7%)
30-34	1,814,218 (94.3%)	1,772,737 (92.2%)
25-29	1,742,427 (91.4%)	1,695,248 (88.9%)
20-24	1,532,898 (89.5%)	1,493,746 (87.2%)
16-19	1,112,778 (93.1%)	1,088,818 (91.1%)
12-15	1,054,877 (84.8%)	1,000,068 (80.4%)



	AUS	ACT	NSW	NT	QLD	SA	TAS	VIC	WA
16 and over - dose 1	20,021,411	352,116	6,317,148	173,915	3,852,586	1,372,559	444,277	5,151,758	2,091,082
16 and over - dose 2	19,688,417	346,604	6,221,632	169,143	3,788,466	1,342,969	435,084	5,075,513	2,059,424
16 and over - population	20,619,959*	344,037	6,565,651	190,571	4,112,707	1,440,400	440,172	5,407,574	2,114,978
16 and over % with dose 1	97.10%	>99%	96.22%	91.26%	93.68%	95.29%	>99%	95.27%	98.87%
16 and over % with dose 2	95.48%	>99%	94.76%	88.76%	92.12%	93.24%	98.84%	93.86%	97.37%
5 to 11 - dose 1	1,202,987	31,969	358,490	13,248	209,300	84,413	28,816	327,148	141,670
5 to 11 - dose 2	840,314	26,094	253,213	7,962	142,442	59,850	22,599	230,315	93,516
5 to 11 - population	2,276,638	39,789	716,460	24,750	478,731	148,816	45,033	578,499	244,154
5 to 11 % with dose 1	52.84%	80.35%	50.04%	53.53%	43.72%	56.72%	63.99%	56.55%	58.02%
5 to 11 % with dose 2	36.91%	65.58%	35.34%	32.17%	29.75%	40.22%	50.18%	39.81%	38.30%
12 to 15 - dose 1	1,054,877	20,098	324,524	10,861	206,946	68,449	22,934	275,561	115,837
12 to 15 - dose 2	1,000,068	19,558	310,227	9,794	194,008	64,863	21,847	263,999	107,332
12 to 15 - population	1,243,990	19,693	390,330	13,060	270,146	82,747	26,308	308,611	132,869
12 to 15 % with dose 1	84.80%	>99%	83.14%	83.16%	76.61%	82.72%	87.18%	89.29%	87.18%
12 to 15 % with dose 2	80.39%	>99%	79.48%	74.99%	71.82%	78.39%	83.04%	85.54%	80.78%

\*National population will not equal sum of listed jurisdictions due to a small number of people counted in national population residing in some 'other' territories. Sum of state doses will not add to national total as some records are unable to be geocoded to a State or Territory. Doses sourced from Australian Immunisation Register, population from ABS ERP June 2020

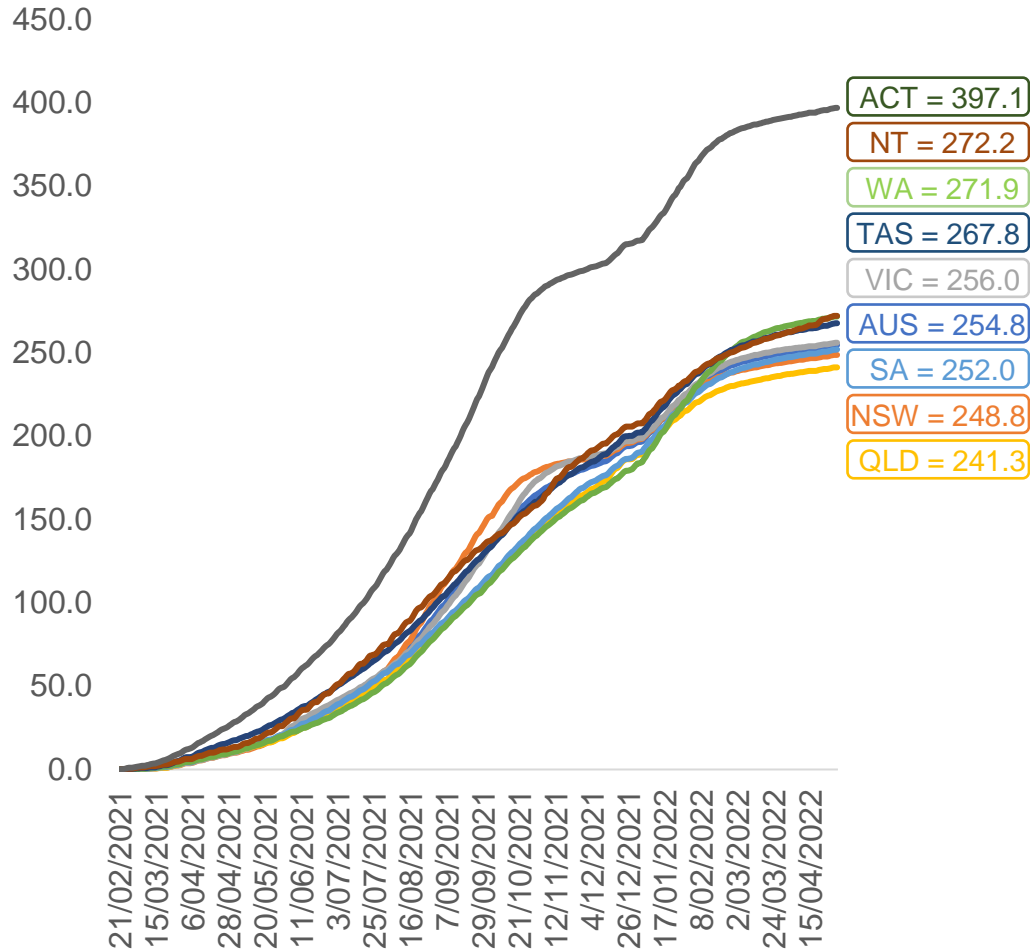


# Vaccinations by location

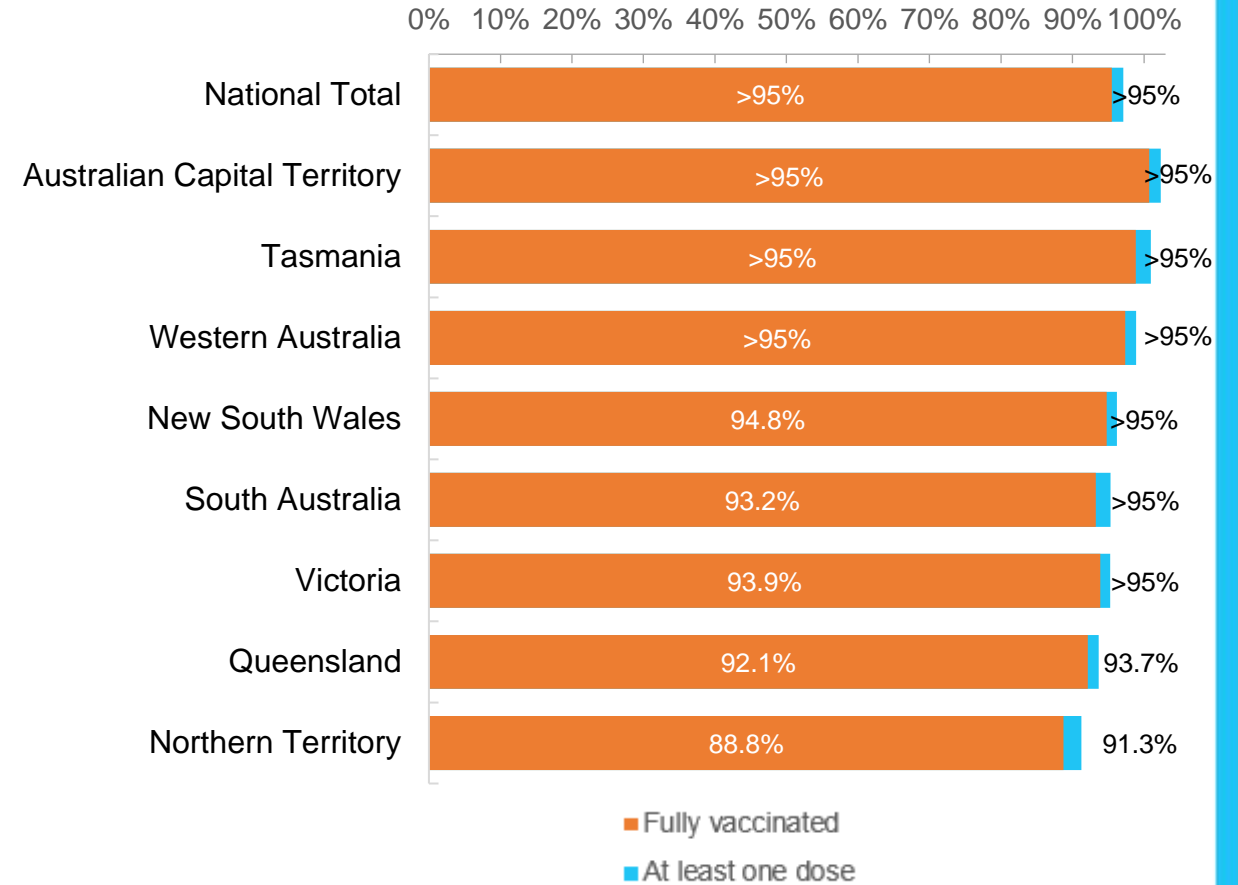
Data as at:  
01 May 2022

Australia's COVID-19  
Vaccine Roadmap

Cumulative total doses administered vs eligible state populations\*



First and Second Doses by residential location



\*Not an indication of percentage vaccinated, numbers will exceed 100 due to multiple doses required per person of the population. All doses are included for those aged 12 and above, and are based on vaccination provider location.

# Aboriginal and Torres Strait Islander peoples

## Number of people vaccinated

Data as at:  
26 Apr 2022  
Updated weekly

Australia's COVID-19  
Vaccine Roadmap



**438,702**

people over the age of 16  
have had at least one dose

**84.4%**

of people over the age of 16  
have had at least one dose



**419,101**

people over the age of 16  
are fully vaccinated

**80.7%**

of people over the age of 16 are  
fully vaccinated



People aged 12 – 15 years

**48,565**

**42,691**

**68.4%**

At least one dose

**60.1%**

Fully vaccinated

### 178 Aboriginal community controlled health services (ACCHS)

0#	50	27	44	12	3	21	21
<b>ACT</b>	<b>NSW</b>	<b>NT</b>	<b>QLD</b>	<b>SA</b>	<b>TAS</b>	<b>VIC</b>	<b>WA</b>

Medicare Address State <sup>##</sup>	Individuals Dose 1	Individuals Dose 1 %	Individuals Dose 2	Individuals Dose 2 %
Australian Capital Territory	4,792	90.9%	4,673	88.7%
New South Wales	134,640	86.7%	131,513	84.7%
Northern Territory	41,630	89.5%	39,417	84.7%
Queensland	115,367	81.3%	109,778	77.4%
South Australia	19,850	80.0%	18,390	74.1%
Tasmania	13,868	88.5%	13,457	85.9%
Victoria	35,361	89.8%	34,565	87.8%
Western Australia	53,497	86.1%	49,322	79.4%
Unknown/Other Territories	19,697	68.5%	17,986	62.6%
<b>Totals</b>	<b>438,702</b>	<b>84.4%</b>	<b>419,101</b>	<b>80.7%</b>

Source: Australian Immunisation Register

\*Identifying as Aboriginal and Torres Strait Islander is optional and the estimated population may be under reported.

\*\*Includes all Aboriginal and Torres Strait Islander peoples who have received a vaccination, not limited to those administered in an ACCHS setting

#ACCHS in the ACT are currently operating as a Commonwealth Vaccine Clinics so not included to avoid double counting

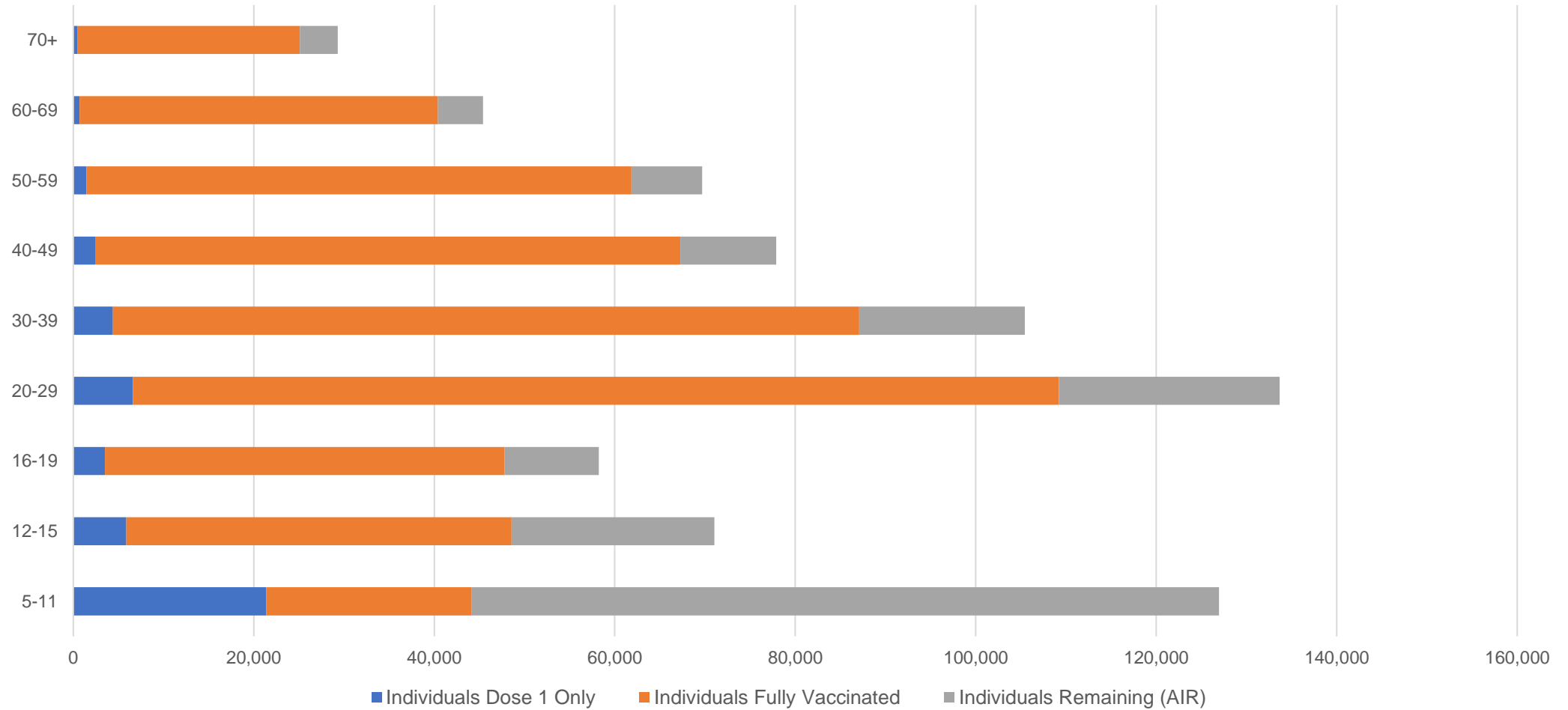
##The above table includes all identified Aboriginal and Torres Strait Islander people who are aged 16 and above by their state of residence.

# Aboriginal and Torres Strait Islander peoples

## Number of people vaccinated by age

Data as at:  
26 Apr 2022  
Updated weekly

Australia's COVID-19  
Vaccine Roadmap



Source: Australian Immunisation Register

# Commonwealth primary care

Data as at:  
01 May 2022

Australia's COVID-19  
Vaccine Roadmap



## Primary care vaccine administration sites

<b>5,797</b>	<b>128</b>	<b>178</b>	<b>3,598</b>
GPs	CVCs	ACCHS	Pharmacies



**35,455,494** total vaccine doses administered  
primary care settings as at 01 May  
**+ 6,259** recorded in the last 24 hours

## Primary care vaccinations by provider type

	Doses administered	Daily increase	7 day increase
<b>General Practice*</b> includes other Commonwealth	28,527,798	4,339	161,586
<b>Pharmacy</b>	6,927,696	1,920	69,509



**308,186**

doses administered to persons residing in other territories or with missing residential information

\*General practice includes Commonwealth Vaccination Clinics, Aboriginal Community Health Centres, Royal Flying Doctor Service and other Commonwealth vaccination facilities

Source: Australian Immunisation Register

Data as at:  
01 May 2022

# Commonwealth aged care and disability doses administered



**1,275,594** (+ 50 last 24 hours)

Total vaccine doses administered in aged care and disability facilities as at 01 May

Number of doses administered as part of the Commonwealth aged and disability care rollout

**NSW**  
**559,648**  
( $<10$  daily increase)

**VIC**  
**236,327**  
( $<10$  daily increase)

**QLD**  
**203,093**  
(+44 daily increase)

**WA**  
**108,248**  
( $<10$  daily increase)

**TAS**  
**23,068**  
( $<10$  daily increase)

**SA**  
**84,076**  
( $<10$  daily increase)

**ACT**  
**17,147**  
( $<10$  daily increase)

**NT**  
**7,525**  
( $<10$  daily increase)

**36,462**

doses administered to persons residing in other territories or with missing residential information

\*Sourced from the Australian Immunisation Register. Includes all persons vaccinated at participating residential aged care, disability and related industry settings.

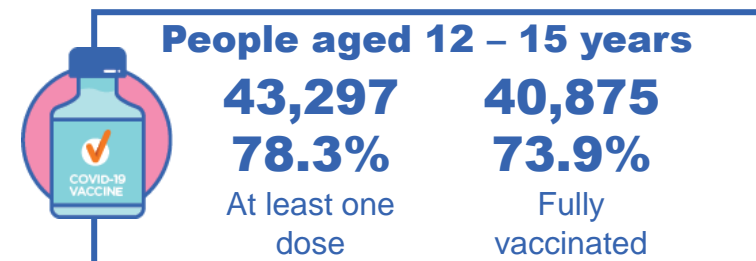
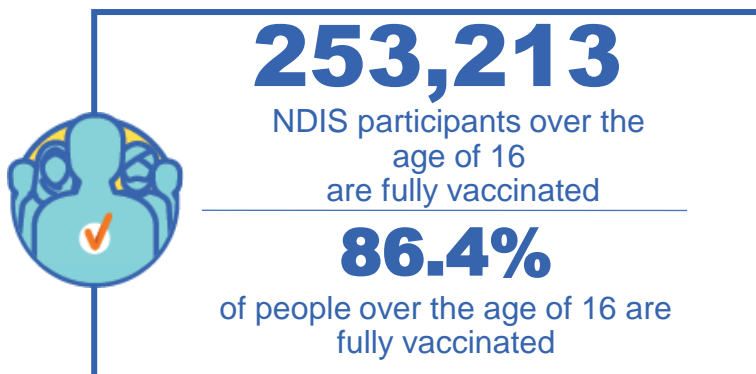
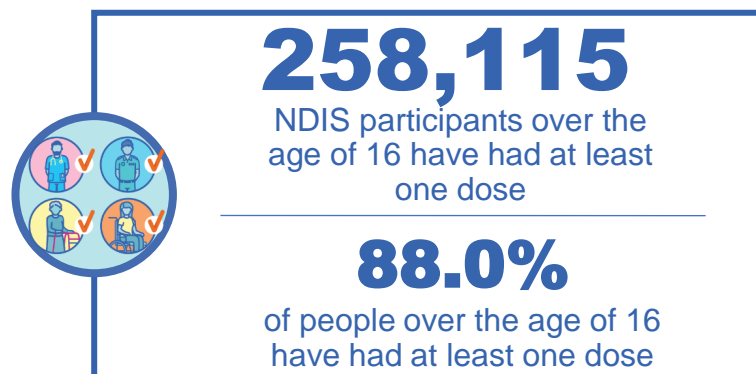
\*\*State level breakdown indicates the residential location and may not align to the state in which the vaccination occurred.

Source: Australian Immunisation Register

# National Disability Insurance Scheme (NDIS) reported vaccinations

Data as at:  
28 April 2022  
Updated weekly

Australia's COVID-19  
Vaccine Roadmap



## NDIS participant vaccinations

	People aged 16+ with at least one dose	People aged 16+ fully vaccinated	% People aged 16+ with at least one dose	% People aged 16+ fully vaccinated
ACT	4,872	4,807	<b>89.8%</b>	<b>88.6%</b>
NSW	79,259	77,947	<b>88.3%</b>	<b>86.9%</b>
NT	2,231	2,161	<b>78.2%</b>	<b>75.7%</b>
QLD	50,903	49,915	<b>86.5%</b>	<b>84.8%</b>
SA	21,060	20,533	<b>85.8%</b>	<b>83.7%</b>
TAS	6,462	6,307	<b>87.9%</b>	<b>85.8%</b>
VIC	68,696	67,473	<b>89.2%</b>	<b>87.6%</b>
WA	24,632	24,070	<b>89.5%</b>	<b>87.4%</b>
<b>National</b>	<b>258,115</b>	<b>253,213</b>	<b>88.0%</b>	<b>86.4%</b>

Source: Linkage between National Disability Insurance Agency data and the Australian Immunisation Register. Total NDIS participant numbers as at 28 February. Australian Immunisation Register data as at 27 April. Includes all participants regardless of residence type.

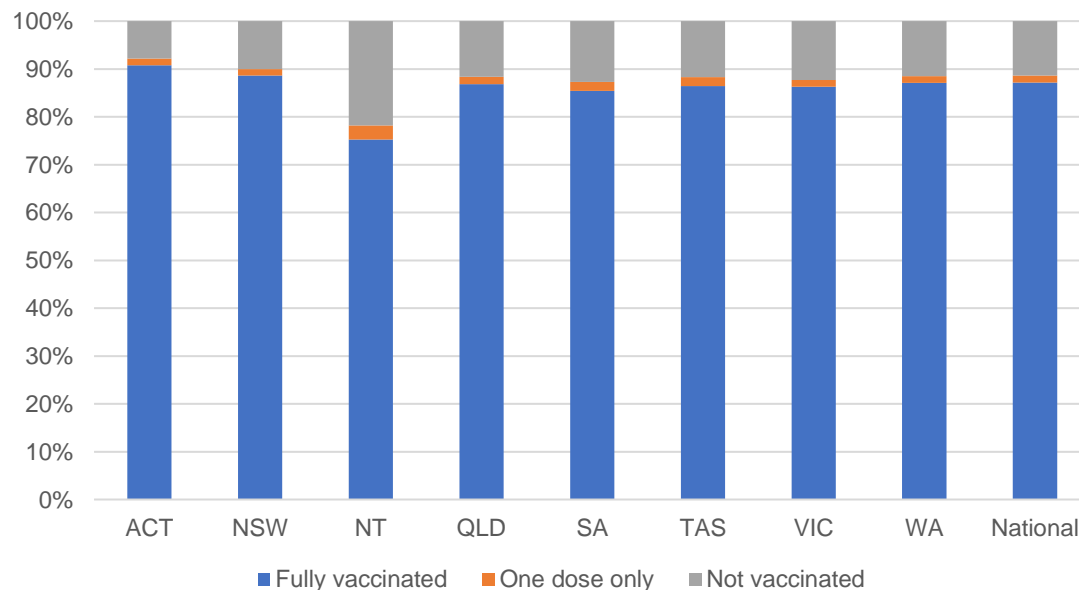
# National Disability Insurance Scheme (NDIS) reported vaccinations

Data as at:  
28 April 2022  
Updated Weekly

Australia's COVID-19  
Vaccine Roadmap

NATIONAL	Total people with at least one dose	People fully vaccinated	Total number of individuals in cohort	% People with at least one dose	% People fully vaccinated
NDIS participants living in disability accommodation	20,760	20,423	23,352	88.9%	87.5%

## NDIS participants in disability and aged care accommodation



Source: Linkage between National Disability Insurance Agency data and the Australian Immunisation Register. Includes participants residing in disability accommodation only.  
Source: Total NDIS participant numbers as at 28 February. Participant data as at 27 April. Australian Immunisation Register data as at 27 April. Worker data as at 28 April.

## NDIS workforce vaccinations

	NDIS workers with at least one dose	NDIS workers fully vaccinated	% NDIS workers with at least one dose	% NDIS workers fully vaccinated
NSW	121,663	117,932	98.2%	95.2%
VIC	116,682	112,949	98.4%	95.2%
QLD	69,644	68,794	97.5%	96.3%
WA	32,930	31,241	98.6%	93.6%
SA	35,456	32,934	98.5%	91.5%
TAS	10,720	10,503	99.6%	97.6%
ACT	3,510	3,462	99.0%	97.6%
NT	3,447	3,298	99.4%	95.1%
<b>TOTAL</b>	<b>394,052</b>	<b>381,113</b>	<b>98.2%</b>	<b>95.0%</b>

Source: the NDIS Commission has established a requirement for registered NDIS providers who provide intensive disability support services to report on the vaccination status of workers they employ, or otherwise engage, to deliver NDIS-funded supports and services, and who are required to be vaccinated in accordance with in-force state and territory public health orders. The statistics reflect data reported to the NDIS Commission by registered NDIS providers and should be considered indicative and subject to change

Note: Some registered NDIS providers are yet to report on the vaccination status of their workforce. The NDIS Commission is working with those providers around reporting requirements.

Remaining workers not included include those exempt from vaccination requirements, workers whose vaccination status is not yet verified by the provider (such as workers on leave) and provider reporting anomalies.

# Residential aged care vaccination rollout

Residential aged care facilities status

**170,624** **172,394**

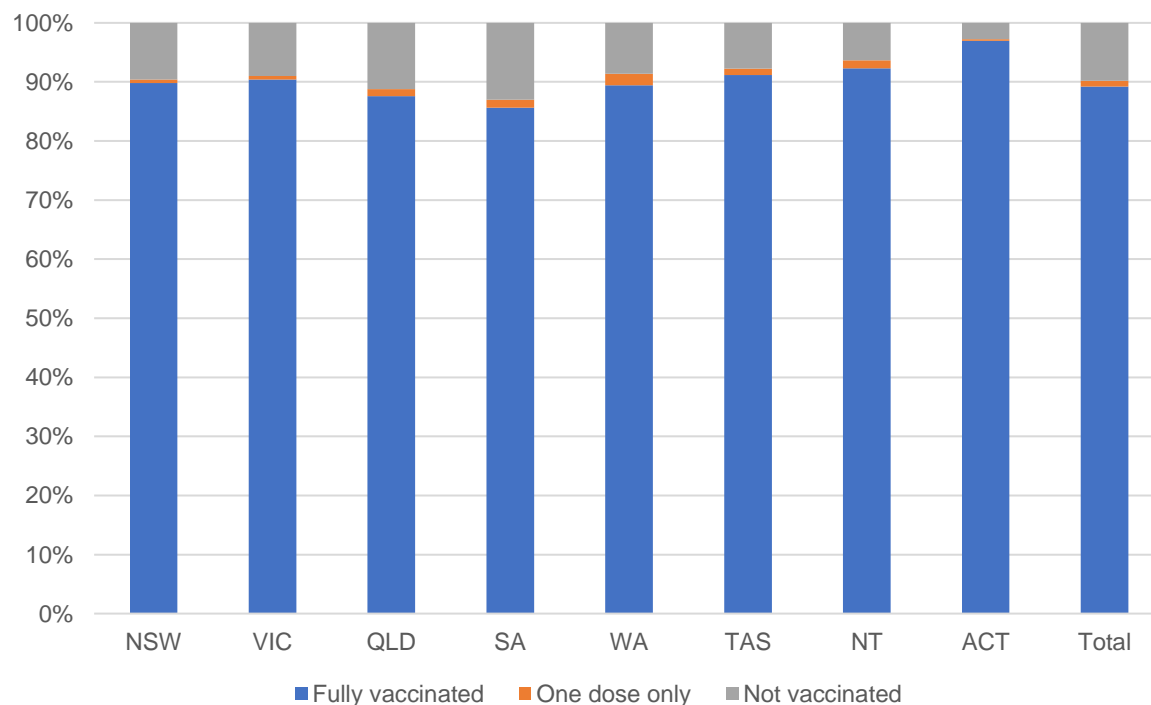
People fully vaccinated

People with at least one dose

Australia's COVID-19 Vaccine Roadmap

Data as at:  
28 Apr 2022  
Updated weekly

## Aged care resident vaccinations



## Aged care worker vaccinations

Jurisdictions	Total workers with at least one dose	Workers fully vaccinated	% Workers with at least one dose	% Workers fully vaccinated
NSW	75,060	75,053	96.4%	96.4%
VIC	65,066	65,062	94.7%	94.7%
QLD	45,853	45,616	95.2%	94.7%
SA	26,224	26,208	96.1%	96.1%
WA	24,071	24,069	99.2%	99.2%
TAS	7,547	7,544	99.9%	99.9%
NT	902	902	100.0%	100.0%
ACT	2,855	2,855	93.9%	93.9%
<b>Total</b>	<b>247,578</b>	<b>247,309</b>	<b>96.0%</b>	<b>95.9%</b>

Source: My Aged Care Portal vaccination progress

\*Status updates are provided by facilities at least once per week. Reporting is updated Monday to Friday to encompass different facility updates being made on different days.

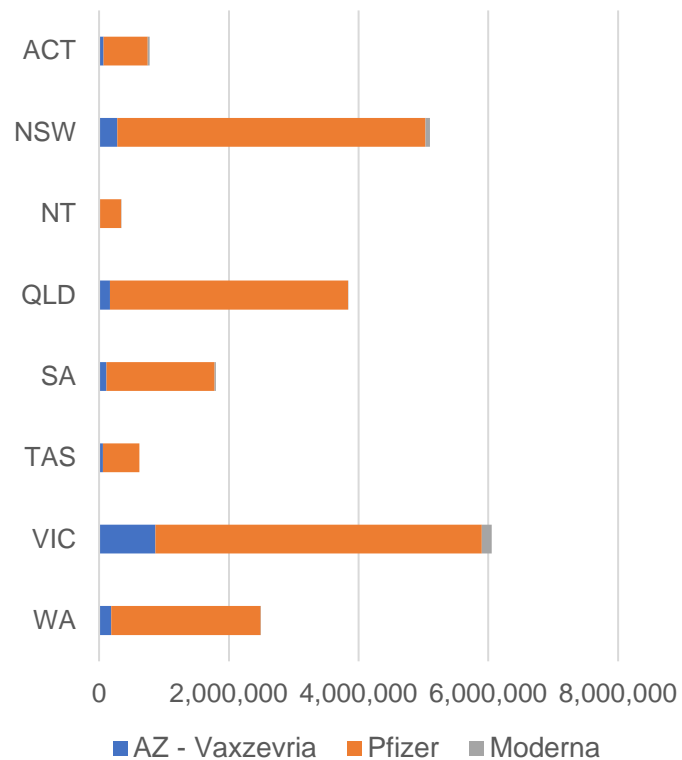
Data is sourced directly from Aged Care Service Providers and is not drawn or closely aligned with data from AIR due to inconsistencies and potential lags in uploading of records.



Data as at:  
01 May 2022

## Jurisdiction administered

Total vaccine doses administered in State and Territory clinics as at 01 May



**21,028,735** total vaccine doses administered in State and Territory clinics as at 01 May  
 + **2,506** recorded in the last 24 hours  
 + **46,206** recorded in the last 7 days

**NSW**  
**5,100,424**  
 (<10 daily increase)

**VIC**  
**6,059,478**  
 (+835 daily increase)

**QLD**  
**3,837,968**  
 (+103 daily increase)

**WA**  
**2,491,276**  
 (+593 daily increase)

**TAS**  
**619,941**  
 (+33 daily increase)

**SA**  
**1,801,765**  
 (+578 daily increase)

**ACT**  
**777,577**  
 (+340 daily increase)

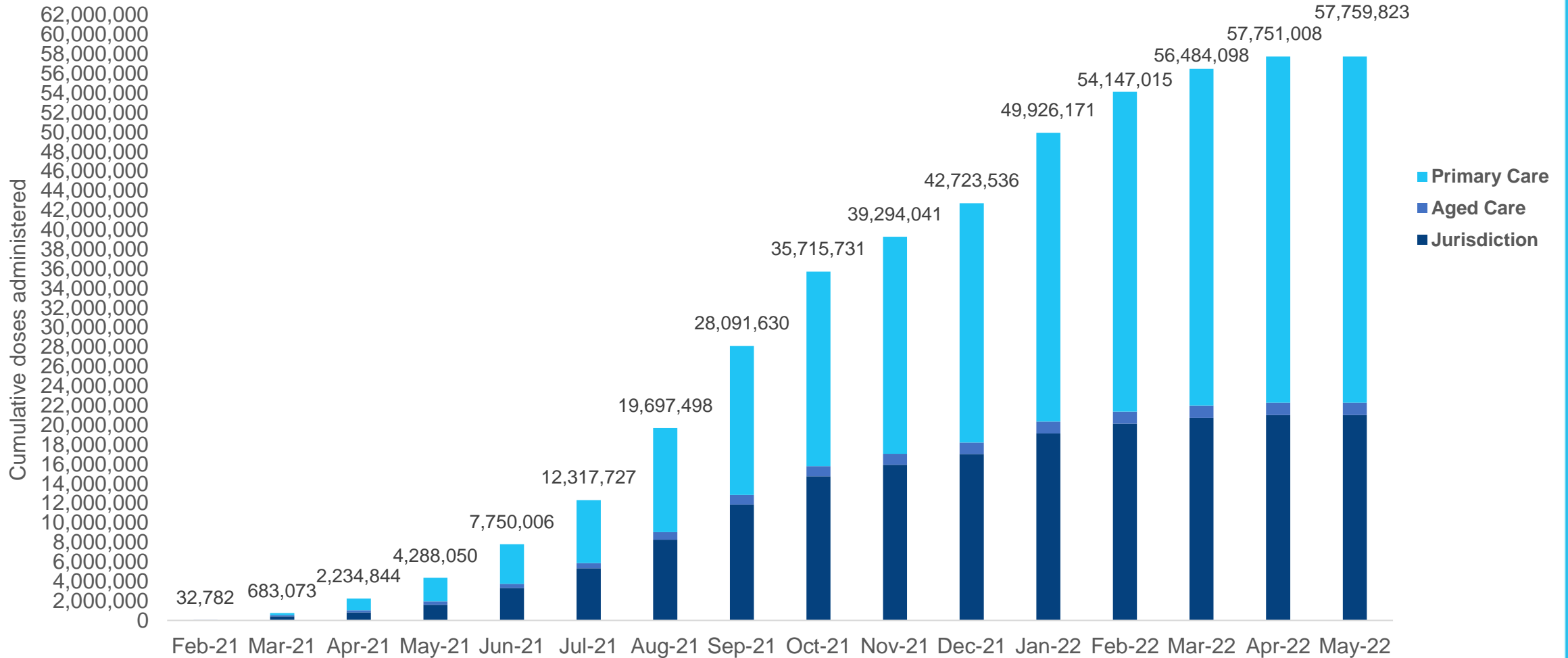
**NT**  
**340,306**  
 (+20 daily increase)

\*Sourced from the Australian Immunisation Register. Numbers are calculated as difference in daily cumulative reported numbers to allow for historical corrections.

Source: Australian Immunisation Register

Data as at:  
01 May 2022

# Cumulative doses administered by channel



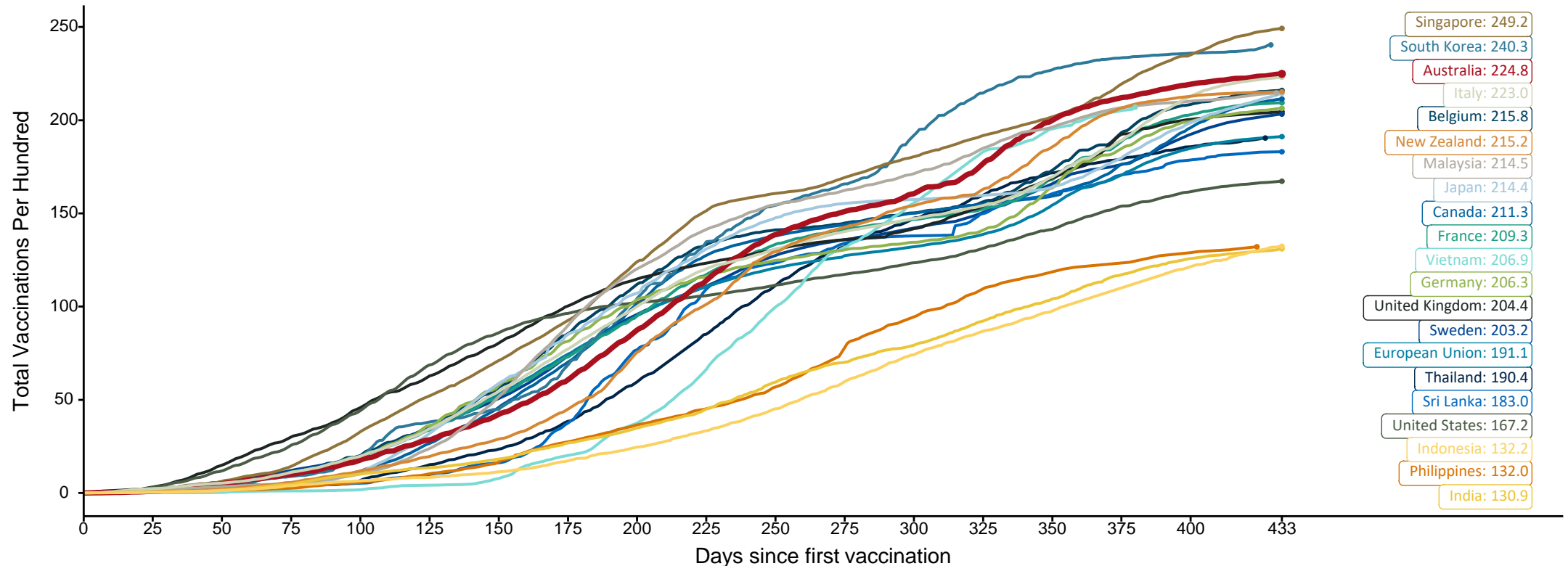
Source: Australian Immunisation Register

# Doses at equivalent stages of rollout (Day 433)

Data as at:  
01 May 2022

The x-axis is truncated at the length of Australia's vaccination program. Countries with intermittent reporting have had their doses per 100 imputed to Australia's current stage of rollout. Israel excluded as it is beyond scale of the graph

Cumulative doses administered (01 May): **57,759,823**

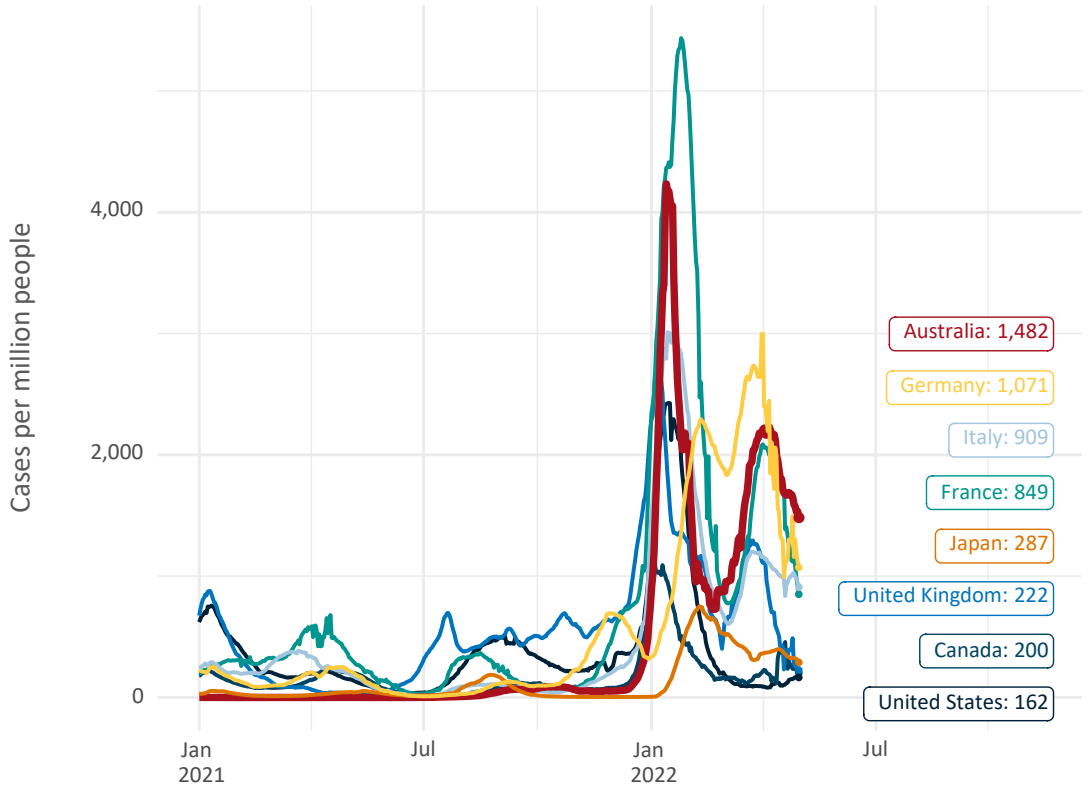


Note: From 11 January 2022, data for Australia includes all doses administered to people 5 and over. Prior to 11 January, data was for 12 and over.  
Source: Department of Health (Australia), Our World in Data (international)  
Latest data: 01 May

Data as at: 01 May 2022

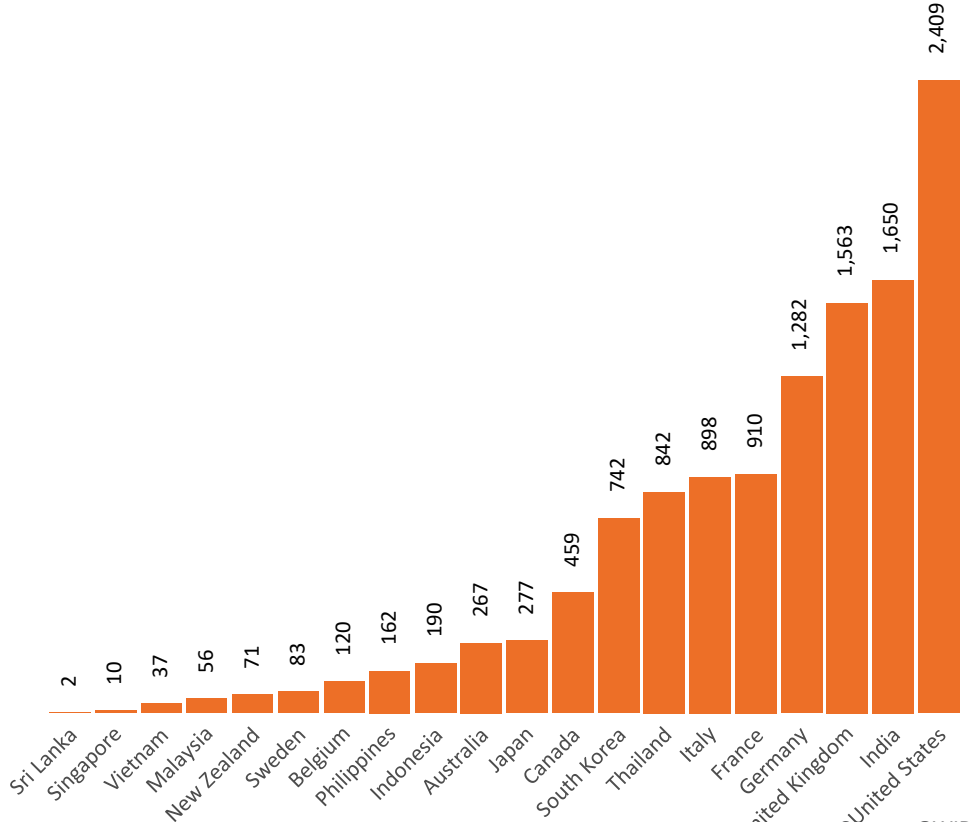
# International data – COVID-19

New daily cases per million since 2021, Australia and G7 countries  
Smoothed - 7 day average



Source: OWID  
Data downloaded: 02 May 2022 09:33  
Latest data: 30 Apr 2022


COVID-19 deaths in past 7 days - Australia and select countries



Source: OWID  
Data downloaded: 02 May 2022 09:33  
Latest data: 30 Apr 2022

# Pandemic Response Payments

Data as at midnight: 1 May 2022  
Updated weekly



**2.38 million**  
People have received at least one COVID Disaster Payment (including ISP200)

**\$14.35 billion**  
Paid Out as at 1 May 2022


**7.86 million**  
Claims granted across three different payments



**93%**  
of Claims Received Digitally



<b>COVID Disaster Payment:</b>	5.89 million claims received - 2.19 million individuals paid a total of \$12.59 billion.
<b>\$200 Income Support Payment:</b>	353,000 claims received - 183,000 individuals paid a total of \$268.9 million.
<b>Pandemic Leave Disaster Payment:</b>	2.12 million claims received - 1.29 million individuals paid a total of \$1.49 billion.



**THREE PAYMENTS AVAILABLE**

**COVID Disaster Payment**  
assisting during a lockdown event in a Commonwealth hotspot.

**Income Support Payment \$200**  
for income support recipients who lost at least 8 hours of work.

**Pandemic Leave Disaster Payment**  
for those who have to self-isolate, quarantine or care.

For more information visit:  
[servicesaustralia.gov.au](https://servicesaustralia.gov.au)

## COVID-19 DISASTER PAYMENTS

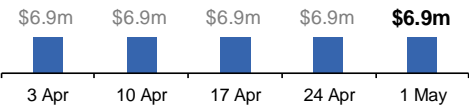
**Northern Territory**  
Lockdown (#3) from 16 Nov to 22 Nov  
Claiming period ended 27 Dec

**7,500 people have received at least one COVID Disaster Payment.**

**\$6.9m paid out as at 1 May 2022.**

**Nil paid in initial payments in the week ending 1 May 2022.**

Cumulative payments made by Territory since activation on 25 Aug 2021.



Date	Cumulative Payments
3 Apr	\$6.9m
10 Apr	\$6.9m
17 Apr	\$6.9m
24 Apr	\$6.9m
1 May	\$6.9m

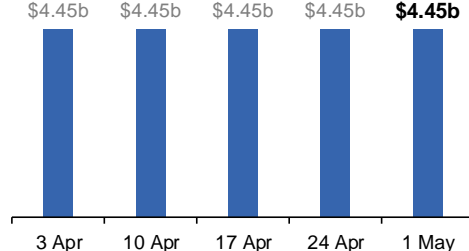
**Victoria**  
Lockdown (#6) from 6 Aug to 28 Oct  
Claiming period ended 9 Dec

**745,000 people have received at least one COVID Disaster Payment.**

**\$4.45b paid out as at 1 May 2022.**

**Nil paid in initial and reoccurring payments in the week ending 1 May 2022.**

Cumulative payments made by State since activation on 8 Jun 2021.



Date	Cumulative Payments
3 Apr	\$4.45b
10 Apr	\$4.45b
17 Apr	\$4.45b
24 Apr	\$4.45b
1 May	\$4.45b

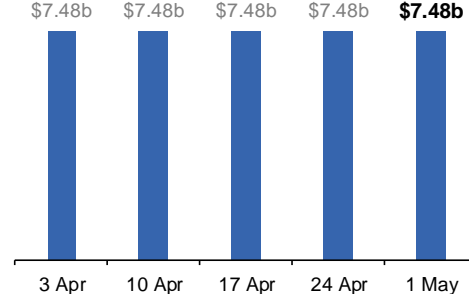
**New South Wales**  
Lockdown from 24 Jun to 10 Oct  
Claiming period ended 27 Nov

**1.08m people have received at least one COVID Disaster Payment.**

**\$7.48b paid out as at 1 May 2022.**

**Nil paid in initial and reoccurring payments in the week ending 1 May 2022.**

Cumulative payments made by State since activation on 1 Jul 2021.



Date	Cumulative Payments
3 Apr	\$7.48b
10 Apr	\$7.48b
17 Apr	\$7.48b
24 Apr	\$7.48b
1 May	\$7.48b

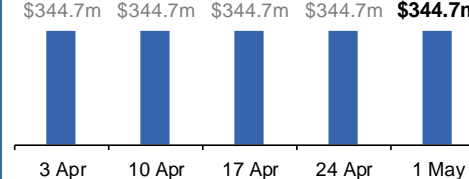
**Australian Capital Territory**  
Lockdown from 12 Aug to 14 Oct  
Claiming period ended 25 Nov

**65,000 people have received at least one COVID Disaster Payment.**

**\$344.7m paid out as at 1 May 2022.**

**Nil paid in initial and reoccurring payments in the week ending 1 May 2022.**

Cumulative payments made by Territory since activation on 20 Aug 2021.



Date	Cumulative Payments
3 Apr	\$344.7m
10 Apr	\$344.7m
17 Apr	\$344.7m
24 Apr	\$344.7m
1 May	\$344.7m

# Pandemic Response Payments (continued)

Data as at midnight: 1 May 2022  
Updated weekly

## COVID-19 DISASTER PAYMENTS

