



Australian Government
Operation COVID Shield

COVID-19 Vaccine Roll-out

19 May 2022

Data as at:
18 May 2022

Total vaccine doses



58,623,989 total vaccine
doses administered nationally as at 18 May
+69,559 recorded in the last 24 hours



20,049,383

people have had at least one
dose

>95%

of people over the age of 16
have had at least one dose



19,716,538

people are fully vaccinated

>95%

of people over the age of 16 are
fully vaccinated



13,601,950

people over the age of 16
who have received three or
more doses

NSW
18,182,433
(+21,158 daily
increase)

VIC
15,402,618
(+17,039 daily
increase)

QLD
11,087,433
(+12,897 daily
increase)

WA
6,453,317
(+7,911 daily
increase)

TAS
1,324,664
(+1,903 daily
increase)

SA
4,056,719
(+6,320 daily
increase)

ACT
1,533,019
(+1,808 daily
increase)

NT
583,786
(+523 daily
increase)

*Administration state breakdown indicates state in which a vaccine was administered

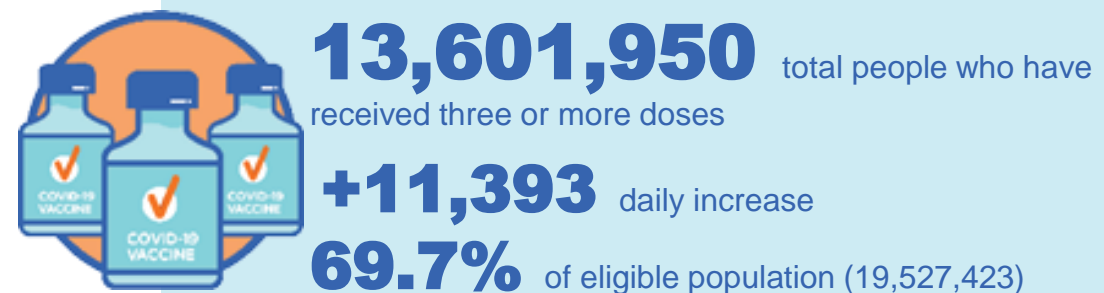
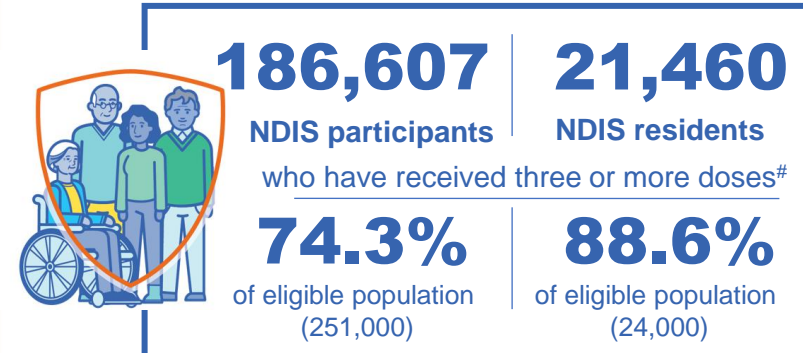
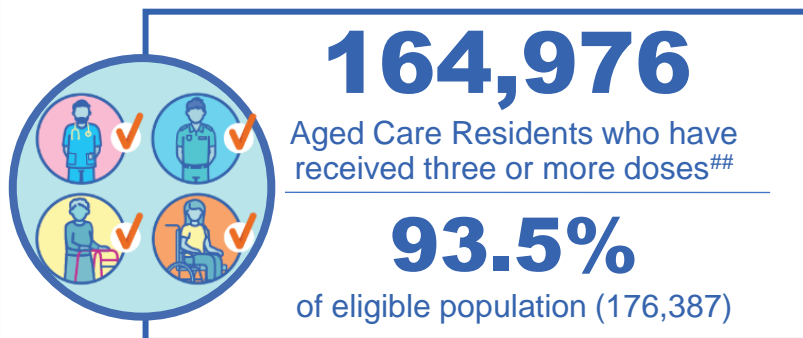
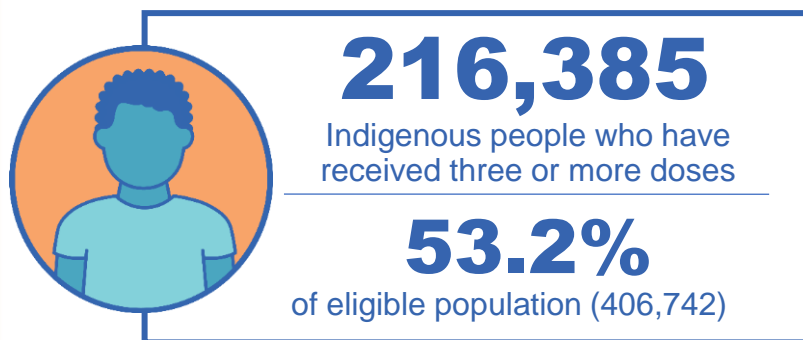
**Overall dose count includes instances of more than three doses per person in a small number of cases.

Source: Australian Immunisation Register

Booster Vaccinations

Australia's COVID-19
Vaccine Roadmap

Data as at:
18 May 2022



	Number of People	Daily Increase	% of Eligible
NSW	4,151,115	3,076	66.9%
VIC	3,634,912	2,731	71.9%
QLD	2,354,371	2,133	62.8%
WA	1,671,834	1,687	83.3%
SA	965,918	1,068	72.9%
TAS	310,926	252	72.2%
ACT	269,471	186	77.9%
NT	128,091	192	76.7%

*People may belong to multiple groups and could be represented in the above breakdowns multiple times.
NDIS participants data as at 17 May 2022. ## Aged Care Residents data as at 18 May 2022.

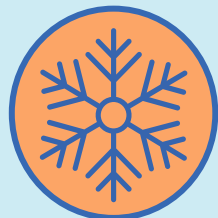
Source: Australian Immunisation Register

115,312 doses administered to persons
residing in other territories or with
missing residential information

Winter / Fourth Doses

Data as at:
15 May 2022
Updated weekly

Australia's COVID-19
Vaccine Roadmap



958,757 total people (16+) who have received four or more doses

+251,933 weekly increase

	Number of People 16+	Weekly Increase
ACT	22,334	4,740
NSW	316,549	79,396
NT	4,663	954
QLD	182,124	48,015
SA	75,433	21,857
TAS	26,891	7,334
VIC	239,316	61,581
WA	87,023	26,996

4,424 doses administered to persons
residing in other territories or with
missing residential information

Source: Australian Immunisation Register

Vaccinations by residential location

Australia's COVID-19 Vaccine Roadmap

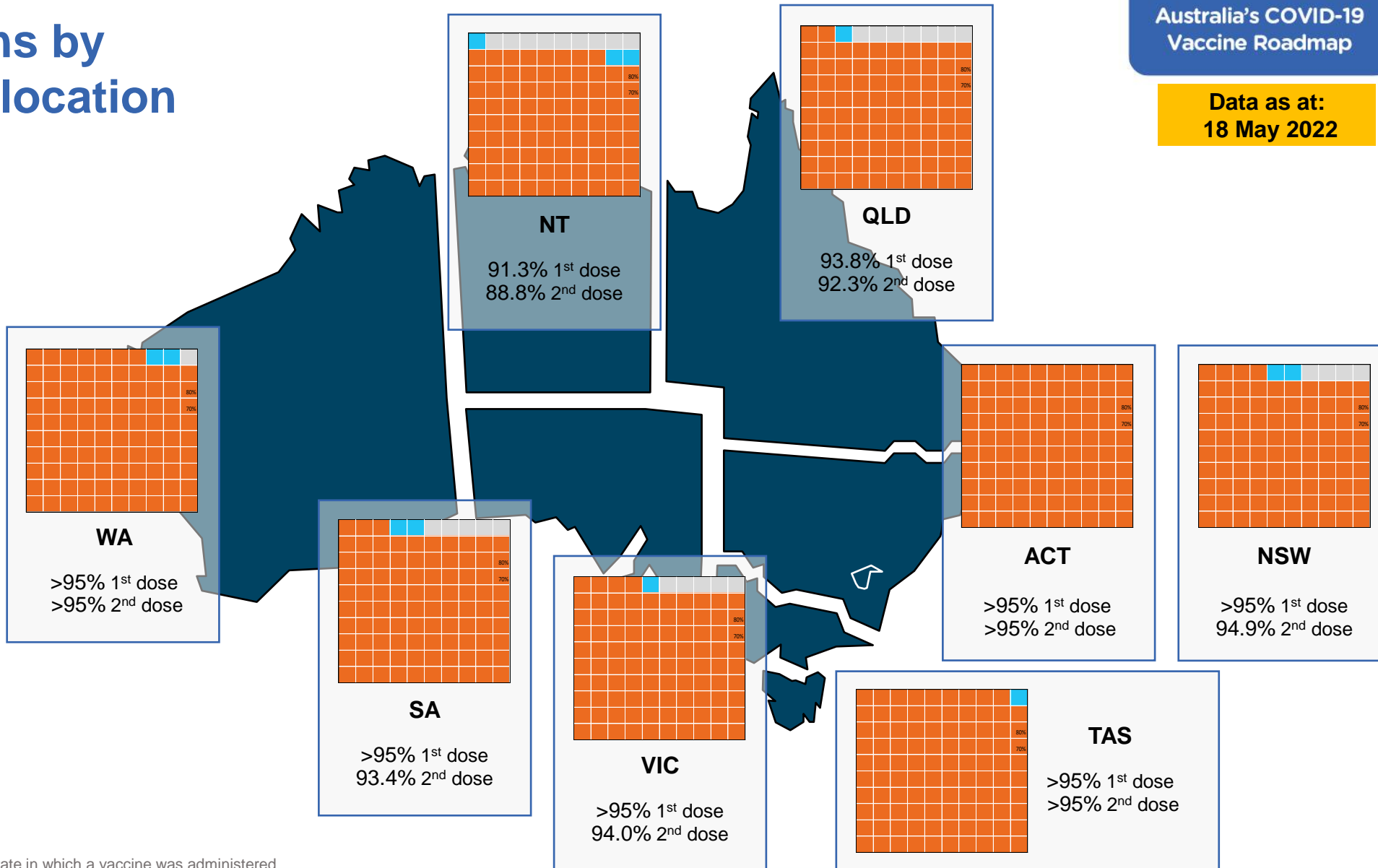
Data as at:
18 May 2022

First doses

Age	Today	4 weeks ago	8 weeks ago
16+	>95%	>95%	>95%
50+	>95%	>95%	>95%
70+	>95%	>95%	>95%

Fully vaccinated

Age	Today	4 weeks ago	8 weeks ago
16+	>95%	>95%	>95%
50+	>95%	>95%	>95%
70+	>95%	>95%	>95%



*Residential state may differ from the state in which a vaccine was administered

Commonwealth and Jurisdiction vaccine doses administered

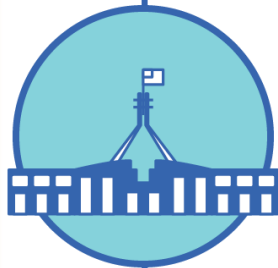
Data as at:
18 May 2022



58,623,989 total vaccine
doses administered nationally as at 18 May
+ 69,559 recorded in the last 24 hours



21,129,748
doses administered by state
and territory facilities
+ 7,614
recorded in the last 24 hours



37,494,241
doses administered by
commonwealth facilities
+ 61,945
recorded in the last 24 hours

36,206,638 total vaccine doses
administered in primary care settings
1,287,603 total vaccine doses
administered in aged care and disability
settings

NSW	Jurisdictions	Commonwealth
Cumulative	5,115,986	13,066,447
Daily increase	1,127	20,031

VIC	Jurisdictions	Commonwealth
Cumulative	6,086,006	9,316,612
Daily increase	1,871	15,168

QLD	Jurisdictions	Commonwealth
Cumulative	3,846,314	7,241,119
Daily increase	820	12,077

WA	Jurisdictions	Commonwealth
Cumulative	2,508,362	3,944,955
Daily increase	1,310	6,601

TAS	Jurisdictions	Commonwealth
Cumulative	622,928	701,736
Daily increase	276	1,627

SA	Jurisdictions	Commonwealth
Cumulative	1,818,339	2,238,380
Daily increase	1,311	5,009

ACT	Jurisdictions	Commonwealth
Cumulative	788,429	744,590
Daily increase	710	1,098

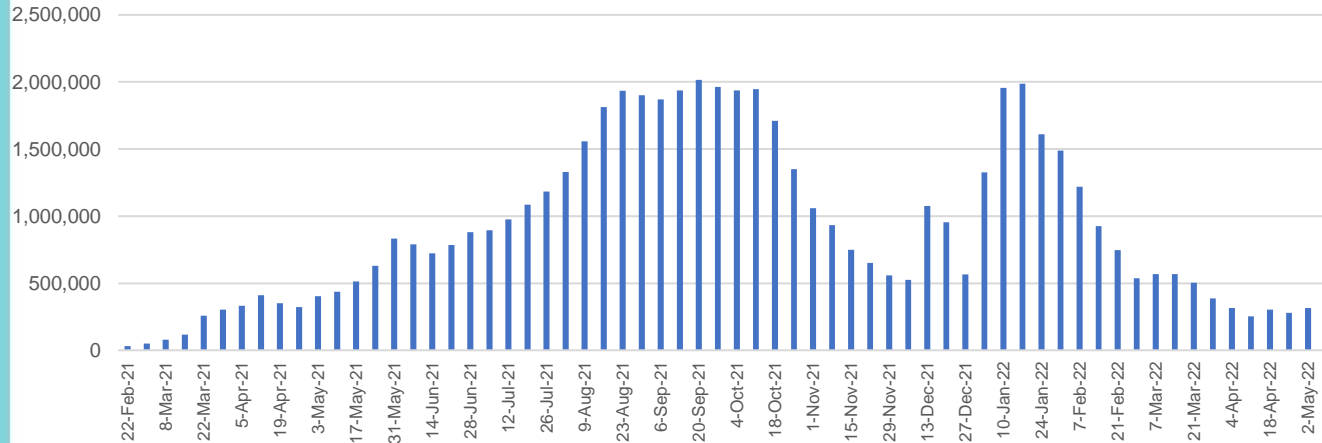
NT	Jurisdictions	Commonwealth
Cumulative	343,384	240,402
Daily increase	189	334

Vaccine milestone charts

Data as at:
18 May 2022

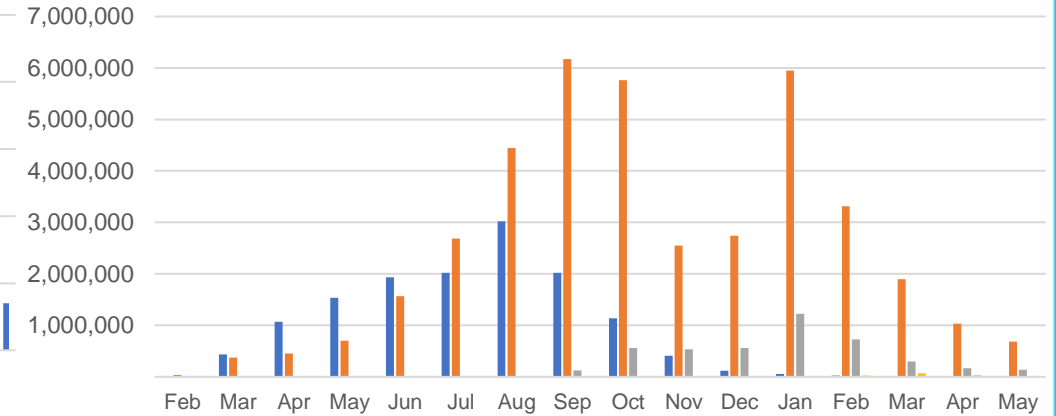
Australia's COVID-19
Vaccine Roadmap

Doses Administered by Week

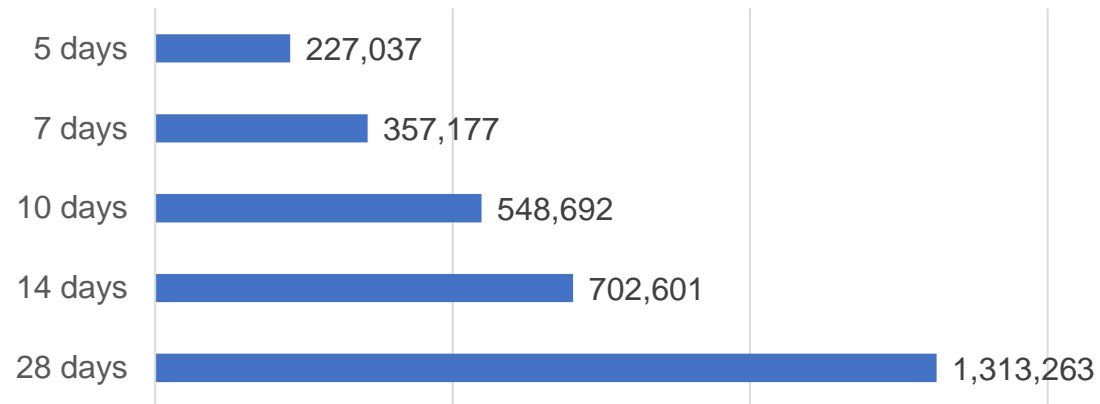


Doses by administration month and vaccine type

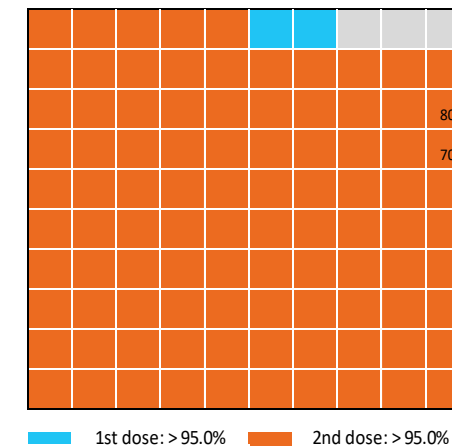
AZ - Vaxzevria Pfizer Moderna Novavax



Doses Reported



Eligible population percentage coverage



*Each square represents 1% of the national population.
Squares are filled as milestones are achieved.

*Sourced from the Australian Immunisation Register.

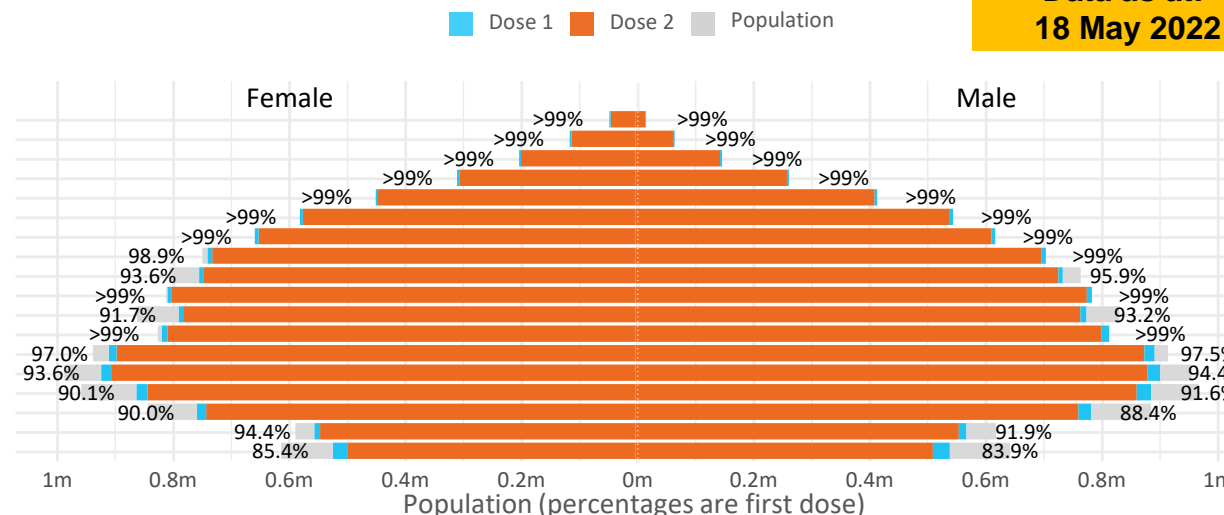
Data as at:
18 May 2022

Doses by age and sex

First and second doses by age and sex

	16+	50+	12-15	5-11
Dose 1	97.23% (20,049,383 doses / 20,619,959 people)	>99% (8,882,480 doses / 8,749,703 people)	84.69% (1,053,515 doses / 1,243,990 people)	52.74% (1,200,667 doses / 2,276,638 people)
Dose 2	95.62% (19,716,538 doses / 20,619,959 people)	>99% (8,775,973 doses / 8,749,703 people)	80.26% (998,475 doses / 1,243,990 people)	38.15% (868,594 doses / 2,276,638 people)

Age	Dose 1	Dose 2
95+	63,221 (>99%)	59,816 (>99%)
90-94	178,869 (>99%)	173,297 (>99%)
85-89	346,578 (>99%)	339,652 (>99%)
80-84	566,821 (>99%)	559,566 (>99%)
75-79	856,788 (>99%)	848,425 (>99%)
70-74	1,116,030 (>99%)	1,104,939 (>99%)
65-69	1,265,891 (>99%)	1,251,549 (>99%)
60-64	1,433,217 (>99%)	1,417,046 (98.6%)
55-59	1,475,703 (94.9%)	1,459,223 (93.8%)
50-54	1,579,362 (>99%)	1,562,460 (>99%)
45-49	1,551,425 (92.5%)	1,532,973 (91.4%)
40-44	1,619,742 (>99%)	1,595,776 (98.5%)
35-39	1,789,706 (97.5%)	1,757,805 (95.8%)
30-34	1,816,150 (94.4%)	1,774,660 (92.3%)
25-29	1,742,923 (91.4%)	1,695,570 (88.9%)
20-24	1,532,721 (89.5%)	1,493,412 (87.2%)
16-19	1,114,236 (93.2%)	1,090,369 (91.2%)
12-15	1,053,515 (84.7%)	998,475 (80.3%)

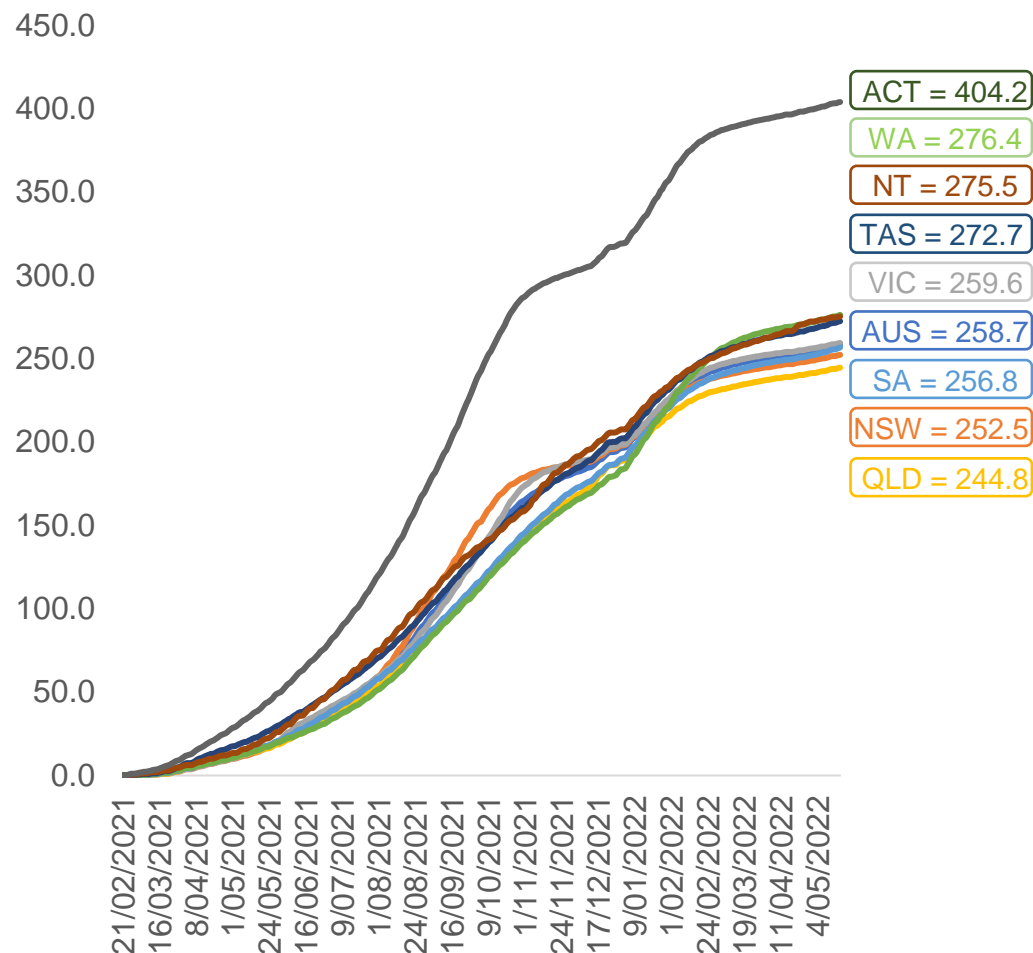


	AUS	ACT	NSW	NT	QLD	SA	TAS	VIC	WA
16 and over - dose 1	20,049,383	352,587	6,325,441	173,953	3,859,441	1,374,713	444,847	5,158,900	2,094,649
16 and over - dose 2	19,716,538	346,993	6,229,214	169,256	3,795,727	1,345,428	435,808	5,082,108	2,063,416
16 and over - population	20,619,959*	344,037	6,565,651	190,571	4,112,707	1,440,400	440,172	5,407,574	2,114,978
16 and over % with dose 1	97.23%	>99%	96.34%	91.28%	93.84%	95.44%	>99%	95.40%	>99%
16 and over % with dose 2	95.62%	>99%	94.88%	88.82%	92.29%	93.41%	>99%	93.98%	97.56%
5 to 11 - dose 1	1,200,667	31,919	358,277	13,242	208,497	84,181	28,667	326,591	141,506
5 to 11 - dose 2	868,594	26,708	263,570	8,282	145,673	61,190	22,769	237,716	98,237
5 to 11 - population	2,276,638	39,789	716,460	24,750	478,731	148,816	45,033	578,499	244,154
5 to 11 % with dose 1	52.74%	80.22%	50.01%	53.50%	43.55%	56.57%	63.66%	56.45%	57.96%
5 to 11 % with dose 2	38.15%	67.12%	36.79%	33.46%	30.43%	41.12%	50.56%	41.09%	40.24%
12 to 15 - dose 1	1,053,515	20,104	324,024	10,827	206,598	68,410	22,925	275,254	115,858
12 to 15 - dose 2	998,475	19,570	309,814	9,748	193,461	64,777	21,827	263,562	107,397
12 to 15 - population	1,243,990	19,693	390,330	13,060	270,146	82,747	26,308	308,611	132,869
12 to 15 % with dose 1	84.69%	>99%	83.01%	82.90%	76.48%	82.67%	87.14%	89.19%	87.20%
12 to 15 % with dose 2	80.26%	>99%	79.37%	74.64%	71.61%	78.28%	82.97%	85.40%	80.83%

*National population will not equal sum of listed jurisdictions due to a small number of people counted in national population residing in some 'other' territories. Sum of state doses will not add to national total as some records are unable to be geocoded to a State or Territory.
Doses sourced from Australian Immunisation Register, population from ABS ERP June 2020

Vaccinations by location

Cumulative total doses administered vs eligible state populations*

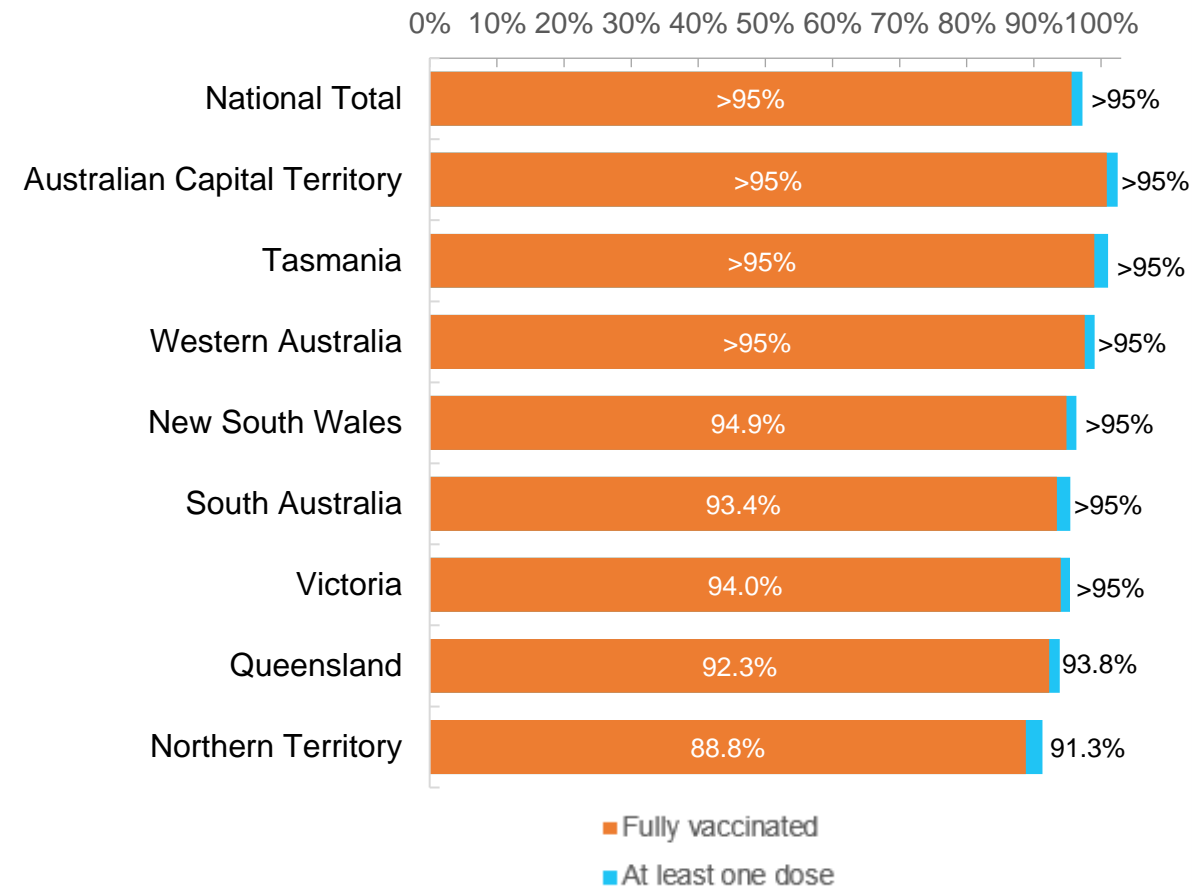


*Not an indication of percentage vaccinated, numbers will exceed 100 due to multiple doses required per person of the population. All doses are included for those aged 12 and above, and are based on vaccination provider location.

Data as at:
18 May 2022

Australia's COVID-19
Vaccine Roadmap

First and Second Doses by residential location



Aboriginal and Torres Strait Islander peoples

Number of people vaccinated

Data as at:
17 May 2022
Updated weekly

Australia's COVID-19
Vaccine Roadmap



441,580

people over the age of 16
have had at least one dose

84.9%

of people over the age of 16
have had at least one dose



422,736

people over the age of 16
are fully vaccinated

81.2%

of people over the age of 16 are
fully vaccinated



People aged 12 – 15 years

48,427

42,621

68.4%

At least one dose

60.2%

Fully vaccinated

178 Aboriginal community controlled health services (ACCHS)

0#

50

27

44

12

3

21

21

ACT

NSW

NT

QLD

SA

TAS

VIC

WA

Medicare Address State ^{##}	Individuals Dose 1	Individuals Dose 1 %	Individuals Dose 2	Individuals Dose 2 %
Australian Capital Territory	4,799	91.3%	4,679	89.1%
New South Wales	135,796	87.3%	132,716	85.3%
Northern Territory	41,509	89.6%	39,430	85.1%
Queensland	116,047	81.7%	110,581	77.9%
South Australia	19,990	80.4%	18,582	74.7%
Tasmania	13,916	88.8%	13,509	86.2%
Victoria	35,635	90.4%	34,857	88.4%
Western Australia	53,672	86.6%	49,818	80.4%
Unknown/Other Territories	20,216	69.3%	18,564	63.6%
Totals	441,580	84.9%	422,736	81.2%

Source: Australian Immunisation Register

*Identifying as Aboriginal and Torres Strait Islander is optional and the estimated population may be under reported.

**Includes all Aboriginal and Torres Strait Islander peoples who have received a vaccination, not limited to those administered in an ACCHS setting

#ACCHS in the ACT are currently operating as a Commonwealth Vaccine Clinics so not included to avoid double counting

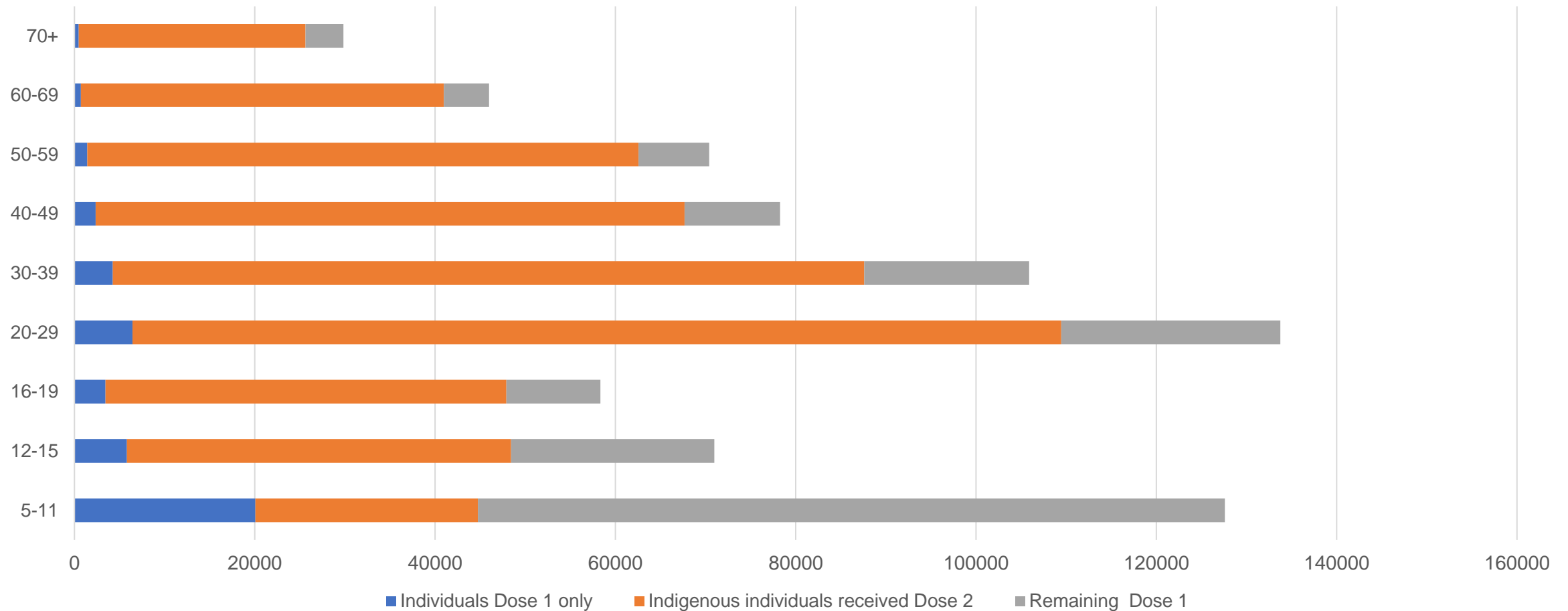
##The above table includes all identified Aboriginal and Torres Strait Islander people who are aged 16 and above by their state of residence.

Aboriginal and Torres Strait Islander peoples

Number of people vaccinated by age

Data as at:
17 May 2022
Updated weekly

Australia's COVID-19
Vaccine Roadmap



Source: Australian Immunisation Register

Commonwealth primary care

Data as at:
18 May 2022

Australia's COVID-19
Vaccine Roadmap



Primary care vaccine administration sites

5,729	128	178	3,597
GPs	CVCs	ACCHS	Pharmacies



36,206,638 total vaccine doses administered
primary care settings as at 18 May
+ 60,468 recorded in the last 24 hours

Primary care vaccinations by provider type

	Doses administered	Daily increase	7 day increase
General Practice* includes other Commonwealth	29,061,614	44,405	222,464
Pharmacy	7,145,024	16,063	87,618

NSW
12,505,496
(+19,481 daily increase)

VIC
8,994,215
(+14,534 daily increase)

QLD
6,961,910
(+12,034 daily increase)

WA
3,808,726
(+6,465 daily increase)

TAS
680,522
(+1,593 daily increase)

SA
2,158,102
(+5,108 daily increase)

ACT
571,833
(+1,030 daily increase)

NT
216,152
(+281 daily increase)

309,682

doses administered to persons
residing in other territories or with
missing residential information

*General practice includes Commonwealth Vaccination Clinics, Aboriginal Community Health Centres, Royal Flying Doctor Service and other Commonwealth vaccination facilities

Source: Australian Immunisation Register

Data as at:
18 May 2022

Commonwealth aged care and disability doses administered



1,287,603 (+ 1,477 last 24 hours)

Total vaccine doses administered in aged care and disability facilities as at 18 May

Number of doses administered as part of the Commonwealth aged and disability care rollout

NSW
563,037
(+444 daily increase)

VIC
240,298
(+478 daily increase)

QLD
204,677
(+246 daily increase)

WA
109,459
(+159 daily increase)

TAS
23,392
(+31 daily increase)

SA
84,555
(+14 daily increase)

ACT
17,396
(+26 daily increase)

NT
7,651
(<10 daily increase)

37,138

doses administered to persons
residing in other territories or with
missing residential information

*Sourced from the Australian Immunisation Register. Includes all persons vaccinated at participating residential aged care, disability and related industry settings.

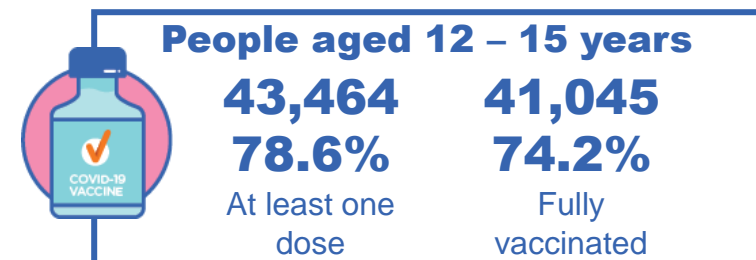
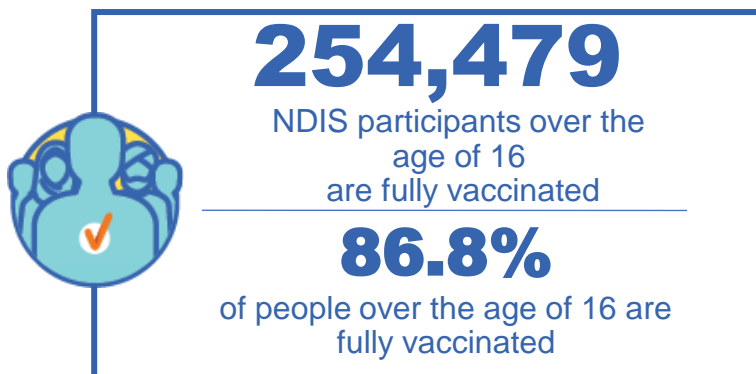
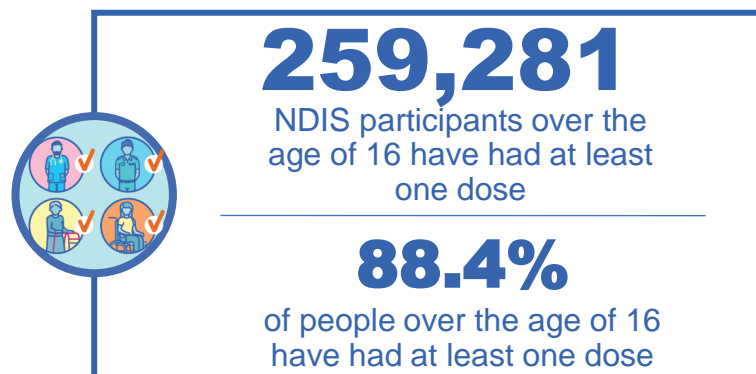
**State level breakdown indicates the residential location and may not align to the state in which the vaccination occurred.

Source: Australian Immunisation Register

National Disability Insurance Scheme (NDIS) reported vaccinations

Data as at:
12 May 2022
Updated weekly

Australia's COVID-19
Vaccine Roadmap



NDIS participant vaccinations

	People aged 16+ with at least one dose	People aged 16+ fully vaccinated	% People aged 16+ with at least one dose	% People aged 16+ fully vaccinated
ACT	4,897	4,832	90.3%	89.1%
NSW	79,544	78,246	88.7%	87.2%
NT	2,243	2,177	78.6%	76.3%
QLD	51,199	50,222	87.0%	85.4%
SA	21,182	20,663	86.3%	84.2%
TAS	6,496	6,344	88.4%	86.3%
VIC	68,955	67,767	89.5%	88.0%
WA	24,765	24,228	90.0%	88.0%
National	259,281	254,479	88.4%	86.8%

Source: Linkage between National Disability Insurance Agency data and the Australian Immunisation Register. Total NDIS participant numbers as at 28 February. Australian Immunisation Register data as at 11 May. Includes all participants regardless of residence type.

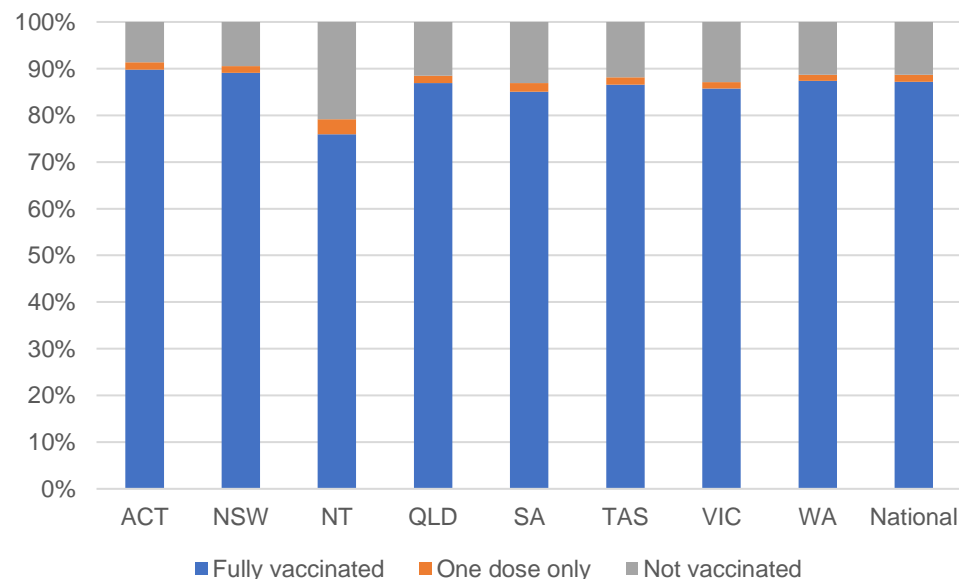
National Disability Insurance Scheme (NDIS) reported vaccinations

Data as at:
12 May 2022
Updated weekly

Australia's COVID-19
Vaccine Roadmap

NATIONAL	Total people with at least one dose	People fully vaccinated	Total number of individuals in cohort	% People with at least one dose	% People fully vaccinated
NDIS participants living in disability accommodation	20,794	20,451	23,352	89.0%	87.6%

NDIS participants in disability and aged care accommodation



Source: Linkage between National Disability Insurance Agency data and the Australian Immunisation Register. Includes participants residing in disability accommodation only.

Source: Total NDIS participant numbers as at 28 February. Participant data as at 11 May. Australian Immunisation Register data as at 11 May. Worker data as at 12 May.

NDIS workforce vaccinations

	NDIS workers with at least one dose	NDIS workers fully vaccinated	% NDIS workers with at least one dose	% NDIS workers fully vaccinated
NSW	124,560	119,711	98.2%	94.4%
VIC	116,347	112,949	98.3%	95.4%
QLD	69,914	69,030	97.6%	96.4%
WA	34,415	32,834	98.8%	94.2%
SA	35,573	33,272	98.5%	92.1%
TAS	10,857	10,622	99.1%	96.9%
ACT	11,976	11,953	98.8%	98.6%
NT	3,723	3,579	99.6%	95.8%
TOTAL	407,365	393,950	98.3%	95.0%

Source: the NDIS Commission has established a requirement for registered NDIS providers who provide intensive disability support services to report on the vaccination status of workers they employ, or otherwise engage, to deliver NDIS-funded supports and services, and who are required to be vaccinated in accordance with in-force state and territory public health orders. The statistics reflect data reported to the NDIS Commission by registered NDIS providers and should be considered indicative and subject to change

Note: Some registered NDIS providers are yet to report on the vaccination status of their workforce. The NDIS Commission is working with those providers around reporting requirements.

Remaining workers not included include those exempt from vaccination requirements, workers whose vaccination status is not yet verified by the provider (such as workers on leave) and provider reporting anomalies.

Residential aged care vaccination rollout

Residential aged care facilities status

176,228

People fully vaccinated

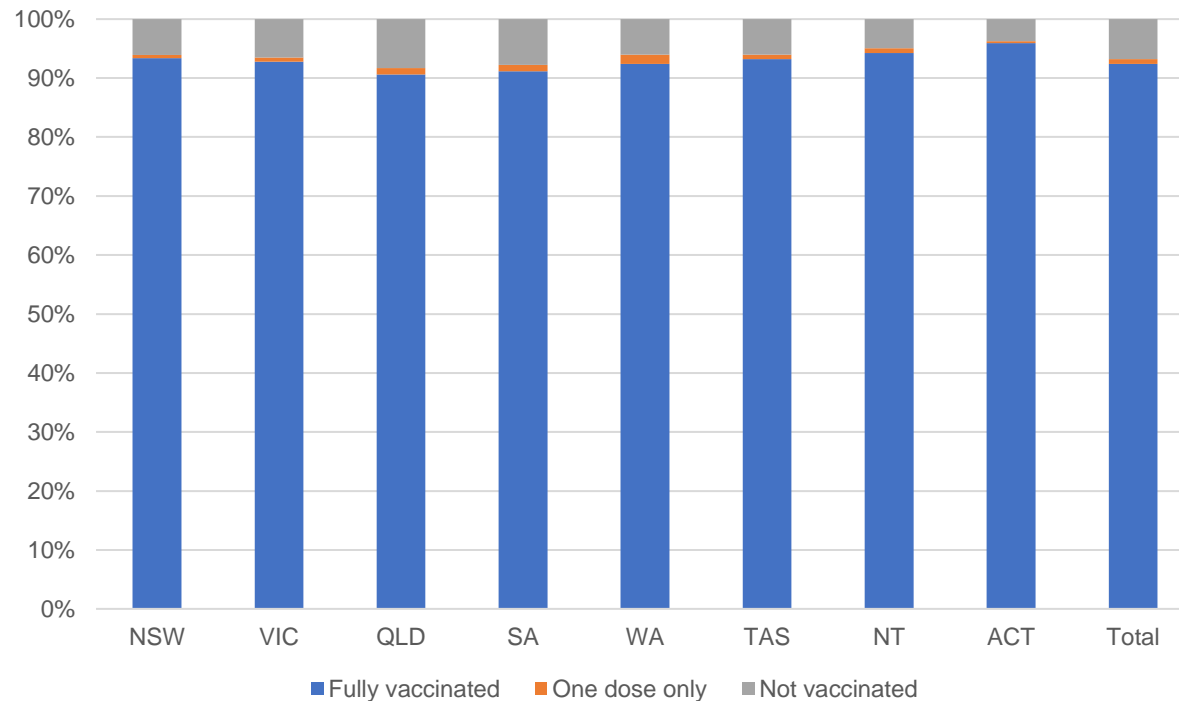
177,805

People with at least one dose

Australia's COVID-19 Vaccine Roadmap

Data as at:
12 May 2022
Updated weekly

Aged care resident vaccinations



Aged care worker vaccinations

Jurisdictions	Total workers with at least one dose	Workers fully vaccinated	% Workers with at least one dose	% Workers fully vaccinated
NSW	78,020	78,016	99.7%	99.7%
VIC	68,347	68,346	98.3%	98.3%
QLD	47,478	47,473	99.0%	99.0%
SA	26,895	26,879	98.5%	98.4%
WA	24,144	24,140	100.0%	99.9%
TAS	7,474	7,473	100.0%	100.0%
NT	898	898	100.0%	100.0%
ACT	2,854	2,854	96.7%	96.7%
Total	256,110	256,079	99.0%	99.0%

Source: My Aged Care Portal vaccination progress

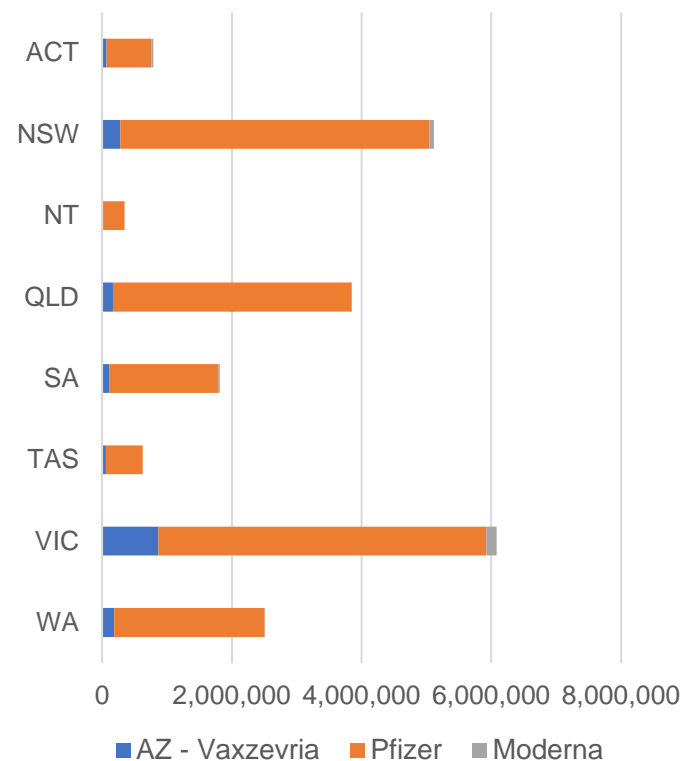
*Status updates are provided by facilities at least once per week. Reporting is updated Monday to Friday to encompass different facility updates being made on different days.

Data is sourced directly from Aged Care Service Providers and is not drawn or closely aligned with data from AIR due to inconsistencies and potential lags in uploading of records.

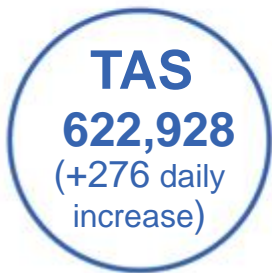
Data as at:
18 May 2022

Jurisdiction administered

Total vaccine doses administered in State and Territory clinics as at 18 May



21,129,748 total vaccine doses administered
in State and Territory clinics as at 18 May
+ 7,614 recorded in the last 24 hours
+ 41,167 recorded in the last 7 days

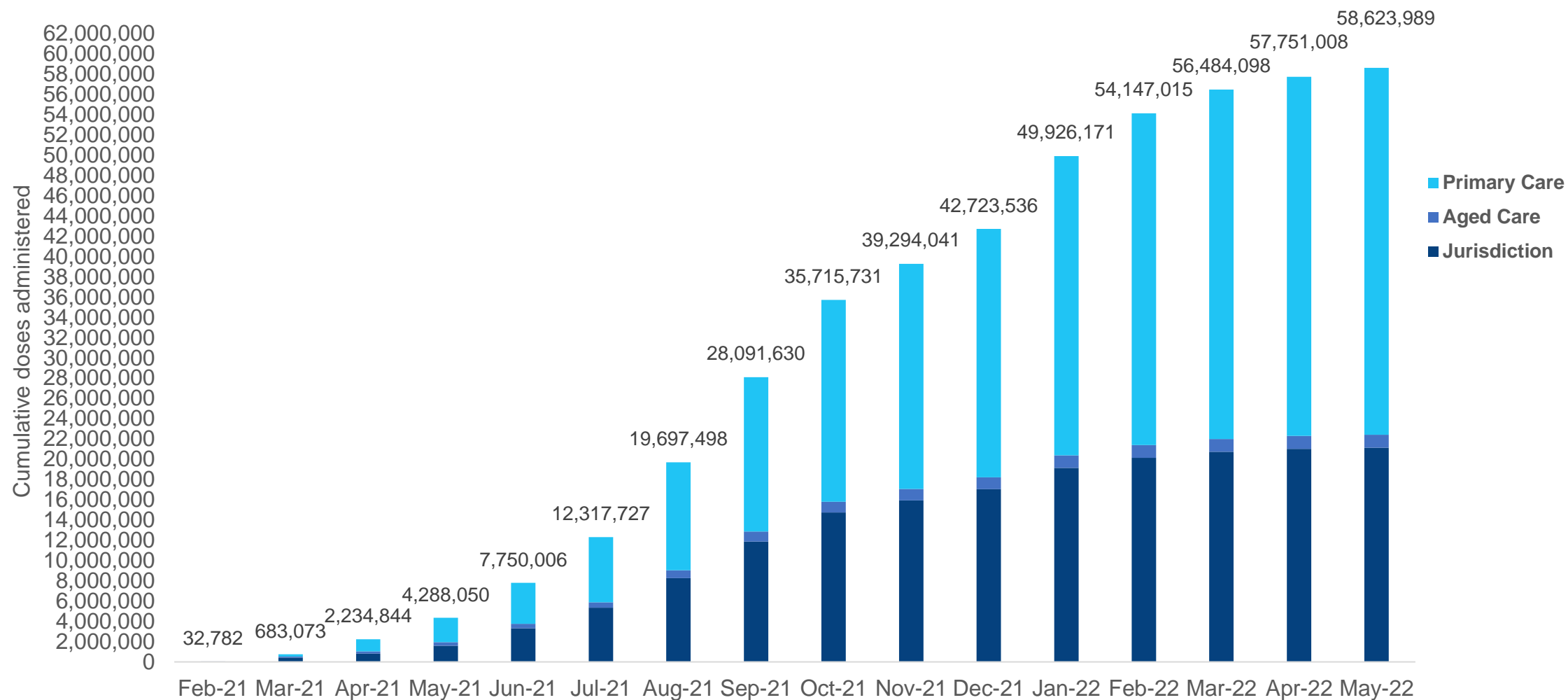


*Sourced from the Australian Immunisation Register. Numbers are calculated as difference in daily cumulative reported numbers to allow for historical corrections.

Source: Australian Immunisation Register

Cumulative doses administered by channel

Data as at:
18 May 2022



Source: Australian Immunisation Register

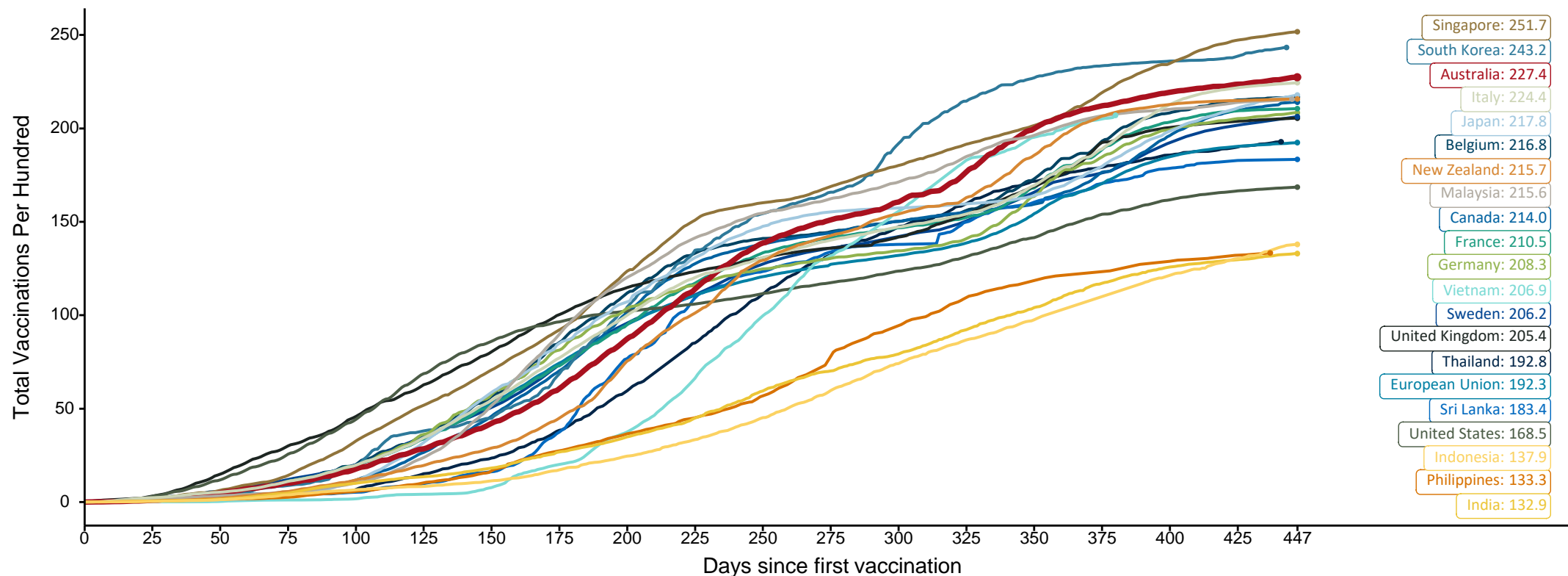
Doses at equivalent stages of rollout (Day 447)

Data as at:
15 May 2022
Updated weekly

Australia's COVID-19
Vaccine Roadmap

The x-axis is truncated at the length of Australia's vaccination program. Countries with intermittent reporting have had their doses per 100 imputed to Australia's current stage of rollout. Israel excluded as it is beyond scale of the graph

Cumulative doses administered (15 May): **58,427,221**



Note: From 11 January 2022, data for Australia includes all doses administered to people 5 and over. Prior to 11 January, data was for 12 and over.

Source: Department of Health (Australia), Our World in Data (international)

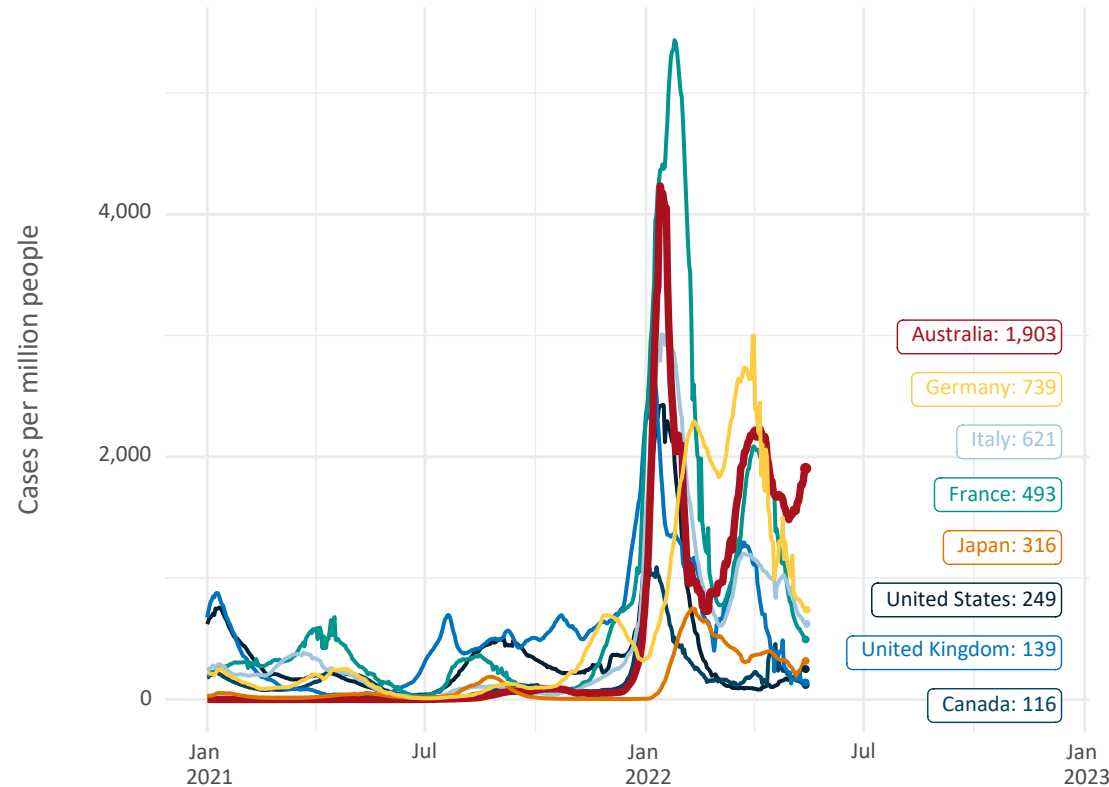
Latest data: 15 May

International data – COVID-19

Australia's COVID-19
Vaccine Roadmap

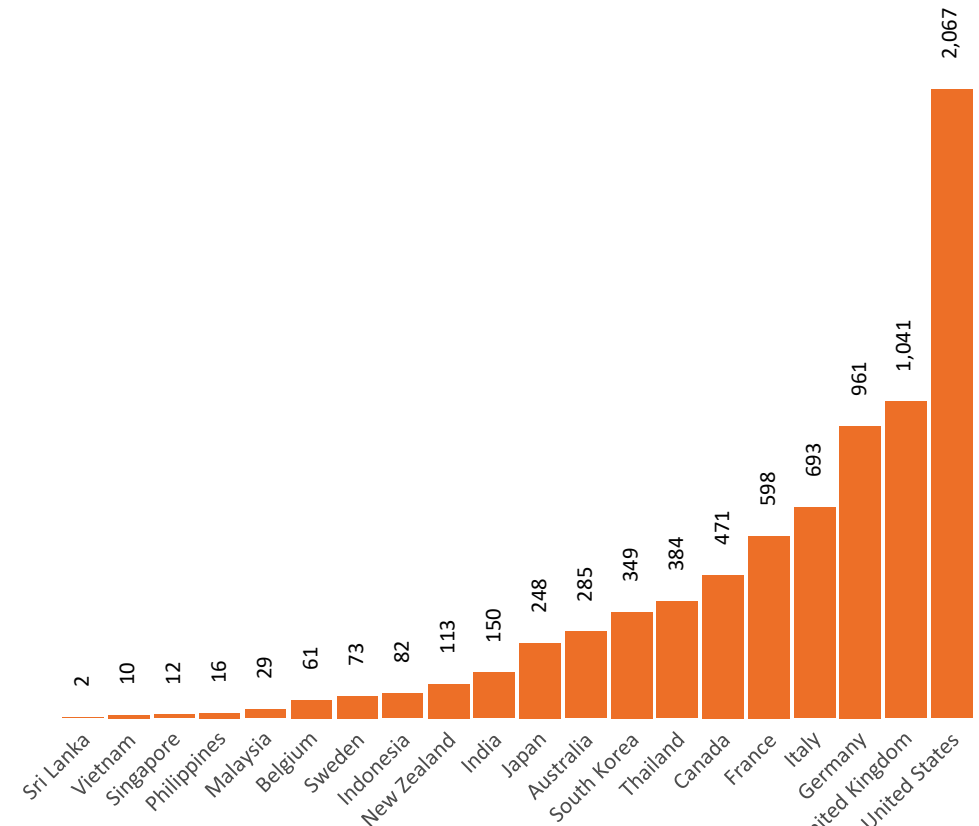
Data as at:
15 May 2022
Updated weekly

New daily cases per million since 2021, Australia and G7 countries
Smoothed - 7 day average



Source: OWID
Data downloaded: 16 May 2022 11:47
Latest data: 15 May 2022

COVID-19 deaths in past 7 days - Australia and select countries



Source: OWID
Data downloaded: 16 May 2022 11:47
Latest data: 15 May 2022

Pandemic Response Payments

Australia's COVID-19
Vaccine Roadmap

Data as at midnight:
15 May 2022 (updated weekly)

2.38 million

People have received at least one
COVID Disaster Payment
(including ISP200)

8.04 million

Claims granted across
three different payments

\$14.48 billion

Paid Out as at 15 May 2022

Claims Received Digitally

93%

Three payments available:

COVID Disaster Payment

assisting during a lockdown event
in a Commonwealth hotspot.

Income Support Payment \$200

for income support recipients who
lost at least 8 hours of work.

Pandemic Leave Disaster

for those who have to self-isolate,
quarantine or care.

For more information visit:

www.servicesaustralia.gov.au



COVID Disaster Payment: 5.89 million claims received - 2.19 million individuals paid a total of \$12.59 billion.

\$200 Income Support Payment: 353,000 claims received - 183,000 individuals paid a total of \$268.92 million.

Pandemic Leave Disaster Payment: 2.31 million claims received - 1.38 million individuals paid a total of \$1.61 billion.

COVID-19 DISASTER PAYMENTS

