



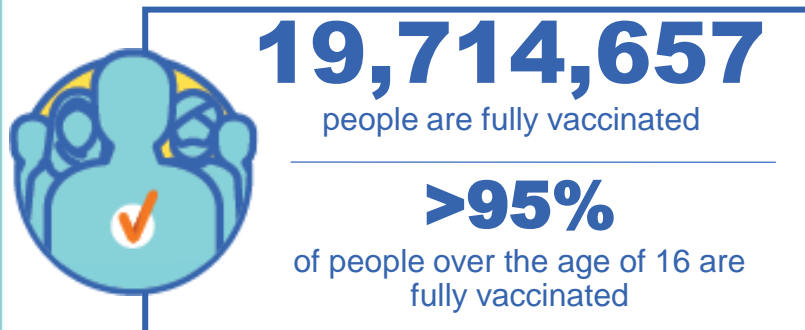
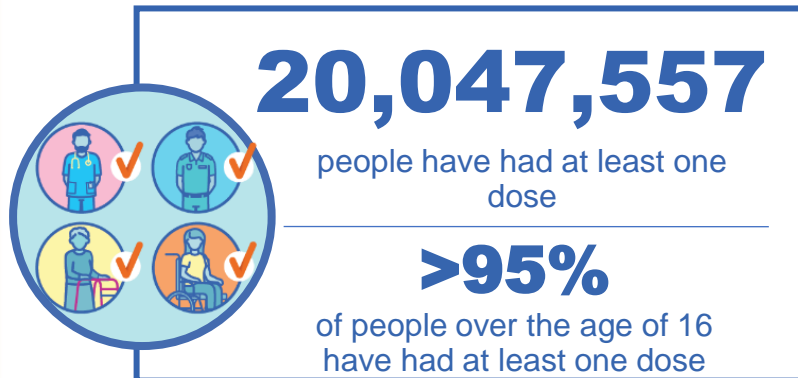
**Australian Government**  
**Operation COVID Shield**

# COVID-19 Vaccine Roll-out

18 May 2022

Data as at:  
17 May 2022

## Total vaccine doses



**58,554,430** total vaccine  
doses administered nationally as at 17 May

**+66,565** recorded in the last 24 hours

**NSW**  
**18,161,275**  
(+19,803 daily  
increase)

**VIC**  
**15,385,579**  
(+16,837 daily  
increase)

**QLD**  
**11,074,536**  
(+13,089 daily  
increase)

**WA**  
**6,445,406**  
(+7,572 daily  
increase)

**TAS**  
**1,322,761**  
(+1,801 daily  
increase)

**SA**  
**4,050,399**  
(+5,170 daily  
increase)

**ACT**  
**1,531,211**  
(+1,804 daily  
increase)

**NT**  
**583,263**  
(+489 daily  
increase)

\*Administration state breakdown indicates state in which a vaccine was administered

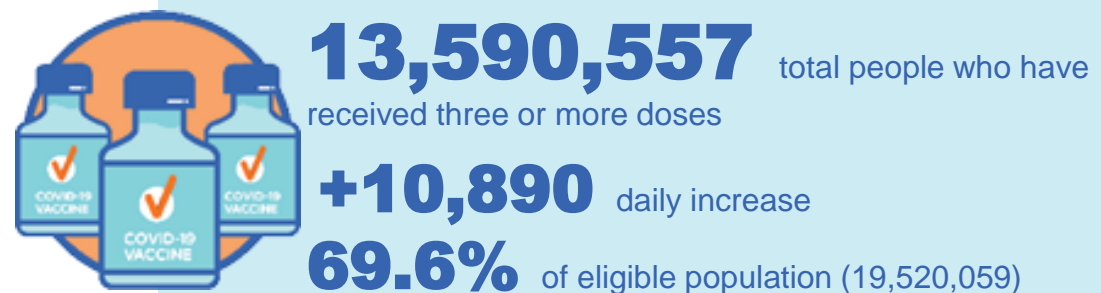
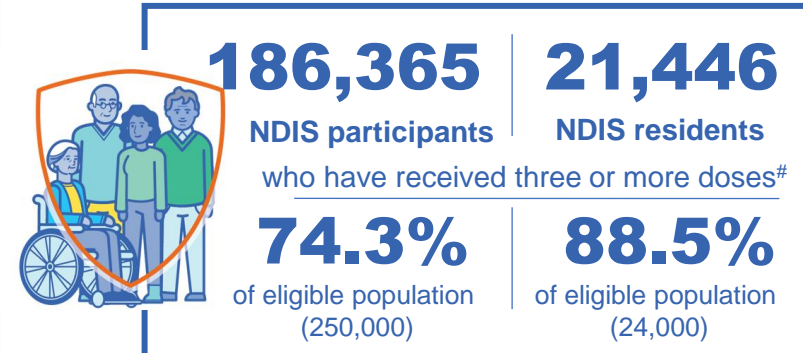
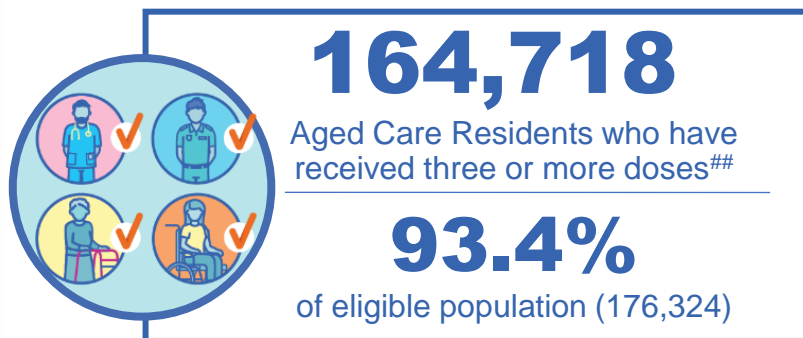
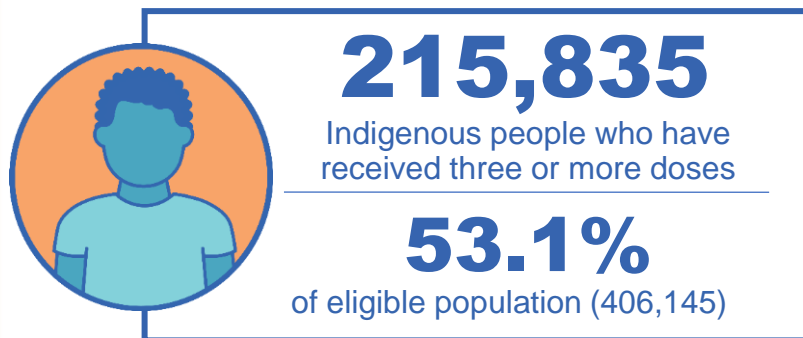
\*\*Overall dose count includes instances of more than three doses per person in a small number of cases.

Source: Australian Immunisation Register

# Booster Vaccinations

Australia's COVID-19  
Vaccine Roadmap

Data as at:  
17 May 2022



	Number of People	Daily Increase	% of Eligible
NSW	4,148,039	2,914	66.9%
VIC	3,632,181	2,366	71.8%
QLD	2,352,238	2,051	62.8%
WA	1,670,147	1,736	83.3%
SA	964,850	974	72.9%
TAS	310,674	363	72.2%
ACT	269,285	165	77.9%
NT	127,899	203	76.7%

\*People may belong to multiple groups and could be represented in the above breakdowns multiple times.  
# NDIS participants data as at 14 May 2022. ## Aged Care Residents data as at 17 May 2022.

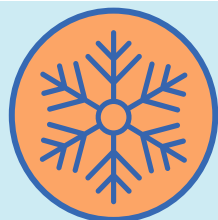
Source: Australian Immunisation Register

**115,244** doses administered to persons  
residing in other territories or with  
missing residential information

# Winter / Fourth Doses

Data as at:  
15 May 2022  
Updated weekly

Australia's COVID-19  
Vaccine Roadmap



**958,757** total people (16+) who have received four or more doses

**+251,933** weekly increase

	Number of People 16+	Weekly Increase
ACT	22,334	4,740
NSW	316,549	79,396
NT	4,663	954
QLD	182,124	48,015
SA	75,433	21,857
TAS	26,891	7,334
VIC	239,316	61,581
WA	87,023	26,996

**4,424** doses administered to persons  
residing in other territories or with  
missing residential information

Source: Australian Immunisation Register

# Vaccinations by residential location

Australia's COVID-19 Vaccine Roadmap

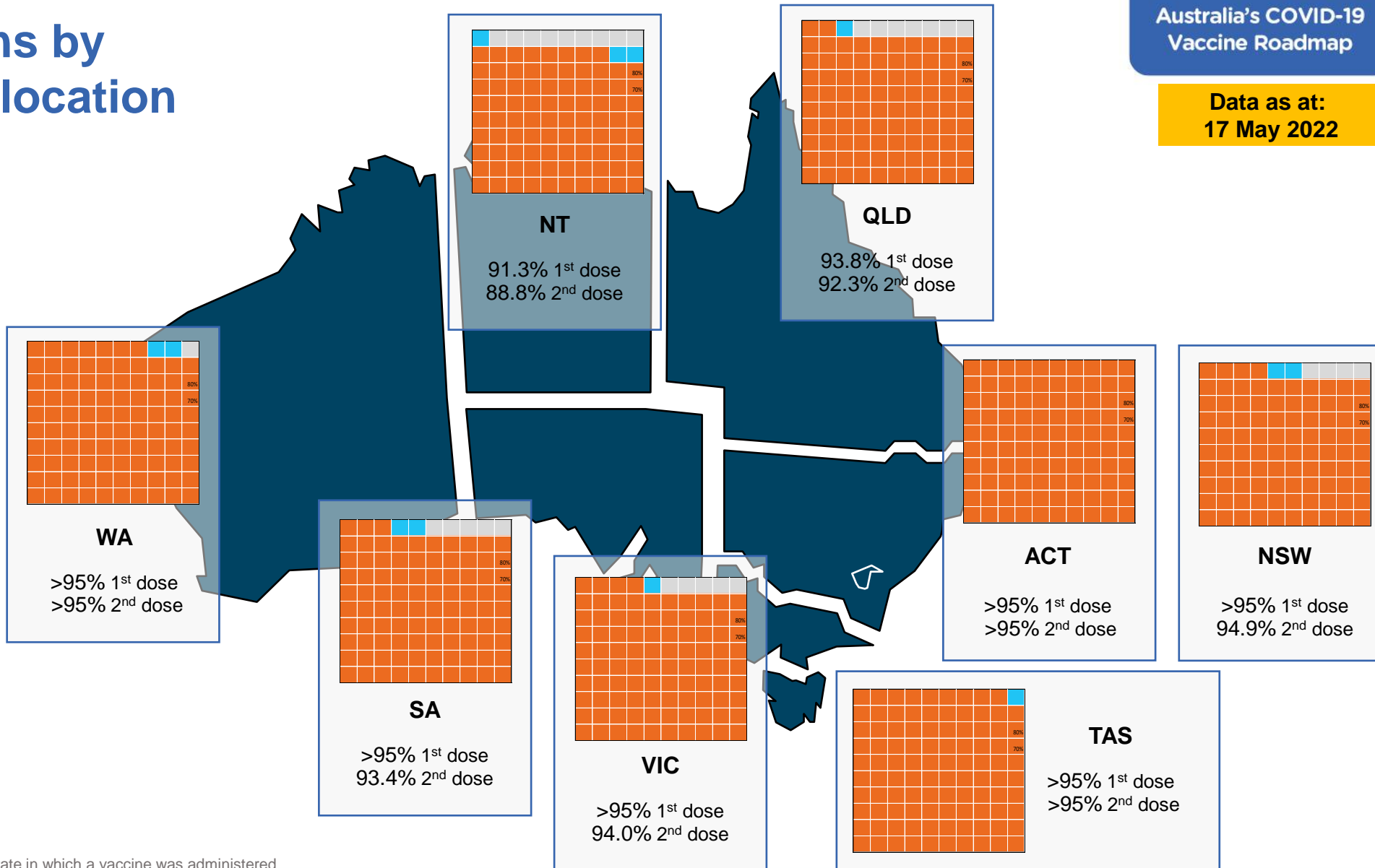
Data as at:  
17 May 2022

## First doses

Age	Today	4 weeks ago	8 weeks ago
16+	>95%	>95%	>95%
50+	>95%	>95%	>95%
70+	>95%	>95%	>95%

## Fully vaccinated

Age	Today	4 weeks ago	8 weeks ago
16+	>95%	>95%	>95%
50+	>95%	>95%	>95%
70+	>95%	>95%	>95%



\*Residential state may differ from the state in which a vaccine was administered

# Commonwealth and Jurisdiction vaccine doses administered

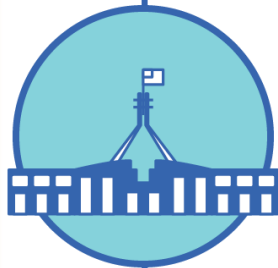
Data as at:  
17 May 2022



**58,554,430** total vaccine  
doses administered nationally as at 17 May  
**+ 66,565** recorded in the last 24 hours



**21,122,134**  
doses administered by state  
and territory facilities  
**+ 5,767**  
recorded in the last 24 hours



**37,432,296**  
doses administered by  
commonwealth facilities  
**+ 60,798**  
recorded in the last 24 hours

**36,146,170** total vaccine doses  
administered in primary care settings  
**1,286,126** total vaccine doses  
administered in aged care and disability  
settings

NSW	Jurisdictions	Commonwealth
Cumulative	5,114,859	13,046,416
Daily increase	226	19,577

VIC	Jurisdictions	Commonwealth
Cumulative	6,084,135	9,301,444
Daily increase	1,886	14,951

QLD	Jurisdictions	Commonwealth
Cumulative	3,845,494	7,229,042
Daily increase	709	12,380

WA	Jurisdictions	Commonwealth
Cumulative	2,507,052	3,938,354
Daily increase	944	6,628

TAS	Jurisdictions	Commonwealth
Cumulative	622,652	700,109
Daily increase	266	1,535

SA	Jurisdictions	Commonwealth
Cumulative	1,817,028	2,233,371
Daily increase	809	4,361

ACT	Jurisdictions	Commonwealth
Cumulative	787,719	743,492
Daily increase	738	1,066

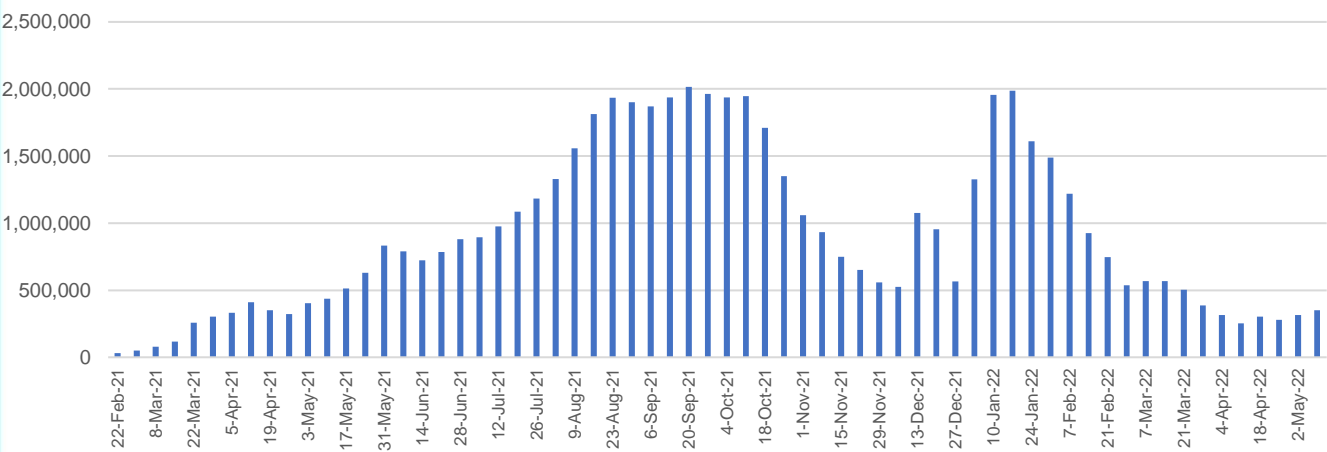
NT	Jurisdictions	Commonwealth
Cumulative	343,195	240,068
Daily increase	189	300

# Vaccine milestone charts

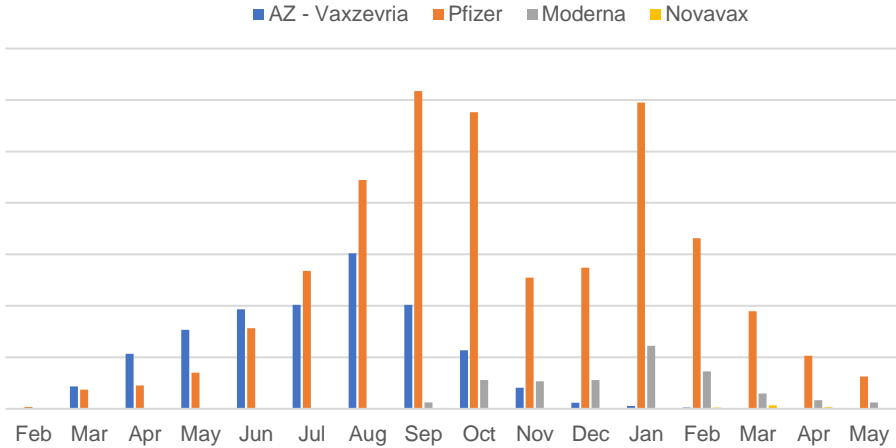
Data as at:  
17 May 2022

Australia's COVID-19  
Vaccine Roadmap

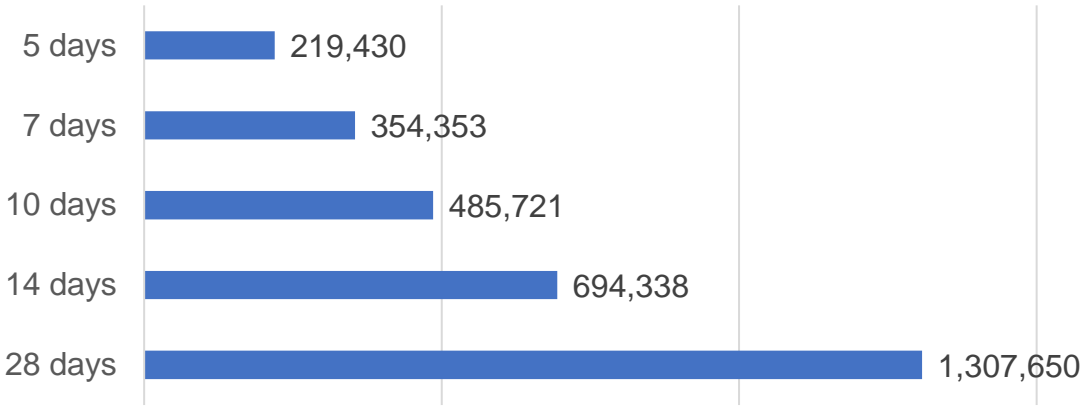
Doses Administered by Week



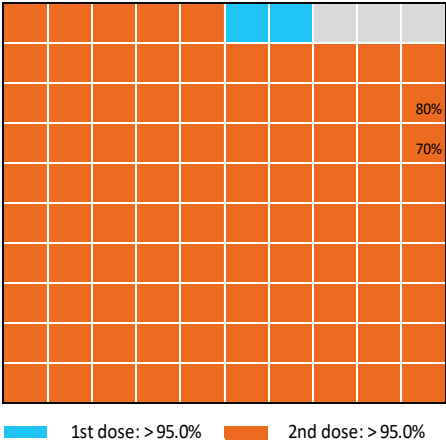
Doses by administration month and vaccine type



Doses Reported



Eligible population percentage coverage



\*Each square represents 1% of the national population.  
Squares are filled as milestones are achieved.

\*Sourced from the Australian Immunisation Register.

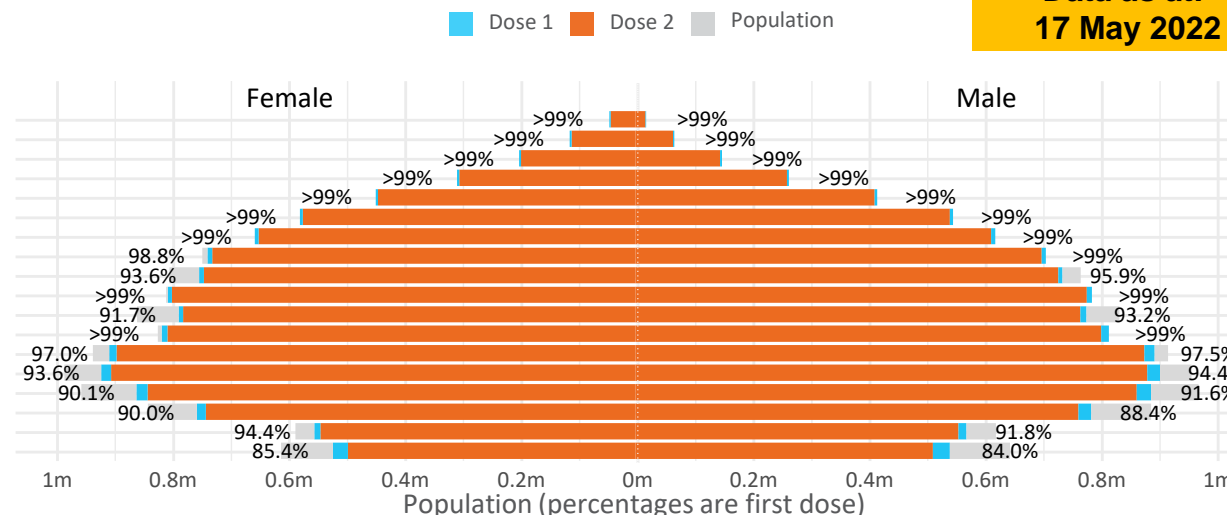
# Doses by age and sex

First and second doses by age and sex

	16+	50+	12-15	5-11
Dose 1	97.22% (20,047,557 doses / 20,619,959 people)	>99% (8,881,251 doses / 8,749,703 people)	84.70% (1,053,601 doses / 1,243,990 people)	52.75% (1,200,870 doses / 2,276,638 people)
Dose 2	95.61% (19,714,657 doses / 20,619,959 people)	>99% (8,774,725 doses / 8,749,703 people)	80.27% (998,590 doses / 1,243,990 people)	38.10% (867,460 doses / 2,276,638 people)

Data as at:  
17 May 2022

Age	Dose 1	Dose 2
95+	63,155 (>99%)	59,746 (>99%)
90-94	178,791 (>99%)	173,219 (>99%)
85-89	346,453 (>99%)	339,515 (>99%)
80-84	566,696 (>99%)	559,442 (>99%)
75-79	856,564 (>99%)	848,194 (>99%)
70-74	1,115,923 (>99%)	1,104,842 (>99%)
65-69	1,265,754 (>99%)	1,251,423 (>99%)
60-64	1,433,109 (>99%)	1,416,934 (98.6%)
55-59	1,475,640 (94.9%)	1,459,159 (93.8%)
50-54	1,579,166 (>99%)	1,562,251 (>99%)
45-49	1,551,458 (92.5%)	1,532,991 (91.4%)
40-44	1,619,591 (>99%)	1,595,615 (98.5%)
35-39	1,789,593 (97.5%)	1,757,681 (95.8%)
30-34	1,815,952 (94.4%)	1,774,464 (92.2%)
25-29	1,742,920 (91.4%)	1,695,553 (88.9%)
20-24	1,532,913 (89.5%)	1,493,619 (87.2%)
16-19	1,113,879 (93.2%)	1,090,009 (91.2%)
12-15	1,053,601 (84.7%)	998,590 (80.3%)



	AUS	ACT	NSW	NT	QLD	SA	TAS	VIC	WA
16 and over - dose 1	20,047,557	352,559	6,324,949	173,952	3,858,888	1,374,528	444,817	5,158,425	2,094,375
16 and over - dose 2	19,714,657	346,983	6,228,707	169,252	3,795,162	1,345,202	435,758	5,081,675	2,063,125
16 and over - population	20,619,959*	344,037	6,565,651	190,571	4,112,707	1,440,400	440,172	5,407,574	2,114,978
16 and over % with dose 1	97.22%	>99%	96.33%	91.28%	93.83%	95.43%	>99%	95.39%	>99%
16 and over % with dose 2	95.61%	>99%	94.87%	88.81%	92.28%	93.39%	99.00%	93.97%	97.55%
5 to 11 - dose 1	1,200,870	31,917	358,286	13,233	208,574	84,200	28,670	326,637	141,535
5 to 11 - dose 2	867,460	26,654	263,133	8,252	145,524	61,158	22,756	237,454	98,076
5 to 11 - population	2,276,638	39,789	716,460	24,750	478,731	148,816	45,033	578,499	244,154
5 to 11 % with dose 1	52.75%	80.22%	50.01%	53.47%	43.57%	56.58%	63.66%	56.46%	57.97%
5 to 11 % with dose 2	38.10%	66.99%	36.73%	33.34%	30.40%	41.10%	50.53%	41.05%	40.17%
12 to 15 - dose 1	1,053,601	20,097	324,068	10,828	206,593	68,413	22,935	275,289	115,849
12 to 15 - dose 2	998,590	19,563	309,863	9,747	193,481	64,783	21,834	263,595	107,399
12 to 15 - population	1,243,990	19,693	390,330	13,060	270,146	82,747	26,308	308,611	132,869
12 to 15 % with dose 1	84.70%	>99%	83.02%	82.91%	76.47%	82.68%	87.18%	89.20%	87.19%
12 to 15 % with dose 2	80.27%	>99%	79.38%	74.63%	71.62%	78.29%	82.99%	85.41%	80.83%

\*National population will not equal sum of listed jurisdictions due to a small number of people counted in national population residing in some 'other' territories. Sum of state doses will not add to national total as some records are unable to be geocoded to a State or Territory.  
Doses sourced from Australian Immunisation Register, population from ABS ERP June 2020

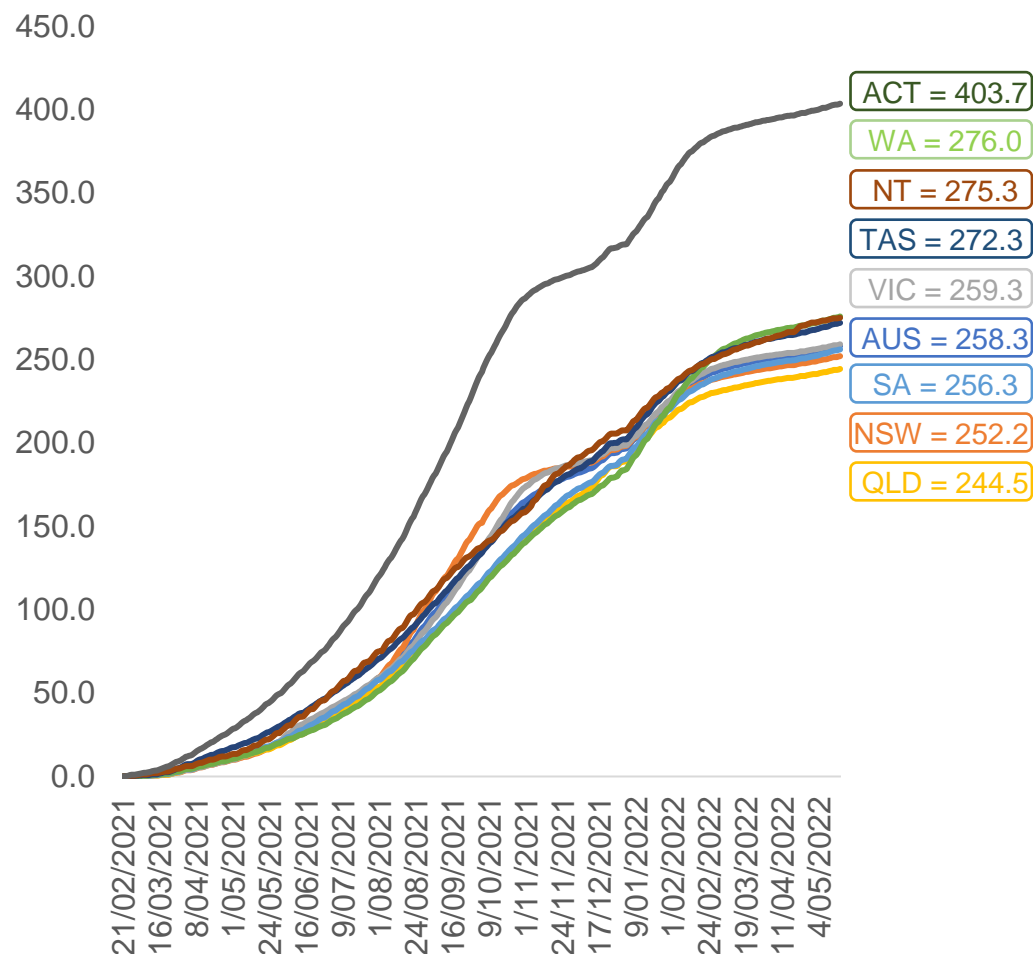


# Vaccinations by location

Data as at:  
17 May 2022

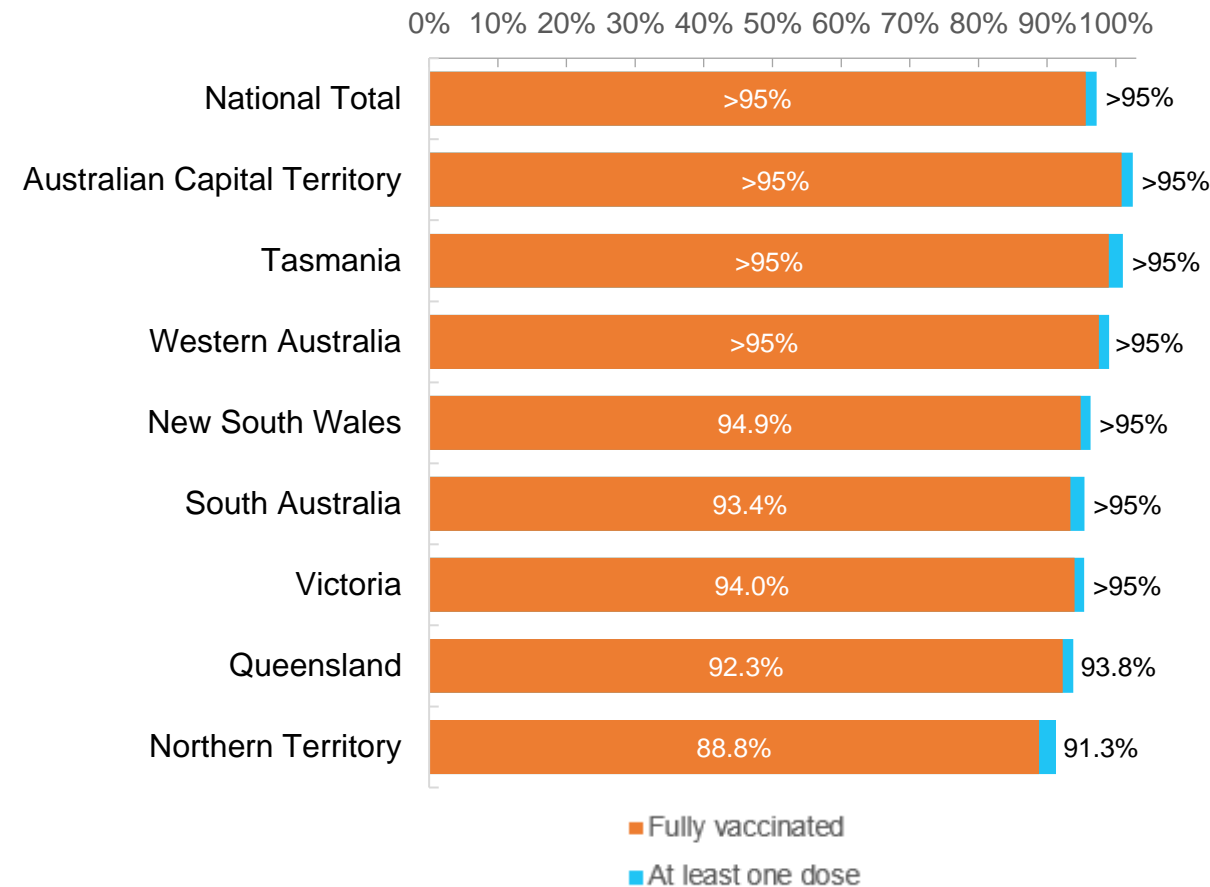
Australia's COVID-19  
Vaccine Roadmap

Cumulative total doses administered vs eligible state populations\*



\*Not an indication of percentage vaccinated, numbers will exceed 100 due to multiple doses required per person of the population.  
All doses are included for those aged 12 and above, and are based on vaccination provider location.

First and Second Doses by residential location



# Aboriginal and Torres Strait Islander peoples

## Number of people vaccinated

Data as at:  
17 May 2022  
Updated weekly

Australia's COVID-19  
Vaccine Roadmap



**441,580**

people over the age of 16  
have had at least one dose

**84.9%**

of people over the age of 16  
have had at least one dose



**422,736**

people over the age of 16  
are fully vaccinated

**81.2%**

of people over the age of 16 are  
fully vaccinated



People aged 12 – 15 years

**48,427**

**42,621**

**68.4%**

At least one dose

**60.2%**

Fully vaccinated

### 178 Aboriginal community controlled health services (ACCHS)

0#

50

27

44

12

3

21

21

**ACT**

**NSW**

**NT**

**QLD**

**SA**

**TAS**

**VIC**

**WA**

Medicare Address State <sup>##</sup>	Individuals Dose 1	Individuals Dose 1 %	Individuals Dose 2	Individuals Dose 2 %
Australian Capital Territory	4,799	91.3%	4,679	89.1%
New South Wales	135,796	87.3%	132,716	85.3%
Northern Territory	41,509	89.6%	39,430	85.1%
Queensland	116,047	81.7%	110,581	77.9%
South Australia	19,990	80.4%	18,582	74.7%
Tasmania	13,916	88.8%	13,509	86.2%
Victoria	35,635	90.4%	34,857	88.4%
Western Australia	53,672	86.6%	49,818	80.4%
Unknown/Other Territories	20,216	69.3%	18,564	63.6%
<b>Totals</b>	<b>441,580</b>	<b>84.9%</b>	<b>422,736</b>	<b>81.2%</b>

Source: Australian Immunisation Register

\*Identifying as Aboriginal and Torres Strait Islander is optional and the estimated population may be under reported.

\*\*Includes all Aboriginal and Torres Strait Islander peoples who have received a vaccination, not limited to those administered in an ACCHS setting

#ACCHS in the ACT are currently operating as a Commonwealth Vaccine Clinics so not included to avoid double counting

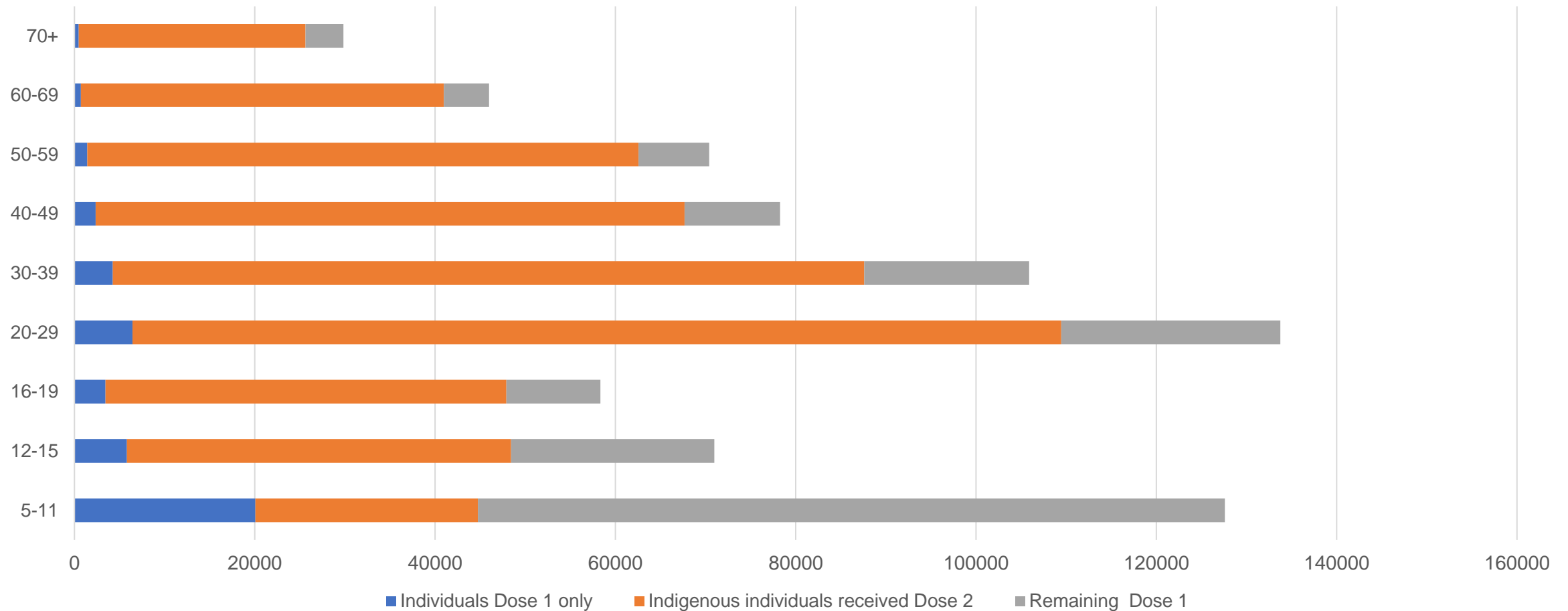
##The above table includes all identified Aboriginal and Torres Strait Islander people who are aged 16 and above by their state of residence.

# Aboriginal and Torres Strait Islander peoples

## Number of people vaccinated by age

Data as at:  
17 May 2022  
Updated weekly

Australia's COVID-19  
Vaccine Roadmap



Source: Australian Immunisation Register

# Commonwealth primary care

Data as at:  
17 May 2022

Australia's COVID-19  
Vaccine Roadmap



## Primary care vaccine administration sites

<b>5,729</b>	<b>128</b>	<b>178</b>	<b>3,597</b>
GPs	CVCs	ACCHS	Pharmacies



**36,146,170** total vaccine doses administered  
primary care settings as at 17 May  
**+ 60,057** recorded in the last 24 hours

## Primary care vaccinations by provider type

	Doses administered	Daily increase	7 day increase
General Practice* includes other Commonwealth	29,017,209	44,232	220,955
Pharmacy	7,128,961	15,825	88,010

**NSW**  
**12,486,015**  
(+19,187 daily increase)

**VIC**  
**8,979,681**  
(+14,369 daily increase)

**QLD**  
**6,949,876**  
(+12,297 daily increase)

**WA**  
**3,802,261**  
(+6,605 daily increase)

**TAS**  
**678,929**  
(+1,579 daily increase)

**SA**  
**2,152,994**  
(+4,362 daily increase)

**ACT**  
**570,803**  
(+1,294 daily increase)

**NT**  
**215,871**  
(+253 daily increase)

**309,740**

doses administered to persons  
residing in other territories or with  
missing residential information

\*General practice includes Commonwealth Vaccination Clinics, Aboriginal Community Health Centres, Royal Flying Doctor Service and other Commonwealth vaccination facilities

Source: Australian Immunisation Register

Data as at:  
17 May 2022

# Commonwealth aged care and disability doses administered



**1,286,126** (+ 741 last 24 hours)

Total vaccine doses administered in aged care and disability facilities as at 17 May

Number of doses administered as part of the Commonwealth aged and disability care rollout

**NSW**  
**562,593**  
(+356 daily increase)

**VIC**  
**239,820**  
(+304 daily increase)

**QLD**  
**204,431**  
(+126 daily increase)

**WA**  
**109,300**  
(+133 daily increase)

**TAS**  
**23,361**  
(<10 daily increase)

**SA**  
**84,541**  
(+27 daily increase)

**ACT**  
**17,370**  
(<10 daily increase)

**NT**  
**7,646**  
(<10 daily increase)

**37,064**

doses administered to persons  
residing in other territories or with  
missing residential information

\*Sourced from the Australian Immunisation Register. Includes all persons vaccinated at participating residential aged care, disability and related industry settings.

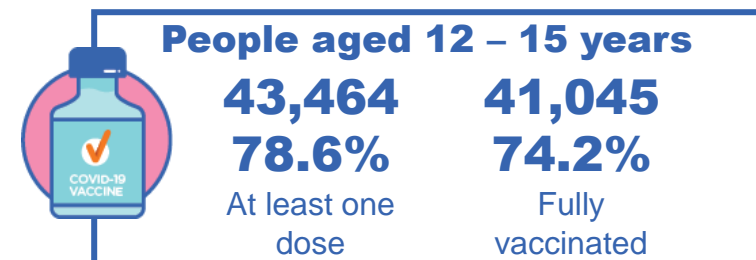
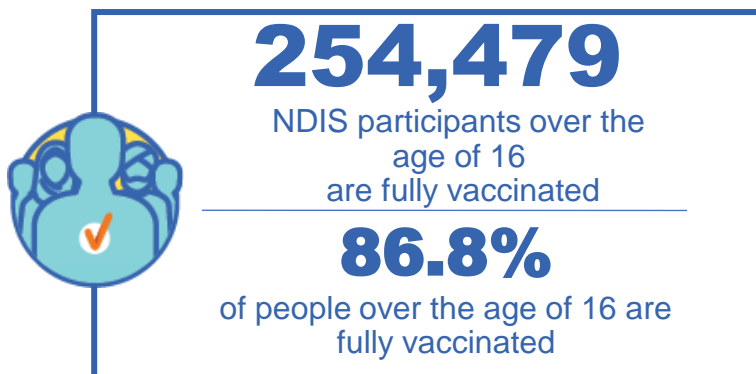
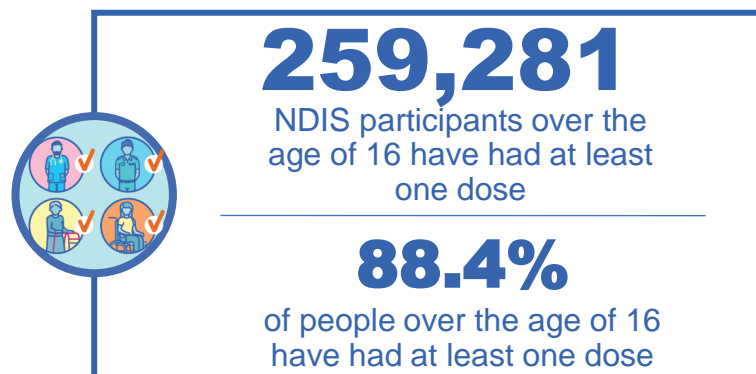
\*\*State level breakdown indicates the residential location and may not align to the state in which the vaccination occurred.

Source: Australian Immunisation Register

# National Disability Insurance Scheme (NDIS) reported vaccinations

Data as at:  
12 May 2022  
Updated weekly

Australia's COVID-19  
Vaccine Roadmap



## NDIS participant vaccinations

	People aged 16+ with at least one dose	People aged 16+ fully vaccinated	% People aged 16+ with at least one dose	% People aged 16+ fully vaccinated
ACT	4,897	4,832	90.3%	89.1%
NSW	79,544	78,246	88.7%	87.2%
NT	2,243	2,177	78.6%	76.3%
QLD	51,199	50,222	87.0%	85.4%
SA	21,182	20,663	86.3%	84.2%
TAS	6,496	6,344	88.4%	86.3%
VIC	68,955	67,767	89.5%	88.0%
WA	24,765	24,228	90.0%	88.0%
National	259,281	254,479	88.4%	86.8%

Source: Linkage between National Disability Insurance Agency data and the Australian Immunisation Register. Total NDIS participant numbers as at 28 February. Australian Immunisation Register data as at 11 May. Includes all participants regardless of residence type.

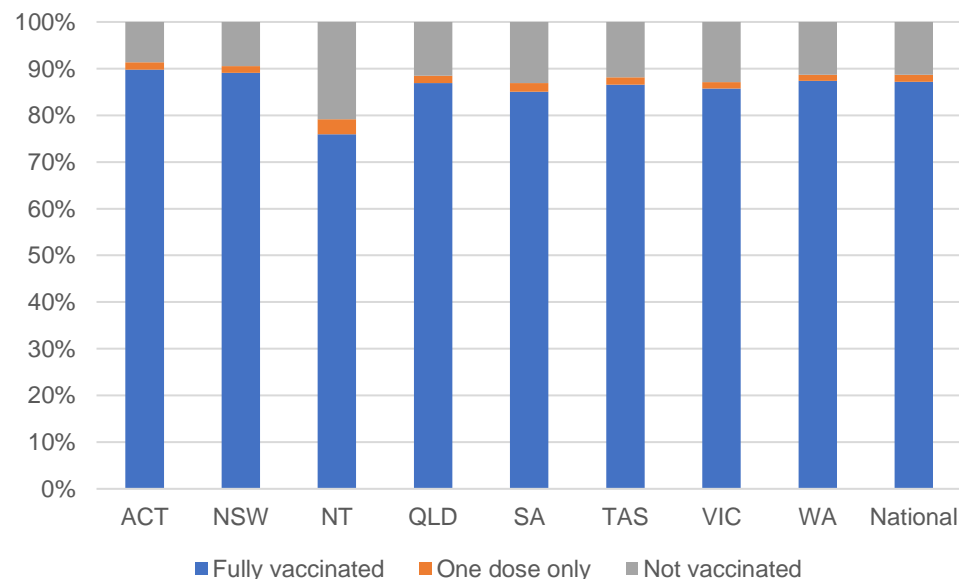
# National Disability Insurance Scheme (NDIS) reported vaccinations

Data as at:  
12 May 2022  
Updated weekly

Australia's COVID-19  
Vaccine Roadmap

NATIONAL	Total people with at least one dose	People fully vaccinated	Total number of individuals in cohort	% People with at least one dose	% People fully vaccinated
NDIS participants living in disability accommodation	20,794	20,451	23,352	89.0%	87.6%

## NDIS participants in disability and aged care accommodation



Source: Linkage between National Disability Insurance Agency data and the Australian Immunisation Register. Includes participants residing in disability accommodation only.

Source: Total NDIS participant numbers as at 28 February. Participant data as at 11 May. Australian Immunisation Register data as at 11 May. Worker data as at 12 May.

## NDIS workforce vaccinations

	NDIS workers with at least one dose	NDIS workers fully vaccinated	% NDIS workers with at least one dose	% NDIS workers fully vaccinated
NSW	124,560	119,711	98.2%	94.4%
VIC	116,347	112,949	98.3%	95.4%
QLD	69,914	69,030	97.6%	96.4%
WA	34,415	32,834	98.8%	94.2%
SA	35,573	33,272	98.5%	92.1%
TAS	10,857	10,622	99.1%	96.9%
ACT	11,976	11,953	98.8%	98.6%
NT	3,723	3,579	99.6%	95.8%
<b>TOTAL</b>	<b>407,365</b>	<b>393,950</b>	<b>98.3%</b>	<b>95.0%</b>

Source: the NDIS Commission has established a requirement for registered NDIS providers who provide intensive disability support services to report on the vaccination status of workers they employ, or otherwise engage, to deliver NDIS-funded supports and services, and who are required to be vaccinated in accordance with in-force state and territory public health orders. The statistics reflect data reported to the NDIS Commission by registered NDIS providers and should be considered indicative and subject to change

Note: Some registered NDIS providers are yet to report on the vaccination status of their workforce. The NDIS Commission is working with those providers around reporting requirements.

Remaining workers not included include those exempt from vaccination requirements, workers whose vaccination status is not yet verified by the provider (such as workers on leave) and provider reporting anomalies.



# Residential aged care vaccination rollout

Residential aged care facilities status

**176,228**

People fully vaccinated

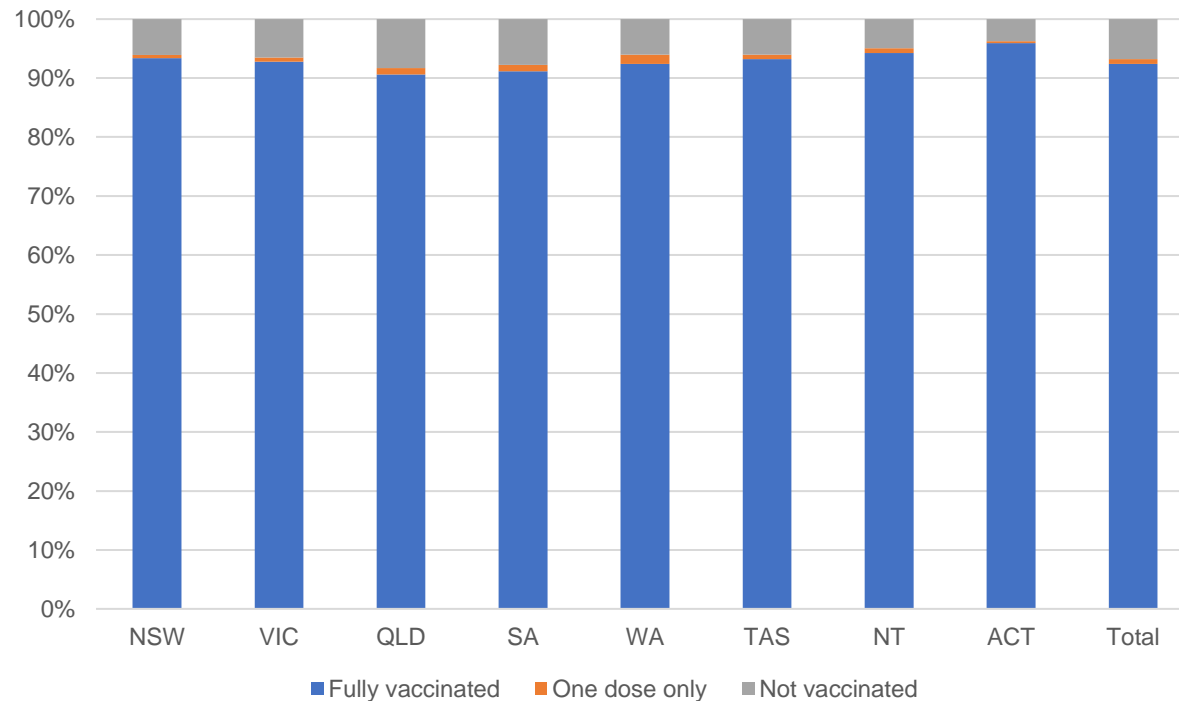
**177,805**

People with at least one dose

Australia's COVID-19 Vaccine Roadmap

Data as at:  
12 May 2022  
Updated weekly

## Aged care resident vaccinations



## Aged care worker vaccinations

Jurisdictions	Total workers with at least one dose	Workers fully vaccinated	% Workers with at least one dose	% Workers fully vaccinated
NSW	78,020	78,016	99.7%	99.7%
VIC	68,347	68,346	98.3%	98.3%
QLD	47,478	47,473	99.0%	99.0%
SA	26,895	26,879	98.5%	98.4%
WA	24,144	24,140	100.0%	99.9%
TAS	7,474	7,473	100.0%	100.0%
NT	898	898	100.0%	100.0%
ACT	2,854	2,854	96.7%	96.7%
Total	256,110	256,079	99.0%	99.0%

Source: My Aged Care Portal vaccination progress

\*Status updates are provided by facilities at least once per week. Reporting is updated Monday to Friday to encompass different facility updates being made on different days.

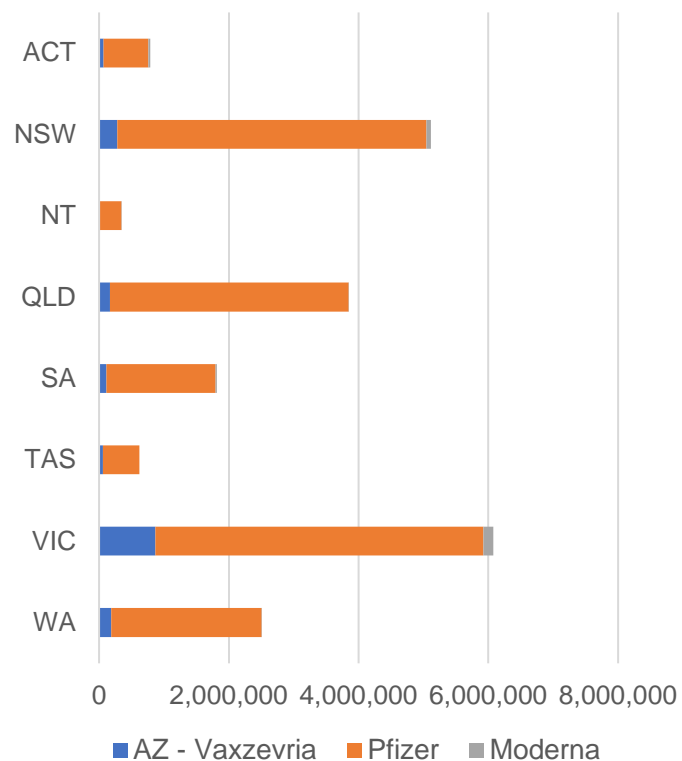
Data is sourced directly from Aged Care Service Providers and is not drawn or closely aligned with data from AIR due to inconsistencies and potential lags in uploading of records.



Data as at:  
17 May 2022

## Jurisdiction administered

Total vaccine doses administered in State and Territory clinics as at 17 May



**21,122,134** total vaccine doses administered  
in State and Territory clinics as at 17 May  
+ **5,767** recorded in the last 24 hours  
+ **40,248** recorded in the last 7 days

**NSW**  
**5,114,859**  
(+226 daily  
increase)

**VIC**  
**6,084,135**  
(+1,886 daily  
increase)

**QLD**  
**3,845,494**  
(+709 daily  
increase)

**WA**  
**2,507,052**  
(+944 daily  
increase)

**TAS**  
**622,652**  
(+266 daily  
increase)

**SA**  
**1,817,028**  
(+809 daily  
increase)

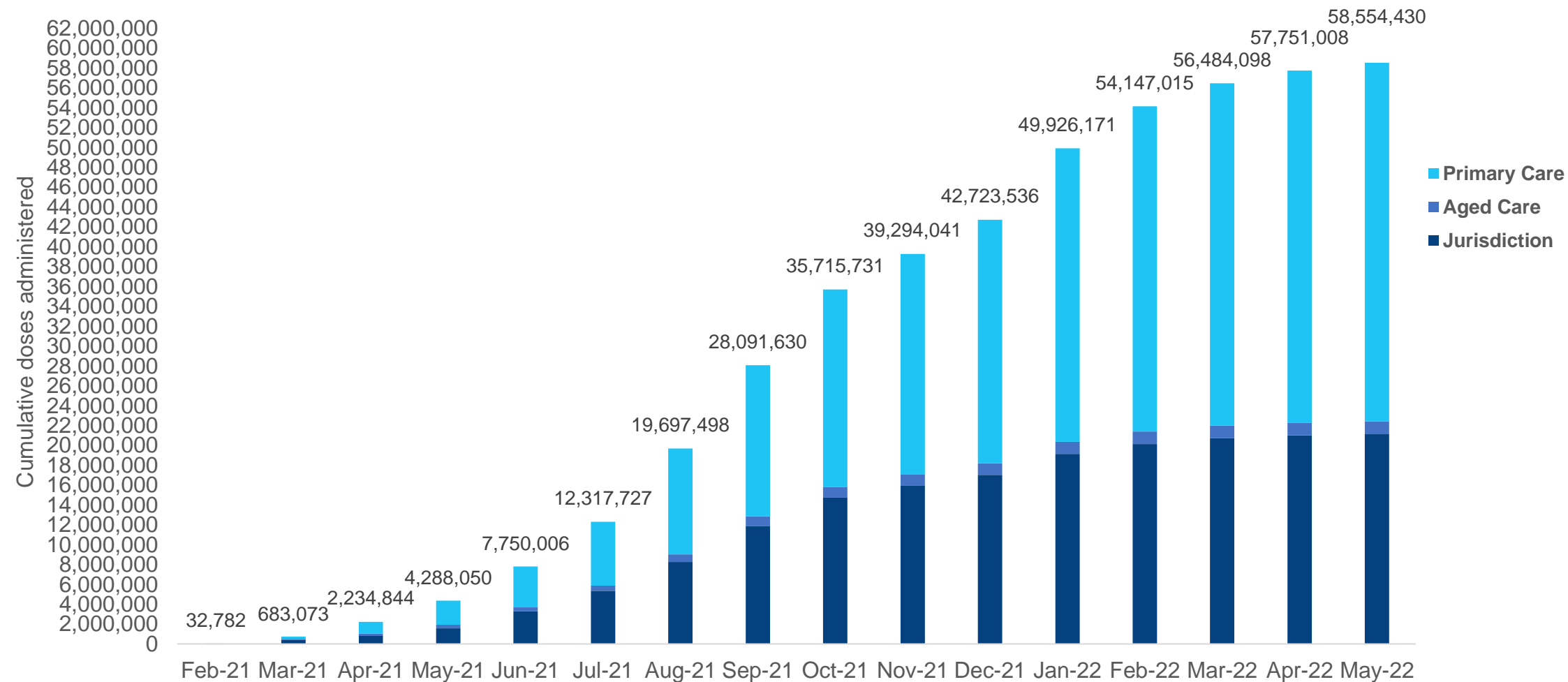
**ACT**  
**787,719**  
(+738 daily  
increase)

**NT**  
**343,195**  
(+189 daily  
increase)

\*Sourced from the Australian Immunisation Register. Numbers are calculated as difference in daily cumulative reported numbers to allow for historical corrections.

# Cumulative doses administered by channel

Data as at:  
17 May 2022



Source: Australian Immunisation Register

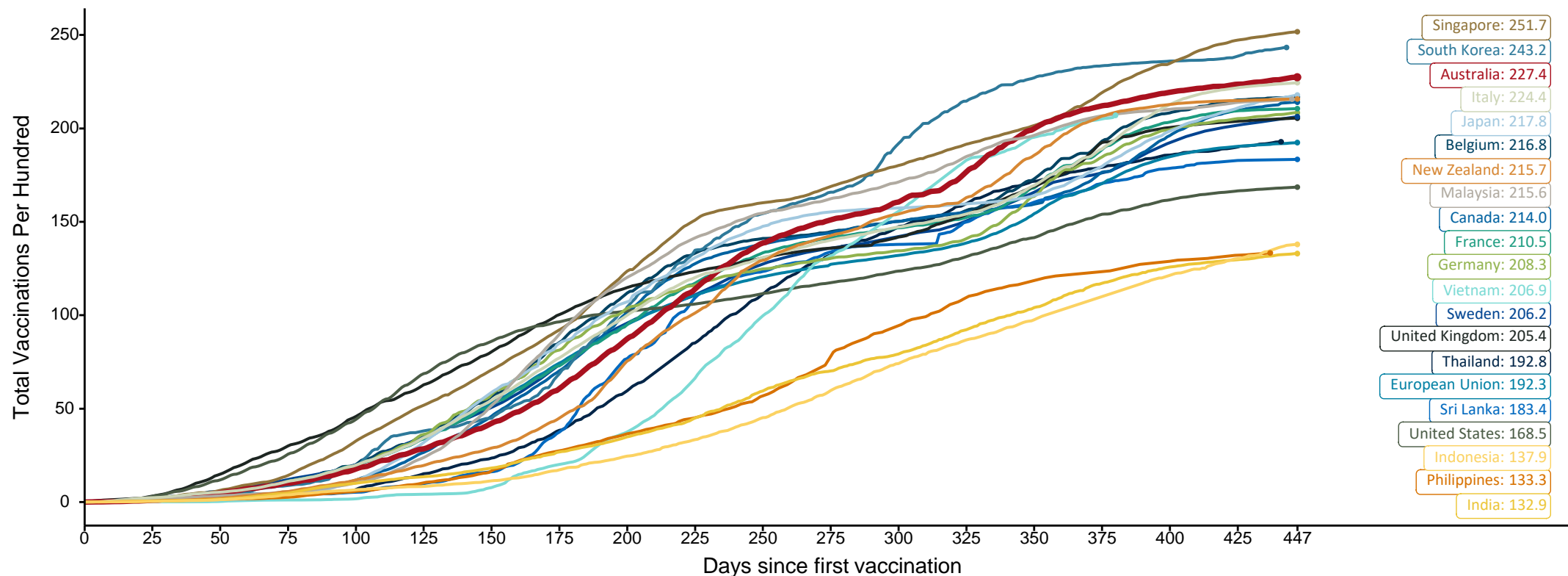
# Doses at equivalent stages of rollout (Day 447)

Data as at:  
15 May 2022  
Updated weekly

Australia's COVID-19  
Vaccine Roadmap

The x-axis is truncated at the length of Australia's vaccination program. Countries with intermittent reporting have had their doses per 100 imputed to Australia's current stage of rollout. Israel excluded as it is beyond scale of the graph

Cumulative doses administered (15 May): **58,427,221**



Note: From 11 January 2022, data for Australia includes all doses administered to people 5 and over. Prior to 11 January, data was for 12 and over.

Source: Department of Health (Australia), Our World in Data (international)

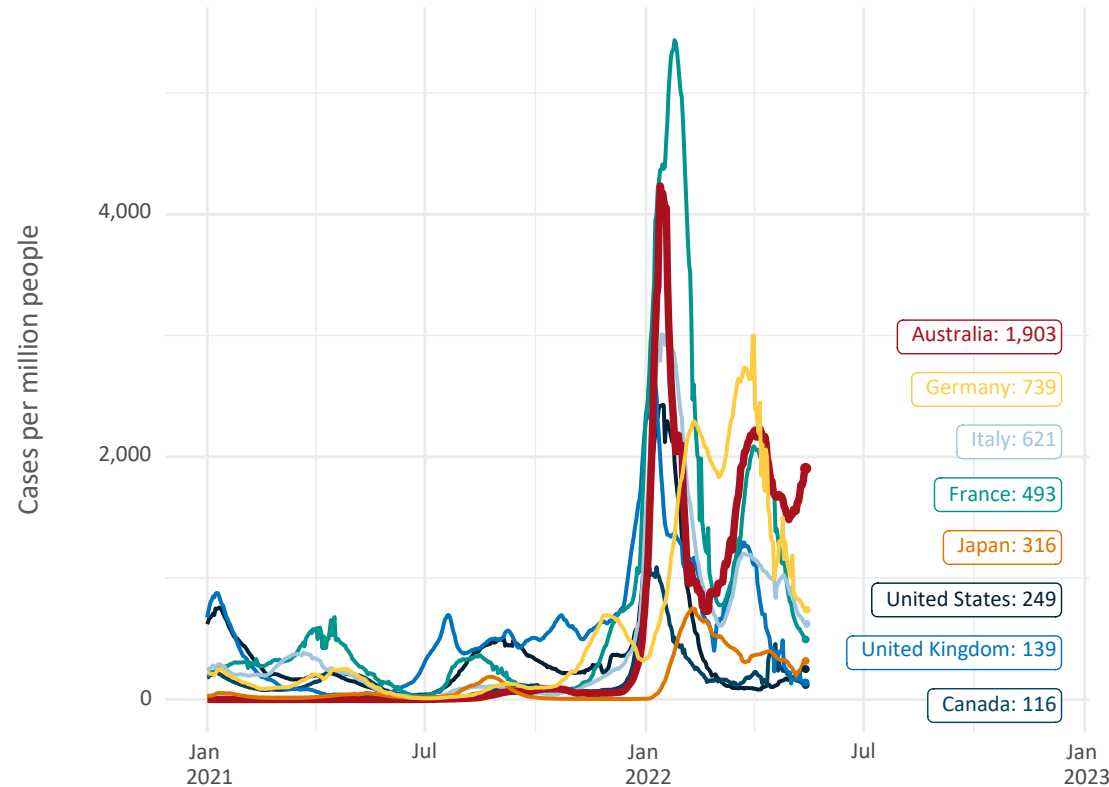
Latest data: 15 May

# International data – COVID-19

Australia's COVID-19  
Vaccine Roadmap

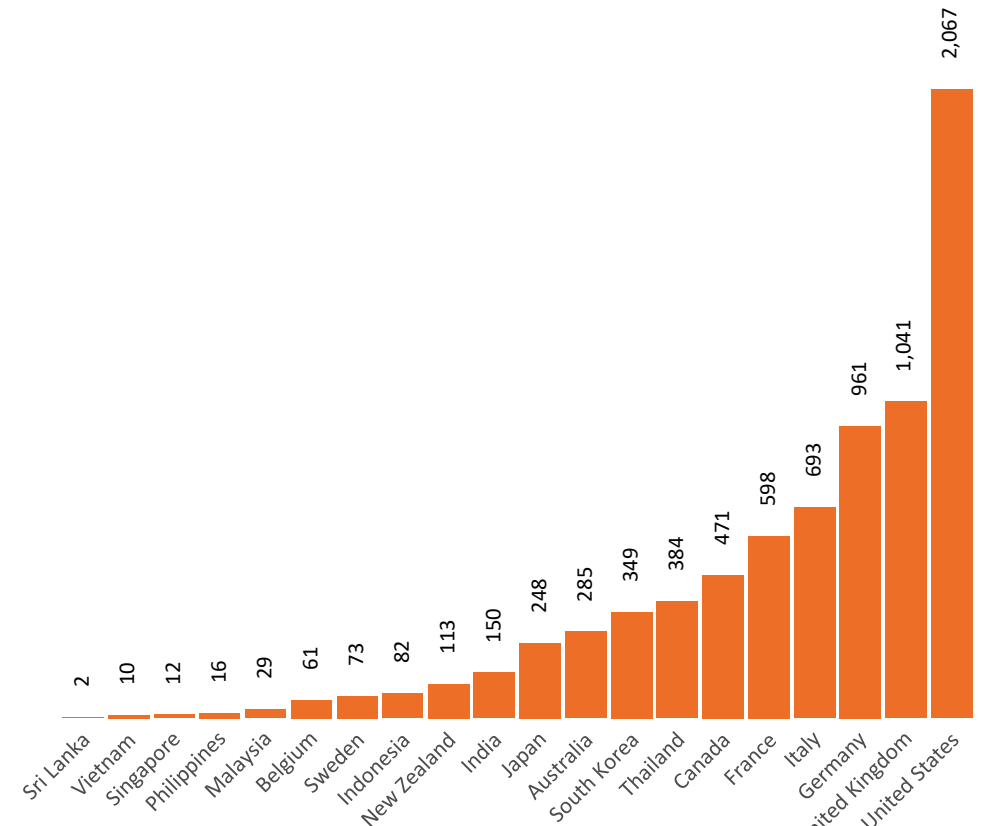
Data as at:  
15 May 2022  
Updated weekly

New daily cases per million since 2021, Australia and G7 countries  
Smoothed - 7 day average



Source: OWID  
Data downloaded: 16 May 2022 11:47  
Latest data: 15 May 2022

COVID-19 deaths in past 7 days - Australia and select countries



Source: OWID  
Data downloaded: 16 May 2022 11:47  
Latest data: 15 May 2022

# Pandemic Response Payments

Australia's COVID-19  
Vaccine Roadmap

Data as at midnight:  
15 May 2022 (updated weekly)

**2.38 million**

People have received at least one  
COVID Disaster Payment  
(including ISP200)

**8.04 million**

Claims granted across  
three different payments

**\$14.48 billion**

Paid Out as at 15 May 2022

Claims Received Digitally

**93%**

Three payments available:

**COVID Disaster Payment**

assisting during a lockdown event  
in a Commonwealth hotspot.

**Income Support Payment \$200**

for income support recipients who  
lost at least 8 hours of work.

**Pandemic Leave Disaster**

for those who have to self-isolate,  
quarantine or care.

For more information visit:

[www.servicesaustralia.gov.au](http://www.servicesaustralia.gov.au)



**COVID Disaster Payment:** 5.89 million claims received - 2.19 million individuals paid a total of \$12.59 billion.

**\$200 Income Support Payment:** 353,000 claims received - 183,000 individuals paid a total of \$268.92 million.

**Pandemic Leave Disaster Payment:** 2.31 million claims received - 1.38 million individuals paid a total of \$1.61 billion.

## COVID-19 DISASTER PAYMENTS

