



Australian Government
Operation COVID Shield

COVID-19 Vaccine Roll-out

16 May 2022

Data as at:
15 May 2022

Total vaccine doses



58,427,221 total vaccine
doses administered nationally as at 15 May
+9,513 recorded in the last 24 hours



20,043,639

people have had at least one
dose

>95%

of people over the age of 16
have had at least one dose



19,711,181

people are fully vaccinated

>95%

of people over the age of 16 are
fully vaccinated



13,568,316

people over the age of 16
who have received three or
more doses

NSW
18,123,067
(+3,028 daily
increase)

VIC
15,354,127
(+2,439 daily
increase)

QLD
11,050,971
(+1,600 daily
increase)

WA
6,430,767
(+1,289 daily
increase)

TAS
1,319,250
(+190 daily
increase)

SA
4,039,690
(+859 daily
increase)

ACT
1,527,023
(+102 daily
increase)

NT
582,326
(**<10** daily
increase)

*Administration state breakdown indicates state in which a vaccine was administered

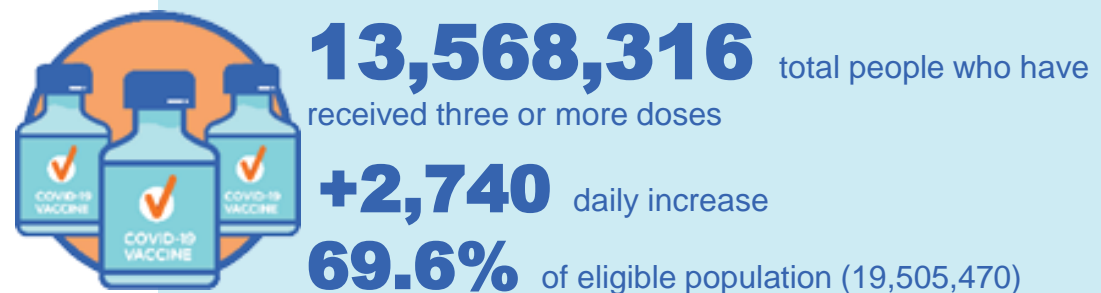
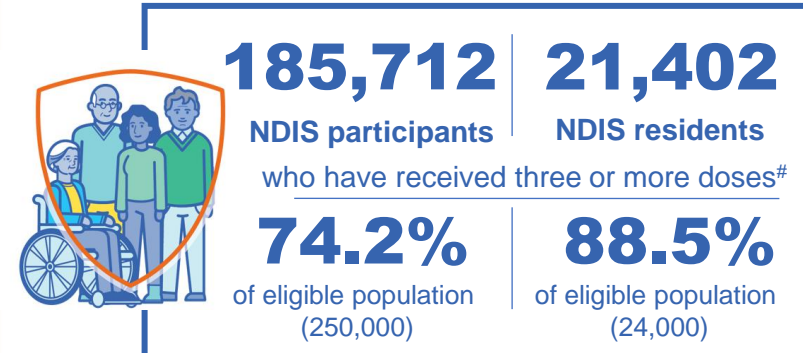
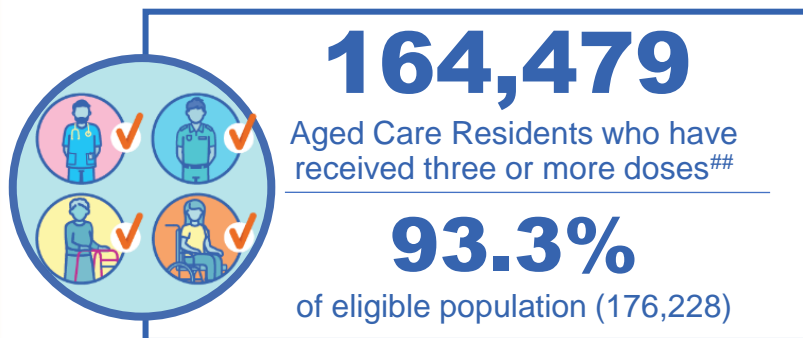
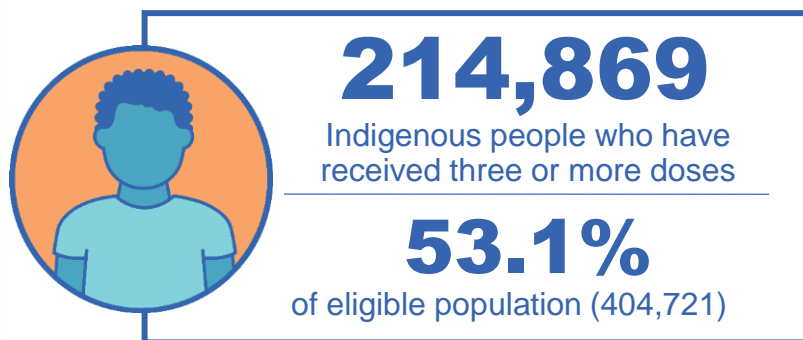
**Overall dose count includes instances of more than three doses per person in a small number of cases.

Source: Australian Immunisation Register

Booster Vaccinations

Australia's COVID-19
Vaccine Roadmap

Data as at:
15 May 2022



	Number of People	Daily Increase	% of Eligible
NSW	4,141,964	772	66.8%
VIC	3,627,230	595	71.8%
QLD	2,348,208	432	62.8%
WA	1,666,562	508	83.3%
SA	962,856	276	72.8%
TAS	310,058	52	72.2%
ACT	268,826	34	77.8%
NT	127,495	<10	76.5%

*People may belong to multiple groups and could be represented in the above breakdowns multiple times.
NDIS participants data as at 12 May 2022. ## Aged Care Residents data as at 13 May 2022.

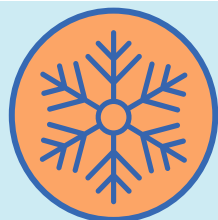
Source: Australian Immunisation Register

115,117 doses administered to persons
residing in other territories or with
missing residential information

Winter / Fourth Doses

Data as at:
15 May 2022
Updated weekly

Australia's COVID-19
Vaccine Roadmap



958,757 total people (16+) who have received four or more doses

+251,933 weekly increase

	Number of People 16+	Weekly Increase
ACT	22,334	4,740
NSW	316,549	79,396
NT	4,663	954
QLD	182,124	48,015
SA	75,433	21,857
TAS	26,891	7,334
VIC	239,316	61,581
WA	87,023	26,996

4,424 doses administered to persons
residing in other territories or with
missing residential information

Source: Australian Immunisation Register

Vaccinations by residential location

Australia's COVID-19 Vaccine Roadmap

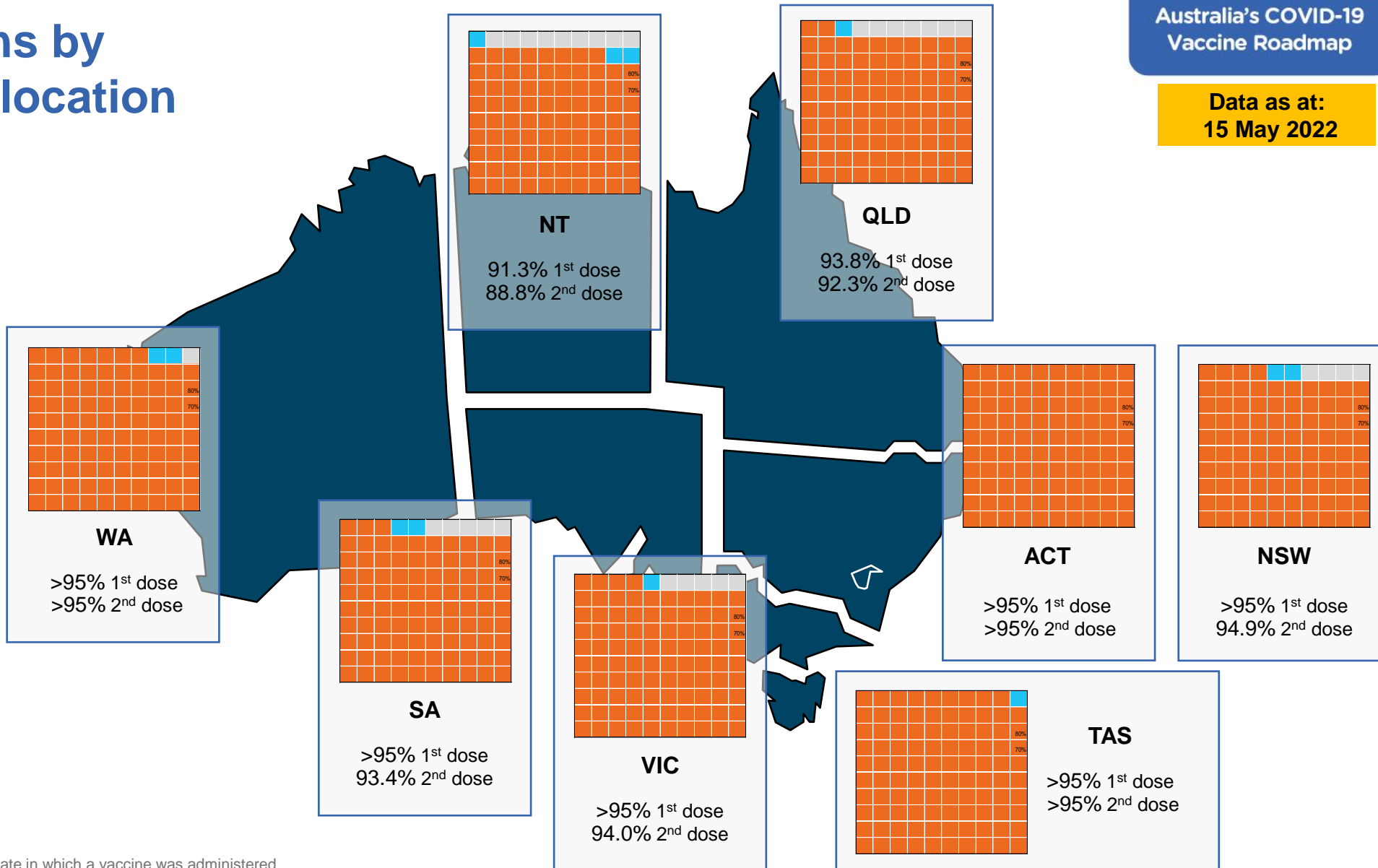
Data as at:
15 May 2022

First doses

Age	Today	4 weeks ago	8 weeks ago
16+	>95%	>95%	>95%
50+	>95%	>95%	>95%
70+	>95%	>95%	>95%

Fully vaccinated

Age	Today	4 weeks ago	8 weeks ago
16+	>95%	>95%	>95%
50+	>95%	>95%	>95%
70+	>95%	>95%	>95%



*Residential state may differ from the state in which a vaccine was administered

Commonwealth and Jurisdiction vaccine doses administered

Data as at:
15 May 2022



58,427,221 total vaccine
doses administered nationally as at 15 May

+ 9,513 recorded in the last 24 hours

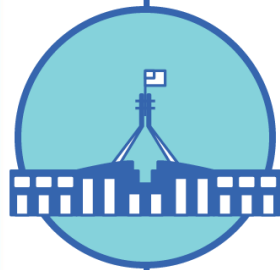


21,110,419

doses administered by state
and territory facilities

+ 2,628

recorded in the last 24 hours



37,316,802

doses administered by
commonwealth facilities

+ 6,885

recorded in the last 24 hours

36,032,523 total vaccine doses
administered in primary care settings

1,284,279 total vaccine doses
administered in aged care and disability
settings

NSW	Jurisdictions	Commonwealth
Cumulative	5,113,920	13,009,147
Daily increase	1,076	1,952

VIC	Jurisdictions	Commonwealth
Cumulative	6,080,555	9,273,572
Daily increase	488	1,951

QLD	Jurisdictions	Commonwealth
Cumulative	3,844,513	7,206,458
Daily increase	43	1,557

WA	Jurisdictions	Commonwealth
Cumulative	2,505,049	3,925,718
Daily increase	417	872

TAS	Jurisdictions	Commonwealth
Cumulative	622,320	696,930
Daily increase	141	49

SA	Jurisdictions	Commonwealth
Cumulative	1,815,248	2,224,442
Daily increase	412	447

ACT	Jurisdictions	Commonwealth
Cumulative	786,051	740,972
Daily increase	47	55

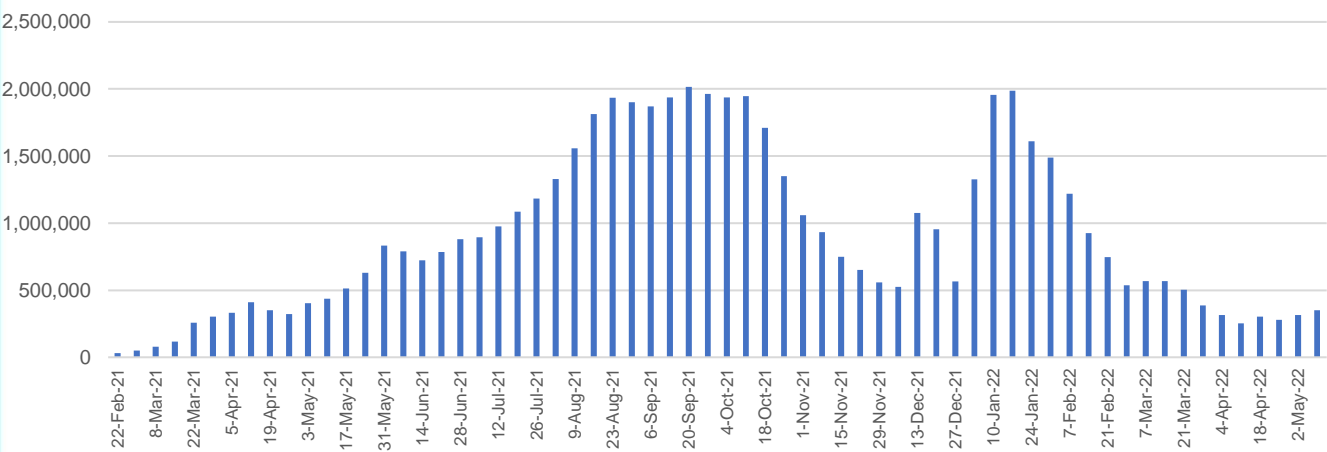
NT	Jurisdictions	Commonwealth
Cumulative	342,763	239,563
Daily increase	<10	<10

Vaccine milestone charts

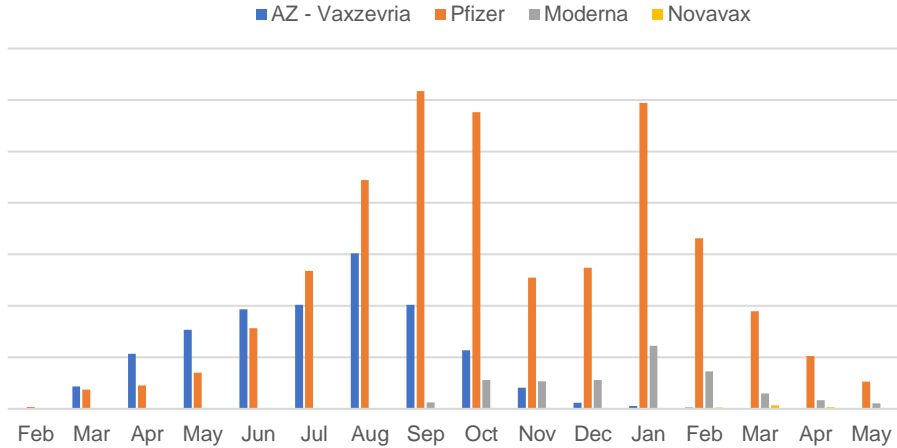
Data as at:
15 May 2022

Australia's COVID-19
Vaccine Roadmap

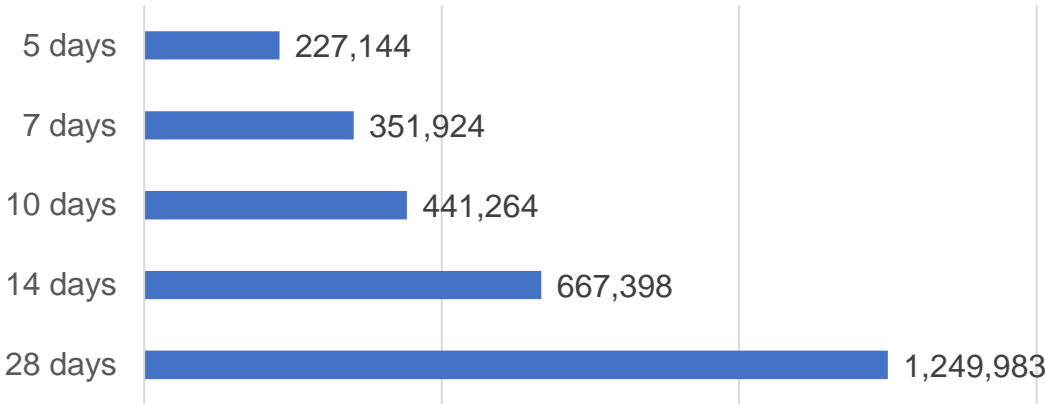
Doses Administered by Week



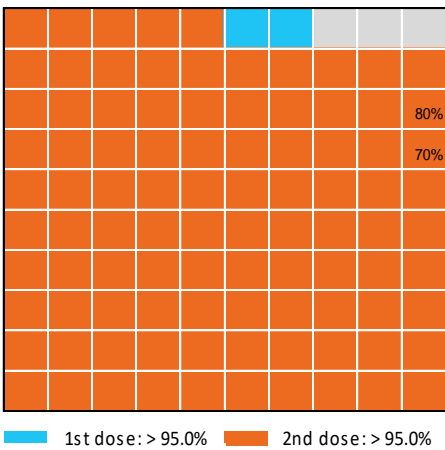
Doses by administration month and vaccine type



Doses Reported



Eligible population percentage coverage



*Each square represents 1% of the national population.
Squares are filled as milestones are achieved.

*Sourced from the Australian Immunisation Register.

Doses by age and sex

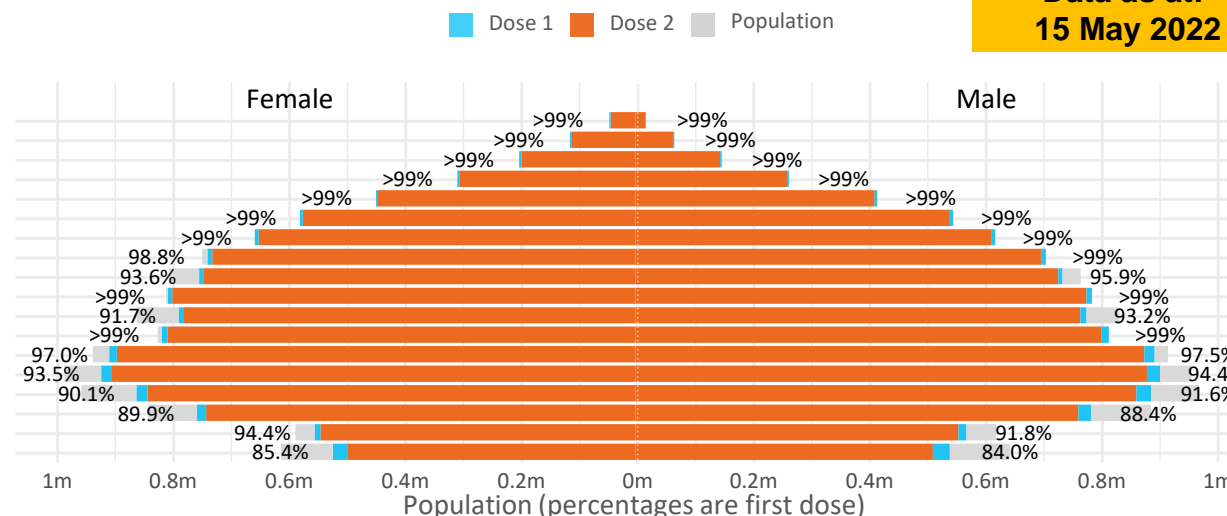
First and second doses by age and sex

Australia's COVID-19
Vaccine Roadmap

Data as at:
15 May 2022

Age	Dose 1	Dose 2
95+	63,027 (>99%)	59,625 (>99%)
90-94	178,629 (>99%)	173,041 (>99%)
85-89	346,219 (>99%)	339,281 (>99%)
80-84	566,419 (>99%)	559,160 (>99%)
75-79	856,123 (>99%)	847,768 (>99%)
70-74	1,115,714 (>99%)	1,104,620 (>99%)
65-69	1,265,499 (>99%)	1,251,199 (>99%)
60-64	1,432,747 (>99%)	1,416,583 (98.6%)
55-59	1,475,601 (94.9%)	1,459,134 (93.8%)
50-54	1,578,777 (>99%)	1,561,858 (>99%)
45-49	1,551,459 (92.5%)	1,533,010 (91.4%)
40-44	1,619,437 (>99%)	1,595,482 (98.5%)
35-39	1,789,304 (97.5%)	1,757,463 (95.8%)
30-34	1,815,622 (94.4%)	1,774,239 (92.2%)
25-29	1,742,826 (91.4%)	1,695,559 (88.9%)
20-24	1,532,662 (89.5%)	1,493,466 (87.2%)
16-19	1,113,574 (93.1%)	1,089,693 (91.1%)
12-15	1,053,759 (84.7%)	998,840 (80.3%)

	16+	50+	12-15	5-11
Dose 1	97.21% (20,043,639 doses / 20,619,959 people)	>99% (8,878,755 doses / 8,749,703 people)	84.71% (1,053,759 doses / 1,243,990 people)	52.77% (1,201,291 doses / 2,276,638 people)
Dose 2	95.59% (19,711,181 doses / 20,619,959 people)	>99% (8,772,269 doses / 8,749,703 people)	80.29% (998,840 doses / 1,243,990 people)	37.99% (865,005 doses / 2,276,638 people)

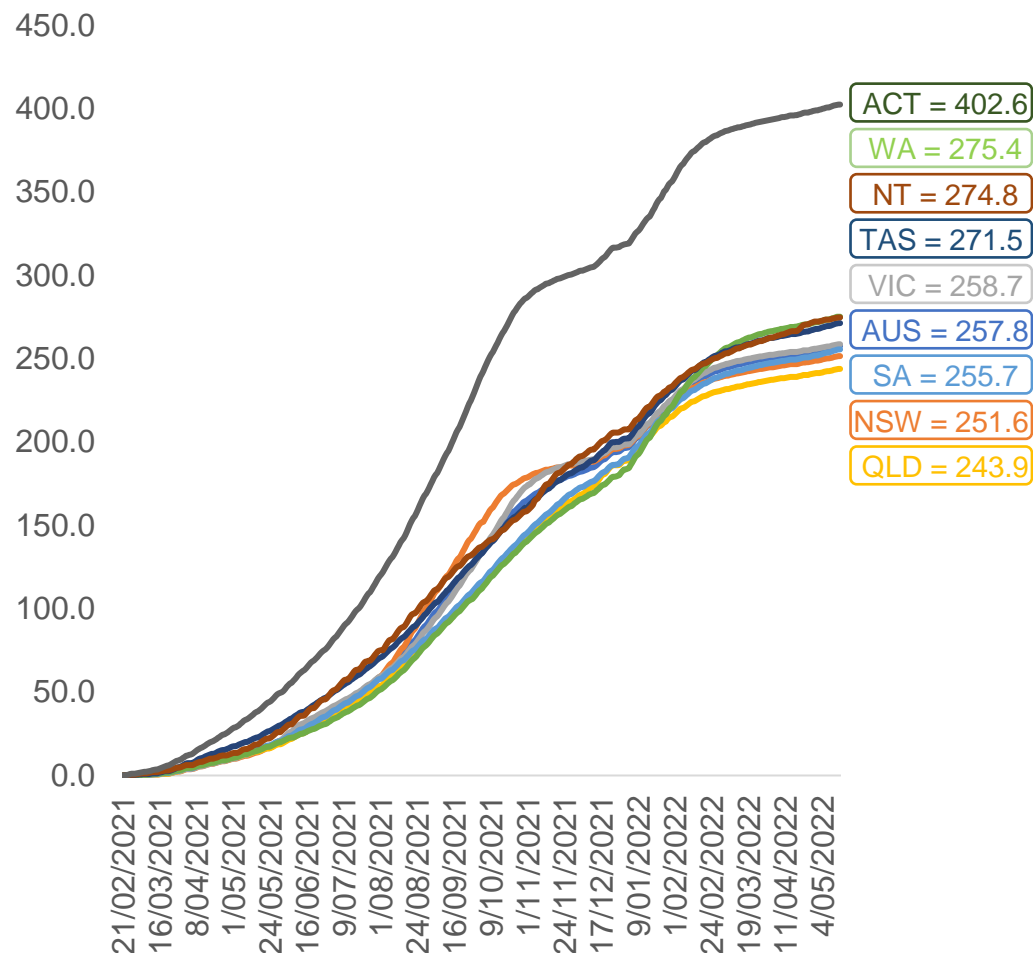


	AUS	ACT	NSW	NT	QLD	SA	TAS	VIC	WA
16 and over - dose 1	20,043,639	352,483	6,323,555	173,926	3,857,885	1,374,196	444,694	5,157,568	2,093,870
16 and over - dose 2	19,711,181	346,934	6,227,714	169,213	3,794,127	1,344,836	435,626	5,080,899	2,062,626
16 and over - population	20,619,959*	344,037	6,565,651	190,571	4,112,707	1,440,400	440,172	5,407,574	2,114,978
16 and over % with dose 1	97.21%	>99%	96.31%	91.27%	93.80%	95.40%	>99%	95.38%	>99%
16 and over % with dose 2	95.59%	>99%	94.85%	88.79%	92.25%	93.37%	98.97%	93.96%	97.52%
5 to 11 - dose 1	1,201,291	31,922	358,390	13,245	208,634	84,215	28,688	326,787	141,565
5 to 11 - dose 2	865,005	26,562	262,262	8,223	145,166	61,041	22,732	236,865	97,698
5 to 11 - population	2,276,638	39,789	716,460	24,750	478,731	148,816	45,033	578,499	244,154
5 to 11 % with dose 1	52.77%	80.23%	50.02%	53.52%	43.58%	56.59%	63.70%	56.49%	57.98%
5 to 11 % with dose 2	37.99%	66.76%	36.61%	33.22%	30.32%	41.02%	50.48%	40.94%	40.01%
12 to 15 - dose 1	1,053,759	20,091	324,097	10,829	206,654	68,428	22,948	275,313	115,832
12 to 15 - dose 2	998,840	19,560	309,913	9,754	193,576	64,804	21,848	263,660	107,373
12 to 15 - population	1,243,990	19,693	390,330	13,060	270,146	82,747	26,308	308,611	132,869
12 to 15 % with dose 1	84.71%	>99%	83.03%	82.92%	76.50%	82.70%	87.23%	89.21%	87.18%
12 to 15 % with dose 2	80.29%	>99%	79.40%	74.69%	71.66%	78.32%	83.05%	85.43%	80.81%

*National population will not equal sum of listed jurisdictions due to a small number of people counted in national population residing in some 'other' territories. Sum of state doses will not add to national total as some records are unable to be geocoded to a State or Territory.
Doses sourced from Australian Immunisation Register, population from ABS ERP June 2020

Vaccinations by location

Cumulative total doses administered vs eligible state populations*

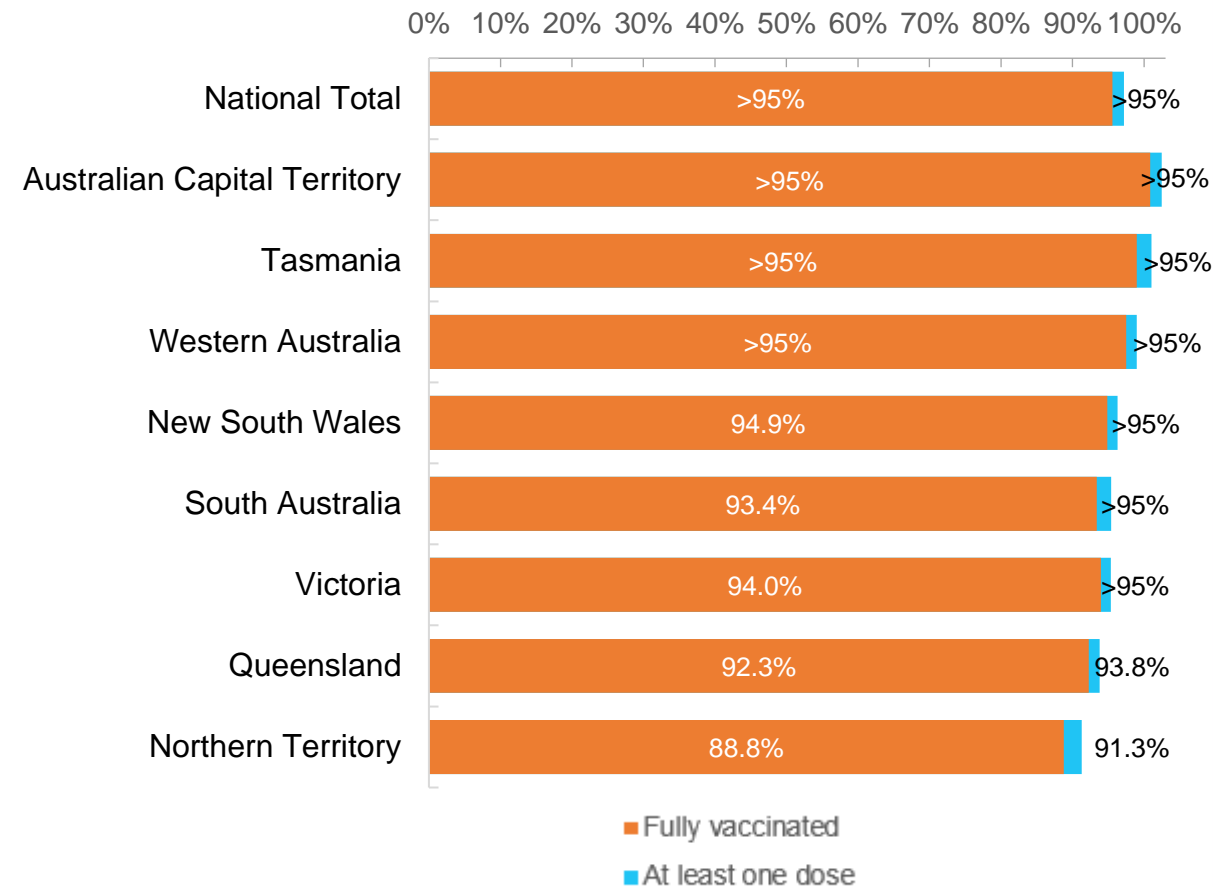


*Not an indication of percentage vaccinated, numbers will exceed 100 due to multiple doses required per person of the population. All doses are included for those aged 12 and above, and are based on vaccination provider location.

Data as at:
15 May 2022

Australia's COVID-19
Vaccine Roadmap

First and Second Doses by residential location



Aboriginal and Torres Strait Islander peoples

Number of people vaccinated

Data as at:
10 May 2022
Updated weekly

Australia's COVID-19
Vaccine Roadmap



440,767

people over the age of 16
have had at least one dose

84.5%

of people over the age of 16
have had at least one dose



421,727

people over the age of 16
are fully vaccinated

80.9%

of people over the age of 16 are
fully vaccinated



People aged 12 – 15 years

48,508

42,695

68.3%

At least one dose

60.1%

Fully vaccinated

178 Aboriginal community controlled health services (ACCHS)

0#

50

27

44

12

3

21

21

ACT

NSW

NT

QLD

SA

TAS

VIC

WA

Medicare Address State ^{##}	Individuals Dose 1	Individuals Dose 1 %	Individuals Dose 2	Individuals Dose 2 %
Australian Capital Territory	4,786	91.0%	4,665	88.7%
New South Wales	135,454	86.8%	132,367	84.8%
Northern Territory	41,486	89.5%	39,363	85.0%
Queensland	115,805	81.4%	110,312	77.6%
South Australia	19,959	80.1%	18,535	74.4%
Tasmania	13,921	88.6%	13,514	86.0%
Victoria	35,552	89.8%	34,770	87.8%
Western Australia	53,597	86.3%	49,671	80.0%
Unknown/Other Territories	20,207	69.1%	18,530	63.4%
Totals	440,767	84.5%	421,727	80.9%

Source: Australian Immunisation Register

*Identifying as Aboriginal and Torres Strait Islander is optional and the estimated population may be under reported.

**Includes all Aboriginal and Torres Strait Islander peoples who have received a vaccination, not limited to those administered in an ACCHS setting

#ACCHS in the ACT are currently operating as a Commonwealth Vaccine Clinics so not included to avoid double counting

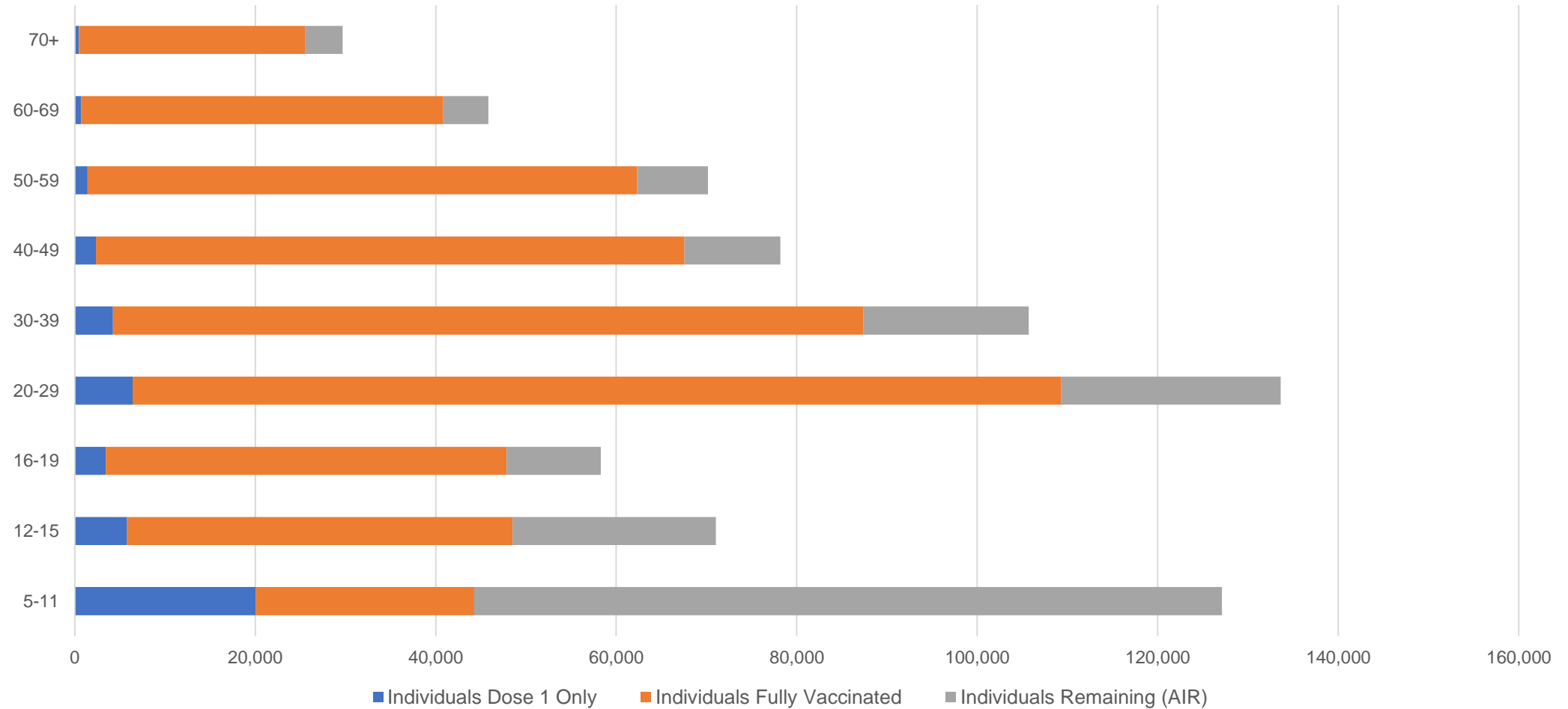
##The above table includes all identified Aboriginal and Torres Strait Islander people who are aged 16 and above by their state of residence.

Aboriginal and Torres Strait Islander peoples

Number of people vaccinated by age

Data as at:
10 May 2022
Updated weekly

Australia's COVID-19
Vaccine Roadmap



Source: Australian Immunisation Register

Commonwealth primary care

Data as at:
15 May 2022

Australia's COVID-19
Vaccine Roadmap



Primary care vaccine administration sites

5,724	128	178	3,595
GPs	CVCs	ACCHS	Pharmacies



36,032,523 total vaccine doses administered
primary care settings as at 15 May
+ 6,745 recorded in the last 24 hours

Primary care vaccinations by provider type

	Doses administered	Daily increase	7 day increase
General Practice* includes other Commonwealth	28,935,784	4,902	217,659
Pharmacy	7,096,739	1,843	88,279

NSW
12,449,152
(+1,914 daily increase)

VIC
8,952,820
(+1,883 daily increase)

QLD
6,927,137
(+1,405 daily increase)

WA
3,789,710
(+881 daily increase)

TAS
675,677
(+45 daily increase)

SA
2,144,097
(+407 daily increase)

ACT
568,605
(+77 daily increase)

NT
215,429
(**<10** daily increase)

309,896

doses administered to persons
residing in other territories or with
missing residential information

*General practice includes Commonwealth Vaccination Clinics, Aboriginal Community Health Centres, Royal Flying Doctor Service and other Commonwealth vaccination facilities

Source: Australian Immunisation Register

Data as at:
15 May 2022

Commonwealth aged care and disability doses administered



1,284,279 (+ 140 last 24 hours)

Total vaccine doses administered in aged care and disability facilities as at 15 May

Number of doses administered as part of the Commonwealth aged and disability care rollout

NSW
561,828
(**<10** daily increase)

VIC
239,125
(**+85** daily increase)

QLD
204,158
(**+37** daily increase)

WA
109,065
(**<10** daily increase)

TAS
23,353
(**<10** daily increase)

SA
84,524
(**<10** daily increase)

ACT
17,592
(**<10** daily increase)

NT
7,628
(**<10** daily increase)

37,006

doses administered to persons
residing in other territories or with
missing residential information

*Sourced from the Australian Immunisation Register. Includes all persons vaccinated at participating residential aged care, disability and related industry settings.

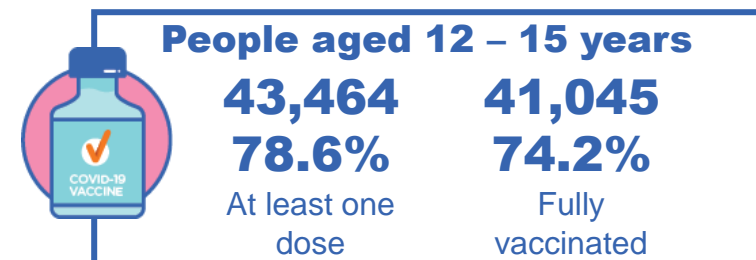
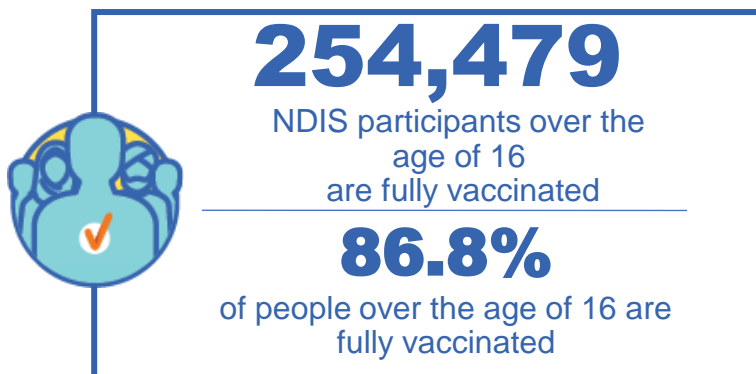
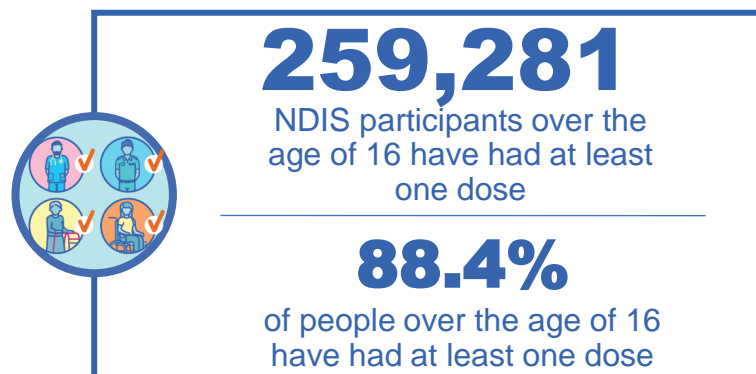
**State level breakdown indicates the residential location and may not align to the state in which the vaccination occurred.

Source: Australian Immunisation Register

National Disability Insurance Scheme (NDIS) reported vaccinations

Data as at:
12 May 2022
Updated weekly

Australia's COVID-19
Vaccine Roadmap



NDIS participant vaccinations

	People aged 16+ with at least one dose	People aged 16+ fully vaccinated	% People aged 16+ with at least one dose	% People aged 16+ fully vaccinated
ACT	4,897	4,832	90.3%	89.1%
NSW	79,544	78,246	88.7%	87.2%
NT	2,243	2,177	78.6%	76.3%
QLD	51,199	50,222	87.0%	85.4%
SA	21,182	20,663	86.3%	84.2%
TAS	6,496	6,344	88.4%	86.3%
VIC	68,955	67,767	89.5%	88.0%
WA	24,765	24,228	90.0%	88.0%
National	259,281	254,479	88.4%	86.8%

Source: Linkage between National Disability Insurance Agency data and the Australian Immunisation Register. Total NDIS participant numbers as at 28 February. Australian Immunisation Register data as at 11 May. Includes all participants regardless of residence type.

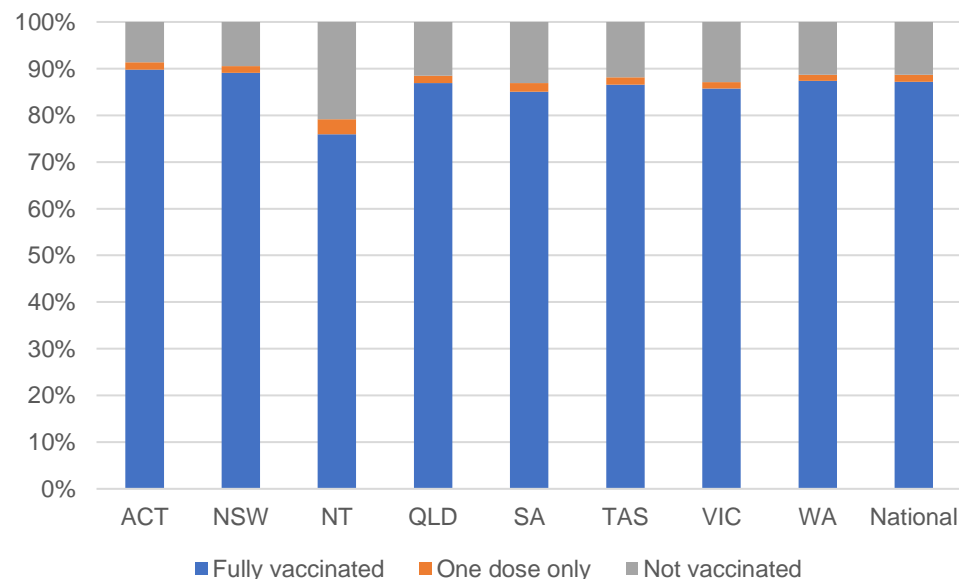
National Disability Insurance Scheme (NDIS) reported vaccinations

Data as at:
12 May 2022
Updated Weekly

Australia's COVID-19
Vaccine Roadmap

NATIONAL	Total people with at least one dose	People fully vaccinated	Total number of individuals in cohort	% People with at least one dose	% People fully vaccinated
NDIS participants living in disability accommodation	20,794	20,451	23,352	89.0%	87.6%

NDIS participants in disability and aged care accommodation



Source: Linkage between National Disability Insurance Agency data and the Australian Immunisation Register. Includes participants residing in disability accommodation only.

Source: Total NDIS participant numbers as at 28 February. Participant data as at 11 May. Australian Immunisation Register data as at 11 May. Worker data as at 12 May.

NDIS workforce vaccinations

	NDIS workers with at least one dose	NDIS workers fully vaccinated	% NDIS workers with at least one dose	% NDIS workers fully vaccinated
NSW	124,560	119,711	98.2%	94.4%
VIC	116,347	112,949	98.3%	95.4%
QLD	69,914	69,030	97.6%	96.4%
WA	34,415	32,834	98.8%	94.2%
SA	35,573	33,272	98.5%	92.1%
TAS	10,857	10,622	99.1%	96.9%
ACT	11,976	11,953	98.8%	98.6%
NT	3,723	3,579	99.6%	95.8%
TOTAL	407,365	393,950	98.3%	95.0%

Source: the NDIS Commission has established a requirement for registered NDIS providers who provide intensive disability support services to report on the vaccination status of workers they employ, or otherwise engage, to deliver NDIS-funded supports and services, and who are required to be vaccinated in accordance with in-force state and territory public health orders. The statistics reflect data reported to the NDIS Commission by registered NDIS providers and should be considered indicative and subject to change

Note: Some registered NDIS providers are yet to report on the vaccination status of their workforce. The NDIS Commission is working with those providers around reporting requirements.

Remaining workers not included include those exempt from vaccination requirements, workers whose vaccination status is not yet verified by the provider (such as workers on leave) and provider reporting anomalies.

Residential aged care vaccination rollout

Residential aged care facilities status

176,228

People fully vaccinated

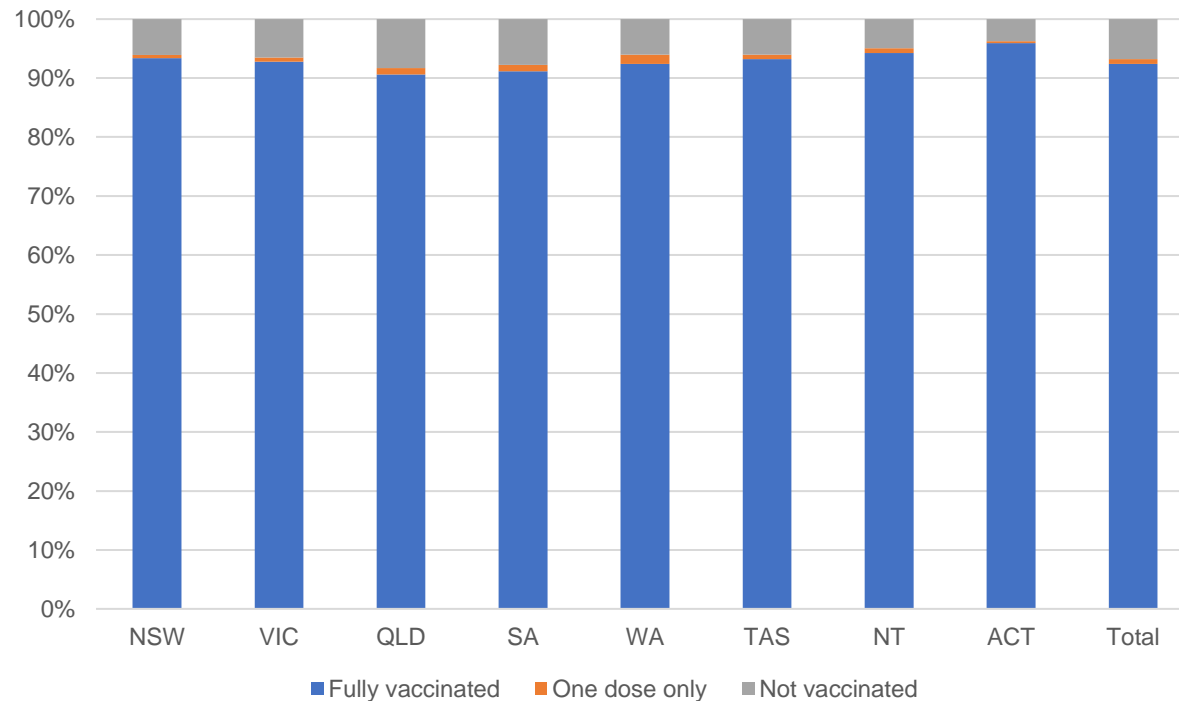
177,805

People with at least one dose

Australia's COVID-19 Vaccine Roadmap

Data as at:
12 May 2022
Updated weekly

Aged care resident vaccinations



Aged care worker vaccinations

Jurisdictions	Total workers with at least one dose	Workers fully vaccinated	% Workers with at least one dose	% Workers fully vaccinated
NSW	78,020	78,016	99.7%	99.7%
VIC	68,347	68,346	98.3%	98.3%
QLD	47,478	47,473	99.0%	99.0%
SA	26,895	26,879	98.5%	98.4%
WA	24,144	24,140	100.0%	99.9%
TAS	7,474	7,473	100.0%	100.0%
NT	898	898	100.0%	100.0%
ACT	2,854	2,854	96.7%	96.7%
Total	256,110	256,079	99.0%	99.0%

Source: My Aged Care Portal vaccination progress

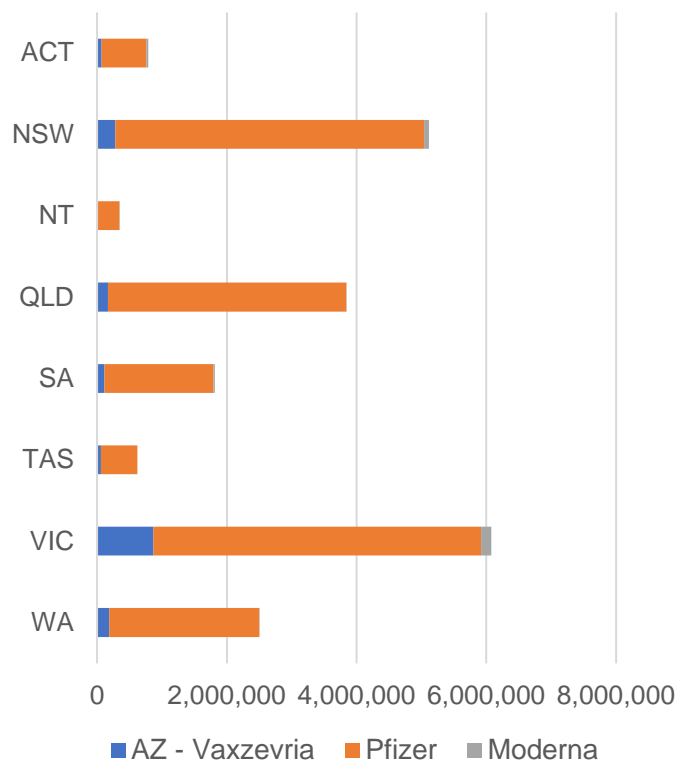
*Status updates are provided by facilities at least once per week. Reporting is updated Monday to Friday to encompass different facility updates being made on different days.

Data is sourced directly from Aged Care Service Providers and is not drawn or closely aligned with data from AIR due to inconsistencies and potential lags in uploading of records.

Data as at:
15 May 2022

Jurisdiction administered

Total vaccine doses administered in State and Territory clinics as at 15 May



21,110,419 total vaccine doses administered
in State and Territory clinics as at 15 May
+ **2,628** recorded in the last 24 hours
+ **41,296** recorded in the last 7 days

NSW
5,113,920
(+1,076 daily
increase)

VIC
6,080,555
(+488 daily
increase)

QLD
3,844,513
(+43 daily
increase)

WA
2,505,049
(+417 daily
increase)

TAS
622,320
(+141 daily
increase)

SA
1,815,248
(+412 daily
increase)

ACT
786,051
(+47 daily
increase)

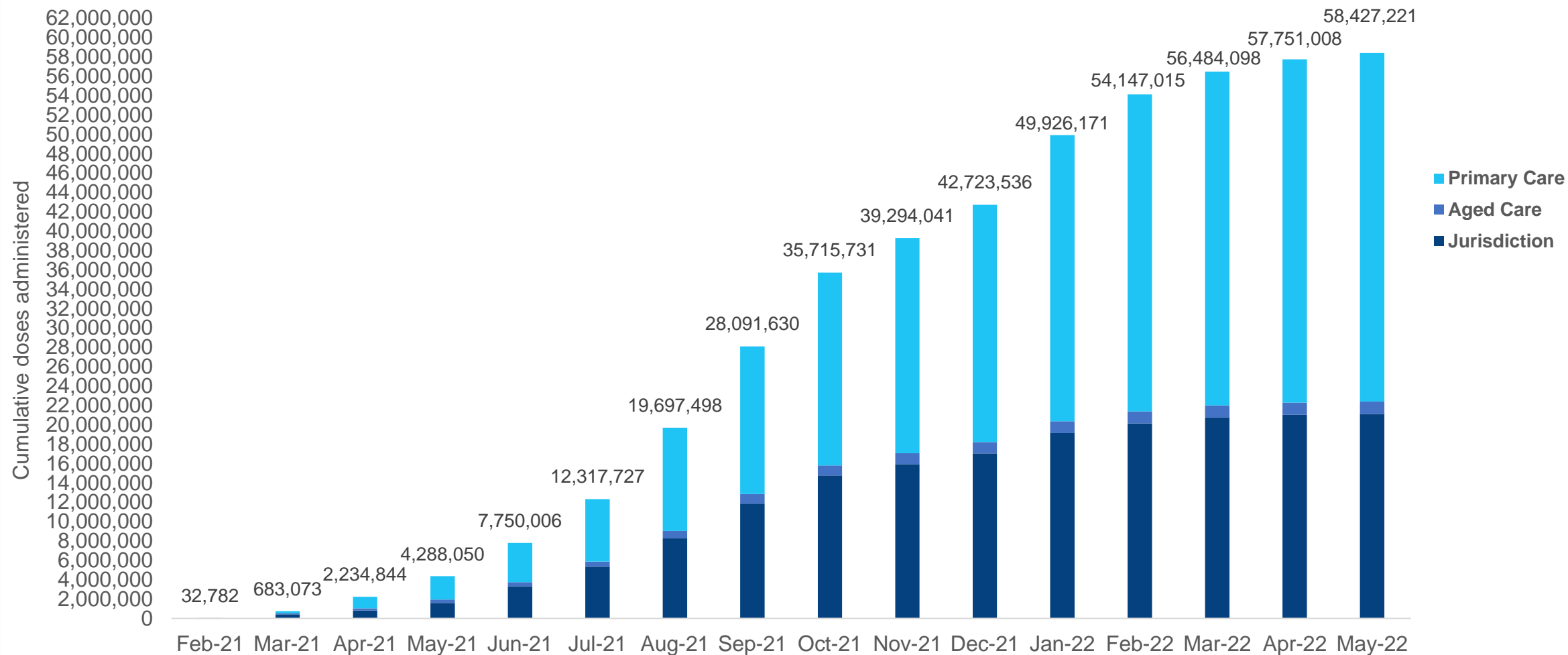
NT
342,763
(<10 daily
increase)

*Sourced from the Australian Immunisation Register. Numbers are calculated as difference in daily cumulative reported numbers to allow for historical corrections.

Source: Australian Immunisation Register

Cumulative doses administered by channel

Data as at:
15 May 2022



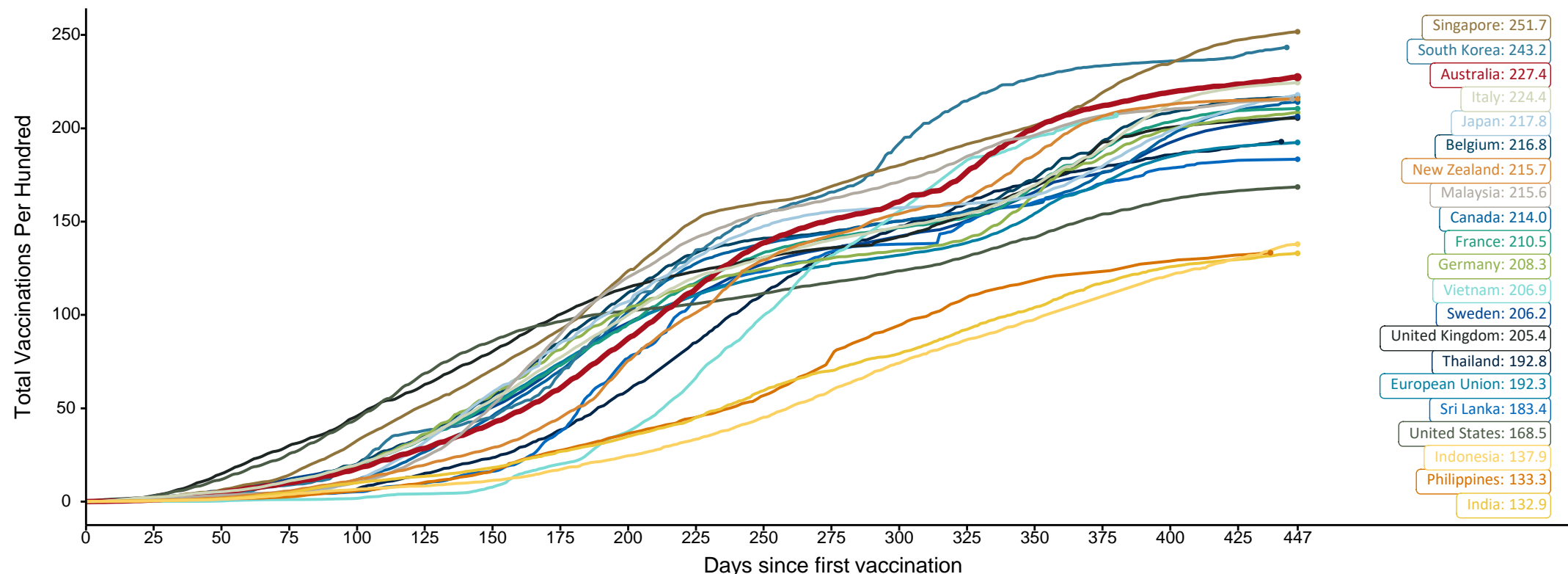
Source: Australian Immunisation Register

Doses at equivalent stages of rollout (Day 447)

Data as at:
15 May 2022
Updated Weekly

The x-axis is truncated at the length of Australia's vaccination program. Countries with intermittent reporting have had their doses per 100 imputed to Australia's current stage of rollout. Israel excluded as it is beyond scale of the graph

Cumulative doses administered (15 May): **58,427,221**

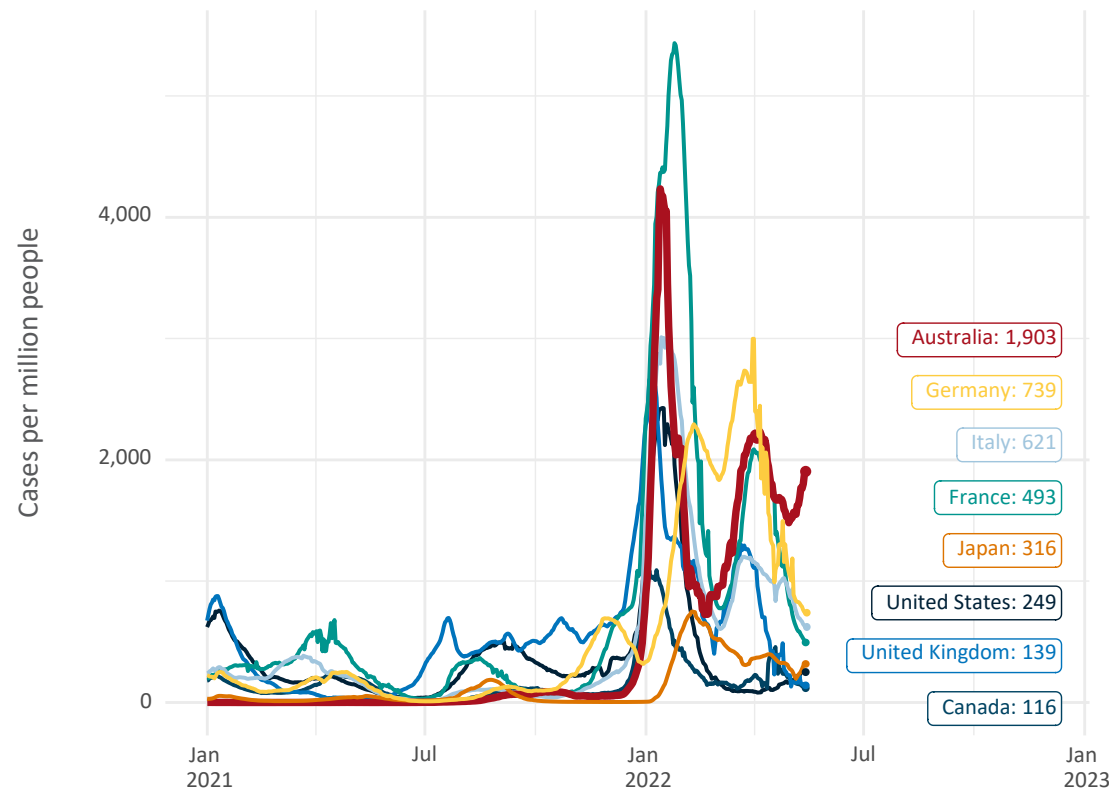


Note: From 11 January 2022, data for Australia includes all doses administered to people 5 and over. Prior to 11 January, data was for 12 and over.
Source: Department of Health (Australia), Our World in Data (international)
Latest data: 15 May

International data – COVID-19

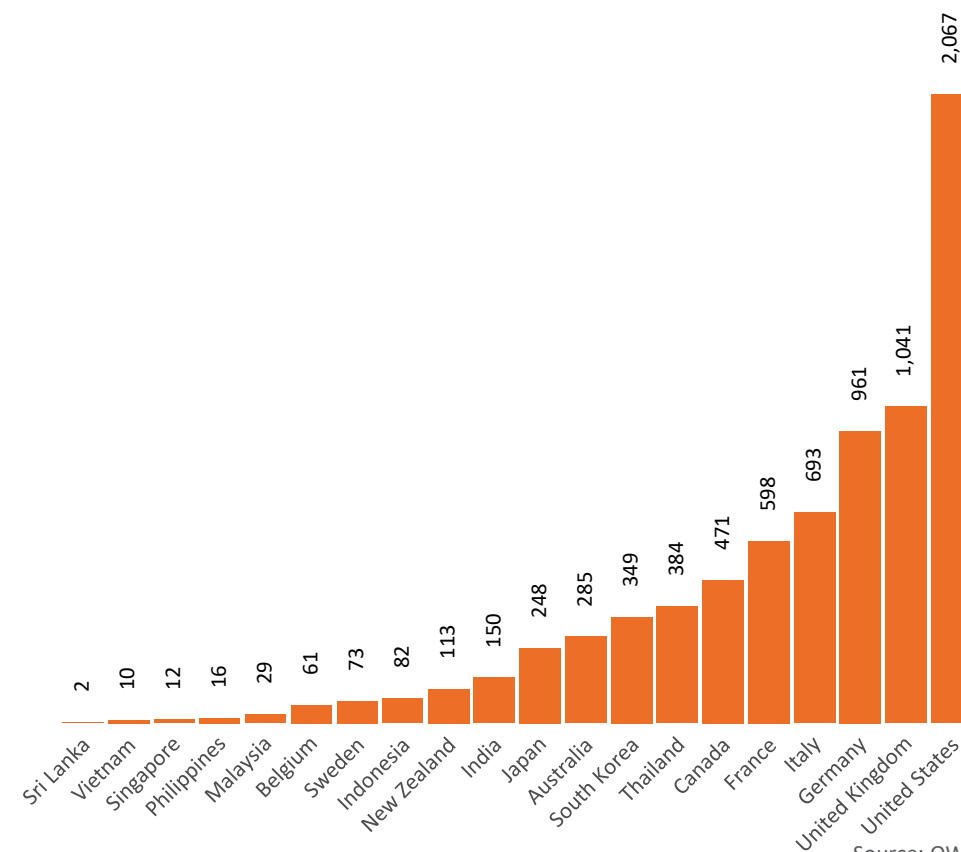
Data as at:
15 May 2022
Updated Weekly

New daily cases per million since 2021, Australia and G7 countries
Smoothed - 7 day average



Source: OWID
Data downloaded: 16 May 2022 11:47
Latest data: 15 May 2022

COVID-19 deaths in past 7 days - Australia and select countries



Source: OWID
Data downloaded: 16 May 2022 11:47
Latest data: 15 May 2022

Pandemic Response Payments

Australia's COVID-19
Vaccine Roadmap

Data as at midnight:
15 May 2022 (updated weekly)

2.38 million

People have received at least one
COVID Disaster Payment
(including ISP200)

8.04 million

Claims granted across
three different payments

\$14.48 billion

Paid Out as at 15 May 2022

Claims Received Digitally

93%

Three payments available:

COVID Disaster Payment

assisting during a lockdown event
in a Commonwealth hotspot.

Income Support Payment \$200

for income support recipients who
lost at least 8 hours of work.

Pandemic Leave Disaster

for those who have to self-isolate,
quarantine or care.

For more information visit:

www.servicesaustralia.gov.au

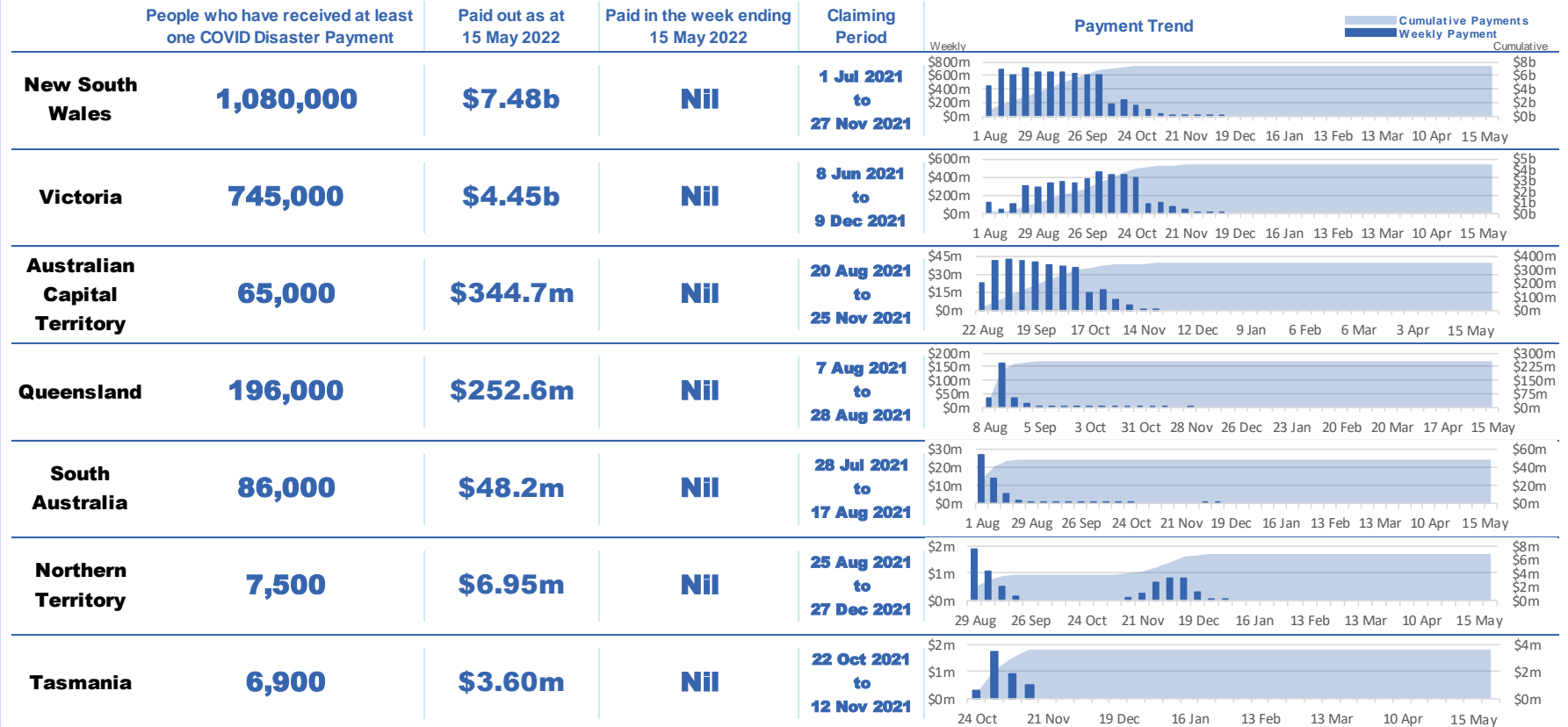


COVID Disaster Payment: 5.89 million claims received - 2.19 million individuals paid a total of \$12.59 billion.

\$200 Income Support Payment: 353,000 claims received - 183,000 individuals paid a total of \$268.92 million.

Pandemic Leave Disaster Payment: 2.31 million claims received - 1.38 million individuals paid a total of \$1.61 billion.

COVID-19 DISASTER PAYMENTS



Administration and Utilisation

Doses as at 15 May 2022

	Ordered	Available	Administered	Stock on Hand at Sites	Estimated Dose Utilisation %
	Up to 15/05/22	Delivered up to 08/05/22 including redistributions	Up to 15/05/22		(see note)
NSW	6,112,072	6,111,872	5,095,788	404,897	93%
VIC	6,997,554	6,995,954	6,076,956	282,426	97%
QLD	4,847,202	4,805,542	3,811,375	513,749	89%
WA	2,666,918	2,663,158	2,532,134	55,666	Fully utilised
SA	2,151,220	2,122,220	1,815,248	101,998	96%
TAS	656,290	656,290	622,320	1,653	Fully utilised
NT	418,834	405,906	369,528	16,806	Fully utilised
ACT	651,386	651,386	787,070	7,480	Fully utilised
Jurisdiction delivered total	24,501,476	24,412,328	21,110,419	1,384,674	96%
Commonwealth Vaccination Providers	1,399,552	1,395,266	1,284,279	6,894	Fully utilised
Commonwealth Primary Care & Other	55,602,422	55,074,520	36,032,523	13,585,491	75%
Total	81,503,450	80,882,114	58,427,221	14,977,059	82%

About this data

- Ordered – Total doses delivered to sites. Based on logistics provider data. This figure includes doses allocated for administration in the coming week.
- Available – total doses that could have been administered to date, less doses re-distributed from States & Territories to Primary Care or Commonwealth Vaccination Providers (i.e., does not include those deliveries recently received, and intended for use in the coming week).
- Administered – Doses administered as at 15 May 2022.
- Stock on Hand at Sites – Available doses minus Administered doses and a small % wastage.
- The dose utilisation is calculated based on the total doses administered and a small % wastage in line with international standards in relation to total available doses.
- For Commonwealth Vaccination Providers, the doses available for administration is for the full period (up to 15 May 2022).
- Commonwealth Vaccination Providers utilisation is not provided as the in-reach rollout is demand-based.