



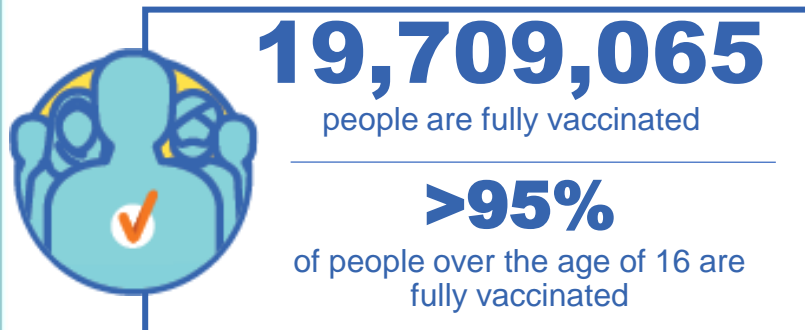
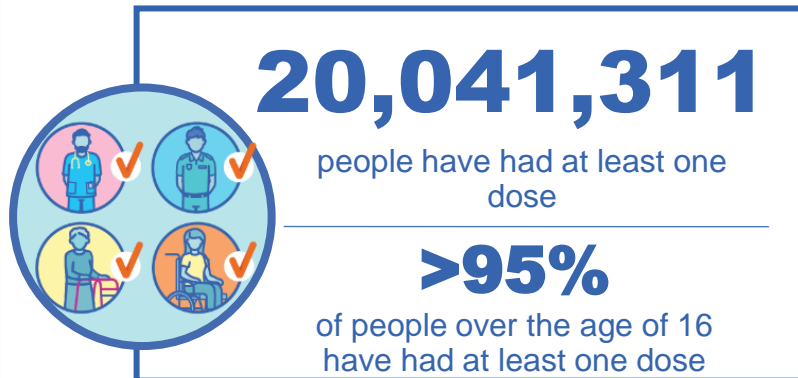
**Australian Government**  
**Operation COVID Shield**

# COVID-19 Vaccine Roll-out

14 May 2022

Data as at:  
13 May 2022

## Total vaccine doses



**58,396,952** total vaccine  
doses administered nationally as at 13 May

**+61,952** recorded in the last 24 hours



\*Administration state breakdown indicates state in which a vaccine was administered

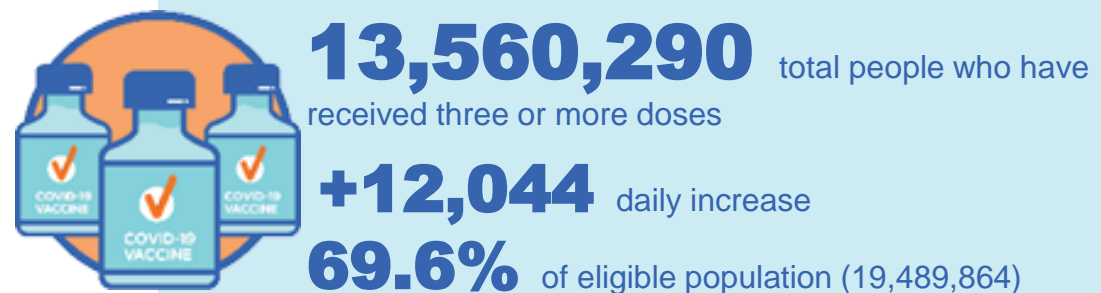
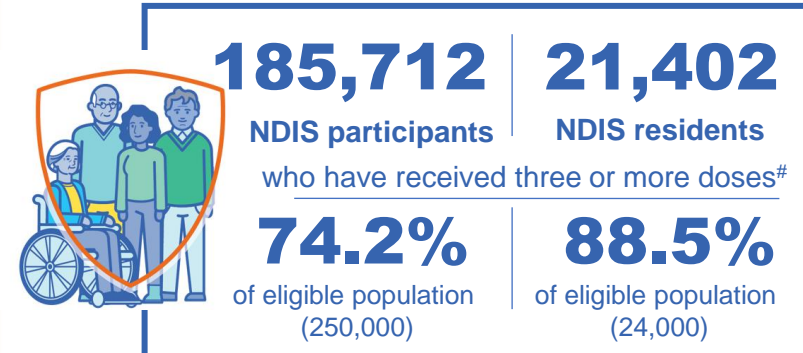
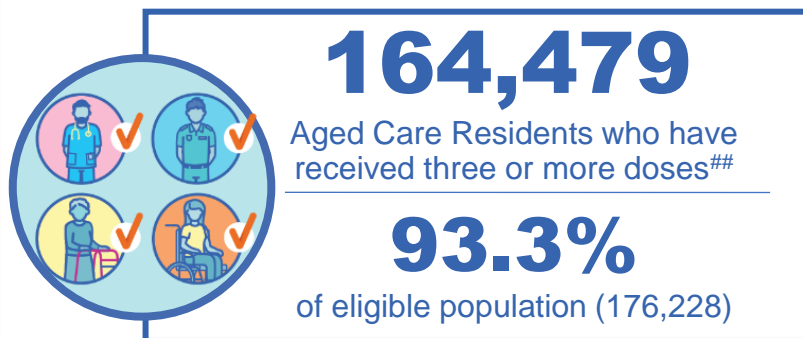
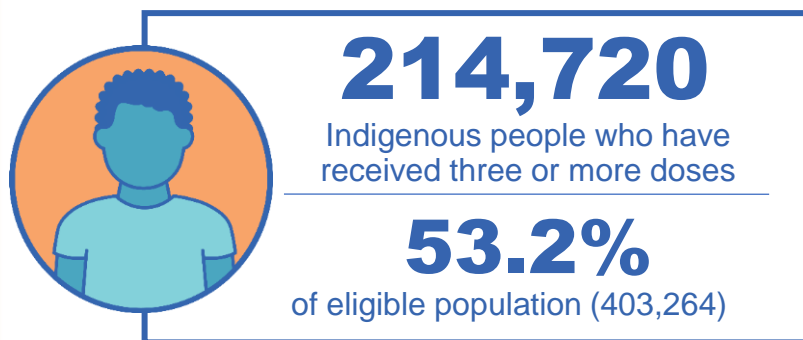
\*\*Overall dose count includes instances of more than three doses per person in a small number of cases.

Source: Australian Immunisation Register

# Booster Vaccinations

Australia's COVID-19  
Vaccine Roadmap

Data as at:  
13 May 2022



	Number of People	Daily Increase	% of Eligible
NSW	4,140,067	3,546	66.8%
VIC	3,625,209	2,490	71.7%
QLD	2,347,029	1,934	62.8%
WA	1,665,061	1,905	83.5%
SA	961,917	1,069	72.8%
TAS	309,870	265	72.2%
ACT	268,732	562	77.8%
NT	127,407	202	76.6%

\*People may belong to multiple groups and could be represented in the above breakdowns multiple times.  
# NDIS participants data as at 12 May 2022. ## Aged Care Residents data as at 13 May 2022.

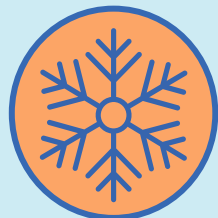
Source: Australian Immunisation Register

**114,998** doses administered to persons  
residing in other territories or with  
missing residential information

# Winter / Fourth Doses

Data as at:  
08 May 2022  
Updated weekly

Australia's COVID-19  
Vaccine Roadmap



**706,824** total people (16+) who have received four or more doses

**+205,900** weekly increase

	Number of People 16+	Weekly Increase
ACT	17,594	4,202
NSW	237,153	66,167
NT	3,709	736
QLD	134,109	37,573
SA	53,576	18,291
TAS	19,557	5,537
VIC	177,735	52,084
WA	60,027	20,401

**3,364** doses administered to persons  
residing in other territories or with  
missing residential information

Source: Australian Immunisation Register

# Vaccinations by residential location

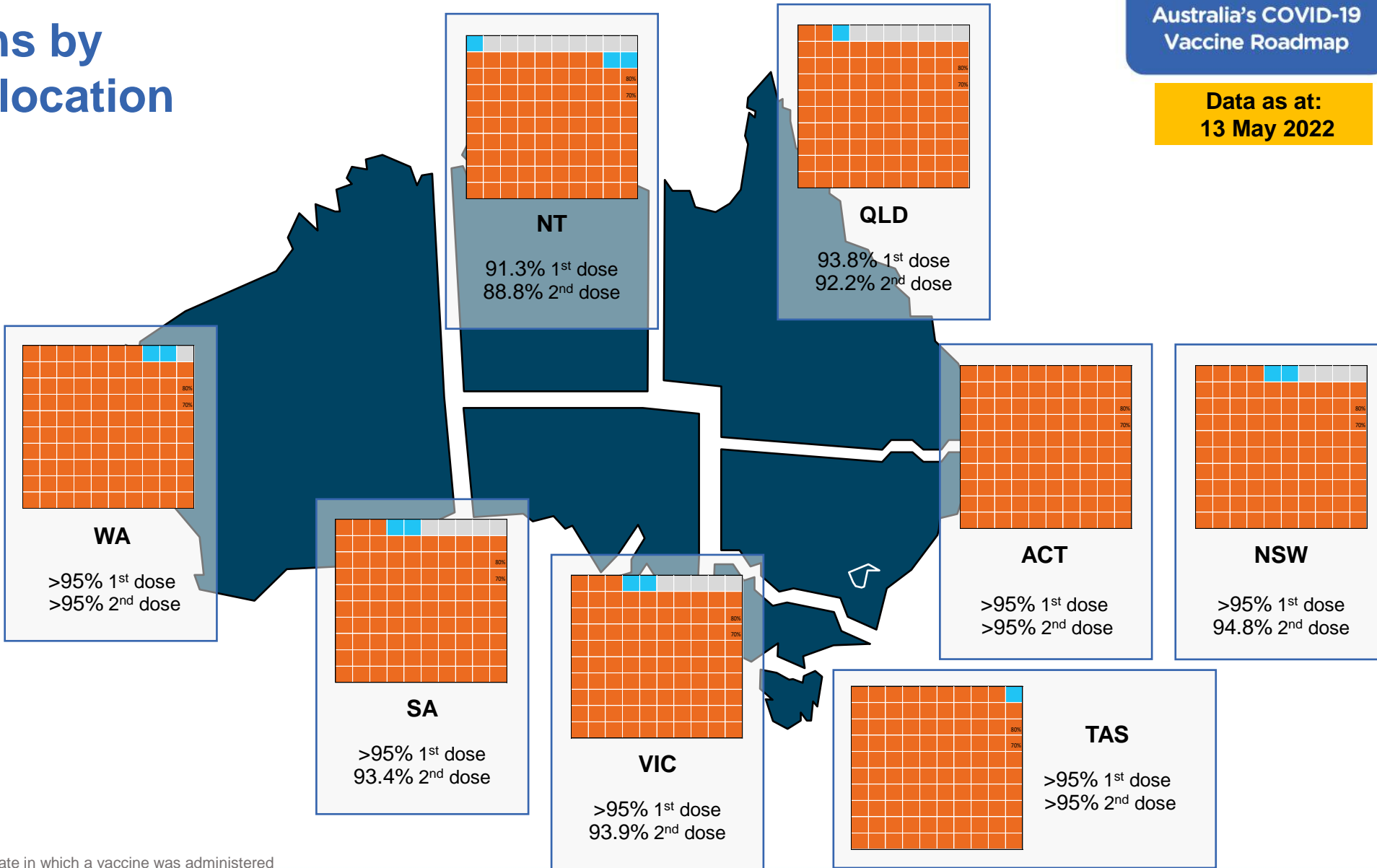
Data as at: 13 May 2022

## First doses

Age	Today	4 weeks ago	8 weeks ago
16+	>95%	>95%	>95%
50+	>95%	>95%	>95%
70+	>95%	>95%	>95%

## Fully vaccinated

Age	Today	4 weeks ago	8 weeks ago
16+	>95%	>95%	>95%
50+	>95%	>95%	>95%
70+	>95%	>95%	>95%



\*Residential state may differ from the state in which a vaccine was administered

# Commonwealth and Jurisdiction vaccine doses administered

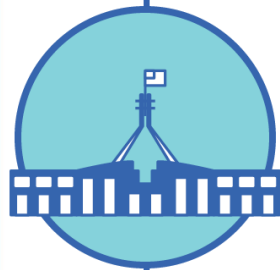
Data as at:  
13 May 2022



**58,396,952** total vaccine  
doses administered nationally as at 13 May  
**+ 61,952** recorded in the last 24 hours



**21,103,651**  
doses administered by state  
and territory facilities  
**+ 7,736**  
recorded in the last 24 hours



**37,293,301**  
doses administered by  
commonwealth facilities  
**+ 54,216**  
recorded in the last 24 hours

**36,009,349** total vaccine doses  
administered in primary care settings  
**1,283,952** total vaccine doses  
administered in aged care and disability  
settings

NSW	Jurisdictions	Commonwealth
Cumulative	5,112,682	13,001,703
Daily increase	1,093	17,551

VIC	Jurisdictions	Commonwealth
Cumulative	6,078,562	9,267,607
Daily increase	1,708	13,263

QLD	Jurisdictions	Commonwealth
Cumulative	3,843,985	7,202,510
Daily increase	558	10,142

WA	Jurisdictions	Commonwealth
Cumulative	2,503,865	3,922,272
Daily increase	1,035	6,396

TAS	Jurisdictions	Commonwealth
Cumulative	621,954	696,381
Daily increase	200	1,361

SA	Jurisdictions	Commonwealth
Cumulative	1,814,074	2,222,772
Daily increase	1,147	4,238

ACT	Jurisdictions	Commonwealth
Cumulative	785,875	740,574
Daily increase	1,796	1,012

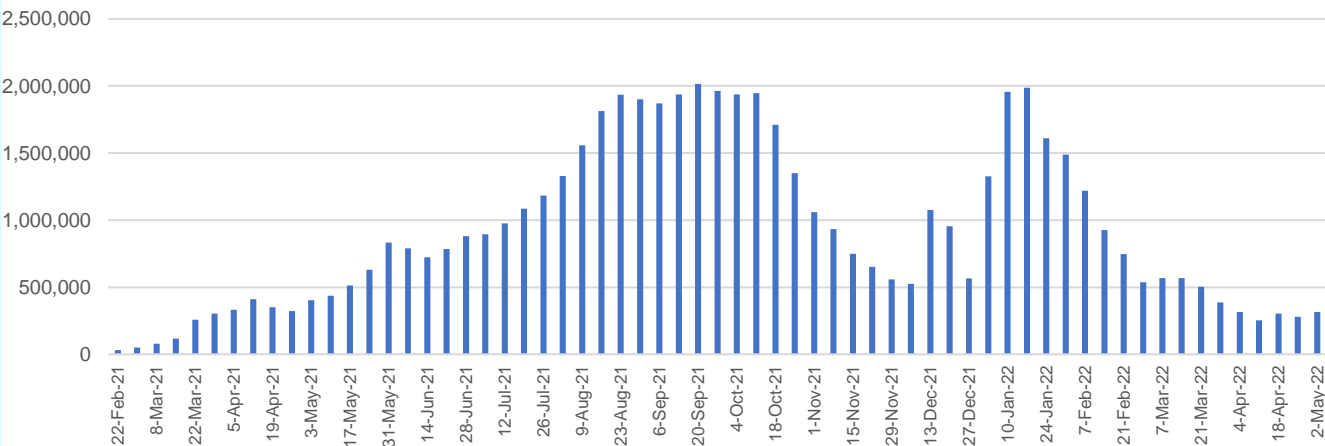
NT	Jurisdictions	Commonwealth
Cumulative	342,654	239,482
Daily increase	199	253

# Vaccine milestone charts

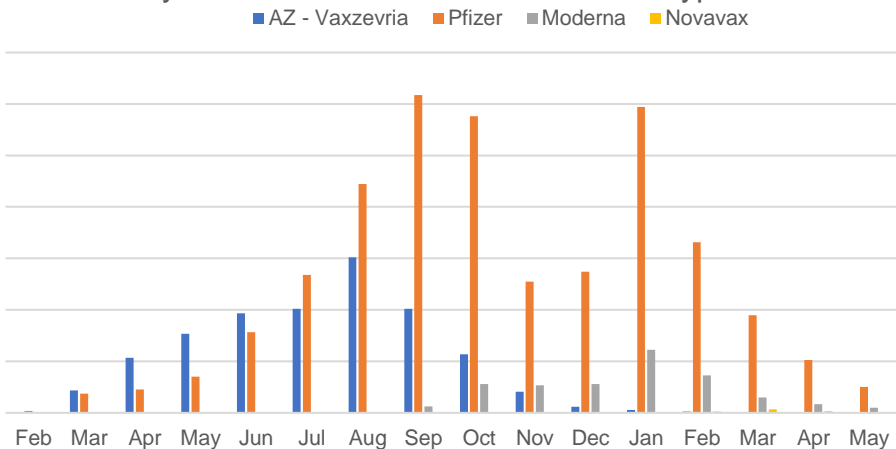
Data as at:  
13 May 2022

Australia's COVID-19  
Vaccine Roadmap

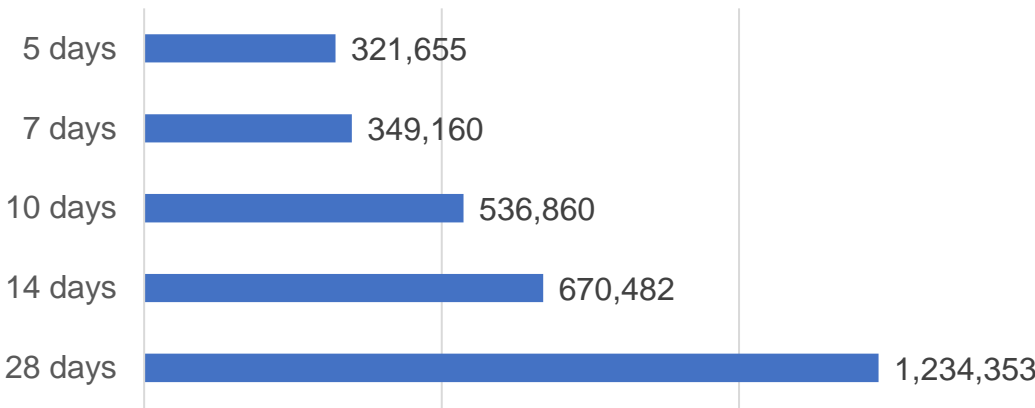
Doses Administered by Week



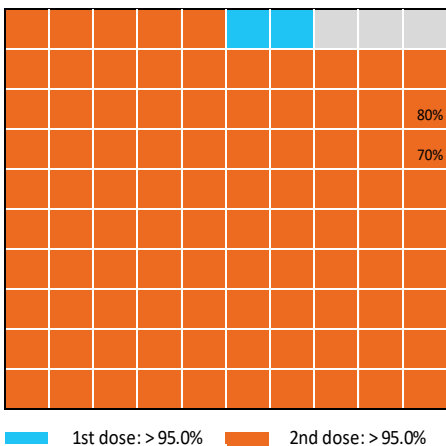
Doses by administration month and vaccine type



Doses Reported



Eligible population percentage coverage



\*Each square represents 1% of the national population.  
Squares are filled as milestones are achieved.

\*Sourced from the Australian Immunisation Register.

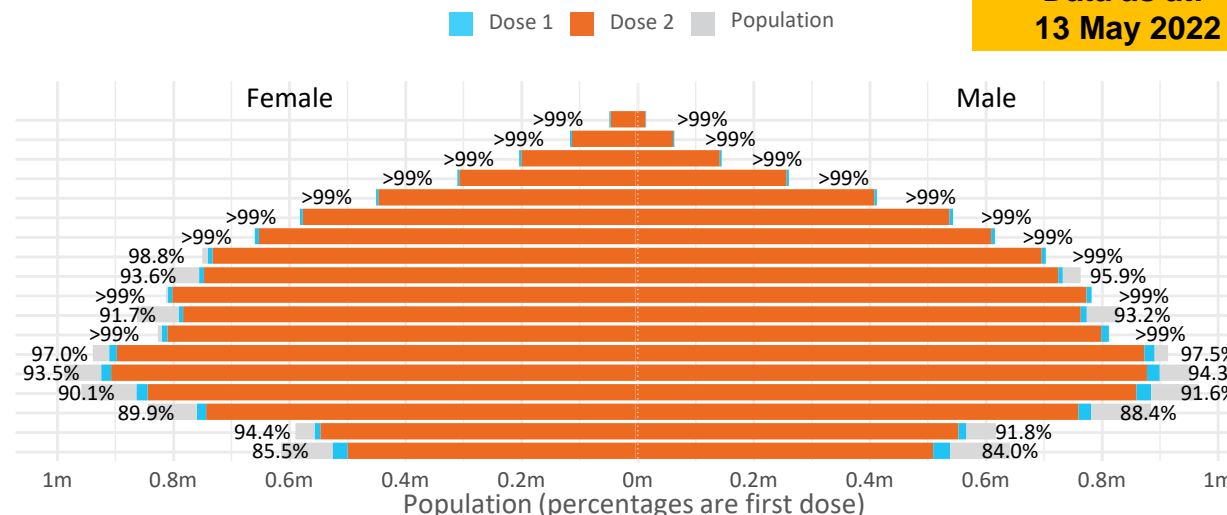
# Doses by age and sex

First and second doses by age and sex

	16+	50+	12-15	5-11
Dose 1	97.19% (20,041,311 doses / 20,619,959 people)	>99% (8,876,659 doses / 8,749,703 people)	84.77% (1,054,502 doses / 1,243,990 people)	52.78% (1,201,498 doses / 2,276,638 people)
Dose 2	95.58% (19,709,065 doses / 20,619,959 people)	>99% (8,770,254 doses / 8,749,703 people)	80.35% (999,589 doses / 1,243,990 people)	37.89% (862,730 doses / 2,276,638 people)

Data as at:  
13 May 2022

Age	Dose 1	Dose 2
95+	62,890 (>99%)	59,493 (>99%)
90-94	178,487 (>99%)	172,894 (>99%)
85-89	345,953 (>99%)	339,014 (>99%)
80-84	566,168 (>99%)	558,904 (>99%)
75-79	855,642 (>99%)	847,295 (>99%)
70-74	1,115,601 (>99%)	1,104,526 (>99%)
65-69	1,265,295 (>99%)	1,251,016 (>99%)
60-64	1,432,436 (>99%)	1,416,291 (98.6%)
55-59	1,475,706 (94.9%)	1,459,242 (93.8%)
50-54	1,578,481 (>99%)	1,561,579 (>99%)
45-49	1,551,802 (92.6%)	1,533,373 (91.5%)
40-44	1,619,271 (>99%)	1,595,316 (98.5%)
35-39	1,788,995 (97.5%)	1,757,161 (95.8%)
30-34	1,815,455 (94.4%)	1,774,105 (92.2%)
25-29	1,742,767 (91.4%)	1,695,537 (88.9%)
20-24	1,532,842 (89.5%)	1,493,669 (87.2%)
16-19	1,113,520 (93.1%)	1,089,650 (91.1%)
12-15	1,054,502 (84.8%)	999,589 (80.4%)



	AUS	ACT	NSW	NT	QLD	SA	TAS	VIC	WA
16 and over - dose 1	20,041,311	352,447	6,322,916	173,936	3,857,491	1,374,055	444,668	5,156,855	2,093,557
16 and over - dose 2	19,709,065	346,894	6,227,139	169,227	3,793,765	1,344,715	435,591	5,080,286	2,062,338
16 and over - population	20,619,959*	344,037	6,565,651	190,571	4,112,707	1,440,400	440,172	5,407,574	2,114,978
16 and over % with dose 1	97.19%	>99%	96.30%	91.27%	93.79%	95.39%	>99%	95.36%	98.99%
16 and over % with dose 2	95.58%	>99%	94.84%	88.80%	92.24%	93.36%	98.96%	93.95%	97.51%
5 to 11 - dose 1	1,201,498	31,940	358,455	13,250	208,723	84,214	28,695	326,807	141,575
5 to 11 - dose 2	862,730	26,555	261,543	8,206	144,887	60,873	22,665	236,221	97,338
5 to 11 - population	2,276,638	39,789	716,460	24,750	478,731	148,816	45,033	578,499	244,154
5 to 11 % with dose 1	52.78%	80.27%	50.03%	53.54%	43.60%	56.59%	63.72%	56.49%	57.99%
5 to 11 % with dose 2	37.89%	66.74%	36.50%	33.16%	30.26%	40.90%	50.33%	40.83%	39.87%
12 to 15 - dose 1	1,054,502	20,091	324,307	10,834	206,856	68,466	22,953	275,486	115,939
12 to 15 - dose 2	999,589	19,566	310,121	9,761	193,776	64,842	21,856	263,835	107,474
12 to 15 - population	1,243,990	19,693	390,330	13,060	270,146	82,747	26,308	308,611	132,869
12 to 15 % with dose 1	84.77%	>99%	83.09%	82.96%	76.57%	82.74%	87.25%	89.27%	87.26%
12 to 15 % with dose 2	80.35%	>99%	79.45%	74.74%	71.73%	78.36%	83.08%	85.49%	80.89%

\*National population will not equal sum of listed jurisdictions due to a small number of people counted in national population residing in some 'other' territories. Sum of state doses will not add to national total as some records are unable to be geocoded to a State or Territory.  
Doses sourced from Australian Immunisation Register, population from ABS ERP June 2020

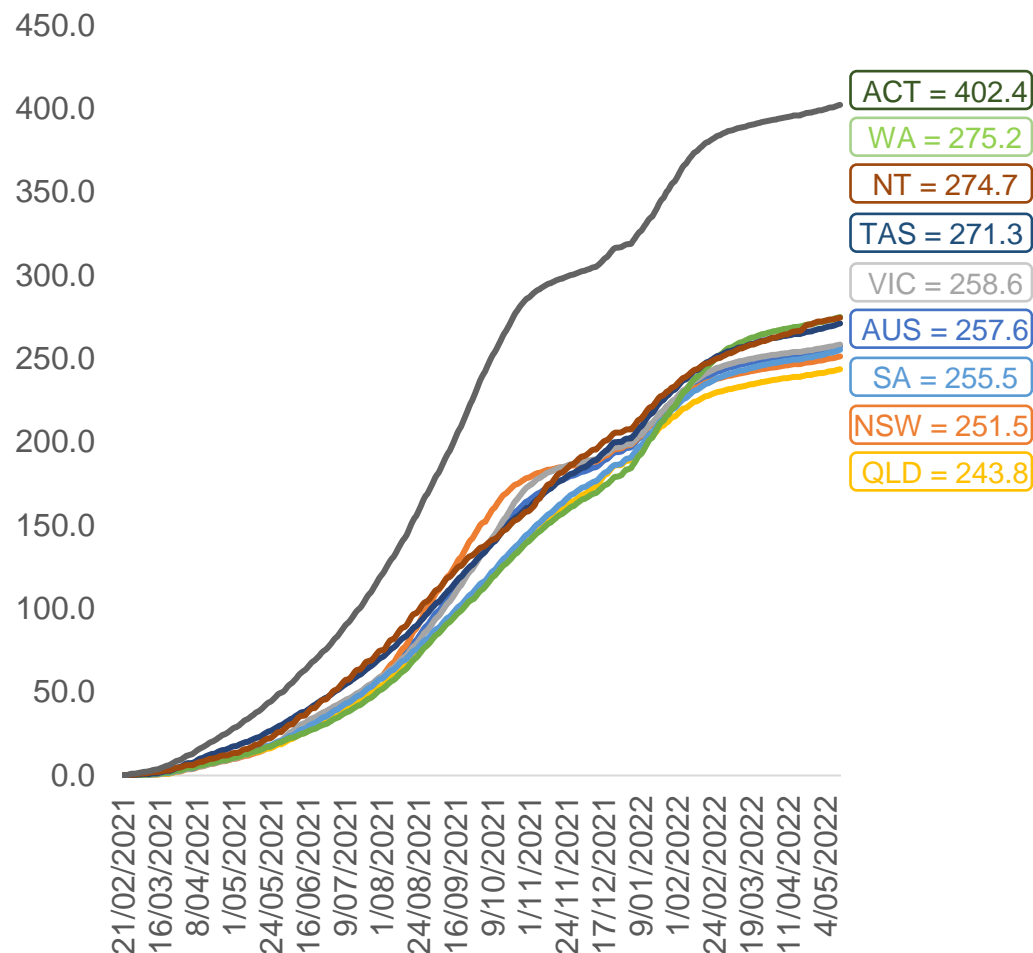


# Vaccinations by location

Data as at:  
13 May 2022

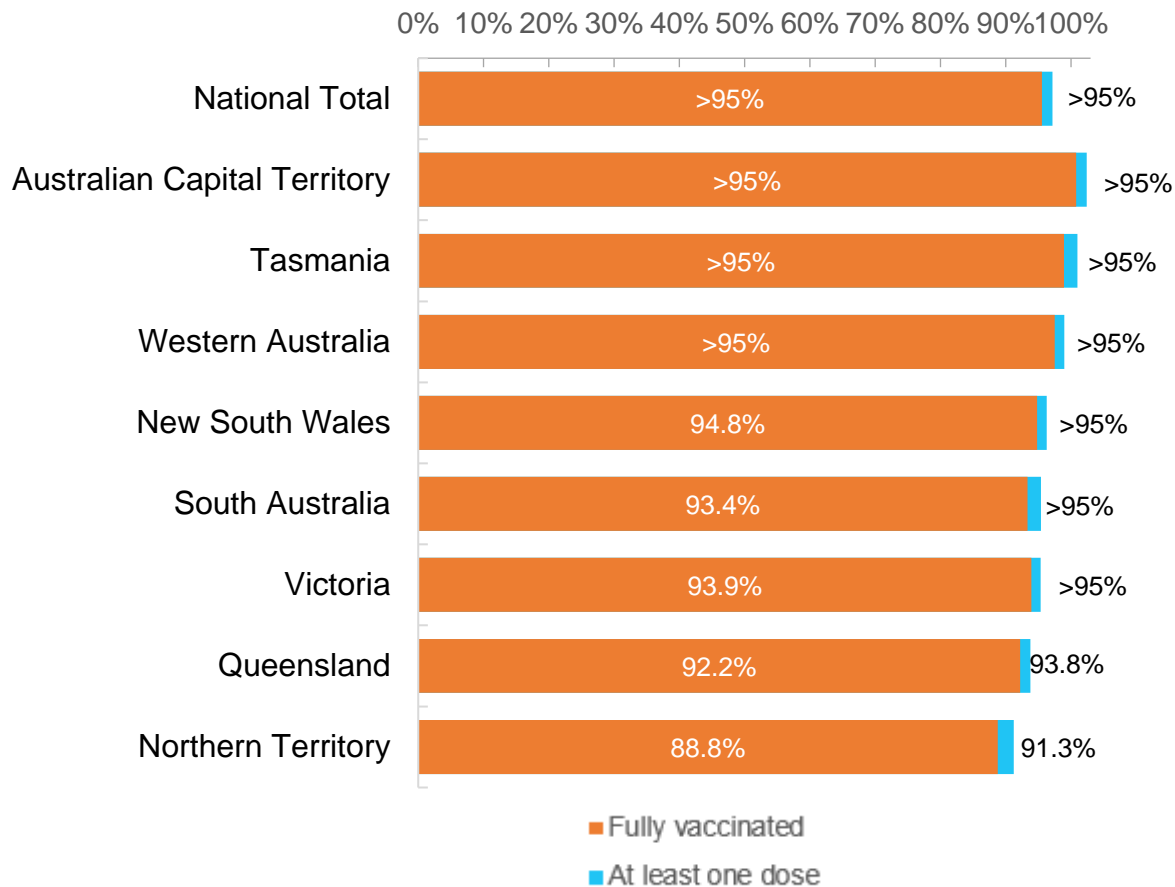
Australia's COVID-19  
Vaccine Roadmap

Cumulative total doses administered vs eligible state populations\*



\*Not an indication of percentage vaccinated, numbers will exceed 100 due to multiple doses required per person of the population.  
All doses are included for those aged 12 and above, and are based on vaccination provider location.

First and Second Doses by residential location



# Aboriginal and Torres Strait Islander peoples

## Number of people vaccinated

Data as at:  
10 May 2022  
Updated weekly

Australia's COVID-19  
Vaccine Roadmap



**440,767**

people over the age of 16  
have had at least one dose

**84.5%**

of people over the age of 16  
have had at least one dose



**421,727**

people over the age of 16  
are fully vaccinated

**80.9%**

of people over the age of 16 are  
fully vaccinated



People aged 12 – 15 years

**48,508**

**42,695**

**68.3%**

At least one dose

**60.1%**

Fully vaccinated

### 178 Aboriginal community controlled health services (ACCHS)

0#

50

27

44

12

3

21

21

**ACT**

**NSW**

**NT**

**QLD**

**SA**

**TAS**

**VIC**

**WA**

Medicare Address State <sup>##</sup>	Individuals Dose 1	Individuals Dose 1 %	Individuals Dose 2	Individuals Dose 2 %
Australian Capital Territory	4,786	91.0%	4,665	88.7%
New South Wales	135,454	86.8%	132,367	84.8%
Northern Territory	41,486	89.5%	39,363	85.0%
Queensland	115,805	81.4%	110,312	77.6%
South Australia	19,959	80.1%	18,535	74.4%
Tasmania	13,921	88.6%	13,514	86.0%
Victoria	35,552	89.8%	34,770	87.8%
Western Australia	53,597	86.3%	49,671	80.0%
Unknown/Other Territories	20,207	69.1%	18,530	63.4%
<b>Totals</b>	<b>440,767</b>	<b>84.5%</b>	<b>421,727</b>	<b>80.9%</b>

Source: Australian Immunisation Register

\*Identifying as Aboriginal and Torres Strait Islander is optional and the estimated population may be under reported.

\*\*Includes all Aboriginal and Torres Strait Islander peoples who have received a vaccination, not limited to those administered in an ACCHS setting

#ACCHS in the ACT are currently operating as a Commonwealth Vaccine Clinics so not included to avoid double counting

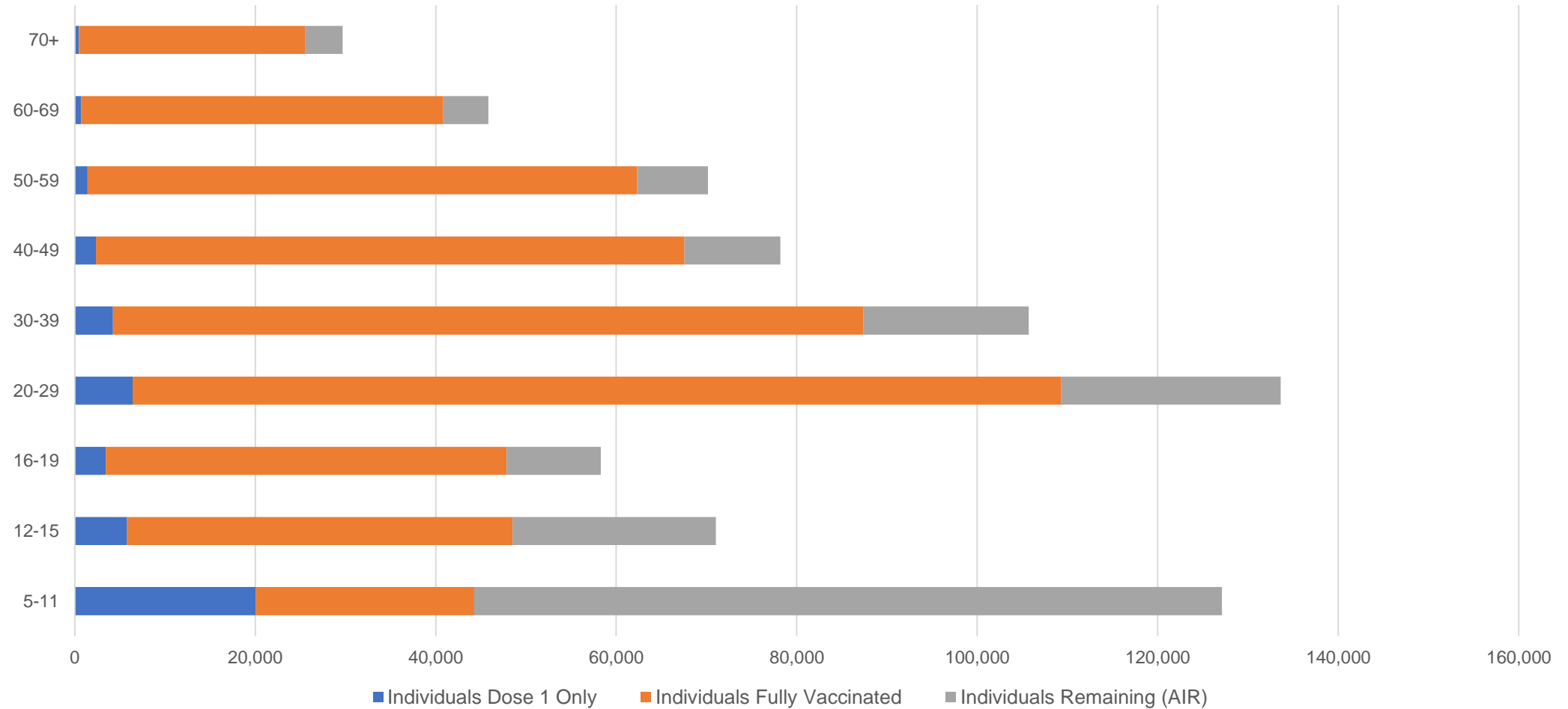
##The above table includes all identified Aboriginal and Torres Strait Islander people who are aged 16 and above by their state of residence.

# Aboriginal and Torres Strait Islander peoples

## Number of people vaccinated by age

Data as at:  
10 May 2022  
Updated weekly

Australia's COVID-19  
Vaccine Roadmap



Source: Australian Immunisation Register

# Commonwealth primary care

Data as at:  
13 May 2022

Australia's COVID-19  
Vaccine Roadmap



## Primary care vaccine administration sites

<b>5,724</b>	<b>128</b>	<b>178</b>	<b>3,595</b>
GPs	CVCs	ACCHS	Pharmacies



**36,009,349** total vaccine doses administered  
primary care settings as at 13 May  
**+ 53,182** recorded in the last 24 hours

## Primary care vaccinations by provider type

	Doses administered	Daily increase	7 day increase
General Practice* includes other Commonwealth	28,919,210	37,440	214,514
Pharmacy	7,090,139	15,742	88,341

**NSW**  
**12,441,802**  
(+17,283 daily increase)

**VIC**  
**8,947,024**  
(+12,861 daily increase)

**QLD**  
**6,923,455**  
(+10,125 daily increase)

**WA**  
**3,786,246**  
(+6,383 daily increase)

**TAS**  
**675,158**  
(+1,346 daily increase)

**SA**  
**2,142,458**  
(+4,157 daily increase)

**ACT**  
**568,225**  
(+881 daily increase)

**NT**  
**215,386**  
(+227 daily increase)

**309,595**

doses administered to persons  
residing in other territories or with  
missing residential information

\*General practice includes Commonwealth Vaccination Clinics, Aboriginal Community Health Centres, Royal Flying Doctor Service and other Commonwealth vaccination facilities

Source: Australian Immunisation Register

Data as at:  
13 May 2022

# Commonwealth aged care and disability doses administered



**1,283,952** (+ 1,034 last 24 hours)

Total vaccine doses administered in aged care and disability facilities as at 13 May

Number of doses administered as part of the Commonwealth aged and disability care rollout

**NSW**  
**561,811**  
(+258 daily increase)

**VIC**  
**238,948**  
(+431 daily increase)

**QLD**  
**204,078**  
(+80 daily increase)

**WA**  
**109,055**  
(+108 daily increase)

**TAS**  
**23,338**  
(<10 daily increase)

**SA**  
**84,520**  
(+95 daily increase)

**ACT**  
**17,592**  
(+18 daily increase)

**NT**  
**7,624**  
(+19 daily increase)

**36,986**

doses administered to persons  
residing in other territories or with  
missing residential information

\*Sourced from the Australian Immunisation Register. Includes all persons vaccinated at participating residential aged care, disability and related industry settings.

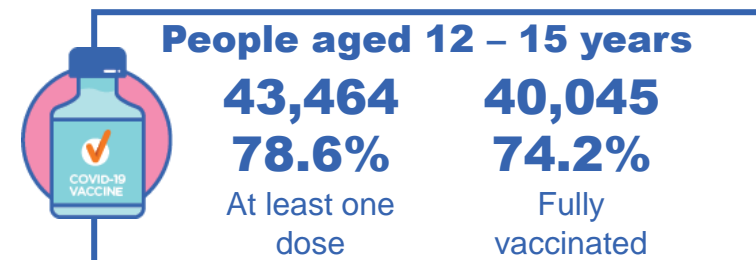
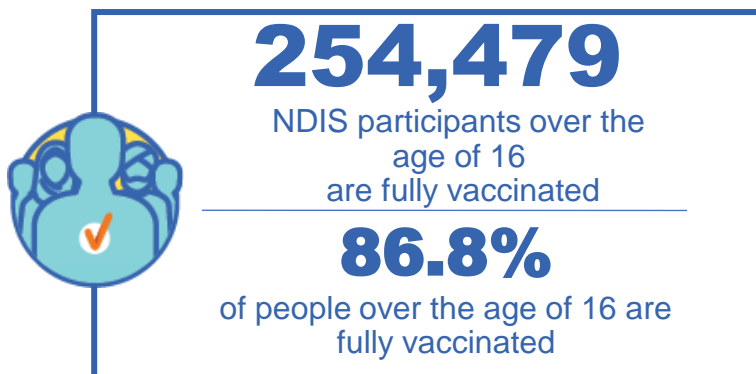
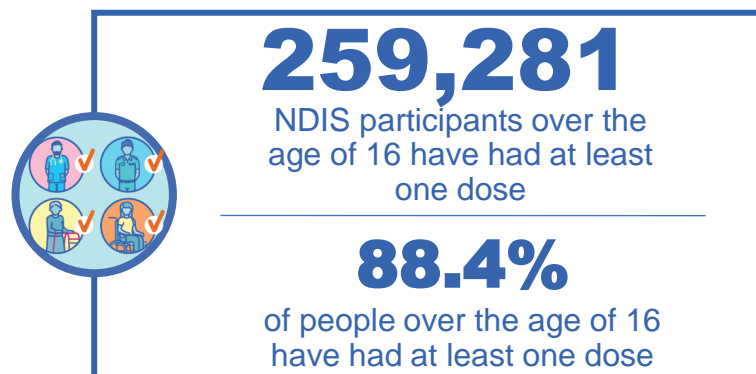
\*\*State level breakdown indicates the residential location and may not align to the state in which the vaccination occurred.

Source: Australian Immunisation Register

# National Disability Insurance Scheme (NDIS) reported vaccinations

Data as at:  
12 May 2022  
Updated weekly

Australia's COVID-19  
Vaccine Roadmap



## NDIS participant vaccinations

	People aged 16+ with at least one dose	People aged 16+ fully vaccinated	% People aged 16+ with at least one dose	% People aged 16+ fully vaccinated
ACT	4,897	4,832	90.3%	89.1%
NSW	79,544	78,246	88.7%	87.2%
NT	2,243	2,177	78.6%	76.3%
QLD	51,199	50,222	87.0%	85.4%
SA	21,182	20,663	86.3%	84.2%
TAS	6,496	6,344	88.4%	86.3%
VIC	68,955	67,767	89.5%	88.0%
WA	24,765	24,228	90.0%	88.0%
National	259,281	254,479	88.4%	86.8%

Source: Linkage between National Disability Insurance Agency data and the Australian Immunisation Register. Total NDIS participant numbers as at 28 February. Australian Immunisation Register data as at 11 May. Includes all participants regardless of residence type.

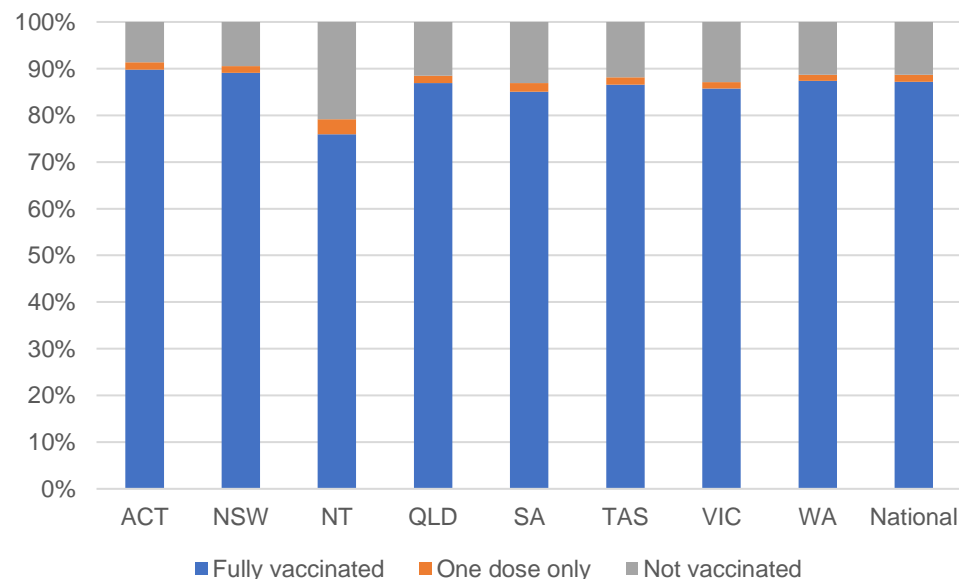
# National Disability Insurance Scheme (NDIS) reported vaccinations

Data as at:  
12 May 2022  
Updated Weekly

Australia's COVID-19  
Vaccine Roadmap

NATIONAL	Total people with at least one dose	People fully vaccinated	Total number of individuals in cohort	% People with at least one dose	% People fully vaccinated
NDIS participants living in disability accommodation	20,794	20,451	23,352	89.0%	87.6%

## NDIS participants in disability and aged care accommodation



Source: Linkage between National Disability Insurance Agency data and the Australian Immunisation Register. Includes participants residing in disability accommodation only.

Source: Total NDIS participant numbers as at 28 February. Participant data as at 11 May. Australian Immunisation Register data as at 11 May. Worker data as at 4 May.

## NDIS workforce vaccinations

	NDIS workers with at least one dose	NDIS workers fully vaccinated	% NDIS workers with at least one dose	% NDIS workers fully vaccinated
NSW	121,713	117,437	98.2%	94.8%
VIC	116,092	112,390	98.3%	95.2%
QLD	69,687	68,782	97.5%	96.3%
WA	32,669	31,051	97.8%	93.0%
SA	35,437	33,033	98.5%	91.8%
TAS	10,733	10,504	99.5%	97.4%
ACT	3,511	3,469	99.0%	97.8%
NT	3,442	3,293	99.4%	95.1%
<b>TOTAL</b>	<b>393,284</b>	<b>379,959</b>	<b>98.2%</b>	<b>94.8%</b>

Source: the NDIS Commission has established a requirement for registered NDIS providers who provide intensive disability support services to report on the vaccination status of workers they employ, or otherwise engage, to deliver NDIS-funded supports and services, and who are required to be vaccinated in accordance with in-force state and territory public health orders. The statistics reflect data reported to the NDIS Commission by registered NDIS providers and should be considered indicative and subject to change

Note: Some registered NDIS providers are yet to report on the vaccination status of their workforce. The NDIS Commission is working with those providers around reporting requirements.

Remaining workers not included include those exempt from vaccination requirements, workers whose vaccination status is not yet verified by the provider (such as workers on leave) and provider reporting anomalies.



# Residential aged care vaccination rollout

Residential aged care facilities status

**176,228**

People fully vaccinated

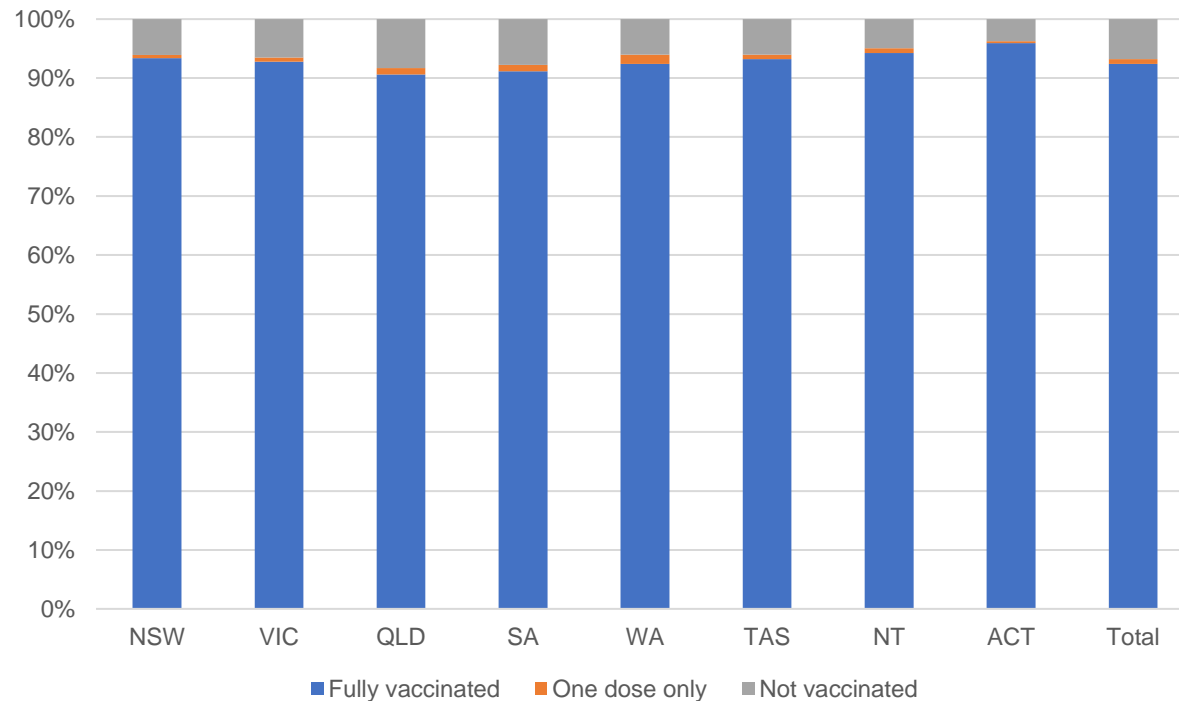
**177,805**

People with at least one dose

Australia's COVID-19 Vaccine Roadmap

Data as at:  
12 May 2022  
Updated weekly

## Aged care resident vaccinations



## Aged care worker vaccinations

Jurisdictions	Total workers with at least one dose	Workers fully vaccinated	% Workers with at least one dose	% Workers fully vaccinated
NSW	78,020	78,016	99.7%	99.7%
VIC	68,347	68,346	98.3%	98.3%
QLD	47,478	47,473	99.0%	99.0%
SA	26,895	26,879	98.5%	98.4%
WA	24,144	24,140	100.0%	99.9%
TAS	7,474	7,473	100.0%	100.0%
NT	898	898	100.0%	100.0%
ACT	2,854	2,854	96.7%	96.7%
Total	256,110	256,079	99.0%	99.0%

Source: My Aged Care Portal vaccination progress

\*Status updates are provided by facilities at least once per week. Reporting is updated Monday to Friday to encompass different facility updates being made on different days.

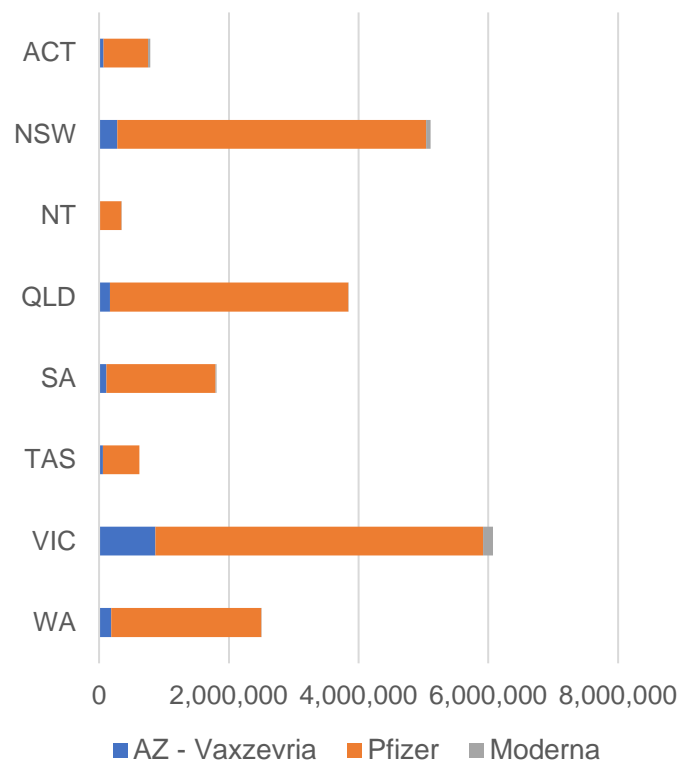
Data is sourced directly from Aged Care Service Providers and is not drawn or closely aligned with data from AIR due to inconsistencies and potential lags in uploading of records.



Data as at:  
13 May 2022

## Jurisdiction administered

Total vaccine doses administered in State and Territory clinics as at 13 May



**21,103,651** total vaccine doses administered  
in State and Territory clinics as at 13 May  
+ **7,736** recorded in the last 24 hours  
+ **41,528** recorded in the last 7 days

**NSW**  
**5,112,682**  
(+1,093 daily  
increase)

**VIC**  
**6,078,562**  
(+1,708 daily  
increase)

**QLD**  
**3,843,985**  
(+558 daily  
increase)

**WA**  
**2,503,865**  
(+1,035 daily  
increase)

**TAS**  
**621,954**  
(+200 daily  
increase)

**SA**  
**1,814,074**  
(+1,147 daily  
increase)

**ACT**  
**785,875**  
(+1,796 daily  
increase)

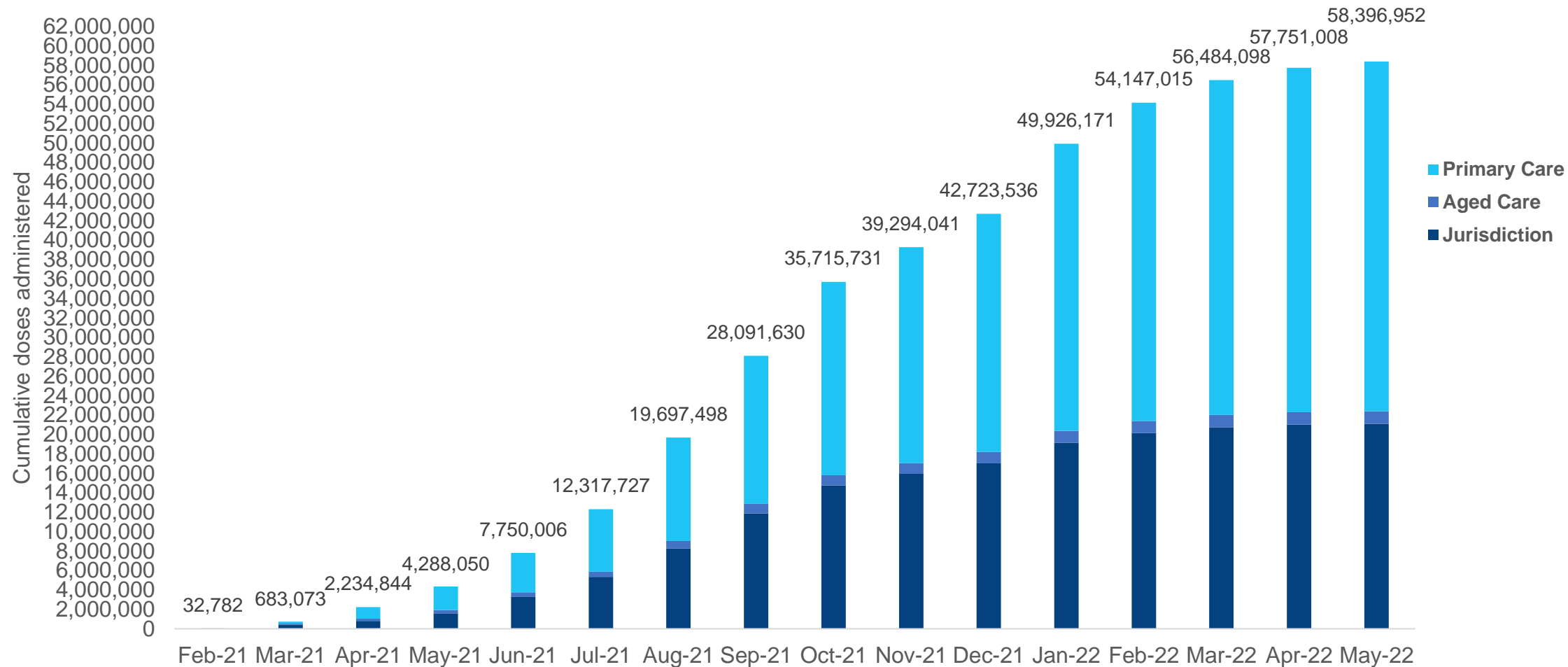
**NT**  
**342,654**  
(+199 daily  
increase)

\*Sourced from the Australian Immunisation Register. Numbers are calculated as difference in daily cumulative reported numbers to allow for historical corrections.

Source: Australian Immunisation Register

# Cumulative doses administered by channel

Data as at:  
13 May 2022



Source: Australian Immunisation Register

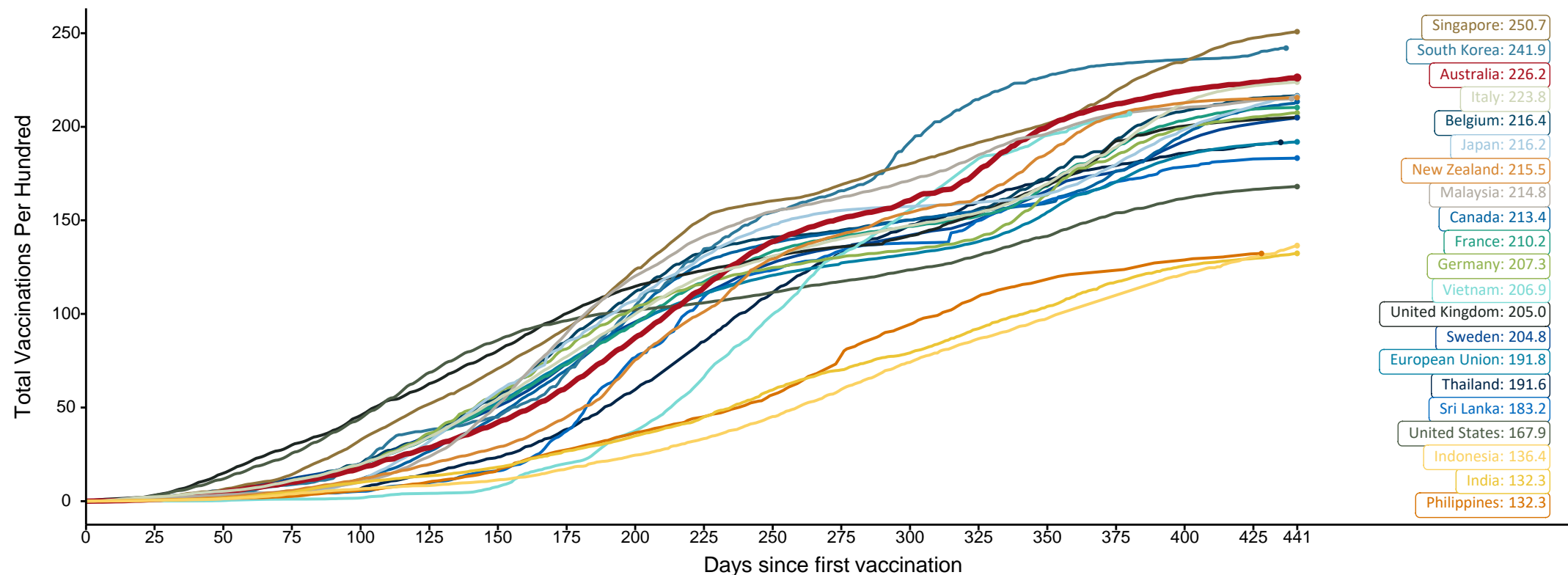
# Doses at equivalent stages of rollout (Day 441)

Data as at:  
09 May 2022  
Updated Weekly

Australia's COVID-19  
Vaccine Roadmap

The x-axis is truncated at the length of Australia's vaccination program. Countries with intermittent reporting have had their doses per 100 imputed to Australia's current stage of rollout. Israel excluded as it is beyond scale of the graph

Cumulative doses administered (09 May): **58,134,062**

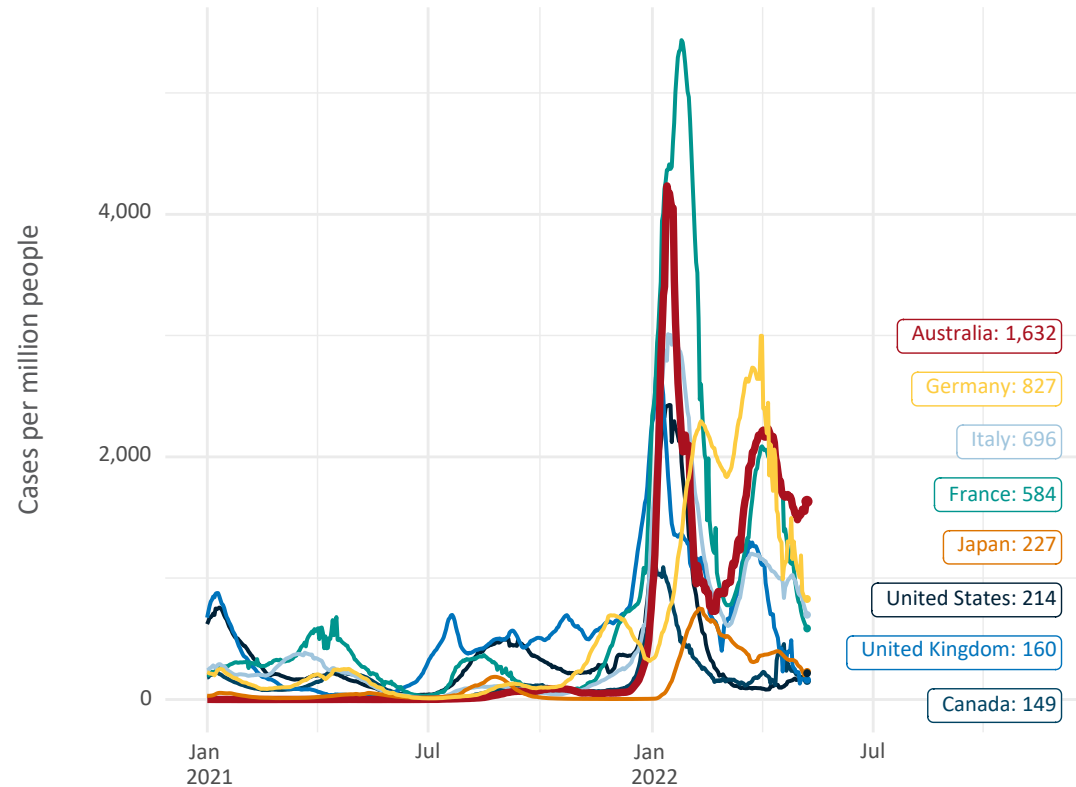


Note: From 11 January 2022, data for Australia includes all doses administered to people 5 and over. Prior to 11 January, data was for 12 and over.  
Source: Department of Health (Australia), Our World in Data (international)  
Latest data: 09 May

# International data – COVID-19

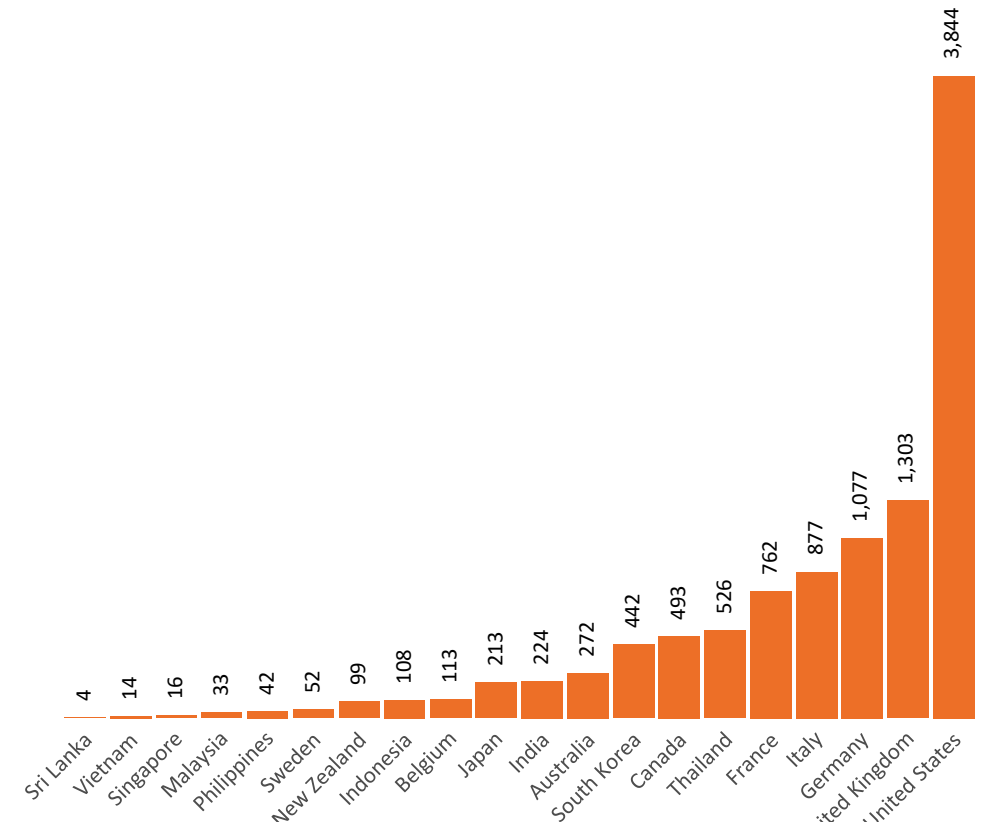
Data as at:  
09 May 2022  
Updated Weekly

New daily cases per million since 2021, Australia and G7 countries  
Smoothed - 7 day average



Source: OWID  
Data downloaded: 10 May 2022 09:56  
Latest data: 08 May 2022

COVID-19 deaths in past 7 days - Australia and select countries



Source: OWID  
Data downloaded: 10 May 2022 09:56  
Latest data: 08 May 2022

# Pandemic Response Payments

Australia's COVID-19  
Vaccine Roadmap

Data as at midnight:  
8 May 2022 (updated weekly)

**2.38 million**

People have received at least one  
COVID Disaster Payment  
(including ISP200)

**7.95 million**

Claims granted across  
three different payments

**\$14.42 billion**

Paid Out as at 8 May 2022

Claims Received Digitally

**93%**

Three payments available:

**COVID Disaster Payment**

assisting during a lockdown event  
in a Commonwealth hotspot.

**Income Support Payment \$200**

for income support recipients who  
lost at least 8 hours of work.

**Pandemic Leave Disaster**

for those who have to self-isolate,  
quarantine or care.

For more information visit:

[www.servicesaustralia.gov.au](http://www.servicesaustralia.gov.au)



**COVID Disaster Payment:** 5.89 million claims received - 2.19 million individuals paid a total of \$12.59 billion.

**\$200 Income Support Payment:** 353,000 claims received - 183,000 individuals paid a total of \$268.92 million.

**Pandemic Leave Disaster Payment:** 2.21 million claims received - 1.34 million individuals paid a total of \$1.55 billion.

## COVID-19 DISASTER PAYMENTS

