



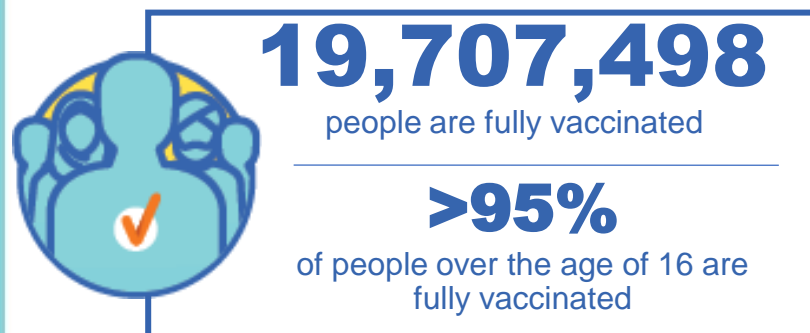
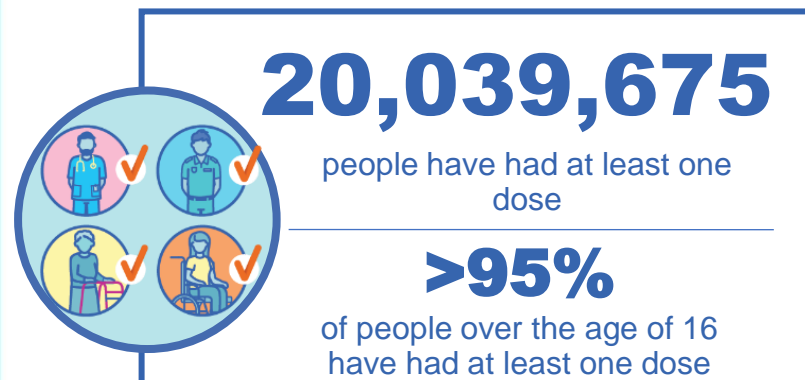
Australian Government
Operation COVID Shield

COVID-19 Vaccine Roll-out

13 May 2022

Data as at:
12 May 2022

Total vaccine doses



58,335,000 total vaccine
doses administered nationally as at 12 May

+68,188 recorded in the last 24 hours

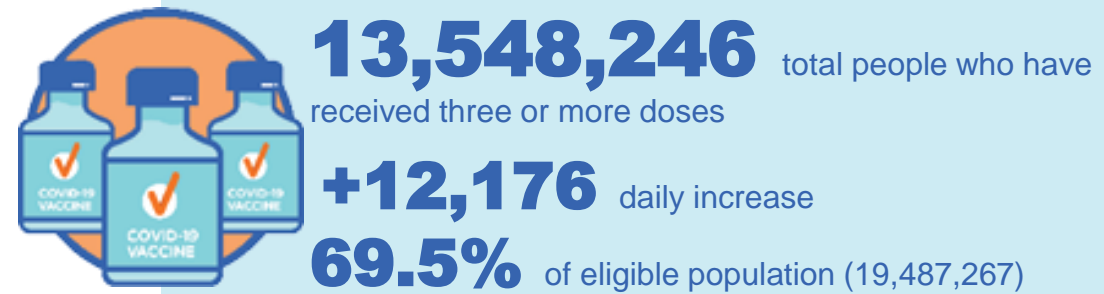
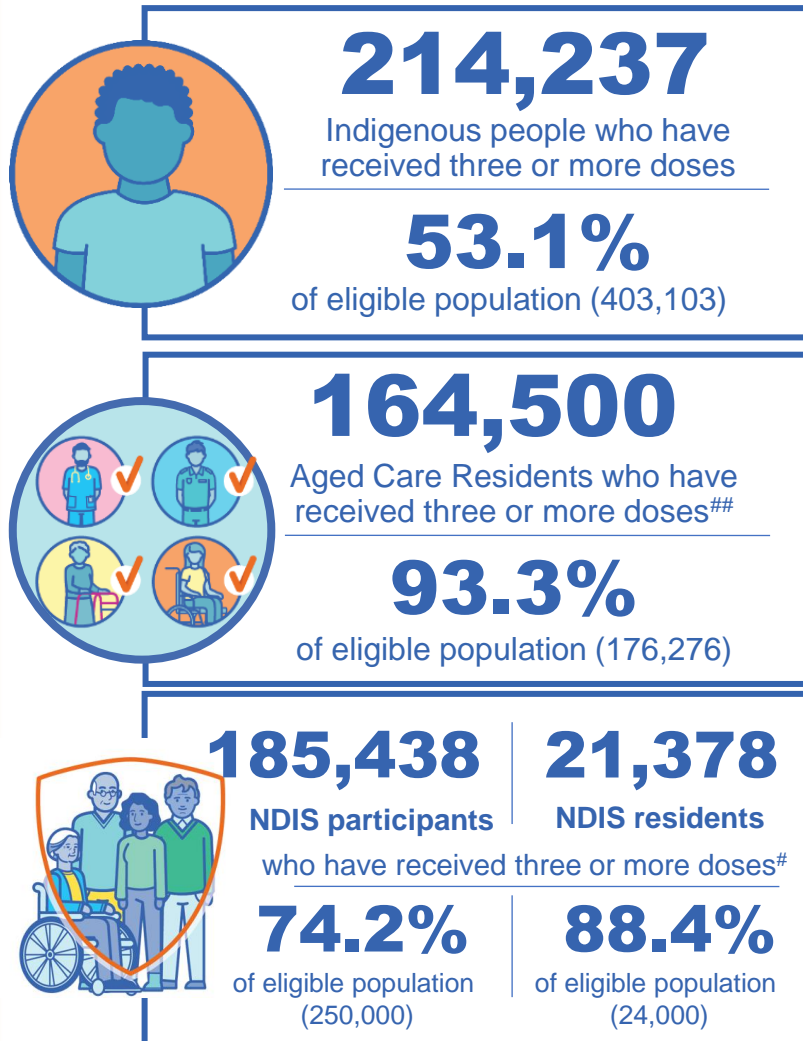


*Administration state breakdown indicates state in which a vaccine was administered

**Overall dose count includes instances of more than three doses per person in a small number of cases.

Source: Australian Immunisation Register

Booster Vaccinations



Data as at:
12 May 2022

	Number of People	Daily Increase	% of Eligible
NSW	4,136,521	3,339	66.7%
VIC	3,622,719	2,648	71.7%
QLD	2,345,095	2,285	62.7%
WA	1,663,156	2,059	83.5%
SA	960,848	1,079	72.7%
TAS	309,605	288	72.2%
ACT	268,170	141	77.6%
NT	127,205	235	76.4%

*People may belong to multiple groups and could be represented in the above breakdowns multiple times.
NDIS participants data as at 11 May 2022. ## Aged Care Residents data as at 12 May 2022.

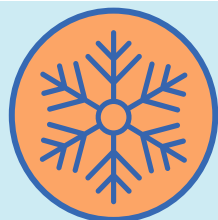
Source: Australian Immunisation Register

114,927 doses administered to persons residing in other territories or with missing residential information

Winter / Fourth Doses

Data as at:
08 May 2022
Updated weekly

Australia's COVID-19
Vaccine Roadmap



706,824 total people (16+) who have received four or more doses

+205,900 weekly increase

	Number of People 16+	Weekly Increase
ACT	17,594	4,202
NSW	237,153	66,167
NT	3,709	736
QLD	134,109	37,573
SA	53,576	18,291
TAS	19,557	5,537
VIC	177,735	52,084
WA	60,027	20,401

3,364 doses administered to persons
residing in other territories or with
missing residential information

Source: Australian Immunisation Register

Vaccinations by residential location

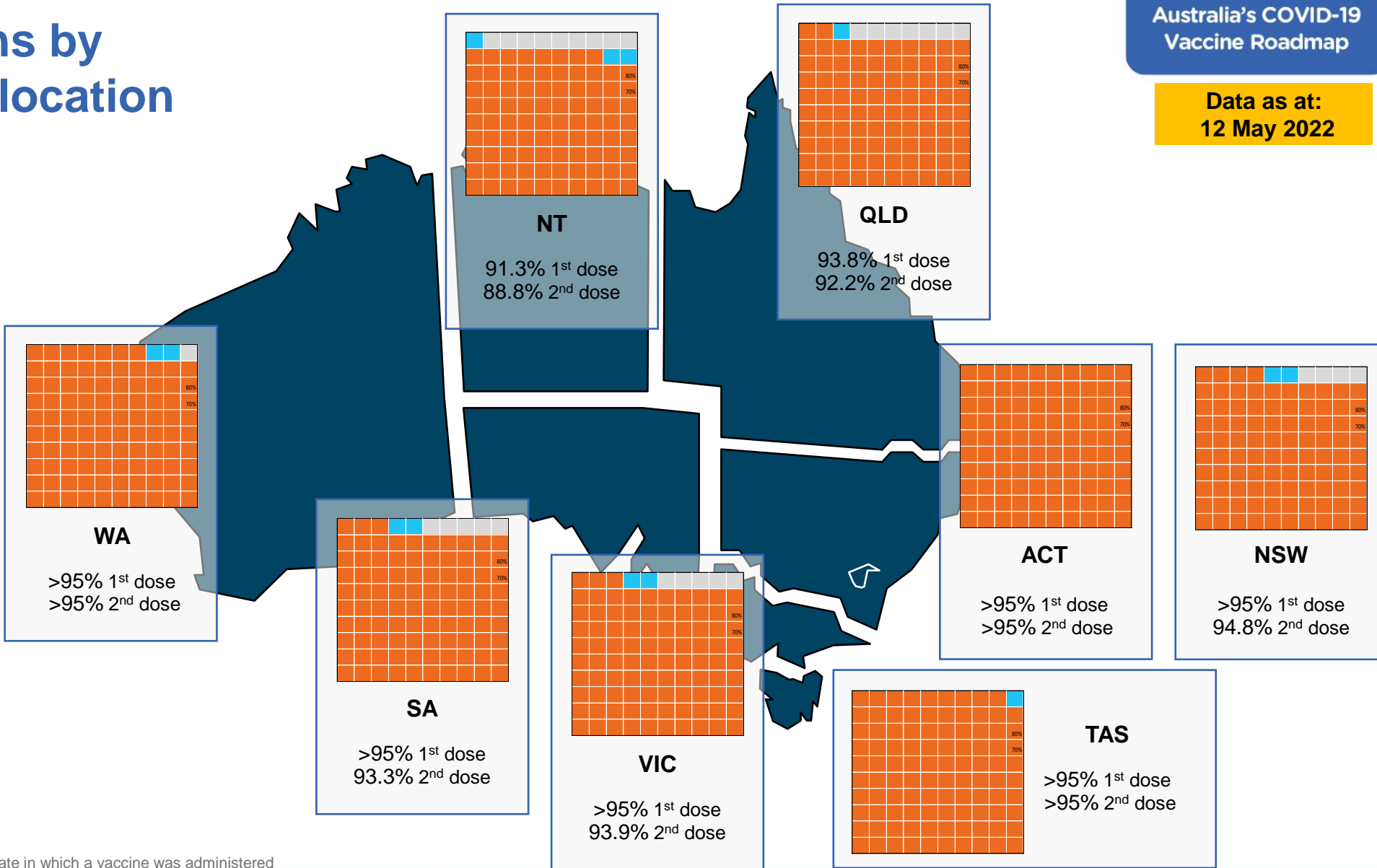
Data as at: 12 May 2022

First doses

Age	Today	4 weeks ago	8 weeks ago
16+	>95%	>95%	>95%
50+	>95%	>95%	>95%
70+	>95%	>95%	>95%

Fully vaccinated

Age	Today	4 weeks ago	8 weeks ago
16+	>95%	>95%	>95%
50+	>95%	>95%	>95%
70+	>95%	>95%	>95%



*Residential state may differ from the state in which a vaccine was administered

Commonwealth and Jurisdiction vaccine doses administered

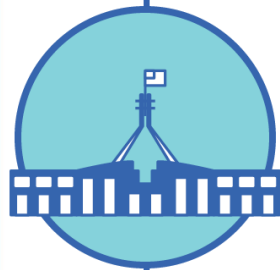
Data as at:
12 May 2022



58,335,000 total vaccine
doses administered nationally as at 12 May
+ 68,188 recorded in the last 24 hours



21,095,915
doses administered by state
and territory facilities
+ 7,334
recorded in the last 24 hours



37,239,085
doses administered by
commonwealth facilities
+ 60,854
recorded in the last 24 hours

35,956,167 total vaccine doses
administered in primary care settings
1,282,918 total vaccine doses
administered in aged care and disability
settings

NSW	Jurisdictions	Commonwealth
Cumulative	5,111,589	12,984,152
Daily increase	1,230	19,480

VIC	Jurisdictions	Commonwealth
Cumulative	6,076,854	9,254,344
Daily increase	1,921	14,646

QLD	Jurisdictions	Commonwealth
Cumulative	3,843,427	7,192,368
Daily increase	498	12,559

WA	Jurisdictions	Commonwealth
Cumulative	2,502,830	3,915,876
Daily increase	1,175	6,879

TAS	Jurisdictions	Commonwealth
Cumulative	621,754	695,020
Daily increase	227	1,600

SA	Jurisdictions	Commonwealth
Cumulative	1,812,927	2,218,534
Daily increase	1,320	4,198

ACT	Jurisdictions	Commonwealth
Cumulative	784,079	739,562
Daily increase	691	1,138

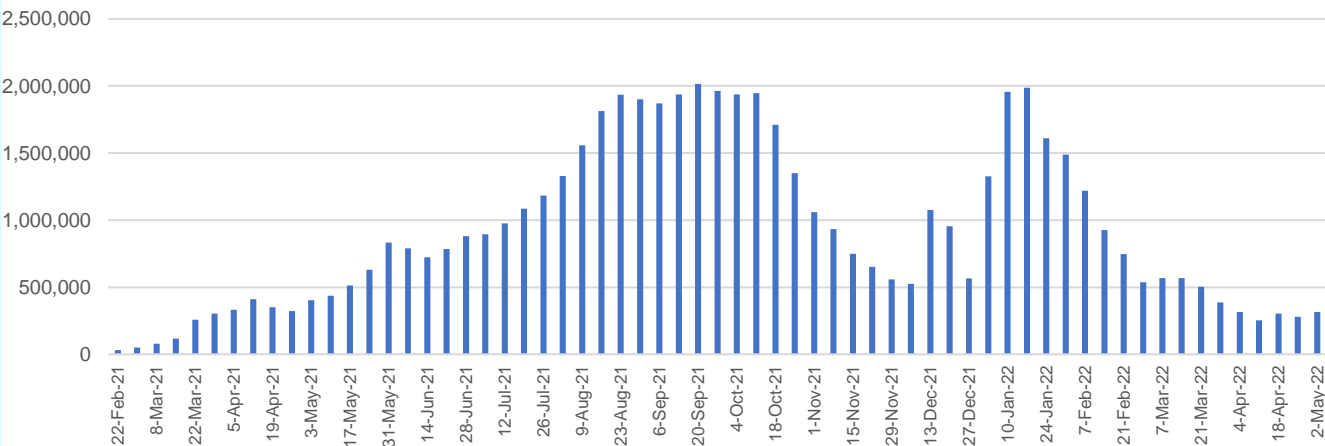
NT	Jurisdictions	Commonwealth
Cumulative	342,455	239,229
Daily increase	272	354

Vaccine milestone charts

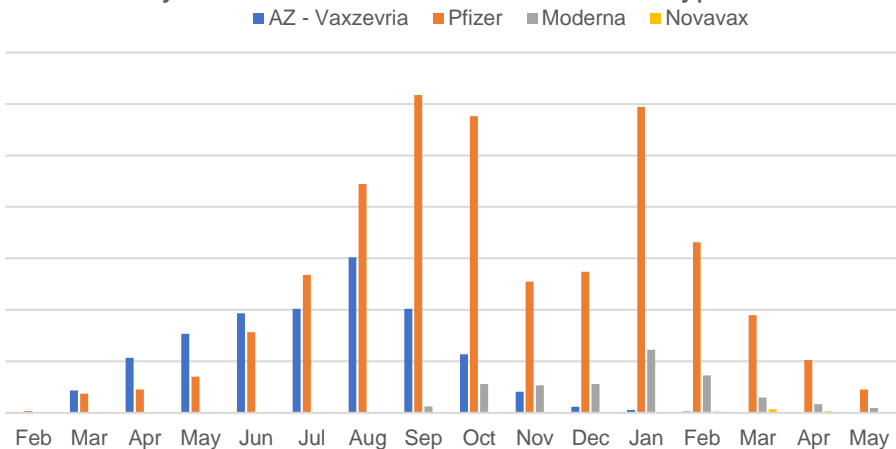
Data as at:
12 May 2022

Australia's COVID-19
Vaccine Roadmap

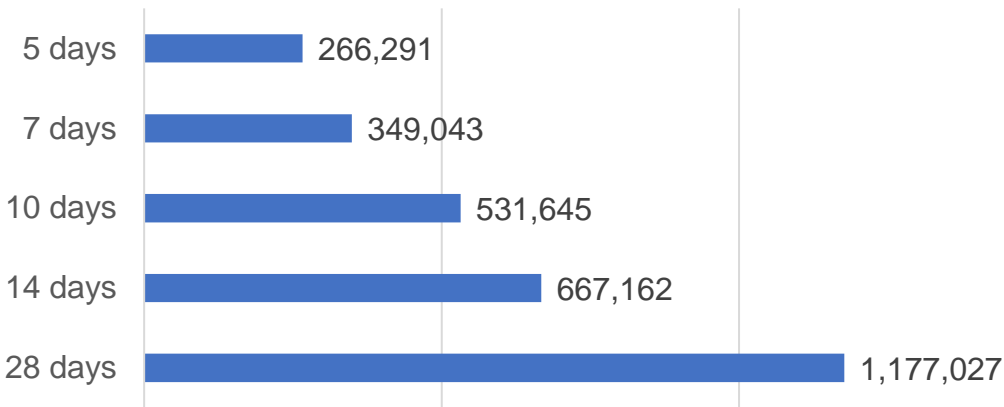
Doses Administered by Week



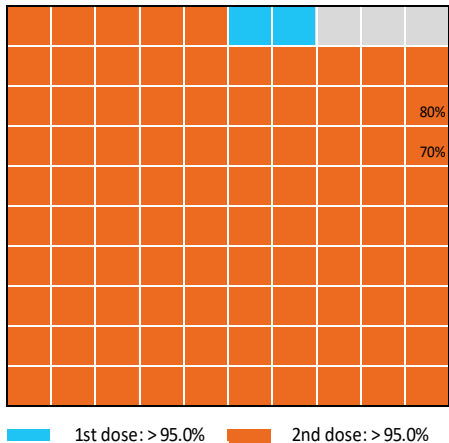
Doses by administration month and vaccine type



Doses Reported



Eligible population percentage coverage



*Each square represents 1% of the national population.
Squares are filled as milestones are achieved.

*Sourced from the Australian Immunisation Register.

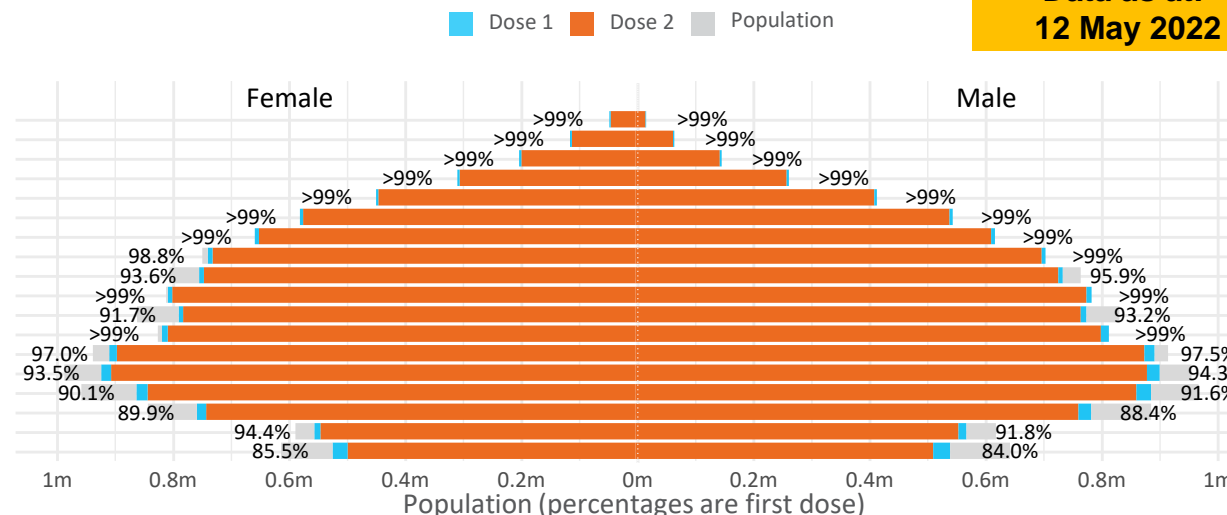
Data as at:
12 May 2022

Doses by age and sex

First and second doses by age and sex

	16+	50+	12-15	5-11
Dose 1	97.19% (20,039,675 doses / 20,619,959 people)	>99% (8,875,591 doses / 8,749,703 people)	84.75% (1,054,327 doses / 1,243,990 people)	52.78% (1,201,514 doses / 2,276,638 people)
Dose 2	95.57% (19,707,498 doses / 20,619,959 people)	>99% (8,769,216 doses / 8,749,703 people)	80.34% (999,433 doses / 1,243,990 people)	37.81% (860,742 doses / 2,276,638 people)

Age	Dose 1	Dose 2
95+	62,829 (>99%)	59,433 (>99%)
90-94	178,409 (>99%)	172,809 (>99%)
85-89	345,813 (>99%)	338,866 (>99%)
80-84	566,031 (>99%)	558,768 (>99%)
75-79	855,416 (>99%)	847,072 (>99%)
70-74	1,115,512 (>99%)	1,104,443 (>99%)
65-69	1,265,150 (>99%)	1,250,893 (>99%)
60-64	1,432,274 (>99%)	1,416,143 (98.6%)
55-59	1,475,771 (94.9%)	1,459,312 (93.8%)
50-54	1,578,386 (>99%)	1,561,477 (>99%)
45-49	1,551,718 (92.5%)	1,533,285 (91.4%)
40-44	1,618,940 (>99%)	1,594,959 (98.4%)
35-39	1,788,854 (97.5%)	1,757,039 (95.8%)
30-34	1,815,339 (94.4%)	1,773,992 (92.2%)
25-29	1,742,681 (91.4%)	1,695,461 (88.9%)
20-24	1,532,823 (89.5%)	1,493,679 (87.2%)
16-19	1,113,729 (93.1%)	1,089,867 (91.1%)
12-15	1,054,327 (84.8%)	999,433 (80.3%)



	AUS	ACT	NSW	NT	QLD	SA	TAS	VIC	WA
16 and over - dose 1	20,039,675	352,369	6,322,460	173,914	3,857,055	1,373,913	444,652	5,156,455	2,093,299
16 and over - dose 2	19,707,498	346,843	6,226,740	169,201	3,793,339	1,344,572	435,572	5,079,917	2,062,053
16 and over - population	20,619,959*	344,037	6,565,651	190,571	4,112,707	1,440,400	440,172	5,407,574	2,114,978
16 and over % with dose 1	97.19%	>99%	96.30%	91.26%	93.78%	95.38%	>99%	95.36%	98.97%
16 and over % with dose 2	95.57%	>99%	94.84%	88.79%	92.23%	93.35%	98.95%	93.94%	97.50%
5 to 11 - dose 1	1,201,514	31,915	358,428	13,252	208,756	84,228	28,704	326,810	141,568
5 to 11 - dose 2	860,742	26,414	260,778	8,188	144,721	60,779	22,659	235,694	97,072
5 to 11 - population	2,276,638	39,789	716,460	24,750	478,731	148,816	45,033	578,499	244,154
5 to 11 % with dose 1	52.78%	80.21%	50.03%	53.54%	43.61%	56.60%	63.74%	56.49%	57.98%
5 to 11 % with dose 2	37.81%	66.39%	36.40%	33.08%	30.23%	40.84%	50.32%	40.74%	39.76%
12 to 15 - dose 1	1,054,327	20,086	324,267	10,834	206,807	68,444	22,948	275,435	115,921
12 to 15 - dose 2	999,433	19,551	310,089	9,763	193,740	64,821	21,855	263,783	107,463
12 to 15 - population	1,243,990	19,693	390,330	13,060	270,146	82,747	26,308	308,611	132,869
12 to 15 % with dose 1	84.75%	>99%	83.08%	82.96%	76.55%	82.71%	87.23%	89.25%	87.24%
12 to 15 % with dose 2	80.34%	>99%	79.44%	74.75%	71.72%	78.34%	83.07%	85.47%	80.88%

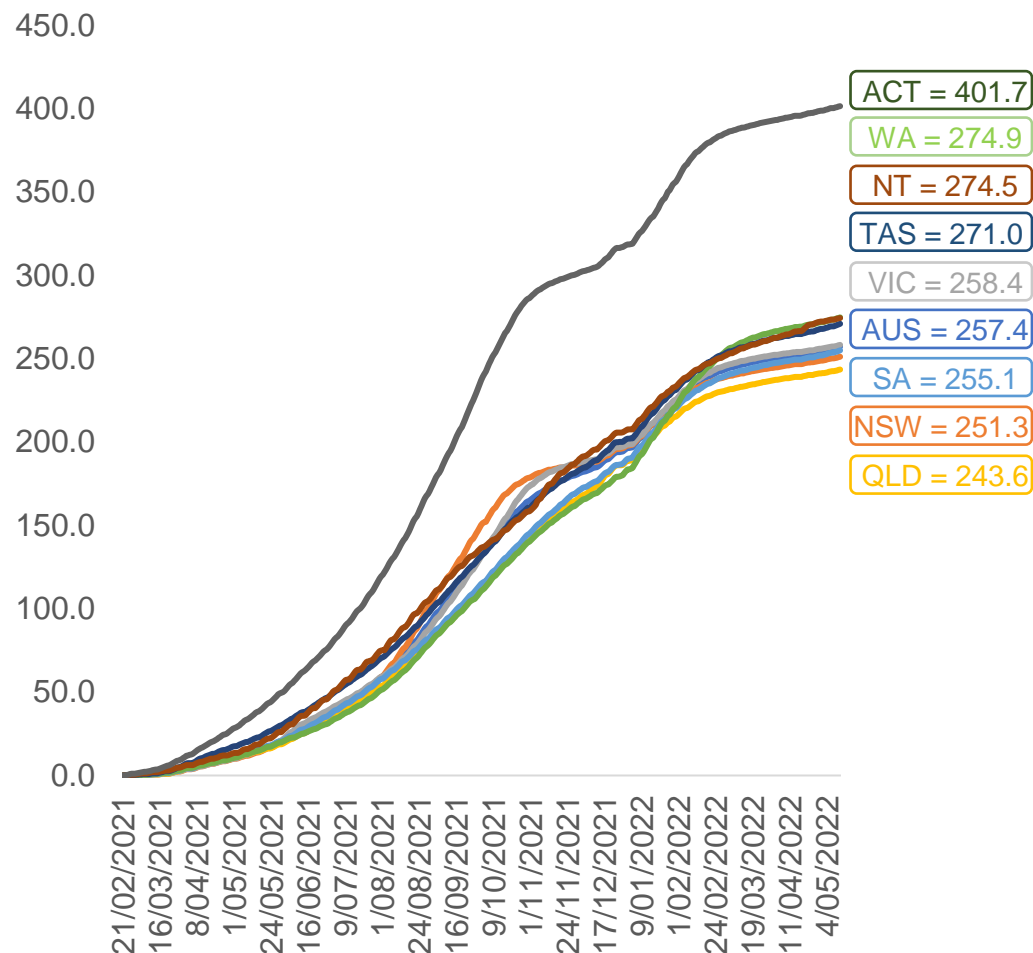
*National population will not equal sum of listed jurisdictions due to a small number of people counted in national population residing in some 'other' territories. Sum of state doses will not add to national total as some records are unable to be geocoded to a State or Territory.
Doses sourced from Australian Immunisation Register, population from ABS ERP June 2020

Vaccinations by location

Data as at:
12 May 2022

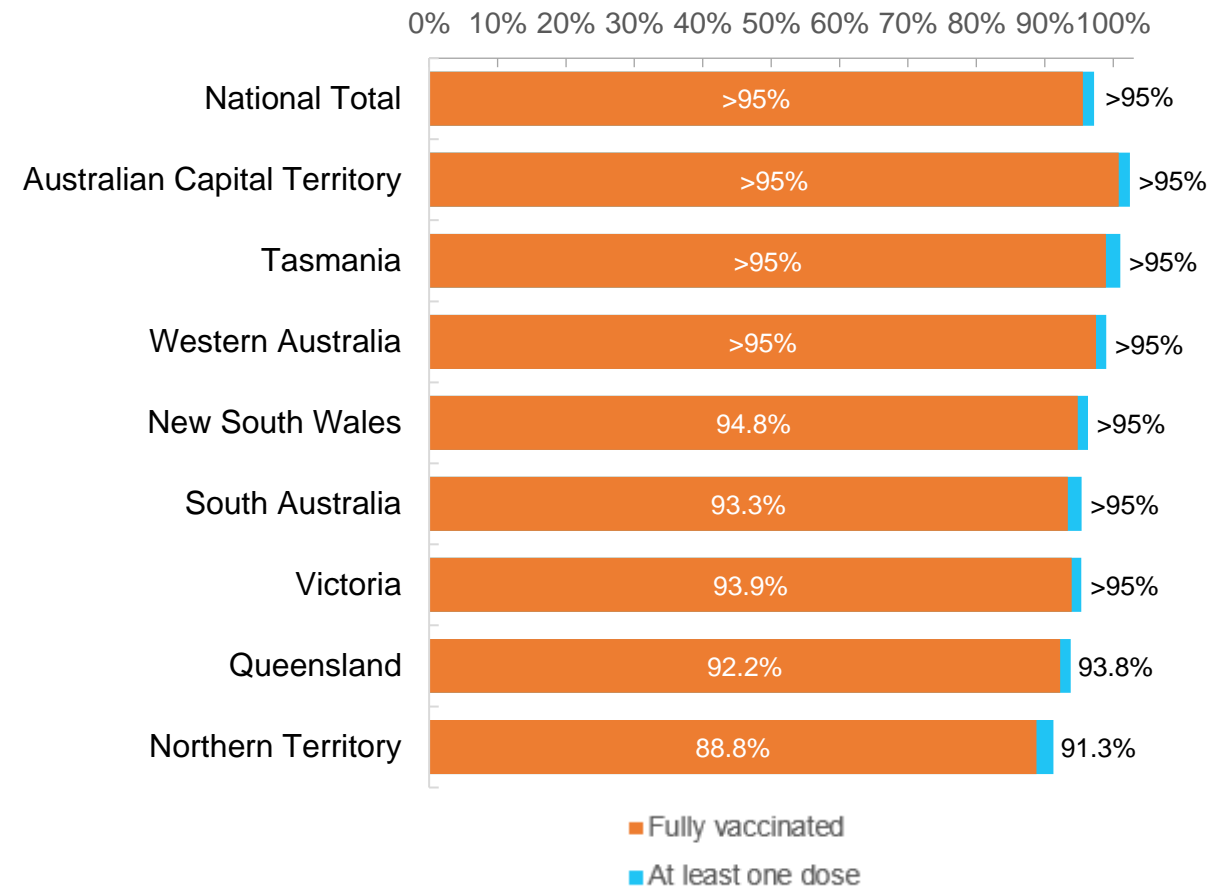
Australia's COVID-19
Vaccine Roadmap

Cumulative total doses administered vs eligible state populations*



*Not an indication of percentage vaccinated, numbers will exceed 100 due to multiple doses required per person of the population.
All doses are included for those aged 12 and above, and are based on vaccination provider location.

First and Second Doses by residential location



Aboriginal and Torres Strait Islander peoples

Number of people vaccinated

Data as at:
10 May 2022
Updated weekly

Australia's COVID-19
Vaccine Roadmap



440,767

people over the age of 16
have had at least one dose

84.5%

of people over the age of 16
have had at least one dose



421,727

people over the age of 16
are fully vaccinated

80.9%

of people over the age of 16 are
fully vaccinated



People aged 12 – 15 years

48,508

42,695

68.3%

At least one dose

60.1%

Fully vaccinated

178 Aboriginal community controlled health services (ACCHS)

0#

50

27

44

12

3

21

21

ACT

NSW

NT

QLD

SA

TAS

VIC

WA

Medicare Address State ^{##}	Individuals Dose 1	Individuals Dose 1 %	Individuals Dose 2	Individuals Dose 2 %
Australian Capital Territory	4,786	91.0%	4,665	88.7%
New South Wales	135,454	86.8%	132,367	84.8%
Northern Territory	41,486	89.5%	39,363	85.0%
Queensland	115,805	81.4%	110,312	77.6%
South Australia	19,959	80.1%	18,535	74.4%
Tasmania	13,921	88.6%	13,514	86.0%
Victoria	35,552	89.8%	34,770	87.8%
Western Australia	53,597	86.3%	49,671	80.0%
Unknown/Other Territories	20,207	69.1%	18,530	63.4%
Totals	440,767	84.5%	421,727	80.9%

Source: Australian Immunisation Register

*Identifying as Aboriginal and Torres Strait Islander is optional and the estimated population may be under reported.

**Includes all Aboriginal and Torres Strait Islander peoples who have received a vaccination, not limited to those administered in an ACCHS setting

#ACCHS in the ACT are currently operating as a Commonwealth Vaccine Clinics so not included to avoid double counting

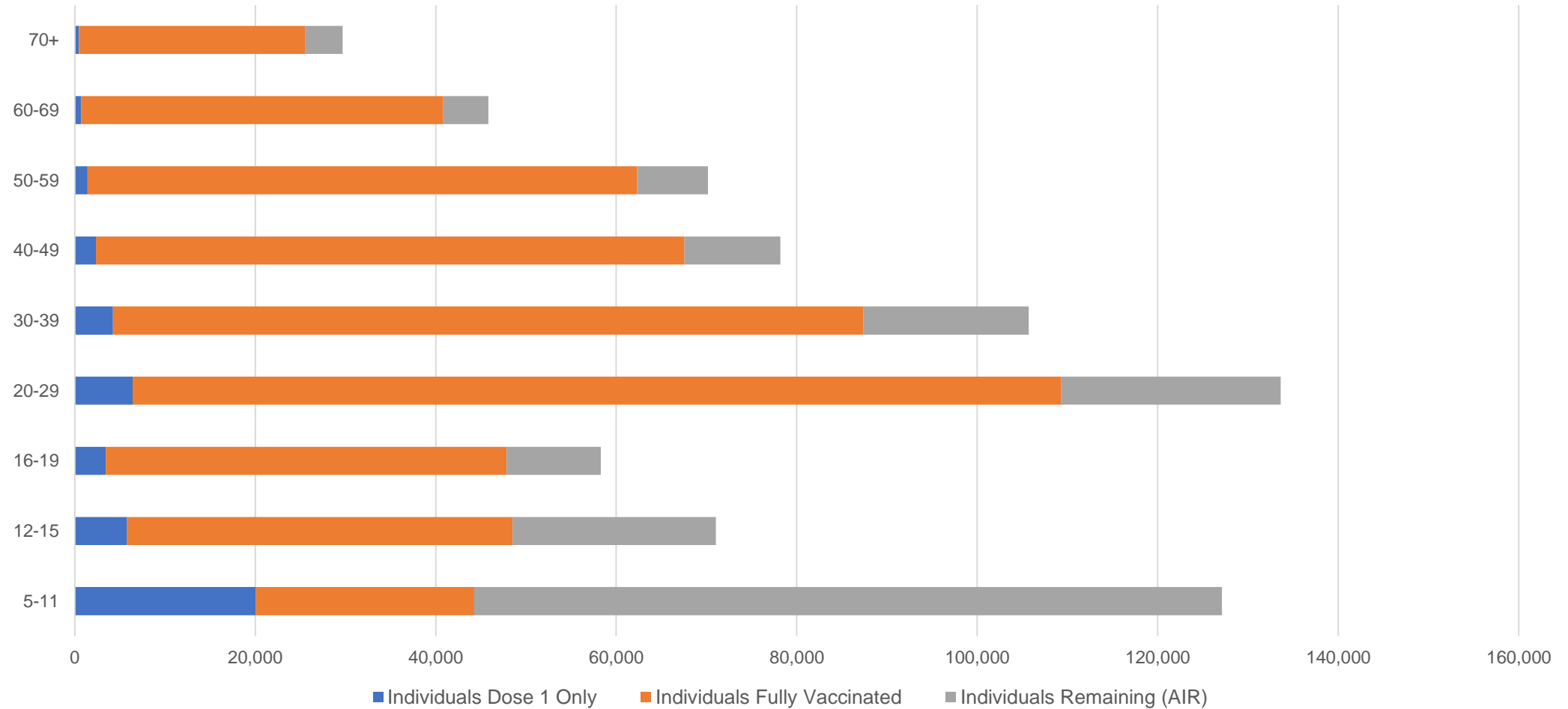
##The above table includes all identified Aboriginal and Torres Strait Islander people who are aged 16 and above by their state of residence.

Aboriginal and Torres Strait Islander peoples

Number of people vaccinated by age

Data as at:
10 May 2022
Updated weekly

Australia's COVID-19
Vaccine Roadmap



Source: Australian Immunisation Register

Commonwealth primary care

Data as at:
12 May 2022

Australia's COVID-19
Vaccine Roadmap



Primary care vaccine administration sites

5,724	128	178	3,596
GPs	CVCs	ACCHS	Pharmacies



35,956,167 total vaccine doses administered
primary care settings as at 12 May
+ 59,611 recorded in the last 24 hours

Primary care vaccinations by provider type

	Doses administered	Daily increase	7 day increase
General Practice* includes other Commonwealth	28,881,770	42,620	215,193
Pharmacy	7,074,397	16,991	88,414

NSW
12,424,519
(+19,325 daily increase)

VIC
8,934,163
(+14,000 daily increase)

QLD
6,913,330
(+12,564 daily increase)

WA
3,779,863
(+6,663 daily increase)

TAS
673,812
(+1,591 daily increase)

SA
2,138,301
(+4,230 daily increase)

ACT
567,344
(+1,030 daily increase)

NT
215,159
(+263 daily increase)

309,676

doses administered to persons
residing in other territories or with
missing residential information

*General practice includes Commonwealth Vaccination Clinics, Aboriginal Community Health Centres, Royal Flying Doctor Service and other Commonwealth vaccination facilities

Source: Australian Immunisation Register

Data as at:
12 May 2022

Commonwealth aged care and disability doses administered



1,282,918 (+ 1,243 last 24 hours)

Total vaccine doses administered in aged care and disability facilities as at 12 May

Number of doses administered as part of the Commonwealth aged and disability care rollout

NSW
561,553
(+238 daily increase)

VIC
238,517
(+478 daily increase)

QLD
203,998
(+157 daily increase)

WA
108,947
(+189 daily increase)

TAS
23,338
(<10 daily increase)

SA
84,425
(+40 daily increase)

ACT
17,574
(+16 daily increase)

NT
7,605
(+44 daily increase)

36,961

doses administered to persons
residing in other territories or with
missing residential information

*Sourced from the Australian Immunisation Register. Includes all persons vaccinated at participating residential aged care, disability and related industry settings.

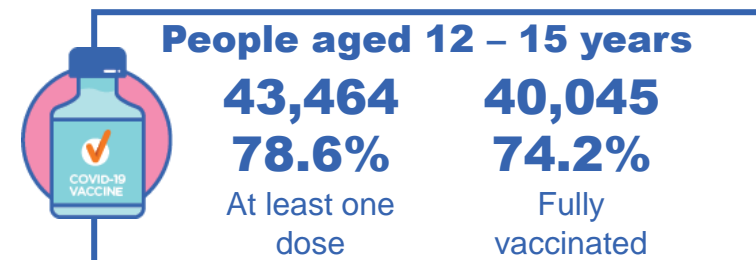
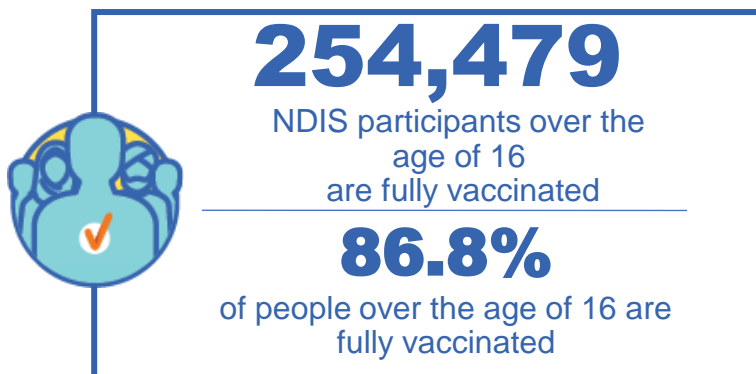
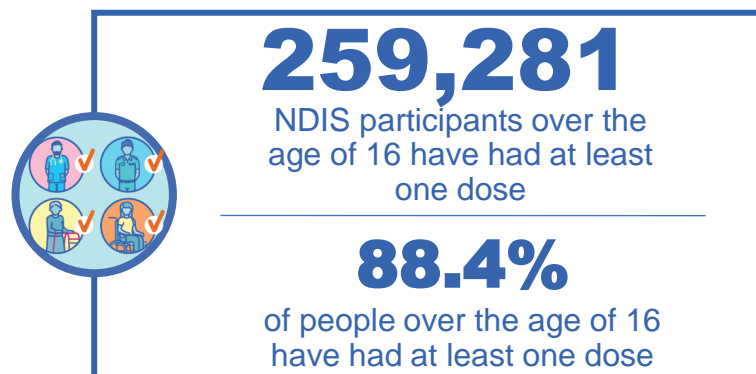
**State level breakdown indicates the residential location and may not align to the state in which the vaccination occurred.

Source: Australian Immunisation Register

National Disability Insurance Scheme (NDIS) reported vaccinations

Data as at:
12 May 2022
Updated weekly

Australia's COVID-19
Vaccine Roadmap



NDIS participant vaccinations

	People aged 16+ with at least one dose	People aged 16+ fully vaccinated	% People aged 16+ with at least one dose	% People aged 16+ fully vaccinated
ACT	4,897	4,832	90.3%	89.1%
NSW	79,544	78,246	88.7%	87.2%
NT	2,243	2,177	78.6%	76.3%
QLD	51,199	50,222	87.0%	85.4%
SA	21,182	20,663	86.3%	84.2%
TAS	6,496	6,344	88.4%	86.3%
VIC	68,955	67,767	89.5%	88.0%
WA	24,765	24,228	90.0%	88.0%
National	259,281	254,479	88.4%	86.8%

Source: Linkage between National Disability Insurance Agency data and the Australian Immunisation Register. Total NDIS participant numbers as at 28 February. Australian Immunisation Register data as at 11 May. Includes all participants regardless of residence type.

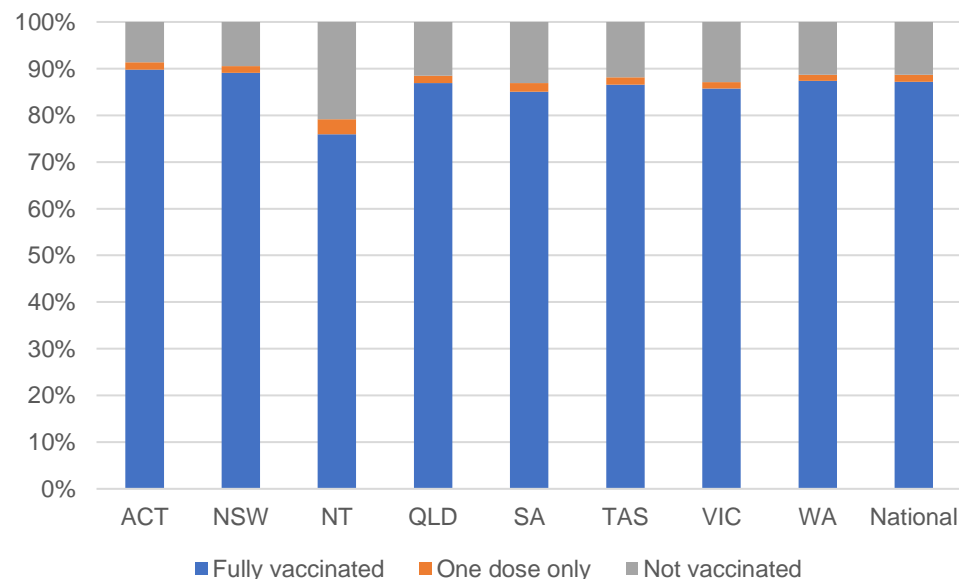
National Disability Insurance Scheme (NDIS) reported vaccinations

Data as at:
12 May 2022
Updated Weekly

Australia's COVID-19
Vaccine Roadmap

NATIONAL	Total people with at least one dose	People fully vaccinated	Total number of individuals in cohort	% People with at least one dose	% People fully vaccinated
NDIS participants living in disability accommodation	20,794	20,451	23,352	89.0%	87.6%

NDIS participants in disability and aged care accommodation



Source: Linkage between National Disability Insurance Agency data and the Australian Immunisation Register. Includes participants residing in disability accommodation only.

Source: Total NDIS participant numbers as at 28 February. Participant data as at 11 May. Australian Immunisation Register data as at 11 May. Worker data as at 4 May.

NDIS workforce vaccinations

	NDIS workers with at least one dose	NDIS workers fully vaccinated	% NDIS workers with at least one dose	% NDIS workers fully vaccinated
NSW	121,713	117,437	98.2%	94.8%
VIC	116,092	112,390	98.3%	95.2%
QLD	69,687	68,782	97.5%	96.3%
WA	32,669	31,051	97.8%	93.0%
SA	35,437	33,033	98.5%	91.8%
TAS	10,733	10,504	99.5%	97.4%
ACT	3,511	3,469	99.0%	97.8%
NT	3,442	3,293	99.4%	95.1%
TOTAL	393,284	379,959	98.2%	94.8%

Source: the NDIS Commission has established a requirement for registered NDIS providers who provide intensive disability support services to report on the vaccination status of workers they employ, or otherwise engage, to deliver NDIS-funded supports and services, and who are required to be vaccinated in accordance with in-force state and territory public health orders. The statistics reflect data reported to the NDIS Commission by registered NDIS providers and should be considered indicative and subject to change

Note: Some registered NDIS providers are yet to report on the vaccination status of their workforce. The NDIS Commission is working with those providers around reporting requirements.

Remaining workers not included include those exempt from vaccination requirements, workers whose vaccination status is not yet verified by the provider (such as workers on leave) and provider reporting anomalies.

Residential aged care vaccination rollout

Residential aged care facilities status

176,228

People fully vaccinated

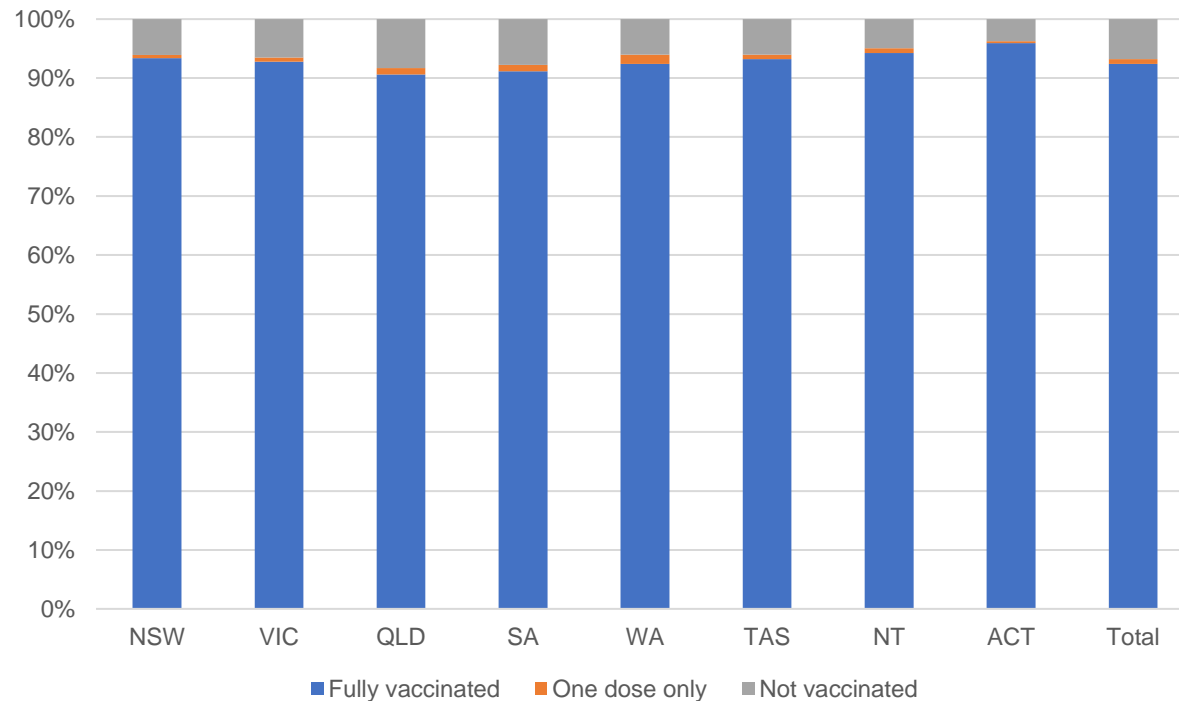
177,805

People with at least one dose

Australia's COVID-19 Vaccine Roadmap

Data as at:
12 May 2022
Updated weekly

Aged care resident vaccinations



Aged care worker vaccinations

Jurisdictions	Total workers with at least one dose	Workers fully vaccinated	% Workers with at least one dose	% Workers fully vaccinated
NSW	78,020	78,016	99.7%	99.7%
VIC	68,347	68,346	98.3%	98.3%
QLD	47,478	47,473	99.0%	99.0%
SA	26,895	26,879	98.5%	98.4%
WA	24,144	24,140	100.0%	99.9%
TAS	7,474	7,473	100.0%	100.0%
NT	898	898	100.0%	100.0%
ACT	2,854	2,854	96.7%	96.7%
Total	256,110	256,079	99.0%	99.0%

Source: My Aged Care Portal vaccination progress

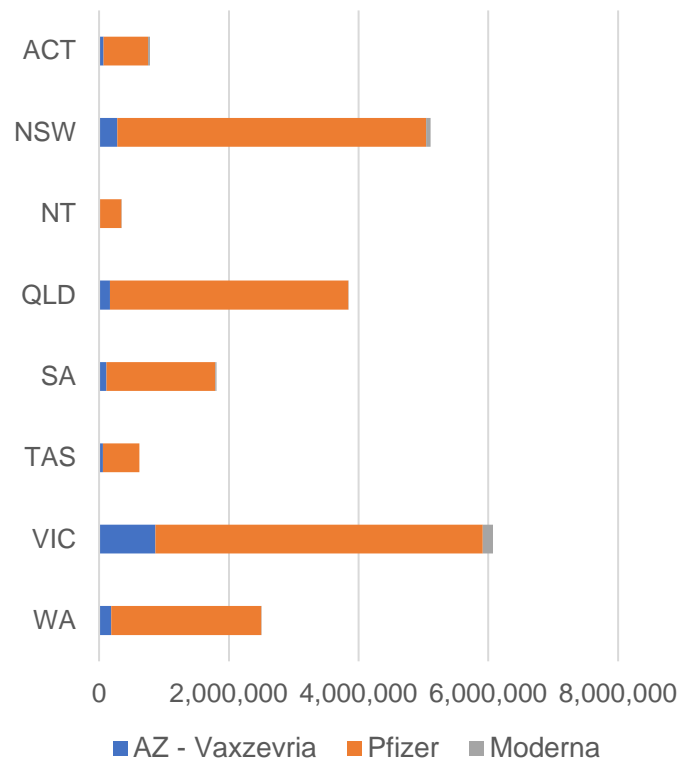
*Status updates are provided by facilities at least once per week. Reporting is updated Monday to Friday to encompass different facility updates being made on different days.

Data is sourced directly from Aged Care Service Providers and is not drawn or closely aligned with data from AIR due to inconsistencies and potential lags in uploading of records.

Data as at:
12 May 2022

Jurisdiction administered

Total vaccine doses administered in State and Territory clinics as at 12 May



21,095,915 total vaccine doses administered
in State and Territory clinics as at 12 May
+ **7,334** recorded in the last 24 hours
+ **40,613** recorded in the last 7 days

NSW
5,111,589
(+1,230 daily
increase)

VIC
6,076,854
(+1,921 daily
increase)

QLD
3,843,427
(+498 daily
increase)

WA
2,502,830
(+1,175 daily
increase)

TAS
621,754
(+227 daily
increase)

SA
1,812,927
(+1,320 daily
increase)

ACT
784,079
(+691 daily
increase)

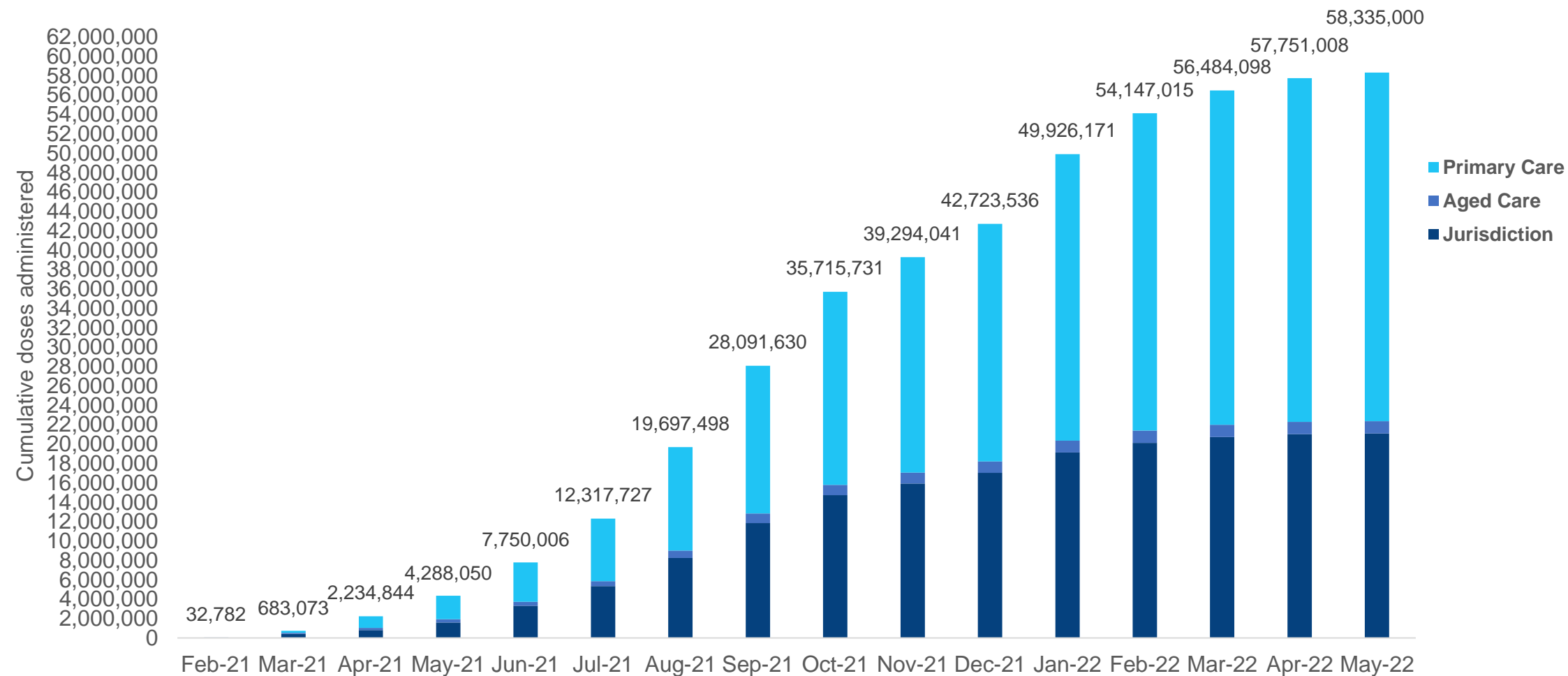
NT
342,455
(+272 daily
increase)

*Sourced from the Australian Immunisation Register. Numbers are calculated as difference in daily cumulative reported numbers to allow for historical corrections.

Source: Australian Immunisation Register

Cumulative doses administered by channel

Data as at:
12 May 2022



Source: Australian Immunisation Register

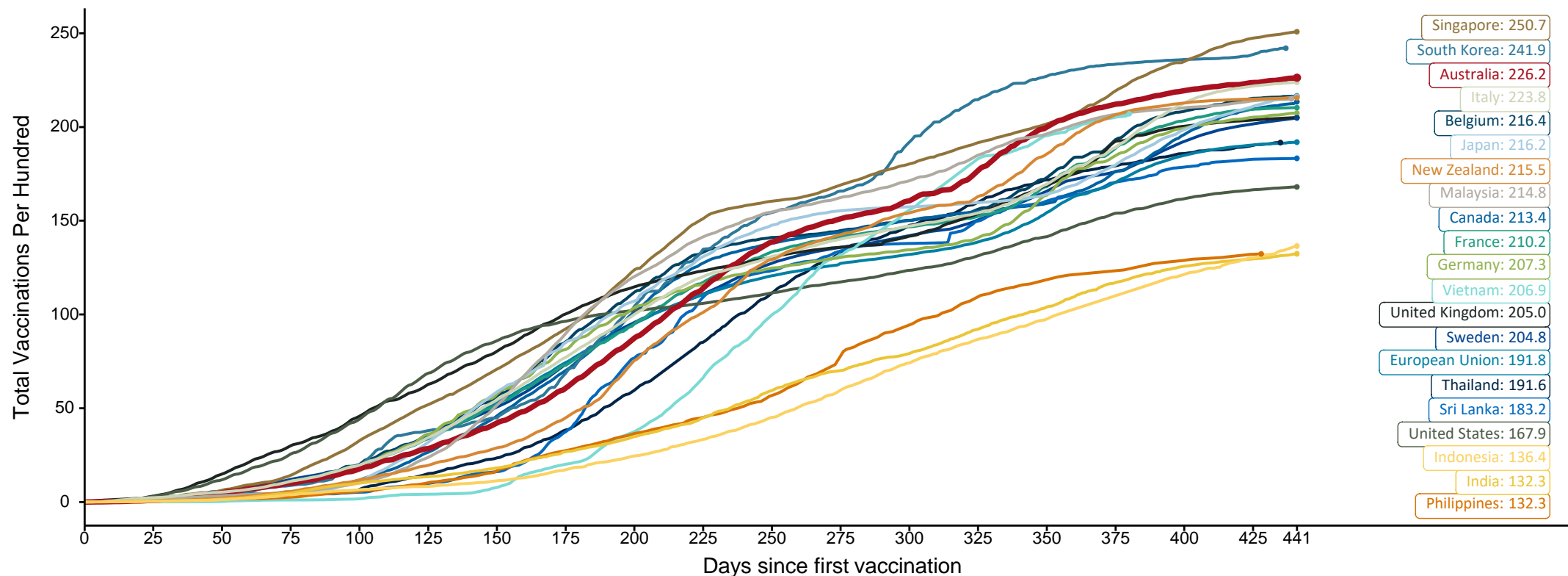
Doses at equivalent stages of rollout (Day 441)

Data as at:
09 May 2022
Updated Weekly

Australia's COVID-19
Vaccine Roadmap

The x-axis is truncated at the length of Australia's vaccination program. Countries with intermittent reporting have had their doses per 100 imputed to Australia's current stage of rollout. Israel excluded as it is beyond scale of the graph

Cumulative doses administered (09 May): **58,134,062**



Note: From 11 January 2022, data for Australia includes all doses administered to people 5 and over. Prior to 11 January, data was for 12 and over.

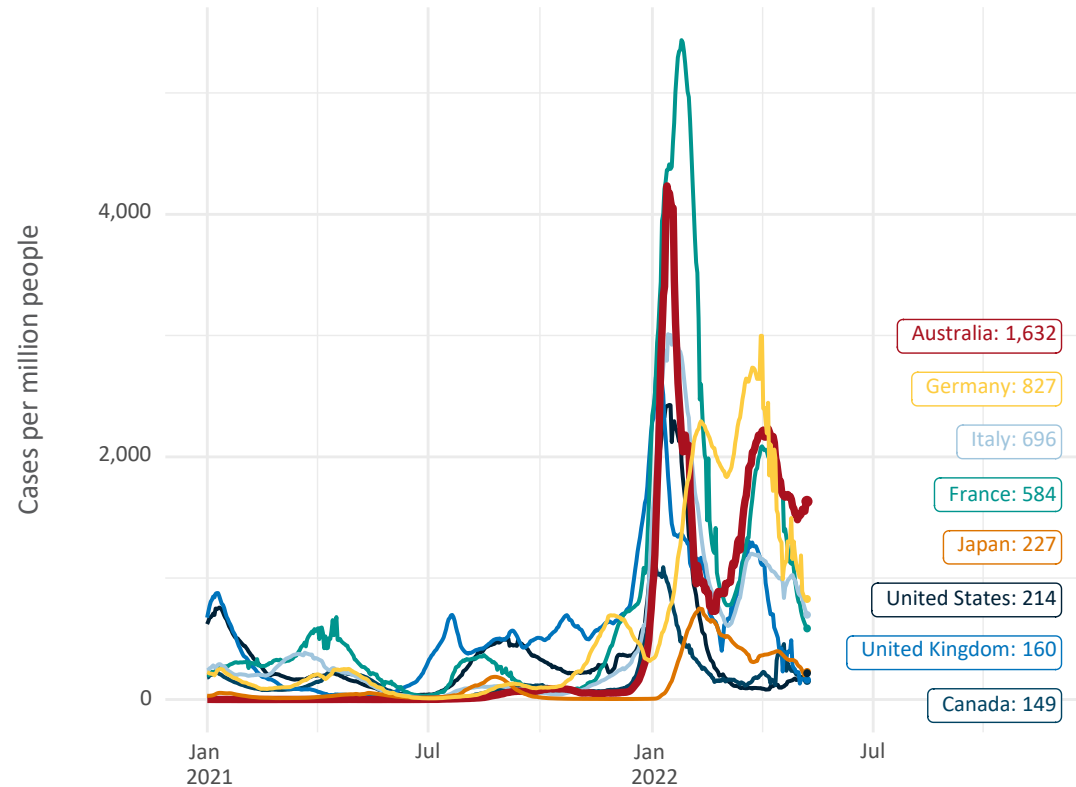
Source: Department of Health (Australia), Our World in Data (international)

Latest data: 09 May

International data – COVID-19

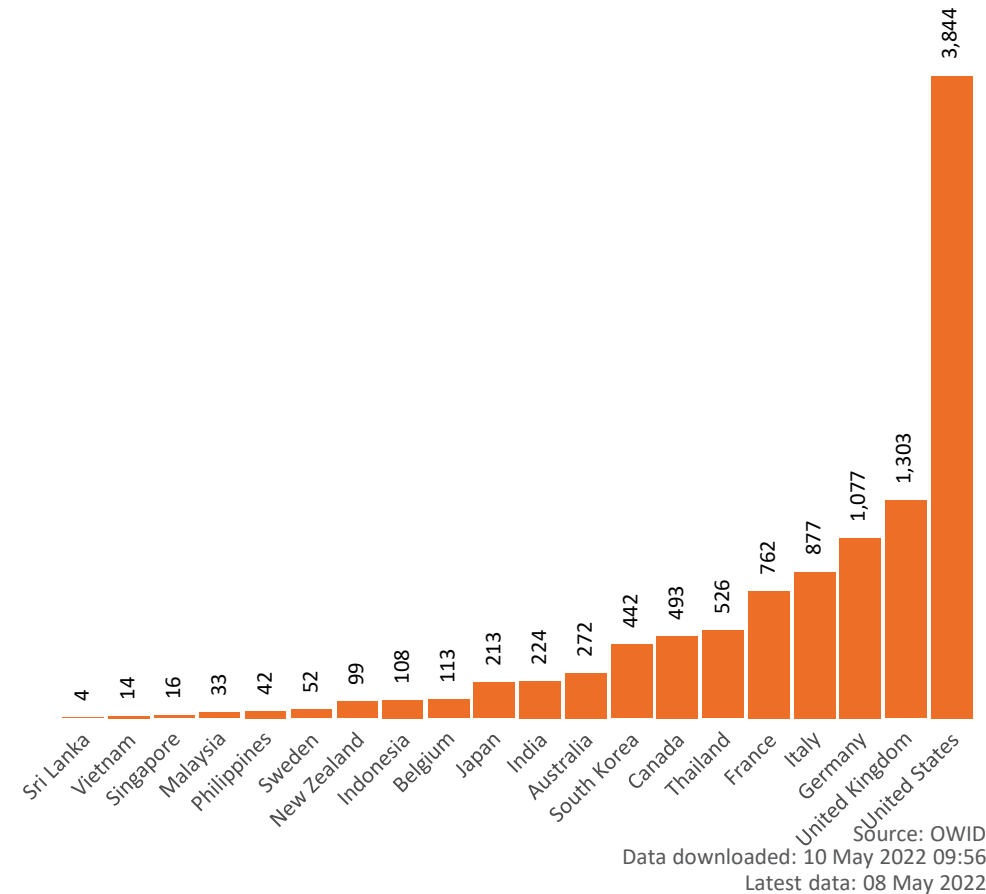
Data as at:
09 May 2022
Updated Weekly

New daily cases per million since 2021, Australia and G7 countries
Smoothed - 7 day average



Source: OWID
Data downloaded: 10 May 2022 09:56
Latest data: 08 May 2022

COVID-19 deaths in past 7 days - Australia and select countries



Source: OWID
Data downloaded: 10 May 2022 09:56
Latest data: 08 May 2022

Pandemic Response Payments

Australia's COVID-19
Vaccine Roadmap

Data as at midnight:
8 May 2022 (updated weekly)

2.38 million

People have received at least one
COVID Disaster Payment
(including ISP200)

7.95 million

Claims granted across
three different payments

\$14.42 billion

Paid Out as at 8 May 2022

Claims Received Digitally

93%

Three payments available:

COVID Disaster Payment

assisting during a lockdown event
in a Commonwealth hotspot.

Income Support Payment \$200

for income support recipients who
lost at least 8 hours of work.

Pandemic Leave Disaster

for those who have to self-isolate,
quarantine or care.

For more information visit:

www.servicesaustralia.gov.au



COVID Disaster Payment: 5.89 million claims received - 2.19 million individuals paid a total of \$12.59 billion.

\$200 Income Support Payment: 353,000 claims received - 183,000 individuals paid a total of \$268.92 million.

Pandemic Leave Disaster Payment: 2.21 million claims received - 1.34 million individuals paid a total of \$1.55 billion.

COVID-19 DISASTER PAYMENTS

