



CURRENT STATUS OF CONFIRMED CASES



126



ACT	NSW	NT	QLD	SA	TAS	VIC	WA
5	54	0	15	10	2	31	9

3,114



ACT	NSW	NT	QLD	SA	TAS	VIC	WA
66	1,499	46	463	221	46	502	271

69,815,498

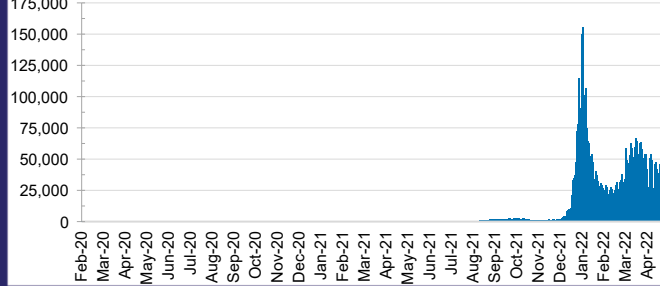


**TOTAL TESTS
REPORTED**

ACT	NSW	NT	QLD
1,070,552	31,209,434	770,458	7,369,514

SA	TAS	VIC	WA
4,650,543	651,884	20,614,947	3,478,166

DAILY NUMBER OF REPORTED CASES

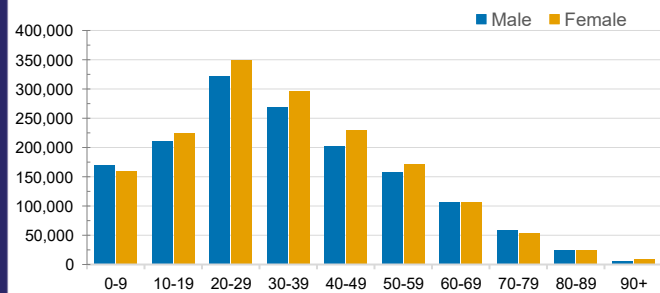


CASES IN AGED CARE SERVICES

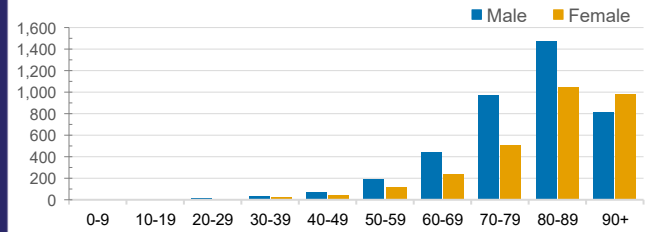
Confirmed Cases	Australia	ACT	NSW	NT	QLD	SA	TAS	VIC	WA
Residential Care Recipients	37114 (2270)	359 (19)	13453 (736)	109 (6)	6181 (276)	3038 (148)	715 (15)	11302 (985)	1957 (85)
In Home Care Recipients	205 (13)	0	45 (3)	0	15	1	5 (2)	138 (7)	1 (1)

Cases in care recipients (deaths)

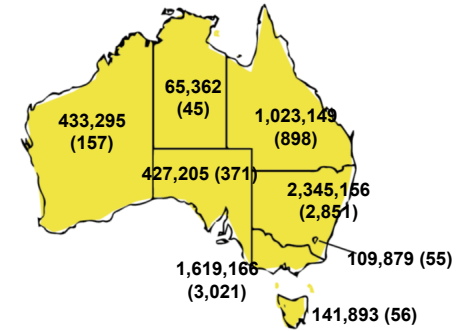
CASES BY AGE GROUP AND SEX



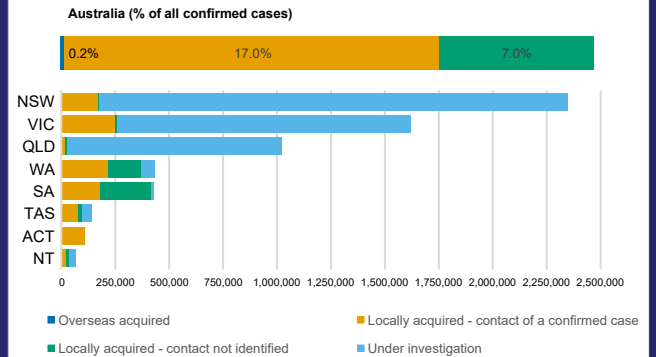
DEATHS BY AGE GROUP AND SEX



CASES (DEATHS) BY STATE AND TERRITORIES



CASES BY SOURCE OF INFECTION



PUBLIC HEALTH RESPONSE MEASURE

