



CURRENT STATUS OF CONFIRMED CASES



133



ACT	NSW	NT	QLD	SA	TAS	VIC	WA
4	62	1	14	11	3	29	9

3,131



ACT	NSW	NT	QLD	SA	TAS	VIC	WA
70	1,529	38	467	218	46	492	271

69,736,592

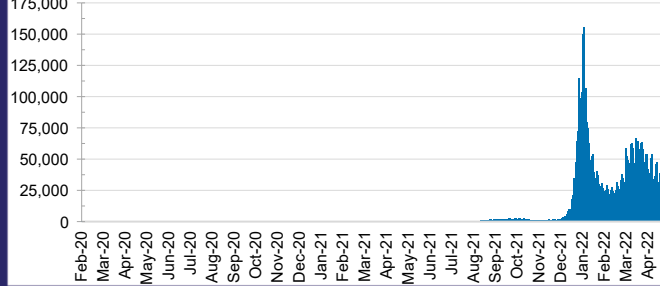


**TOTAL TESTS
REPORTED**

ACT	NSW	NT	QLD
1,067,967	31,183,516	769,615	7,360,877

SA	TAS	VIC	WA
4,643,455	650,976	20,596,320	3,463,866

DAILY NUMBER OF REPORTED CASES

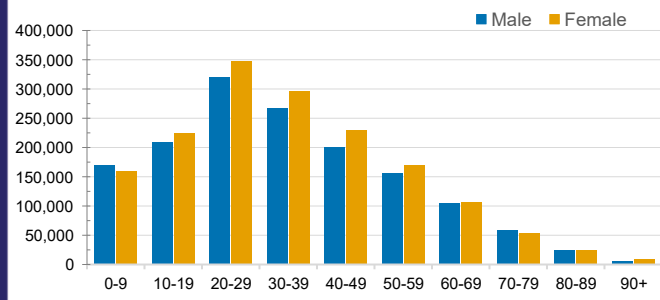


CASES IN AGED CARE SERVICES

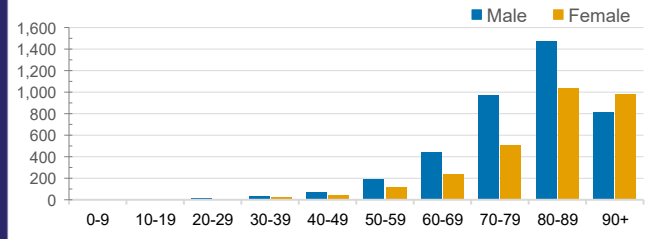
Confirmed Cases	Australia	ACT	NSW	NT	QLD	SA	TAS	VIC	WA
Residential Care Recipients	36703 (2241)	355 (19)	13368 (733)	109 (6)	6072 (276)	2998 (145)	691 (15)	11173 (982)	1937 (65)
In Home Care Recipients	205 (13)	0	45 (3)	0	15	1	5 (2)	138 (7)	1 (1)

Cases in care recipients (deaths)

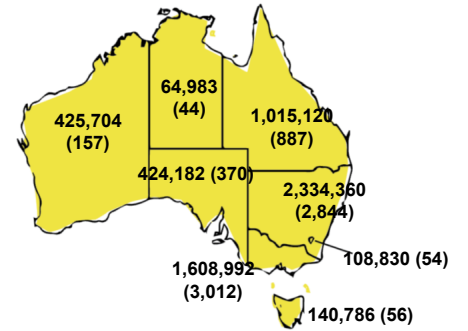
CASES BY AGE GROUP AND SEX



DEATHS BY AGE GROUP AND SEX

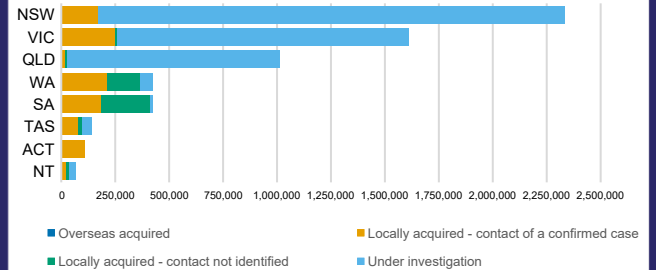


CASES (DEATHS) BY STATE AND TERRITORIES



CASES BY SOURCE OF INFECTION

Australia (% of all confirmed cases)



PUBLIC HEALTH RESPONSE MEASURE

Proportion of total cases under investigation

