



CURRENT STATUS OF CONFIRMED CASES



142



ACT	NSW	NT	QLD	SA	TAS	VIC	WA
4	68	1	21	11	2	25	10

3,104



ACT	NSW	NT	QLD	SA	TAS	VIC	WA
67	1,510	37	504	221	50	473	242

69,633,418

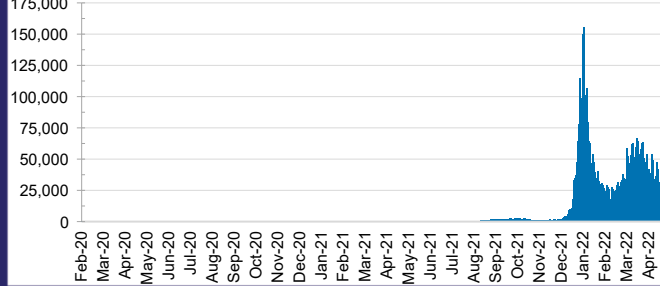


**TOTAL TESTS
REPORTED**

ACT	NSW	NT	QLD
1,065,465	31,140,146	768,775	7,349,401

SA	TAS	VIC	WA
4,633,439	649,683	20,576,892	3,449,617

DAILY NUMBER OF REPORTED CASES

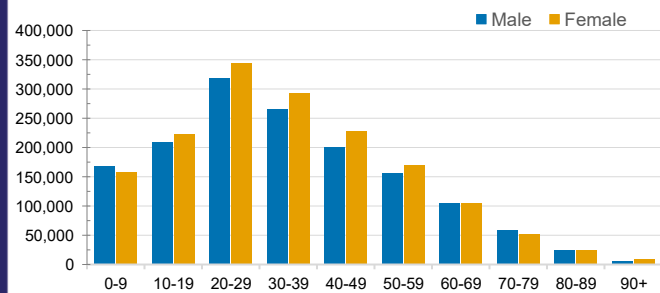


CASES IN AGED CARE SERVICES

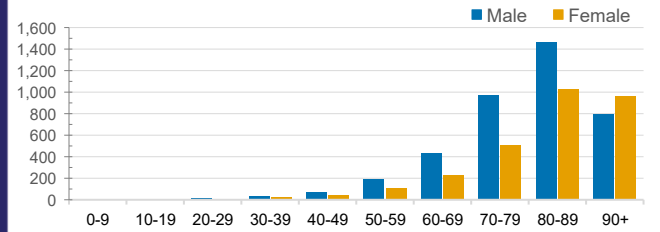
Confirmed Cases	Australia	ACT	NSW	NT	QLD	SA	TAS	VIC	WA
Residential Care Recipients	36252 (2220)	346 (19)	13236 (727)	107 (6)	5999 (271)	2925 (140)	688 (15)	11034 (980)	1917 (62)
In Home Care Recipients	205 (13)	0	45 (3)	0	15	1	5 (2)	138 (7)	1 (1)

Cases in care recipients (deaths)

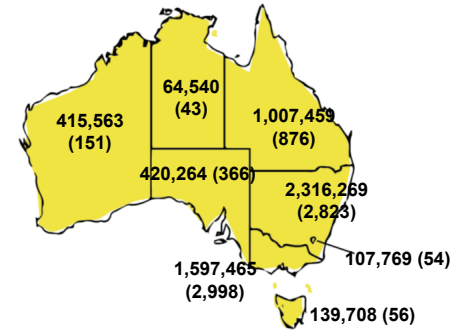
CASES BY AGE GROUP AND SEX



DEATHS BY AGE GROUP AND SEX

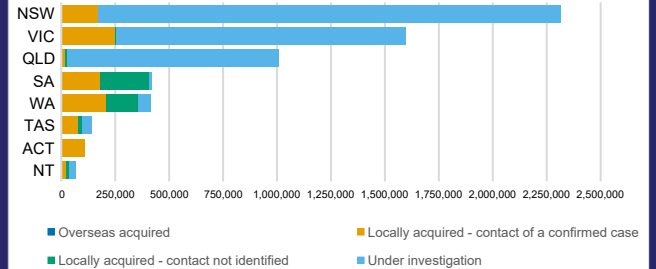


CASES (DEATHS) BY STATE AND TERRITORIES



CASES BY SOURCE OF INFECTION

Australia (% of all confirmed cases)



PUBLIC HEALTH RESPONSE MEASURE

Proportion of total cases under investigation

