



CURRENT STATUS OF CONFIRMED CASES



97



ACT	NSW	NT	QLD	SA	TAS	VIC	WA
3	34	0	4	8	1	37	10

2,774



ACT	NSW	NT	QLD	SA	TAS	VIC	WA
88	1,181	11	365	216	46	550	317

71,853,338

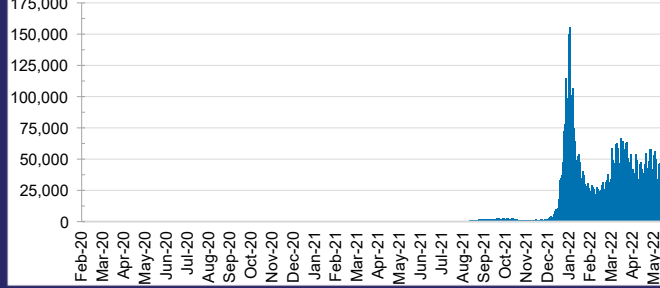


**TOTAL TESTS
REPORTED**

ACT	NSW	NT	QLD
1,125,367	31,902,775	786,590	7,602,899

SA	TAS	VIC	WA
4,878,896	677,841	21,032,772	3,846,198

DAILY NUMBER OF REPORTED CASES

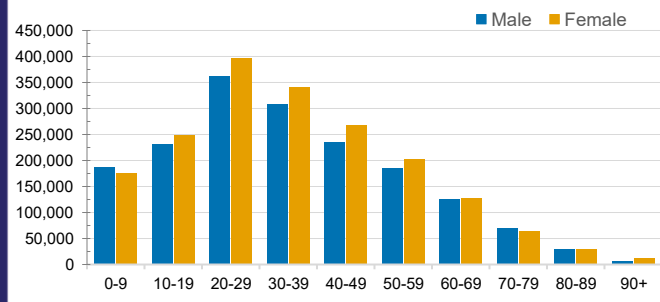


CASES IN AGED CARE SERVICES

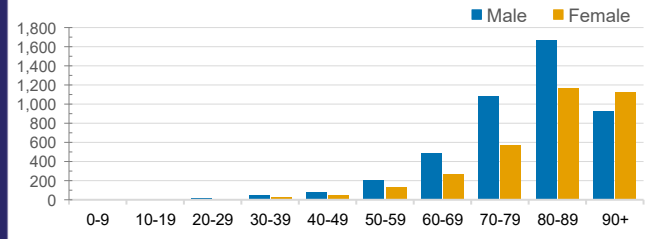
Confirmed Cases	Australia	ACT	NSW	NT	QLD	SA	TAS	VIC	WA
Residential Care Recipients	45869 (2487)	512 (25)	16013 (812)	116 (6)	7292 (308)	3824 (196)	1043 (20)	13994 (1022)	3075 (98)
In Home Care Recipients	38,593	694	14,190	166	7,143	3,863	585	8,155	3,797

Cases in care recipients (deaths)

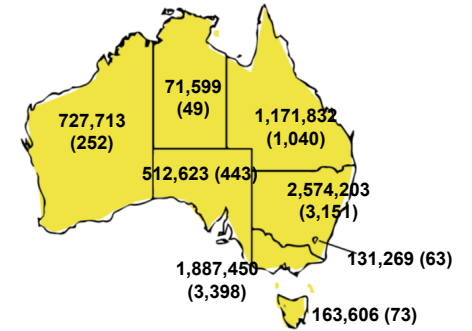
CASES BY AGE GROUP AND SEX



DEATHS BY AGE GROUP AND SEX

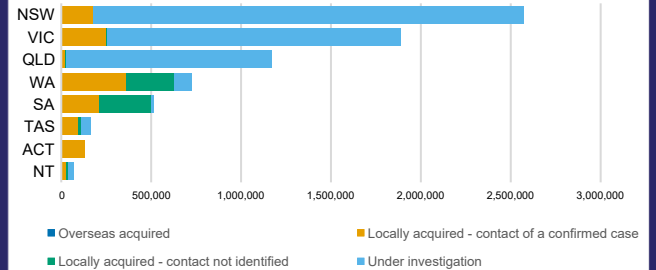


CASES (DEATHS) BY STATE AND TERRITORIES



CASES BY SOURCE OF INFECTION

Australia (% of all confirmed cases)



PUBLIC HEALTH RESPONSE MEASURE

Proportion of total cases under investigation

