



CURRENT STATUS OF CONFIRMED CASES



144



ACT	NSW	NT	QLD	SA	TAS	VIC	WA
3	69	2	9	15	3	35	8

3,157



ACT	NSW	NT	QLD	SA	TAS	VIC	WA
68	1,623	45	468	250	41	428	234

69,319,689

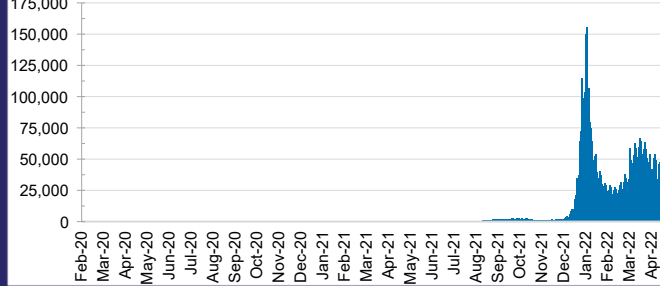


**TOTAL TESTS
REPORTED**

ACT	NSW	NT	QLD
1,057,382	31,030,951	766,424	7,324,883

SA	TAS	VIC	WA
4,601,713	644,520	20,500,080	3,393,736

DAILY NUMBER OF REPORTED CASES

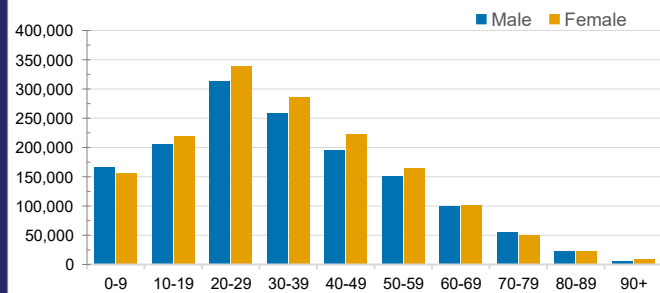


CASES IN AGED CARE SERVICES

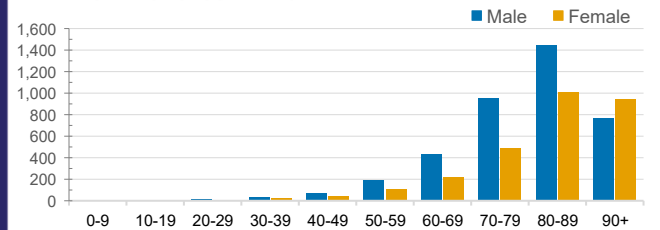
Confirmed Cases	Australia	ACT	NSW	NT	QLD	SA	TAS	VIC	WA
Residential Care Recipients	34365 (2181)	291 (18)	12701 (729)	104 (5)	5849 (269)	2645 (127)	617 (14)	10492 (966)	1666 (53)
In Home Care Recipients	205 (13)	0	45 (3)	0	15	1	5 (2)	138 (7)	1 (1)

Cases in care recipients (deaths)

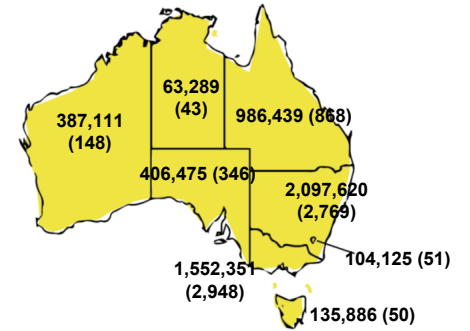
CASES BY AGE GROUP AND SEX



DEATHS BY AGE GROUP AND SEX

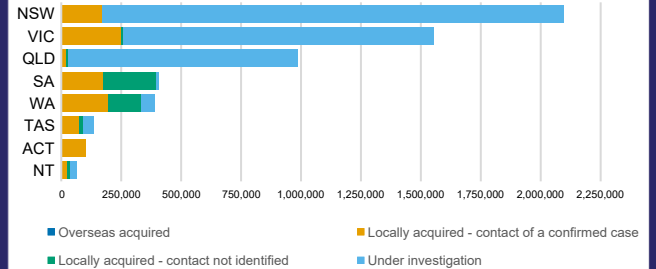


CASES (DEATHS) BY STATE AND TERRITORIES



CASES BY SOURCE OF INFECTION

Australia (% of all confirmed cases)



PUBLIC HEALTH RESPONSE MEASURE

Proportion of total cases under investigation

