



**CURRENT STATUS OF CONFIRMED CASES**



**143**



ACT	NSW	NT	QLD	SA	TAS	VIC	WA
4	71	1	15	17	2	25	8

**3,088**



ACT	NSW	NT	QLD	SA	TAS	VIC	WA
64	1,513	37	466	228	49	482	249

**69,543,932**

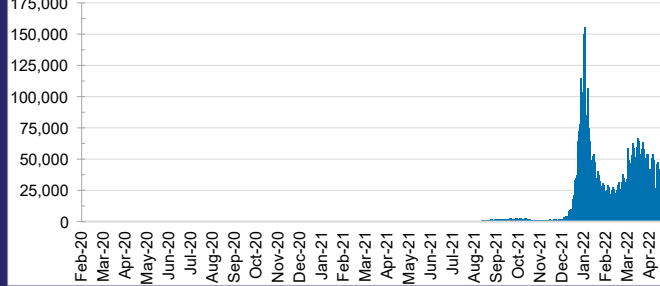


**TOTAL TESTS  
REPORTED**

ACT	NSW	NT	QLD
1,063,319	31,104,434	767,828	7,342,821

SA	TAS	VIC	WA
4,624,318	648,343	20,557,740	3,435,129

**DAILY NUMBER OF REPORTED CASES**

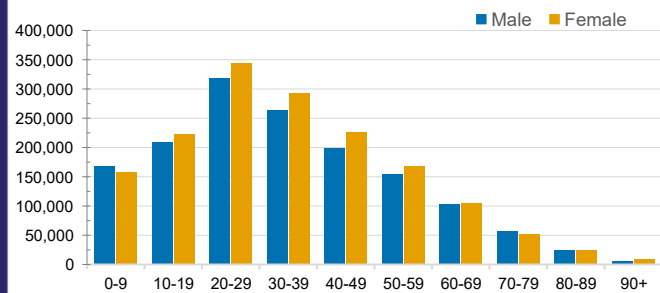


**CASES IN AGED CARE SERVICES**

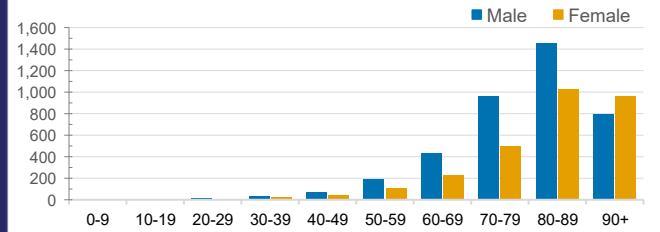
Confirmed Cases	Australia	ACT	NSW	NT	QLD	SA	TAS	VIC	WA
Residential Care Recipients	35721 (2220)	343 (19)	13074 (733)	104 (6)	5918 (271)	2884 (135)	657 (15)	10919 (980)	1822 (61)
In Home Care Recipients	205 (13)	0	45 (3)	0	15	1	5 (2)	138 (7)	1 (1)

Cases in care recipients (deaths)

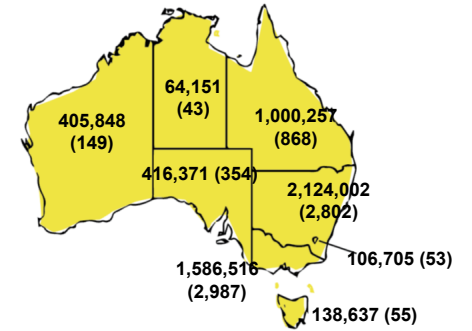
**CASES BY AGE GROUP AND SEX**



**DEATHS BY AGE GROUP AND SEX**

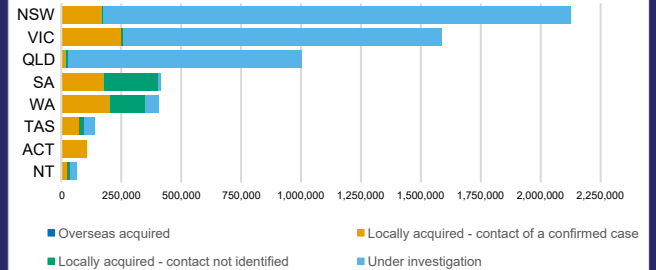


**CASES (DEATHS) BY STATE AND TERRITORIES**



**CASES BY SOURCE OF INFECTION**

Australia (% of all confirmed cases)



**PUBLIC HEALTH RESPONSE MEASURE**

Proportion of total cases under investigation

