



CURRENT STATUS OF CONFIRMED CASES



137



ACT	NSW	NT	QLD	SA	TAS	VIC	WA
3	68	2	11	11	3	35	4



3,169

ACT	NSW	NT	QLD	SA	TAS	VIC	WA
65	1,645	47	492	222	37	428	233

69,264,961

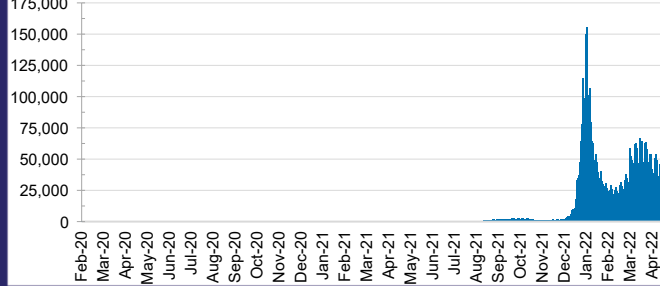


TOTAL TESTS REPORTED

ACT	NSW	NT	QLD
1,055,059	30,997,241	765,681	7,316,915

SA	TAS	VIC	WA
4,591,924	644,325	20,500,080	3,393,736

DAILY NUMBER OF REPORTED CASES

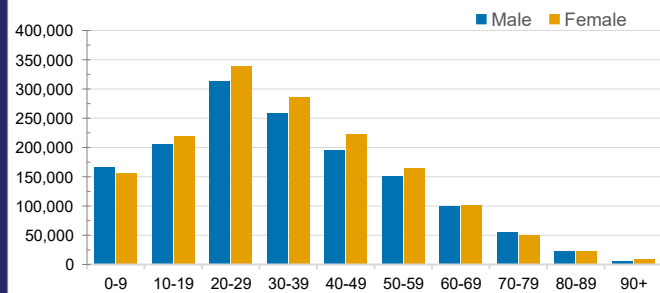


CASES IN AGED CARE SERVICES

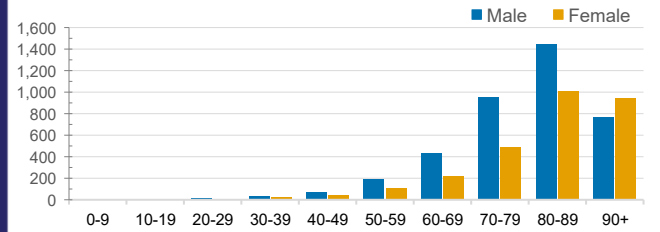
Confirmed Cases	Australia	ACT	NSW	NT	QLD	SA	TAS	VIC	WA
Residential Care Recipients	34365 (2181)	291 (18)	12701 (729)	104 (5)	5849 (269)	2645 (127)	617 (14)	10492 (966)	1666 (53)
In Home Care Recipients	205 (13)	0	45 (3)	0	15	1	5 (2)	138 (7)	1 (1)

Cases in care recipients (deaths)

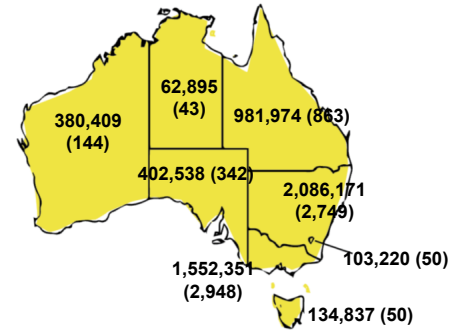
CASES BY AGE GROUP AND SEX



DEATHS BY AGE GROUP AND SEX

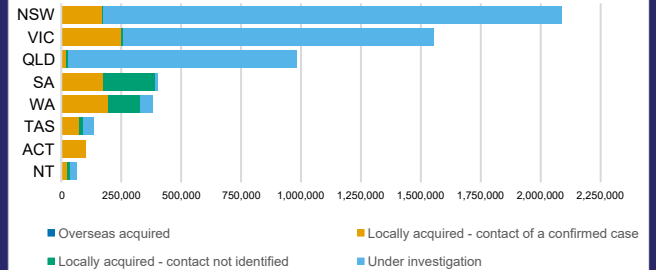


CASES (DEATHS) BY STATE AND TERRITORIES



CASES BY SOURCE OF INFECTION

Australia (% of all confirmed cases)



PUBLIC HEALTH RESPONSE MEASURE

Proportion of total cases under investigation

