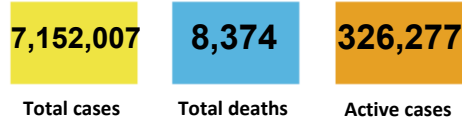
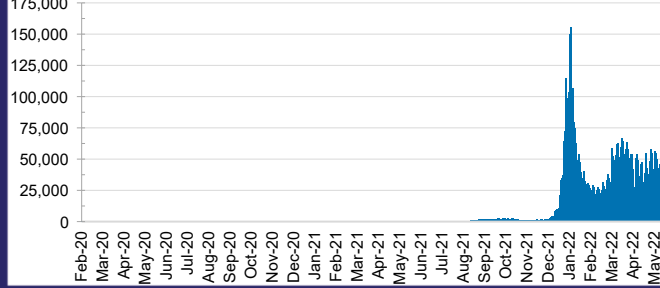




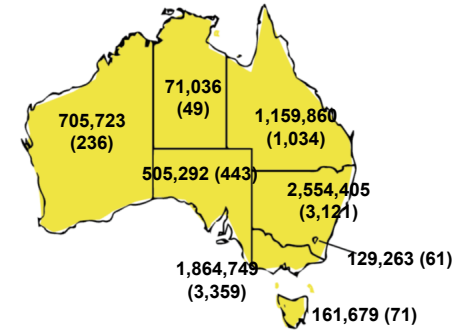
CURRENT STATUS OF CONFIRMED CASES



DAILY NUMBER OF REPORTED CASES



CASES (DEATHS) BY STATE AND TERRITORIES



99



ACT	NSW	NT	QLD	SA	TAS	VIC	WA
3	34	0	9	10	1	33	9



2,863

ACT	NSW	NT	QLD	SA	TAS	VIC	WA
83	1,173	16	422	226	50	571	322

71,659,625



ACT	NSW	NT	QLD
1,121,046	31,837,354	784,912	7,573,551

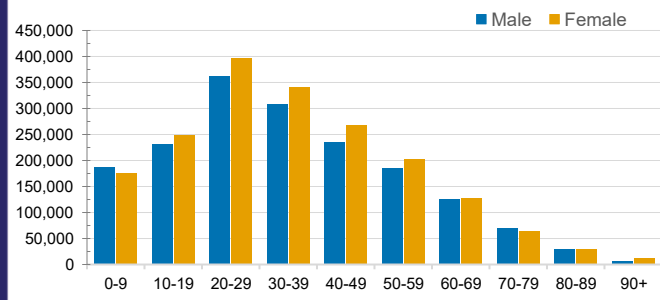
SA	TAS	VIC	WA
4,856,967	674,784	20,993,232	3,817,779

CASES IN AGED CARE SERVICES

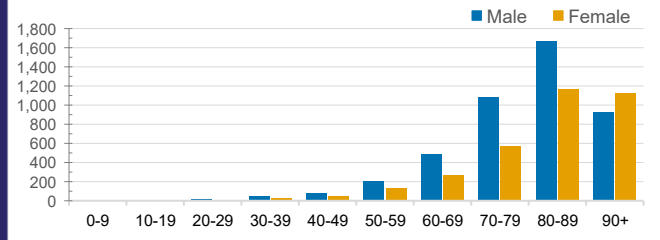
Confirmed Cases	Australia	ACT	NSW	NT	QLD	SA	TAS	VIC	WA
Residential Care Recipients	45869 (2487)	512 (25)	16013 (812)	116 (6)	7292 (308)	3824 (196)	1043 (20)	13994 (1022)	3075 (98)
In Home Care Recipients	205 (13)	0	45 (3)	0	15	1	5 (2)	138 (7)	1 (1)

Cases in care recipients (deaths)

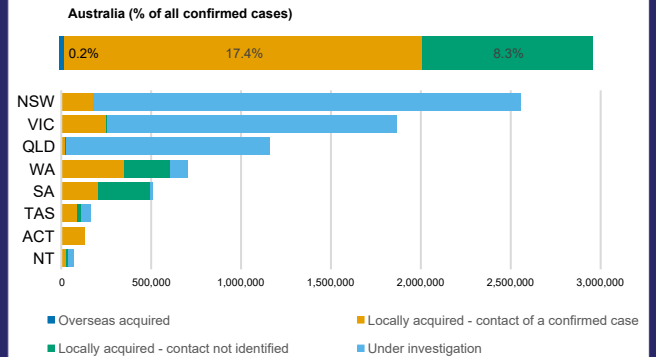
CASES BY AGE GROUP AND SEX



DEATHS BY AGE GROUP AND SEX



CASES BY SOURCE OF INFECTION



PUBLIC HEALTH RESPONSE MEASURE

