



**CURRENT STATUS OF CONFIRMED CASES**



**101**



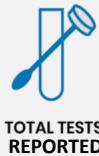
ACT	NSW	NT	QLD	SA	TAS	VIC	WA
1	38	0	12	9	1	34	6

**2,905**



ACT	NSW	NT	QLD	SA	TAS	VIC	WA
85	1,204	12	445	238	50	559	312

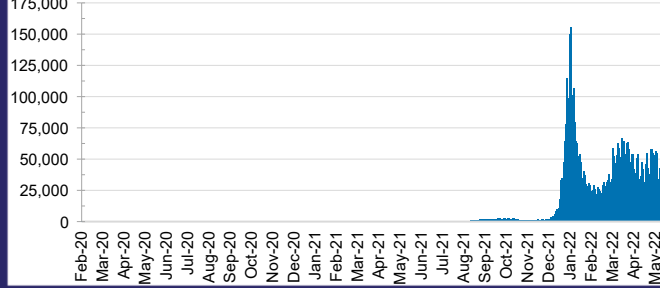
**71,563,709**



ACT	NSW	NT	QLD
1,119,131	31,809,774	783,973	7,550,101

SA	TAS	VIC	WA
4,847,499	673,795	20,974,955	3,804,481

**DAILY NUMBER OF REPORTED CASES**

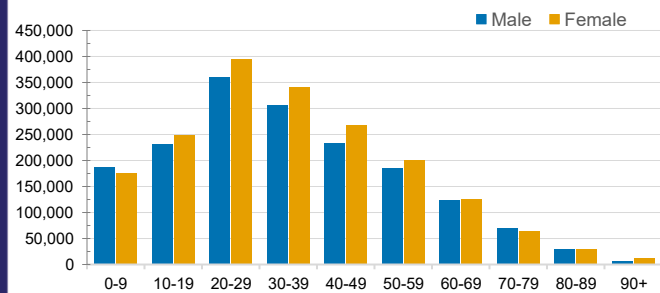


**CASES IN AGED CARE SERVICES**

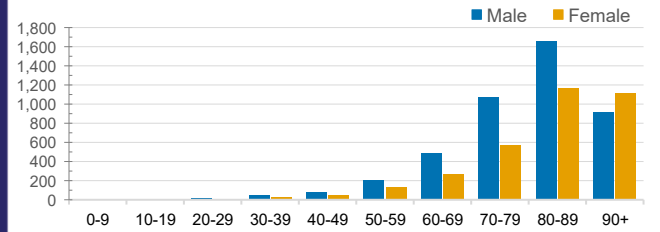
Confirmed Cases	Australia	ACT	NSW	NT	QLD	SA	TAS	VIC	WA
Residential Care Recipients	45397 (2479)	508 (25)	15848 (808)	116 (6)	7219 (306)	3793 (195)	1030 (20)	13890 (1022)	2993 (97)
In Home Care Recipients	205 (13)	0	45 (3)	0	15	1	5 (2)	138 (7)	1 (1)

Cases in care recipients (deaths)

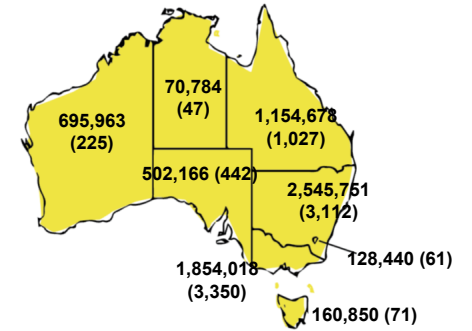
**CASES BY AGE GROUP AND SEX**



**DEATHS BY AGE GROUP AND SEX**

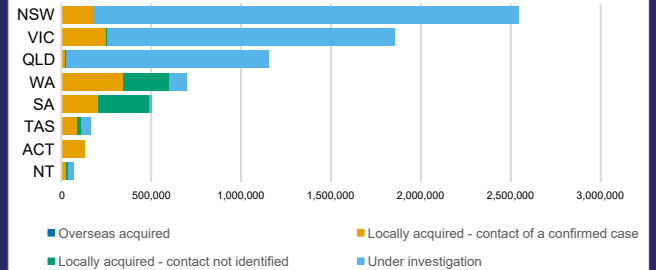


**CASES (DEATHS) BY STATE AND TERRITORIES**



**CASES BY SOURCE OF INFECTION**

Australia (% of all confirmed cases)



**PUBLIC HEALTH RESPONSE MEASURE**

Proportion of total cases under investigation

