



**CURRENT STATUS OF CONFIRMED CASES**



**108**



ACT	NSW	NT	QLD	SA	TAS	VIC	WA
1	35	1	15	10	2	37	7

**2,889**



ACT	NSW	NT	QLD	SA	TAS	VIC	WA
88	1,209	11	426	236	51	567	301

**71,455,210**

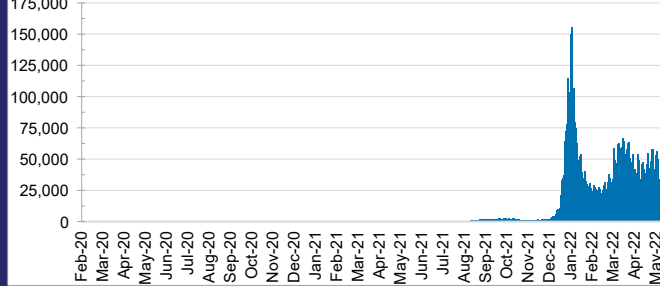


**TOTAL TESTS REPORTED**

ACT	NSW	NT	QLD
1,116,112	31,776,500	783,107	7,526,035

SA	TAS	VIC	WA
4,835,804	672,608	20,956,145	3,788,899

**DAILY NUMBER OF REPORTED CASES**

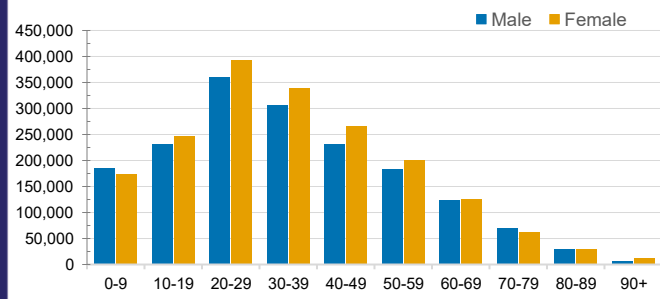


**CASES IN AGED CARE SERVICES**

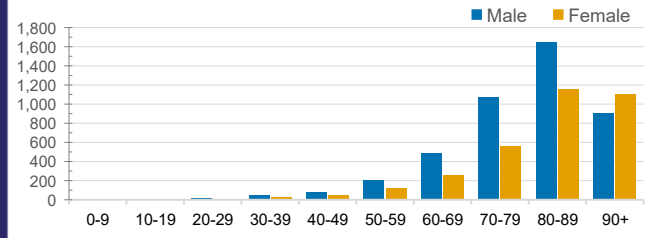
Confirmed Cases	Australia	ACT	NSW	NT	QLD	SA	TAS	VIC	WA
Residential Care Recipients	44888 (2463)	492 (26)	15688 (802)	116 (6)	7159 (303)	3710 (192)	1021 (20)	13761 (1020)	2941 (94)
In Home Care Recipients	205 (13)	0	45 (3)	0	15	1	5 (2)	138 (7)	1 (1)

Cases in care recipients (deaths)

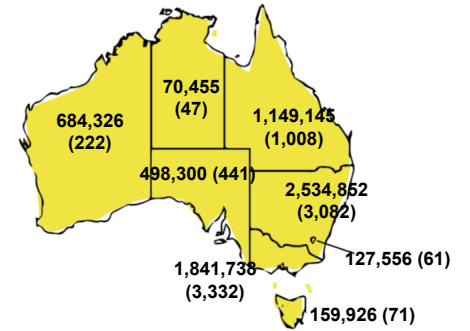
**CASES BY AGE GROUP AND SEX**



**DEATHS BY AGE GROUP AND SEX**

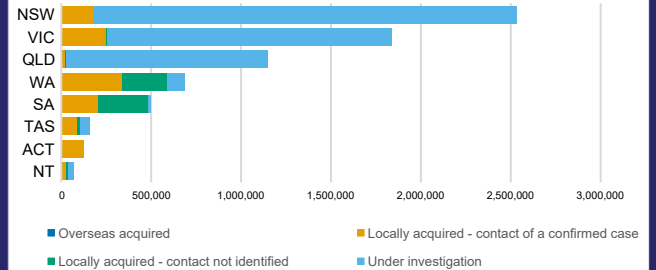


**CASES (DEATHS) BY STATE AND TERRITORIES**



**CASES BY SOURCE OF INFECTION**

Australia (% of all confirmed cases)



**PUBLIC HEALTH RESPONSE MEASURE**

Proportion of total cases under investigation

