



CURRENT STATUS OF CONFIRMED CASES



117



ACT	NSW	NT	QLD	SA	TAS	VIC	WA
3	38	1	17	9	1	36	12



ACT	NSW	NT	QLD	SA	TAS	VIC	WA
90	1,234	17	451	232	46	545	312

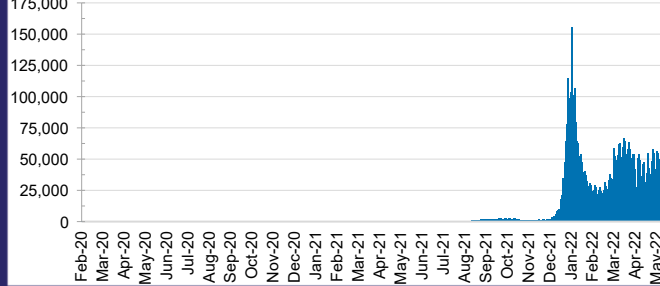
71,359,956



ACT	NSW	NT	QLD
1,114,063	31,743,981	782,339	7,516,712

SA	TAS	VIC	WA
4,823,698	671,182	20,935,504	3,772,477

DAILY NUMBER OF REPORTED CASES

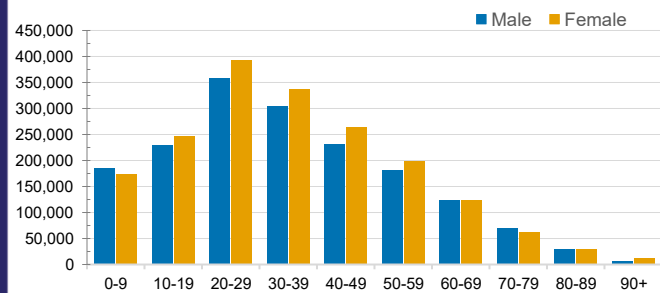


CASES IN AGED CARE SERVICES

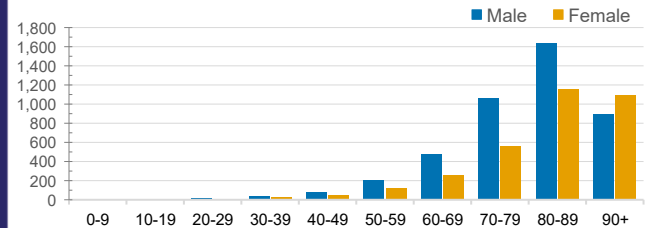
Confirmed Cases	Australia	ACT	NSW	NT	QLD	SA	TAS	VIC	WA
Residential Care Recipients	44338 (2446)	498 (26)	15564 (798)	116 (6)	7077 (299)	3672 (190)	1011 (20)	13563 (1017)	2837 (90)
In Home Care Recipients	205 (13)	0	45 (3)	0	15	1	5 (2)	138 (7)	1 (1)

Cases in care recipients (deaths)

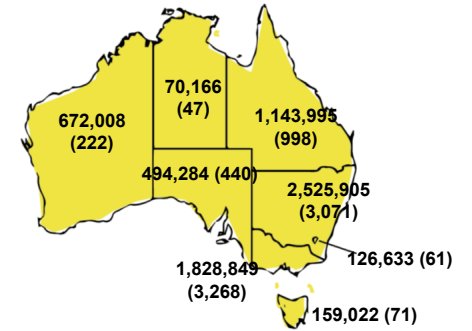
CASES BY AGE GROUP AND SEX



DEATHS BY AGE GROUP AND SEX

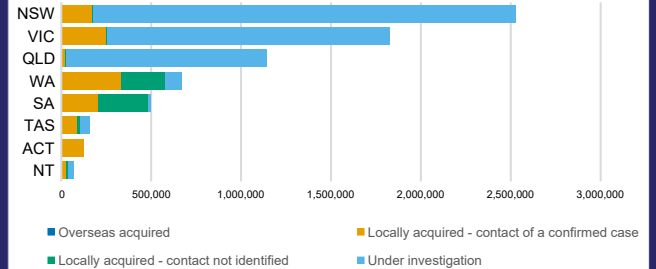


CASES (DEATHS) BY STATE AND TERRITORIES



CASES BY SOURCE OF INFECTION

Australia (% of all confirmed cases)



PUBLIC HEALTH RESPONSE MEASURE

Proportion of total cases under investigation

