



CURRENT STATUS OF CONFIRMED CASES



107



ACT	NSW	NT	QLD	SA	TAS	VIC	WA
4	35	2	17	10	1	29	9



2,912

ACT	NSW	NT	QLD	SA	TAS	VIC	WA
91	1,236	17	401	238	51	555	323

71,286,114

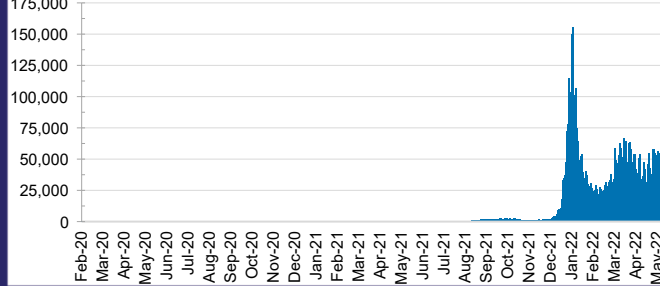


**TOTAL TESTS
REPORTED**

ACT	NSW	NT	QLD
1,111,367	31,720,053	781,641	7,510,510

SA	TAS	VIC	WA
4,814,907	670,220	20,922,368	3,755,048

DAILY NUMBER OF REPORTED CASES

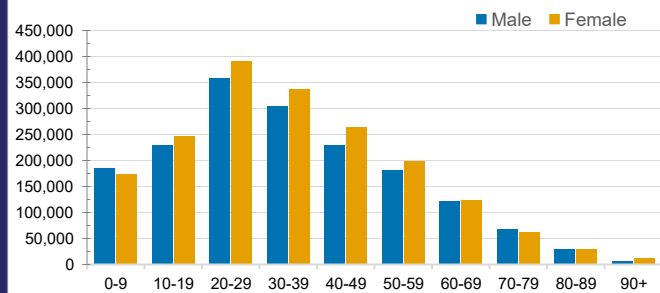


CASES IN AGED CARE SERVICES

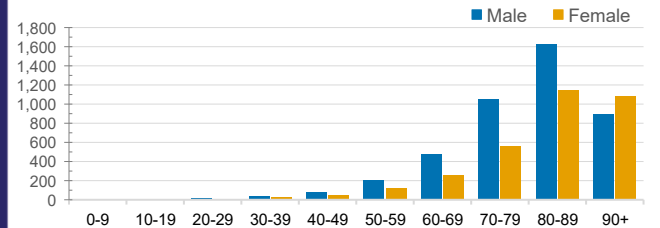
Confirmed Cases	Australia	ACT	NSW	NT	QLD	SA	TAS	VIC	WA
Residential Care Recipients	43663 (2434)	474 (24)	15301 (798)	116 (6)	6983 (294)	3639 (187)	996 (19)	13387 (1017)	2767 (89)
In Home Care Recipients	205 (13)	0	45 (3)	0	15	1	5 (2)	138 (7)	1 (1)

Cases in care recipients (deaths)

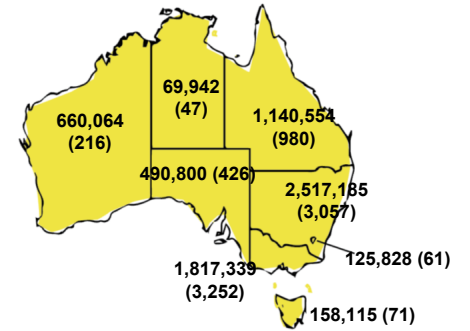
CASES BY AGE GROUP AND SEX



DEATHS BY AGE GROUP AND SEX

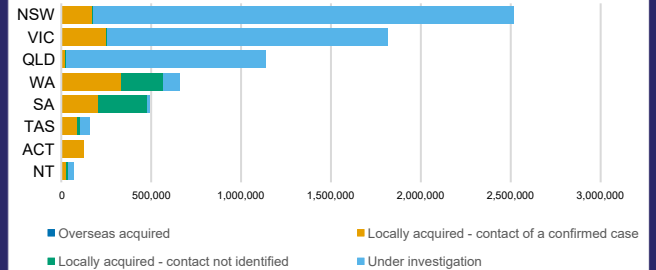


CASES (DEATHS) BY STATE AND TERRITORIES



CASES BY SOURCE OF INFECTION

Australia (% of all confirmed cases)



PUBLIC HEALTH RESPONSE MEASURE

Proportion of total cases under investigation

